

O.D.O.T. DISTRICT 2 SURVEY OFFICE (USE ONLY)

PERSONNEL

REFERENCE NO. 18 A

SHEET 20 OF 52

NOTES RHOADES

DATE 8/10/22

ROUTE US 20A

H.C. AUBLE

WEATHER WARM

COUNTY LUCAS

R.C. NIESE

TEMP. 70°

TOWNSHIP SWANTON

WHITAKER

SECTION 11

DWG BY RHOADES

PID PAVETRAIN

T 7 N R 9 E

TYPE MONUMENT MAG/WASHER

ON SURFACE - ~~BELOW~~ ON

OFFSET CL PAVEMENT 2' LT : RT

13' TO RT EDGE PAVEMENT

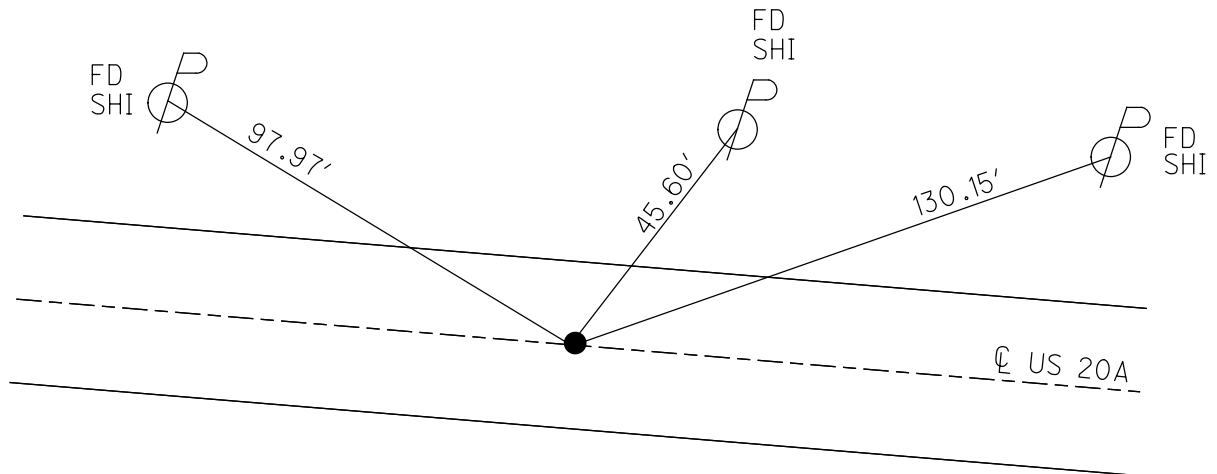
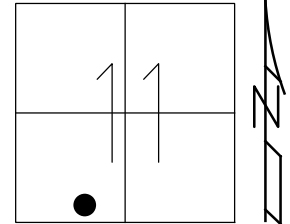
STATION: 257+45.38

HORIZ.DATUM: NAD83 2011

GEOID: NAVD88 2018

GRID: NORTHING: 698109.621

EASTING: 1612983.612



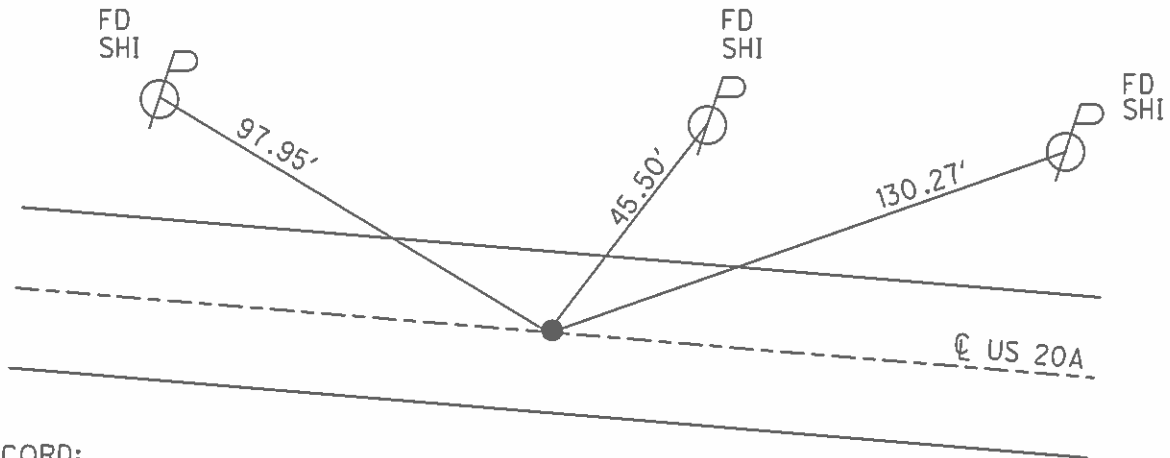
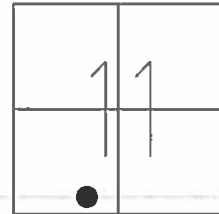
RECORD:  
 FD 1 1/2" IPIN IN CMON  
 7/16/71, IS  
 FD 1 1/2" SQ BOLT IN  
 MON BOX SET BY  
 LUCAS CO ENGR  
 6/28/85, IS  
 FD SQ BOLT  
 2" DOWN  
 REF17  
 8/2/13, DCH  
 SET MAG NAIL  
 NEWREF17  
 4/11/14, DCH  
 FD MAG/WASHER  
 REFA18  
 8/10/22, DSA  
 11/21/22, TDN

O.D.O.T. DISTRICT 2 SURVEY OFFICE (USE ONLY)

PERSONNEL \_\_\_\_\_ REFERENCE NO. 18 A SHEET 20 OF 48  
NOTES WESTFALL DATE 8/2/13 ROUTE US 20A  
H.C. ROUSOS WEATHER SUNNY COUNTY LUCAS  
R.C. WESTFALL TEMP. 70° TOWNSHIP SWANTON  
KEFFER SECTION 11  
T 7 N R 9 E

TYPE MONUMENT SO BOLT  
~~ON SURFACE~~ - BELOW 2"  
LEFT - ☉ PAV'T - RIGHT ON  
13.0' TO RT EDGE PAVEMENT  
S.L.M. 257+45.38

GRID: NORTHING: 698109.667 EASTING: 1612983.424

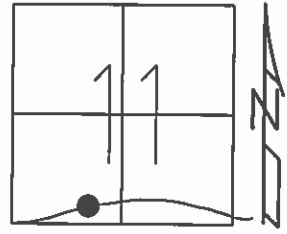


RECORD:  
FD 1 1/2" IPIN IN CMON  
7/16/71, IS  
FD 1 1/2" SO BOLT IN  
MON BOX SET BY  
LUCAS CO ENGR  
6/28/85, IS  
FD SO BOLT  
2" DOWN  
GPS, REF17  
8/2/13, DCH  
SET MAG NAIL  
GPS, NEWREF17  
4/11/14, DCH

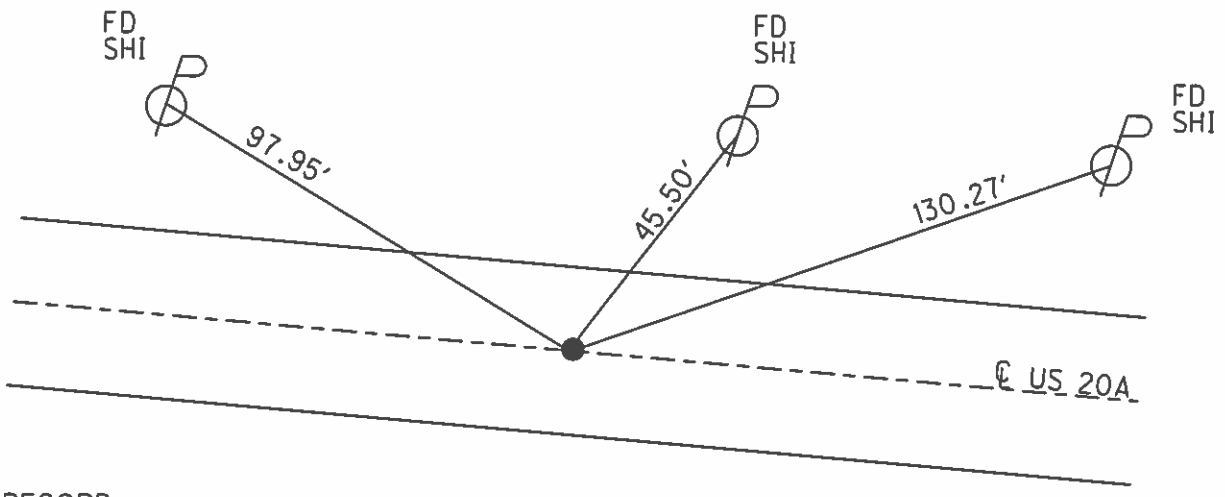
O.D.O.T. DISTRICT 2 SURVEY OFFICE (USE ONLY)

PERSONNEL \_\_\_\_\_ REFERENCE NO. 18 A SHEET 14 OF 42  
NOTES WESTFALL DATE 8/2/13 ROUTE US 20A  
H.C. ROUSOS WEATHER SUNNY COUNTY LUCAS  
R.C. WESTFALL TEMP. 70° TOWNSHIP SWANTON  
SECTION 11  
T 7 N R 9 E

TYPE MONUMENT SQ. BOLT  
~~ON SURFACE~~ - BELOW 2"  
LEFT - ☉ PAV'T - RIGHT ON  
13.0' TO S EDGE PAVEMENT  
S.L.M. 257+45.38



Grid: Northing: 698109.667 Easting: 1612983.424



RECORD:  
FD 1 1/2" IPIN IN CMON  
7/16/71, I.S.

FD 1 1/2" SQ.BOLT IN  
MONBOX SET BY  
LUCAS CO. ENGR.  
6/28/85, I.S.

FD SQ.BOLT  
2" DOWN  
GPS, REF17  
8/2/13, DCH

SET MAG NAIL  
GPS, NEWREF17  
4/11/14, DCH