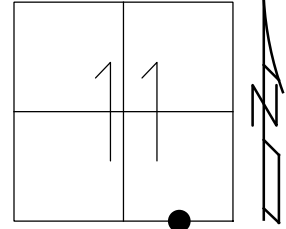


O.D.O.T. DISTRICT 2 SURVEY OFFICE (USE ONLY)

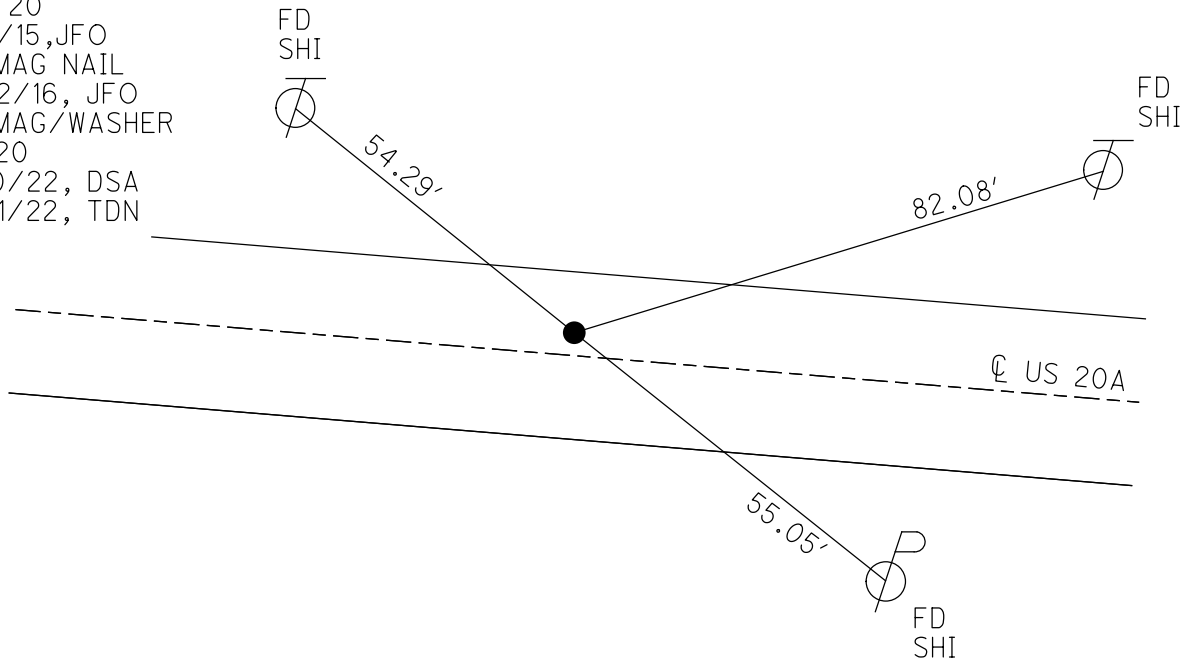
PERSONNEL _____ REFERENCE NO. 20 SHEET 22 OF 52
 NOTES RHOADES DATE 8/10/22 ROUTE US 20A
 H.C. AUBLE WEATHER SUNNY COUNTY LUCAS
 R.C. NIESE TEMP. 72° TOWNSHIP MONCLOVA
 WHITAKER SECTION 11
 DWG BY RHOADES PID PAVETRAIN T 7 N R 9 E

TYPE MONUMENT MAG/WASHER
 ON SURFACE - ~~BELOW~~ ON
 OFFSET ☉ PAVEMENT 4' LT : ~~RT~~
7.2' TO LT EDGE PAVEMENT
 STATION: 279+94.20



HORZ.DATUM: NAD83 2011 GEOID: NAVD88 2018
 GRID: NORTHING: 697896.766 EASTING: 1615222.060

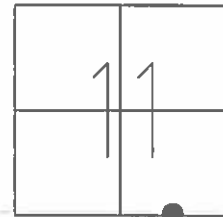
RECORD:
 FD R.R.SPIKE
 3" DOWN
 6/28/85, IS
 FD R.R.SPIKE
 2" DOWN
 REF19
 8/5/13, DCH
 SET MAG NAIL
 NEWREF19
 4/11/14, DCH
 FD MAG NAIL
 REF 20
 8/3/15, JFO
 FD MAG NAIL
 6/22/16, JFO
 FD MAG/WASHER
 REF20
 8/10/22, DSA
 11/21/22, TDN



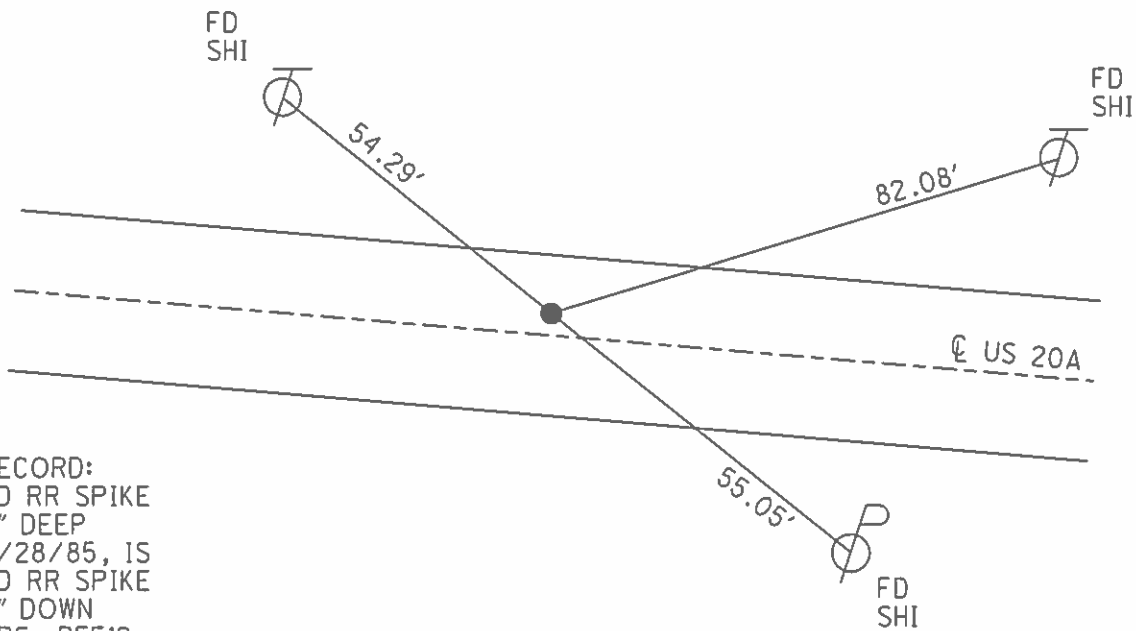
O.D.O.T. DISTRICT 2 SURVEY OFFICE (USE ONLY)

PERSONNEL _____ REFERENCE NO. 20 SHEET 22 OF 48
NOTES WESTFALL DATE 8/5/13 ROUTE US 20A
H.C. ROUSOS WEATHER SUNNY COUNTY LUCAS
R.C. WESTFALL TEMP. 67° TOWNSHIP MONCLOVA
KEFFER SECTION 11
T 7 N R 9 E

TYPE MONUMENT RR SPIKE
~~ON SURFACE~~ - BELOW 2"
LEFT - ☉ PAV'T - ~~RIGHT~~ 3'
- TO - EDGE PAVEMENT
S.L.M. 279+94.20



GRID: NORTHING: 697896.793 EASTING: 1615221.92

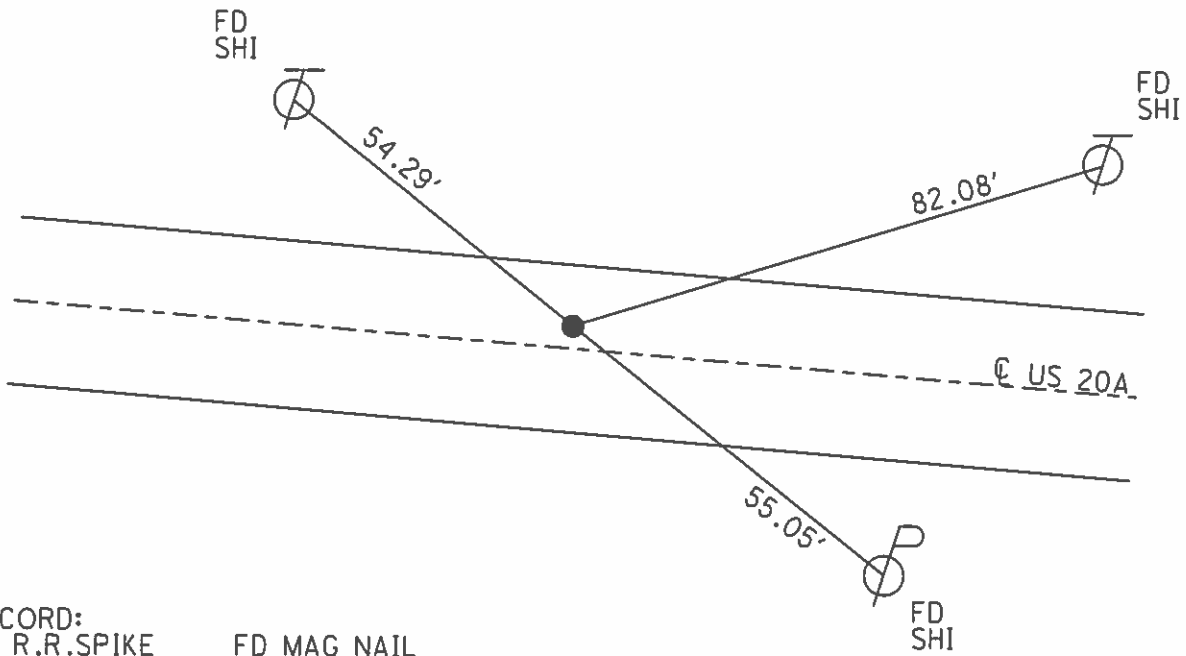
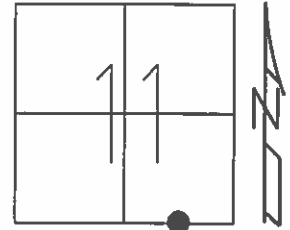


RECORD:
FD RR SPIKE
3" DEEP
6/28/85, IS
FD RR SPIKE
2" DOWN
GPS, REF19
8/5/13, DCH
SET MAG NAIL
GPS, NEWREF19
4/11/14, DCH
FD MAG NAIL
GPS, REF 20
8/3/15, JFO
FD MAG NAIL
6/22/16

O.D.O.T. DISTRICT 2 SURVEY OFFICE (USE ONLY)

PERSONNEL _____ REFERENCE NO. 20 SHEET 16 OF 42
 NOTES WESTFALL DATE 8/5/13 ROUTE US 20A
 H.C. ROUSOS WEATHER SUNNY COUNTY LUCAS
 R.C. WESTFALL TEMP. 67° TOWNSHIP MONCLOVA
 _____ SECTION 11
 _____ T 7 N R 9 E

TYPE MONUMENT R.R.SPIKE
~~ON SURFACE~~ - BELOW 2"
 LEFT - ☉ PAV'T - ~~RIGHT~~ 3'
 _____ TO _____ EDGE PAVEMENT
 S.L.M. 279+94.20
 Grid: Northing: 697896.793 Easting: 1615221.92



RECORD:
 FD R.R.SPIKE FD MAG NAIL
 3" DEEP GPS, REF 20
 6/28/85, I.S. 8/3/15, JFO

FD R.R.SPIKE FD MAG NAIL
 2" DOWN 6/22/16
 GPS, REF19
 8/5/13, DCH

SET MAG NAIL
 GPS, NEWREF19
 4/11/14, DCH