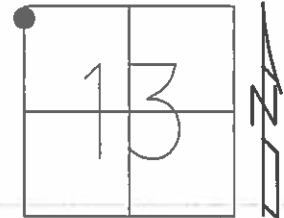


O.D.O.T. DISTRICT 2 SURVEY OFFICE (USE ONLY)

PERSONNEL _____ REFERENCE NO. 21 SHEET 23 OF 48

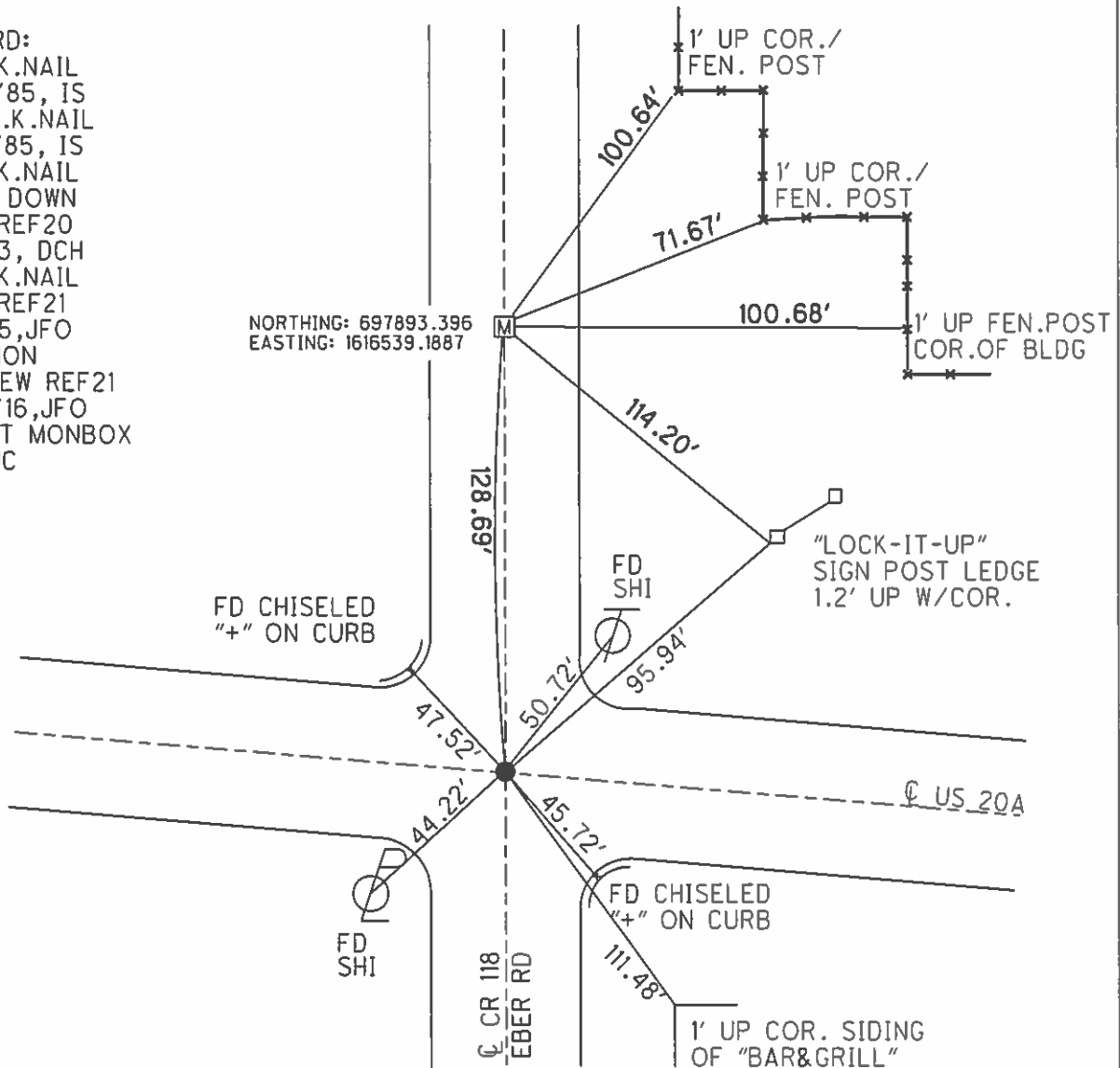
NOTES RHOADES DATE 8/3/15 ROUTE US 20A
 H.C. O'DONNELL WEATHER SUNNY COUNTY LUCAS
 R.C. RHOADES TEMP. 67° TOWNSHIP MONCLOVA
 _____ KEFFER _____ SECTION 13
 _____ T 7 N R 9 E

TYPE MONUMENT P.K. NAIL
~~ON SURFACE~~ - BELOW 1 1/2"
 LEFT - ☉ PAV'T - RIGHT - _____
 _____ TO _____ EDGE PAVEMENT
 S.L.M. 293+20.11



GRID: NORTHING: 697744.679 EASTING: 1616539.202

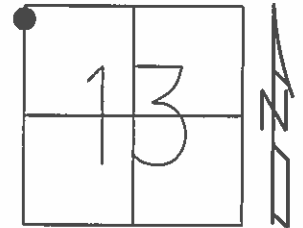
RECORD:
 FD P.K.NAIL
 4/30/85, IS
 SET P.K.NAIL
 6/28/85, IS
 FD P.K.NAIL
 1 1/2" DOWN
 GPS, REF20
 8/5/13, DCH
 FD P.K.NAIL
 GPS, REF21
 8/3/15, JFO
 FD CMON
 GPS, NEW REF21
 6/22/16, JFO
 FD SET MONBOX
 REFLUC



O.D.O.T. DISTRICT 2 SURVEY OFFICE (USE ONLY)

PERSONNEL _____ REFERENCE NO. 21 SHEET 17 OF 42
 NOTES RHOADES DATE 8/3/15 ROUTE US 20A
 H.C. O'DONNELL WEATHER SUNNY COUNTY LUCAS
 R.C. RHOADES TEMP. 67° TOWNSHIP MONCLOVA
 _____ SECTION 13
 _____ T 7 N R 9 E

TYPE MONUMENT P.K. NAIL
~~ON SURFACE~~ - BELOW 1 1/2"
 LEFT - ☉ PAV'T - RIGHT - _____
 _____ TO _____ EDGE PAVEMENT
 S.L.M. 293+20.11
 Grid: Northing: 697744.679 Easting: 1616539.202



RECORD:
 FD P.K.NAIL
 4/30/85, I.S.
 SET P.K.NAIL
 6/28/85, I.S.
 FD P.K.NAIL
 1 1/2" DOWN
 GPS, REF20
 8/5/13, DCH
 FD P.K.NAIL
 GPS, REF21
 8/3/15, JFO
 FD CMON
 GPS, NEW REF21
 6/22/16, JFO

FD SET
 MON BOX
 GPS, REFLUC
 NORTHING:
 697893.396
 EASTING:
 1616539.1887

