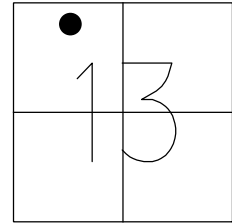


O.D.O.T. DISTRICT 2 SURVEY OFFICE (USE ONLY)

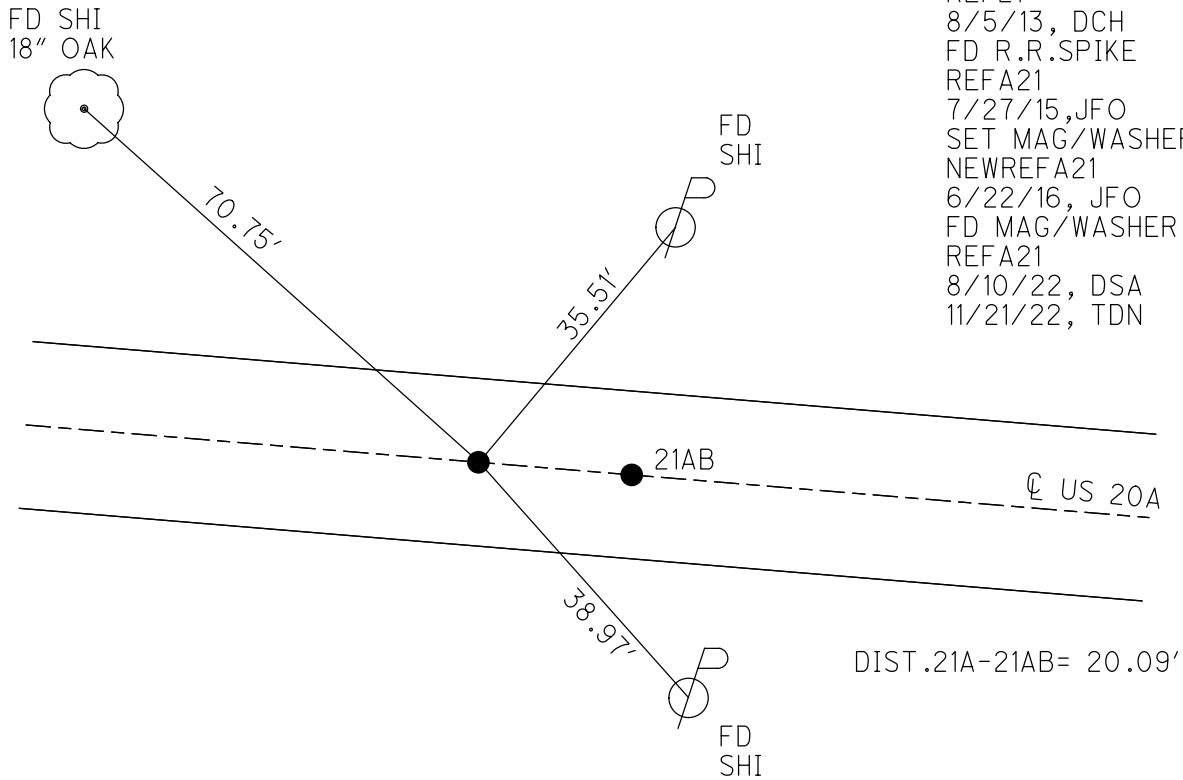
PERSONNEL \_\_\_\_\_ REFERENCE NO. 21 A SHEET 24 OF 52  
 NOTES RHOADES DATE 8/10/22 ROUTE US 20A  
 H.C. AUBLE WEATHER SUNNY COUNTY LUCAS  
 R.C. NIESE TEMP. 72° TOWNSHIP MONCLOVA  
           WHITAKER SECTION 13  
 DWG BY RHOADES PID PAVETRAIN T 7 N R 9 E

TYPE MONUMENT MAG/WASHER  
 ON SURFACE - ~~BELOW~~ ON  
 OFFSET  $\text{C}$  PAVEMENT ON LT : RT  
- TO - EDGE PAVEMENT  
 STATION: 306+47.19



HORZ.DATUM: NAD83 2011 GEOID: NAVD88 2018  
 GRID: NORTHING: 697558.534 EASTING: 1617853.073

RECORD:  
 FD R.R.SPIKE  
 3" DOWN  
 7/1/85, IS  
 FD R.R.SPIKE  
 2" DOWN  
 REF21  
 8/5/13, DCH  
 FD R.R.SPIKE  
 REFA21  
 7/27/15, JFO  
 SET MAG/WASHER  
 NEWREFA21  
 6/22/16, JFO  
 FD MAG/WASHER  
 REFA21  
 8/10/22, DSA  
 11/21/22, TDN



O.D.O.T. DISTRICT 2 SURVEY OFFICE (USE ONLY)

PERSONNEL \_\_\_\_\_ REFERENCE NO. 21 A SHEET 24 OF 28

NOTES WESTFALL DATE 8/5/13 ROUTE US 20A

H.C. ROUSOS WEATHER SUNNY COUNTY LUCAS

R.C. WESTFALL TEMP. 67° TOWNSHIP MONCLOVA

KEFFER SECTION 13

T 7 N R 9 E

TYPE MONUMENT R.R.SPIKE

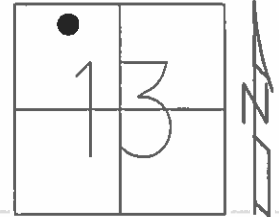
~~ON SURFACE~~ - BELOW 2"

LEFT - ☉ PAV'T - RIGHT - \_\_\_\_\_

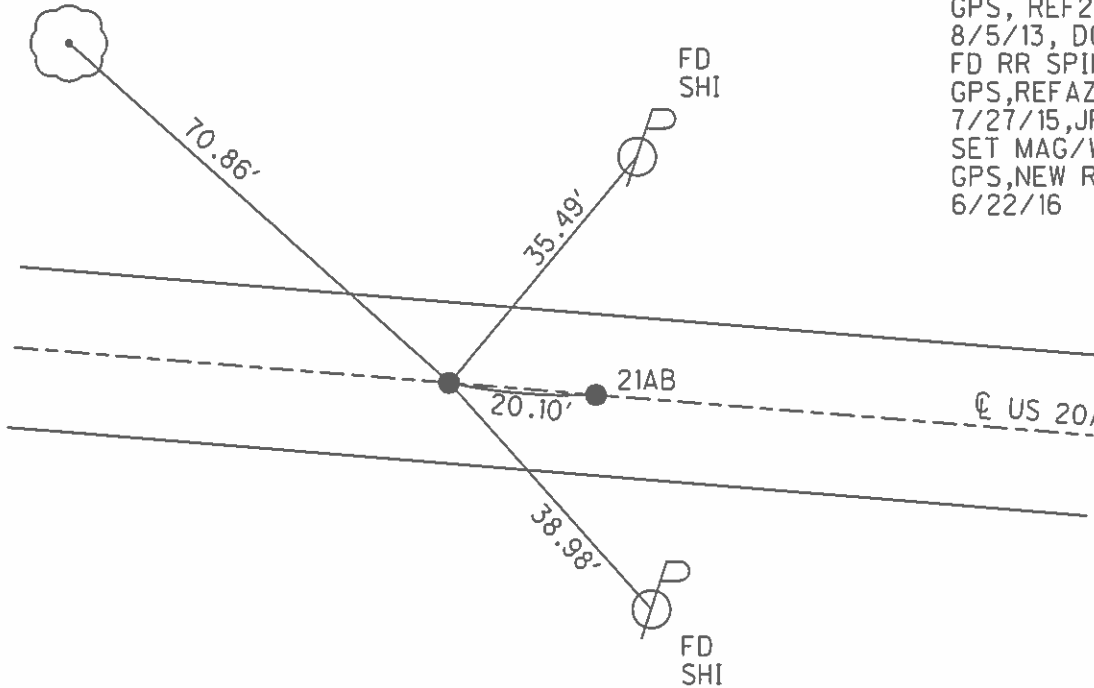
-      TO      EDGE PAVEMENT

S.L.M. 306+47.19

GRID: NORTHING: 697558.423 EASTING: 1617853.103



FD SHI  
18"

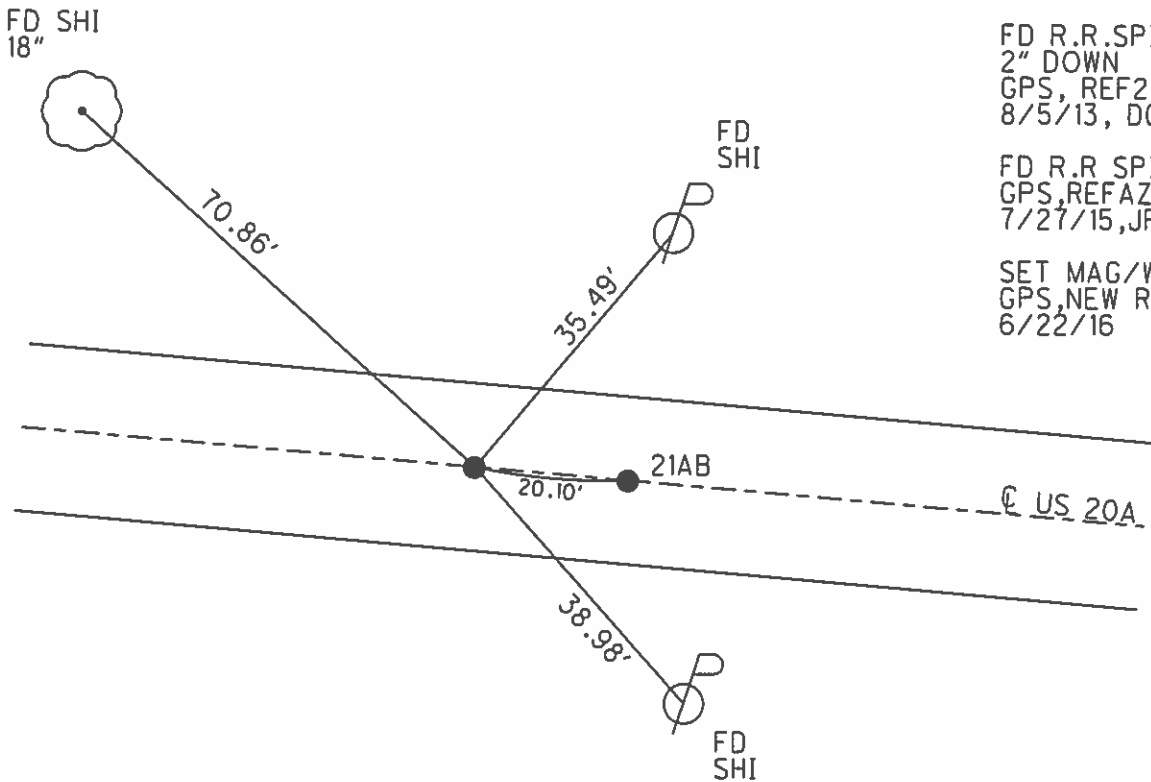
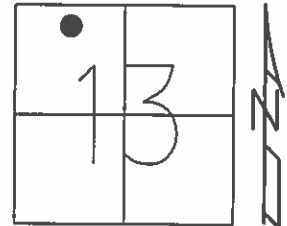


RECORD:  
FD RR SPIKE  
3" BELOW  
7/1/85, IS  
FD RR SPIKE  
2" DOWN  
GPS, REF21  
8/5/13, DCH  
FD RR SPIKE  
GPS, REFAZI  
7/27/15, JFO  
SET MAG/W  
GPS, NEW REFA21  
6/22/16

O.D.O.T. DISTRICT 2 SURVEY OFFICE (USE ONLY)

PERSONNEL \_\_\_\_\_ REFERENCE NO. 21 A SHEET 18 OF 42  
 NOTES WESTFALL DATE 8/5/13 ROUTE US 20A  
 H.C. ROUSOS WEATHER SUNNY COUNTY LUCAS  
 R.C. WESTFALL TEMP. 67° TOWNSHIP MONCLOVA  
 \_\_\_\_\_ SECTION 13  
 \_\_\_\_\_ T 7 N R 9 E

TYPE MONUMENT R.R.SPIKE  
~~ON SURFACE~~ - BELOW 2"  
 LEFT - ☉ PAV'T - RIGHT - \_\_\_\_\_  
 \_\_\_\_\_ TO \_\_\_\_\_ EDGE PAVEMENT  
 S.L.M. 306+47.19  
 Grid: Northing: 697558.423 Easting: 1617853.103



RECORD:  
 FD R.R.SPIKE  
 3" BELOW  
 7/1/85, I.S.  
  
 FD R.R.SPIKE  
 2" DOWN  
 GPS, REF21  
 8/5/13, DCH  
  
 FD R.R.SPIKE  
 GPS, REFAZI  
 7/27/15, JFO  
  
 SET MAG/W  
 GPS, NEW REFA21  
 6/22/16