

O.D.O.T. DISTRICT 2 SURVEY OFFICE (USE ONLY)

PERSONNEL

REFERENCE NO. 23

SHEET 29 OF 52

NOTES O'DONNELL

DATE 4/13/21

ROUTE US 20A

H.C. O'DONNELL

WEATHER FAIR

COUNTY LUCAS

R.C. RHOADES

TEMP. 52°

TOWNSHIP MONCLOVA

SECTION 13

DWG BY \_\_\_\_\_ PID 106393

T 7 N R 10 E

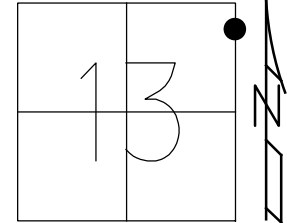
TYPE MONUMENT CMON W/1" IPIN

~~ON SURFACE~~ - BELOW ON

OFFSET  $\varnothing$  PAVEMENT \_\_\_\_\_ - \_\_\_\_\_ LT : RT

\_\_\_\_\_ TO \_\_\_\_\_ EDGE PAVEMENT

STATION: 346+84.96



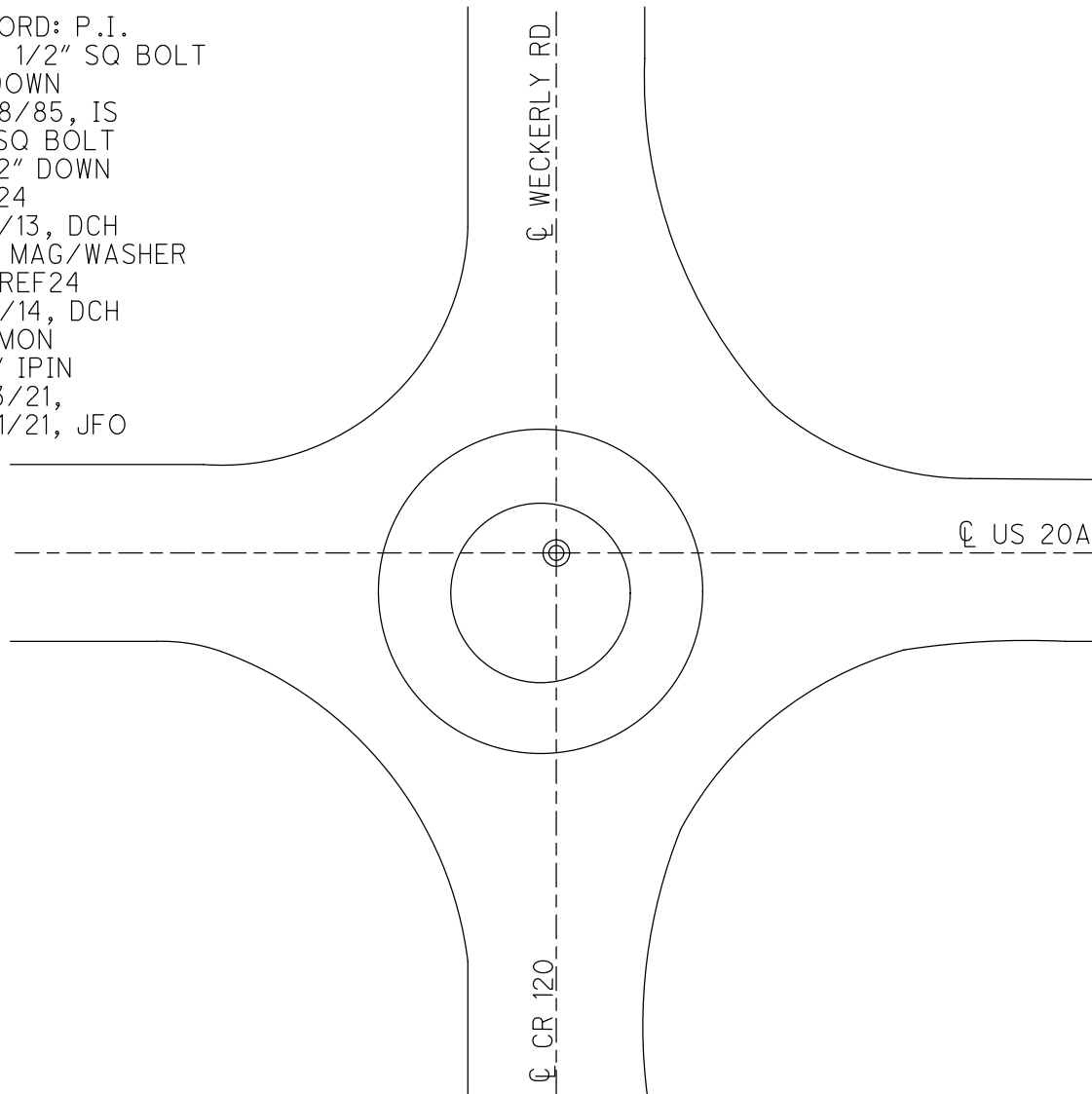
HORIZ.DATUM: NAD83 2011

GEOID: NAVD88 2012A

GRID: NORTHING: 697422.829

EASTING: 1619593.684

RECORD: P.I.  
FD 1 1/2" SQ BOLT  
3" DOWN  
6/28/85, IS  
FD SQ BOLT  
1 1/2" DOWN  
REF24  
8/5/13, DCH  
SET MAG/WASHER  
NEWREF24  
4/11/14, DCH  
FDCMON  
W/1" IPIN  
4/13/21,  
5/21/21, JFO



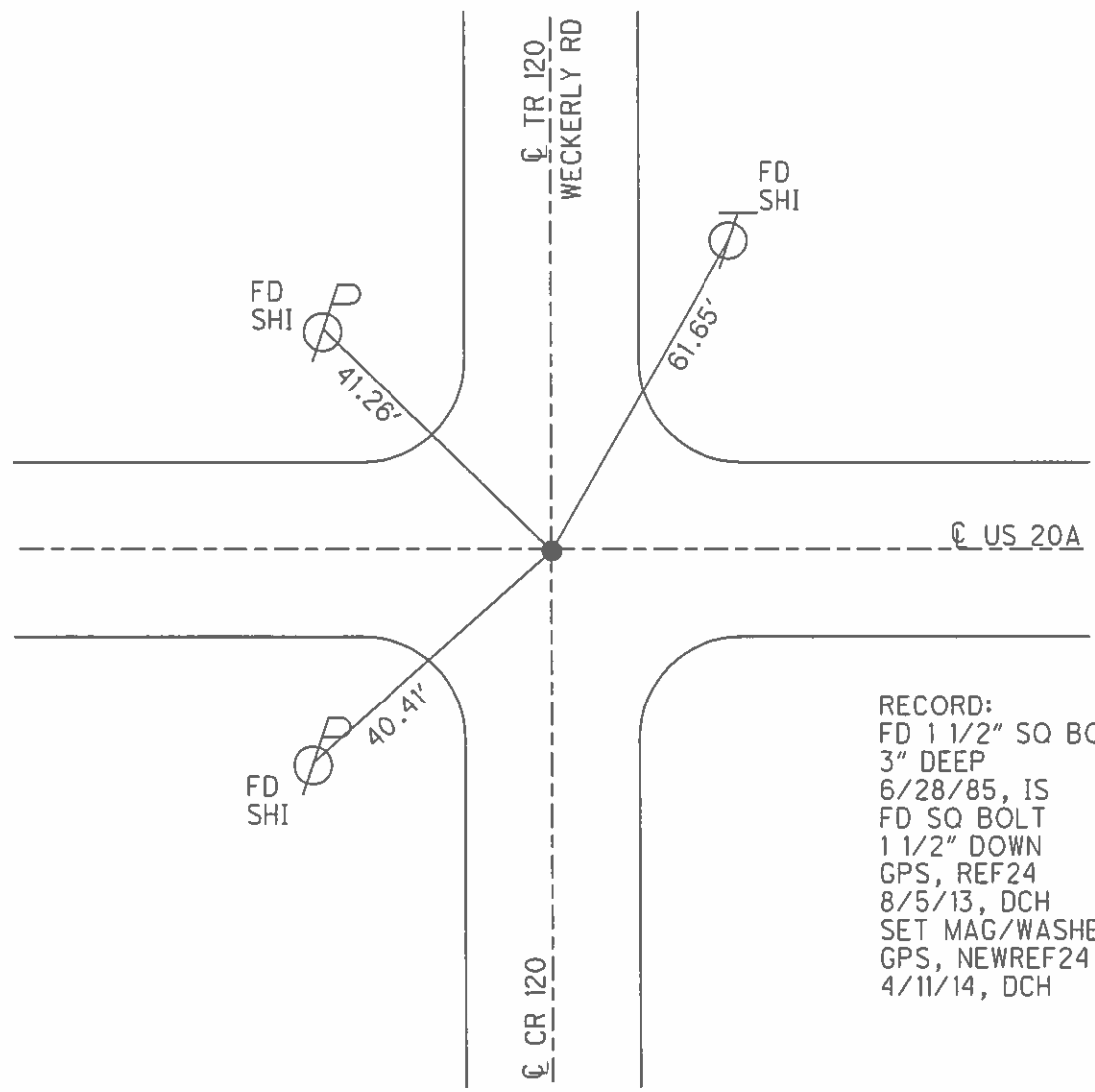
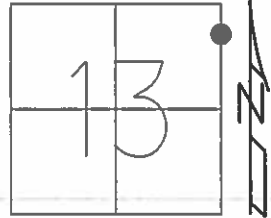
$\varnothing$  CR 120

O.D.O.T. DISTRICT 2 SURVEY OFFICE (USE ONLY)

PERSONNEL \_\_\_\_\_ REFERENCE NO. 23 SHEET 28 OF 48  
 NOTES WESTFALL DATE 8/5/13 ROUTE US 20A  
 H.C. ROUSOS WEATHER SUNNY COUNTY LUCAS  
 R.C. WESTFALL TEMP. 67° TOWNSHIP MONCLOVA  
 \_\_\_\_\_ SECTION 13  
 \_\_\_\_\_ T 7 N R 10 E

TYPE MONUMENT SQ BOLT  
~~ON SURFACE~~ - BELOW 1 1/2"  
 LEFT - ☉ PAV'T - RIGHT - \_\_\_\_\_  
 - \_\_\_\_\_ TO - \_\_\_\_\_ EDGE PAVEMENT  
 S.L.M. 346+84.68

GRID: NORTHING: 697328.002 EASTING: 1621880.92



RECORD:  
 FD 1 1/2" SQ BOLT  
 3" DEEP  
 6/28/85, IS  
 FD SQ BOLT  
 1 1/2" DOWN  
 GPS, REF24  
 8/5/13, DCH  
 SET MAG/WASHER  
 GPS, NEWREF24  
 4/11/14, DCH

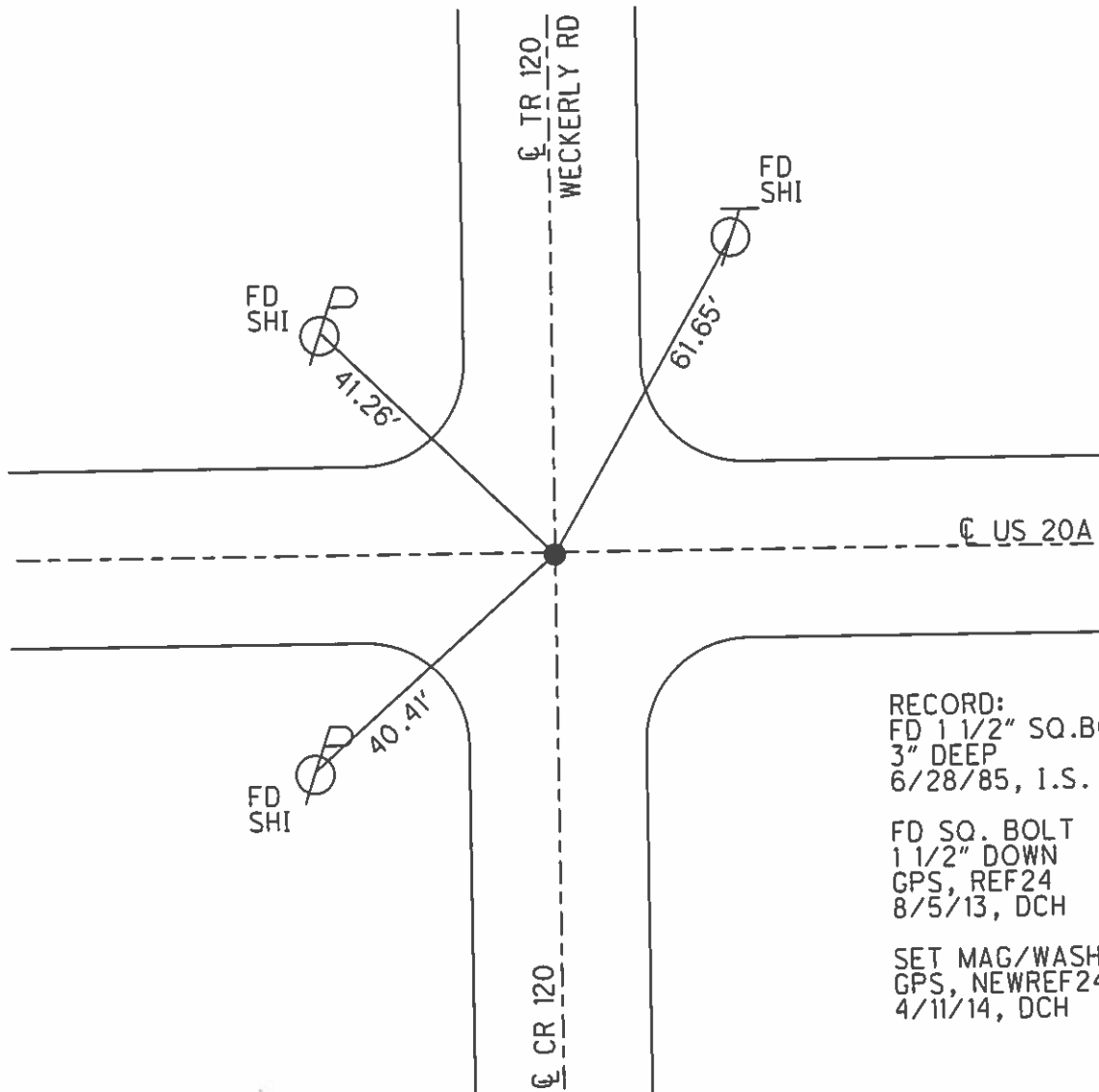
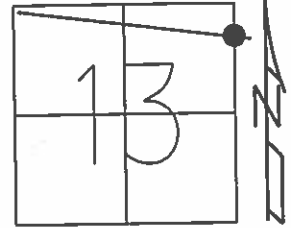
O.D.O.T. DISTRICT 2 SURVEY OFFICE (USE ONLY)

PERSONNEL \_\_\_\_\_ REFERENCE NO. 23 SHEET 22 OF 42

NOTES WESTFALL DATE 8/5/13 ROUTE US 20A  
 H.C. ROUSOS WEATHER SUNNY COUNTY LUCAS  
 R.C. WESTFALL TEMP. 67° TOWNSHIP MONCLOVA  
 \_\_\_\_\_ SECTION 13  
 \_\_\_\_\_ T 7 N R 10 E

TYPE MONUMENT SQ. BOLT  
~~ON SURFACE~~ - BELOW 1 1/2"  
 LEFT - ☉ PAV'T - RIGHT - \_\_\_\_\_  
 - \_\_\_\_\_ TO - \_\_\_\_\_ EDGE PAVEMENT  
 S.L.M. 346+84.68

Grid: Northing: 697328.002 Easting: 1621880.92



RECORD:  
 FD 1 1/2" SQ. BOLT  
 3" DEEP  
 6/28/85, I.S.

FD SQ. BOLT  
 1 1/2" DOWN  
 GPS, REF24  
 8/5/13, DCH

SET MAG/WASHER  
 GPS, NEWREF24  
 4/11/14, DCH