

O.D.O.T. DISTRICT 2 SURVEY OFFICE (USE ONLY)

PERSONNEL

REFERENCE NO. 24

SHEET 30 OF 52

NOTES RHOADES

DATE 8/10/22

ROUTE US 20A

H.C. AUBLE

WEATHER SUNNY

COUNTY LUCAS

R.C. NIESE

TEMP. 72°

TOWNSHIP MONCLOVA

WHITAKER

DWG BY RHOADES

PID PAVETRAIN

SECTION 31

T 2

TYPE MONUMENT MNOBOX W/1" IPIN

~~ON SURFACE~~ - BELOW ON

OFFSET 1' $\overline{L} : \overline{R}$

- TO - EDGE PAVEMENT

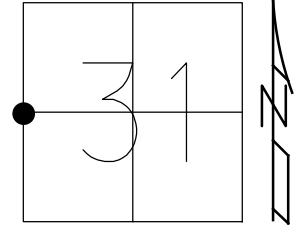
STATION: 362+03.62

HORIZ.DATUM: NAD83 2011

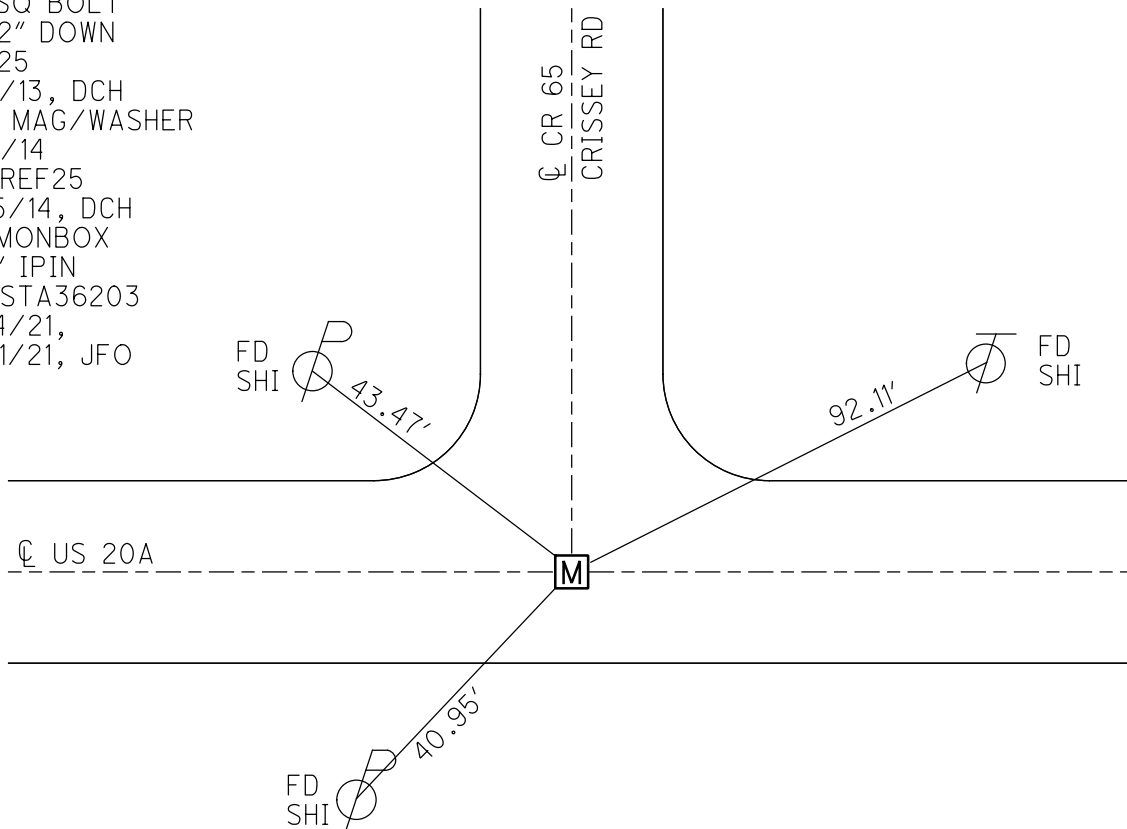
GEOID: NAVD88 2012A

GRID: NORTHING: 697264.955

EASTING: 1623398.163



RECORD:
 FD 1 1/2" SQ BOLT
 3" DOWN
 6/28/85, IS
 FD SQ BOLT
 1 1/2" DOWN
 REF25
 8/5/13, DCH
 SET MAG/WASHER
 4/11/14
 NEWREF25
 5/15/14, DCH
 FD MONBOX
 W/1" IPIN
 NEWSTA36203
 4/14/21,
 5/21/21, JFO



O.D.O.T. DISTRICT 2 SURVEY OFFICE (USE ONLY)

PERSONNEL

REFERENCE NO. 24

SHEET 30 OF 52

NOTES O'DONNELL

DATE 4/14/21

ROUTE US 20A

H.C. O'DONNELL

WEATHER FAIR

COUNTY LUCAS

R.C. RHOADES

TEMP. 59°

TOWNSHIP MONCLOVA

SECTION 31

DWG BY RHOADES PID 106393

T 2

TYPE MONUMENT MNOBOX W/1" IPIN

~~ON SURFACE~~ - BELOW ON

OFFSET Q PAVEMENT - LT : RT

- TO - EDGE PAVEMENT

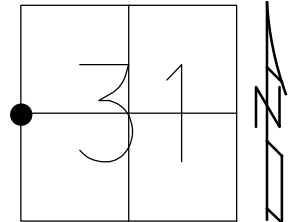
STATION: 362+03.62

HORZ.DATUM: NAD83 2011

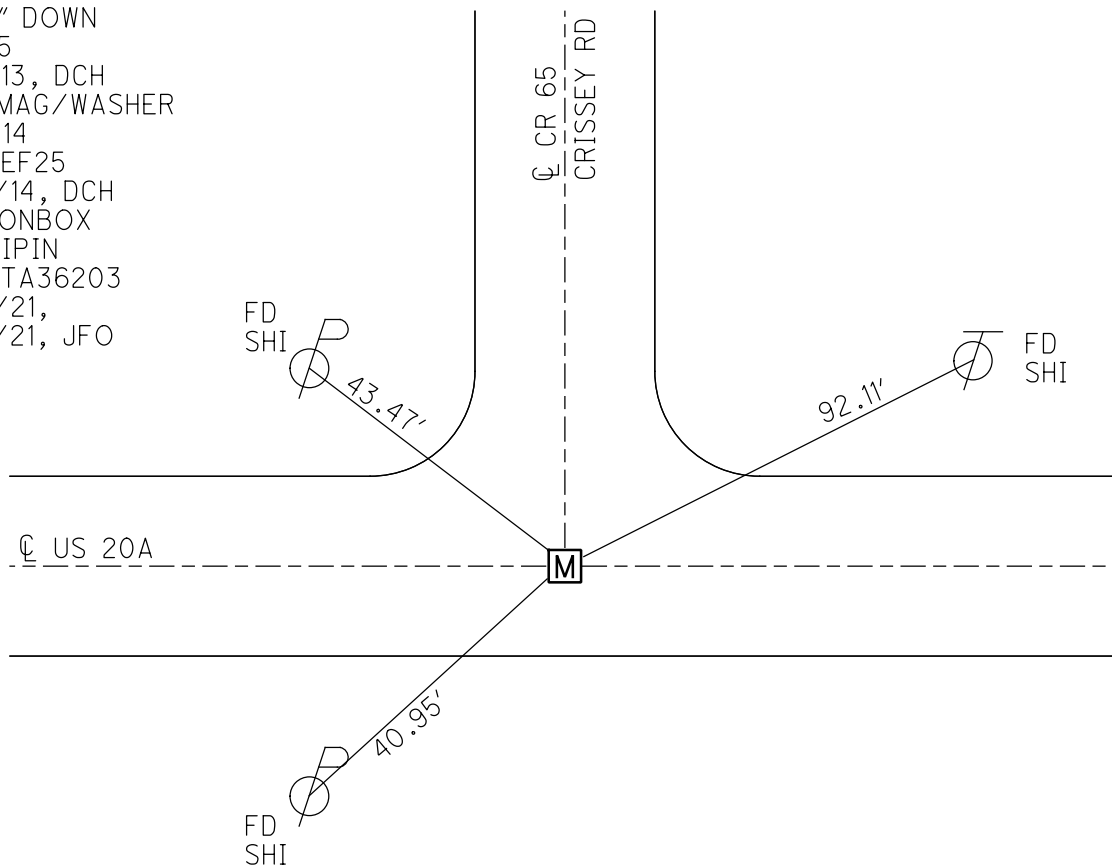
GEOID: NAVD88 2012A

GRID: NORTHING: 697264.933

EASTING: 1623398.126



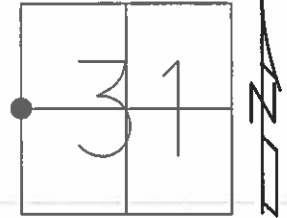
RECORD:
 FD 1 1/2" SQ BOLT
 3" DOWN
 6/28/85, IS
 FD SQ BOLT
 1 1/2" DOWN
 REF25
 8/5/13, DCH
 SET MAG/WASHER
 4/11/14
 NEWREF25
 5/15/14, DCH
 FD MONBOX
 W/1" IPIN
 NEWSTA36203
 4/14/21,
 5/21/21, JFO



O.D.O.T. DISTRICT 2 SURVEY OFFICE (USE ONLY)

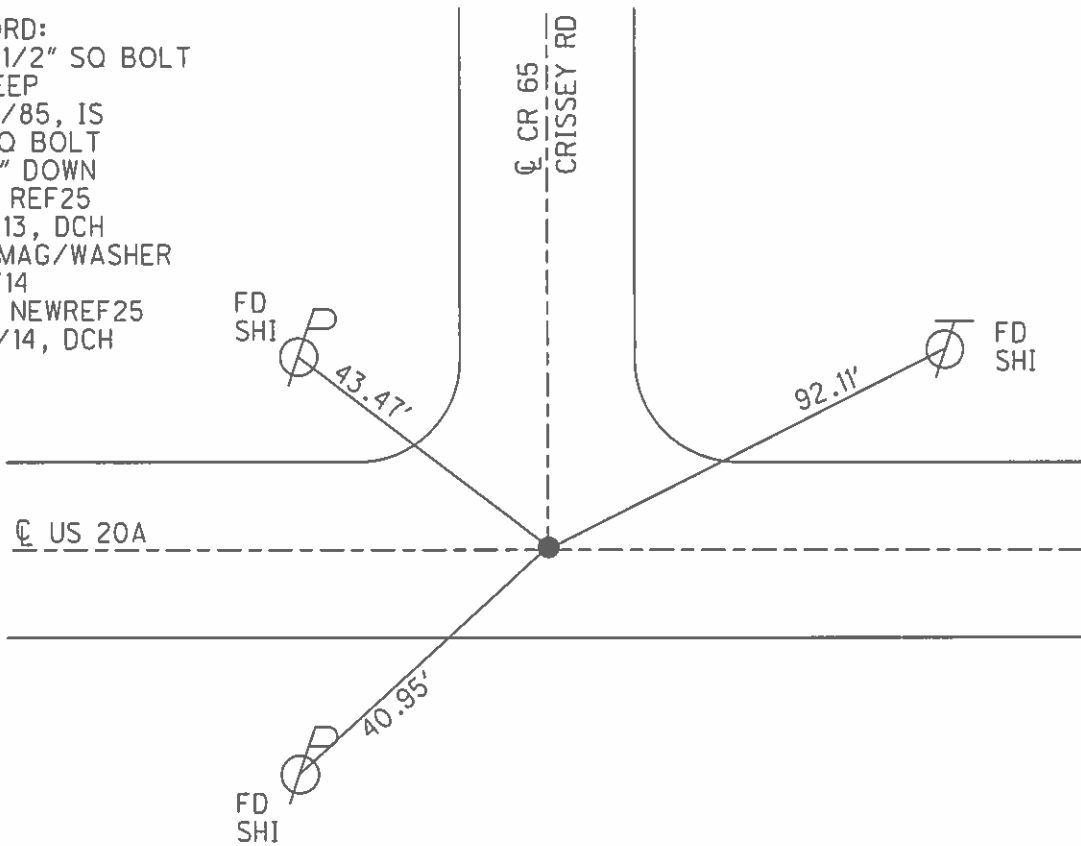
PERSONNEL _____ REFERENCE NO. 24 SHEET 29 OF 48
 NOTES WESTFALL DATE 8/5/13 ROUTE US 20A
 H.C. ROUSOS WEATHER SUNNY COUNTY LUCAS
 R.C. WESTFALL TEMP. 67° TOWNSHIP MONCLOVA
 _____ KEFFER _____ SECTION 31
 T 2

TYPE MONUMENT SQ BOLT
~~ON SURFACE~~ - BELOW 1 1/2"
 LEFT - ☉ PAV'T - RIGHT -
- TO - EDGE PAVEMENT
 S.L.M. 362+03.25



GRID: NORTHING 697264.953 EASTING: 1623398.033

RECORD:
 FD 1 1/2" SQ BOLT
 3" DEEP
 6/28/85, IS
 FD SQ BOLT
 1 1/2" DOWN
 GPS, REF25
 8/5/13, DCH
 SET MAG/WASHER
 4/11/14
 GPS, NEWREF25
 5/15/14, DCH



O.D.O.T. DISTRICT 2 SURVEY OFFICE (USE ONLY)

PERSONNEL _____ REFERENCE NO. 24 SHEET 23 OF 42
 NOTES WESTFALL DATE 8/5/13 ROUTE US 20A
 H.C. ROUSOS WEATHER SUNNY COUNTY LUCAS
 R.C. WESTFALL TEMP. 67° TOWNSHIP MONCLOVA
 _____ SECTION 31
 _____ T 2

TYPE MONUMENT SQ. BOLT

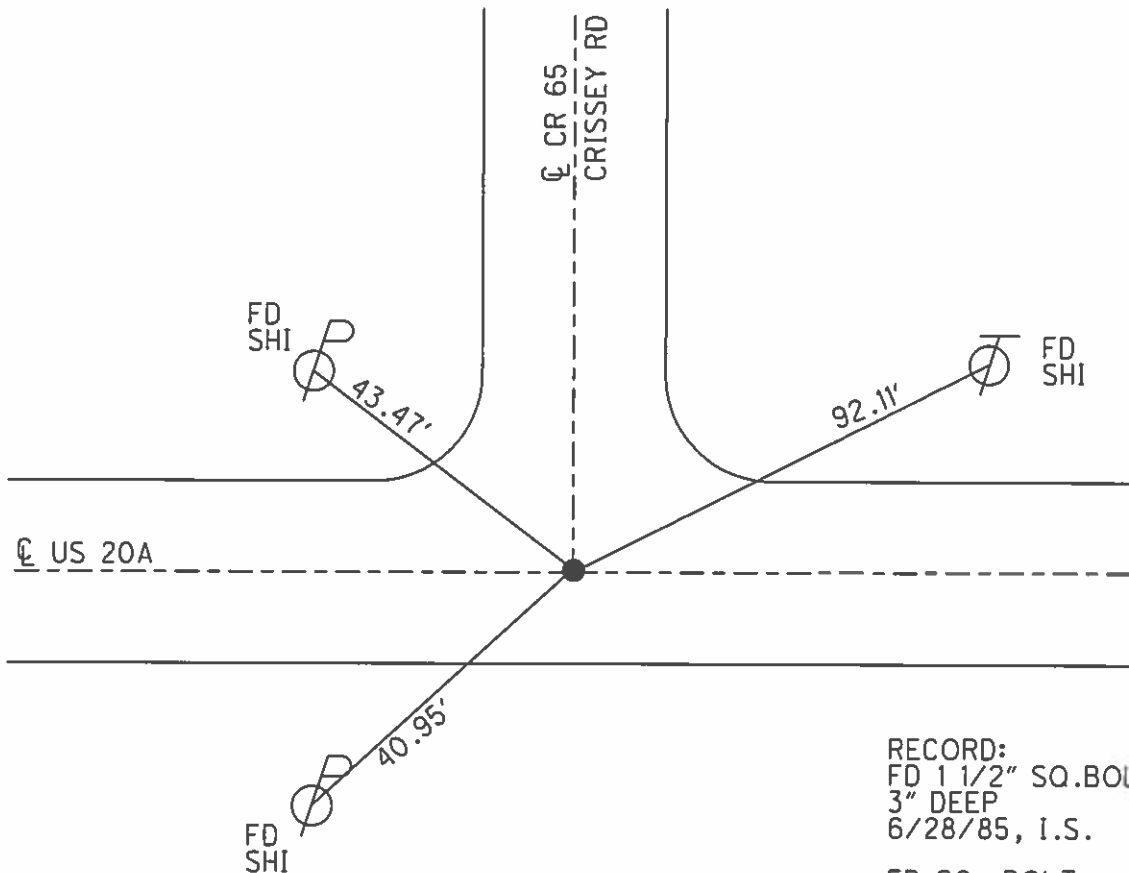
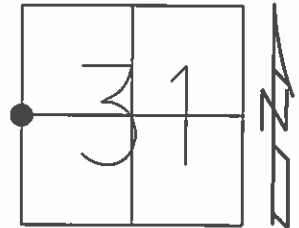
~~ON SURFACE~~ - BELOW 1 1/2"

LEFT - ☉ PAV'T - RIGHT - _____

_____ TO _____ EDGE PAVEMENT

S.L.M. 362+03.25

Grid: Northing: 697264.953 Easting: 1623398.033



RECORD:
 FD 1 1/2" SQ. BOLT
 3" DEEP
 6/28/85, I.S.

FD SQ. BOLT
 1 1/2" DOWN
 GPS, REF25
 8/5/13, DCH

SET MAG/WASHER
 4/11/14
 GPS, NEWREF25
 5/15/14, DCH