

O.D.O.T. DISTRICT 2 SURVEY OFFICE (USE ONLY)

PERSONNEL

REFERENCE NO. 28

SHEET 33 OF 49

NOTES WESTFALL

DATE 8-5-13

ROUTE US 20A

H.C. ROUSOS

WEATHER SUNNY

COUNTY LUCAS

R.C. WESTFALL

TEMP. 67°

TOWNSHIP MONCLOVA

KEFFER

SECTION 32

DWG BY JAMES PID NO PID

T 2 N

TYPE MONUMENT SQUARE BOLT

~~ON SURFACE~~ - BELOW 2"

OFFSET \odot PAVEMENT - _____ LT : RT

- _____ TO _____ EDGE PAVEMENT

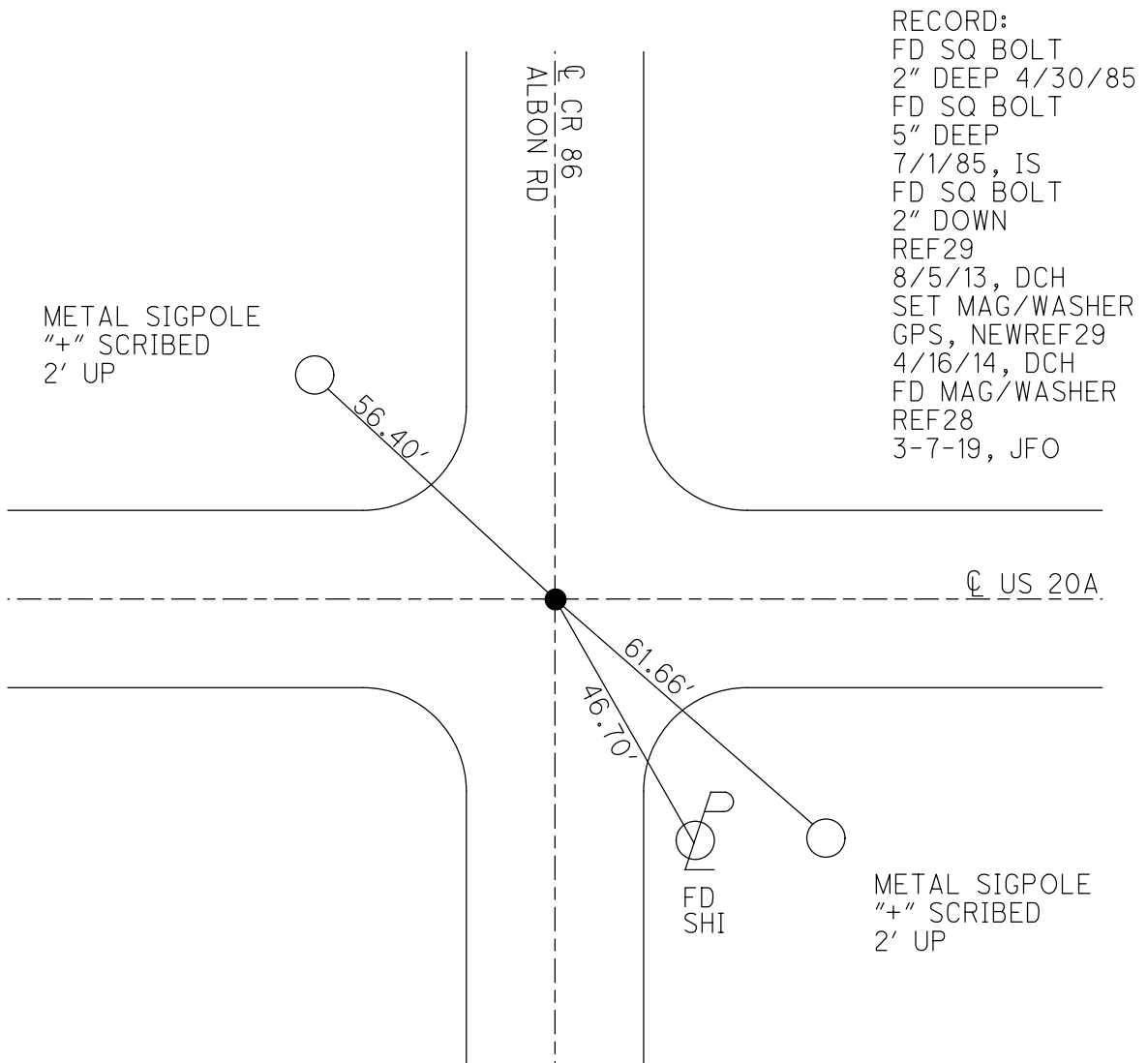
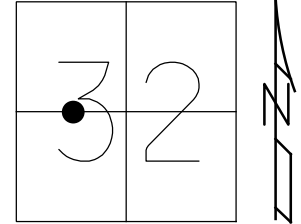
STATION: 427+21.95

HORIZ.DATUM: NAD83 2011

GEOID: NAVD88 2012A

GRID: NORTHING: 697166.342

EASTING: 1629916.034



O.D.O.T. DISTRICT 2 SURVEY OFFICE (USE ONLY)

PERSONNEL _____ REFERENCE NO. 28 SHEET 33 OF 48

NOTES WESTFALL DATE 8/5/13 ROUTE US 20A
 H.C. ROUSOS WEATHER SUNNY COUNTY LUCAS
 R.C. WESTFALL TEMP. 67° TOWNSHIP MONCLOVA
 _____ KEFFER _____ SECTION 32
 _____ T 2

TYPE MONUMENT SQUARE BOLT

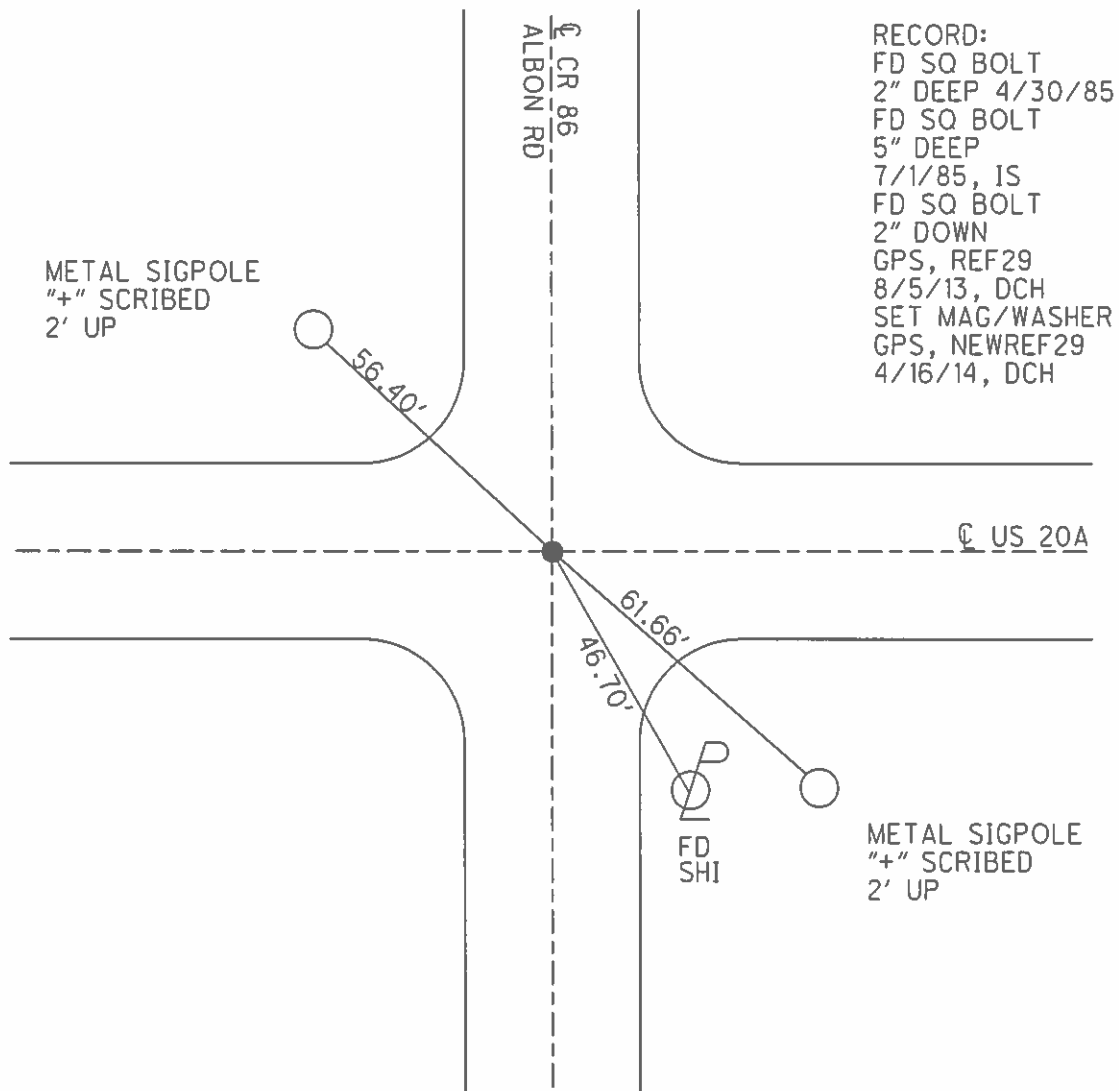
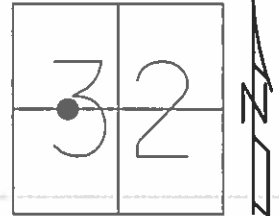
~~ON SURFACE~~ - BELOW 2'

LEFT - ☉ PAV'T - RIGHT - _____

_____ TO _____ EDGE PAVEMENT

S.L.M. 427+21.95

Grid: Northing: 697166.412 Easting: 1629915.94

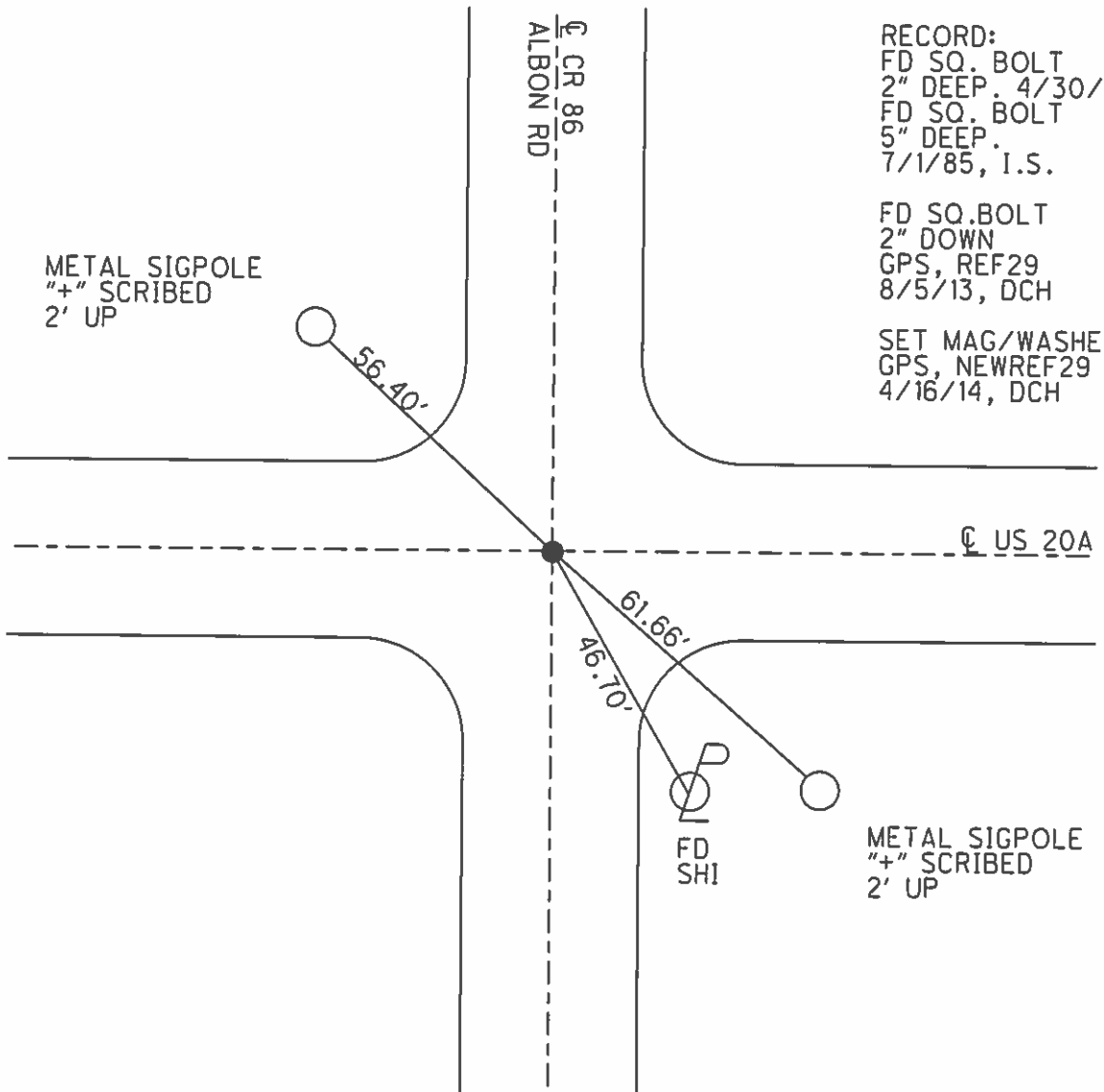
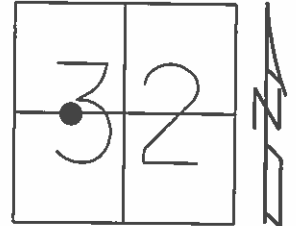


O.D.O.T. DISTRICT 2 SURVEY OFFICE (USE ONLY)

PERSONNEL _____ REFERENCE NO. 28 SHEET 27 OF 42
 NOTES WESTFALL DATE 8/5/13 ROUTE US 20A
 H.C. ROUSOS WEATHER SUNNY COUNTY LUCAS
 R.C. WESTFALL TEMP. 67° TOWNSHIP MONCLOVA
 _____ SECTION 32
 _____ T 2

TYPE MONUMENT SQUARE BOLT
~~ON SURFACE~~ - BELOW 2'
 LEFT - ☉ PAV'T - RIGHT - _____
 - TO - EDGE PAVEMENT
 S.L.M. 427+21.95

Grid: Northing: 697166.412 Easting: 1629915.94



RECORD:
 FD SQ. BOLT
 2" DEEP. 4/30/85
 FD SQ. BOLT
 5" DEEP.
 7/1/85, I.S.

 FD SQ. BOLT
 2" DOWN
 GPS, REF29
 8/5/13, DCH

 SET MAG/WASHER
 GPS, NEWREF29
 4/16/14, DCH

METAL SIGPOLE
 "+" SCRIBED
 2' UP

METAL SIGPOLE
 "+" SCRIBED
 2' UP

FD
 SHI