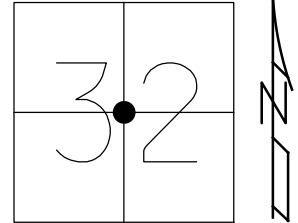


O.D.O.T. DISTRICT 2 SURVEY OFFICE (USE ONLY)

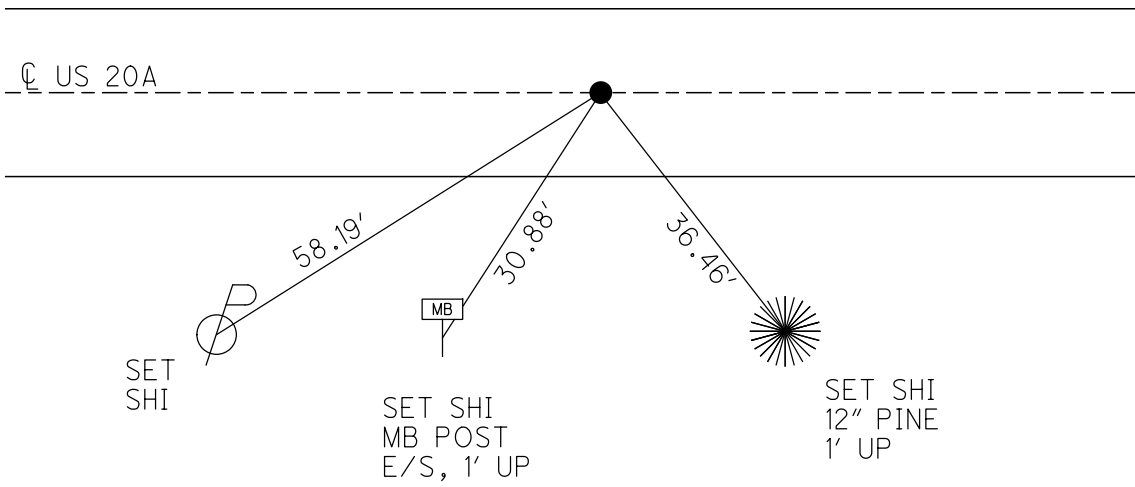
PERSONNEL _____ REFERENCE NO. 30 SHEET 34 OF 49
 NOTES WESTFALL DATE 8-5-13 ROUTE US 20A
 H.C. ROUSOS WEATHER SUNNY COUNTY LUCAS
 R.C. WESTFALL TEMP. 67° TOWNSHIP MONCLOVA
 KEFFER SECTION 32
 DWG BY JAMES PID NO PID T 2 N

TYPE MONUMENT P.K. NAIL
 ON SURFACE - ~~BELOW~~ ON
 OFFSET ☉ PAVEMENT - _____ LT : RT
 - _____ TO - _____ EDGE PAVEMENT
 STATION: 440+56.27



HORZ.DATUM: NAD83 2011 GEOID: NAVD88 2012A
 GRID: NORTHING: 697148.688 EASTING: 1631250.338

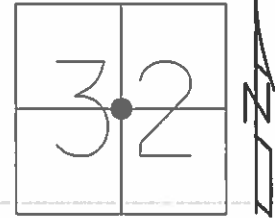
- RECORD:
 FD 1 1/2" IRON BOLT
 2" DEEP. 4/30/85
 FD 1 1/2" IRON BOLT
 4" DEEP.
 7/1/85, IS
 FD P.K.NAIL
 REF30
 8/5/13, DCH
 SET MAG/WASHER
 NEWREF30
 4/16/14, DCH
 FD MAG/WASHER
 REF30
 3-7-19, JFO



O.D.O.T. DISTRICT 2 SURVEY OFFICE (USE ONLY)

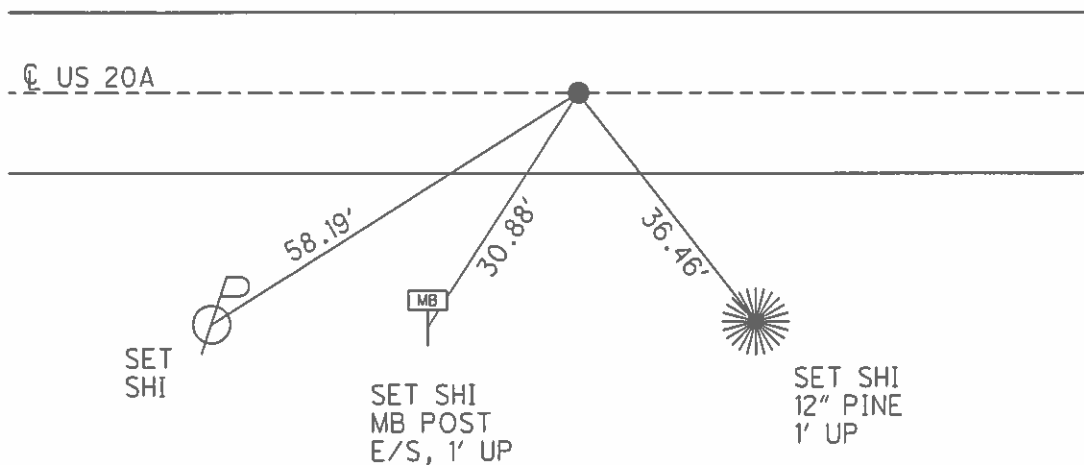
PERSONNEL _____ REFERENCE NO. 30 SHEET 34 OF 48
 NOTES WESTFALL DATE 8/5/13 ROUTE US 20A
 H.C. ROUSOS WEATHER SUNNY COUNTY LUCAS
 R.C. WESTFALL TEMP. 67° TOWNSHIP MONCLOVA
 _____ SECTION 32
 _____ T 2

TYPE MONUMENT P.K.NAIL
 ON SURFACE - ~~BELOW~~ ON _____
 LEFT - ☉ PAV'T - RIGHT - _____
 - TO - EDGE PAVEMENT
 S.L.M. 440+56.27



GRID: NORTHING: 697148.693 EASTING: 1631250.301

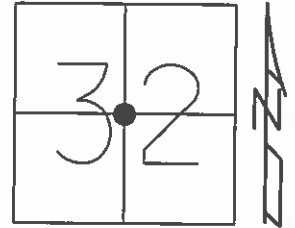
RECORD:
 FD 1 1/2" IRON BOLT
 2" DEEP. 4/30/85
 FD 1 1/2" IRON BOLT
 4" DEEP.
 7/1/85, IS
 FD P.K.NAIL
 GPS, REF30
 8/5/13, DCH
 SET MAG/WASHER
 GPS, NEWREF30
 4/16/14, DCH



O.D.O.T. DISTRICT 2 SURVEY OFFICE (USE ONLY)

PERSONNEL _____ REFERENCE NO. 30 SHEET 28 OF 42
 NOTES WESTFALL DATE 8/5/13 ROUTE US 20A
 H.C. ROUSOS WEATHER SUNNY COUNTY LUCAS
 R.C. WESTFALL TEMP. 67° TOWNSHIP MONCLOVA
 _____ SECTION 32
 _____ T 2

TYPE MONUMENT P.K.NAIL
 ON SURFACE - ~~BELOW~~ ON _____
 LEFT - ☉ PAV'T - RIGHT - _____
 - TO - EDGE PAVEMENT
 S.L.M. 440+56.27
 Grid: Northing: 697148.693 Easting: 1631250.301



RECORD:
 FD 1 1/2" IRON BOLT
 2" DEEP. 4/30/85
 FD 1 1/2" IRON BOLT
 4" DEEP.
 7/1/85, I.S.

FD P.K.NAIL
 GPS, REF30
 8/5/13, DCH

SET MAG/WASHER
 GPS, NEWREF30
 4/16/14, DCH

