

O.D.O.T. DISTRICT 2 SURVEY OFFICE (USE ONLY)

PERSONNEL

REFERENCE NO. 30 A

SHEET 35 OF 49

NOTES WESTFALL
 H.C. ROUSOS
 R.C. WESTFALL
KEFFER

DATE 8-6-13
 WEATHER FAIR
 TEMP. 71°

ROUTE US 20A
 COUNTY LUCAS
 TOWNSHIP MONCLOVA
 SECTION 32

DWG BY JAMES PID NO PID

T 2 N

TYPE MONUMENT R.R. SPIKE

ON SURFACE - BELOW ON

OFFSET \odot PAVEMENT - LT : RT
- TO - EDGE PAVEMENT

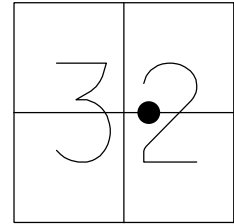
STATION: 449+28.89

HORZ. DATUM: NAD83 2011

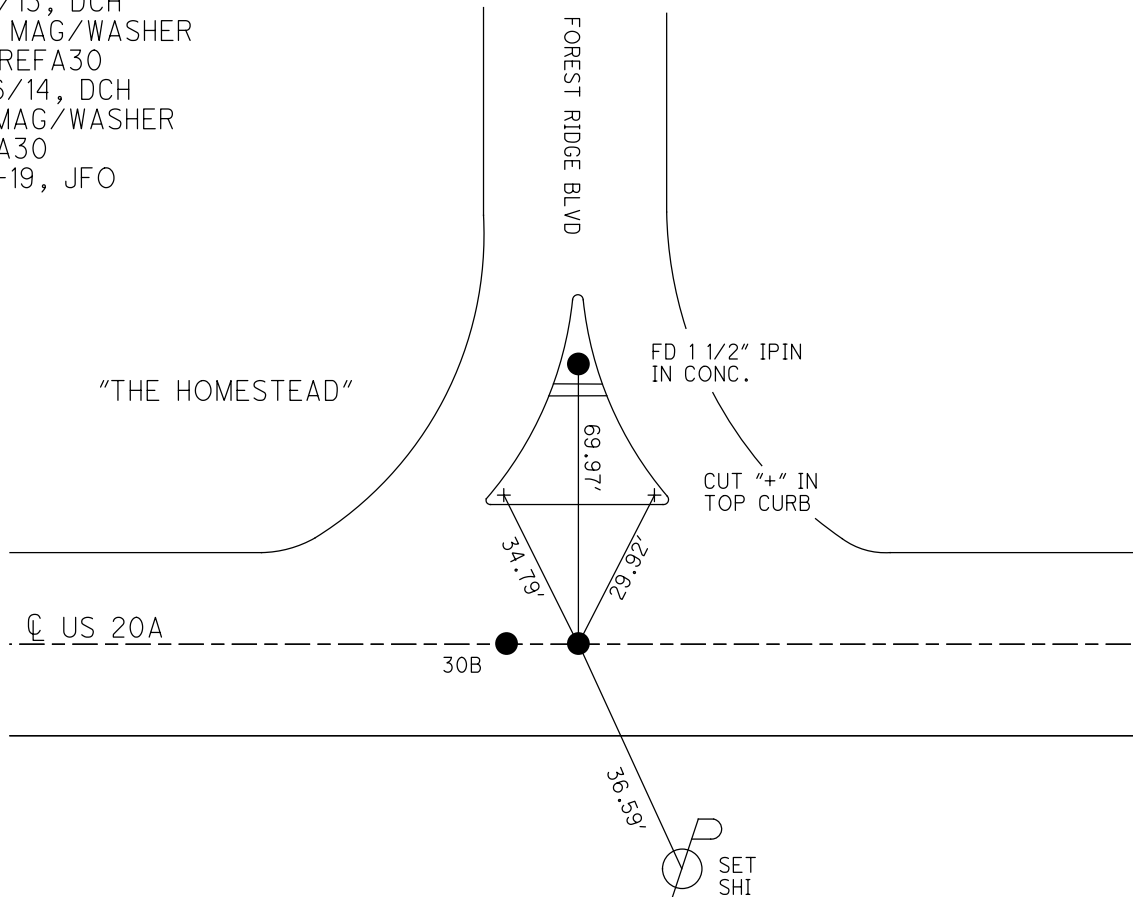
GEOID: NAVD88 2012A

GRID: NORTHING: 697136.829

EASTING: 1632122.972



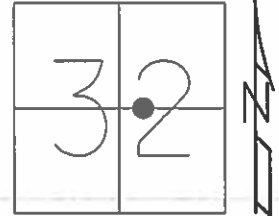
RECORD:
 FD RR SPIKE
 REFA30
 FD MAG NAIL
 REFB30
 8/6/13, DCH
 SET MAG/WASHER
 NEWREFA30
 4/16/14, DCH
 FD MAG/WASHER
 REFA30
 3-7-19, JFO



O.D.O.T. DISTRICT 2 SURVEY OFFICE (USE ONLY)

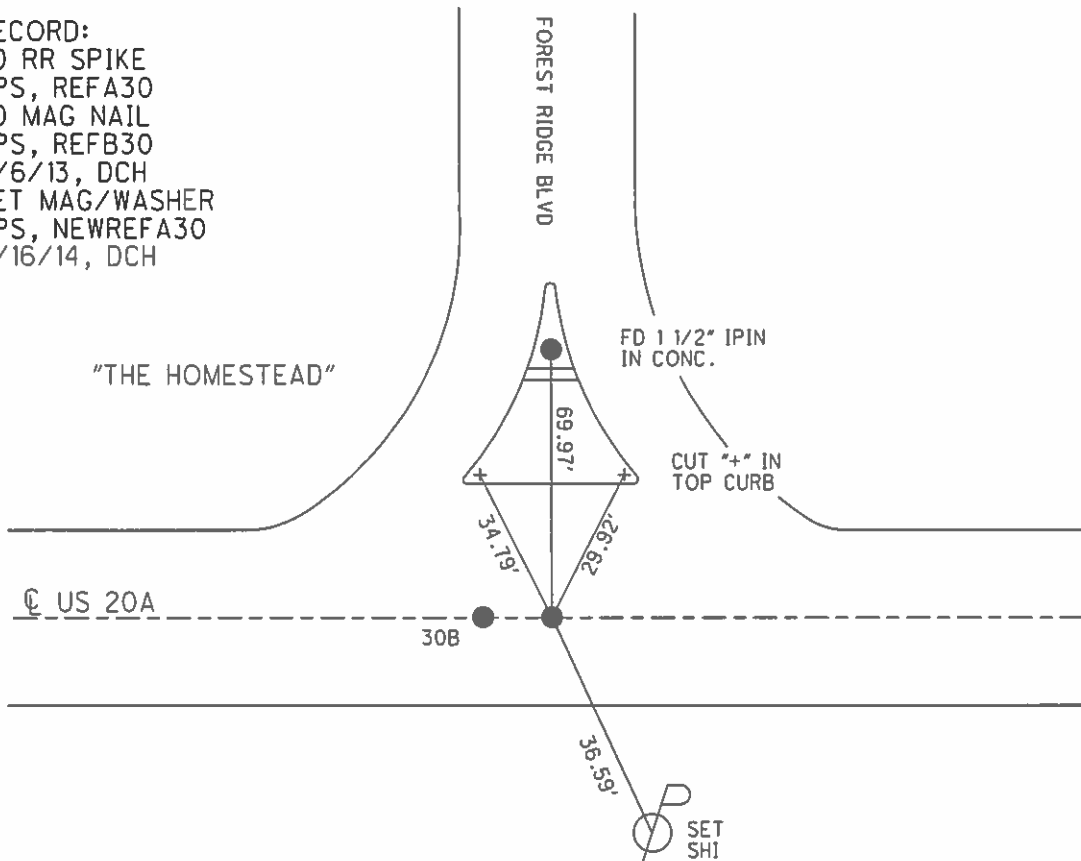
PERSONNEL _____ REFERENCE NO. 30 A SHEET 35 OF 48
 NOTES WESTFALL DATE 8/6/13 ROUTE US 20A
 H.C. ROUSOS WEATHER FAIR COUNTY LUCAS
 R.C. WESTFALL TEMP. 71° TOWNSHIP MONCLOVA
 _____ KEFFER _____ SECTION 32
 T 2

TYPE MONUMENT R.R.SPIKE
 ON SURFACE - ~~BELOW~~ ON _____
 LEFT - ☉ PAV'T - RIGHT _____
 - TO - EDGE PAVEMENT
 S.L.M. 449+28.89



GRID: NORTHING: 697136.974 EASTING: 1632122.92

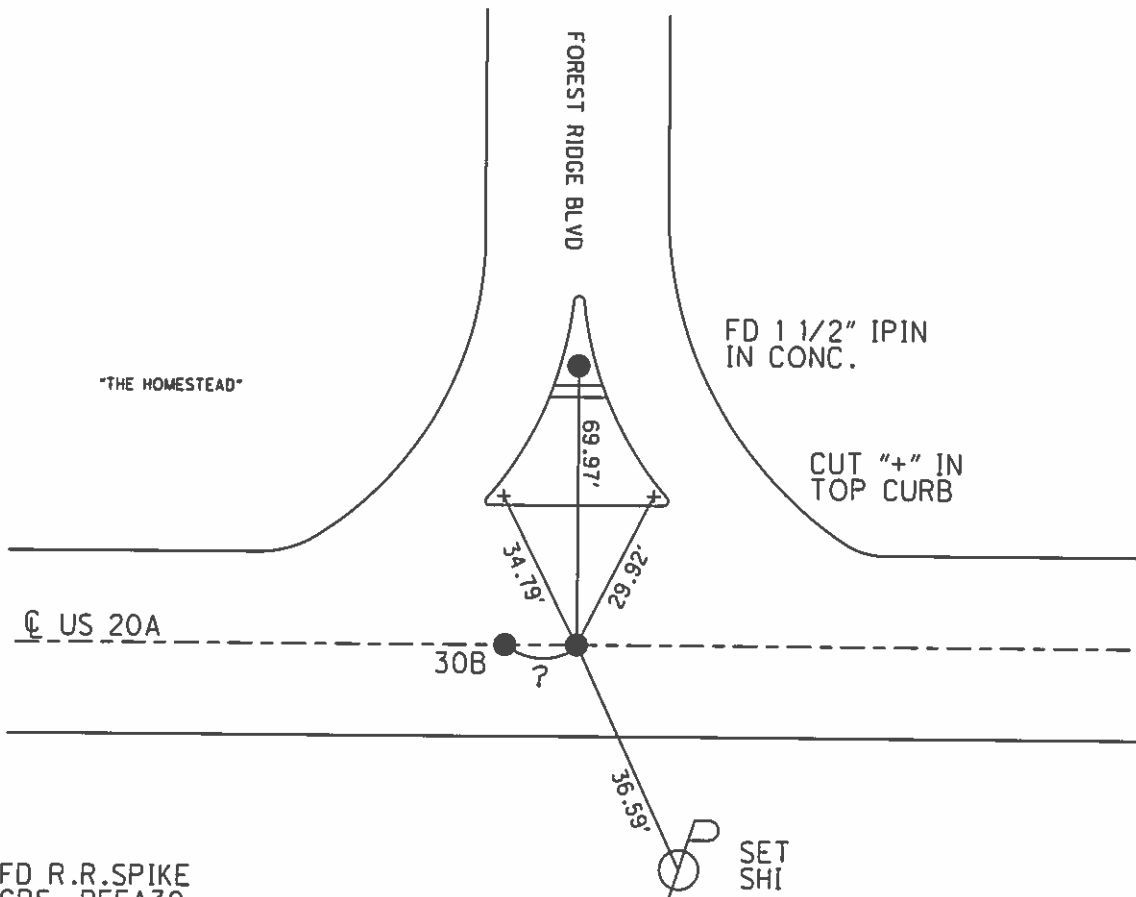
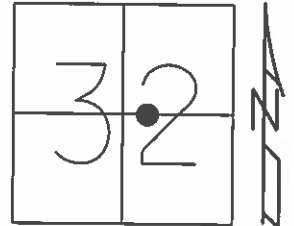
RECORD:
 FD RR SPIKE
 GPS, REFA30
 FD MAG NAIL
 GPS, REFB30
 8/6/13, DCH
 SET MAG/WASHER
 GPS, NEWREFA30
 4/16/14, DCH



O.D.O.T. DISTRICT 2 SURVEY OFFICE (USE ONLY)

PERSONNEL _____ REFERENCE NO. 30 A SHEET 29 OF 42
 NOTES WESTFALL DATE 8/6/13 ROUTE US 20A
 H.C. ROUSOS WEATHER FAIR COUNTY LUCAS
 R.C. WESTFALL TEMP. 71° TOWNSHIP MONCLOVA
 _____ SECTION 32
 _____ T 2

TYPE MONUMENT R.R.SPIKE
 ON SURFACE - ~~BELOW~~ ON _____
 LEFT - ☉ PAV'T - RIGHT - _____
 _____ TO _____ EDGE PAVEMENT
 S.L.M. 449+28.89
 Grid: Northing: 697136.974 Easting: 1632122.92



FD R.R.SPIKE
 GPS, REFA30
 FD MAG NAIL
 GPS, REFB30
 8/6/13, DCH

SET MAG/WASHER
 GPS, NEWREFA30
 4/16/14, DCH