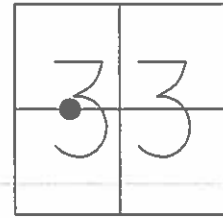


O.D.O.T. DISTRICT 2 SURVEY OFFICE (USE ONLY)

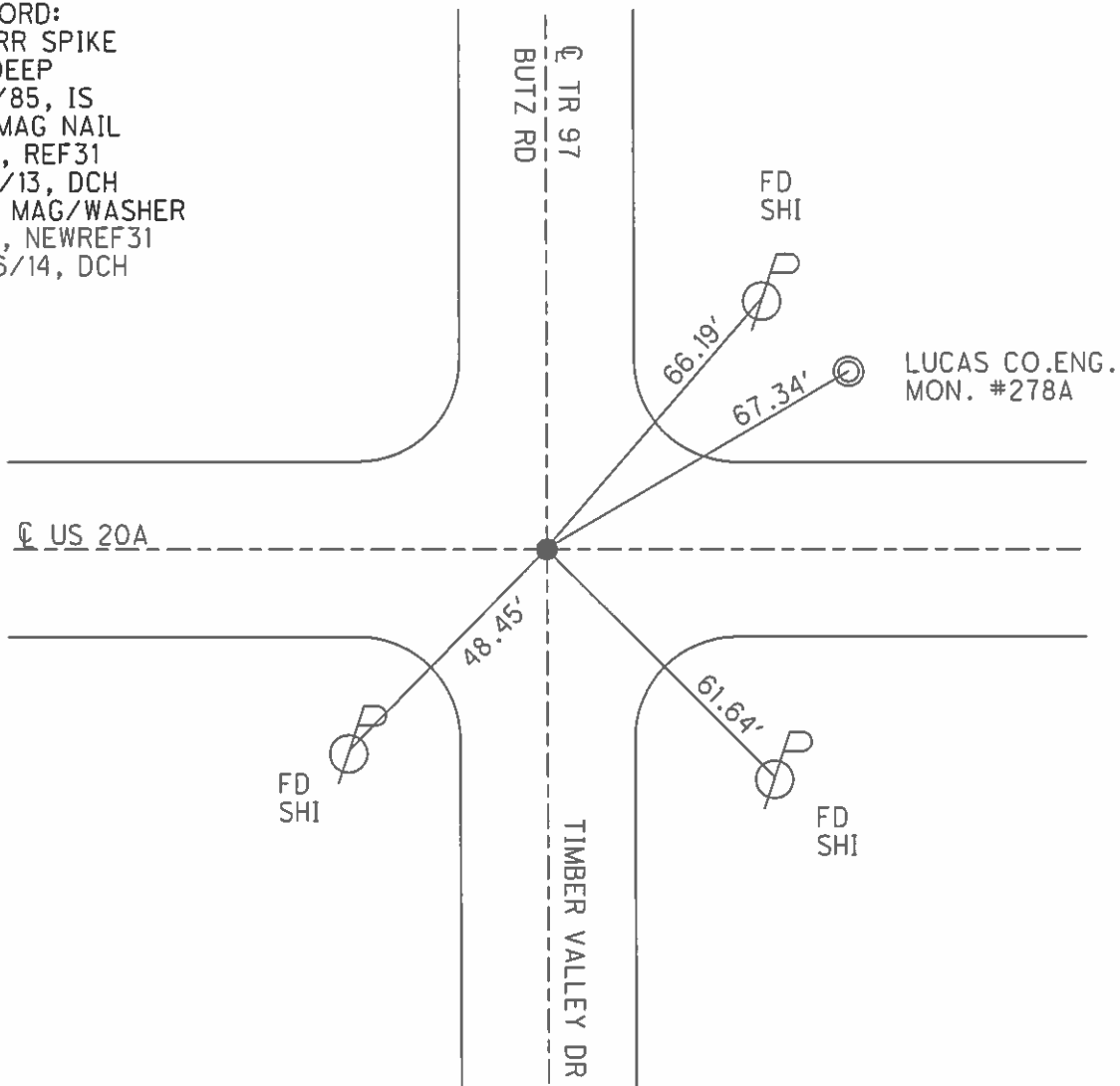
PERSONNEL _____ REFERENCE NO. 31 SHEET 36 OF 48
NOTES WESTFALL DATE 8/6/13 ROUTE US 20A
H.C. ROUSOS WEATHER FAIR COUNTY LUCAS
R.C. WESTFALL TEMP. 71° TOWNSHIP MONCLOVA
KEFFER SECTION 33
T 2

TYPE MONUMENT MAG NAIL
ON SURFACE - ~~BELOW~~ ON _____
LEFT - ☉ PAV'T - RIGHT - _____
- TO - EDGE PAVEMENT
S.L.M. 480+54.77



GRID: NORTHING: 697083.102 EASTING: 1635248.207

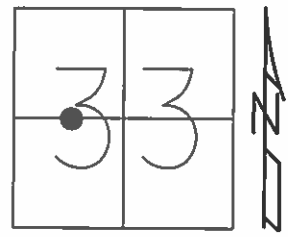
RECORD:
FD RR SPIKE
3" DEEP
7/1/85, IS
FD MAG NAIL
GPS, REF31
8/5/13, DCH
SET MAG/WASHER
GPS, NEWREF31
4/16/14, DCH



O.D.O.T. DISTRICT 2 SURVEY OFFICE (USE ONLY)

PERSONNEL _____ REFERENCE NO. 31 SHEET 30 OF 42
 NOTES WESTFALL DATE 8/6/13 ROUTE US 20A
 H.C. ROUSOS WEATHER FAIR COUNTY LUCAS
 R.C. WESTFALL TEMP. 71° TOWNSHIP MONCLOVA
 _____ SECTION 33
 _____ T 2

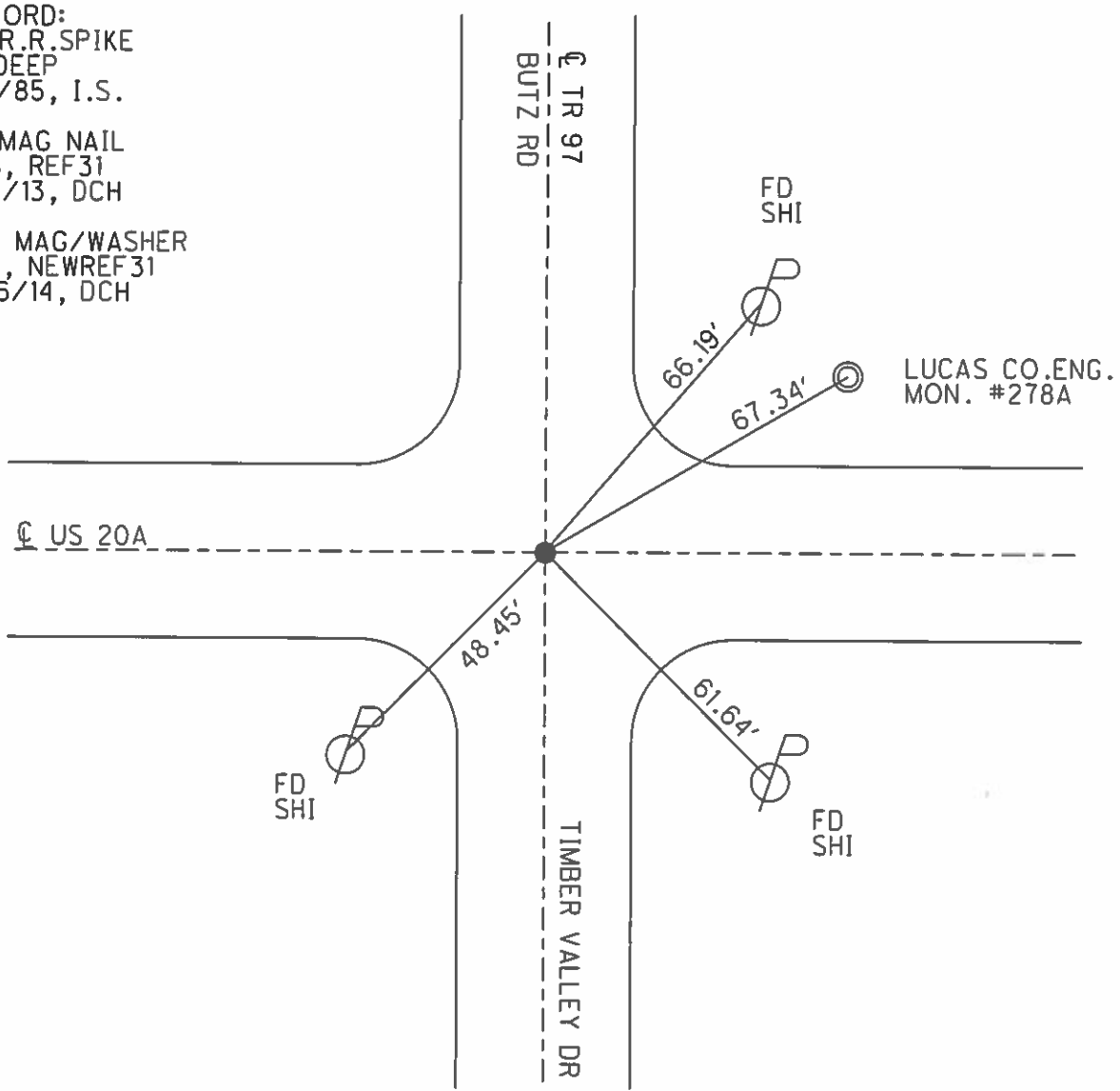
TYPE MONUMENT MAG NAIL
 ON SURFACE - ~~BELOW~~ ON _____
 LEFT - ☉ PAV'T - RIGHT - _____
 - TO - EDGE PAVEMENT
 S.L.M. 480+54.77
 Grid: Northing: 697083.102 Easting: 1635248.207



RECORD:
 FD R.R. SPIKE
 3" DEEP
 7/1/85, I.S.

FD MAG NAIL
 GPS, REF31
 8/5/13, DCH

SET MAG/WASHER
 GPS, NEWREF31
 4/16/14, DCH



PERSONNEL	TITLE	PERSONNEL	TITLE
Stone	Notes		
Michalak	X		
Schroeder	H.C.		
Farr	FD		

COUNTY Lucas DATE 28 July 71
 S. R. US-20-A WEATHER Fair
 SEC. Alban Rd. - East TEMP. 75°

DESCRIPTION Alignment LEFT CENTER LINE RIGHT JOB NO.

