

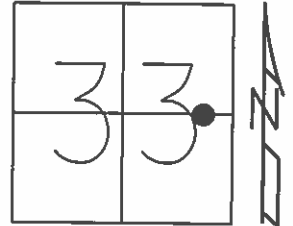


O.D.O.T. DISTRICT 2 SURVEY OFFICE (USE ONLY)

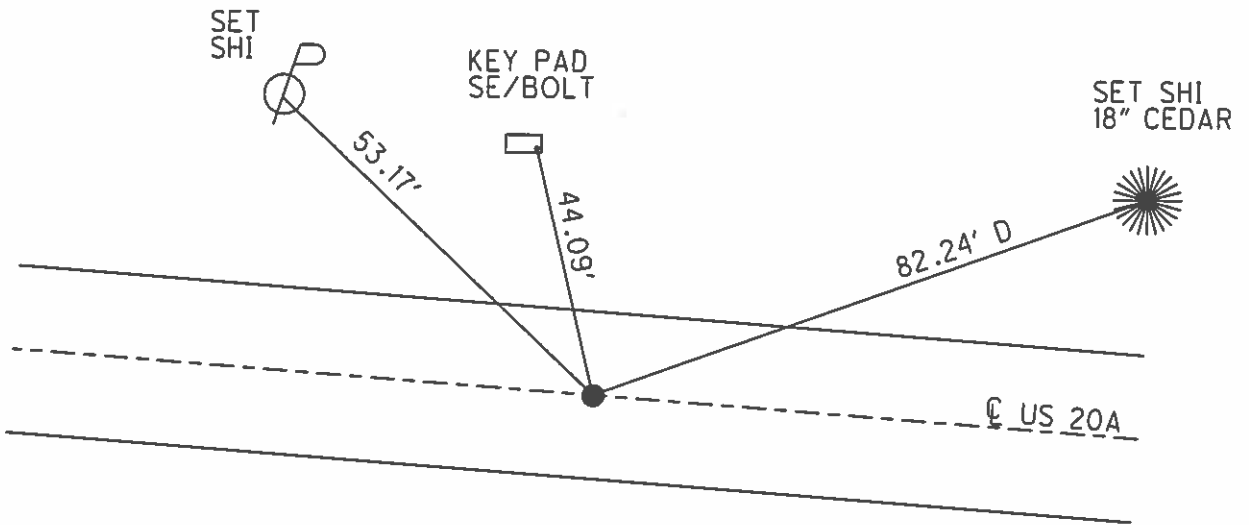
PERSONNEL \_\_\_\_\_ REFERENCE NO. 32 C SHEET 36 OF 42  
NOTES WESTFALL DATE 8/6/13 ROUTE US 20A  
H.C. ROUSOS WEATHER FAIR COUNTY LUCAS  
R.C. WESTFALL TEMP. 71° TOWNSHIP MONCLOVA  
SECTION 33  
T 2

TYPE MONUMENT R.R.SPIKE  
~~ON SURFACE~~ - BELOW 2"  
LEFT - ☉ PAV'T - RIGHT - \_\_\_\_\_  
\_\_\_\_\_ TO \_\_\_\_\_ EDGE PAVEMENT  
S.L.M. 513+66.62

Grid: Northing: 697043.424 Easting: 1638559.895



#6846  
HICKORY  
HOLLOW



RECORD:  
FD SM.R.R.SPIKE  
3" DEEP  
7/1/85, I.S.

FD R.R.SPIKE  
2" DOWN  
GPS, REF37  
8/6/13, DCH

SET MAG/WASHER  
GPS, NEWREF37  
4/17/14, DCH

PERSONNEL	TITLE	PERSONNEL	TITLE	COUNTY	DATE
Stone	Notes			Lucas	20 July 71
Michalek	π			U.S. 20-A	Weather Fair
Schroder	H.C.			SEC. Alton Rd. - East	TEMP. 75°
Farr	RR				

DESCRIPTION: Alignment LEFT CENTER LINE RIGHT JOB NO.

