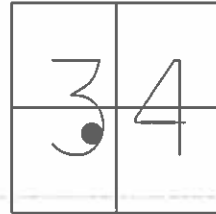


O.D.O.T. DISTRICT 2 SURVEY OFFICE (USE ONLY)

PERSONNEL _____ REFERENCE NO. 33 A SHEET 44 OF 48

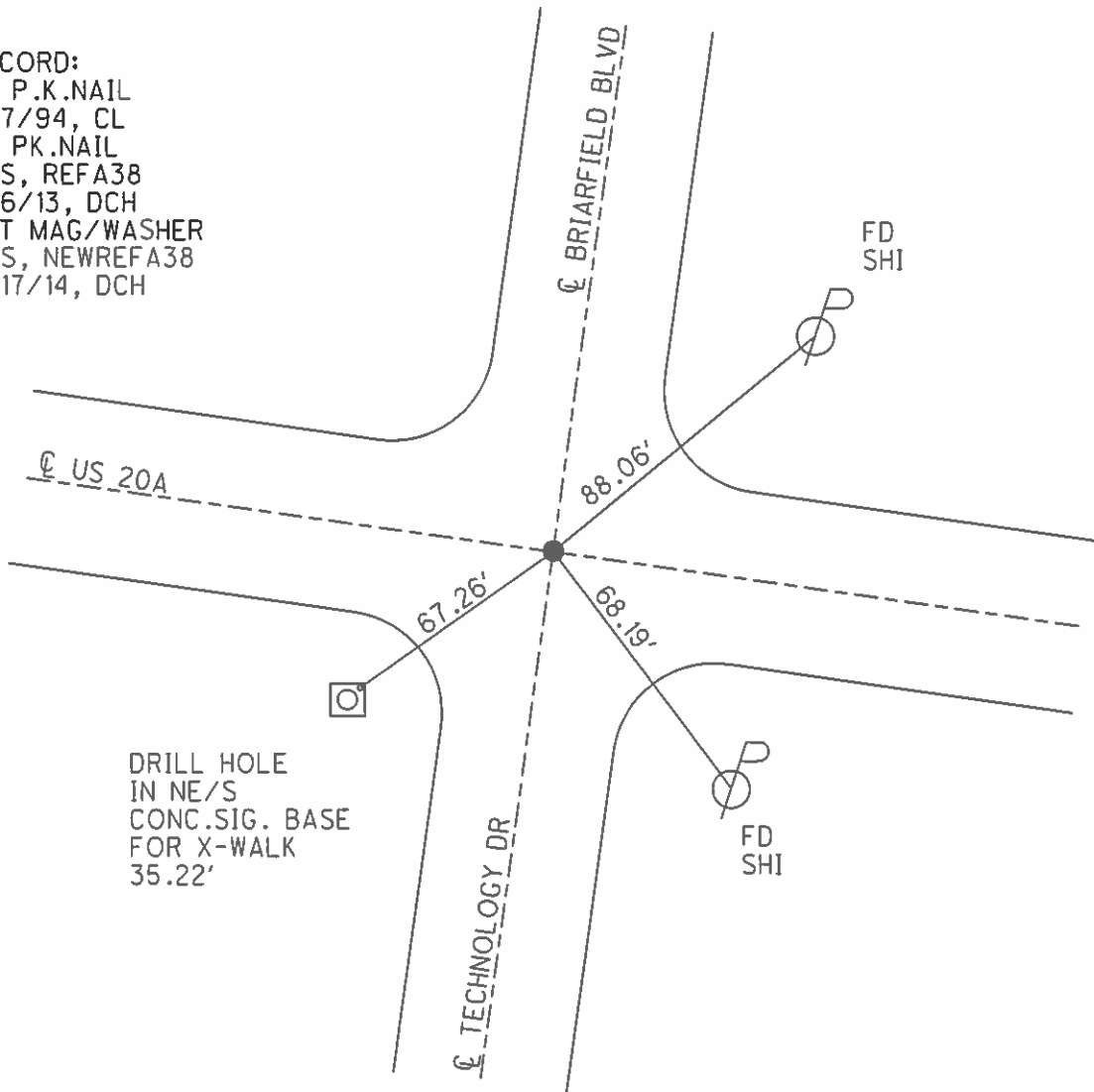
NOTES WESTFALL DATE 8/6/13 ROUTE US 20A
 H.C. ROUSOS WEATHER FAIR COUNTY LUCAS
 R.C. WESTFALL TEMP. 71° TOWNSHIP MONCLOVA
 _____ KEFFER _____ SECTION 34
 _____ T 2

TYPE MONUMENT P.K.NAIL
 ON SURFACE - ~~BELOW~~ _____ ON _____
 LEFT - ☉ PAV'T - RIGHT _____
 - _____ TO - _____ EDGE PAVEMENT
 S.L.M. 542+06.94



GRID: NORTHING: 696503.662 EASTING: 1641349.511

RECORD:
 FD P.K.NAIL
 9/7/94, CL
 FD PK.NAIL
 GPS, REFA38
 8/6/13, DCH
 SET MAG/WASHER
 GPS, NEWREFA38
 4/17/14, DCH

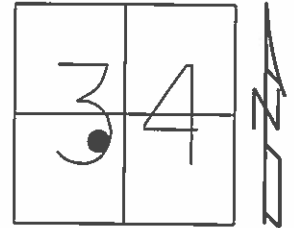


O.D.O.T. DISTRICT 2 SURVEY OFFICE (USE ONLY)

PERSONNEL _____ REFERENCE NO. 33 A SHEET 38 OF 42

NOTES WESTFALL DATE 8/6/13 ROUTE US 20A
H.C. ROUSOS WEATHER FAIR COUNTY LUCAS
R.C. WESTFALL TEMP. 71° TOWNSHIP MONCLOVA
SECTION 34
T 2

TYPE MONUMENT P.K.NAIL
ON SURFACE - ~~BELOW~~ ON _____
LEFT - ☉ PAV'T - RIGHT - _____
_____ TO _____ EDGE PAVEMENT
S.L.M. 542+06.94



Grid: Northing: 696503.662 Easting: 1641349.511

RECORD:
FD P.K.NAIL
9/7/94, CL

FD PK.NAIL
GPS, REFA38
8/6/13, DCH

SET MAG/WASHER
GPS, NEWREFA38
4/17/14, DCH

