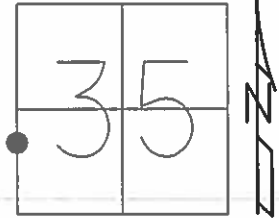


O.D.O.T. DISTRICT 2 SURVEY OFFICE (USE ONLY)

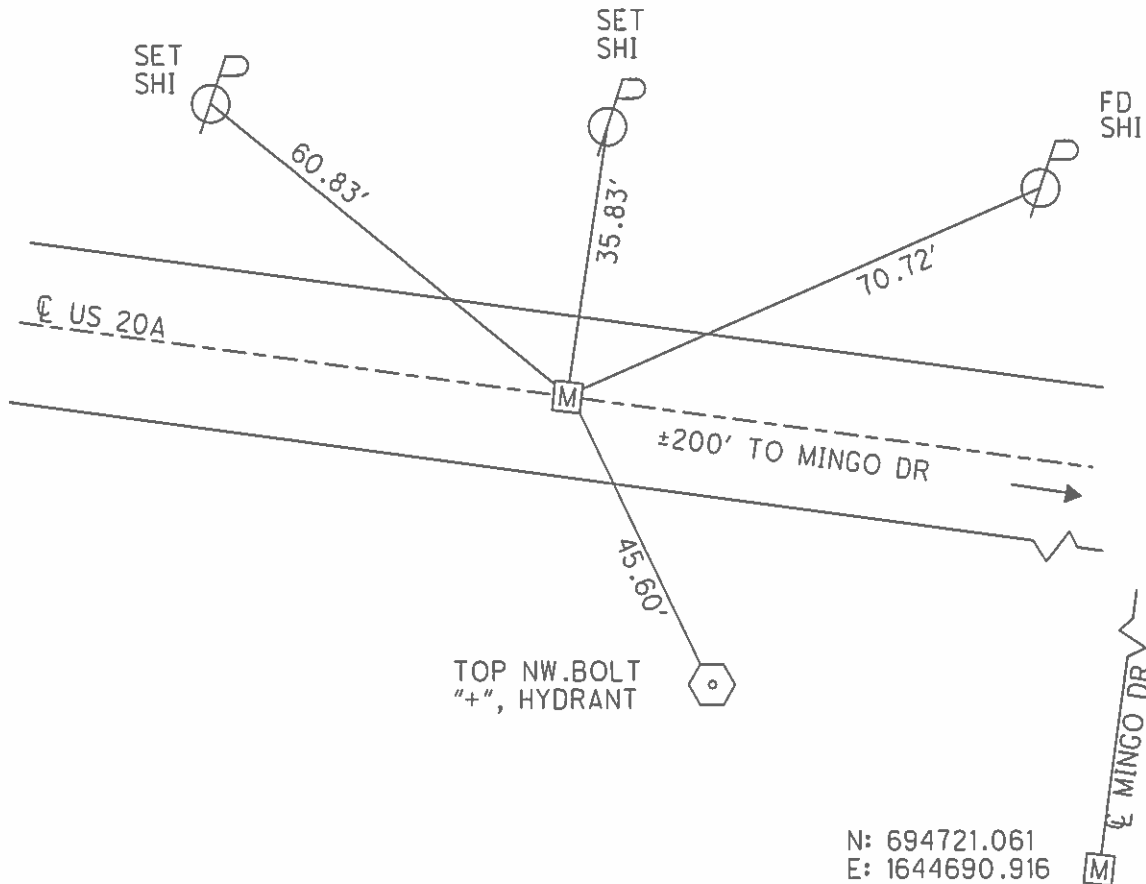
PERSONNEL _____ REFERENCE NO. 35 SHEET 46 OF 48
 NOTES WESTFALL DATE 8/7/13 ROUTE US 20A
 H.C. ROUSOS WEATHER FAIR COUNTY LUCAS
 R.C. WESTFALL TEMP. 73° TOWNSHIP MONCLOVA
 _____ KEFFER _____ SECTION 35
 _____ T 2

TYPE MONUMENT MON BOX
 ON SURFACE - ~~BELOW~~ ON
 LEFT - ☉ PAV'T - RIGHT ON
21.4' TO LT CURB EDGE
 S.L.M. 574+08.09



GRID: NORTHING: 695895.081 EASTING: 1644492.098

RECORD:
 FD MON BOX
 8/24/94, CL
 FD MON BOX
 GPS, REF40
 8/7/13, DCH



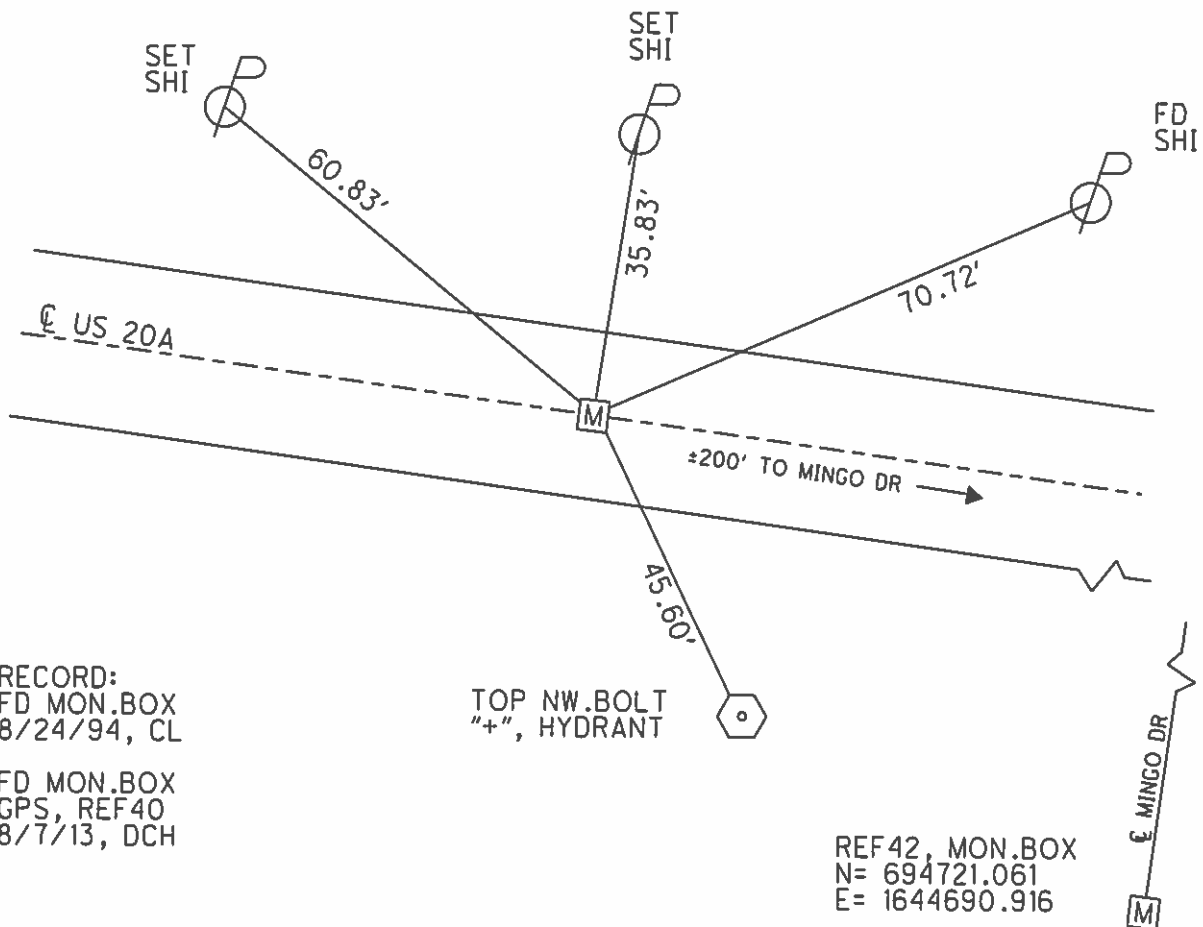
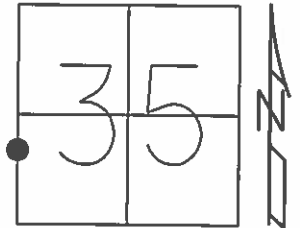
N: 694721.061
 E: 1644690.916

O.D.O.T. DISTRICT 2 SURVEY OFFICE (USE ONLY)

PERSONNEL _____ REFERENCE NO. 35 SHEET 40 OF 42
 NOTES WESTFALL DATE 8/7/13 ROUTE US 20A
 H.C. ROUSOS WEATHER FAIR COUNTY LUCAS
 R.C. WESTFALL TEMP. 73° TOWNSHIP MONCLOVA
 _____ SECTION 35
 _____ T 2

TYPE MONUMENT MON.BOX
 ON SURFACE - ~~BELOW~~ ON
 LEFT - ☉ PAV'T - RIGHT ON
21.4' TO LT CURB EDGE
 S.L.M. 574+08.09

Grid: Northing: 695895.081 Easting: 1644492.098



RECORD:
 FD MON.BOX
 8/24/94, CL

FD MON.BOX
 GPS, REF40
 8/7/13, DCH

TOP NW.BOLT
 "+", HYDRANT

REF42, MON.BOX
 N= 694721.061
 E= 1644690.916