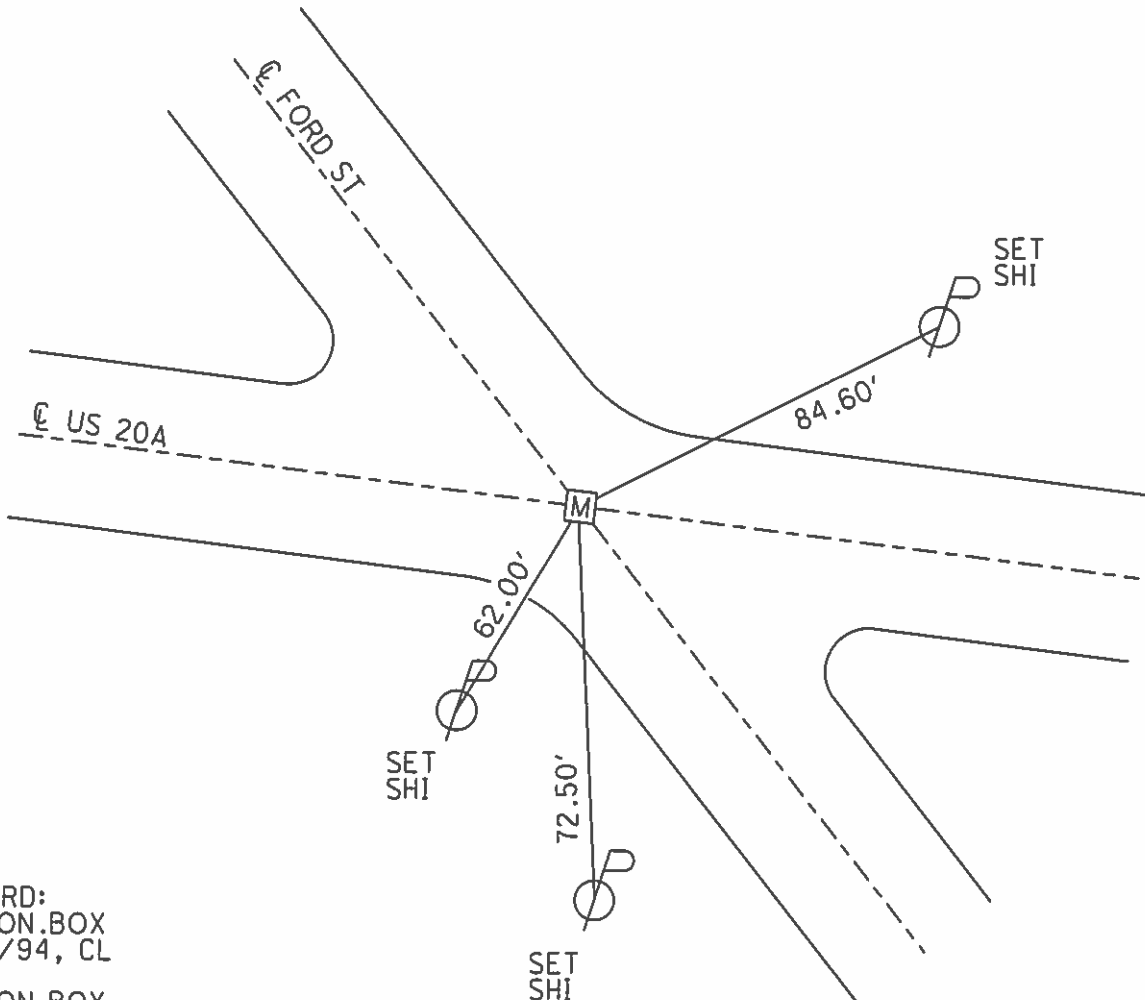
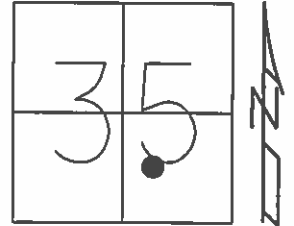


O.D.O.T. DISTRICT 2 SURVEY OFFICE (USE ONLY)

PERSONNEL _____ REFERENCE NO. 37 SHEET 42 OF 42
NOTES LOEHRKE DATE 8/24/94 ROUTE US 20A
H.C. CANTERBURY WEATHER NICE :) COUNTY LUCAS
R.C. HERMILLER TEMP. 70° TOWNSHIP MONCLOVA
SECTION 35
T 2

TYPE MONUMENT MON.BOX
ON SURFACE - ~~BELOW~~ ON
LEFT - ☉ PAV'T - RIGHT ON
- TO - EDGE PAVEMENT
S.L.M. 606+58.25
Grid: Northing: 695285.651 Easting: 1647684.604



RECORD:
FD MON.BOX
8/24/94, CL

FD MON.BOX
GPS, REF44
8/7/13, DCH