

STATE OF OHIO DEPARTMENT OF HIGHWAYS

LUC-223-(0.02-0.21) LUC-333-(2.16-2.97)

LUCAS COUNTY SYLVANIA TOWNSHIP AND VILLAGE OF SYLVANIA

FED. RD. DIVISION	STATE	PROJECT	TYPE FUNDS
2	OHIO	STATE	

LUC-223-(0.02-0.21)
 LUC-333-(2.16-2.97)

1
15

CONVENTIONAL SIGNS

CENTER LINE	-----
STATE LINE	-----
COUNTY LINE	-----
TOWNSHIP LINE	-----
SECTION LINE	-----
CORPORATION LINE	-----
PROPERTY LINE	-----
POLE LINE	Telephone ϕ ϕ Electric ϕ ϕ ϕ
FENCE LINE	x x x x x x x x x x x x
RAILROADS	=====
DRAIN PIPE	-----

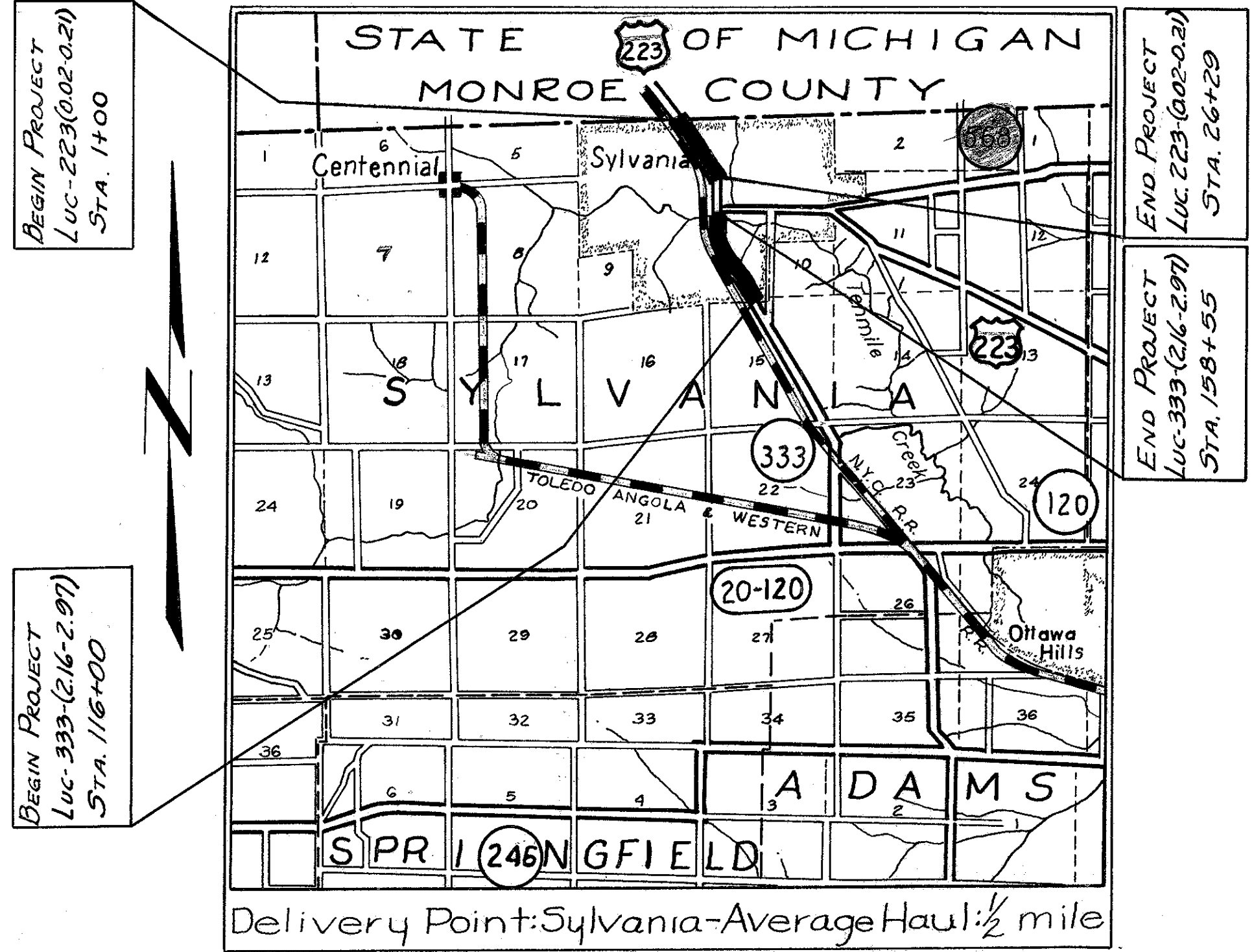
New ----- Old -----

INDEX OF SHEETS

TITLE SHEET	1
TYPICAL SECTIONS	2,3
GENERAL NOTES, PAVEMENT COMPUTATIONS, GENERAL SUMMARY	4
SUBSUMMARIES	5
PLAN AND PROFILE	6-12
CROSS SECTIONS	13-15
DRIVEWAY AND STEP DETAILS	6

LINE DATA

BEGIN WORK US 223	STA. 0+00
BEGIN PROJECT US 223	STA. 1+00
END PROJECT US 223	STA. 26+29
END WORK US 223	STA. 27+12
GROSS LENGTH OF PROJECT ON US 223 = NET LENGTH = 2529 LIN. FT. OR 0.478 MILES	
GROSS LENGTH OF WORK ON US 223 = NET LENGTH = 2712 LIN. FT. OR 0.513 MILES	
BEGIN WORK SR 333	STA. 113+57.7
BEGIN PROJECT SR 333	STA. 116+00
END PROJECT SR 333	STA. 158+55
END WORK SR 333	STA. 158+65
GROSS LENGTH OF PROJECT = 4255 LIN. FT. OR 0.805 MILES	
GROSS LENGTH OF WORK = 4507.3 LIN. FT. OR 0.853 MILES	
DEDUCT FOR BRIDGE - STA. 153+91.6 TO STA. 154+55.4 = 63.8 LIN. FT.	
NET LENGTH OF PROJECT = 4191.2 LIN. FT. OR 0.793 MILES	
NET LENGTH OF WORK = 4443.5 LIN. FT. OR 0.841 MILES	



LOCATION PLAN

Scale in miles

PORTION TO BE IMPROVED	=====
STATE HIGHWAYS	=====
COUNTY ROADS	=====
DETOUR	NONE

SCALES

PLAN	1" = 50'
PROFILE (Vert.)	1" = 5'
PROFILE (Horiz.)	1" = 50'
CROSS SECTIONS	1" = 5'

The Standard Specifications of the State of Ohio, Department of Highways, including changes and Supplemental Specifications listed in the proposal shall govern this improvement.

I hereby approve these plans and declare that the making of this improvement will not require the closing to traffic of the highway and that provisions for maintenance and safety of traffic will be as set forth in these plans and estimates.

The right of way for this improvement will be provided by The State of Ohio.

- Approved _____
Date April 2, 1956 Division Deputy Director.
- Approved _____
Date 4-19-56 Deputy Director of Planning and Programming.
- Approved _____
Date _____ Engineer of Bridges.
- Approved _____
Date 4-18-56 Engineer of Location and Design.
- Approved _____
Date 4-18-56 Deputy Director of Design and Construction.
- Approved _____
Date 4-20-56 First Assistant Director.
- Approved _____
Date 4-30-56 Director of Highways.

Print Approved _____
Date 4-11-56 Mayor of Sylvania

TOTAL NET LENGTH OF PROJECTS US 223 & SR 333	6720.2 LIN. FT. OR 1.272 MILES
TOTAL NET LENGTH OF WORK ON US 223 & SR 333	7155.5 LIN. FT. OR 1.355 MILES

STANDARD CONSTRUCTION DRAWINGS

7-35	1-2-56
DR-1	1-3-55
IX-1	1-3-55
I-12	7-1-54
L-3	4-1-50
L-3A	4-1-50
I-12, 3, 4 & 5	2-20-45
I-B.C.B. No 3-A	5-1-52
I-B.M.H. No 1	5-1-52
I-B.M.H. No 1-A	1-3-55

SUPPLEMENTAL SPECIFICATIONS

M-110.27	9-9-52
L-209.12	7-17-54

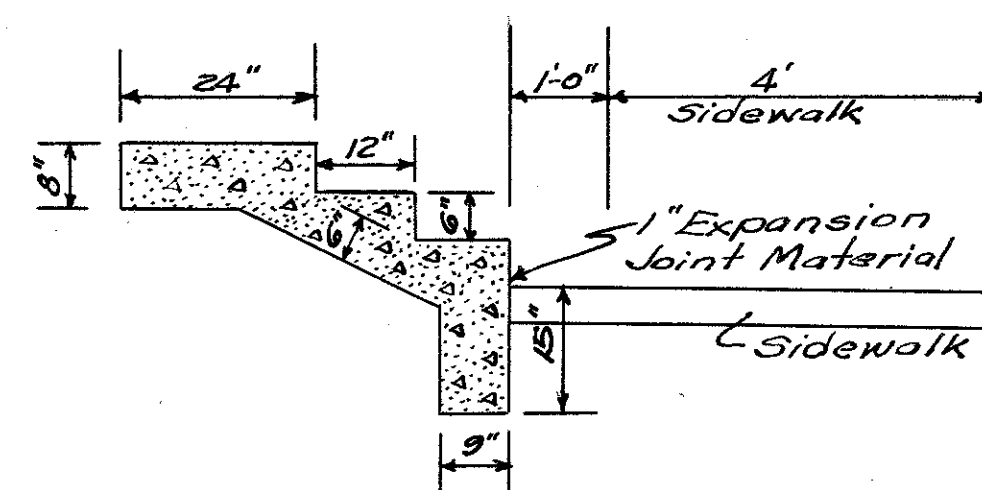
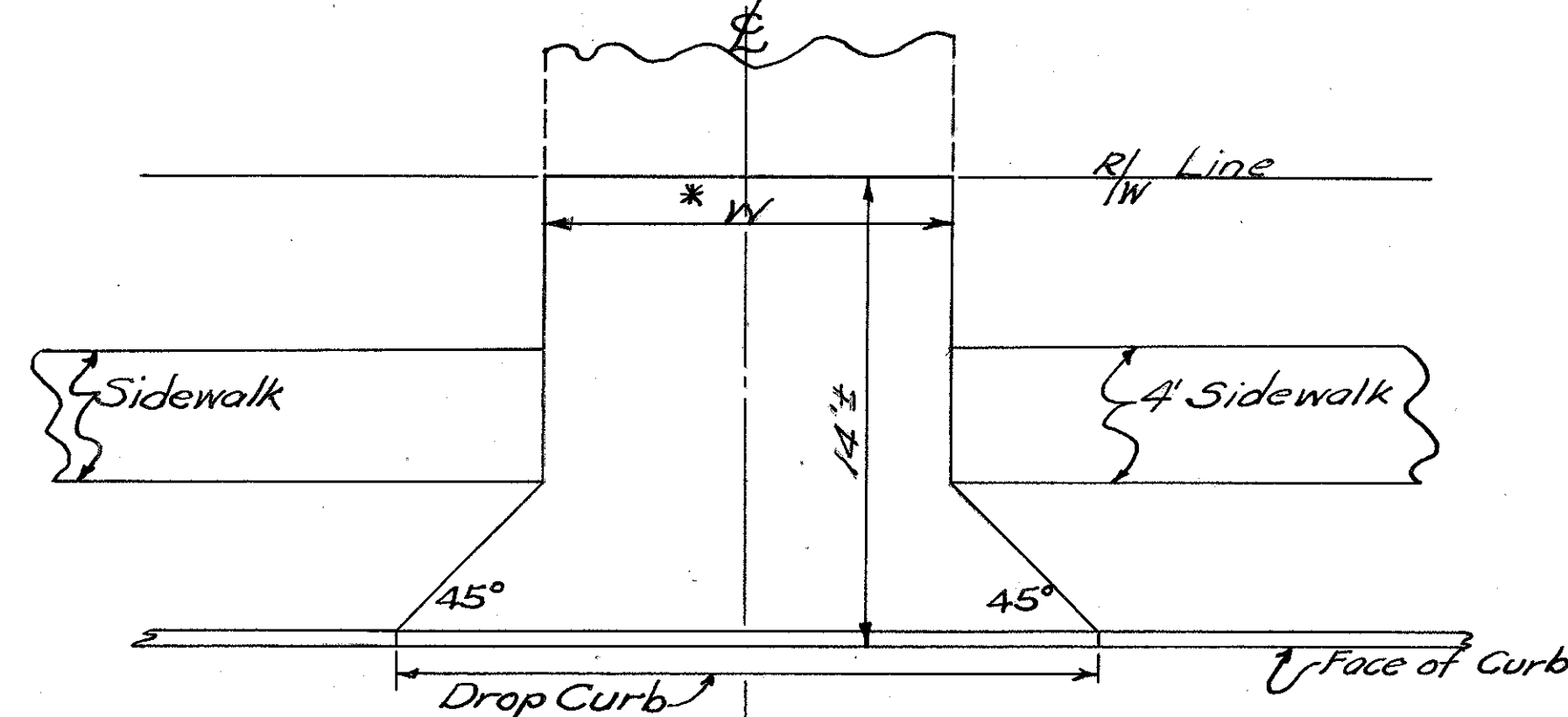
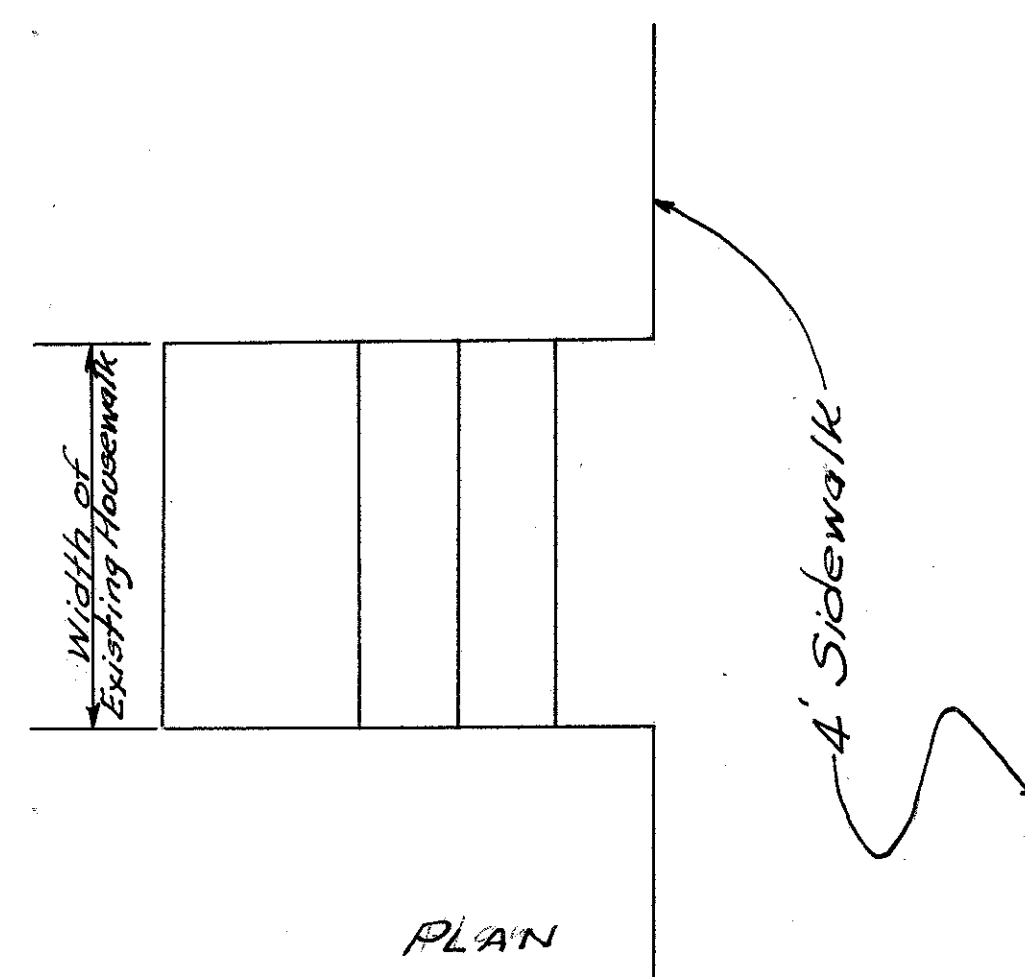
File No.	LUC-223-(0.02-0.21)
	LUC-333-(2.16-2.97)
Date of Letting	1956
Contract No.	

CONSTRUCTION BUREAU
APR 17 1956
GROUND PHOTOLAB

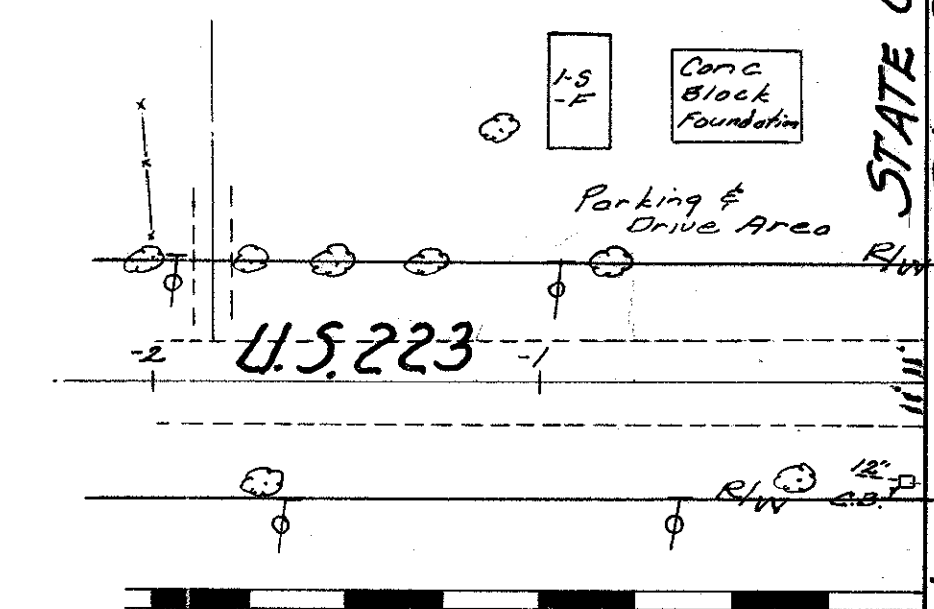
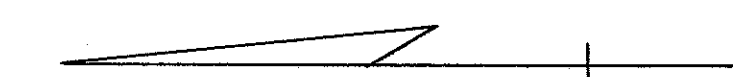
FCD. RD. DIVISION	STATE	PROJECT	TYPE
2	OHIO		GUIDE

6
15

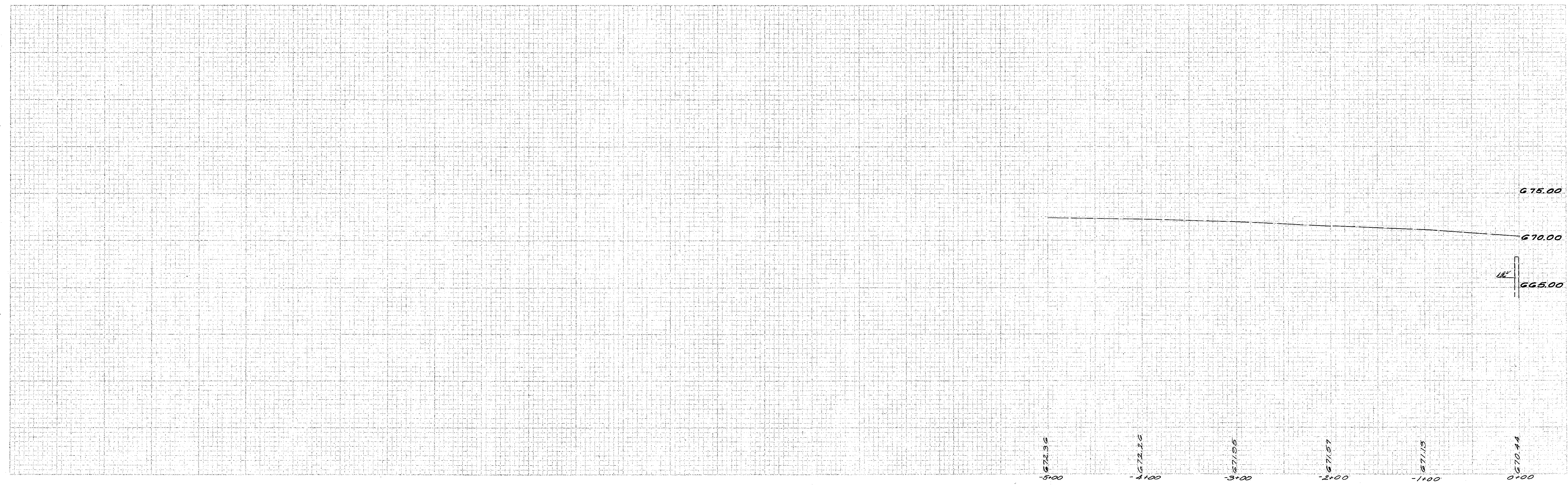
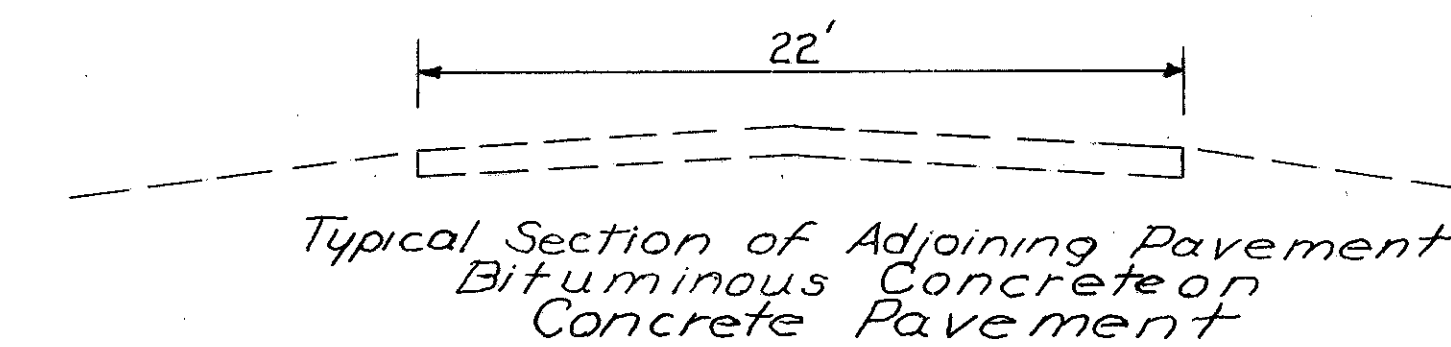
LUC-223-(0.02-0.21)
LUC-333-(2.16-2.97)

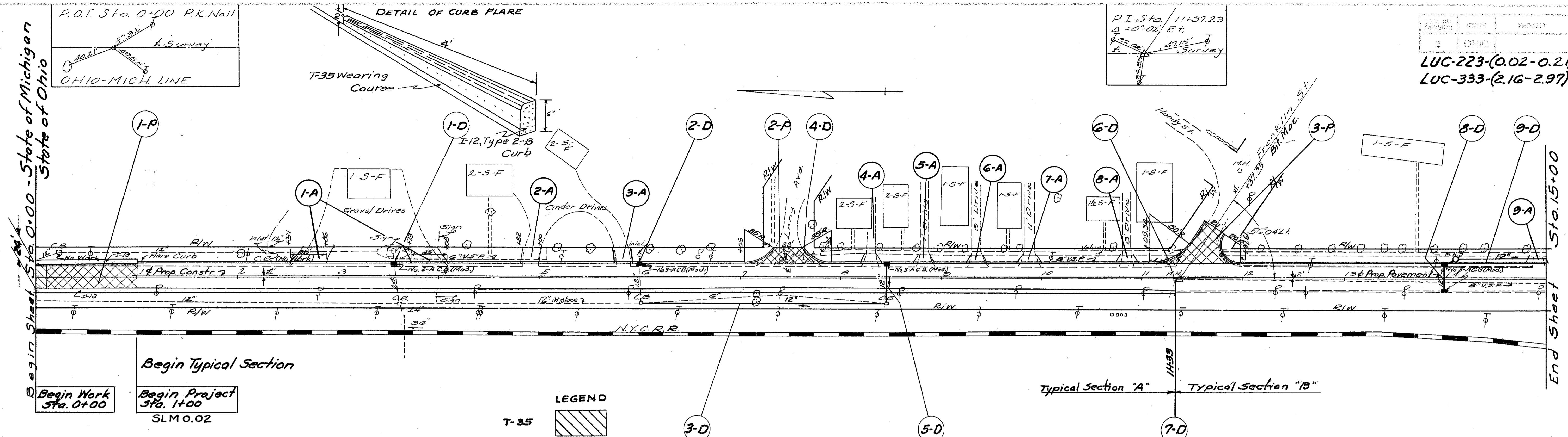


TYPICAL DETAIL OF CONCRETE STEPS
SCALE 1/2" = 1'-0"



STATE OF MICHIGAN
Sta. 0+00
STATE OF OHIO
End Sheet





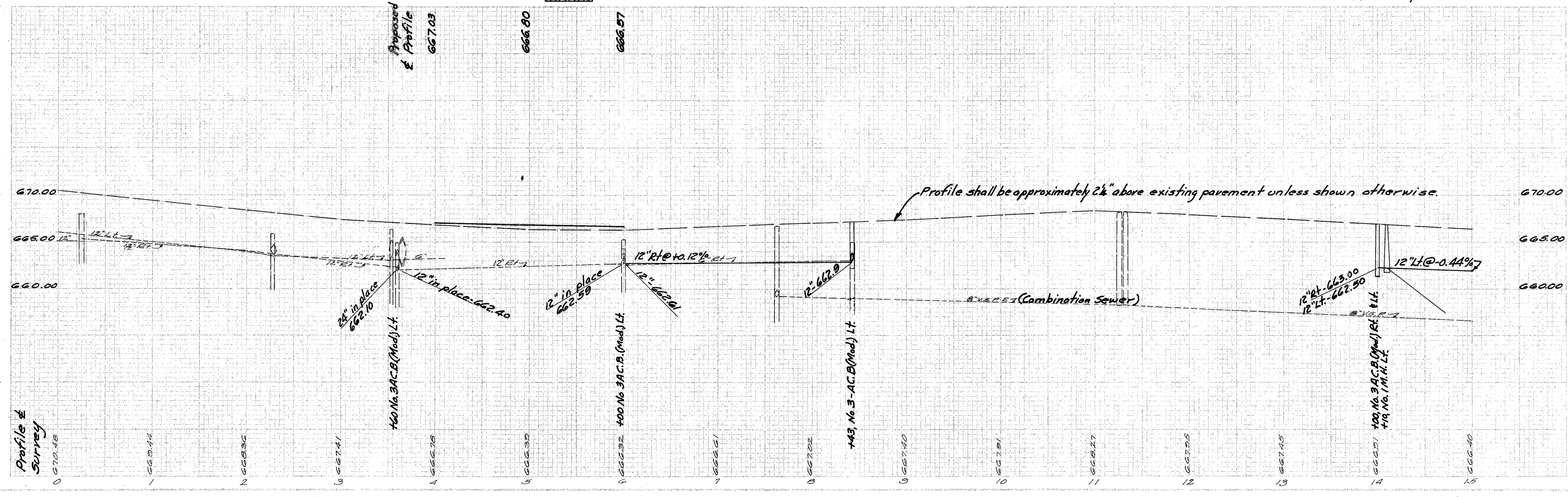
Begin Work Sta. 0+00
Begin Project Sta. 1+00
SLM 0.02

LEGEND

T-35	
T-35 & B-35	
T-35, B-35, B-70, I-22	

Note: Center line of proposed construction is 2'-0" left and parallel to center line of Survey.
B.M. Nail in T.P. 35.5' Rt. Sta. 2+38, Elev. 666.86

B.M. West Bolt head on Fire plug 21' Left of Sta. 15+22, Elev. 667.89



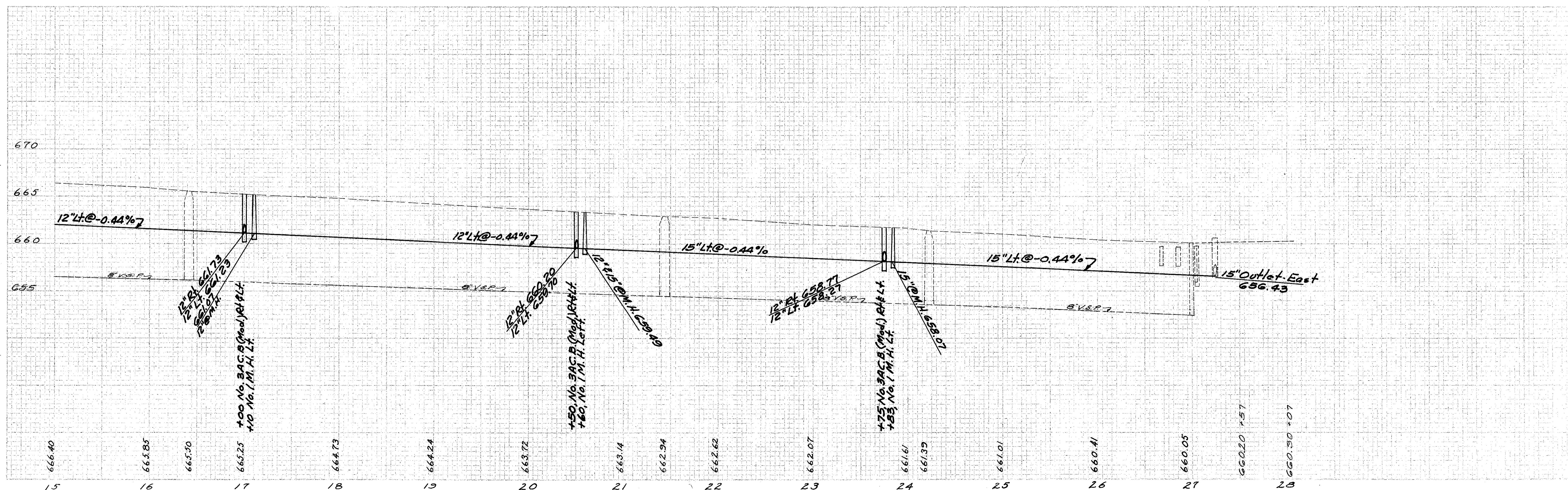
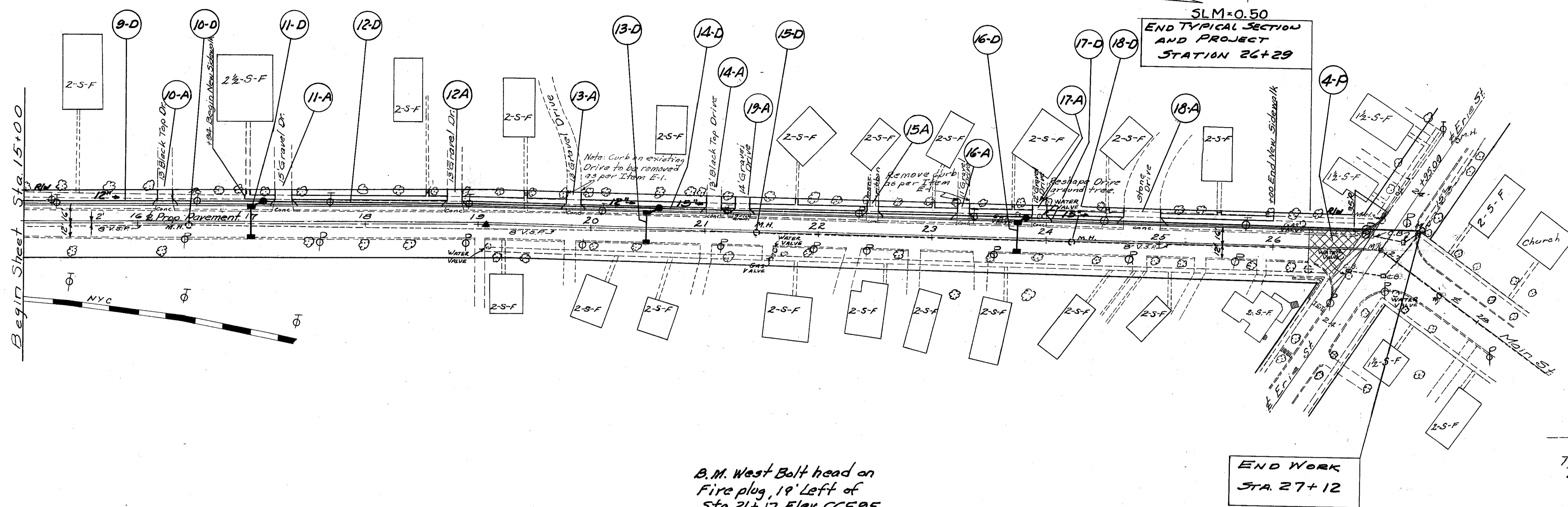
Sta. 0+00 To Sta. 15+00

P.I. = Sta. 19+06.25
 ▲ = 1°19' R.
 R.K. Nail

Nick In M.H. Cover
 Sta. 26+95.09
 Survey

FED. RD. DIVISION	STATE	PROJECT	TYPE
2	OHIO		BRIDGE

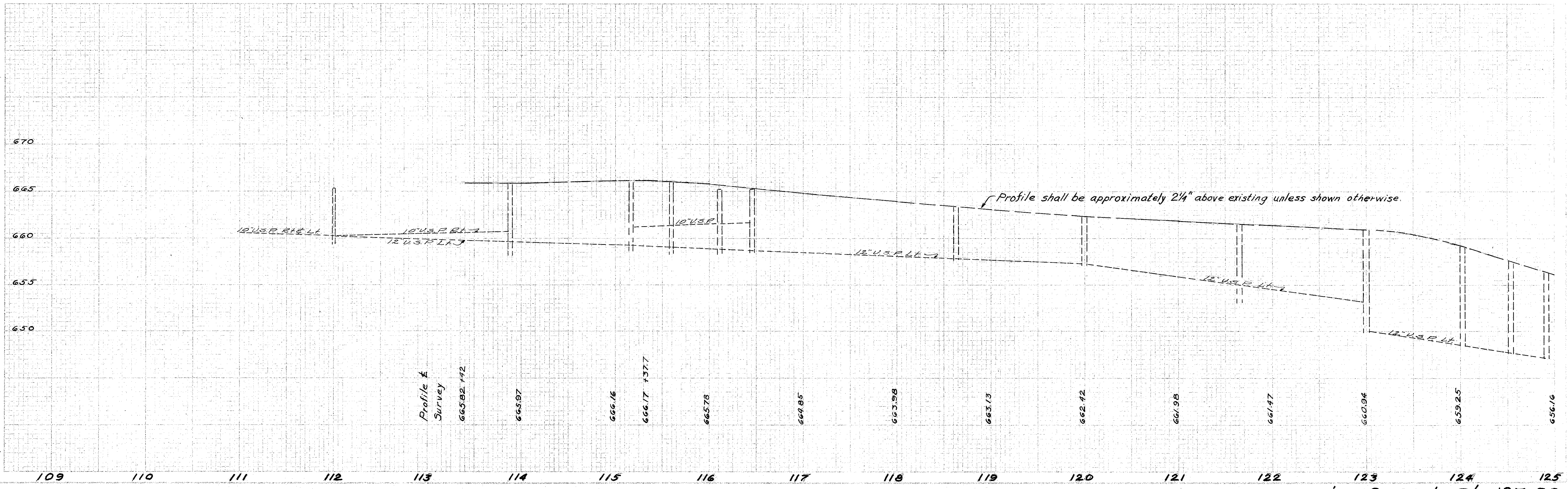
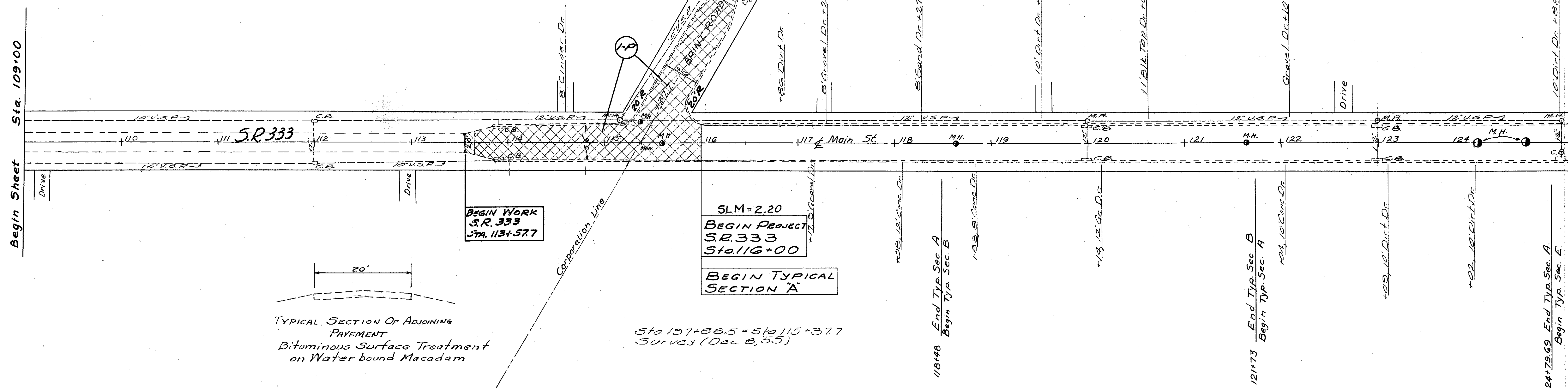
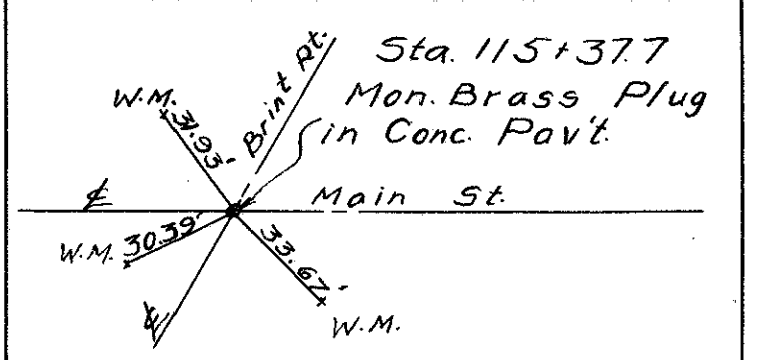
LUC-223-(0.02-0.21)
 LUC-333-(2.16-2.97)



Sta. 15+00 To Sta. 28+07

MAKE FIELD CHECK
BEFORE INKING

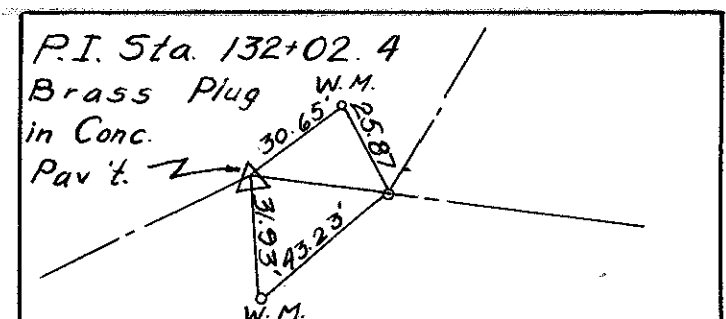
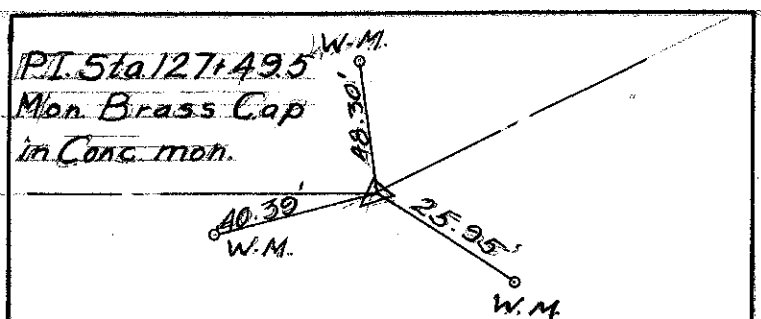
LUC-223-(0.02-0.21)
LUC-333-(2.16-2.97)



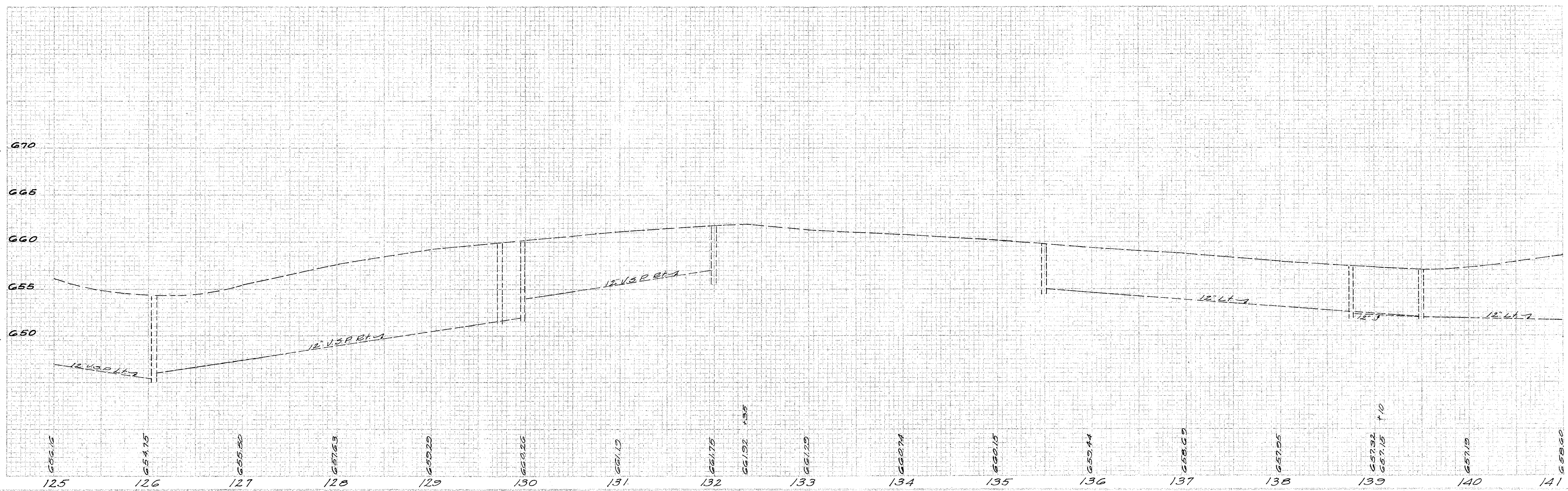
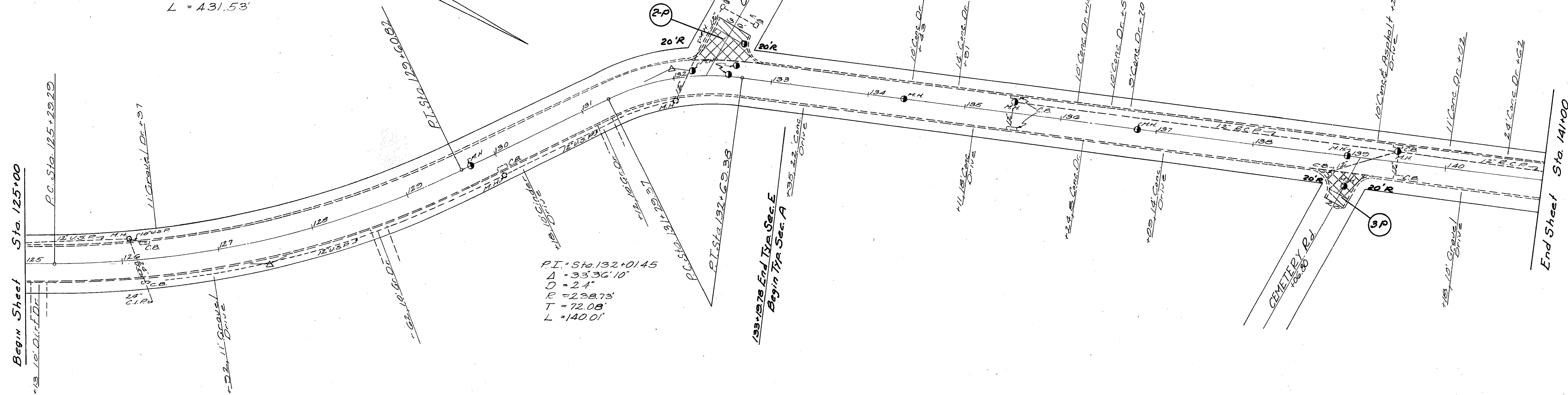
Sta. 109+00 to Sta. 125+00

LUC-223-(0.02-0.21)
LUC-333-(2.16-2.97)

P.I. STA. 127+48.8
 $\Delta = 25^\circ 53' 30''$
 $D = 6''$
 $R = 954.93'$
 $T = 219.51'$
 $L = 431.53'$



P.I. Sta. 132+01.45
 $\Delta = 33^\circ 36' 10''$
 $D = 2.4''$
 $R = 298.73'$
 $T = 72.08'$
 $L = 140.01'$

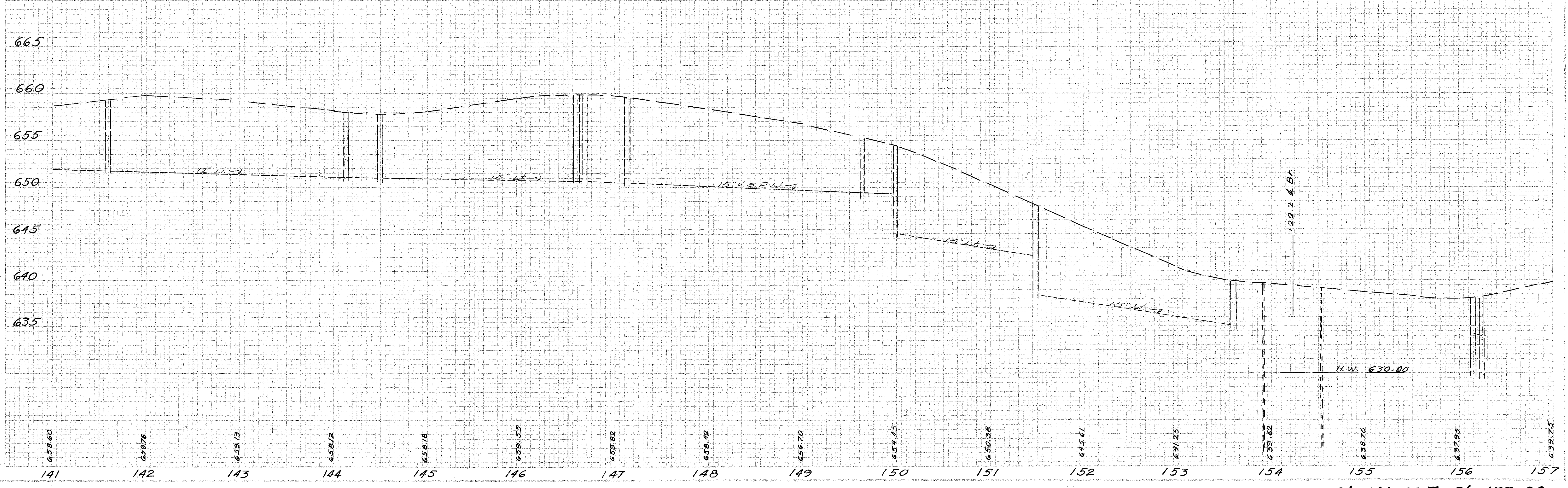
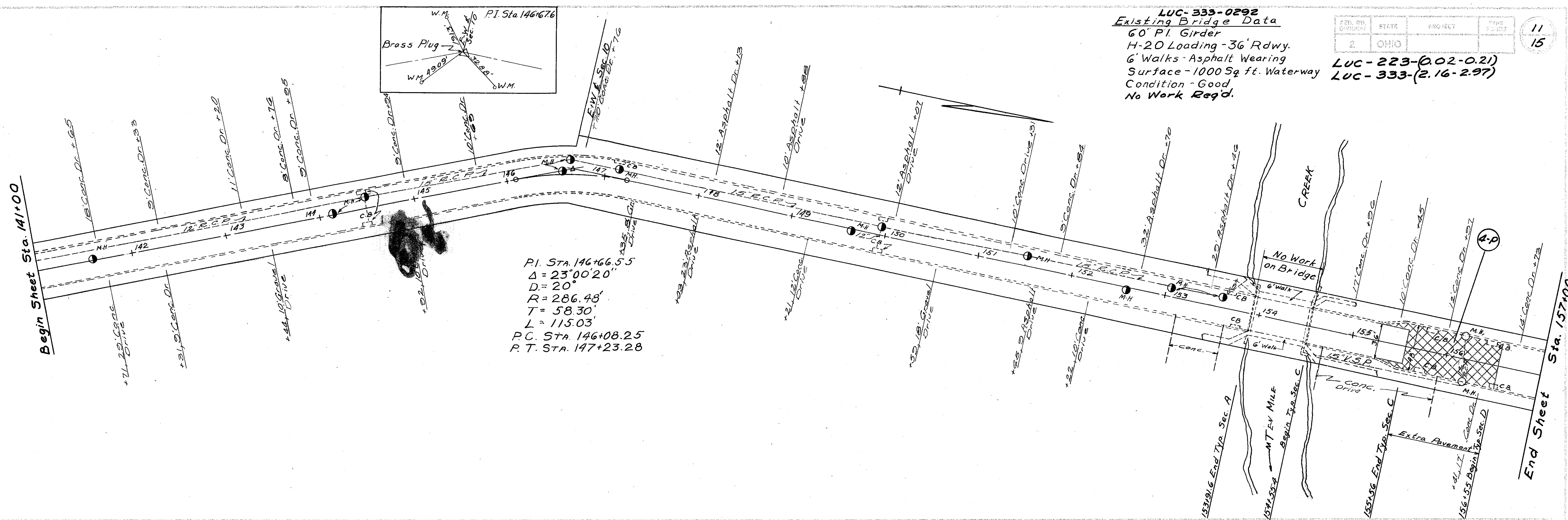
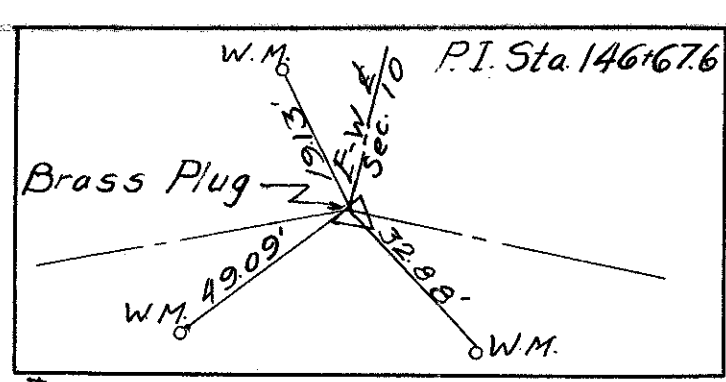


Sta. 125+00 to Sta. 141+00

LUC-333-0292
Existing Bridge Data
 60' P.I. Girder
 H-20 Loading - 36' Rdwy.
 6' Walks - Asphalt Wearing
 Surface - 1000 Sq. ft. Waterway
 Condition - Good
 No Work Req'd.

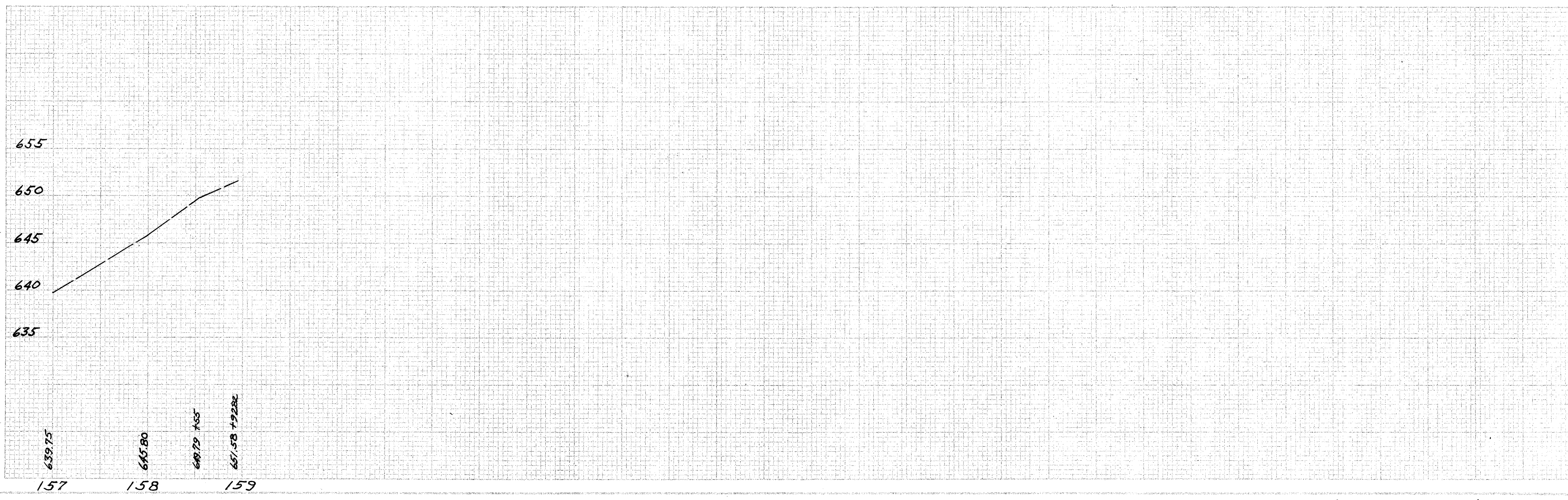
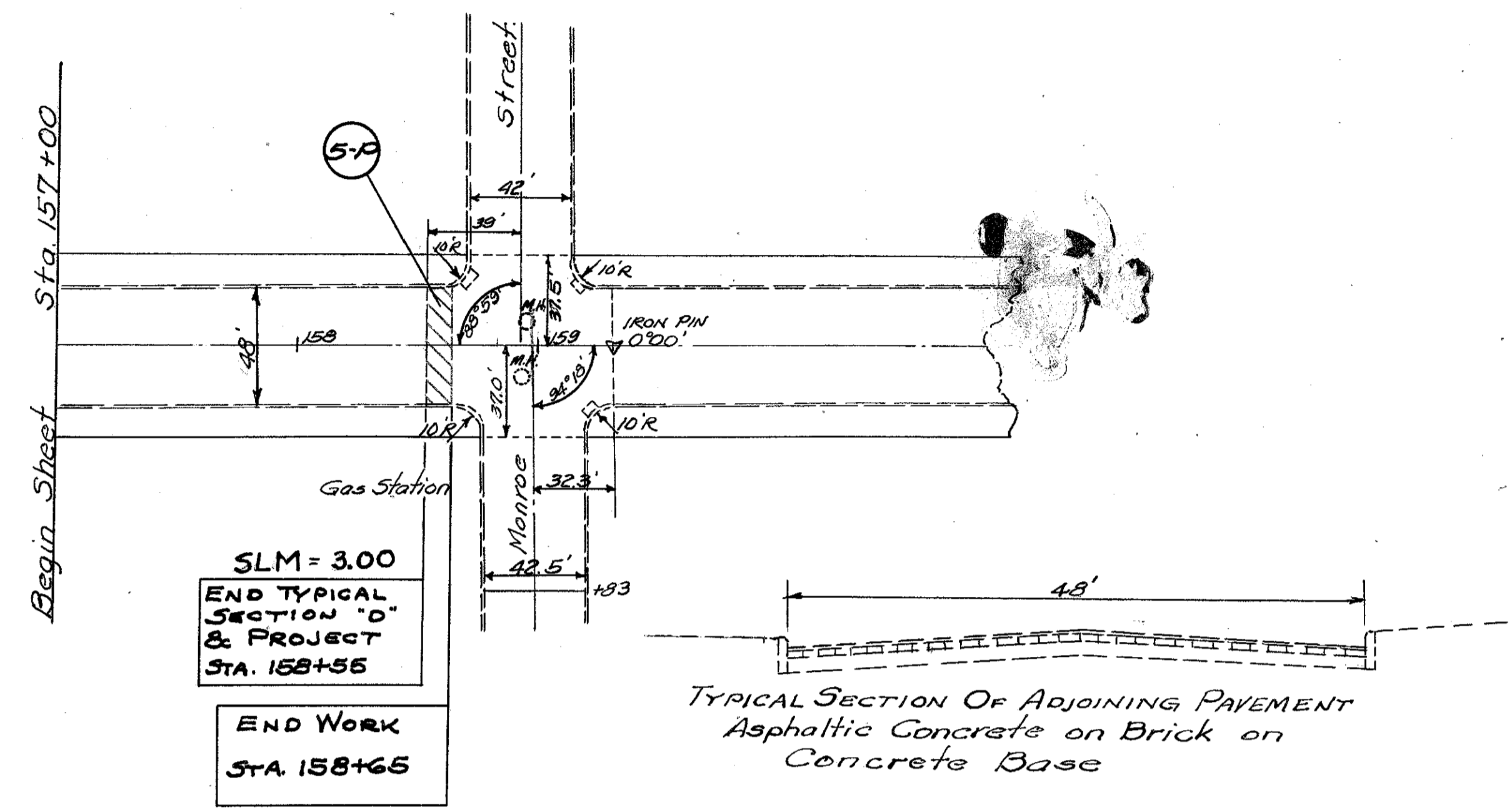
FED. RD. DISTRICT	STATE	PROJECT	TYPE	SHEET NO.
2	OHIO			11

LUC-223-(0.02-0.21)
 LUC-333-(2.16-2.97)



Sta. 141+00 To Sta. 157+00

LUC-223-(0.02-0.21)
LUC-333-(2.16-2.97)



Sta. 157+00 To Sta. 159+00