

County Locust S.R. 05#223

Date 10 May 1929

Township Sylvania

Weather Warm

Section 0.00

Temp. 75°

T_N, R_E

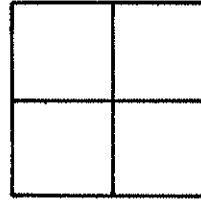
Personnel I. Stone

R. Michalak

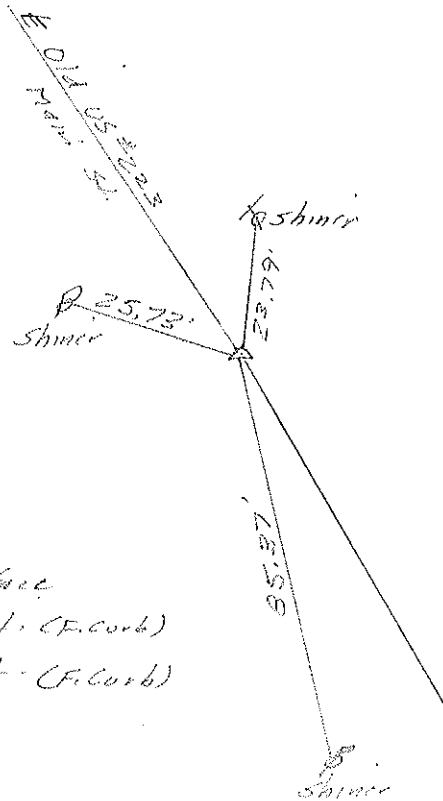
P. Newson

D. Curtis

D. Granite



Ref. No. 4



Fd. RR Spt. to Surface
 15.5' to E. edge put. (F. Corb)
 12.5' to W. edge put. (F. Corb)