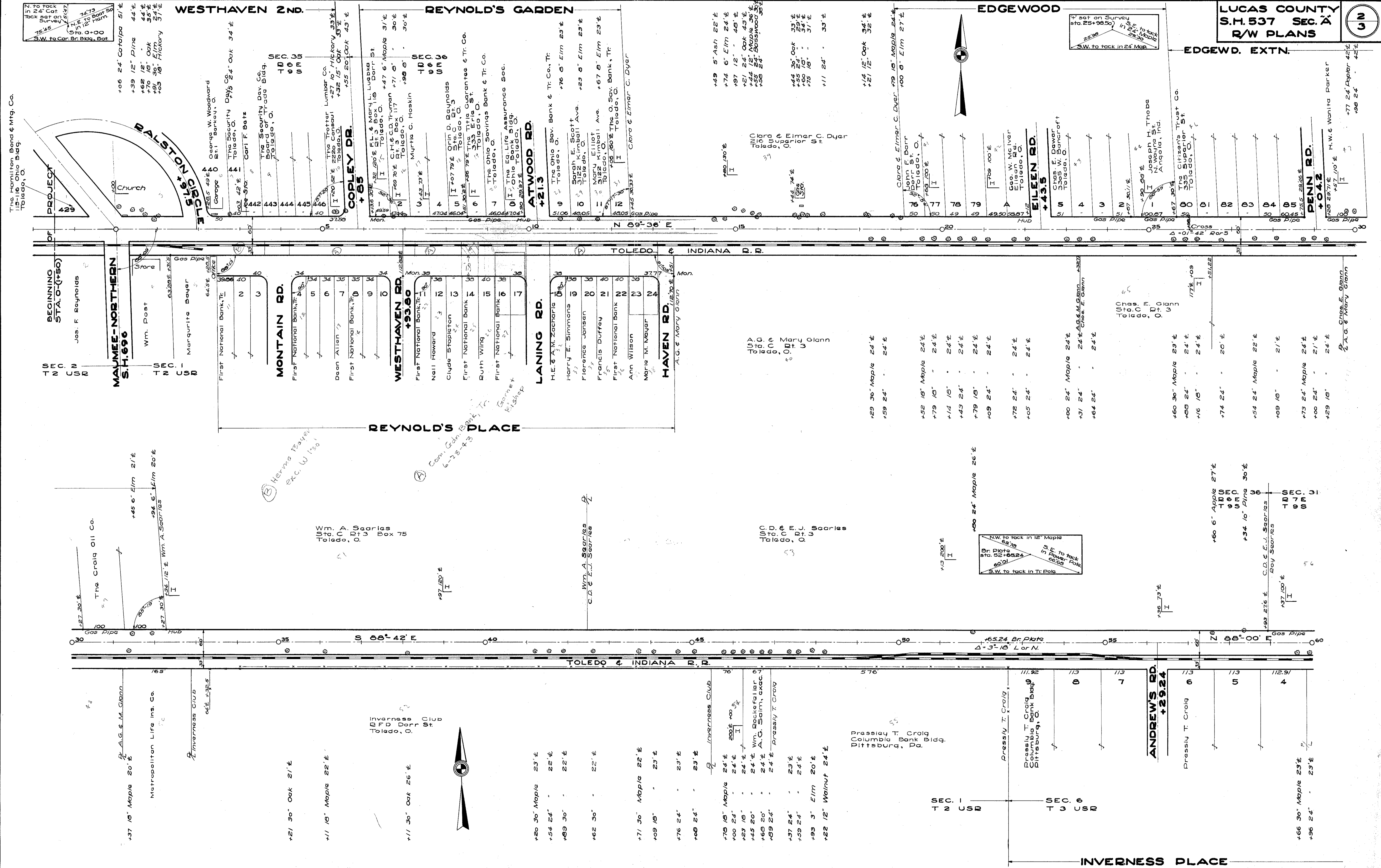


STATE OF OHIO
 DEPARTMENT OF HIGHWAYS
 RIGHT-OF-WAY PLANS
 TOLEDO-WESTERN ROAD
 S.H. 537 SEC. 2
 LUCAS COUNTY
 ADAMS TOWNSHIP
 1934
 SR-246

Scanned
July 1987

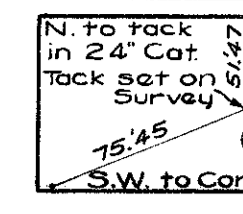
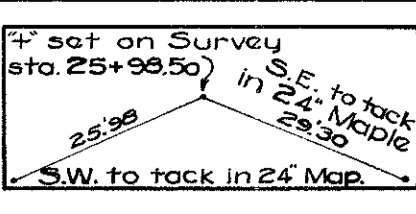
R-3246 4 C-32

FOR ANY QUESTIONS PLEASE CONTACT ODOT DISTRICT 2 REAL ESTATE AT 419-353-8131



LUCAS COUNTY
S.H. 537 SEC. A
R/W PLANS

2
3



The Hamilton Bond & Mtg. Co.
15-116 Ohio Bldg.
Toledo, O.

PROJECT
429

BEGINNING
STA. 0+150

Jos. F. Reynolds

MAJUMEE-NORTHERN
S.H. 696

Wm. Post

Margurite Bayer

First National Bank, Tr.

First National Bank, Tr.

First National Bank, Tr.

First National Bank, Tr.

First National Bank, Tr.

First National Bank, Tr.

First National Bank, Tr.

First National Bank, Tr.

First National Bank, Tr.

First National Bank, Tr.

First National Bank, Tr.

First National Bank, Tr.

First National Bank, Tr.

First National Bank, Tr.

First National Bank, Tr.

First National Bank, Tr.

First National Bank, Tr.

First National Bank, Tr.

First National Bank, Tr.

First National Bank, Tr.

First National Bank, Tr.

First National Bank, Tr.

First National Bank, Tr.

First National Bank, Tr.

First National Bank, Tr.

First National Bank, Tr.

First National Bank, Tr.

First National Bank, Tr.

First National Bank, Tr.

First National Bank, Tr.

First National Bank, Tr.

First National Bank, Tr.

First National Bank, Tr.

First National Bank, Tr.

First National Bank, Tr.

First National Bank, Tr.

First National Bank, Tr.

First National Bank, Tr.

First National Bank, Tr.

First National Bank, Tr.

First National Bank, Tr.

First National Bank, Tr.

First National Bank, Tr.

First National Bank, Tr.

First National Bank, Tr.

First National Bank, Tr.

First National Bank, Tr.

First National Bank, Tr.

First National Bank, Tr.

First National Bank, Tr.

First National Bank, Tr.

First National Bank, Tr.

First National Bank, Tr.

First National Bank, Tr.

First National Bank, Tr.

First National Bank, Tr.

First National Bank, Tr.

First National Bank, Tr.

First National Bank, Tr.

First National Bank, Tr.

First National Bank, Tr.

First National Bank, Tr.

First National Bank, Tr.

First National Bank, Tr.

First National Bank, Tr.

First National Bank, Tr.

First National Bank, Tr.

First National Bank, Tr.

First National Bank, Tr.

First National Bank, Tr.

First National Bank, Tr.

First National Bank, Tr.

First National Bank, Tr.

First National Bank, Tr.

First National Bank, Tr.

First National Bank, Tr.

First National Bank, Tr.

First National Bank, Tr.

First National Bank, Tr.

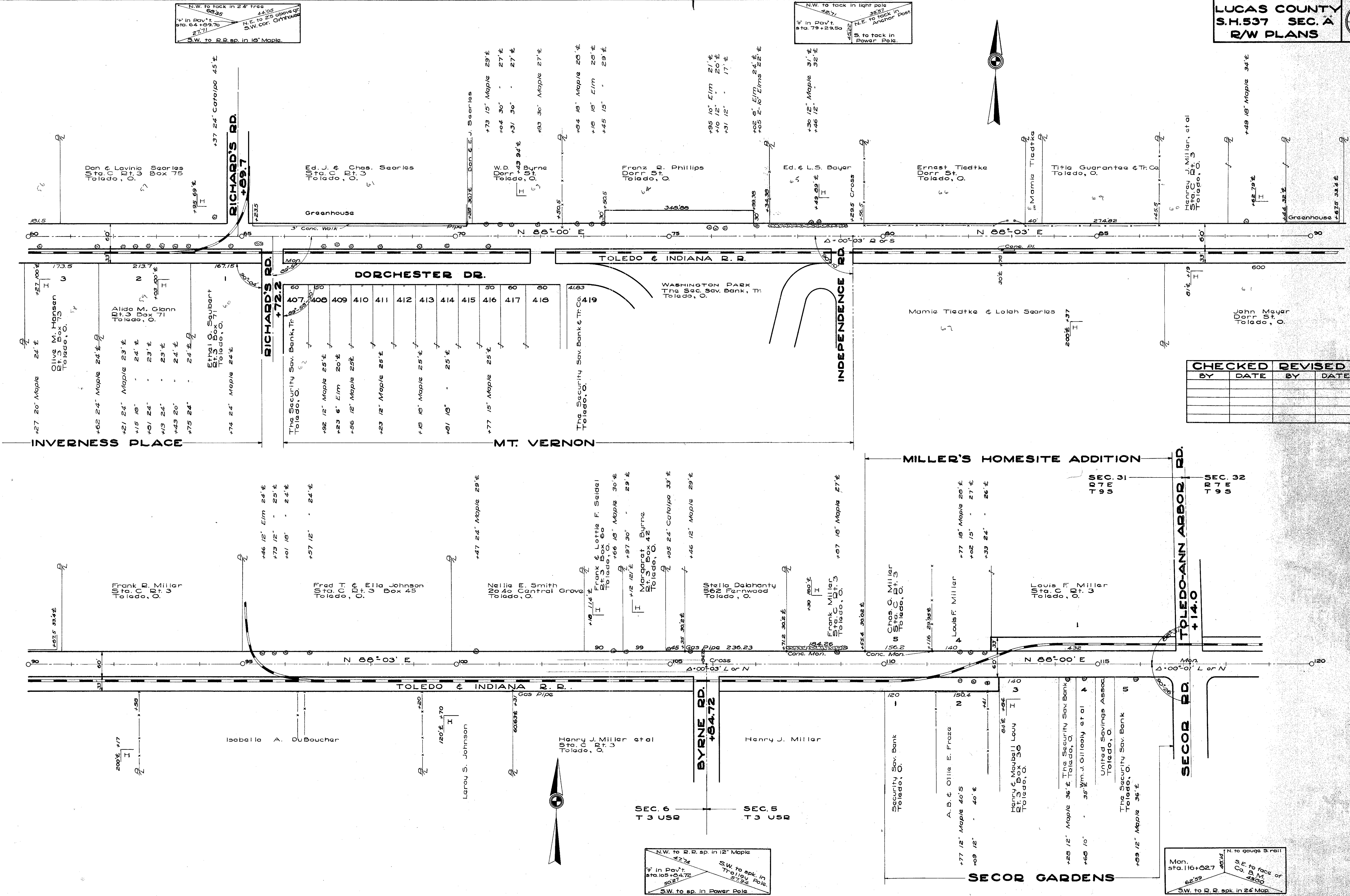
First National Bank, Tr.

First National Bank, Tr.

First National Bank, Tr.

First National Bank, Tr.

FOR ANY QUESTIONS PLEASE CONTACT ODOT DISTRICT 2 REAL ESTATE AT 419-353-8131



| CHECKED | | REVISED | |
|---------|------|---------|------|
| BY | DATE | BY | DATE |
| | | | |
| | | | |
| | | | |

N.W. to R.R. sp. in 12" Maple
 27.74
 4 in Pav't. sta. 105+04.72
 50.21
 S.W. to sp. in Power Pole

N. to gauge 3. rail
 25.21
 S.E. to face of
 Co. B.M.
 48.00
 62.59
 S.W. to R.R. spk. in 24 Map.

SEC. 6
T 3 CSR

SEC. 5
T 3 CSR

