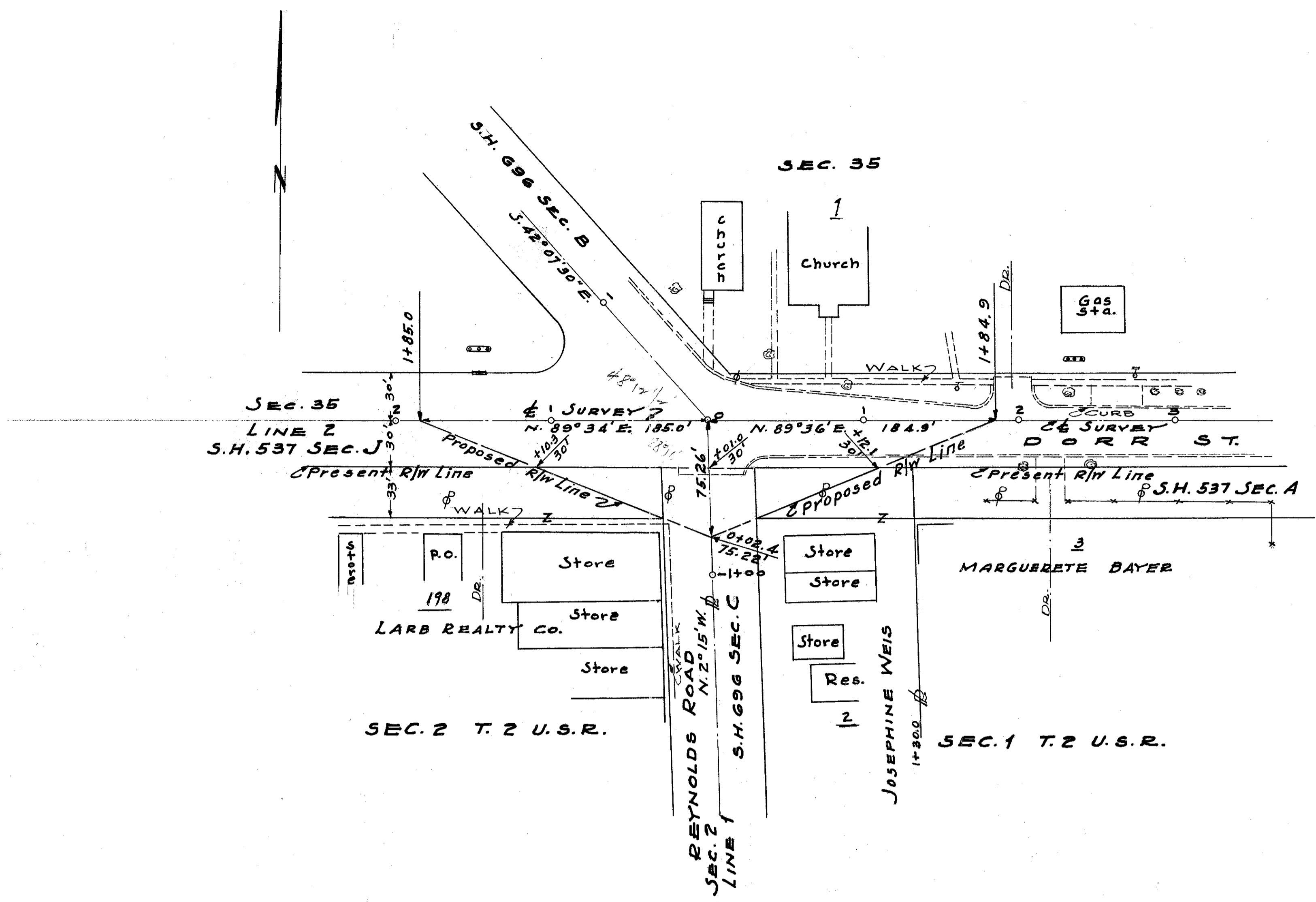
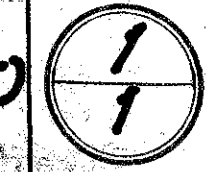


ADAMS TWP T. 9 S. R. 6 E.

LUCAS COUNTY
S.H. 537 SEC. J (PT.) & A (PT.)
R/W PLANS

DATE: 11-21-44 DRAWN BY J.S.
 REVISED: 4/12/46
 LENGTH OF PROJECT



See plan for details

R-3246 # 2 C-54

S.H. 537 SEC. J (PT.) & A (PT.) R/W PLANS

C-24