

STATE OF OHIO
 DEPARTMENT OF TRANSPORTATION
LUC-246-2.19 (DORR STREET)
 SECOR RD. TO DOUGLAS RD.
 CITY OF TOLEDO
 LUCAS COUNTY

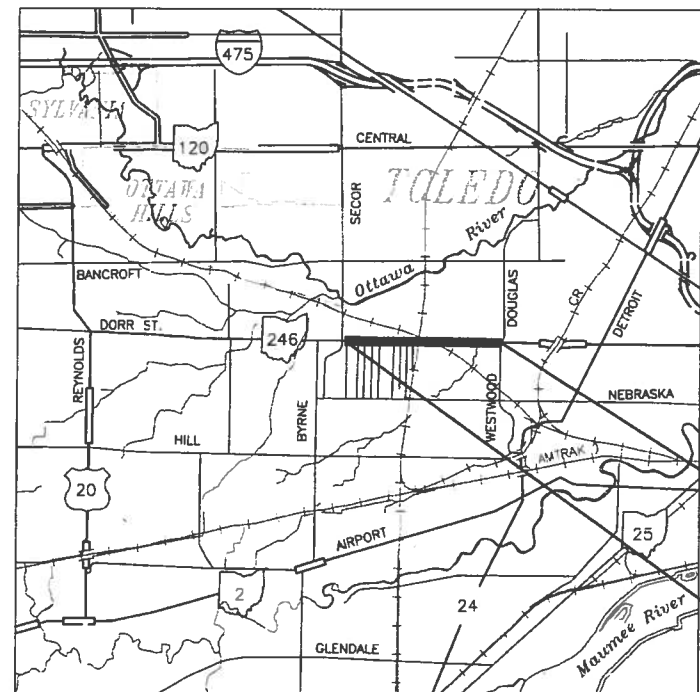
PROJECT DESCRIPTION

UPGRADING 0.73 MILES OF DORR STREET BY WIDENING AND RESURFACING, INCLUDING, NEW STORM SEWER SYSTEM, CURB AND GUTTER, SIDEWALK, PERTINENT TRAFFIC CONTROL ITEMS, AND A NEW 12" WATERLINE.

1997 SPECIFICATIONS

THE STANDARD SPECIFICATIONS OF THE STATE OF OHIO, DEPARTMENT OF TRANSPORTATION, INCLUDING CHANGES AND SUPPLEMENTAL SPECIFICATIONS LISTED IN THE PROPOSAL SHALL GOVERN THIS IMPROVEMENT.

I HEREBY APPROVE THESE PLANS AND DECLARE THAT THE MAKING OF THIS IMPROVEMENT WILL NOT REQUIRE THE CLOSING TO TRAFFIC OF THE HIGHWAY AND THAT PROVISIONS FOR THE MAINTENANCE AND SAFETY OF TRAFFIC WILL BE AS SET FORTH ON THE PLANS AND ESTIMATES.



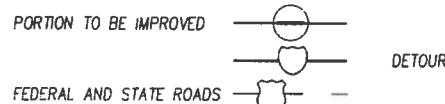
LOCATION MAP

END PROJECT
STA. 157+00

BEGIN PROJECT
STA. 118+40

INDEX OF SHEETS

TITLE SHEET	1
SCHEMATIC PLAN	2
TYPICAL SECTIONS	3-7
GENERAL NOTES	8-9
MAINTENANCE OF TRAFFIC	10-12
GENERAL SUMMARY	13-15
SUB-SUMMARIES AND CALCULATIONS	16-20
PLAN/PROFILE	
DORR STREET	21-30
DOUGLAS ROAD	31
CROSS SECTIONS	
DORR STREET	32-56
DOUGLAS ROAD	57-58
INTERSECTION DETAILS	59-61
MISCELLANEOUS DETAILS	62-63
WATER WORK	64-76
PAVEMENT MARKING AND SIGNING	77-87
RIGHT OF WAY	88-101



DESIGN DESIGNATION

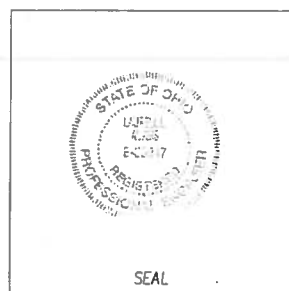
SEE SCHEMATIC PLAN

DESIGN EXCEPTIONS

NONE



PLAN PREPARED BY
DANSARD-GROHNKE-LONG, Limited
 110 Arco Drive Toledo, Ohio 43607
 (419) 535-1015



Laurell L. Adams
12/29/00

UNDERGROUND UTILITIES
 TWO WORKING DAYS
BEFORE YOU DIG
 Call 800-362-2764 (Toll free)
 OHIO UTILITIES PROTECTION SERVICE
 NON-MEMBERS
 MUST BE CALLED DIRECTLY

STANDARD CONSTRUCTION DRAWINGS						SUPPLEMENTAL SPECIFICATIONS			
BP-3.1	7-28-00	DM-1.1M	10-21-97	TC-41.20M	7-1-94	806	9-9-97	905	4-1-98
BP-4.1	7-28-00	DM-1.2M	10-21-97	TC-41.40M	3-31-94	830	10-21-98	906	5-5-98
RM-1.1	4-29-99	DM-4.3	4-29-99	TC-41.41M	3-31-94	870	8-10-99	907	10-21-98
RM-4.2M	10-21-97	DM-4.4	4-29-99	TC-41.50M	7-1-94	877	4-13-99	908	3-28-00
CB-2.1M	7-12-95			TC-42.20M	3-31-94	899	10-21-98		
CB-2.2M	7-12-95	MT-35.10M	1-30-95	TC-52.10M	7-29-94	814	6-2-95		
MH-1.2M	9-6-95	MT-35.11M	1-30-95	TC-52.20M	7-29-94	842	1-6-99		
		MT-95.31M	4-25-94	TC-71.10M	9-1-93	865	10-12-99		
				TC-81.10	5-1-00				
		MT-105.10M	4-25-94	TC-82.10	1-19-99				
		MT-105.11M	4-25-94	TC-82.11	1-19-99				
		MT-95.32M	4-25-94						

PLAN SIGNATURES

OHIO DEPARTMENT OF TRANSPORTATION
 APPROVED P. L. S. White
 DATE 1-24-01 DISTRICT DEPUTY DIRECTOR

APPROVED Brandon Proctor, Jr.
 DATE 3-26-01 DIRECTOR, DEPARTMENT OF TRANSPORTATION

CITY OF TOLEDO
 APPROVED David W. Wolch
 DATE 1/21 DIRECTOR, DEPARTMENT OF PUBLIC UTILITIES

APPROVED David W. Wolch
 DATE 1/21 COMMISSIONER, DIV. OF ENGINEERING SERVICES

APPROVED Hussein Abounaaj
 DATE 12/27/00 SENIOR TRANSPORTATION ENGINEER,
 DIVISION OF ENGINEERING SERVICES

LUC - SR 246 - 2.19 (Dorr Street)
 020034 PID - 12778
 Dist 2 1/9/2002

9924\RDWAY\12778G\ADWG

FEDERAL PROJECT NO.
TE21 C990 (640)

FD NO.
12778

CONSTRUCTION PROJECT NO.

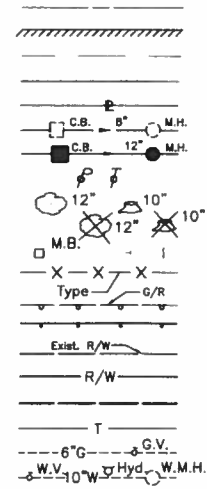
RAILROAD INVOLVEMENT
NORFOLK-SOUTHERN

LUC-246-2.19 (DORR STREET)

LUC-246-2.19 (DORR STREET)
 FRAC. SECTION 32 T.9S. R.7E.
 & SECTION 5 T.3 U.S.R.
 CITY OF TOLEDO
 LUCAS COUNTY

CONVENTIONAL SIGNS

- County Line
- Corporation Line
- Township Line
- Section Line
- Property Line
- Existing Storm Sewer w/Catch Basin & Manhole
- Proposed Storm Sewer w/Catch Basin & Manhole
- Poles: Power, Telephone
- Tree-Stump
- Tree-Stump To Be Removed
- Existing Mail Box & Signs
- Existing Fence
- Existing Guardrail
- Proposed Guardrail
- Existing Right-of-Way
- Proposed Right-of-Way
- Temporary Right-of-Way
- Underground Telephone Cable
- Exist. Gas Line w/Gas Valve
- Exist. Water Line w/Water Valve, Fire Hydrant & Water Manhole

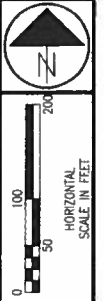
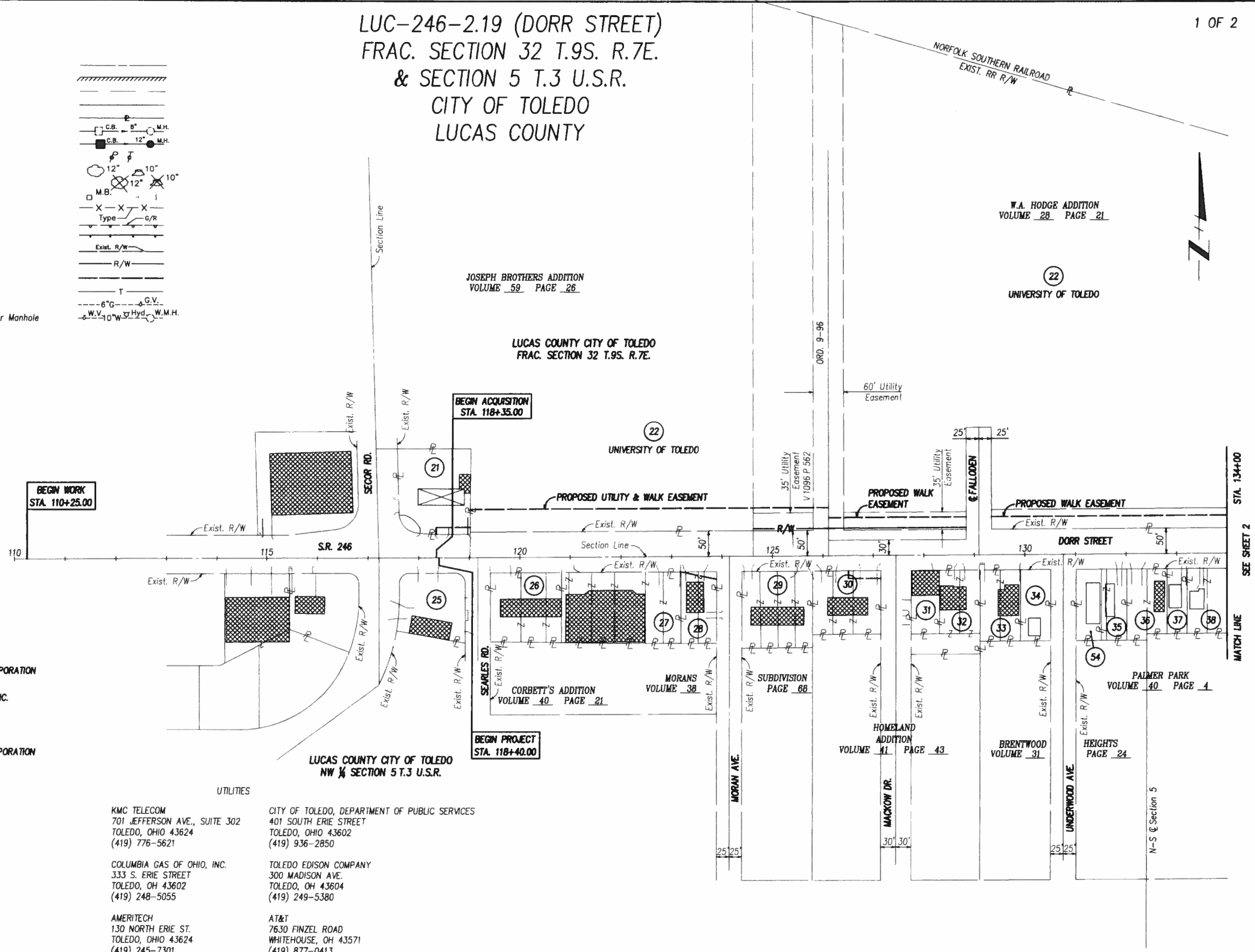


STRUCTURES KEY:

- - RESIDENTIAL BUILDING
- ▨ - COMMERCIAL BUILDING

- 21 BP EXPLORATION AND OIL, INC.
- 25 JABBAR YOUSIF & SAAD ROUMAYA
- 26 ROSE M. BARONE, TRUSTEE
- 27 DORR SECOR MEDICAL MALL, INC., AN OHIO CORPORATION
- 28 FIRST ANTIOCH BAPTIST CHURCH (OF CHRIST), INC.
- 29 FLOYD KING & NORMA JEAN KING
- 30 AUTO PLUS MUFFLER SHOPS, INC. AN OHIO CORPORATION
- 31 DALE FRANTZ
- 32 YOUSSEFF S. SAADEH
- 33 MACK FISHER
- 34 NANCY C. FREER, TRUSTEE
- 54 NANCY C. FREER, TRUSTEE
- 35 BRADLEY D. TIMMING
- 36 JOHN C. BAKER & PAMELA A. BAKER
- 37 BRADLEY D. TIMMING
- 38 MARY STANISH

- UTILITIES
- KMC TELECOM
701 JEFFERSON AVE., SUITE 302
TOLEDO, OHIO 43624
(419) 776-5621
 - COLUMBIA GAS OF OHIO, INC.
333 S. ERIE STREET
TOLEDO, OH 43602
(419) 248-5055
 - AMERITECH
130 NORTH ERIE ST.
TOLEDO, OHIO 43624
(419) 245-7301
 - BUCKEYE CABLESYSTEMS, INC.
4818 ANGOLA RD.
TOLEDO, OHIO 43615
(419) 724-9820
 - CITY OF TOLEDO, DEPARTMENT OF PUBLIC SERVICES
401 SOUTH ERIE STREET
TOLEDO, OHIO 43602
(419) 936-2850
 - TOLEDO EDISON COMPANY
300 MADISON AVE.
TOLEDO, OH 43604
(419) 249-5380
 - AT&T
7630 FINZEL ROAD
WHITEHOUSE, OH 43571
(419) 877-0413



P.L.D. NO. 12778
 R/W DESIGNER LLA
 R/W REVIEWER KED

PROPERTY MAP

LUC-246-2.19 (DORR STREET)

1/14

88
101

REV.	DATE	DESCRIPTION
1	3/13/01	REVISED PARCEL 21WD

APR 09, 2001 08:35:18

9924\ROW\12778RMA.DWG

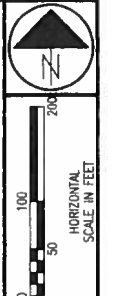
Feb 19, 2001 - 09:17:44

STRUCTURES KEY:

- - RESIDENTIAL BUILDING
- ▒ - COMMERCIAL BUILDING

- 24 CSX TRANSPORTATION, INC.
- 36 JOHN C. BAKER & PAMELA A. BAKER
- 37 BRADLEY D. TIMMING
- 38 MARY STANISH
- 39 BONDED OIL CO.
- 41 MARY MAGUIRE
- 42 NEW HOPEWELL CHURCH OF GOD IN CHRIST
- 53 OI TECH CENTERS STS INC.

LUC-246-2.19 (DORR STREET)
 FRAC. SECTION 32 T.9S. R.7E.
 & SECTION 5 T.3 U.S.R.
 CITY OF TOLEDO
 LUCAS COUNTY



W.A. HODGE ADDITION
VOLUME 28 PAGE 21

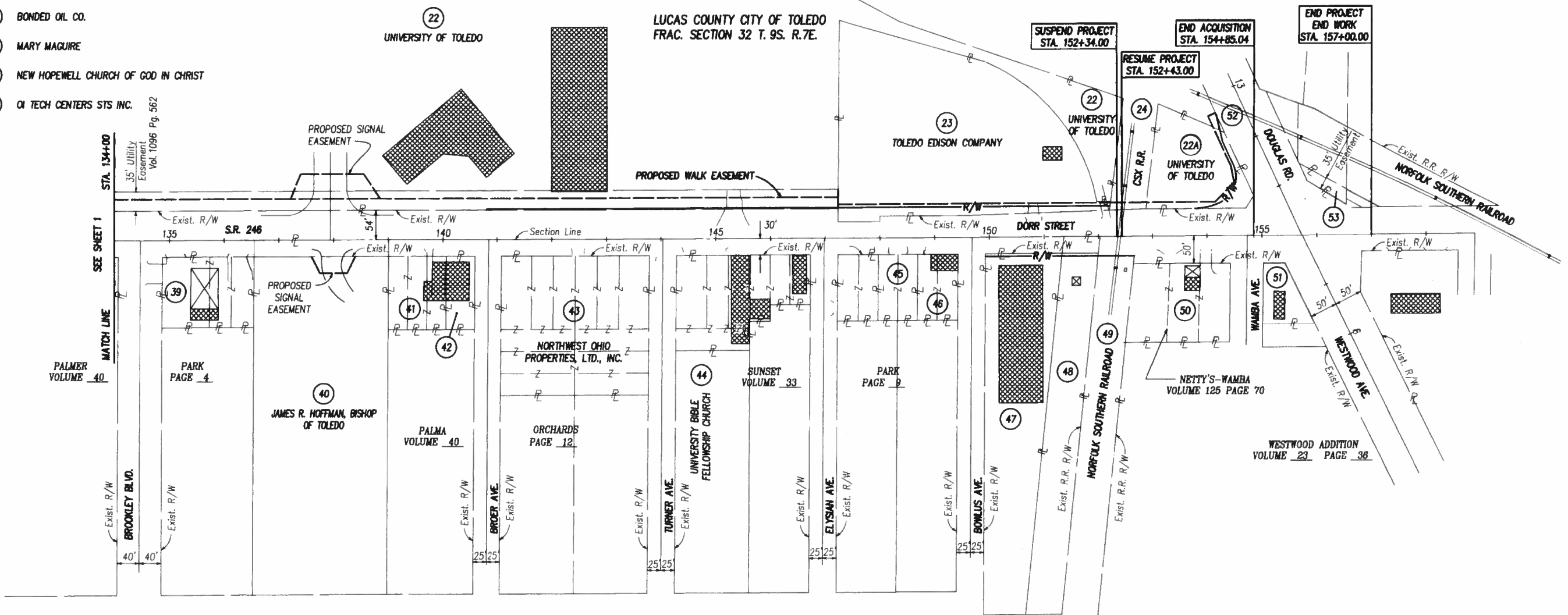
LUCAS COUNTY CITY OF TOLEDO
FRAC. SECTION 32 T.9S. R.7E.

SUSPEND PROJECT
STA. 152+34.00

END ACQUISITION
STA. 154+85.04

END PROJECT
END WORK
STA. 157+00.00

RESUME PROJECT
STA. 152+43.00



35' Utility Easement
Vol. 1096 Pg. 562

SEE SHEET 1
MATCH LINE
STA. 134+00

PALMER
VOLUME 40

PARK
PAGE 4

JAMES R. HOFFMAN, BISHOP
OF TOLEDO

PALMA
VOLUME 40

ORCHARDS
PAGE 12

SUNSET
VOLUME 33

PARK
PAGE 9

NETTY'S-WAMBA
VOLUME 125 PAGE 70

WESTWOOD ADDITION
VOLUME 23 PAGE 36

LUCAS COUNTY CITY OF TOLEDO
NE 1/4 SECTION 5 T.3 U.S.R.

- 45 HALEY LIVING TRUST
- 46 RICHARD A. HALEY & ROSE M. HALEY, LIVING TRUST
- 47 KEITH A. STEVENS & KATHY JO STEVENS
- 48 TOLEDO EDISON COMPANY
- 49 CSX TRANSPORTATION, INC.
- 50 ALLEN NETTERFIELD
- 51 G & T INVESTMENTS, AN OHIO PARTNERSHIP
- 52 PENNSYLVANIA LINES, LLC.

REV.	DATE	DESCRIPTION

P.L.D. NO. 12778
R/W DESIGNER LLA
R/W REVIEWER KED

PROPERTY MAP

LUC-246-2.19 (DORR STREET)

9924 ROW\12778RMB.DWG

TOTAL NUMBER OF:
9 OWNERSHIPS
12 PARCELS
0 TOTAL TAKES
0 OWNERSHIPS W/STRUCTURES INVOLVED
0 OWNERSHIPS W/ "P" ITEMS

PARCEL NO.	OWNER	FROM SHEET NO.	OWNERS RECORD		AUDITOR'S PARCEL NUMBER	RECORD AREA ACRES	TOTAL P.R.O. ACRES	TO BE ACQUIRED				NET RESIDUE		TYPE FUND CITY	REMARKS & PERSONALTY	AS ACQUIRED	
			VOLUME	PAGE				GROSS	P.R.O.	NET	BLDG'S.	LEFT	RIGHT			VOLUME	PAGE
PARCEL NUMBERS 1-20 NOT USED																	
21-T	BP EXPLORATION & OIL, INC.	6	970678	C07	20-04021	0.557	0.000	0.021	0.000	0.021					CONNECT A DRIVE		
22-WD	UNIVERSITY OF TOLEDO	7,8	980283	D04	20-83920	0.452	0.000	0.178	0.000	0.178							
22-WD-1		11,12	950316	A12	20-83960/61	10.388	0.000	0.031	0.000	0.031							
22-U		6-8			20-83911/12	3.652	0.000	0.720	0.000	0.720					UTILITY & WALK EASEMENT		
22-U-1		8			20-83941	1.504	0.000	0.132	0.000	0.132					WALK EASEMENT		
22-U-2		8-11			20-83722/23/24		0.000	0.535	0.000	0.535					WALK EASEMENT		
22-U-3		10			20-83720	39.790	0.000	0.145	0.000	0.145					SIGNAL EASEMENT		
					20-83964	0.344	0.000										
					20-83931	0.416	0.000										
					20-83900	1.060	0.000										
					20-83051	0.988	0.000										
GRAND TOTAL						58.594	0.000					58.385					
UTILITY & WALK MAINTENANCE																	
UTILITY & WALK																	
SIGNAL MAINTENANCE																	
22A-WD	UNIVERSITY OF TOLEDO	13,14	950086	A05	20-04017	0.583	0.000	0.075	0.000	0.075							
22A-T								0.056	0.000	0.056					GRADING		
23-WD	THE TOLEDO EDISON COMPANY	12,13	790450	C07	20-83727	2.253	0.000	0.154	0.000	0.154							
23-T		12,13						0.063	0.000	0.063					GRADING		
24-T	CSX TRANSPORTATION, INC.	13	293	65	20-99019	0.299	0.000	0.020	0.000	0.020					GRADING		
25	JABBAR YOUSIF & SAAD ROUMAYA	6	960403	B01	20-89121	0.360									NO R/W REQUIRED		
26	ROSE M. BARONE, TRUSTEE	6,7	970067	A09	20-11501	0.193									NO R/W REQUIRED		
					20-11504	0.257											
GRAND TOTAL						0.450											
27	DORR SECOR MEDICAL MALL, INC., AN OHIO CORPORATION	7	860417	D10	20-11507	0.193									NO R/W REQUIRED		
			860417	D10	20-11511	0.145											
			860417	D10	20-11514	0.196											
			860417	D10	20-48501	0.225											
GRAND TOTAL						0.759											

NOTE: UNDER NO CIRCUMSTANCES ARE TEMPORARY EASEMENTS TO BE USED FOR STORAGE OF MATERIAL OR EQUIPMENT BY THE CONTRACTOR UNLESS NOTED OTHERWISE.

** = ENCROACHMENTS (IF ANY)

ALL TEMPORARY PARCELS TO BE OF 12 MONTHS DURATION.

FEDERAL PROJECT NO.

STATE JOB NO. 02888 (0)

FD. NO. 12778

R/W DESIGNER LLA
R/W REVIEWER KED

SUMMARY OF ADDITIONAL RIGHT OF WAY

LUC-246-2.19 (DORR STREET)

3/14
90
101

REV.	DATE	DESCRIPTION

GRANTEE:
ALL RIGHT OF WAY ACQUIRED IN THE NAME
OF CITY OF TOLEDO, UNLESS OTHERWISE
SHOWN.

FEB 20 2001

TOTAL NUMBER OF:
9 OWNERSHIPS
12 PARCELS
0 TOTAL TAKES
0 OWNERSHIPS W/STRUCTURES INVOLVED
0 OWNERSHIPS W/ "P" ITEMS

NET RESIDUE = RECORD AREA - TOTAL PRO - NET TAKE

PARCEL NO.	OWNER	FROM SHEET NO.	OWNERS RECORD		AUDITOR'S PARCEL NUMBER	RECORD AREA ACRES	TOTAL P.R.O. ACRES	TO BE ACQUIRED				NET RESIDUE		TYPE FUND	REMARKS & PERSONALTY	AS ACQUIRED	
			VOLUME	PAGE				GROSS	P.R.O.	NET	BLDG'S.	LEFT	RIGHT			VOLUME	PAGE
28-T	FIRST ANTIOCH BAPTIST CHURCH (OF CHRIST) INC.	7	820415	A08	20-48507	0.228	-	0.012	-	0.012			CITY	GRADING			
29	FLOYD KING & NORMA JEAN KING	7,8	880402	A09	20-48514	0.121	-							NO R/W REQUIRED			
			88Q402	A09	20-48517	0.121	-										
			88Q402	A09	20-48521	0.121	-										
			88Q402	A09	20-48524	0.121	-										
	GRAND TOTAL					0.484	-										
30-T	AUTO PLUS MUFFLER SHOPS, INC., AN OHIO CORPORATION	8	860033	A01	20-76194	0.115	-	0.023	-	0.023							
					20-76191	0.115	-										
					20-76187	0.161	-										
	GRAND TOTAL					0.391	-							GRADING & DRIVE CONSTRUCTION			
31	DALE FRANTZ	8	860410	A10	20-76007	0.164	-							NO R/W REQUIRED			
32	YOUSSEFF S. SAADEH	8	910210	A03	20-76004	0.115	-							NO R/W REQUIRED			
			910210	A03	20-76001	0.115	-										
			910210	A03	20-76011	0.120	-										
	GRAND TOTAL					0.350	-										
33	MACK FISHER	8	870278	D06	20-31001	0.129	-							NO R/W REQUIRED			
			870278	D06	20-31004	0.129	-										
	GRAND TOTAL					0.258	-										
34	NANCY C. FREER, TRUSTEE	8,9	990123	C12	20-31007	0.190	-							NO R/W REQUIRED * STONE WALL			
35	BRADLEY D. TIMMING	9	920039	C11	20-3114	0.130	-							NO R/W REQUIRED			
36	JOHN C. BAKER & PAMELA A. BAKER	9	910458	B03	20-31017	0.161	-							NO R/W REQUIRED			
			910458	B03	20-55401	0.118	-										
	GRAND TOTAL					0.279	-										
37	BRADLEY D. TIMMING	9	960506	D11	20-55397	0.120	-							NO R/W REQUIRED			
38	MARY STANISH	9	840215	E02	20-55393	0.250	-							NO R/W REQUIRED			
39	BONDED OIL COMPANY	9,10	1798	603	20-55007	0.253	-							NO R/W REQUIRED			
			1798	602	20-55004	0.118	-										
			1798	602	20-55001	0.120	-										
	GRAND TOTAL					0.491	-										
40-U	JAMES R. HOFFMAN, BISHOP OF TOLEDO	10	970307	C03	20-02261	3.610	0.169	0.045	-	0.045			CITY	SIGNAL MAINTENANCE			

NOTE: UNDER NO CIRCUMSTANCES ARE TEMPORARY EASEMENTS TO BE USED FOR STORAGE OF MATERIAL OR EQUIPMENT BY THE CONTRACTOR UNLESS NOTED OTHERWISE.

* = ENCROACHMENTS (IF ANY)

ALL TEMPORARY PARCELS TO BE OF 12 MONTHS DURATION.

FEDERAL PROJECT NO.

STATE JOB NO.

PRO NO.

R/W DESIGNER

LLA

R/W REVIEWER

KED

SUMMARY OF ADDITIONAL RIGHT OF WAY

LUC-246-2.19 (DORR STREET)

4 / 14

91

101

REV.	DATE	DESCRIPTION

TOTAL NUMBER OF:
9 OWNERSHIPS
12 PARCELS
0 TOTAL TAKES
0 OWNERSHIPS W/STRUCTURES INVOLVED
0 OWNERSHIPS W/ "P" ITEMS

NET RESIDUE = RECORD AREA - TOTAL PRO - NET TAKE

PARCEL NO.	OWNER	FROM SHEET NO.	OWNERS RECORD		AUDITOR'S PARCEL NUMBER	RECORD AREA ACRES	TOTAL P.R.O. ACRES	TO BE ACQUIRED				NET RESIDUE		TYPE FUND	REMARKS & PERSONALTY	AS ACQUIRED		
			VOLUME	PAGE				GROSS	P.R.O.	NET	BLDG'S.	LEFT	RIGHT			VOLUME	PAGE	
41	MARY MAGUIRE	10,11	930552	A01	20-54714	0.107	0.000								NO R/W REQUIRED			
			930552	A01	20-54711	0.107	0.000							CITY				
					20-54707	0.214	0.000											
	GRAND TOTAL					0.491	0.000											
42	NEW HOPEWELL CHURCH OF GOD IN CHRIST	11	950336	D04	20-54704	0.162	0.000								NO R/W REQUIRED			
43	NORTHWEST OHIO PROPERTIES, LTD., INC.	11	970682	B04	20-54311	1.815	0.000								NO R/W REQUIRED			
44	UNIVERSITY BIBLE FELLOWSHIP CHURCH	11,12	930507	B05	20-54007	0.168	0.000								NO R/W REQUIRED			
			930507	B05	20-54004	0.134	0.000								* BUILDING MOUNTED OVERHEAD SIGN			
			910218	D06	20-54001	0.122	0.000											
			910218	D06	20-54011	0.124	0.000											
			980635	B07	20-91001	0.100	0.000											
			980635	B07	20-91007	0.150	0.000											
			920010	C05	20-91221	0.105	0.000											
	GRAND TOTAL					1.002	0.000											
45	HALEY LIVING TRUST	12	920274	A09	20-91227	0.107	0.000								NO R/W REQUIRED			
			920274	A09	20-91231	0.091	0.000											
	GRAND TOTAL					0.198	0.000											
46	RICHARD A. HALEY & ROSE M. HALEY, LIVING TRUST	12	920274	A01	20-91234	0.099	0.000								NO R/W REQUIRED			
			920274	A05	20-91237	0.105	0.000											
	GRAND TOTAL					0.204	0.000											
47-WD	KEITH A. STEVENS & KATHY-JO STEVENS	12,13	980039	B01	20-02201	1.630	0.098	0.017	0.000	0.017								
48 WD	TOLEDO EDISON COMPANY	13	1381	474	20-02274	1.000	0.046	0.053	0.046	0.007								
49-U	CSX TRANSPORTATION, INC.	13	000041	D08	20-99017	4.090	0.000	0.008	0.000	0.008								
50	ALLEN NETTERFIELD	13,14	860143	D10	20-98996	0.648	0.000								NO R/W REQUIRED			
51	G & T INVESTMENTS, AN OHIO PARTNERSHIP	14	860075	A10	20-98901	0.170	0.000								* OVERHEAD SIGN			
52-U	PENNSYLVANIA LINES LLC. NORFOLK SOUTHERN RAILROAD	14	8	65	20-99003	2.66	0.000	0.002	0.000	0.002					WALK EASEMENT			
52-T								0.008	0.000	0.008					GRADING			
53	OI TECH CENTERS STS INC.	14			18-50111										NO R/W REQUIRED			
54	NANCY C. FREER, TRUSTEE	9			20-31011	0.160	0.000								NO R/W REQUIRED			
															CITY			

NOTE: UNDER NO CIRCUMSTANCES ARE TEMPORARY EASEMENTS TO BE USED FOR STORAGE OF MATERIAL OR EQUIPMENT BY THE CONTRACTOR UNLESS NOTED OTHERWISE.

** = ENCROACHMENTS (IF ANY)

ALL TEMPORARY PARCELS TO BE OF 12 MONTHS DURATION.

FEDERAL PROJECT NO.

STATE JOB NO.

PRO NO.

R/W DESIGNER

SUMMARY OF ADDITIONAL RIGHT OF WAY

LUC 246-2.19 (DORR STREET)

5/14

92
101

REV. DATE DESCRIPTION
DATE OF COMPLETION

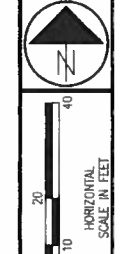
Feb 19, 2001 - 09:22:25

NOTES

1. THE EXISTING RIGHT OF WAY WIDTH AND LOCATION WHERE DETERMINED USING DOCUMENTATION ON FILE FROM LUCAS COUNTY RECORDS.
2. THE SIZE, DEPTH AND LOCATION OF THE BURIED UTILITIES SHOWN OR NOT, ARE NOT WARRANTED. THE CONTRACTOR IS RESPONSIBLE FOR VERIFYING THE EXACT SIZE, DEPTH AND LOCATION OF ALL BURIED UTILITIES WITHIN THE CONSTRUCTION AREA PRIOR TO EXCAVATING.

STRUCTURES KEY:
 [Hatched Box] - RESIDENTIAL BUILDING
 [Cross-hatched Box] - COMMERCIAL BUILDING

FEB 21 2001

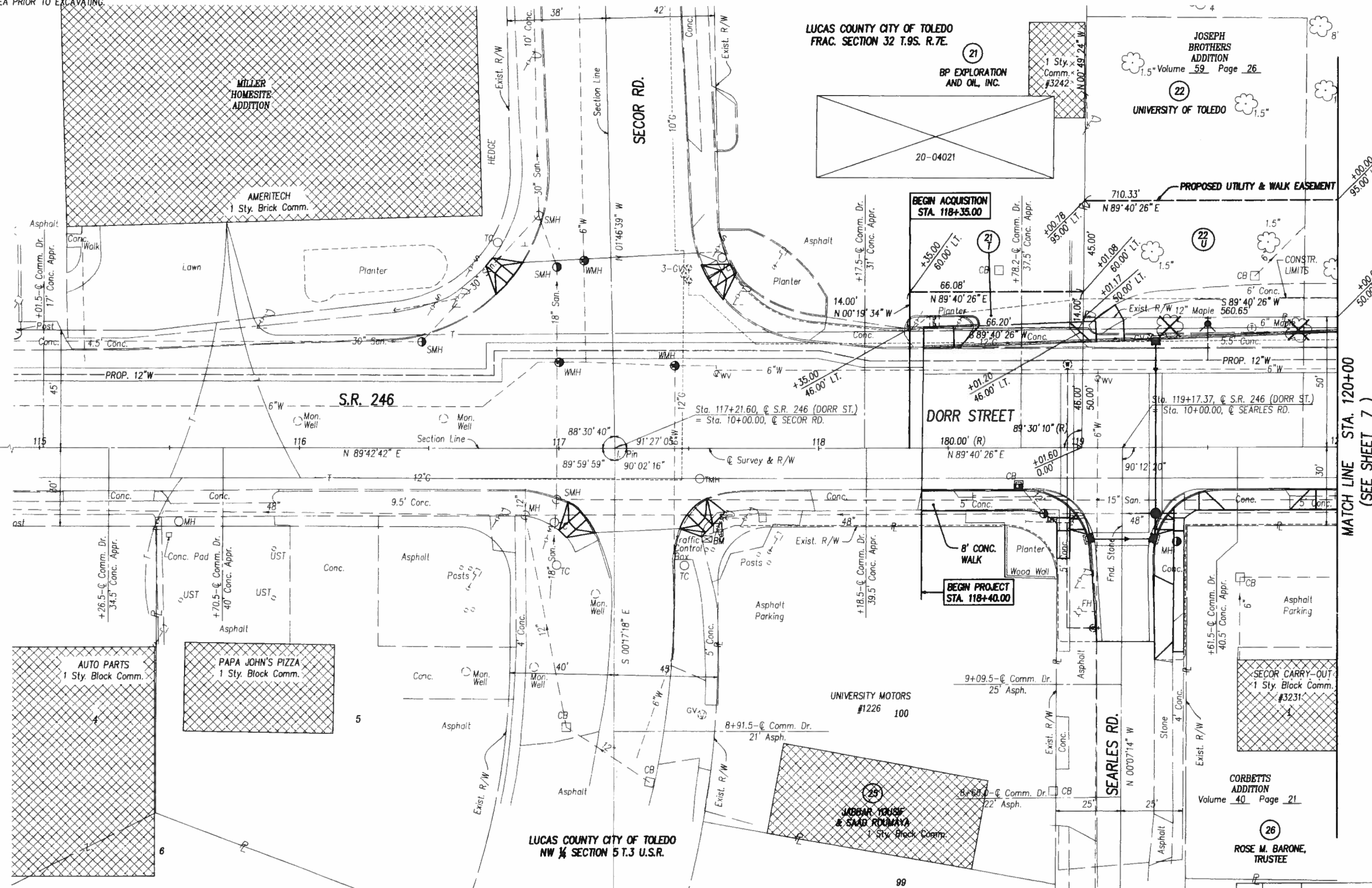


PROJ. NO. 12778
 R/W DESIGNER LLA
 R/W REVIEWER KED

RIGHT OF WAY PLAN - S.R. 246 (DORR STREET)
 STA. 115+00 TO STA. 120+00

LUC-246-2.19 (DORR STREET)

6 / 14
 93
 101



99241.P0W\12778RDC.DWG

SECOR GARDENS

REV.	DATE	DESCRIPTION

Feb 19, 2001 - 09:26:09

STRUCTURES KEY:
- RESIDENTIAL BUILDING
- COMMERCIAL BUILDING

NOTE THE EXISTING RIGHT OF WAY WIDTH AND LOCATION WHERE DETERMINED USING DOCUMENTATION ON FILE FROM LUCAS COUNTY RECORDS.

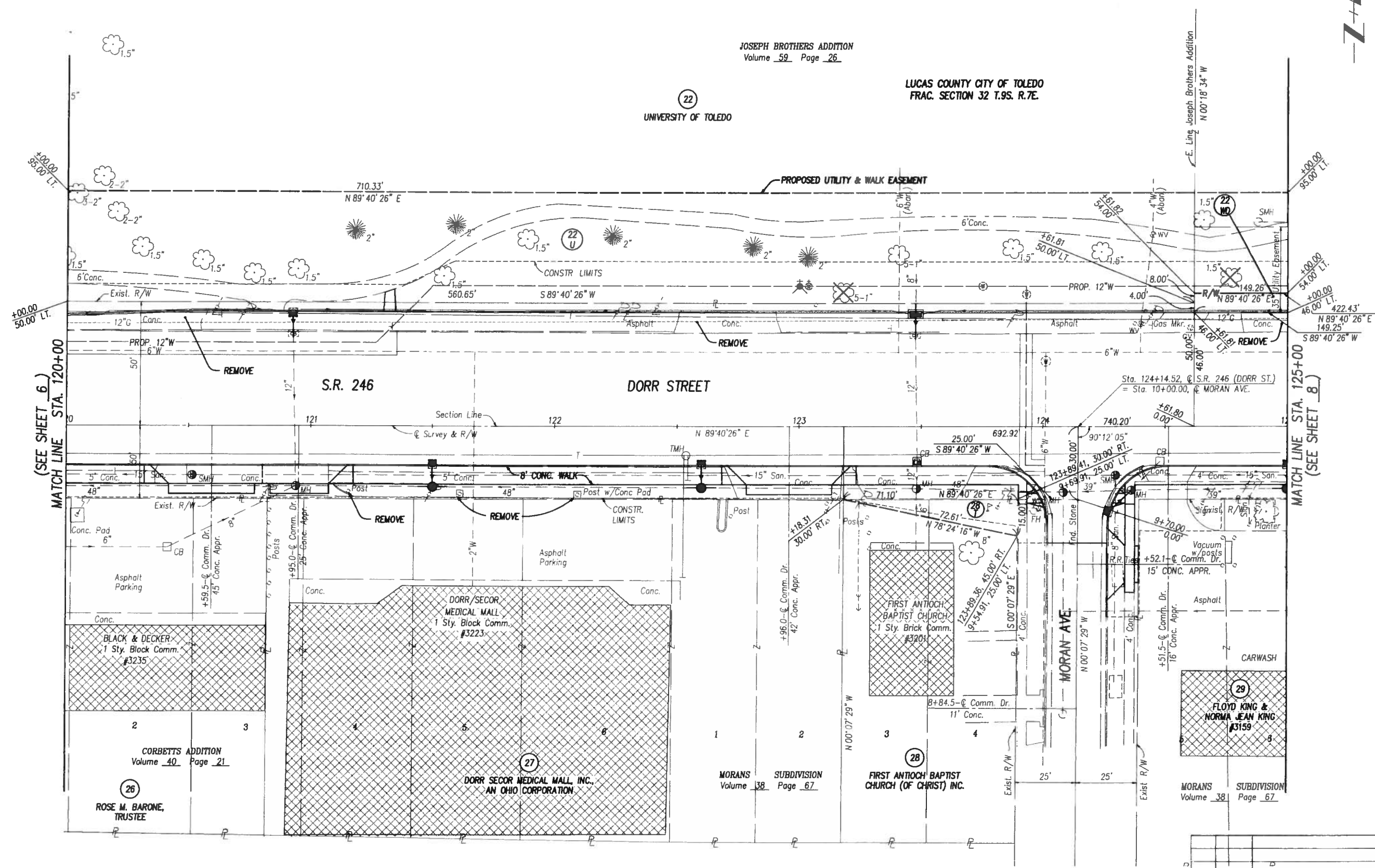
FEET 20 FEET



JOSEPH BROTHERS ADDITION
Volume 59 Page 26

LUCAS COUNTY CITY OF TOLEDO
FRAC. SECTION 32 T.9S. R.7E.

22
UNIVERSITY OF TOLEDO



(SEE SHEET 6)
MATCH LINE STA. 120+00

MATCH LINE STA. 125+00
(SEE SHEET 8)

P.L.D. NO.
12778

R/W DESIGNER
LLA
R/W REVIEWER
KED

RIGHT OF WAY PLAN - S.R. 246 (DORR STREET)
STA. 120+00 TO STA. 125+00

7/14

94
101

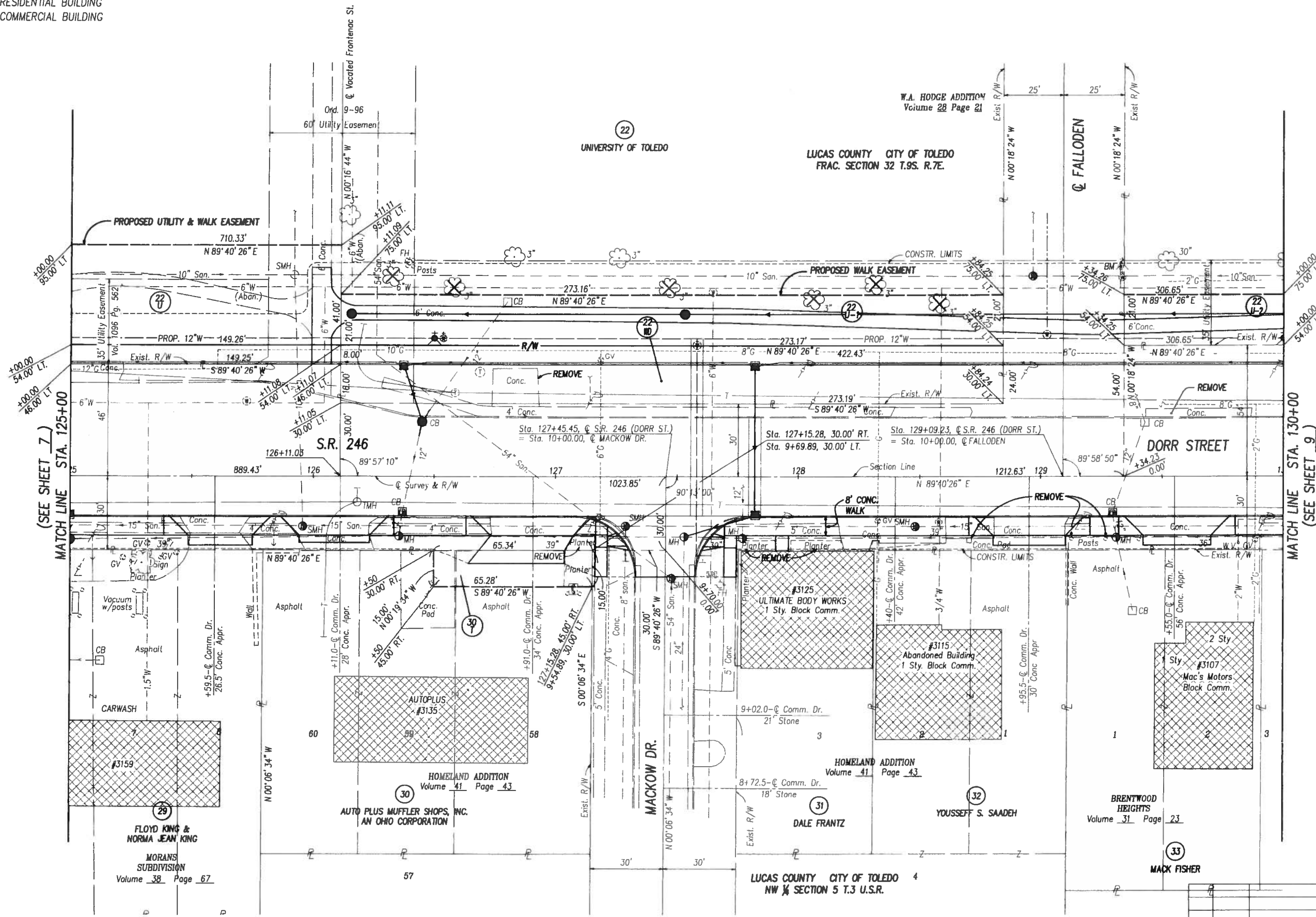
LUCAS COUNTY CITY OF TOLEDO
NW 1/4 SECTION 5 T.3 U.S.R.

9924\ROW\12778RDD.DWG

REV.	DATE	DESCRIPTION

STRUCTURES KEY:
[Symbol] - RESIDENTIAL BUILDING
[Symbol] - COMMERCIAL BUILDING

NOTE THE EXISTING RIGHT OF WAY WIDTH AND LOCATION WHERE DETERMINED USING DOCUMENTATION ON FILE FROM LUCAS COUNTY RECORDS.



(SEE SHEET 7)
MATCH LINE STA. 125+00

MATCH LINE STA. 130+00
(SEE SHEET 9)

P.L.D. NO. 12778
P/W DESIGNER LLA
P/W REVIEWER KED

RIGHT OF WAY PLAN - S.R. 246 (DORR STREET)
STA. 125+00 TO STA. 130+00

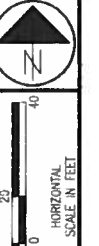
LUC-246-2.19 (DORR STREET)

8 / 14
95
101

REV.	DATE	DESCRIPTION

STRUCTURES KEY:
- RESIDENTIAL BUILDING
- COMMERCIAL BUILDING

NOTE THE EXISTING RIGHT OF WAY WIDTH AND LOCATION WHERE DETERMINED USING DOCUMENTATION ON FILE FROM LUCAS COUNTY RECORDS.



P.L.D. NO
12778

R/W DESIGNER
LLA
R/W REVIEWER
KED

RIGHT OF WAY PLAN - S.R. 246 (DORR STREET)
STA. 130+00 TO STA. 135+00

LUC-246-2.19 (DORR STREET)

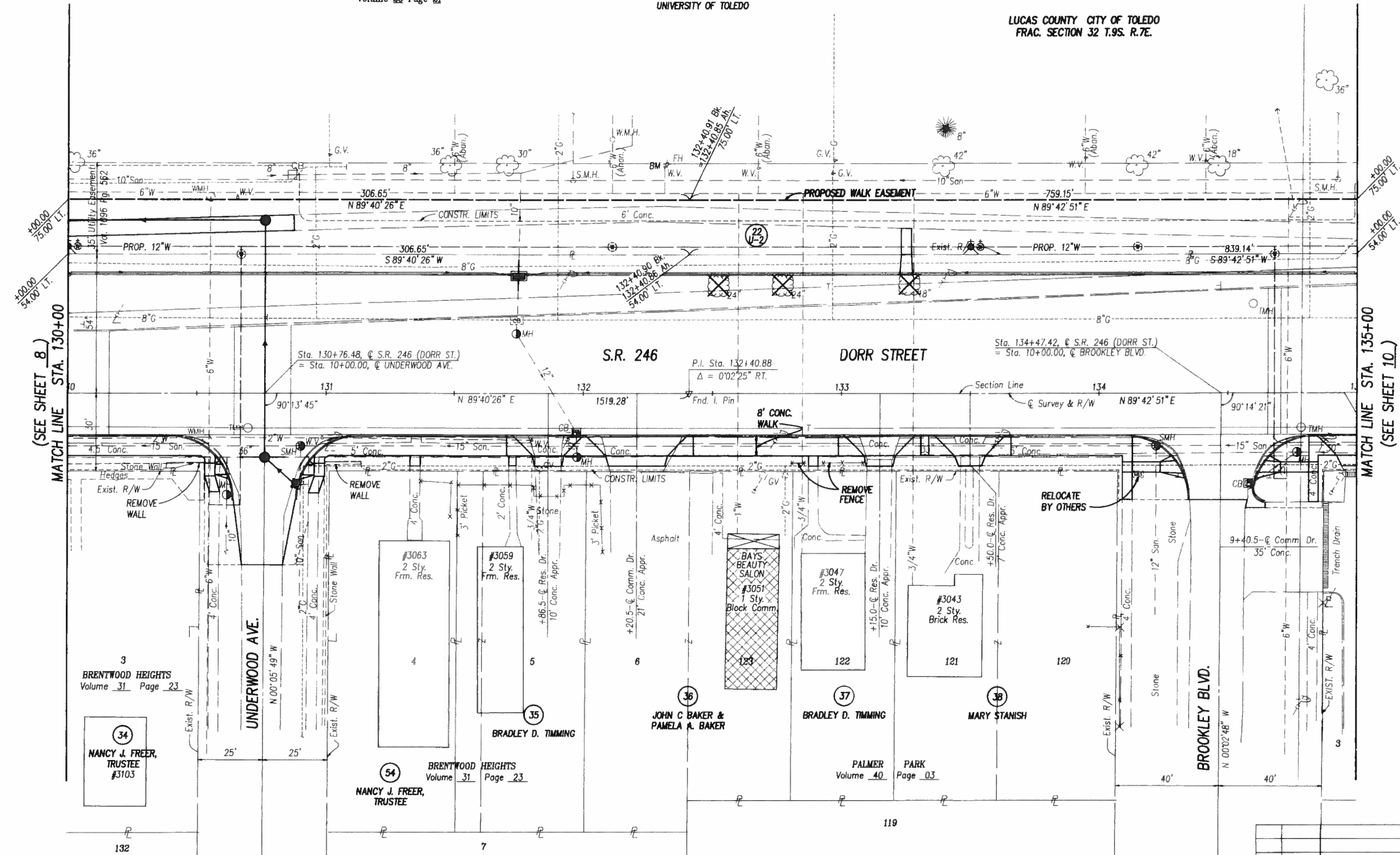
9 / 14

96
101

W.A. HODGE ADDITION
Volume 28 Page 21

(22)
UNIVERSITY OF TOLEDO

LUCAS COUNTY CITY OF TOLEDO
FRAC. SECTION 32 T.9S. R.7E.



(SEE SHEET 8.)
MATCH LINE STA. 130+00

MATCH LINE STA. 135+00
(SEE SHEET 10.)

3 BRENTWOOD HEIGHTS
Volume 31 Page 23

(34)
NANCY J. FREER,
TRUSTEE
#3103

UNDERWOOD AVE.
N 00° 05' 49" W

#3063
2 Sty.
Frm. Res.

#3059
2 Sty.
Frm. Res.

(54)
NANCY J. FREER,
TRUSTEE

5 BRENTWOOD HEIGHTS
Volume 31 Page 23

(35)
BRADLEY D. TIMMING

(36)
JOHN C. BAKER &
PAMELA A. BAKER

(37)
BRADLEY D. TIMMING

(38)
MARY STANISH

PALMER PARK
Volume 40 Page 03

BAYS BEAUTY SALON
#3051
1 Sty.
Block Comm.

#3047
2 Sty.
Frm. Res.

#3043
2 Sty.
Brick Res.

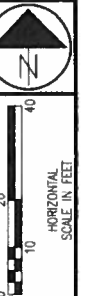
LUCAS COUNTY CITY OF TOLEDO
NW 1/4 SECTION 5 T.3 U.S.R.

LUCAS COUNTY CITY OF TOLEDO
NE 1/4 SECTION 5 T.3 U.S.R.

REV.	DATE	DESCRIPTION

STRUCTURES KEY:
- RESIDENTIAL BUILDING
- COMMERCIAL BUILDING

NOTE THE EXISTING RIGHT OF WAY WIDTH AND LOCATION WHERE DETERMINED USING DOCUMENTATION ON FILE FROM LUCAS COUNTY RECORDS.



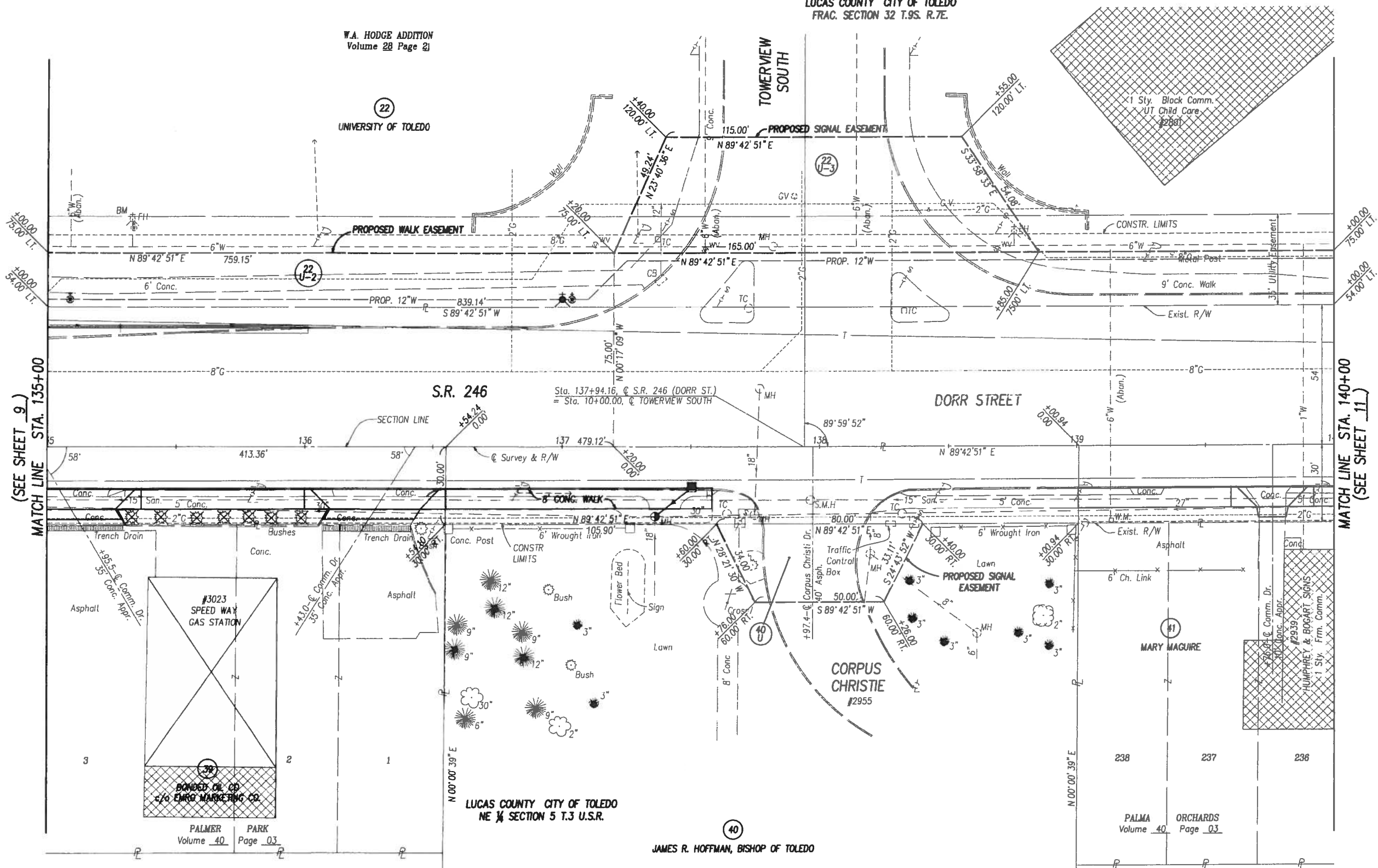
LUCAS COUNTY CITY OF TOLEDO
FRAC. SECTION 32 T.9S. R.7E.

W.A. HODGE ADDITION
Volume 28 Page 21

UNIVERSITY OF TOLEDO

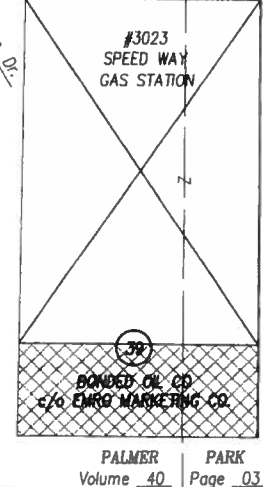
TOWERVIEW SOUTH

1 Sty. Block Comm.
2 UT Child Care
#2881



(SEE SHEET 9)
MATCH LINE STA. 135+00

MATCH LINE STA. 140+00
(SEE SHEET 11)



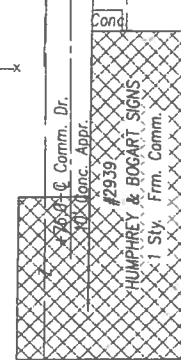
LUCAS COUNTY CITY OF TOLEDO
NE 1/4 SECTION 5 T.3 U.S.R.

JAMES R. HOFFMAN, BISHOP OF TOLEDO

MARY MAGUIRE

CORPUS CHRISTIE
#2955

PALMA ORCHARDS
Volume 40 Page 03



REV.	DATE	DESCRIPTION

RIGHT OF WAY PLAN - S.R. 246 (DORR STREET)
STA. 135+00 TO STA. 140+00

LUC-246-2.19 (DORR STREET)

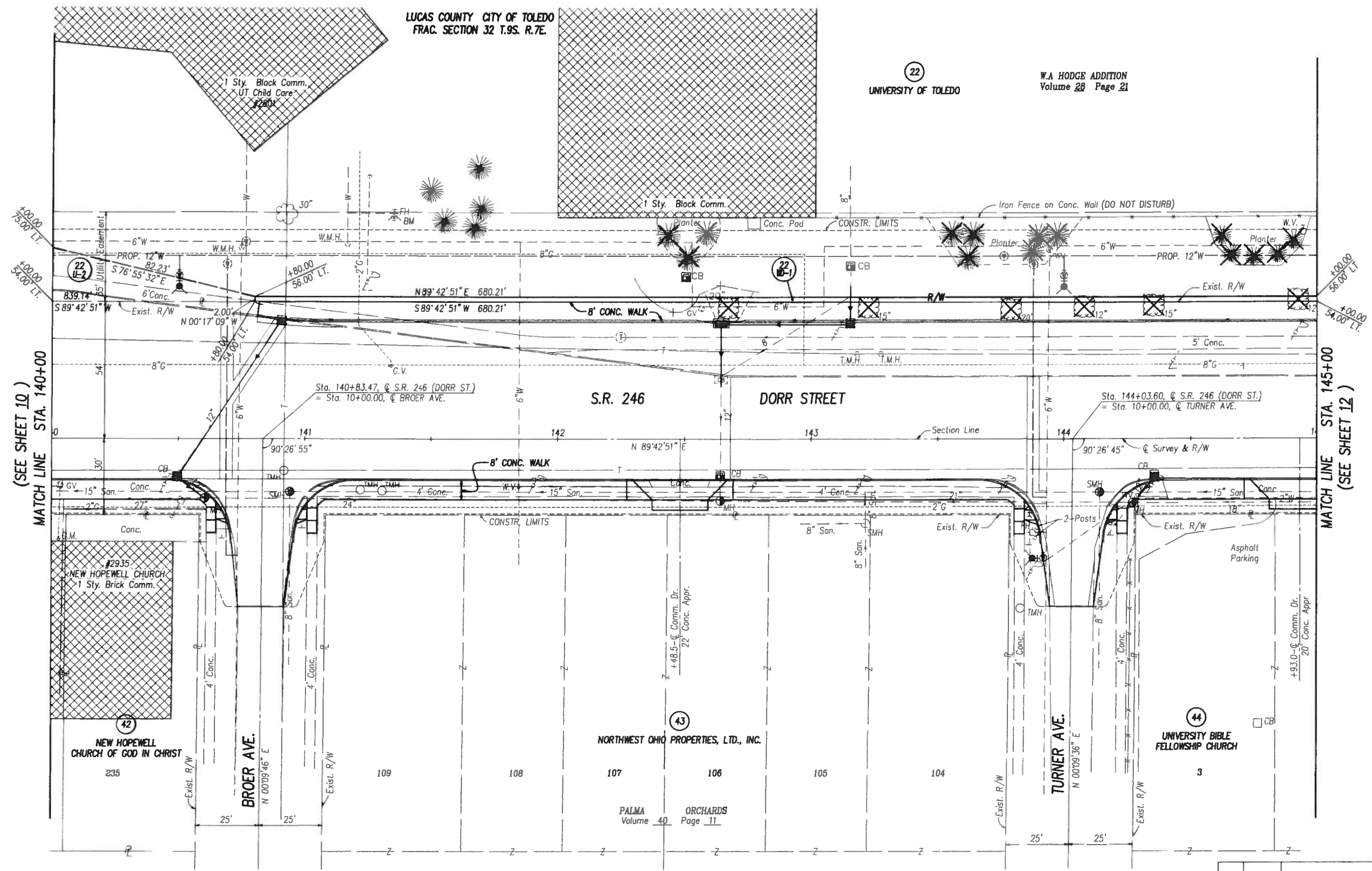
R/W DESIGNER LLA
R/W REVIEWER KED
P.L.D. NO. 12778

10/14
97
101

Feb 19, 2001 - 09:30:53

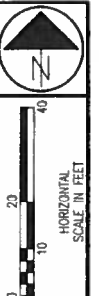
STRUCTURES KEY:
[Symbol] - RESIDENTIAL BUILDING
[Symbol] - COMMERCIAL BUILDING

NOTE THE EXISTING RIGHT OF WAY WIDTH AND LOCATION WHERE DETERMINED USING DOCUMENTATION ON FILE FROM LUCAS COUNTY RECORDS.



(SEE SHEET 10)
MATCH LINE STA. 140+00

MATCH LINE STA. 145+00
(SEE SHEET 12)



P.L.D. NO. 12778

R/W DESIGNER LLA
R/W REVIEWER KED

RIGHT OF WAY PLAN - S.R. 246 (DORR STREET)
STA. 140+00 TO STA. 145+00

LUC-246-2.19 (DORR STREET)

11/14

98
101

REV.	DATE	DESCRIPTION

9924\OW\12778RDH.DWG

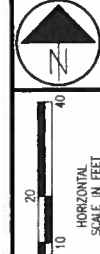
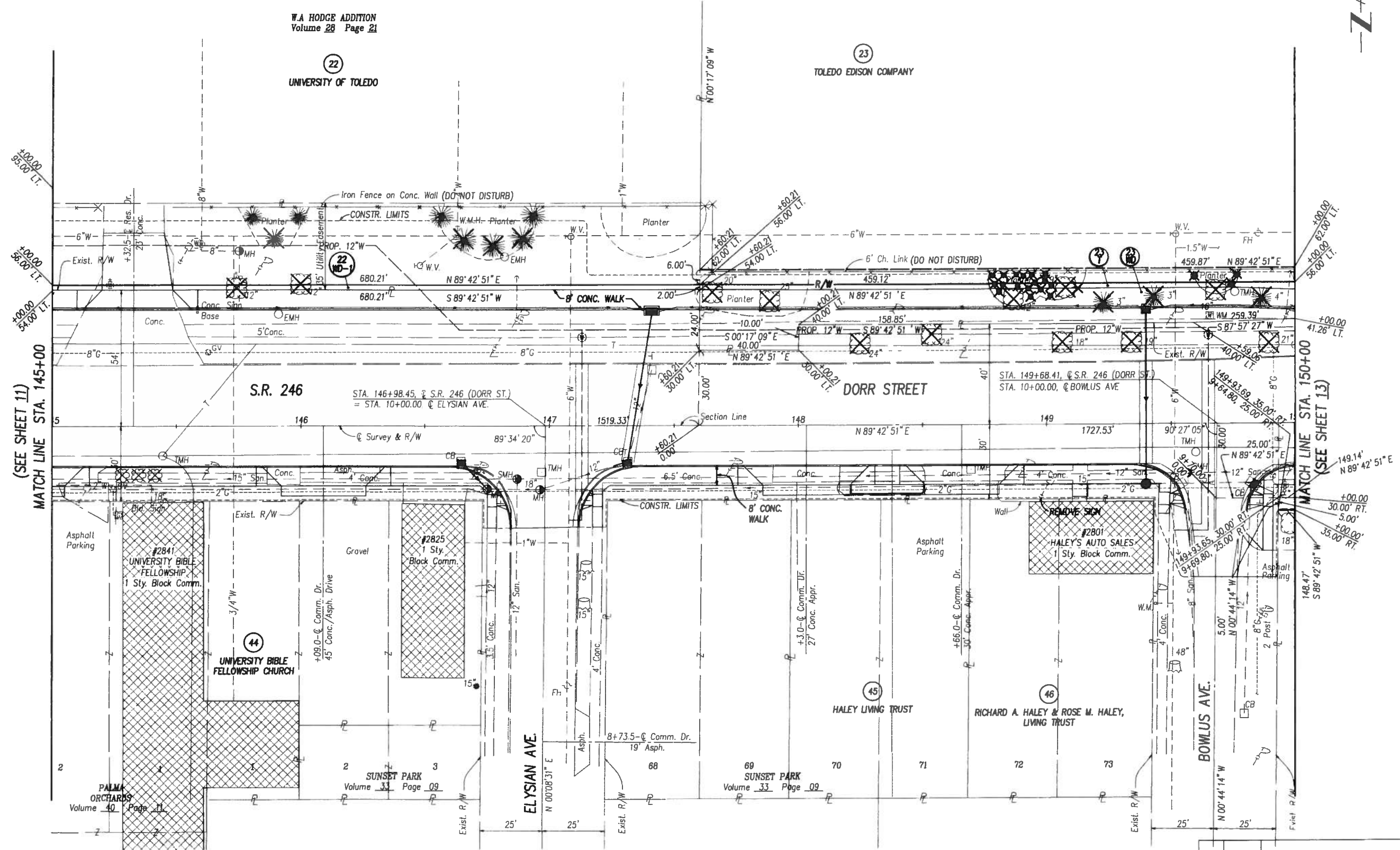
LUCAS COUNTY CITY OF TOLEDO
NE 1/4 SECTION 5 T.3 U.S.R.

STRUCTURES KEY:
 [Symbol] - RESIDENTIAL BUILDING
 [Symbol] - COMMERCIAL BUILDING

NOTE THE EXISTING RIGHT OF WAY WIDTH AND LOCATION WHERE DETERMINED USING DOCUMENTATION ON FILE FROM LUCAS COUNTY RECORDS.

LUCAS COUNTY CITY OF TOLEDO
 FRAC. SECTION 32 T.9S. R.7E.

W.A. HODGE ADDITION
 Volume 28 Page 21



P.L.D. NO. 12778
 R/W DESIGNER LLA
 R/W REVIEWER KED

RIGHT OF WAY PLAN - S.R. 246 (DORR STREET)
 STA. 145+00 TO STA. 150+00

LUC-246-2.19 (DORR STREET)

LUCAS COUNTY CITY OF TOLEDO
 NE 1/4 SECTION 5 T.3 U.S.R.

REV.	DATE	DESCRIPTION

12/14
 99
 101

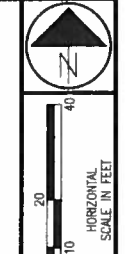
Feb 19, 2001 - 09:35:51

STRUCTURES KEY:
- RESIDENTIAL BUILDING
- COMMERCIAL BUILDING

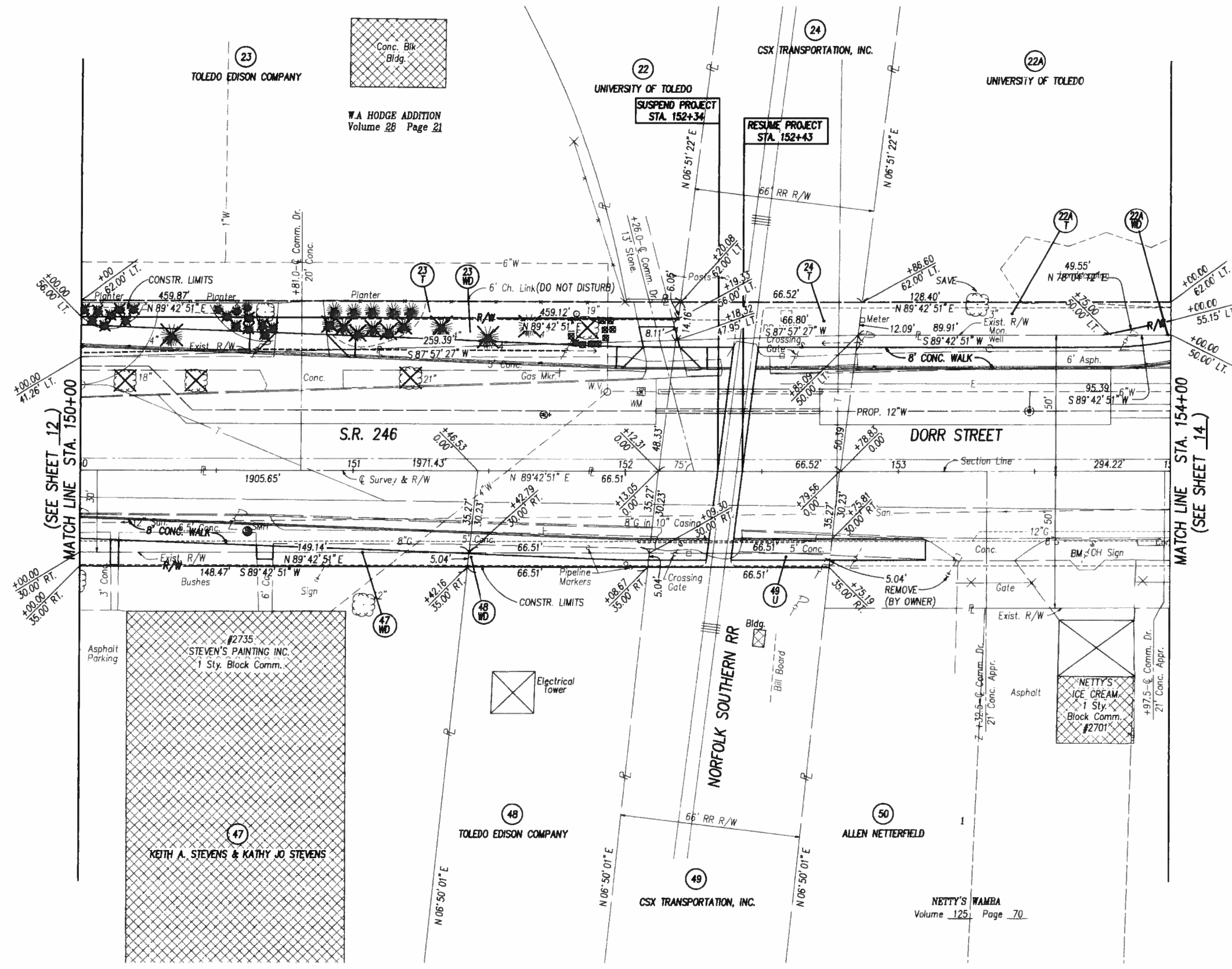
NOTE THE EXISTING RIGHT OF WAY WIDTH AND LOCATION WHERE DETERMINED USING DOCUMENTATION ON FILE FROM LUCAS COUNTY RECORDS.

LUCAS COUNTY CITY OF TOLEDO
FRAC. SECTION 32 T.9S. R.7E.

FEB 20 2001



P.L.D. NO. 12778
R/W DESIGNER LLA
R/W REVIEWER KED



NOTE: RAILROAD CROSSING GATES TO BE RELOCATED BY OWNER.
NOTE: TRACK OWNED BY NORFOLK SOUTHERN RAILROAD, PROPERTY OWNED BY CSX RAILROAD.

RIGHT OF WAY PLAN - S.R. 246 (DORR STREET)
STA. 150+00 TO STA. 154+00

LUC-246-2.19 (DORR STREET)

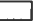

13 / 14
100
101

REV.	DATE	DESCRIPTION

9924 ROW 12778RD.DWG

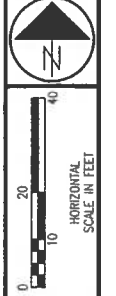
LUCAS COUNTY CITY OF TOLEDO
NE 1/4 SECTION 5 T.3 U.S.R.

Feb. 19, 2001 - 09:36:56

STRUCTURES KEY:
 - RESIDENTIAL BUILDING
 - COMMERCIAL BUILDING

NOTE THE EXISTING RIGHT OF WAY WIDTH AND LOCATION WHERE DETERMINED USING DOCUMENTATION ON FILE FROM LUCAS COUNTY RECORDS.

FEB 20 2001



P.L.D. NO. 12778
R/W DESIGNER LLA
R/W REVIEWER KED

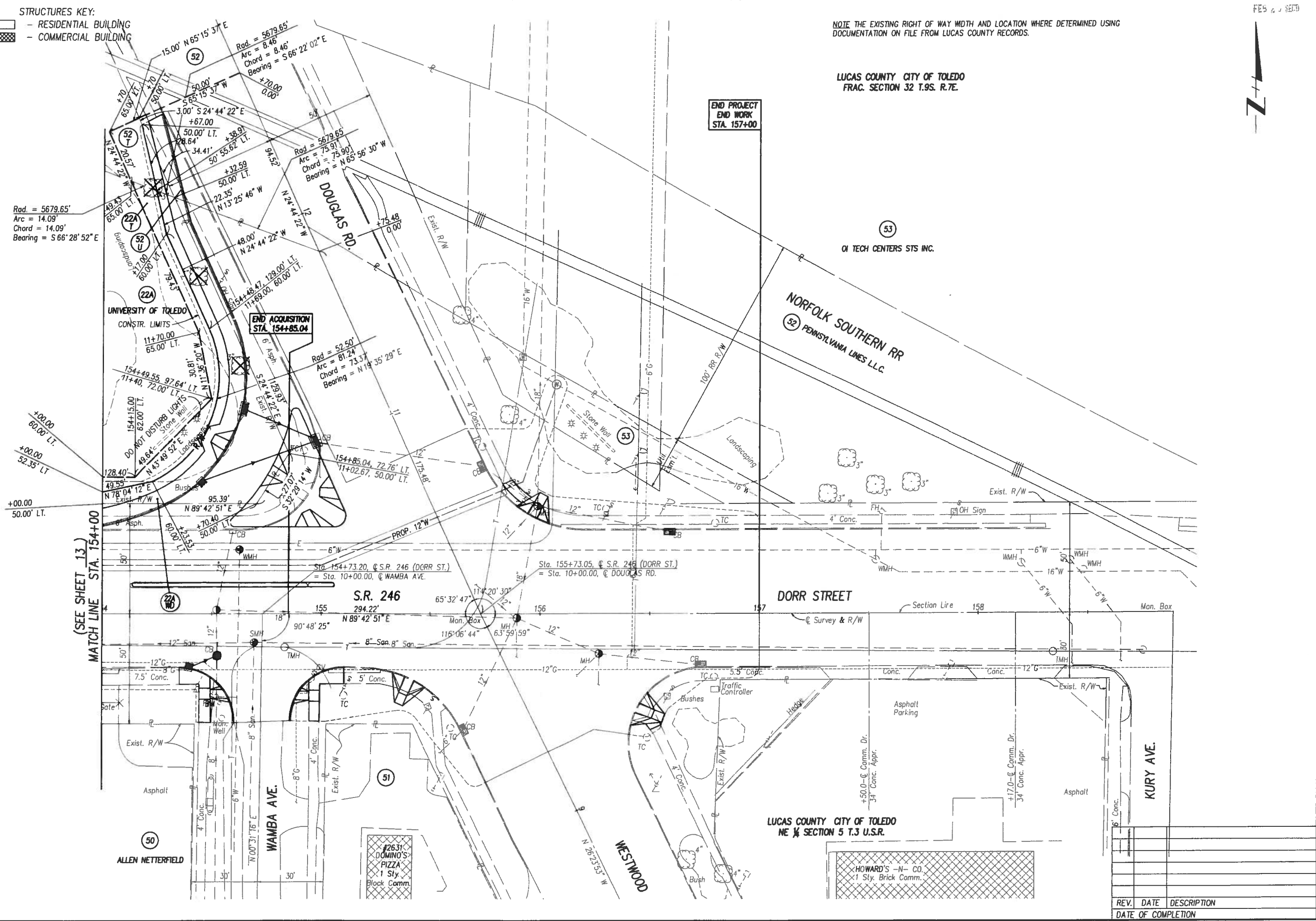
RIGHT OF WAY PLAN - S.R. 246 (DORR STREET)
STA. 154+00 TO STA. 159+00

LUC-246-2.19 (DORR STREET)

14/14

101
101

REV.	DATE	DESCRIPTION



9924.R0W.12778RDK.DWG