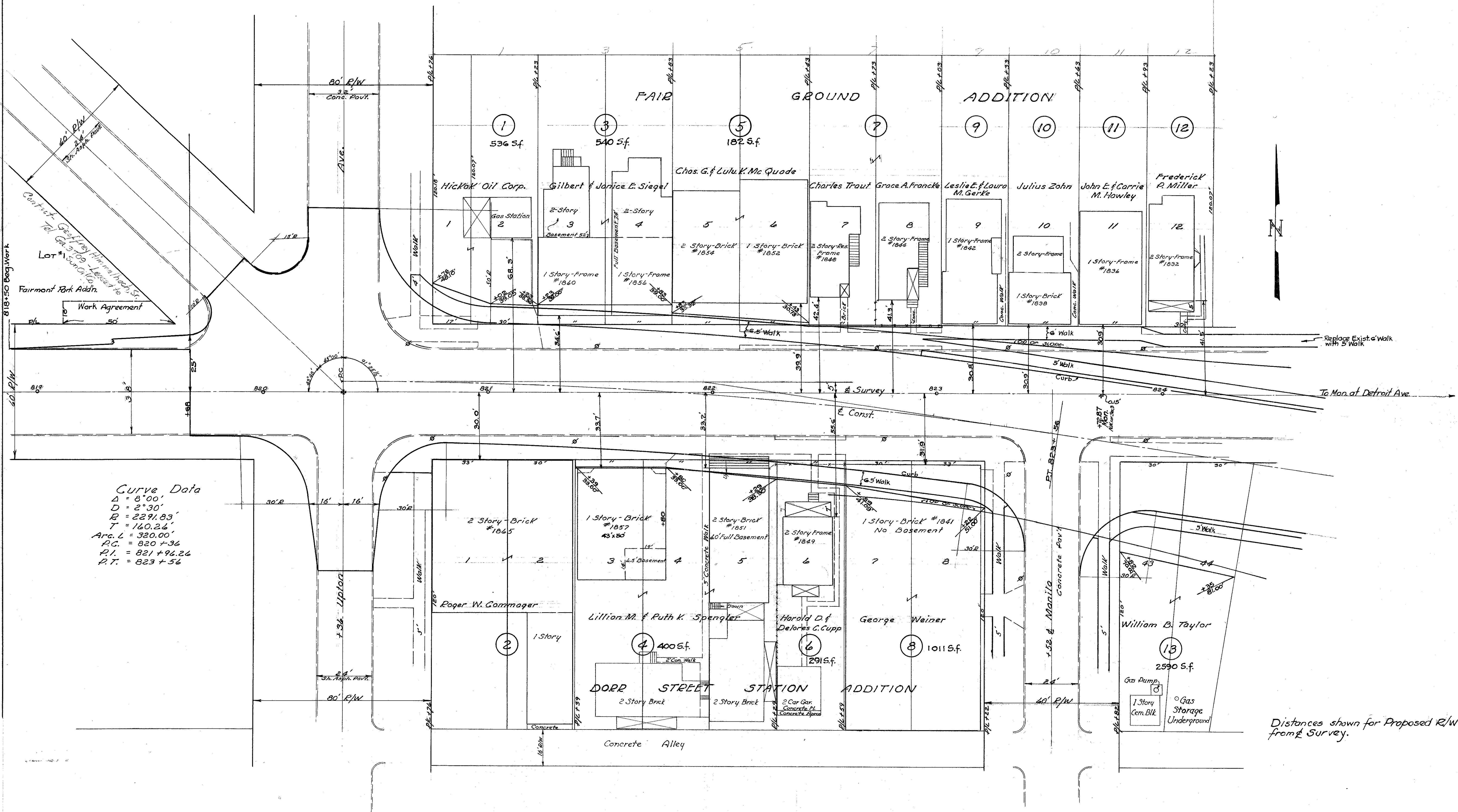


LUCAS COUNTY
LUC.-246-1555
RIGHT OF WAY PLANS

1/6

DATE 1-6-53 DRAWN BY Snell
REVISED
LENGTH OF PROJECT

Scanned July 1997



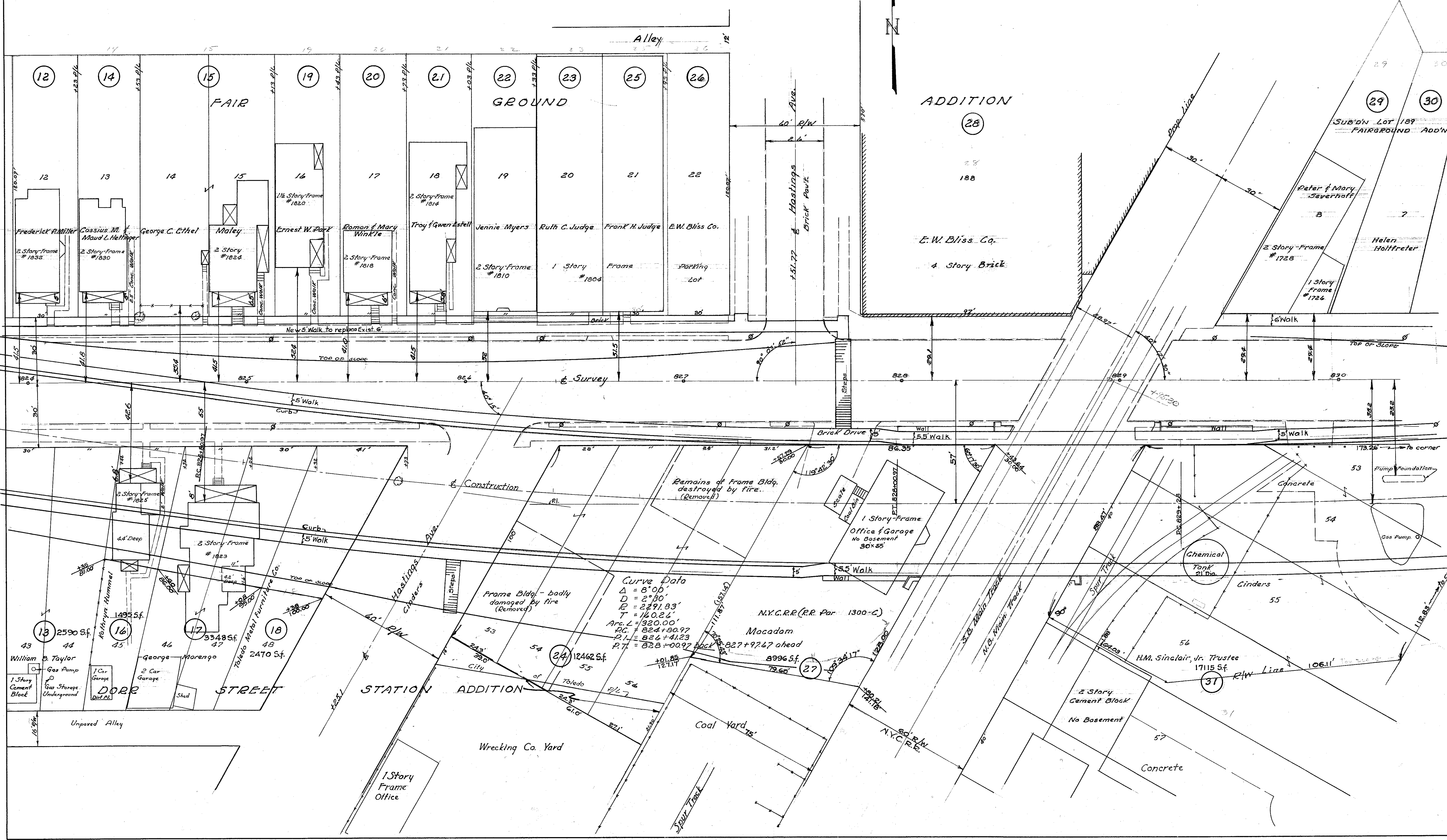
Curve Data
 $\Delta = 8^{\circ}00'$
 $D = 2^{\circ}30'$
 $R = 2291.83'$
 $T = 160.26'$
 $ARC. L = 320.00'$
 $P.C. = 820 + 36$
 $P.I. = 821 + 96.26$
 $P.T. = 823 + 56$

Distances shown for Proposed R/W are from & Survey.

R-246
C-73

Scanned July 1997

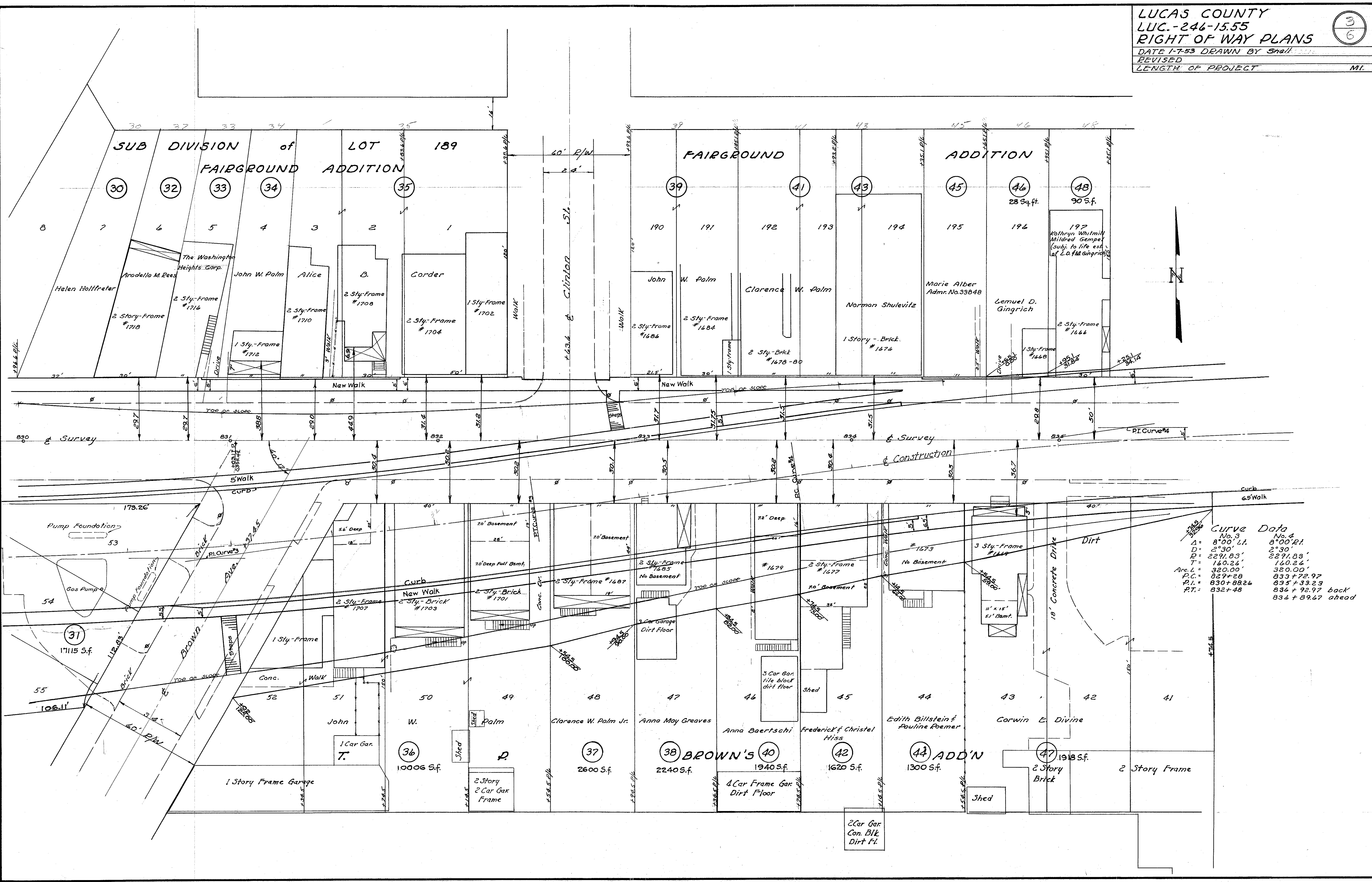
LUCAS COUNTY
 LUC.-246-1555
 RIGHT OF WAY PLANS
 DATE 1-7-53 DRAWN BY *Shell*
 REVISED
 LENGTH OF PROJECT



Scanned
July 1987

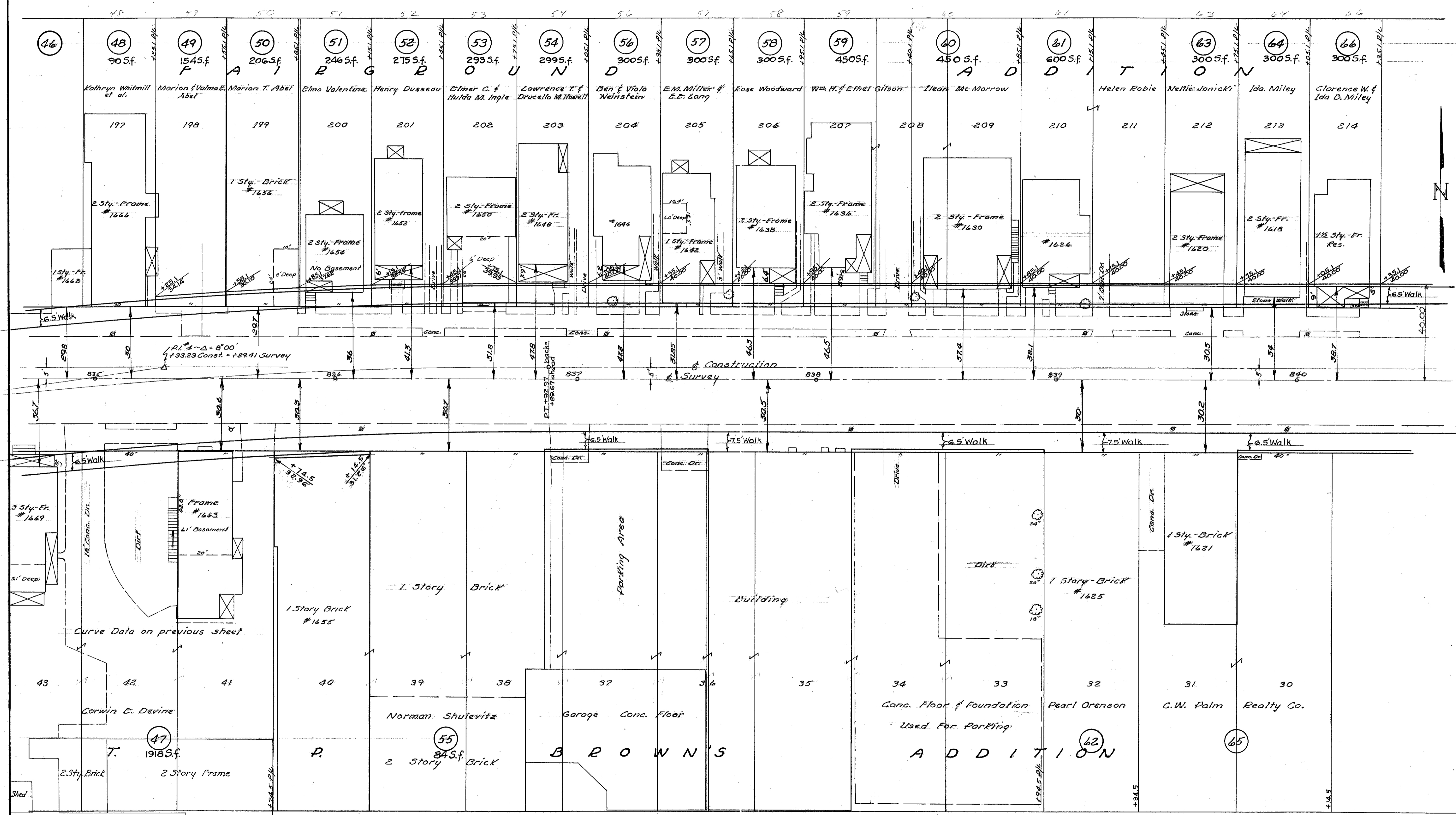
LUCAS COUNTY
LUC.-246-15.55
RIGHT OF WAY PLANS

DATE 1-7-53 DRAWN BY Small
REVISED
LENGTH OF PROJECT MI.

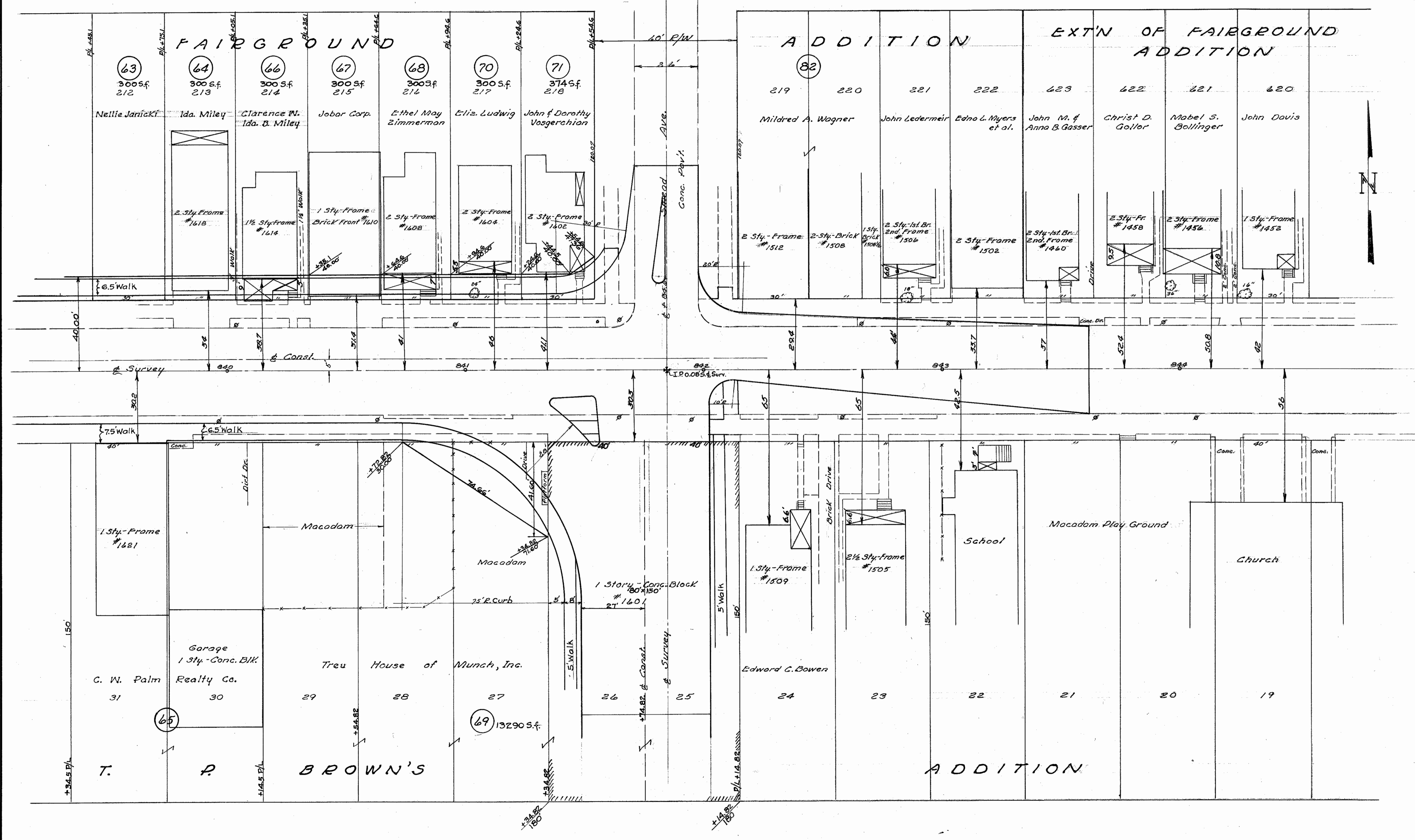


Curve Data

	No. 3	No. 4
Δ	8°00' 11"	8°00' 21"
D	2°30'	2°30'
R	2291.83'	2291.83'
T	140.24'	140.24'
Arc. L	320.00'	320.00'
P.C.	829+28	833+72.97
P.I.	830+88.26	835+33.23
P.T.	832+48	836+92.97 back 836+89.67 ahead



Surveyed July 1947



FAIRGROUND

ADDITION

EXT'N OF FAIRGROUND
ADDITION

- 63 300 S.F. 212 Nellie Janicki
- 64 300 S.F. 213 Ida. Miley
- 66 300 S.F. 214 Clarence W. Ida. B. Miley
- 67 300 S.F. 215 Jobor Corp.
- 68 300 S.F. 216 Ethel May Zimmerman
- 70 300 S.F. 217 Eliz. Ludwig
- 71 374 S.F. 218 John & Dorothy Vosgerchian

- 82 219 Mildred A. Wagner
- 220 220 John Ledermeir
- 221 221 Edno L. Myers et al.
- 222 222 John M. & Anna B. Gasser
- 223 223 Christ D. Gollor
- 222 222 Mabel S. Bollinger
- 221 221 John Davis
- 220 220

- 31 1 Sty. Frame #1621
- 30 Garage 1 Sty. Conc. Bk. C. W. Palm Realty Co.
- 29 Treu House of Munch, Inc.
- 28
- 27 13290 S.F. 69
- 26 1 Story - Conc. Block #1601
- 25 Edward C. Bowers
- 24 1 Sty. Frame #1509
- 23 2 1/2 Sty. Frame #1505
- 22 School
- 21 Macadam Play Ground
- 20
- 19 Church

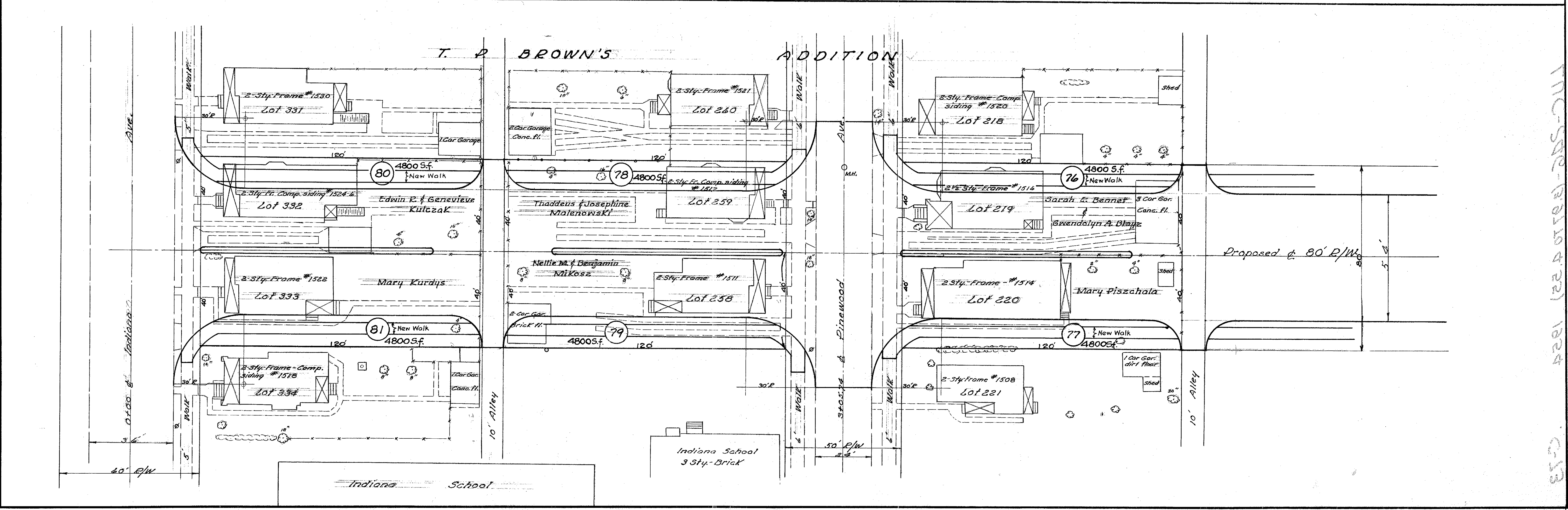
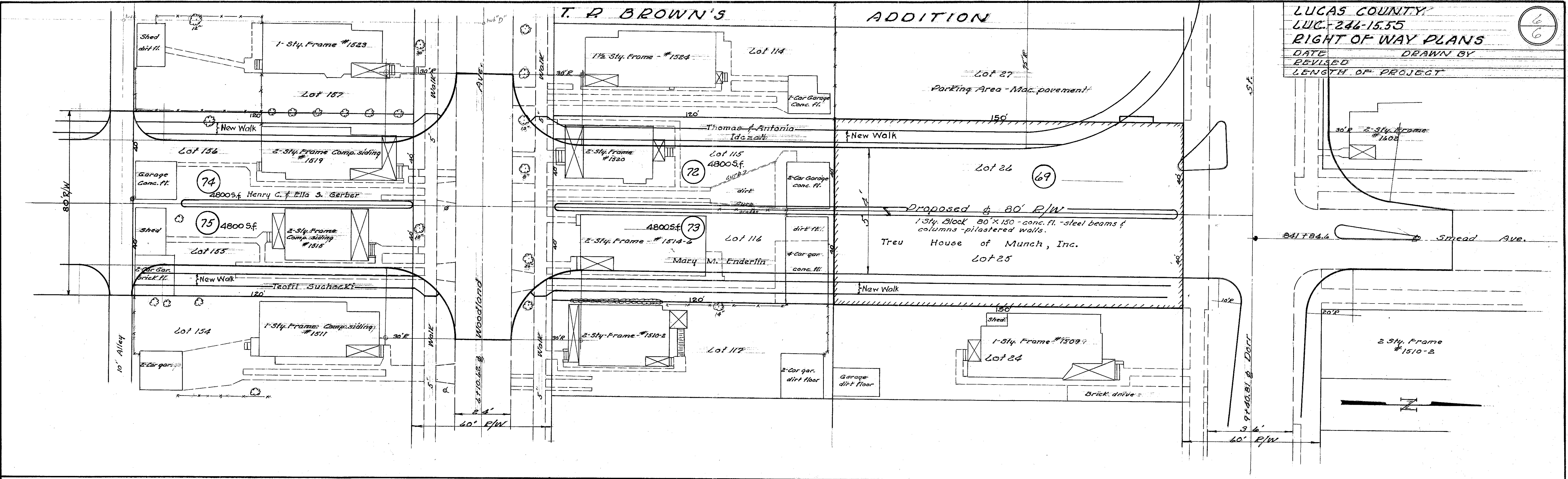
BROWN'S

ADDITION

Scanned
July 14, 2017

LUCAS COUNTY
LUC. 246-15.55
RIGHT OF WAY PLANS
DATE _____ DRAWN BY _____
REVISED _____
LENGTH OF PROJECT _____

6



MUS-SPC-13010-221 1824 C-13