

Scanned July 1997

STATE OF OHIO
DEPARTMENT OF HIGHWAYS
RIGHT OF WAY PLANS
TOLEDO - WAUSEON ROAD
S.H. 20 SEC. TOLEDO (PT)
DORR ST.

LUCAS COUNTY AND CITY OF TOLEDO
Luc SR 246

LEGEND

- Trolley Poles o-o
- Toledo Edison Poles -o-
- Trees [tree symbol]

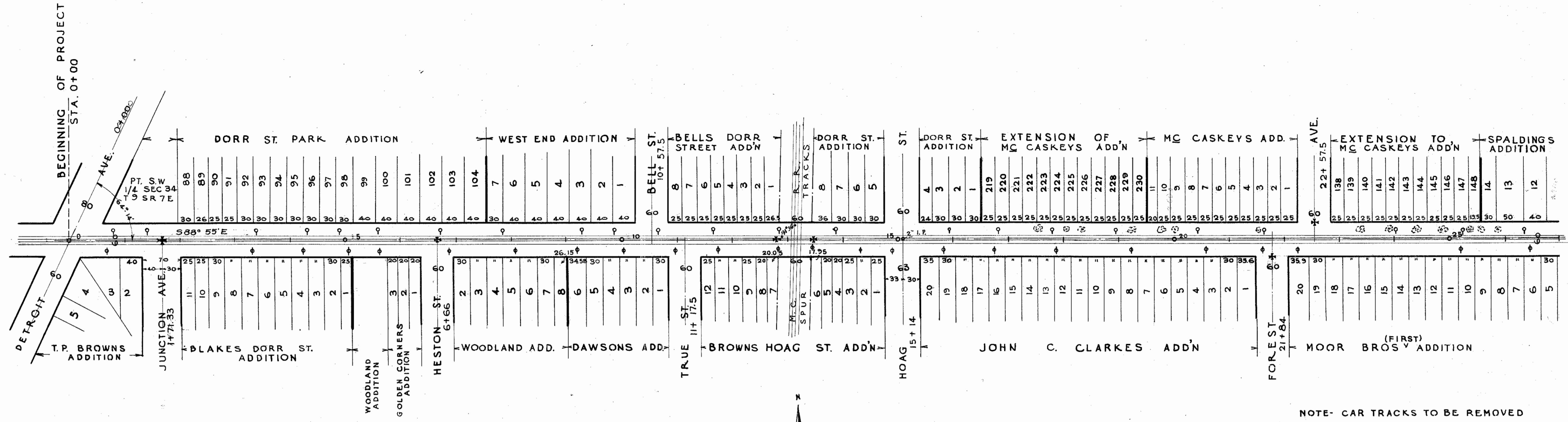
I Otto H. Hohly, Service Director of The City of Toledo, Lucas County, Ohio, do hereby certify that the above right of way is 60 ft in width as shown in the dedicated plat of the City of Toledo, Ohio as now shown on record in the office of the Commissioner of Engineering, Toledo, Ohio.

Signed O. Hohly
Service Director

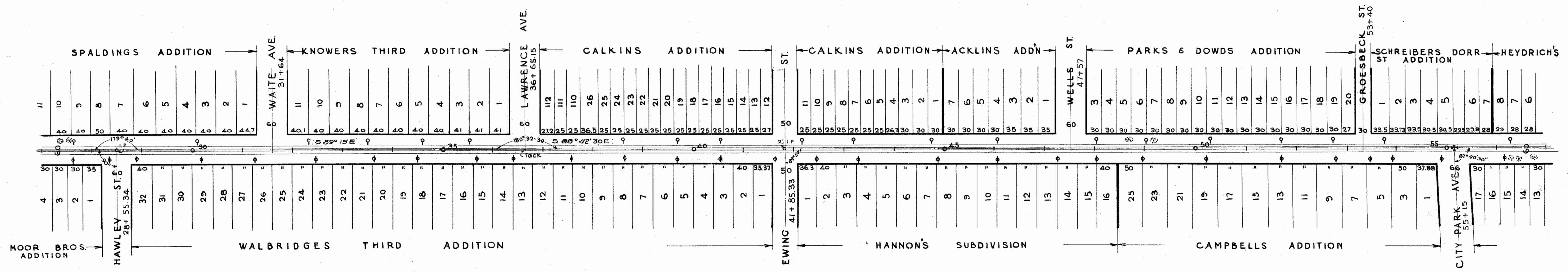
RS# 246 #7 C-12

FOR ANY QUESTIONS PLEASE CONTACT ODOT DISTRICT 2 REAL ESTATE AT 419-353-8131

Scanned July 1987



NOTE- CAR TRACKS TO BE REMOVED



Scanned July 1997

