

O.D.O.T. DISTRICT 2 SURVEY OFFICE (USE ONLY)

PERSONNEL _____

REFERENCE NO. 2

SHEET 2 OF 12

NOTES DENNO DATE 2/25/66

ROUTE SR 246

H.C. CURTIS WEATHER SUNNY

COUNTY LUCAS

R.C. GRANATA TEMP. 26°

TOWNSHIP CITY OF TOLEDO

OMEY

SECTION 36

DWG BY NIESE PID _____

T 9 S R 6 E

TYPE MONUMENT BRASS MONUMENT

ON SURFACE - ~~BELOW~~ ON

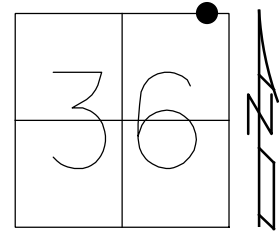
OFFSET Q PAVEMENT _____ LT : RT

_____ TO _____ EDGE PAVEMENT

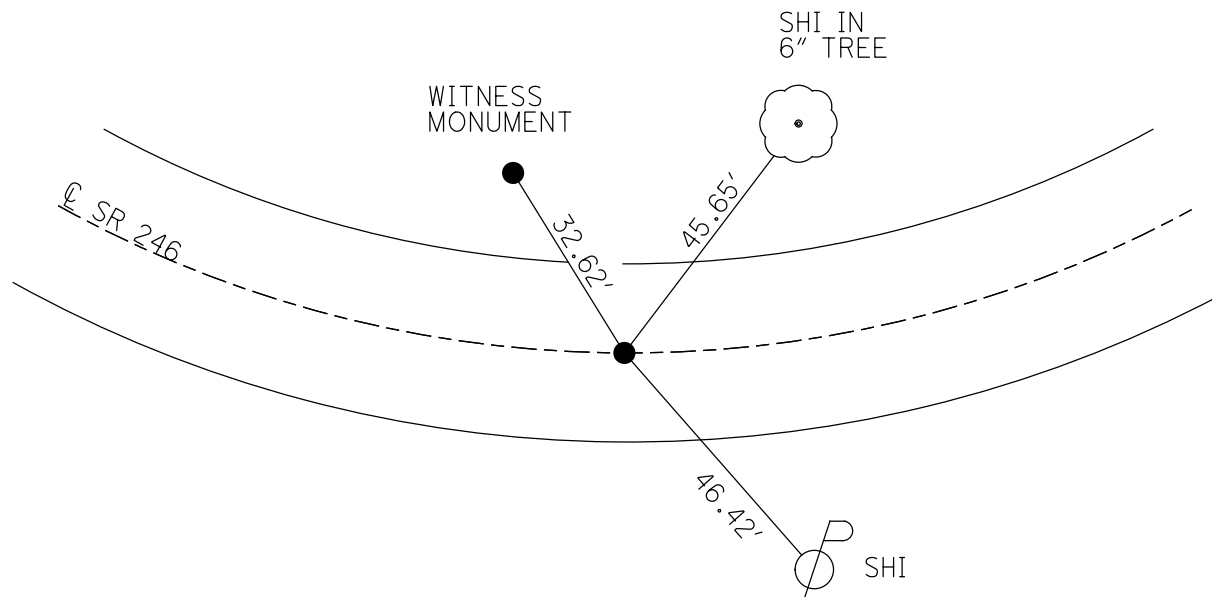
STATION: 52+65.24

HORZ. DATUM: _____ GEOID: _____

GRID: NORTHING: _____ EASTING: _____



RECORD: P.I.
 STA. 52+65.24
 $\Delta = 3^\circ 18' \text{ LT}$
 $D = 2^\circ 00'$
 $R = 2864.93$
 $L = 165.00'$
 1957 PLANS
 FD IPIN
 3/11/53
 FD BRASS MON
 2/25/66, WD



PERSONNEL	TITLE	PERSONNEL	TITLE	COUNTY	Lucas	DATE	Feb. 25, 1966
W. Dehno				S. R.	246	WEATHER	Sunny
D. Curtis				SEC.		TEMP.	26°
D. Granata				DESCRIPTION: S.R. 246 (Dorr St.) - Ref. Mon. & Control Points			
E. Omev				JOB NO. _____			

