

O.D.O.T. DISTRICT 2 SURVEY OFFICE (USE ONLY)

PERSONNEL

REFERENCE NO. 3

SHEET 3 OF 12

NOTES DENNO

DATE 2/25/66

ROUTE SR 246

H.C. CURTIS

WEATHER PARTLY CLOUDY

COUNTY LUCAS

R.C. GRANATA

TEMP. 26°

TOWNSHIP CITY OF TOLEDO

OMEY

SECTION 31

DWG BY NIESE PID _____

T 9 S R 7 E

TYPE MONUMENT BRASS MONUMENT

ON SURFACE - ~~BELOW~~ ON

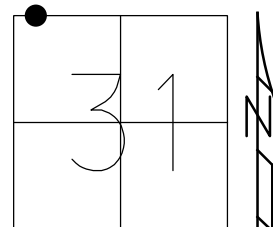
OFFSET ☉ PAVEMENT _____ LT : RT

- TO - EDGE PAVEMENT

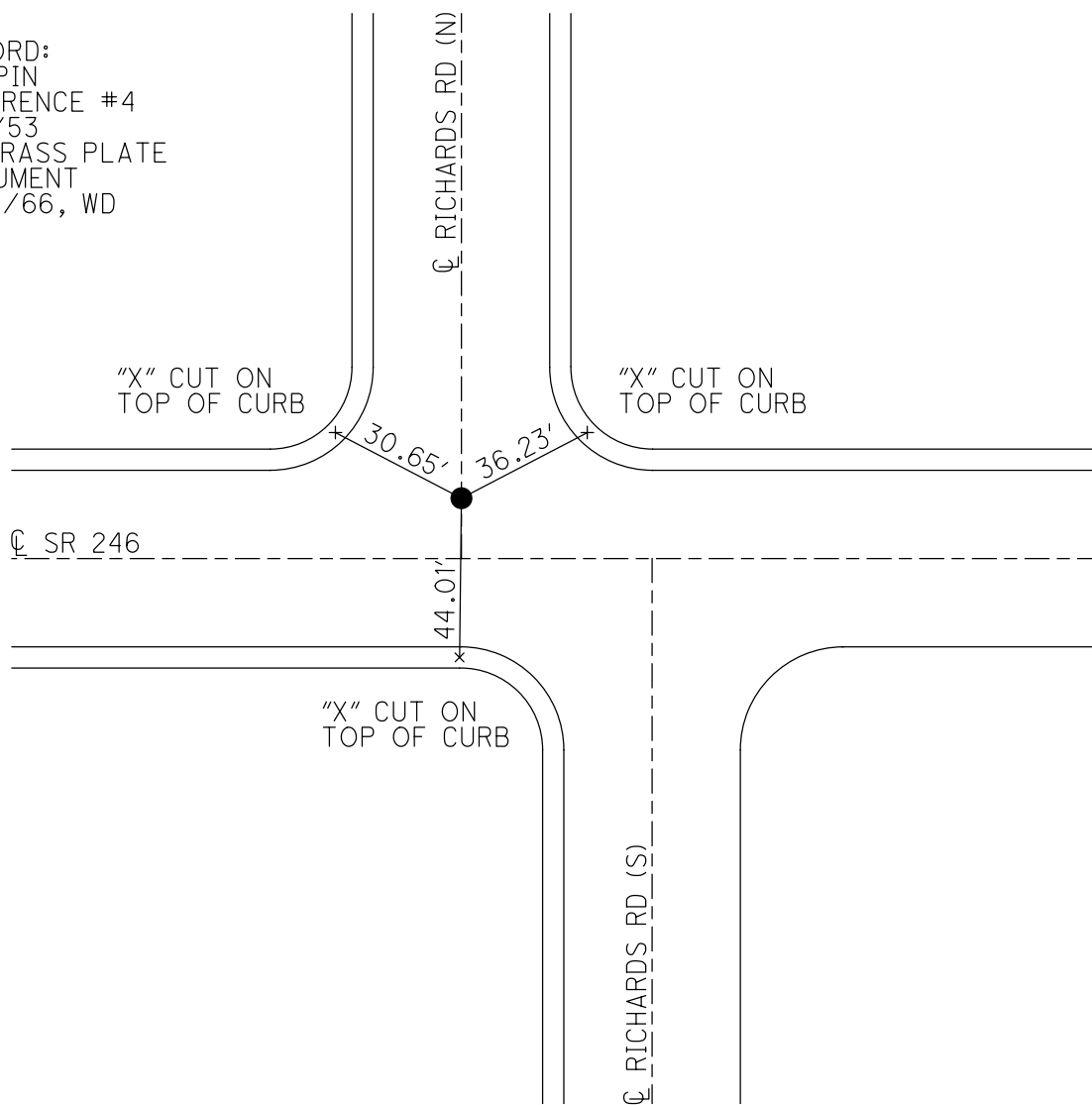
STATION: 64+42

HORZ. DATUM: _____ GEOID: _____

GRID: NORTHING: _____ EASTING: _____



RECORD:
FD IPIN
REFERENCE #4
3/11/53
FD BRASS PLATE
MONUMENT
2/25/66, WD



| PERSONNEL | TITLE | PERSONNEL | TITLE | COUNTY | DATE | WEATHER | TEMP |
|------------|-------|-----------|-------|-----------|---------------|---------------|------|
| W. Denno | | | | Lucas | Feb. 25, 1966 | Partly Cloudy | 26° |
| D. Curtis | | | | S. R. 246 | | | |
| D. Granata | | | | | | | |
| E. Omev | | | | | | | |

DESCRIPTION: S.R. 246 (Dorr St.) - Ref. Mon. & Control Points

