

O.D.O.T. DISTRICT 2 SURVEY OFFICE (USE ONLY)

PERSONNEL

REFERENCE NO. 6

SHEET 7 OF 12

NOTES BURNSIDE DATE 12/18/79
 H.C. BOWERS WEATHER CLEAR
 R.C. CURTIS TEMP. 20°
NEUSER/MICHALAK

ROUTE SR 246
 COUNTY LUCAS
 TOWNSHIP CITY OF TOLEDO
 SECTION 31
 T 9 S R 7 E

DWG BY NIESE PID _____

TYPE MONUMENT BRASS MONUMENT

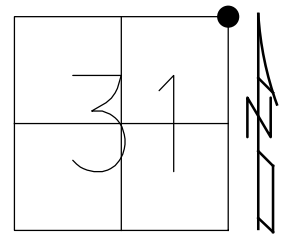
~~ON SURFACE~~ - BELOW 2"

OFFSET ☉ PAVEMENT _____ LT : RT
 _____ TO _____ EDGE PAVEMENT

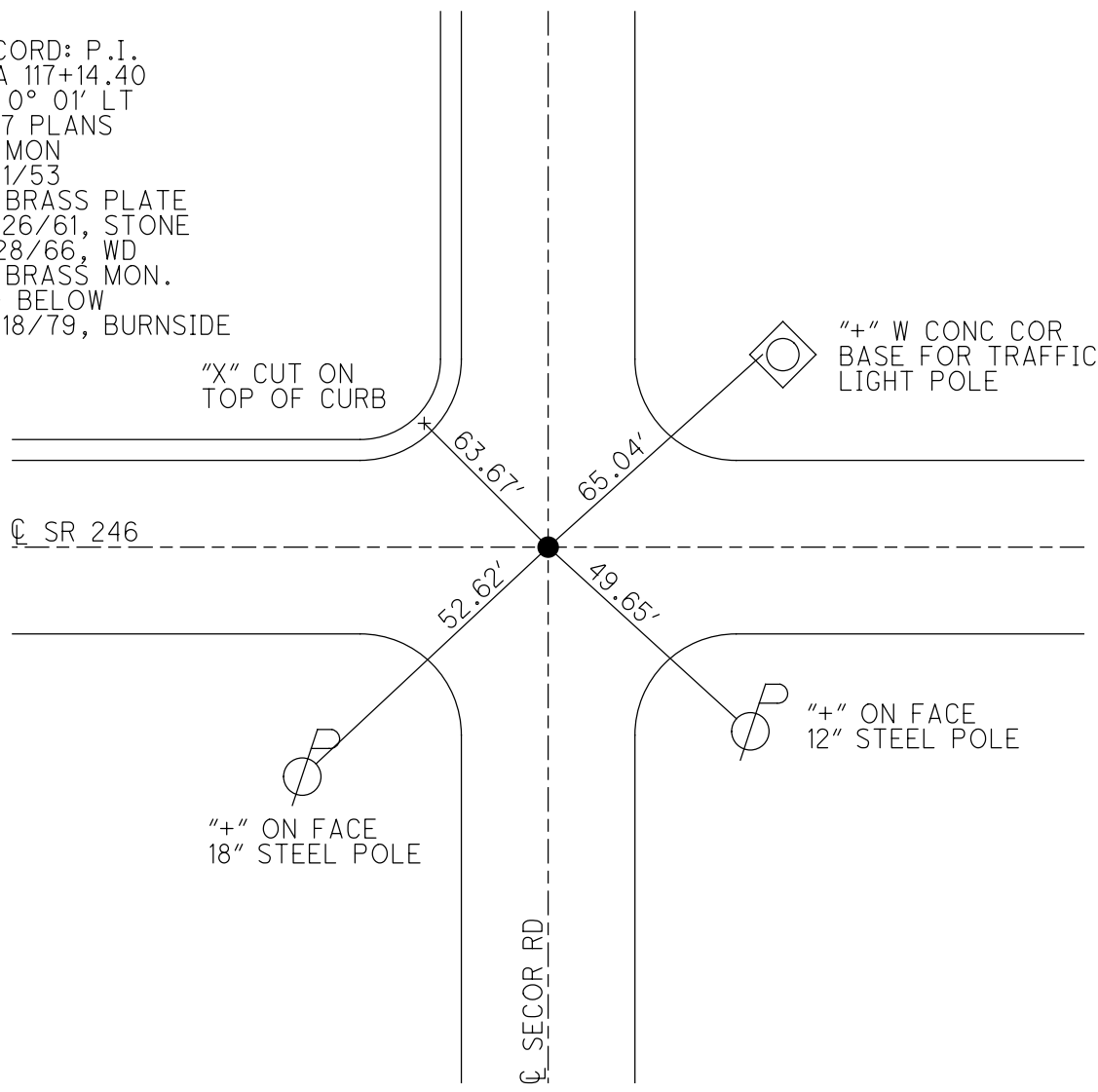
STATION: 117+21.6

HORZ. DATUM: _____ GEOID: _____

GRID: NORTHING: _____ EASTING: _____



RECORD: P.I.
 STA 117+14.40
 $\Delta = 0^\circ 01' \text{ LT}$
 1957 PLANS
 FD MON
 3/11/53
 FD BRASS PLATE
 12/26/61, STONE
 2/28/66, WD
 FD BRASS MON.
 2"+ BELOW
 12/18/79, BURNSIDE



County LUCAS S.R. 246

Date 12-18-79

Township _____

Weather CLEAR

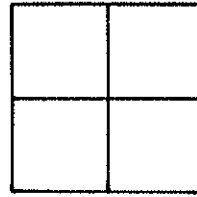
Section _____

Temp. +20°

T_N, R_E

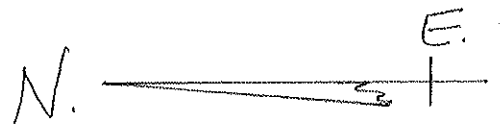
Personnel BURNSIDE
BOWERS
CURTIS
NEUSER
MICHALAK

6



FD BRASS MON 2" BELOW SURFACE

246



" W. COR. CONC. BASE FOR TRAFFIC LIGHT POLE

65.04'

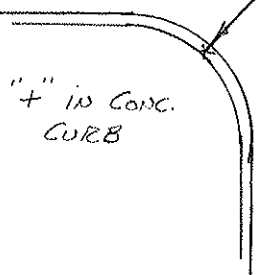
" FACE 12" STEEL POWER POLE

49.65'

SECOR ROAD (NORTH)

SECOR RD. (SOUTH)

63.67'



" ' IN CONC. CURB

S.R. (DARR ST.)

52.62'

" FACE 18" STEEL POWER POLE

S.R.

PERSONNEL	TITLE	PERSONNEL	TITLE	COUNTY	DATE	WEATHER	TEMP.
W. Denno				Lucas	Feb. 28, 1966	Cloudy	36°
D. Curtis				S. R. 246			
D. Grandia							
E. Orney							

DESCRIPTION: S.R. 246 (Dorr St) - Ref Mon. & Control Points

