

O.D.O.T. DISTRICT 2 SURVEY OFFICE (USE ONLY)

PERSONNEL _____

REFERENCE NO. 7

SHEET 8 OF 12

NOTES N/A

DATE 3/11/53

ROUTE SR 246

H.C. _____

WEATHER _____

COUNTY LUCAS

R.C. _____

TEMP. _____

TOWNSHIP CITY OF TOLEDO

DWG BY _____

PID _____

SECTION 32

T 9 S R 7 E

TYPE MONUMENT MONUMENT

ON SURFACE - BELOW - _____

OFFSET \varnothing PAVEMENT _____ LT : RT

_____ TO _____ EDGE PAVEMENT

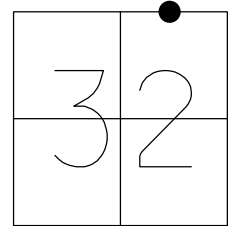
STATION: 156+28.8

HORZ.DATUM: _____

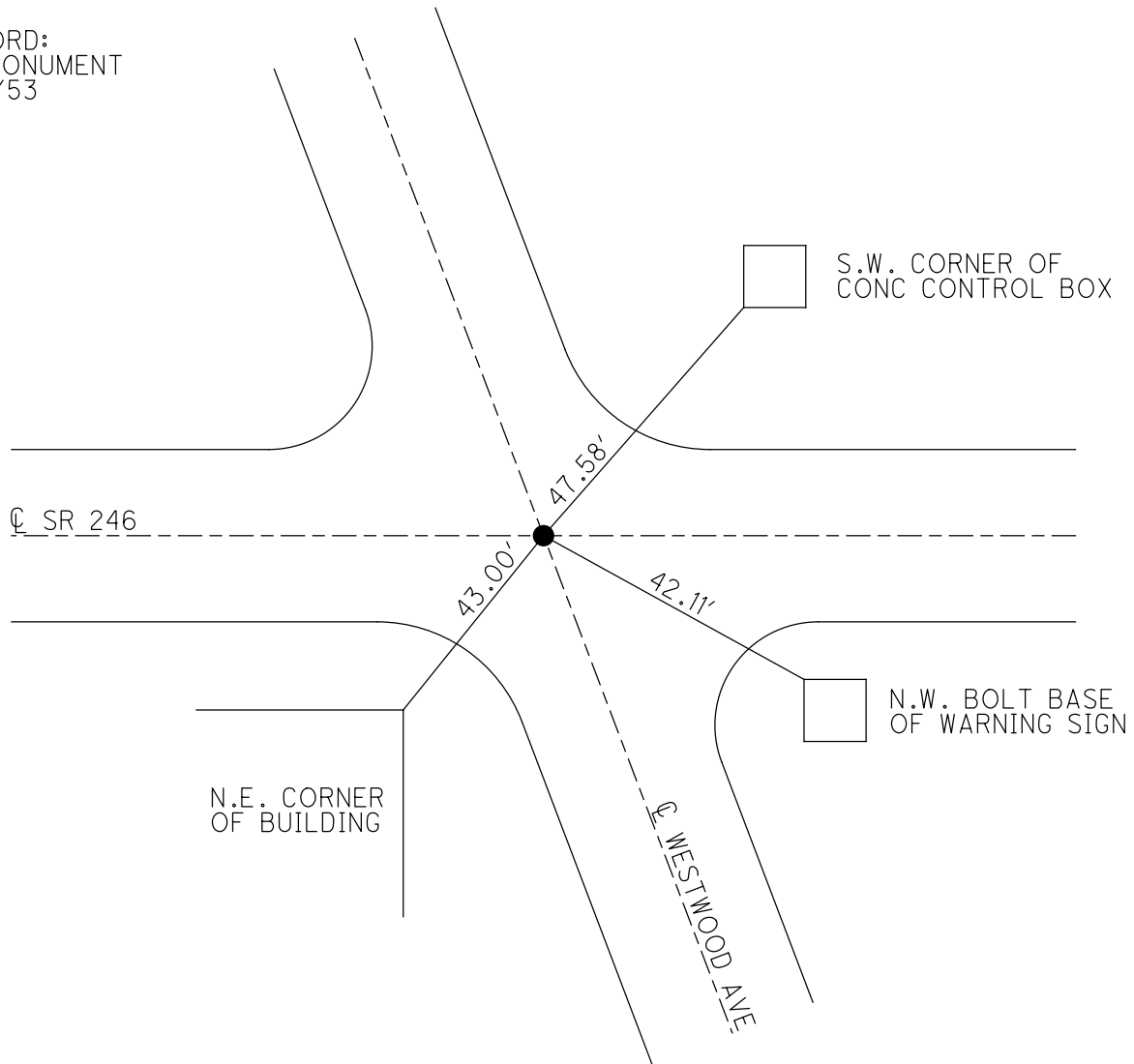
GEOID: _____

GRID: NORTHING: _____

EASTING: _____



RECORD:
FD MONUMENT
3/11/53



PERSONNEL TITLE PERSONNEL TITLE

COUNTY Lucas DATE

S. R. # 246 WEATHER

SEC. TEMP.

DESCRIPTION LEFT CENTER LINE RIGHT JOB NO.

Sta. 117+14.0
Secor Rd.
mon.
#8

#110

S.W. to shiner in P.P. 34.48'
N.W. to shiner in P.P. 46.96'
S.E. to shiner in P.P. 43.61'

Int. Westwood Ave. - South
mon.
#9

#111

S.W. to N.E. cor. of bldg. 43.00'
S.E. to N.W. bolt base of warning sign 42.11'
N.E. to S.W. cor. of conc. control box 47.58'