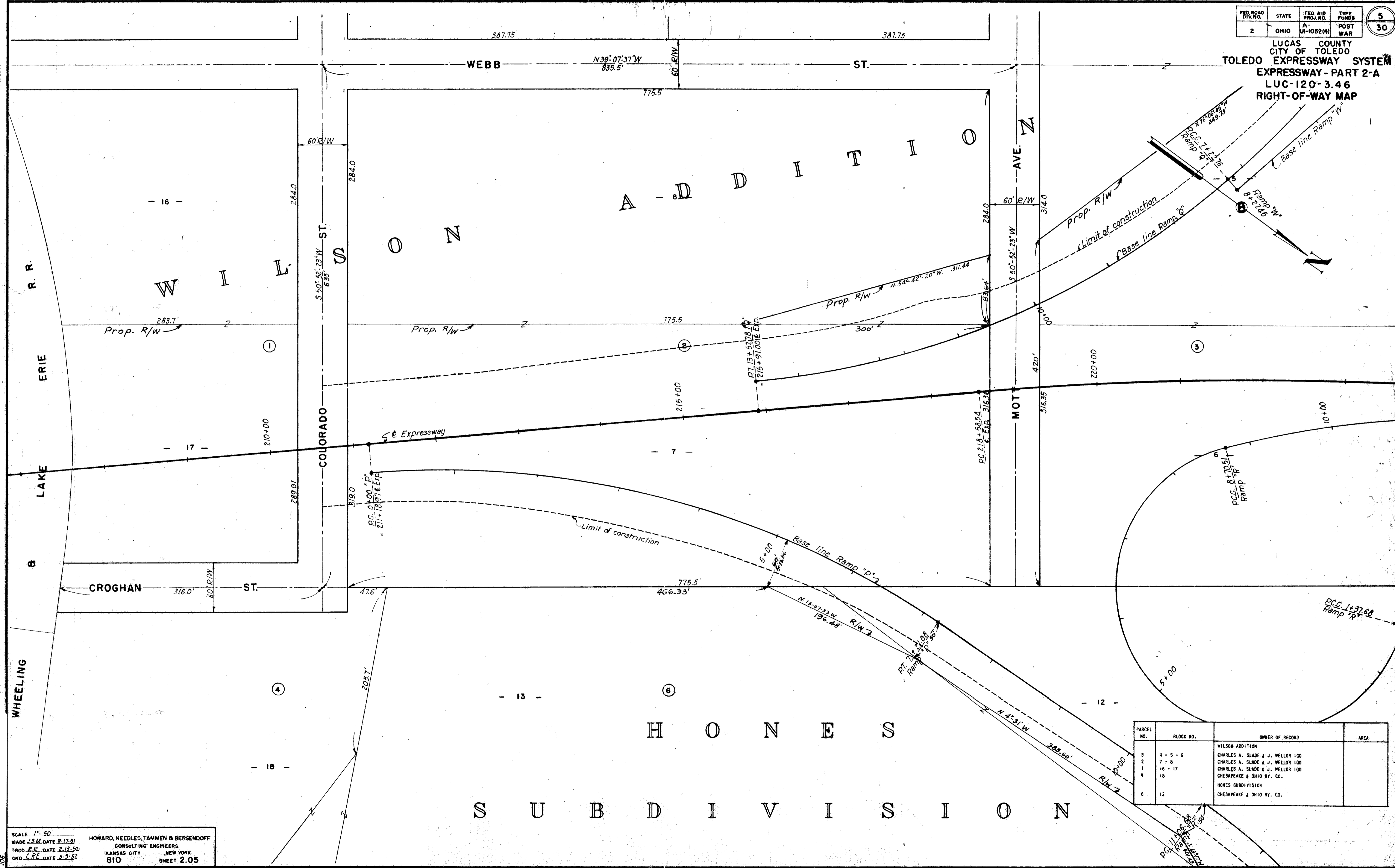


FED. ROAD DIV. NO.	STATE	FED. AID PROJ. NO.	TYPE FUNDS
2	OHIO	A-UI-1052(4)	POST WAR

5
30

LUCAS COUNTY
CITY OF TOLEDO
TOLEDO EXPRESSWAY SYSTEM
EXPRESSWAY - PART 2-A
LUC-120-3.46
RIGHT-OF-WAY MAP



PARCEL NO.	BLOCK NO.	OWNER OF RECORD	AREA
3	4 - 5 - 6	WILSON ADDITION	
2	7 - 8	CHARLES A. SLADE & J. WELLS 100	
1	16 - 17	CHARLES A. SLADE & J. WELLS 100	
4	18	CHARLES A. SLADE & J. WELLS 100	
6	12	CHESAPEAKE & OHIO RY. CO.	
		HONES SUBDIVISION	
		CHESAPEAKE & OHIO RY. CO.	

SCALE 1" = 50'
 MADE L.S.M. DATE 9-17-51
 TRCD S.R. DATE 2-13-52
 OKD C.R.E. DATE 2-5-52

HOWARD, NEEDLES, TAMMEN & BERGENDOFF
 CONSULTING ENGINEERS
 KANSAS CITY NEW YORK
 810 SHEET 2.05

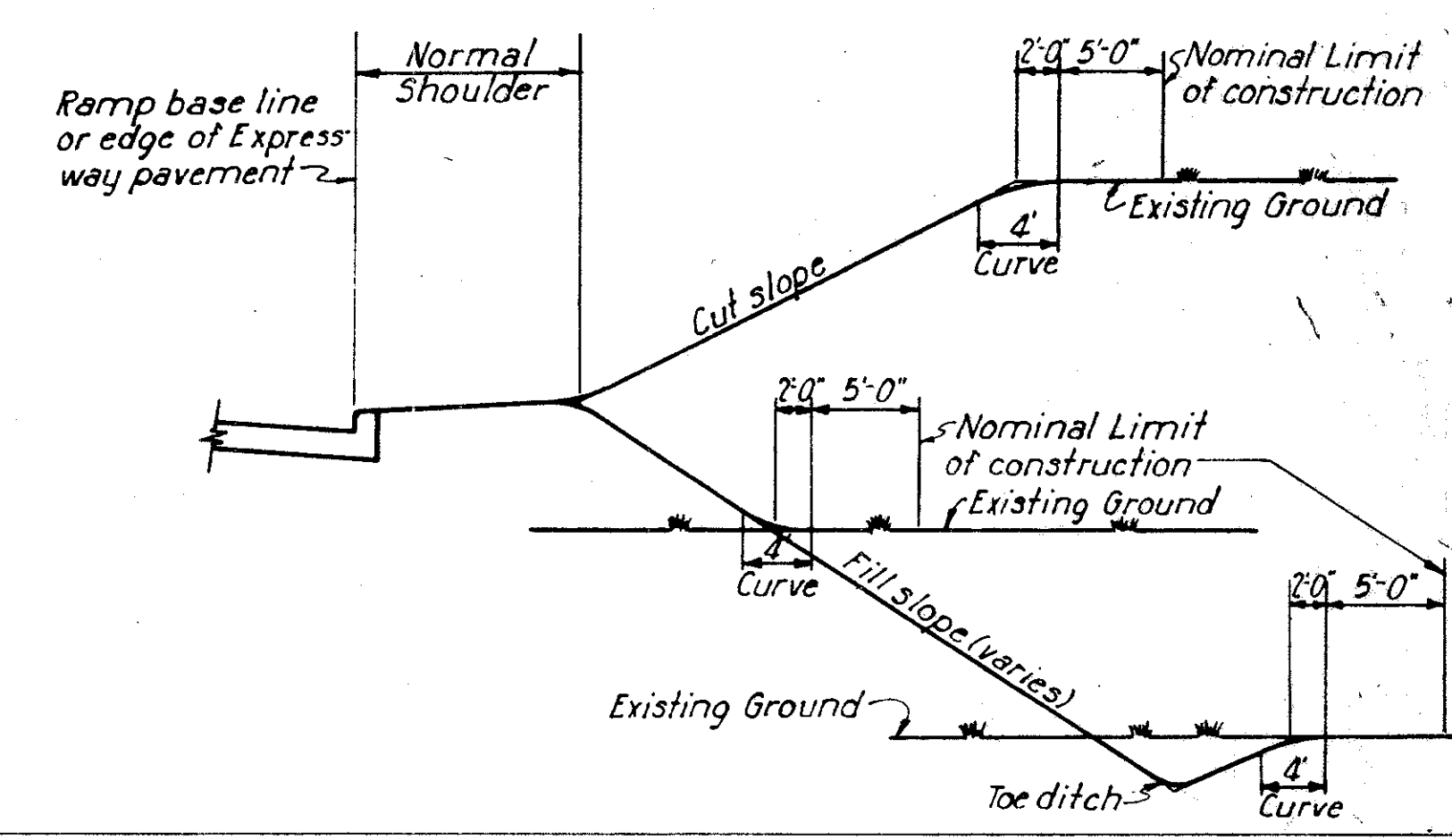
Scanned July 1997
 R-3280 #5 C-70
 902

FED. ROAD DIV. NO.	STATE	FED. AID PROJ. NO.	TYPE FUNDS	6
2	OHIO	A-UI-1052(4)	POST WAR	30

LUCAS COUNTY
CITY OF TOLEDO
TOLEDO EXPRESSWAY SYSTEM
EXPRESSWAY - PART 2-A
LUC-120-3.46
RIGHT-OF-WAY MAP

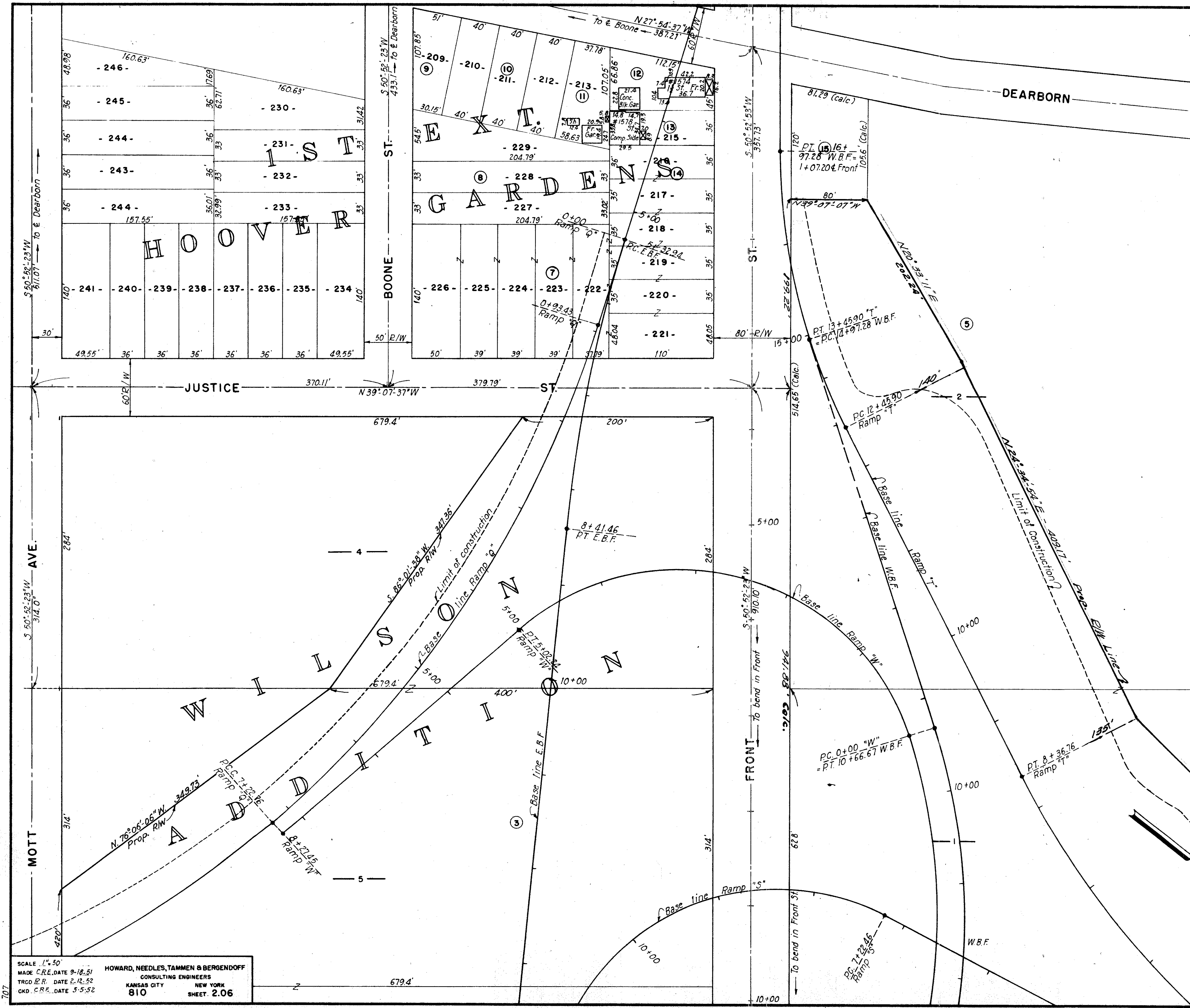
PARCEL NO.	SUB LOT NO.	OWNER OF RECORD	AREA
9	209	1st EXT. HOOVER GARDENS	
10	210 - 211 - 212	ROSE S. PETRO	
11	213	STEPHEN & JULIANA JACKSY	
12	214	PAUL GEORGE	
13	215	GEORGE A. & MARY GERDICH	
14	216 - 217	PAUL GEORGE	
7	218-219-220-221-222	GEORGE E. & HELEN REDD	
8	223-224-225-226	THE TOLEDO EDISON COMPANY	
	227 - 228 - 229	GEORGE E. & HELEN REDD	
3	4 - 5 - 6	WILSON ADDITION	
5	1 - 2 PT.	CHARLES A. SLADE & J. WELLDOR 100	
15	2 PT.	CITY OF TOLEDO	
		TOLEDO EDISON COMPANY	

* Refers to block numbers



BASIS FOR LIMITS OF CONSTRUCTION SHOWN
No Scale

—LEGEND—
"EBF" - East Bound Front St
"WBF" - West Bound Front St



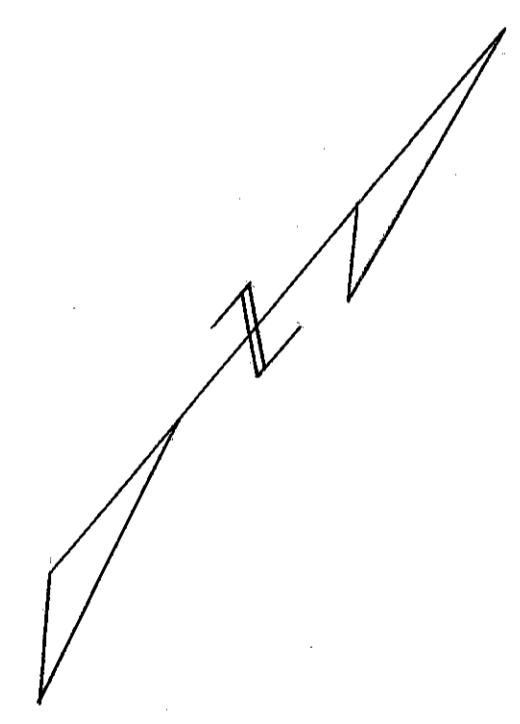
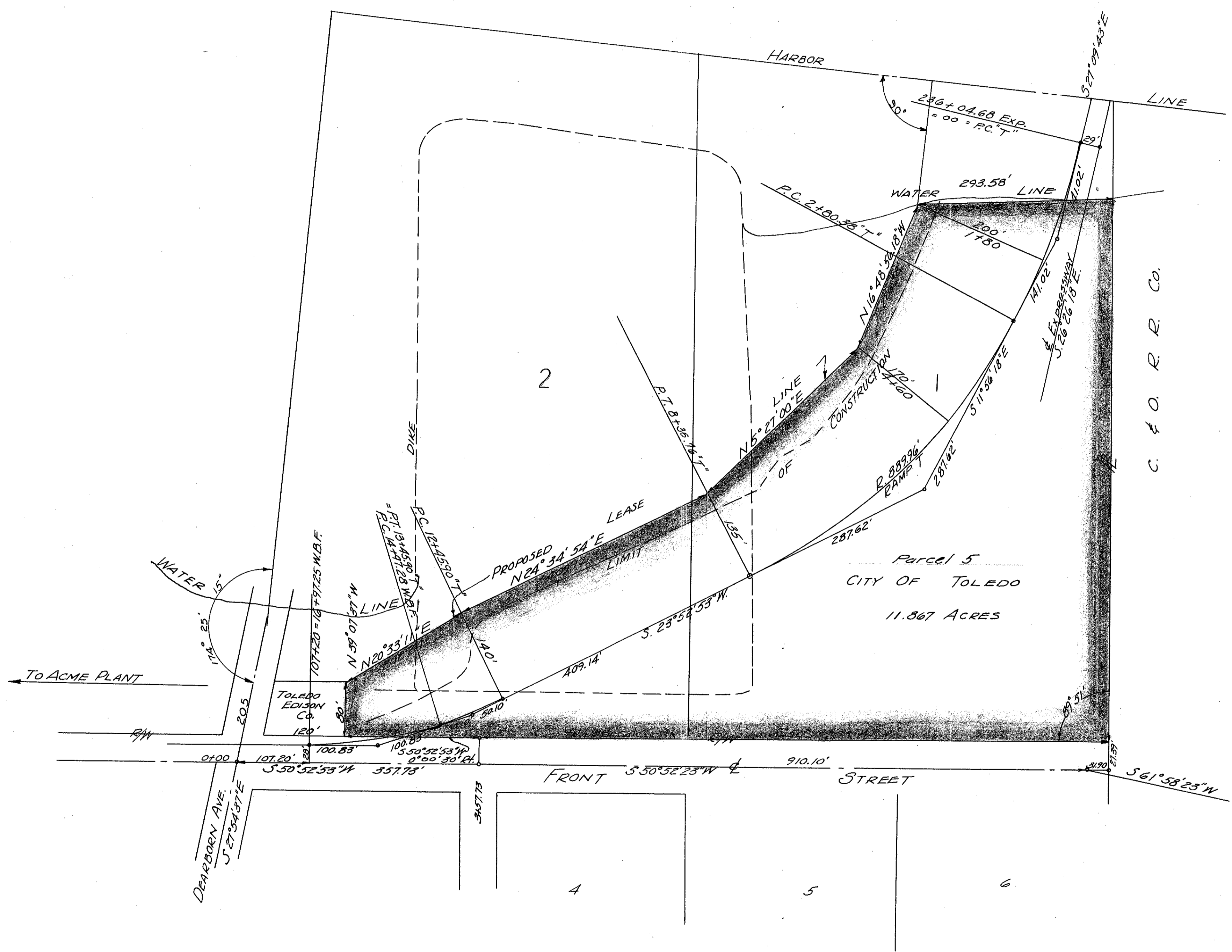
SCALE 1" = 50'
MADE C.R.E. DATE 9-18-51
TRCD R.R. DATE 2-12-52
OKD C.R.E. DATE 5-5-52

HOWARD, NEEDLES, TAMMEN & BERGENDOFF
CONSULTING ENGINEERS
KANSAS CITY NEW YORK
810 SHEET 2.06

Match Line See Sheet 7
Revised: 4/24/59

NO. 12	STATE	DISTRICT	
2	OHIO		

**CORRECTED PLAT OF
PROPOSED LEASE**
CITY OF TOLEDO TO TOLEDO EDISON CO.
1" = 100'
AUG 1952
BLOCKS 1 & 2 WILSON ADD'N.

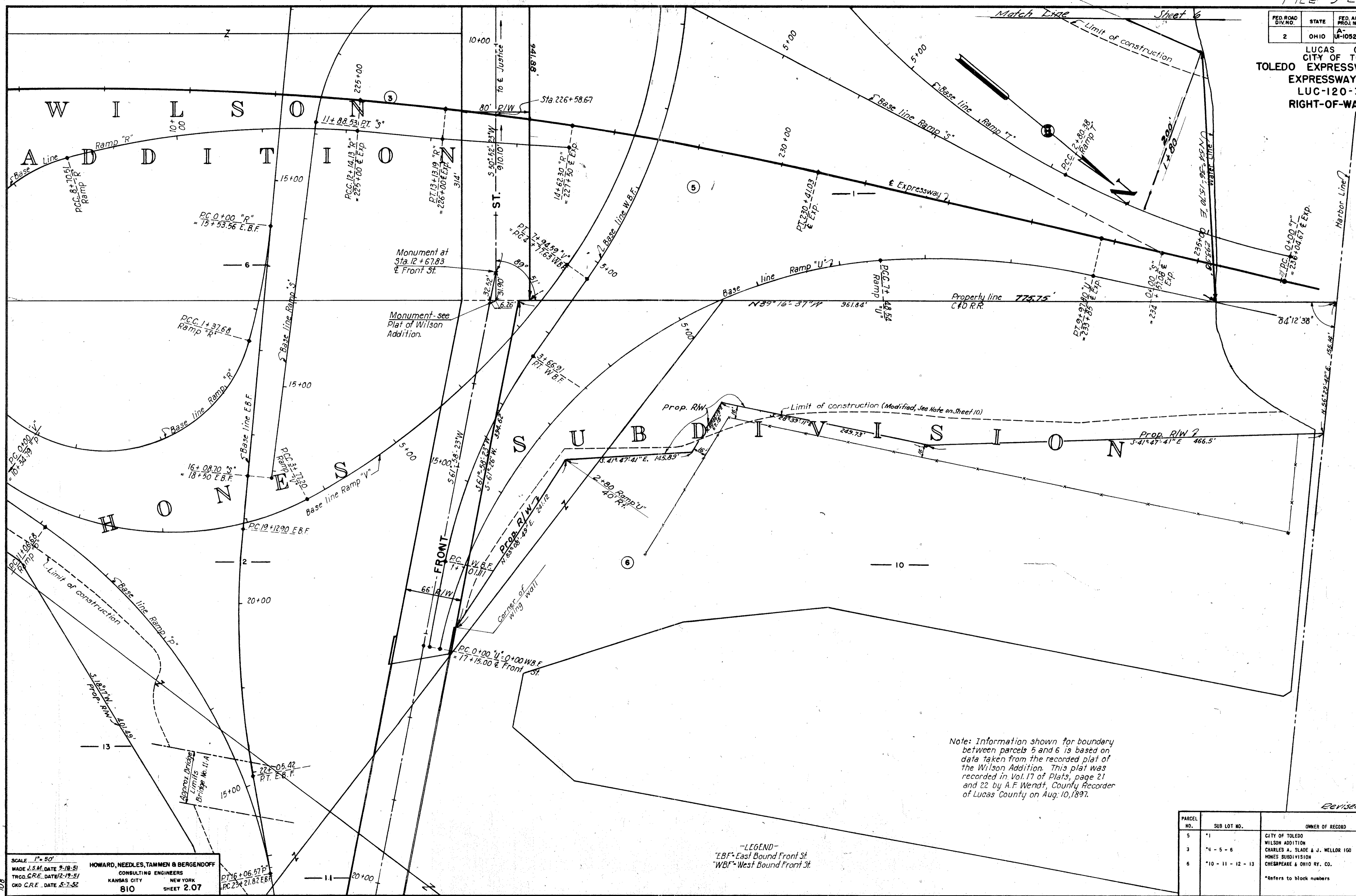


Scanned July 1997

FED. ROAD DIV. NO.	STATE	FED. AID PROJ. NO.	TYPE FUNDS
2	OHIO	A-1052(4)	POST WAR

7
30

LUCAS COUNTY
CITY OF TOLEDO
TOLEDO EXPRESSWAY SYSTEM
EXPRESSWAY - PART 2-A
LUC-120-3.46
RIGHT-OF-WAY MAP



Note: Information shown for boundary between parcels 5 and 6 is based on data taken from the recorded plat of the Wilson Addition. This plat was recorded in Vol. 17 of Plats, page 21 and 22 by A.F. Wendt, County Recorder of Lucas County on Aug. 10, 1897.

SCALE 1" = 50'
MADE J.S.M. DATE 9-18-51
TRCD. CRE. DATE 2-19-51
CKD. CRE. DATE 5-7-52

HOWARD, NEEDLES, TAMMEN & BERGENDOFF
CONSULTING ENGINEERS
KANSAS CITY NEW YORK
810 SHEET 2.07

-LEGEND-
"E.B.F." - East Bound Front St.
"W.B.F." - West Bound Front St.

Revised 4/24/59

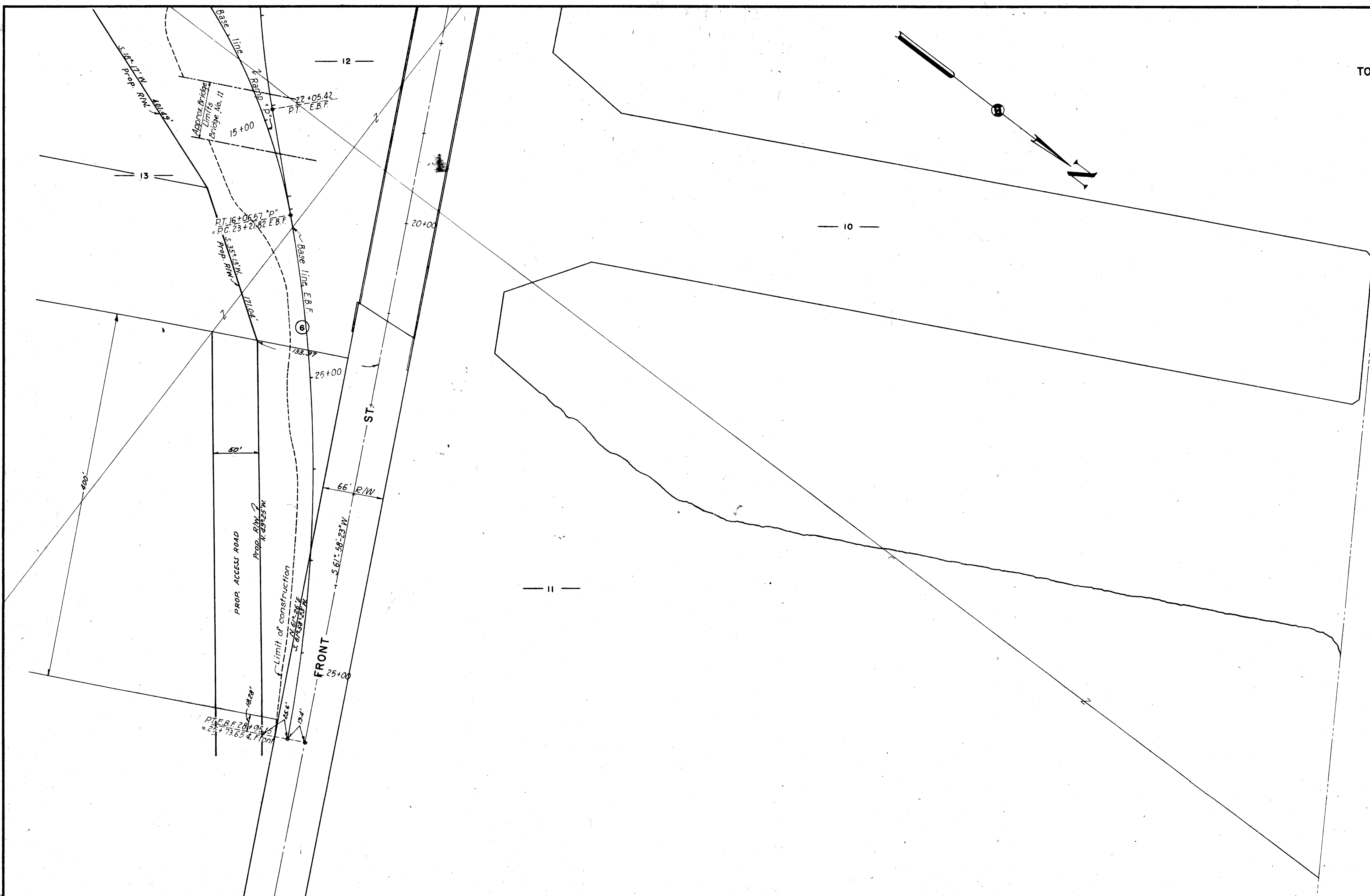
PARCEL NO.	SUB LOT NO.	OWNER OF RECORD	AREA
5	*1	CITY OF TOLEDO WILSON ADDITION	
3	*4 - 5 - 6	CHARLES A. SLADE & J. WELLS 100 HOMES SUBDIVISION	
6	*10 - 11 - 12 - 13	CHESAPEAKE & OHIO RY. CO.	

*Refers to block numbers

FED. ROAD DIV. NO.	STATE	FED. AID PROJ. NO.	TYPE FUNDS
2	OHIO	A-11-1052(4)	POST WAR

8
30

LUCAS COUNTY
CITY OF TOLEDO
TOLEDO EXPRESSWAY SYSTEM
EXPRESSWAY- PART 2-A
LUC-120-3.46
RIGHT-OF-WAY MAP



SCALE 1" = 50'
MADE I.S.M. DATE 9/19/51
TRCD R.R. DATE 2-13-52
CKD R.E.S. DATE 5-1-52

HOWARD, NEEDLES, TAMMEN & BERGENOFF
CONSULTING ENGINEERS
KANSAS CITY NEW YORK
810 SHEET 2.08

PARCEL NO.	BLOCK NO.	OWNER OF RECORD	AREA
6	10 - 11 - 12 - 13	HONES SUBD'N CHESAPEAKE & OHIO RY. CO.	

—LEGEND—
EBF = East Bound Front St.

709