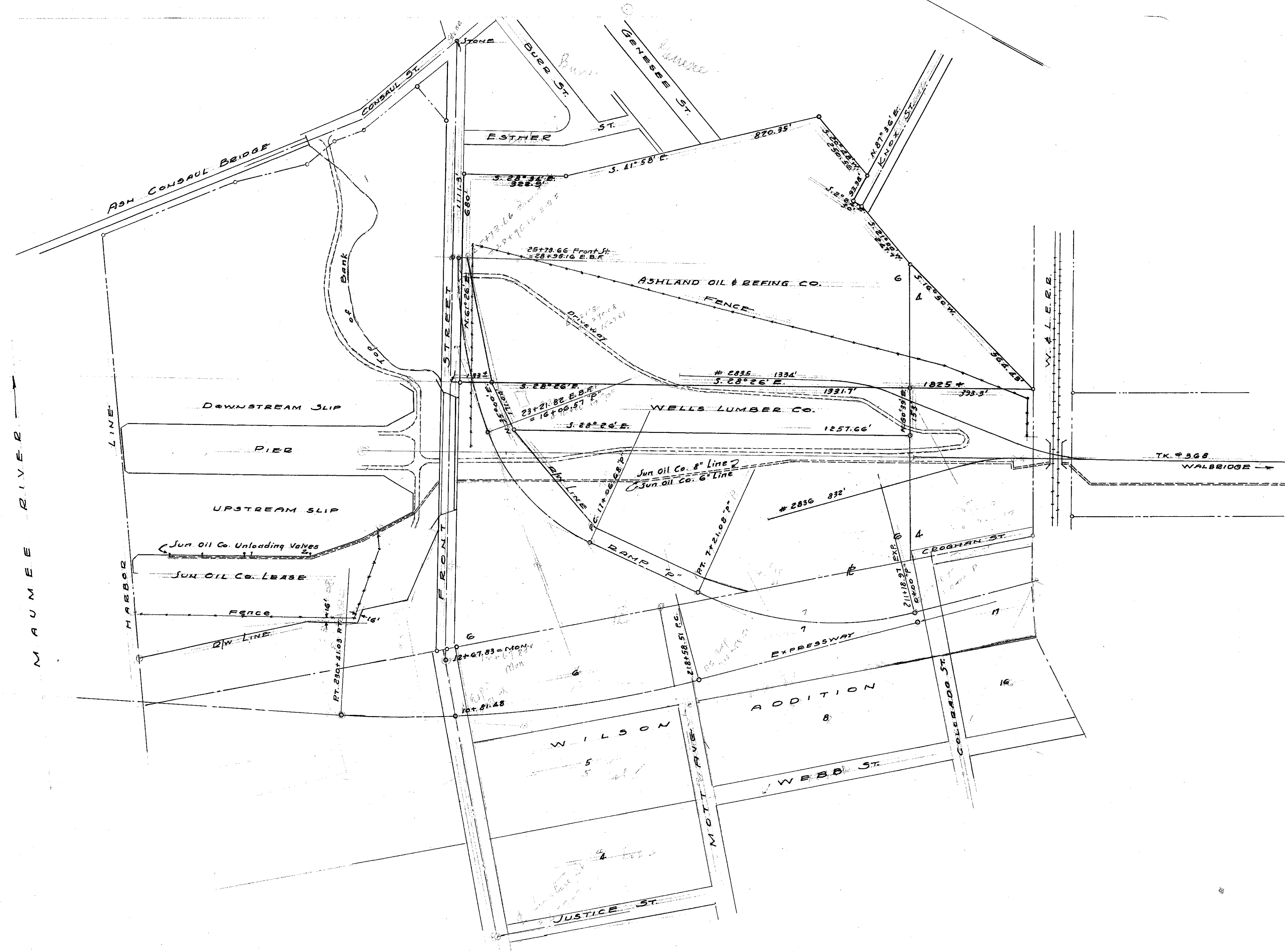


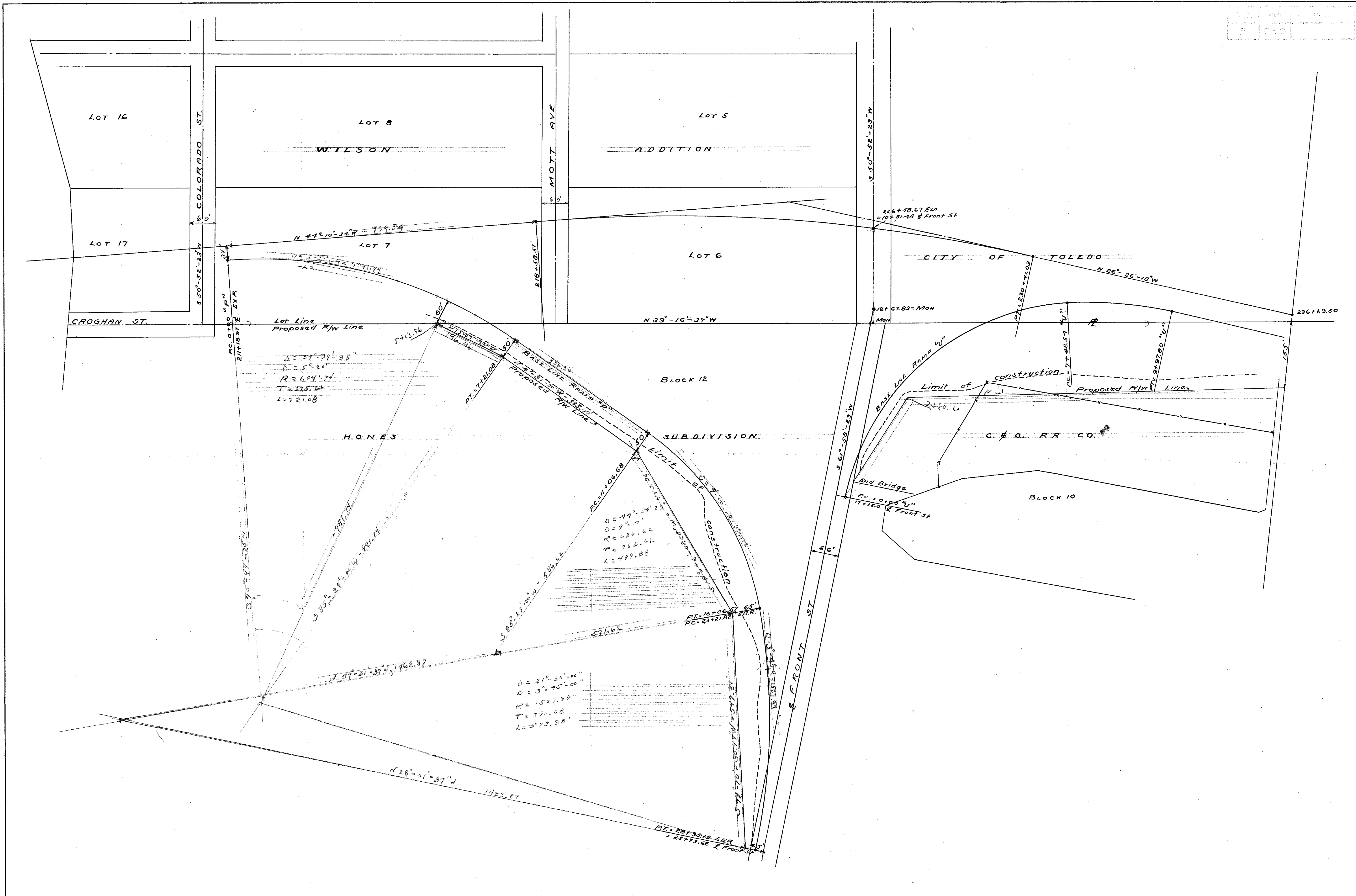
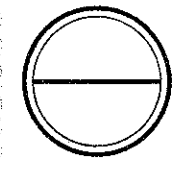
FED. RD. DIVISION	STATE	PROJECT	TYPE FUNDS
2	OHIO		



1201
1407

R-3280
C-4

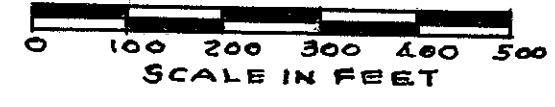
DATE	BY	SCALE	REV
2	CND		



50000
1/4" = 100'

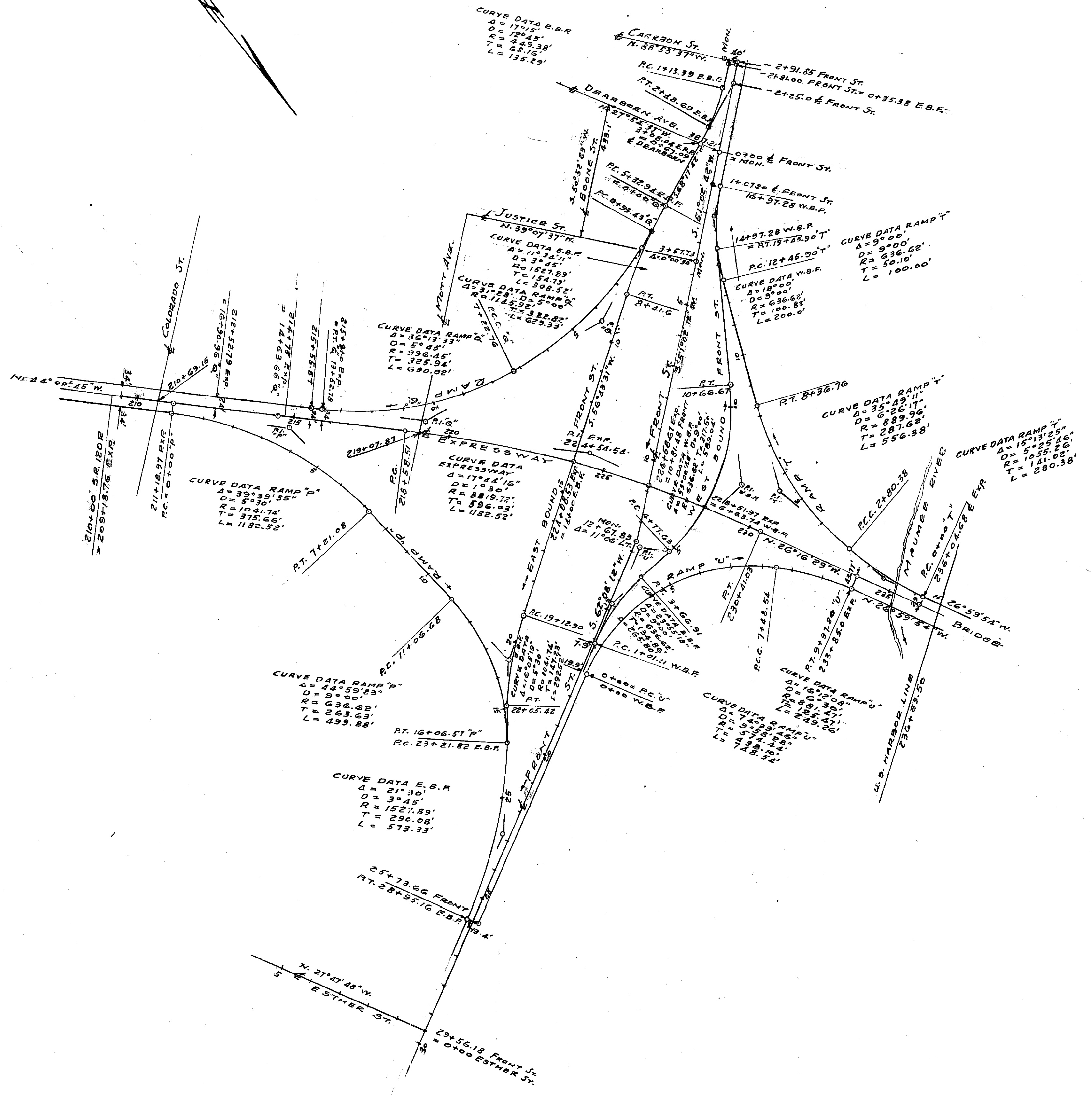
NO. 1	DATE	PROJECT	BY
2	1954		

LOCATION PLAN
LUC-120-3.00
TOLEDO EXPRESSWAY SYSTEM
EXPRESSWAY PART 4
LUCAS COUNTY - CITY OF TOLEDO
DEPARTMENT OF HIGHWAYS
STATE OF OHIO
FRONT STREET INTERCHANGE
1954



I hereby certify this to be a true and correct platting of the centerline of survey as determined by Howard, Needles, Tammen and Bergendoff, Consultants.

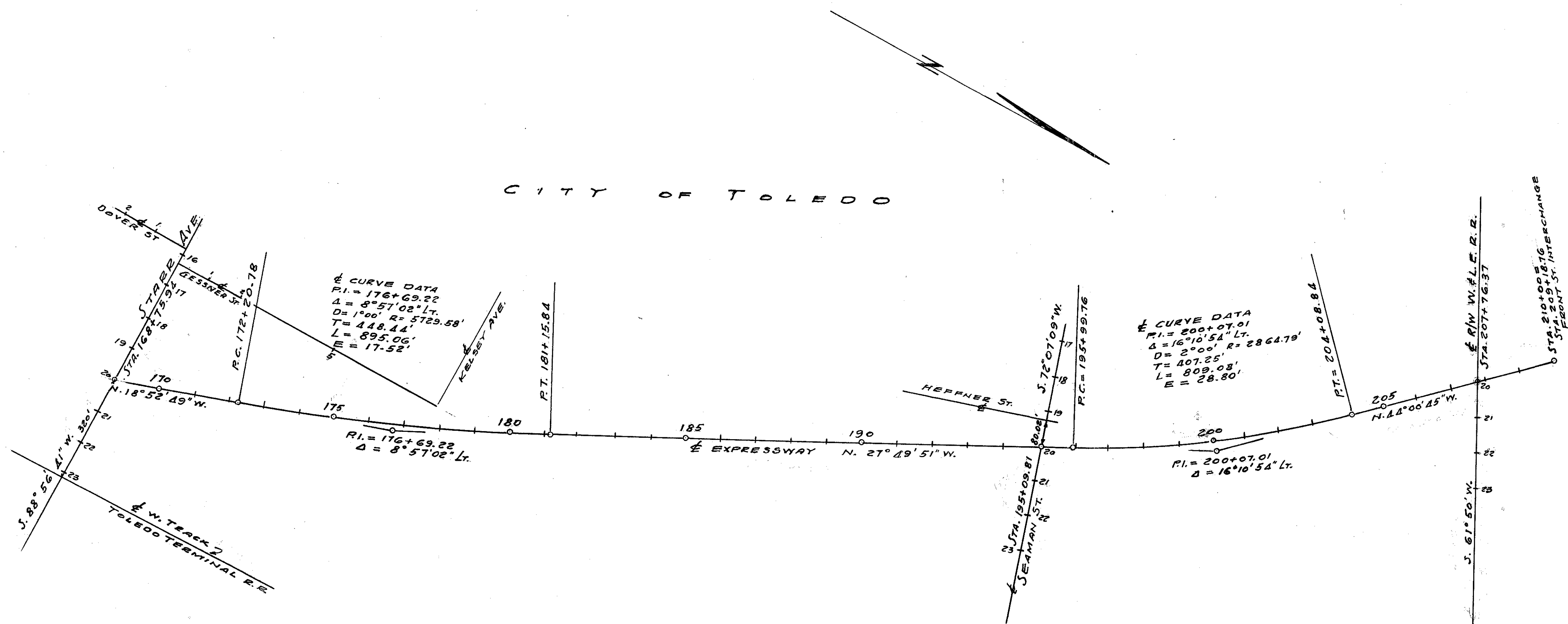
DATE: 3-8-54 *George W. Rubin*
DIVISION DEPUTY DIRECTOR



50000
50000

100040
109240

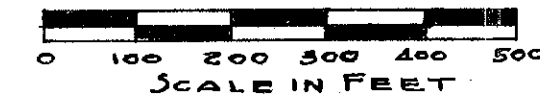
CITY OF TOLEDO



RECORDS OFFICE OF LARSEN COUNTY REC'D
 REBELVADIA RECORDED 9452 AM
 MAY 24 1954
 IN Vol. 52 PAGE 25 RECORDS
 Herald J. Cullen Recorder
 #7.70

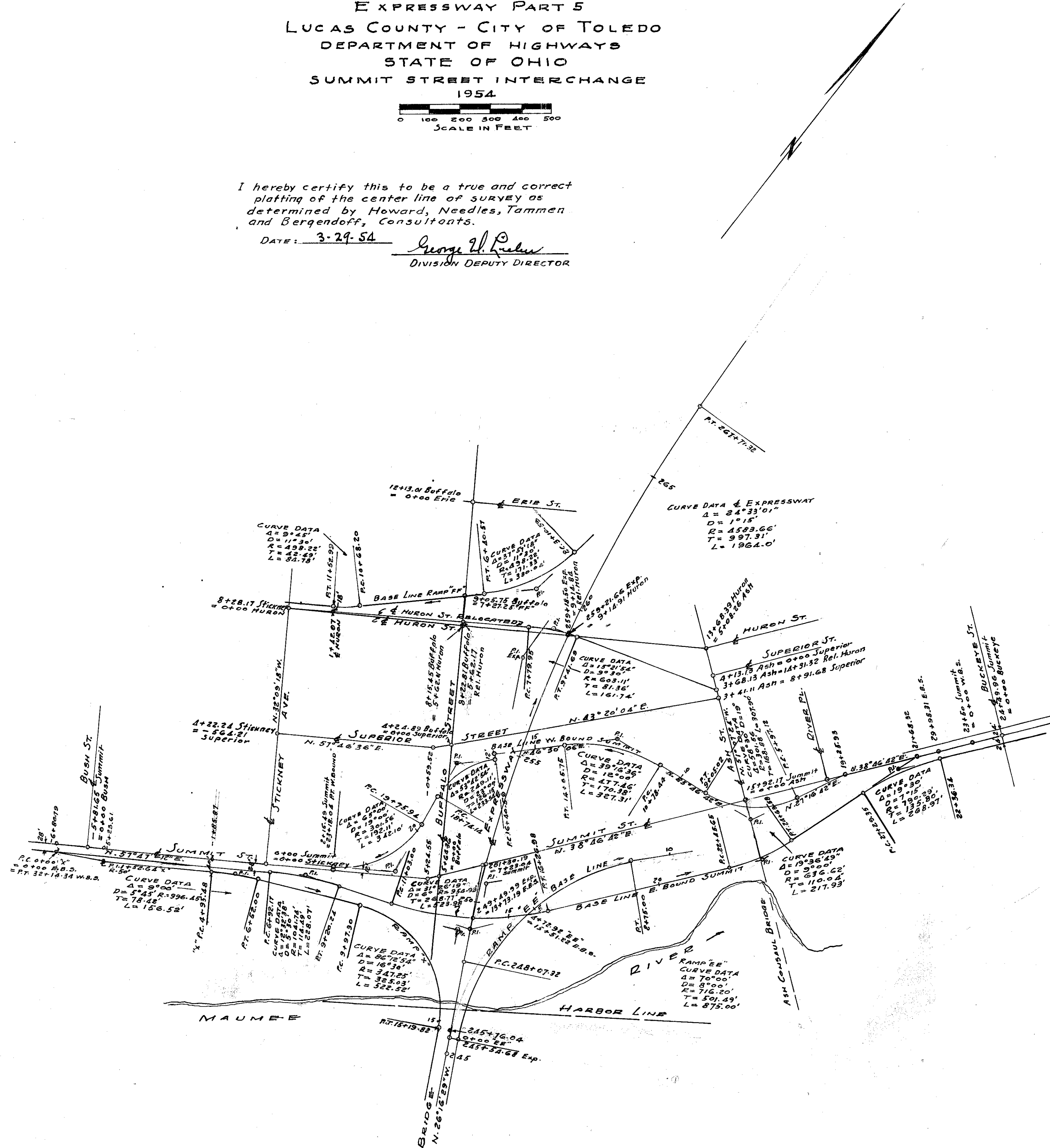
PROJECT	STATE	FILE
2	OHIO	

LOCATION PLAN
 LUC-120-3.79
 TOLEDO EXPRESSWAY SYSTEM
 EXPRESSWAY PART 5
 LUCAS COUNTY - CITY OF TOLEDO
 DEPARTMENT OF HIGHWAYS
 STATE OF OHIO
 SUMMIT STREET INTERCHANGE
 1954



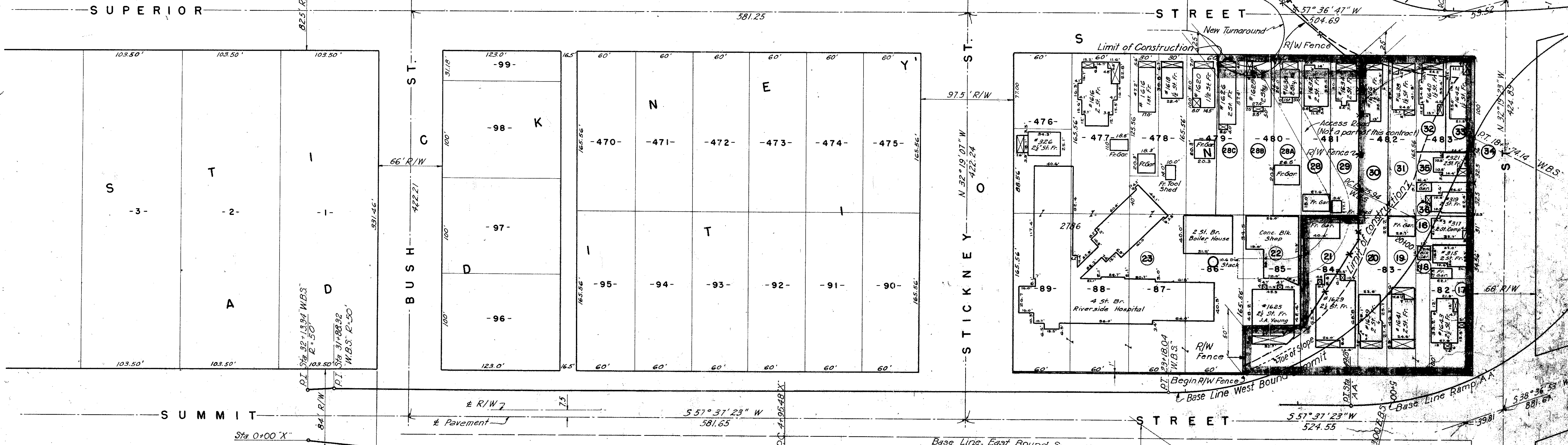
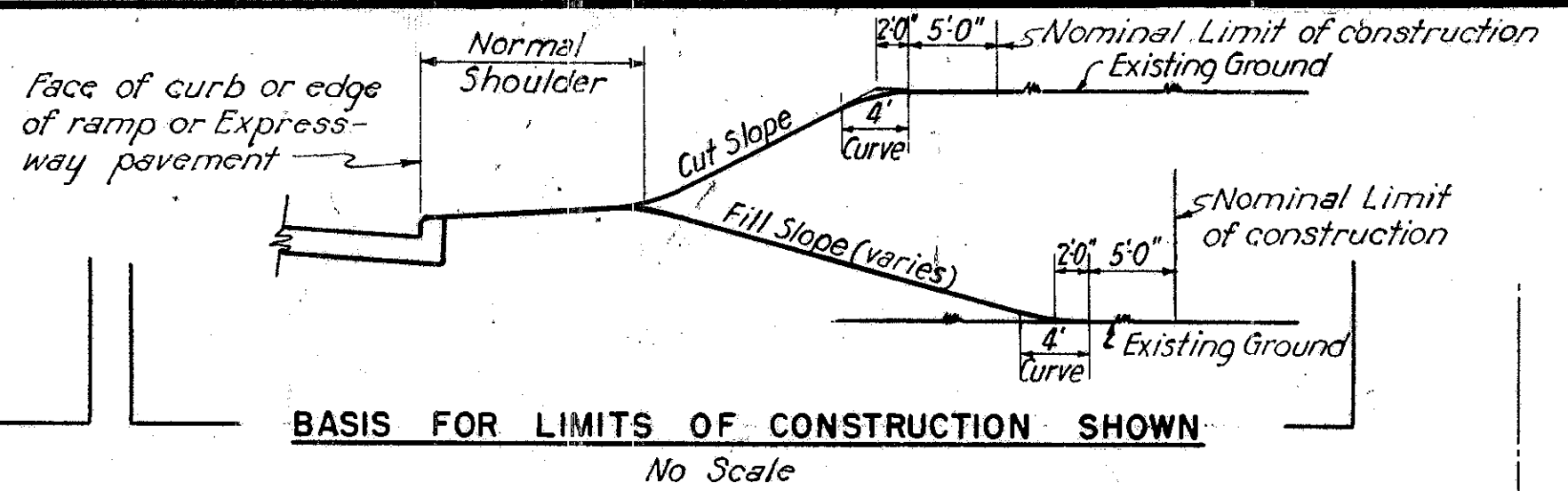
I hereby certify this to be a true and correct
 platting of the center line of survey as
 determined by Howard, Needles, Tammen
 and Bergendoff, Consultants.

DATE: 3-29-54
 George H. Reuber
 DIVISION DEPUTY DIRECTOR

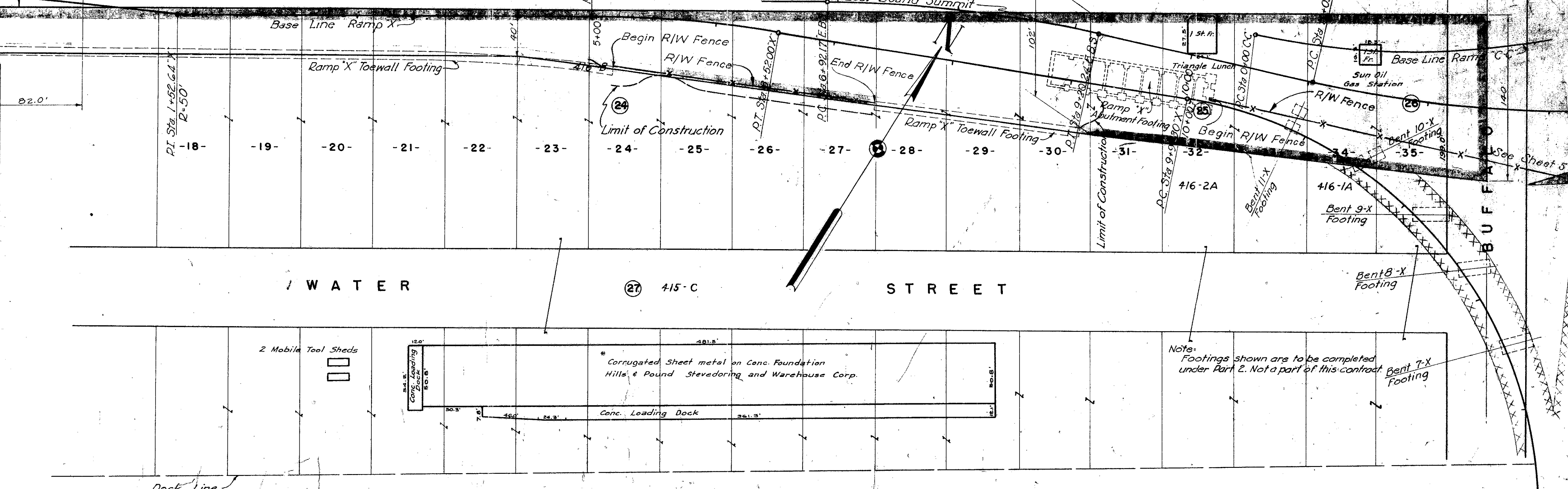


LUCAS COUNTY CITY OF TOLEDO TOLEDO EXPRESSWAY SYSTEM EXPRESSWAY-PART 5

RIGHT-OF-WAY MAP



PARCEL NO.	SUB LOT NO.	OWNER OF RECORD	AREA
16	82 PT.	STICKNEY'S ADDITION	
17	82 PT.	LUCY E. KARG	
18	82 PT.	SADIE PROLE	
19	82 PT. - 83 PT.	LAWRENCE G. RISE ETAL.	
20	83 PT.	GRACE E. GUSE	
21	84	ESTELLA FARWELL	
22	85	RUBY M. SPENCER	
23	86-87-88-89	SETH A. YOUNG	
24	476 PT. - 477-478 PT.	THE MATERNITY & CHILDRENS HOSPITAL (RIVERSIDE HOSPITAL)	
25	18 PT. TO INCL. 31 PT.	PENNA CO.	
26	32 PT. - 33 PT.	PENNA CO.	
27	34 PT. - 35 PT.	PENNA CO.	
28	481 PT.	PENNA CO.	
29	481 PT.	RUSSELL E. & FONTELLA DUTTEFFER	
30	482 PT.	THE MISSIONARY BOARD OF THE LUTHERAN SYNODICAL CONFERENCE	
31	482 PT.	MARY E. MC LEAN	
32	483 PT.	LILLIAN B. MANORNEY LITCHIE	
33	483 PT.	ANNA L. BURROW	
34	483 PT.	FRANCIS B. SLOAN	
35	483 PT.	GEO. D. PALMER	
36	483 PT.	HAZEL M. FISHER	
28A	480 PT.	ROSCOE M. & MARY J. MC BRIDE	
28B	480 PT.	ALBERT & EVA JANE SABA	
28C	480 PT.	HAZEL SCHENKHAUER	
28C	479 PT.	THOMAS E. & RUBY E. RILEY & FRANKLIN E. & MARY RILEY	



LUCAS COUNTY CITY OF TOLEDO TOLEDO EXPRESSWAY SYSTEM EXPRESSWAY-PART 5

RIGHT-OF-WAY MAP



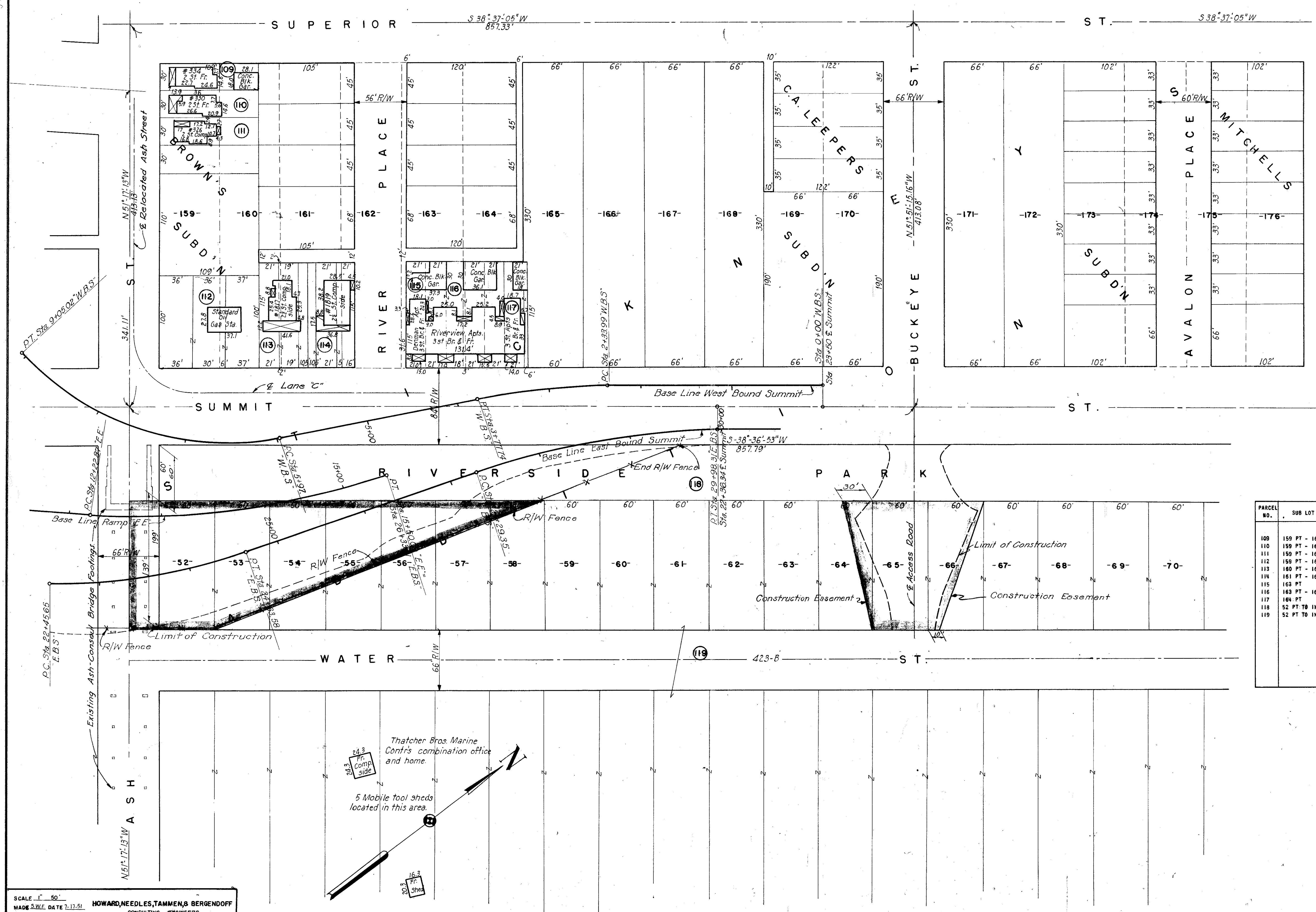
PARCEL NO.	SUP LOT NO.	OWNER OF RECORD	AREA
37	486 PT.	STICKNEY'S ADDITION	
38	486 PT.	ANCELA KOLASHINSKI	
39	486 PT.	ANTHONY J. & MATTIE LUELLA ECKHART	
40	486 PT.	FREDRICK J. & MAZEL MARGARETTE FISHER	
41	485 PT.	HAUDE LESSEURE	
42	485 PT., 486 PT.	ELIZABETH HARGUARDT	
43	487 PT., 485 PT.	CHARLES W. SEMA	
44	487 PT., 485 PT.	ELZA E. & MARLE T. SELLERS	
45	488 PT.	HARLEY J. & ROSE W. BRONN	
46	488 PT., 489 PT.	DELOY E. & FRANCES E. MEDHING	
47	485 PT.	PAULINE RAGEY	
48	490 PT.	LILLIAN SELEERO	
49	490 PT.	GERTRUDE J. & GEORGE W. PRICE	
50	491	NICHOLAS G. FRIESEN	
51	492 PT.	MAIDA W. FRANCIS	
52	492 PT.	JOHN L. HACK	
53	493 PT.	LOUISE KEMPF	
54	493 PT.	CATHARINE H. VALLELY	
55	494 PT.	LENA HASON	
56	494 PT.	LILLIAN A. HENNESSY	
57	495 PT.	JOHN J. & IME C. VALLELY	
58	496 PT., 495 PT.	MELVIN & AICHA GANDOH	
59	496 PT.	ESTHER & OLEN STRATTAN	
60	497	GORDON G. & AGNES GREY	
61	498	CLOYD B. FELLABAHN	
62	499 PT.	RALPH W. JER	
63	499 PT.	JESSIE M. SLY	
64	500-1	ALBERT & LOUISE LUCARELLI	
65	2-3	EWING'S SUB'DN	
66	4-5	LESTER W. & JOSEPH HADDAD	
67	6 PT.	ALBERT & LOUISE LUCARELLI	
68	6 PT., 7 PT.	PURE OIL PRODUCTS CO.	
69	7 PT.	CATHERINE DELANEY CULLEN	
70	7 PT., 8 PT.	HARLEY W. & MELLE M. BURT	
71	8 PT.	ERNEST J. & ETTA R. BRAATZ	
72	9 PT., 10 PT.	FRANK J. & ANNA D. DAVID	
73	9 PT., 10 PT.	JOHN ELSPERMAN	
74	9 PT., 10 PT.	ADAM & FLORENCE E. BOLBACH	
75	9 PT., 10 PT.	THELMA & BALLARY PERKINS	
76	10 PT.	ALSINDA FRANCES BARTLETT	
77	36 PT.	NORMAN & MARY DRAFTON	
78	36 PT., 37 PT.	DAN & ANN SAHERFIELD	
79	37 PT.	STICKNEY'S ADDITION	
80	36 PT., 37 PT.	ESTELLA GIBB FARWELL	
81	38 PT., 39 PT.	MARY HENDRICKS DREW	
82	39 PT., 40 PT.	HARRY D. SARGENT	
83	38 PT., 39 PT., 40 PT.	PENNA CO.	
84	41	KARAVAN COFFEE CO.	
85	42 PT.	GASSER COFFEE CO.	
86	42 PT., 43 PT.	PENNA CO.	
87	43 PT.	CONTINENTAL COFFEE CO.	
88	42 PT., 43 PT.	DANA BECKETT	
89	44 PT.	FAY KNUDSEN	
90	44 PT. TO INCL 48 PT.	WILDA A. HAYWARD	
91	45 PT. TO INCL 48 PT.	MARY FRANCES MCGOWAN	
92	45 PT.	PENNA OHIO & DET. R.R.	
93	45 PT.	LUTIFE & SHALHOUP CORP.	
94	45 PT.	PENNA OHIO & DET. R.R.	
95	45 PT.	LLOYD & GERALDINE WRIGHT	
96	45 PT.	ELVA HYERS	
97	45 PT., 50 PT.	LORLE D. DICKEY & HAZEL D. DRAPER	
98	50 PT., 51 PT.	ARTHUR R. CLINE	
99	51 PT.	GULF REF. CO.	
100	49 PT., 50 PT., 51 PT.	LORLE D. DICKEY & HAZEL D. DRAPER	
101	79 PT.	C. B. DETWILER	
102	79 PT.	PENNA CO.	
103	80 PT.	PENNA CO.	
104	80 PT., 81 PT.	PENNA ST.	
105	81 PT.	HARRY LAIDLEY	
106	81 PT.	LILLIAN B. CRIDER	
107	81 PT.	CARL J. & IRVINE TICKE	
108	81 PT.	THEODORE & VIOLET ZIEHR	
		LOUISE CARR & CHARLOTTE SCHUBERT DOUGHERTY	
		LILLIAN G. GELEERO	
		TILLIE A. BRIGGS	
		JOSEPH RAPP	

LEGEND
 Br - Brick
 Fr - Frame
 Sh - Shingle
 St - Story
 Conc. Blk - Concrete Block
 Im - Imitation
 ☒ - Porch

Scanned July 1997

LUCAS COUNTY
 CITY OF TOLEDO
 TOLEDO EXPRESSWAY SYSTEM
 EXPRESSWAY-PART 5

RIGHT-OF-WAY MAP



PARCEL NO.	SUB LOT NO.	OWNER OF RECORD	AREA
		BROWN'S SUBD'N	
109	159 PT - 160 PT	RAY E. RICHMOND	
110	159 PT - 160 PT	EMMA & HILDA & M. HABEL SMITH	
111	159 PT - 160 PT	HARRY E. & OLIVE L. BAILS	
112	159 PT - 160 PT	STANDARD OIL CO.	
113	160 PT - 161 PT	NOBLE M. & FLORENCE FREEMAN	
114	161 PT - 162 PT	RALPH & MOLLIE STROUD	
115	162 PT	BLANCHE ROSENBLATT	
116	163 PT - 164 PT	VIOLET M. MILLER	
117	164 PT	VIOLET M. MILLER	
118	52 PT TO INCL 78 PT	CITY OF TOLEDO (RIVERSIDE PARK)	
119	52 PT TO INCL 78 PT	PENNSYLVANIA R.R. CO.	

SCALE 1" = 50'
 MADE S.W.F. DATE 7-17-51
 TRCD V.F.R. DATE 12-7-51
 CKD C.R.E. DATE 12-8-51
 HOWARD, NEEDLES, TAMMEN & BERGENDOFF
 CONSULTING ENGINEERS
 KANSAS CITY NEW YORK
 810 SHEET-5.06

Revised 12-7-53

FED. ROAD DIV. NO.	STATE	FED. AID PROJ. NO.	TYPE FUNDS	7
2	OHIO		POST WAR	155

LUCAS COUNTY
CITY OF TOLEDO
TOLEDO EXPRESSWAY SYSTEM
EXPRESSWAY - PART 5

RIGHT-OF-WAY MAP

PARCEL NO.	SUB LOT NO.	OWNER OF RECORD	AREA	PARCEL NO.	SUB LOT NO.	OWNER OF RECORD	AREA	PARCEL NO.	SUB LOT NO.	OWNER OF RECORD	AREA
120	208 PT	STICKNEY'S ADDITION		198	400 PT	STICKNEY'S SUBD'M		185	443 PT	MARY ANNA CHOMOS	
121	208 PT	WIK V. DANE		199	400 PT	AGNES BOLTON		186	443 PT	JOHN M. & HELEN M. GLEASON	
122	207 PT	FRANK M. WILCOX		200	400 PT	NORTON C. GRAHAM		187	443 PT - 444 PT	D. E. FINKNER	
123	397 PT	MARLE S. BENJAMIN		201	400 PT - 401 PT	IDA PRUTZ BUCHAN		188	444 PT	RUBY STABLOFF	
124	396 PT - 397 PT	MC ELROY'S SUBD'M		202	401 PT	RAY & VIDA BELLE SNYDER		189	444 PT - 445 PT	EDNA E. & BESSIE A. DORF	
125	396 PT - 397 PT	WILLIAM E. & EMMA H. SCHART		203	401 PT - 402 PT	TERESA FEUCHT ADAMS		190	445 PT	ELLA E. MILLER	
126	396 PT - 397 PT	EMMA H. SCHART		204	402 PT	MATTIE M. & SHERMAN J. COMELL		191	445 PT	CLYDE & GERTRUDE L. REESE	
127	396 PT - 397 PT	GEORGE & DORA O. DOUGLAS		205	402 PT	WILLIAM J. & MARY BAUMAN		192	446 PT	BINA BELL	
128	399 PT	URSULA BOLLEY		206	403 PT	FRANK M. & VIOLET M. COOK		193	446 PT	WILLIAM & PHYLLIS DAVIS	
129	399 PT	ROBERT F. & PAULINE G. BRIDGES		207	403 PT	JOSEPH E. AUER		194	447 PT	JOSIE C. PETEE	
130	399 PT	PALMER BLAIR SUBD'M		208	403 PT	HOWARD J. PETERS		195	447 PT	HELENA GERTRUDE RANILLY	
131	399 PT	WALLACE BENHKE		209	403 PT	MUELLE J. DOLLINGER BALLARD		196	448 PT	DERRYLL A. & MYRTLE A. GAFF	
132	399 PT	VECTOR E. WALK		210	403 PT	HAROLD J. PETERS		197	448 PT	ANNA L. SABIN	
133	399 PT	ELLA RIVKER		211	403 PT	ROLAND F. SLYBY		198	448 PT	ELIZABETH SZOCH	
134	398 PT	ROY & OPAL BERGUSON		212	403 PT	JOHN W. & RUTH L. JAKWAY		199	449 PT	MABLE LULU DEVRIES	
135	398 PT	ELIZABETH A. KANDIK		213	403 PT	MARGARET SLYBY		200	449 PT	MARY A. OSBORN	
136	398 PT	LESTER JOSEPH LA ROCQUE		214	403 PT	IRENE STEARNS		201	450 PT	THERESA P. HERON	
137	398 PT	HARRY J. & HILLIE L. SMITH		215	403 PT	JULIUS A. GREENHOUSE		202	450 PT	WILLIAM F. WAHM	
		NAMIE M. SHIRLEY		216	403 PT	GLEN F. FITZM-JR.		203	451 PT	WILLIAM & ELIZABETH HAAS	
		JEAN MORNER		217	403 PT	ROCHE R. BENHRA		204	451 PT	MARTHA LOCKERT FOX	
		WILLIAM E. & MARY J. WOOD		218	403 PT	TERESA DOYLE		205	452 PT	CLARENCE B. & CATHERINE OGDEN	
				219	403 PT	JEANNE M. SCHREIBER		206	452 PT - 453 PT	GEORGE C. & MAUDE BROWN	
				220	403 PT	CATHERINE BAXTER		207	453 PT	JOHN W. KOEHRMAN	
				221	403 PT	LELAND M. GILBERT		208	454 PT	DWIGHT A. LITTLETON	
				222	403 PT			209	454 PT	LOUTRELLA HOLINSKY	
				223	403 PT			210	455 PT	JOHN A. MESCHER	
				224	403 PT			211	455 PT	WILLIAM E. & LOUISA ROGENS	
				225	403 PT			212	455 PT	ANNA KIRK	
				226	403 PT			213	455 PT	ALBERT O. & GRACE S. KIMMERO	
				227	403 PT			214	501 PT	HENRY W. & MARY E. BELKOFER	
				228	403 PT			215	501 PT	MARGARET HAYKOVIC	
				229	403 PT			216	501 PT	GEORGE S. JACKSON	
				230	403 PT			217	501 PT	WIRLIN C. WOODWARD	

PARCEL NO.	SUB LOT NO.	OWNER OF RECORD	AREA
218	501 PT	EDITH R. RAAB	
219	501 PT	MORRIS ANHAM	
220	501 PT	WALTER & ETHEL M. RAY	
221	501 PT	ERNEST C. & HELEN BOWMAN	
222	412 PT - 413 PT	BERTON LEO & ELENOR E. HARNICK	
223	412 PT - 413 PT	THE CITIZENS TRUST CO.	
224	412 PT - 413 PT	MERRELL & MILDRED KED.	
225	412 PT - 413 PT	JAMES & PARASKEVE PAPAS	
226	413 PT	JAMES & MARIE ANGIN	
227	414	HAROLD J. POWERS	
228	415 PT	HELEN C. HIGLEY	
229	415 PT	ANTHONY P. & ANTOINETTE CARUSO	
230	416	HELEN JOHNSON	
231	417 - 418 PT	TOLEDO BOARD OF EDUCATION	
232	418 PT - 419	GRACE CHURCH	
233	432 PT	DOROTHEA HARY NOBLE	
234	432 PT - 433 PT	LURENA A. WAGNER	
235	433 PT	JAMES A. & MARY B. WAGNER	
236	434 PT	HARVEY B. & ANNA M. LEAFGREEN	
237	434 PT - 435	CULLIE L. & PEARL LEE	
238	436 PT	ALBERT W. TAMMER	
239	436 PT	BADER DEEB	
240	437 PT	ORVILLE L. & ROSE A. RINK	
241	437 PT	HAROLD J. POWERS	
242	438 PT	EDITH M. BIRD	
243	438 PT - 439 PT	BERT KAISER	
244	438 PT - 439 PT	ANNA M. FRANK	
245	438 PT - 439 PT	LEE E. MC DONELL	
246	438 PT - 439 PT	HAROLD J. POWERS	
247	458 PT	ALICE A. & MICHAEL JUDDSON JR. GAYLORD	
248	458 PT	HAROLD POWERS	
249	458 PT	LILLIAN B. MAHONEY LITCHIE	
250	460 PT	ARTHUR E. PRITCHETT, GUARDIAN	
251	460 PT	TADUESA A. & ROSELLE PESKOR	
252	461	LOUISE B. HOTZ	
253	456 PT - 457 PT	PECK LOSES SUBD'M	
254	456 PT - 457 PT	HAROLD J. POWERS	
255	456 PT - 457 PT	BELLA GERTRUDE C. WEBBER	
256	456 PT - 457 PT	STANLEY CHURCH	
257	457 PT	MARGARET SLYBY	
258	457 PT	PACARD REALTY CO.	
		PACARD REALTY CO.	



SCALE: 1" = 50'
MADE S.W. DATE: 7-19-51
TRCD. R.R. DATE: 8-52
CKD. J.L.W. DATE: 12-3-53

HOWARD, NEEDLES, TAMMEN & BERGENDOFF
CONSULTING ENGINEERS
KANSAS CITY NEW YORK
1810 SHEET: 5.07

See Sheet 4