

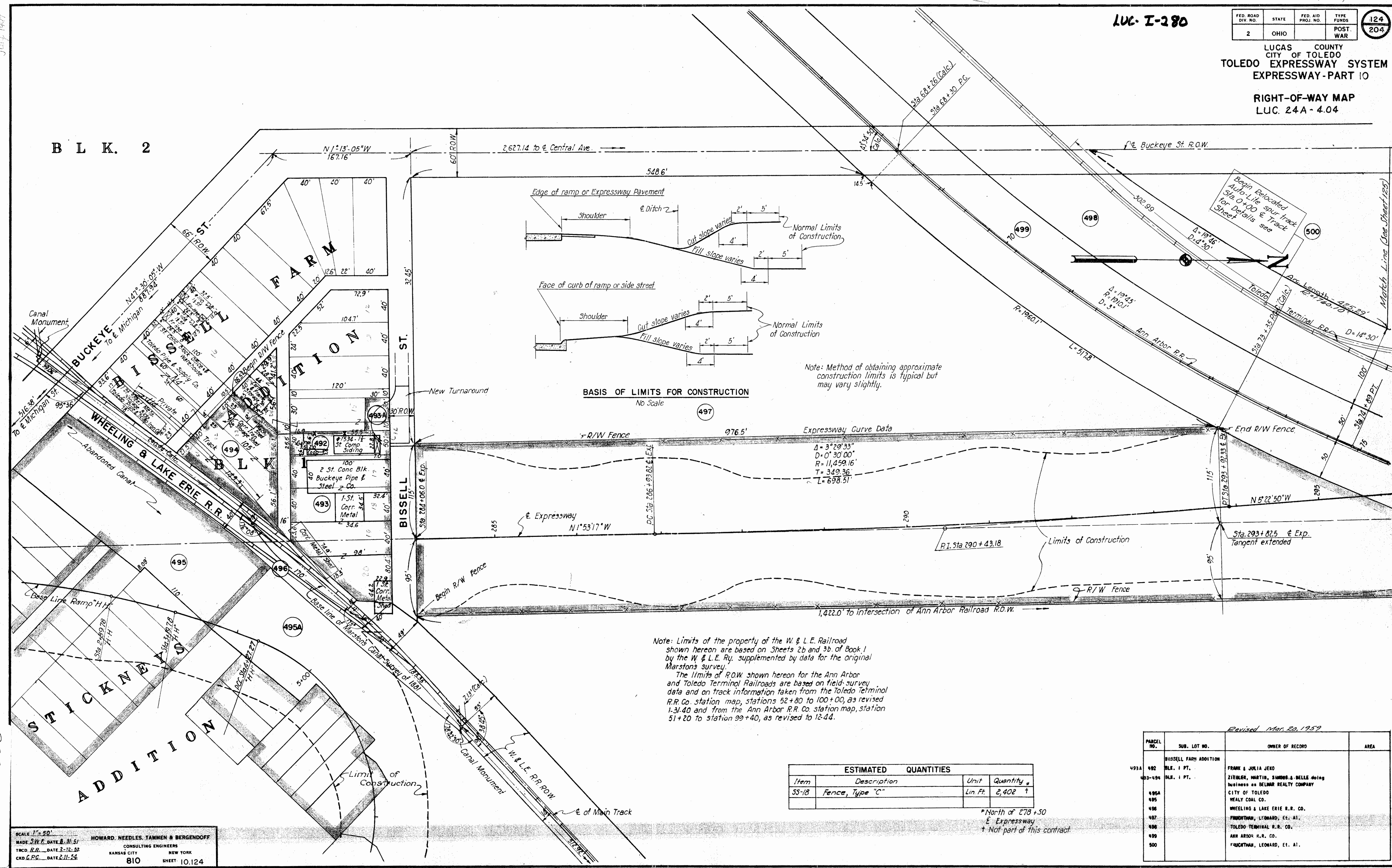
LUC- I-280

FED. ROAD DIV. NO.	STATE	FED. AID PROJ. NO.	TYPE FUNDS
2	OHIO		POST. WAR

LUCAS COUNTY  
CITY OF TOLEDO  
TOLEDO EXPRESSWAY SYSTEM  
EXPRESSWAY - PART 10

RIGHT-OF-WAY MAP  
LUC. 24A - 4.04

B L K. 2



BASIS OF LIMITS FOR CONSTRUCTION  
No Scale

Expressway Curve Data

Note: Limits of the property of the W. & L.E. Railroad shown hereon are based on Sheets 2b and 3b. of Book 1 by the W. & L.E. Ry. supplemented by data for the original Marston's survey.  
The limits of R.O.W. shown hereon for the Ann Arbor and Toledo Terminal Railroads are based on field survey data and on track information taken from the Toledo Terminal R.R. Co. station map, stations 52+80 to 100+00, as revised 1-31-40 and from the Ann Arbor R.R. Co. station map, station 51+20 to station 99+40, as revised to 12-44.

ESTIMATED QUANTITIES			
Item	Description	Unit	Quantity
55-18	Fence, Type "C"	Lin. Ft.	2,402 †

\*North of 278+50  
† Not part of this contract

Revised Mar. 20, 1959

PARCEL NO.	SUB. LOT NO.	OWNER OF RECORD	AREA
493A	492	BESSELL FARM ADDITION	
	493	BLK. 1 PT.	
	494	BLK. 1 PT.	
	495A	FRANK & JULIA JERO	
	495	ZIEGLER, MARTIN, SIMONS & BELLE doing business as BELMAR REALTY COMPANY	
	496	CITY OF TOLEDO	
	497	WHEELING & LAKE ERIE R.R. CO.	
	498	FRUCHTMAN, LEONARD, ET. AL.	
	499	TOLEDO TERMINAL R.R. CO.	
	500	ANN ARBOR R.R. CO.	
		FRUCHTMAN, LEONARD, ET. AL.	

SCALE 1" = 50'  
MADE S.W. DATE 8-31-51  
TRCD. R.R. DATE 2-12-52  
CKD G.P.C. DATE 2-11-54  
HOWARD, NEEDLES, TAMMEN & BERGENDOFF  
CONSULTING ENGINEERS  
KANSAS CITY NEW YORK  
810 SHEET 10.124

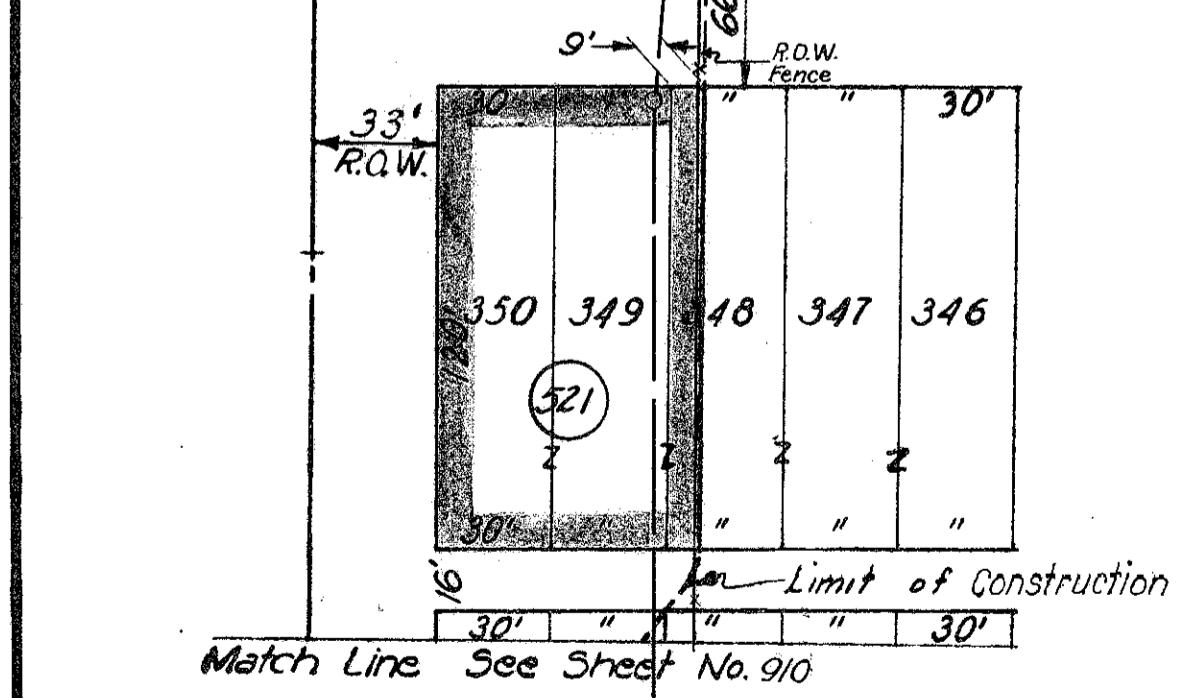
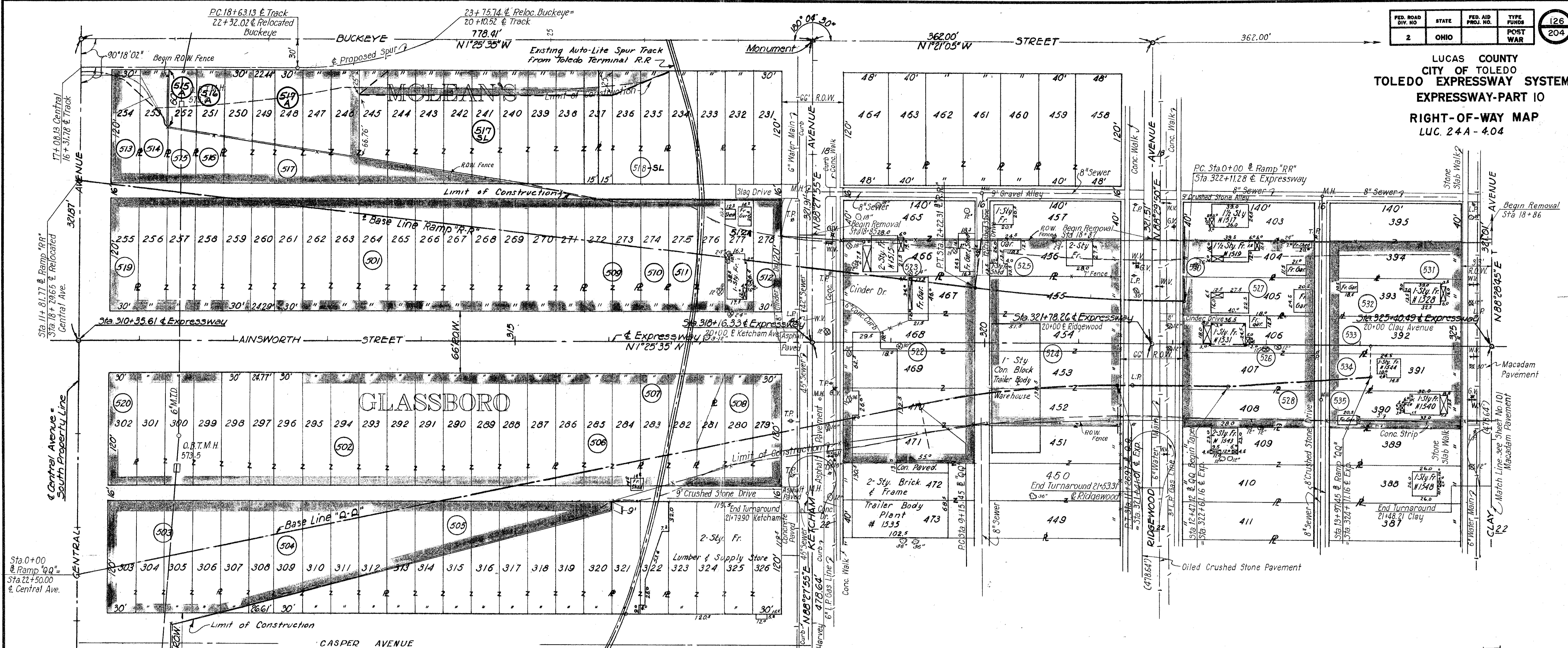
Scanned July 14, 1997

R-3280 49 4-69



FED. ROAD DIV. NO.	STATE	FED. AID PROJ. NO.	TYPE FUNDS	126
2	OHIO		POST WAR	204

LUCAS COUNTY  
CITY OF TOLEDO  
TOLEDO EXPRESSWAY SYSTEM  
EXPRESSWAY-PART 10  
RIGHT-OF-WAY MAP  
LUC. 24A-4.04



PARCEL NO.	SUB LOT NO.	OWNER OF RECORD
501	256-271	THE PALMA ORCHARDS COMPANY
502	287-301	THE PALMA ORCHARDS COMPANY
503	303-306	GIANT LUMBER & BUILDING COMPANY
504	P.T. 307-312	THE PALMA ORCHARDS COMPANY
505	P.T. 313-320	GIANT LUMBER & BUILDING COMPANY
506	288-286	TOLEDO TERMINAL RAILROAD
507	281-283	GIANT LUMBER & BUILDING COMPANY
508	272-281	GIANT LUMBER & BUILDING COMPANY
509	272-273	MCCARTHY, ROBERT L. & BEATRICE V.
510	274	ROCK REALTY COMPANY
511	275-276	TOLEDO TERMINAL RAILROAD
512	277-278	SCHWELLINGER, ALBERT M. & ISABEL
513	254	THE PALMA ORCHARDS COMPANY
514	253	READ, HARRIETT
515	P.T. 252	MCDERMOTT, ANNA
516	P.T. 251	EDWARD LAMB ENTERPRISES INC.
517	P.T. 240-250	THE PALMA ORCHARDS COMPANY
518	255	ROCK REALTY COMPANY
519	302	FORFIETED LAND 6-1-50
520	P.T. 348-350	GIANT LUMBER & BUILDING COMPANY
521	467-471	MIDDLEKAUFF INCORPORATED
522	466	KUENHLE, MARY A.
523	452-455	MIDDLEKAUFF INCORPORATED
524	456	HUGHES, WILLIAM M. ET AL
525	406-407	ELCESS, HAZEL
526	405	KUENHLE, CLIFFORD C.
527	408	CAMPER, OTTO
528	409	YOUNG, CHESTER R. & ESTER V.
529	394	KUENHLE, FRANCIS F.
530	393	KARL, CHARLOTTE M.
531	392	RADDATZ, HENRY D.
532	391	COOK, WILLIAM H.
533	390	RUTKOWSKI, ANTHONY T. & HELEN D.
534	P.T. 237-235	GRZYBOWSKI, EDWIN

ITEM	DESCRIPTION	UNIT	KETCHAM AVENUE	RIDGEWOOD AVENUE	CLAY AVENUE	GENERAL
E-8	Removal & Disposal of Driveway (Concrete)	Sq Yds			70	
E-8	Removal & Disposal of Sidewalk (Concrete)	Sq Ft	1480	2665		
E-8	Removal & Disposal of Sidewalk (Stone)	Sq Ft			1310	
E-8	Removal & Disposal of Curb (Concrete)	Lin Ft	592			
S.S-18	Fence Type "C"	Lin Ft				3156

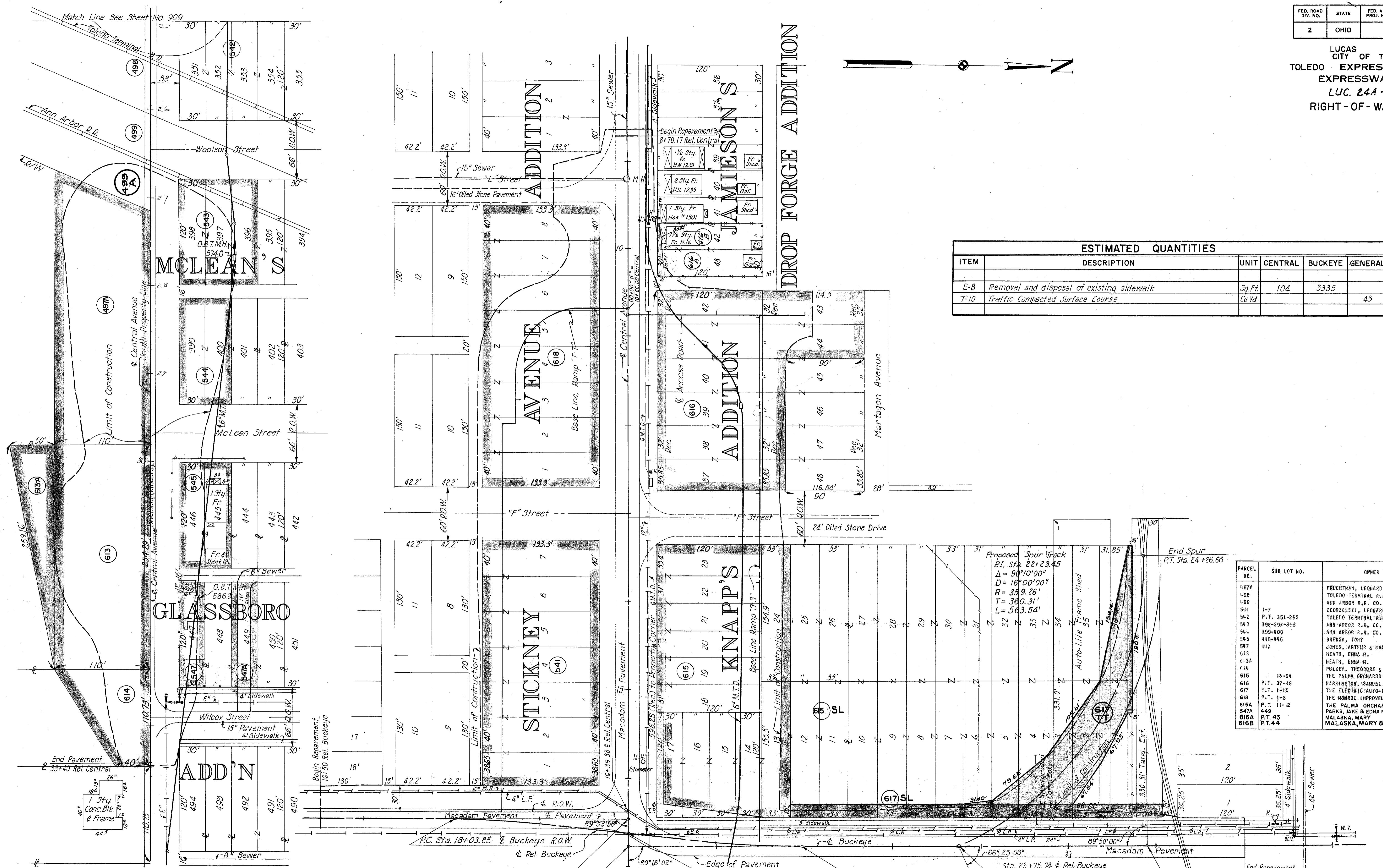
SCALE 1"=50'  
 MADE BY HOWARD, NEEDLES, TAMMEN & BERGENOFF  
 TRCD DATE 2-9-55  
 CKD DATE 2-9-55  
 DATE 12-7-55  
 KANSAS CITY NEW YORK  
 810 SHEET 10.126

Scanned July 1997

FILE 4-1

FED. ROAD DIV. NO.	STATE	FED. AID PROJ. NO.	TYPE FUNDS	127 204
2	OHIO			

LUCAS COUNTY  
CITY OF TOLEDO  
TOLEDO EXPRESSWAY SYSTEM  
EXPRESSWAY-PART 10  
LUC. 241-404  
RIGHT-OF-WAY MAP



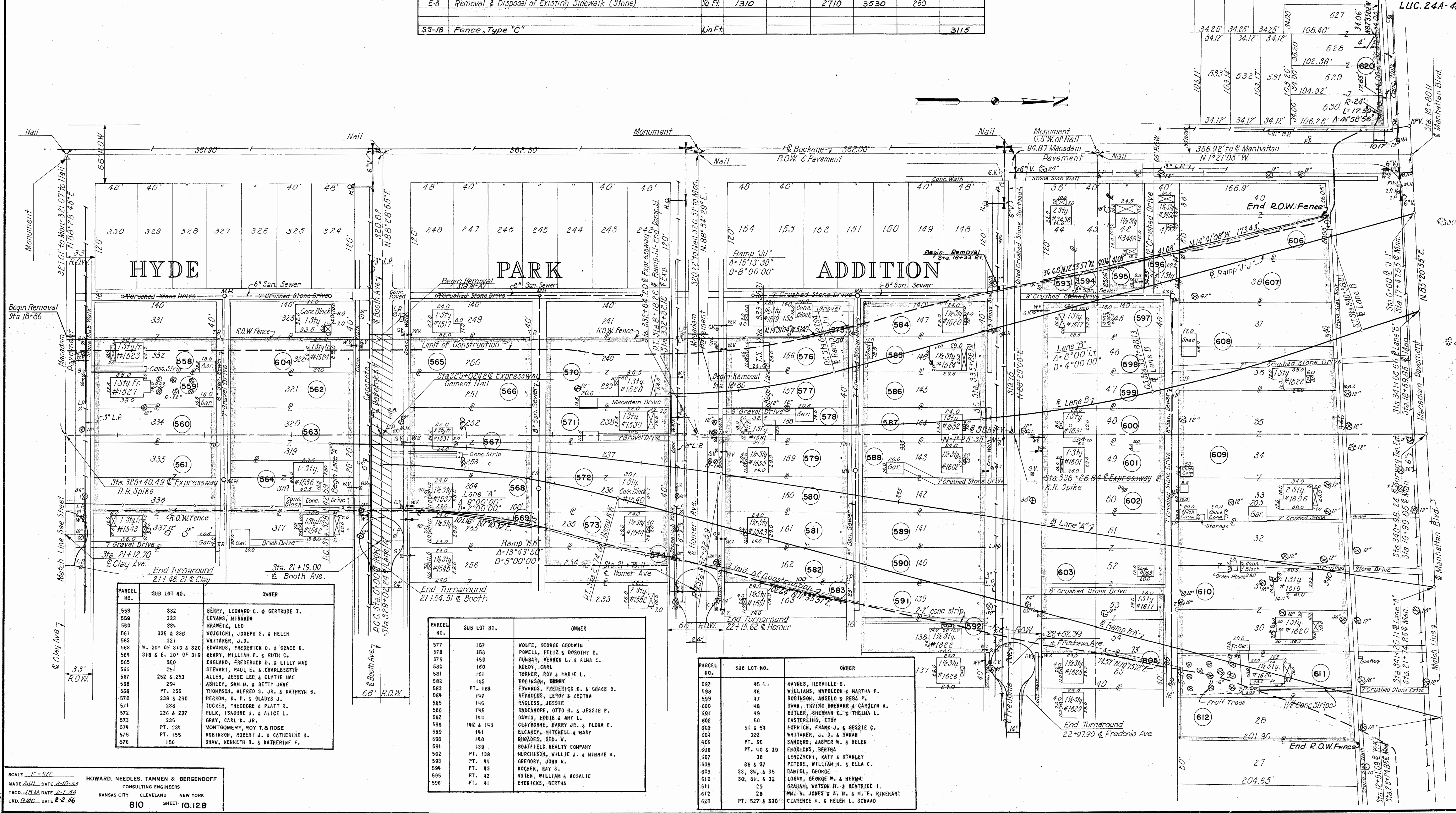
ITEM	DESCRIPTION	UNIT	CENTRAL	BUCKEYE	GENERAL
E-8	Removal and disposal of existing sidewalk	Sq. Ft.	104	3335	
T-10	Traffic Compacted Surface Course	Cu Yd			43

PARCEL NO.	SUB LOT NO.	OWNER OF RECORD
497A		FRUCHTMAN, LEONARD ET AL
498		TOLEDO TERMINAL R.R.
499		ANN ARBOR R.R. CO.
541	1-7	ZGORZELSKI, LEONARD F.
542	P.T. 351-352	TOLEDO TERMINAL R.R.
543	398-399-398	ANN ARBOR R.R. CO.
544	399-400	ANN ARBOR R.R. CO.
545	445-446	BREKSA, TONY
547	447	JONES, ARTHUR & MARY
613		HEATH, EMMA H.
614		PULKEY, THEODORE & EDITH
615	13-24	THE PALMA ORCHARDS COMPANY
616	P.T. 37-48	HARRINGTON, SAMUEL A.
617	P.T. 1-10	THE ELECTRIC AUTO-LITE COMPANY
618	P.T. 1-8	THE HOWRE IMPROVEMENT COMPANY
615A	P.T. 11-12	THE PALMA ORCHARDS COMPANY
647A	449	PARKS, JAKE & EDNA MAY
616A	P.T. 43	MALASKA, MARY
616B	P.T. 44	MALASKA, MARY & FELIX

SCALE 1" = 50'  
MADE S.F.B. DATE 2-9-55  
TRCD. R.M.B. DATE 1-30-56  
CKD. J.E.W. DATE 2-2-56  
HOWARD, NEEDLES, TAMMEN & BERGENOFF  
CONSULTING ENGINEERS  
KANSAS CITY CLEVELAND NEW YORK  
110  
SHEET 10.127

Sta. 20+00 & Ext. Buckeye = 16+78.13 & Rel. Central Ave.  
Sta. 20+00 & Ext. Buckeye = 16+46.38 & Central Ave.  
Sta. 20+00 & Rel. Buckeye = 16+62.00 & Central Ave.  
PT. Sta. 21+97.96 Rel. Buckeye = 21+97.24 & Ext. Buckeye  
Sta. 23+75.74 & Rel. Buckeye = 20+10.52 & Track  
Sta. 25+92.25 & Reloc. Buckeye = 27+00 Rel. Buckeye

ESTIMATED QUANTITIES							
ITEM	DESCRIPTION	UNIT	CLAY	BOOTH	HOMER	FREDONIA	MANHATTAN GENERAL
E-8	Removal & Disposal of Existing Pavement (Concrete)	Sq. Yd.		720			1269
E-8	Removal & Disposal of Existing Pavement (Conc. Drive)	Sq. Yd.	26	31	560	62	35
E-8	Removal & Disposal of Existing Sidewalk (Concrete)	Sq. Ft.		2700		900	675
E-8	Removal & Disposal of Existing Sidewalk (Stone)	Sq. Ft.	1310		2710	3530	250
SS-18	Fence, Type "C"	Lin. Ft.					3115



PARCEL NO.	SUB LOT NO.	OWNER
558	332	BERRY, LEONARD C. & GERTRUDE T.
559	333	LEVANS, MIRANDA
560	334	KRAWETZ, LEO
561	335 & 336	WOJCIK, JOSEPH S. & HELEN
562	321	WHITAKER, J.D.
563	W. 20' OF 319 & 320	EDWARDS, FREDERICK D. & GRACE B.
564	318 & E. 20' OF 319	BERRY, WILLIAM P. & RUTH C.
565	250	ENGLAND, FREDERICK D. & LILLY MAE
566	251	STEWART, PAUL E. & CHARLESETTA
567	252 & 253	ALLEN, JESSE LEE & CLYDIE MAE
568	254	ASHLEY, SAM M. & BETTY JANE
569	PT. 255	THOMPSON, ALFRED S. JR. & KATHRYN B.
570	239 & 240	HERRON, R. D. & GLADYS J.
571	238	TUCKER, THEODORE & PLATT R.
572	236 & 237	FULK, ISADORE J. & ALICE L.
573	235	GRAY, CARL K. JR.
574	PT. 234	MONTGOMERY, ROY T. & ROSE
575	PT. 155	ROBINSON, ROBERT J. & CATHERINE H.
576	156	SHAW, KENNETH B. & KATHERINE F.

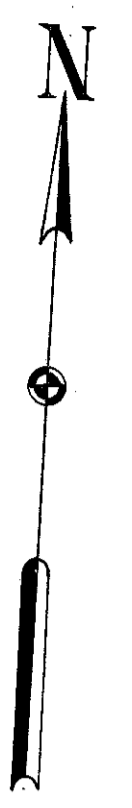
PARCEL NO.	SUB LOT NO.	OWNER
577	157	WOLFE, GEORGE GOODWIN
578	158	POWELL, FELIZ & DOROTHY G.
579	159	DUNBAR, VERNON L. & ALMA E.
580	160	RUEBY, CARL
581	161	TURNER, ROY & MARIE L.
582	162	ROBINSON, BERNY
583	PT. 163	EDWARDS, FREDERICK D. & GRACE B.
584	147	REYNOLDS, LEROY & ZEOETHA
585	146	BALESSE, JESSIE
586	145	SADENHOPE, OTTO H. & JESSIE E.
587	144	DAVIS, EDDIE & AMY L.
588	142 & 143	CLAYBORNE, HARRY JR. & FLORA E.
589	141	ELCAREY, MITCHELL & MARY
590	140	RHOADES, GEO. W.
591	139	BOATFIELD REALTY COMPANY
592	PT. 138	MURCHISON, WILLIE J. & MINNIE A.
593	PT. 44	GREGORY, JOHN R.
594	PT. 43	KOCHER, RAY S.
595	PT. 42	ASTEN, WILLIAM & ROSALIE
596	PT. 41	ENDRICKS, BERTHA

PARCEL NO.	SUB LOT NO.	OWNER
597	45	HAYNES, HERVILLE S.
598	46	WILLIAMS, NAPOLEON & MARTHA P.
599	47	ROBINSON, ANGELO & REBA P.
600	48	SWAN, IRVING BRENNER & CAROLYN R.
601	49	BUTLER, SHERMAN G. & THELMA L.
602	50	EASTERLING, ETOY
603	51 & 54	FOPFRICH, FRANK J. & BESSIE C.
604	52	WHITAKER, J. D. & SARAH
605	PT. 55	SANDERS, JASPER W. & HELEN
606	PT. 40 & 39	ENDRICKS, BERTHA
607	38	LENCZYCKI, KATY & STANLEY
608	36 & 37	PETERS, WILLIAM N. & ELLA C.
609	33, 34, & 35	DANIEL, GEORGE
610	30, 31, & 32	LOGAN, GEORGE W. & HERMA
611	29	GRANAM, WATSON M. & BEATRICE I.
612	28	WM. R. JONES & A. H. & M. E. RINEHART
620	PT. 1527 & 530	CLARENCE A. & HELEN L. SCHAAD

LUCAS COUNTY CITY OF TOLEDO TOLEDO EXPRESSWAY SYSTEM EXPRESSWAY-PART 10

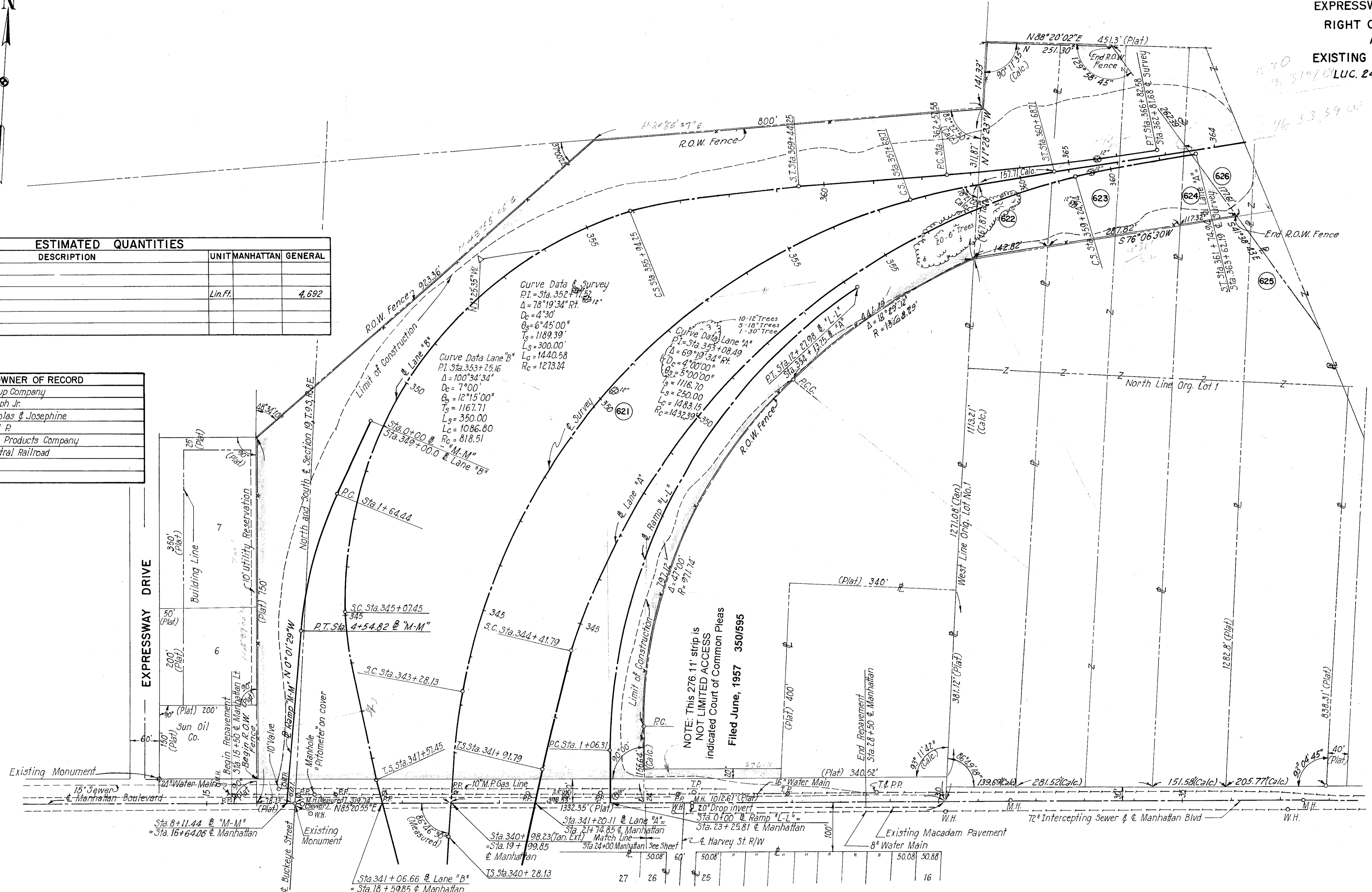
RIGHT OF WAY MAP AND EXISTING CONDITIONS

LUC. 24A - 4.04



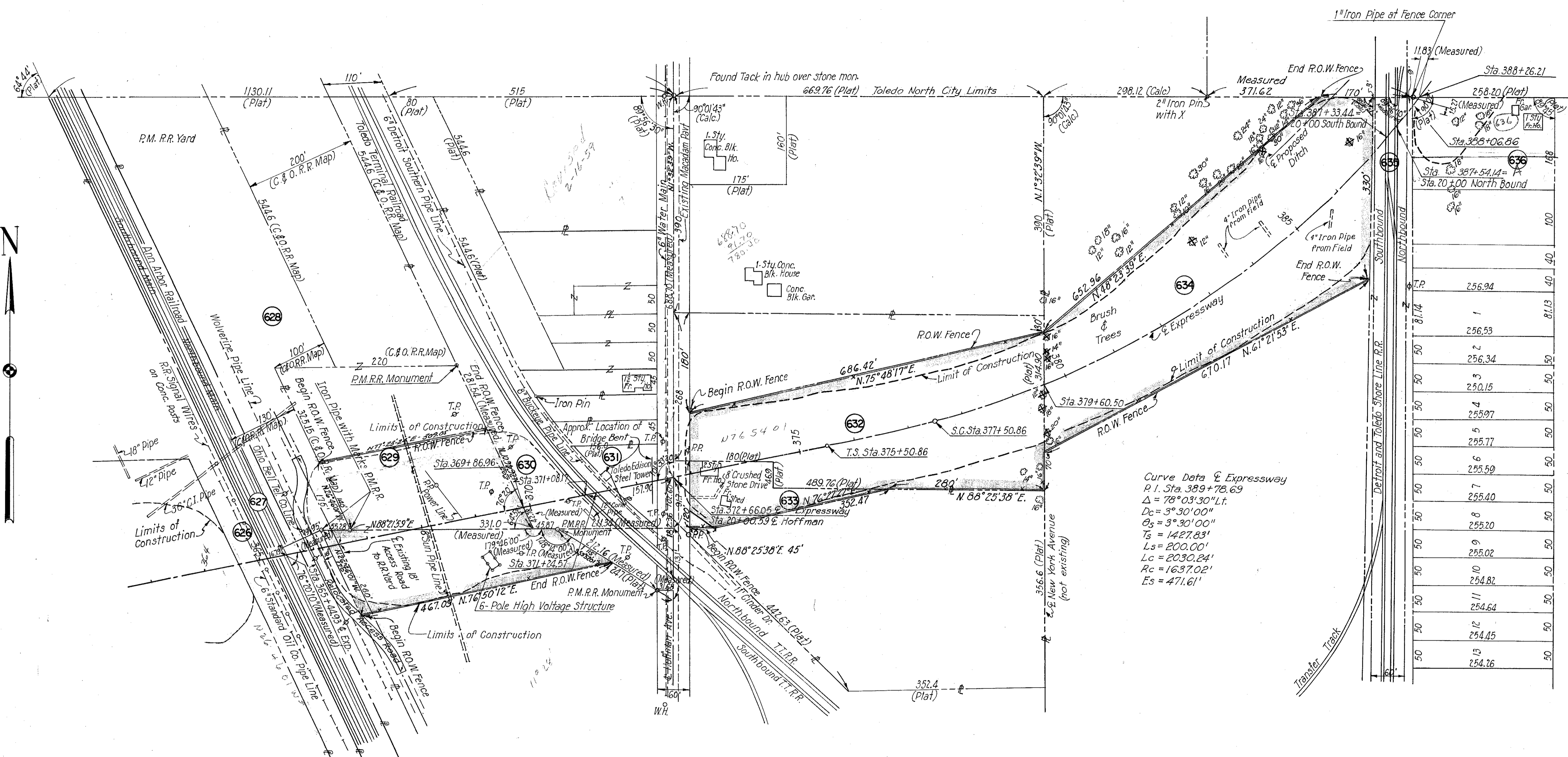
ESTIMATED QUANTITIES			
ITEM	DESCRIPTION	UNIT	MANHATTAN GENERAL
SS-18	Fence Type C	Lin. Ft.	4,692

PARCEL	LOT	OWNER OF RECORD
621		Campbell Soup Company
622		Krempa, Joseph Jr.
623		Madras, Nicholas & Josephine
624		Reacher, Carl R.
625		The Inshield Products Company
626		Michigan Central Railroad

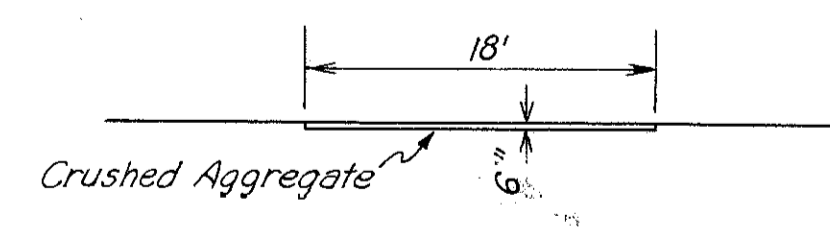


REVISED 6/18/57

LUCAS COUNTY  
CITY OF TOLEDO  
**TOLEDO EXPRESSWAY SYSTEM**  
EXPRESSWAY-PART 10  
RIGHT OF WAY MAP  
AND  
EXISTING CONDITIONS  
LUC. 24A-4.04



Curve Data Expressway  
 P.I. Sta. 389+78.69  
 $\Delta = 78^{\circ}03'30''$  Lt.  
 $D_c = 3^{\circ}30'00''$   
 $\theta_s = 3^{\circ}30'00''$   
 $T_s = 1427.83'$   
 $L_s = 200.00'$   
 $L_c = 2030.24'$   
 $R_c = 1637.02'$   
 $E_s = 471.61'$



**TYPICAL SECTION**  
RELOCATED ACCESS ROAD  
Scale 1"=10'

ESTIMATED QUANTITIES				
ITEM	DESCRIPTION	UNIT	General	Rel. Access Rd.
T-10	6" Traffic Compacted Surface Course	Cu. Yd.		400
SS-18	Fence, Type "C"	Lin. Ft.	3535	

PARCEL	LOT	OWNER OF RECORD
626		Michigan Central Railroad
627		Ann Arbor Railroad
628		Pierre Marquette Railroad
629		Chesapeake & Ohio Railroad
630		Toledo Terminal Railroad
631		The Toledo Edison Company
632		Meade, Lillie
633		Schmidt, John J.
634		Romstadt, Richard H.
635		Detroit & Toledo Shoreline Railroad
636		Layfar, Laura J. & Arthur V.

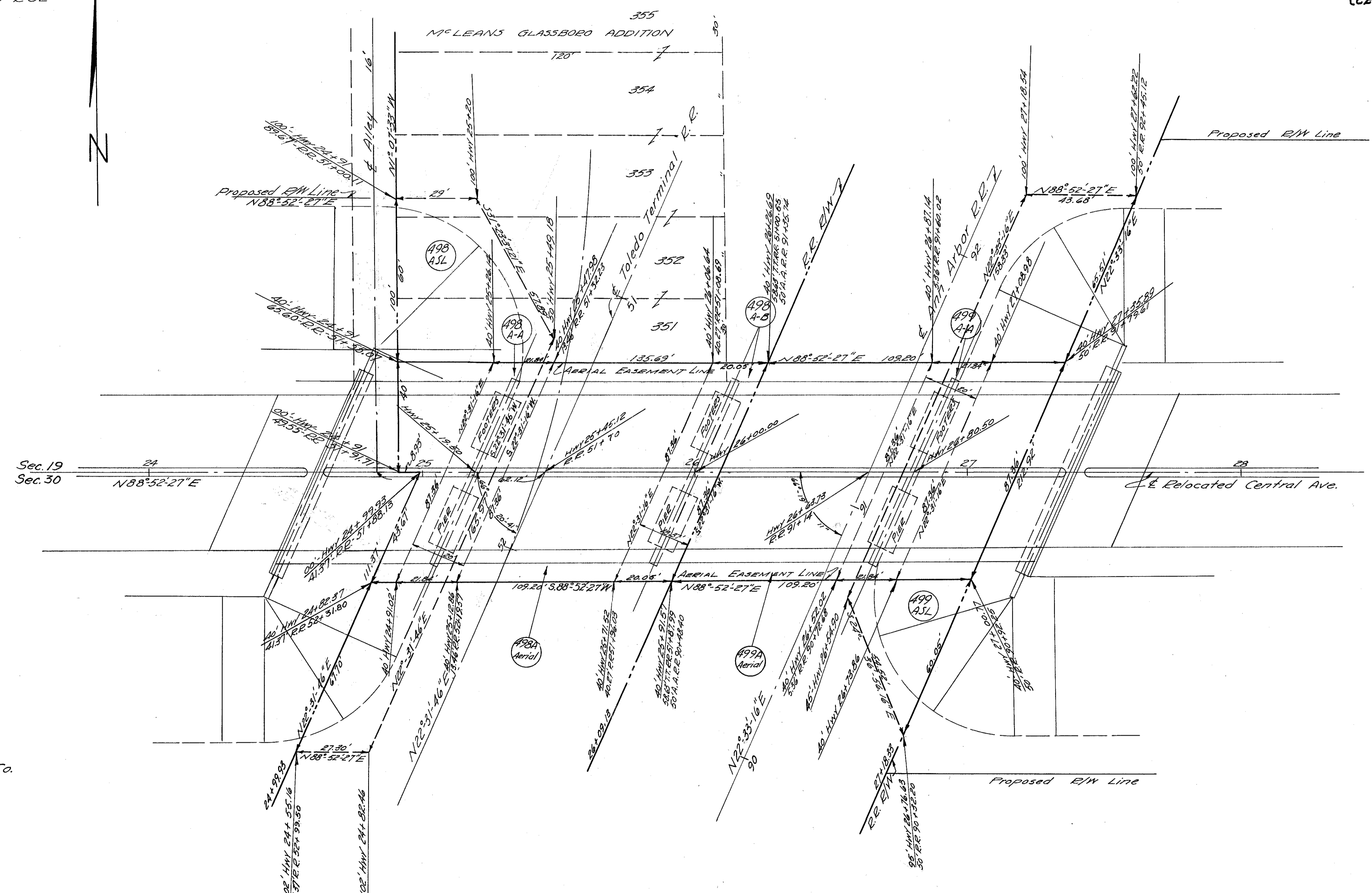
Station	Northbound	Southbound
388+26.21		
387+54.14		
387+00	8.14	
386+00	8.13	
385+00	8.13	
384+00	8.13	
383+00	8.13	
382+00	8.13	
381+00	8.13	
380+00	8.13	
379+00	8.13	
378+00	8.13	
377+00	8.13	
376+00	8.13	
375+00	8.13	
374+00	8.13	
373+00	8.13	
372+00	8.13	
371+00	8.13	
370+00	8.13	
369+00	8.13	
368+00	8.13	
367+00	8.13	
366+00	8.13	
365+00	8.13	
364+00	8.13	
363+00	8.13	
362+00	8.13	
361+00	8.13	
360+00	8.13	
359+00	8.13	
358+00	8.13	
357+00	8.13	
356+00	8.13	
355+00	8.13	
354+00	8.13	
353+00	8.13	
352+00	8.13	
351+00	8.13	
350+00	8.13	
349+00	8.13	
348+00	8.13	
347+00	8.13	
346+00	8.13	
345+00	8.13	
344+00	8.13	
343+00	8.13	
342+00	8.13	
341+00	8.13	
340+00	8.13	
339+00	8.13	
338+00	8.13	
337+00	8.13	
336+00	8.13	
335+00	8.13	
334+00	8.13	
333+00	8.13	
332+00	8.13	
331+00	8.13	
330+00	8.13	
329+00	8.13	
328+00	8.13	
327+00	8.13	
326+00	8.13	
325+00	8.13	
324+00	8.13	
323+00	8.13	
322+00	8.13	
321+00	8.13	
320+00	8.13	
319+00	8.13	
318+00	8.13	
317+00	8.13	
316+00	8.13	
315+00	8.13	
314+00	8.13	
313+00	8.13	
312+00	8.13	
311+00	8.13	
310+00	8.13	
309+00	8.13	
308+00	8.13	
307+00	8.13	
306+00	8.13	
305+00	8.13	
304+00	8.13	
303+00	8.13	
302+00	8.13	
301+00	8.13	
300+00	8.13	
299+00	8.13	
298+00	8.13	
297+00	8.13	
296+00	8.13	
295+00	8.13	
294+00	8.13	
293+00	8.13	
292+00	8.13	
291+00	8.13	
290+00	8.13	
289+00	8.13	
288+00	8.13	
287+00	8.13	
286+00	8.13	
285+00	8.13	
284+00	8.13	
283+00	8.13	
282+00	8.13	
281+00	8.13	
280+00	8.13	
279+00	8.13	
278+00	8.13	
277+00	8.13	
276+00	8.13	
275+00	8.13	
274+00	8.13	
273+00	8.13	
272+00	8.13	
271+00	8.13	
270+00	8.13	
269+00	8.13	
268+00	8.13	
267+00	8.13	
266+00	8.13	
265+00	8.13	
264+00	8.13	
263+00	8.13	
262+00	8.13	
261+00	8.13	
260+00	8.13	
259+00	8.13	
258+00	8.13	
257+00	8.13	
256+00	8.13	
255+00	8.13	
254+00	8.13	
253+00	8.13	
252+00	8.13	
251+00	8.13	
250+00	8.13	
249+00	8.13	
248+00	8.13	
247+00	8.13	
246+00	8.13	
245+00	8.13	
244+00	8.13	
243+00	8.13	
242+00	8.13	
241+00	8.13	
240+00	8.13	
239+00	8.13	
238+00	8.13	
237+00	8.13	
236+00	8.13	
235+00	8.13	
234+00	8.13	
233+00	8.13	
232+00	8.13	
231+00	8.13	
230+00	8.13	
229+00	8.13	
228+00	8.13	
227+00	8.13	
226+00	8.13	
225+00	8.13	
224+00	8.13	
223+00	8.13	
222+00	8.13	
221+00	8.13	
220+00	8.13	
219+00	8.13	
218+00	8.13	
217+00	8.13	
216+00	8.13	
215+00	8.13	
214+00	8.13	
213+00	8.13	
212+00	8.13	
211+00	8.13	
210+00	8.13	
209+00	8.13	
208+00	8.13	
207+00	8.13	
206+00	8.13	
205+00	8.13	
204+00	8.13	
203+00	8.13	
202+00	8.13	
201+00	8.13	
200+00	8.13	
199+00	8.13	
198+00	8.13	
197+00	8.13	
196+00	8.13	
195+00	8.13	
194+00	8.13	
193+00	8.13	
192+00	8.13	
191+00	8.13	
190+00	8.13	
189+00	8.13	
188+00	8.13	
187+00	8.13	
186+00	8.13	
185+00	8.13	
184+00	8.13	
183+00	8.13	
182+00	8.13	
181+00	8.13	
180+00	8.13	
179+00	8.13	
178+00	8.13	
177+00	8.13	
176+00	8.13	
175+00	8.13	
174+00	8.13	
173+00	8.13	
172+00	8.13	
171+00	8.13	
170+00	8.13	
169+00	8.13	
168+00	8.13	
167+00	8.13	
166+00	8.13	
165+00	8.13	
164+00	8.13	
163+00	8.13	
162+00	8.13	
161+00	8.13	
160+00	8.13	
159+00	8.13	
158+00	8.13	
157+00	8.13	
156+00	8.13	
155+00	8.13	
154+00	8.13	
153+00	8.13	
152+00	8.13	
151+00	8.13	
150+00	8.13	
149+00	8.13	
148+00	8.13	
147+00	8.13	
146+00	8.13	
145+00	8.13	
144+00	8.13	
143+00	8.13	
142+00	8.13	
141+00	8.13	
140+00	8.13	
139+00	8.13	
138+00	8.13	
137+00	8.13	
136+00	8.13	
135+00	8.13	
134+00	8.13	
133+00	8.13	
132+00	8.13	
131+00	8.13	
130+00	8.13	
129+00	8.13	
128+00	8.13	
127+00	8.13	
126+00	8.13	
125+00	8.13	
124+00	8.13	
123+00	8.13	
122+00	8.13	
121+00	8.13	
120+00	8.13	
119+00	8.13	
118+00	8.13	
117+00	8.13	
116+00	8.13	
115+00	8.13	
114+00	8.13	
113+00	8.13	
112+00	8.13	
111+00	8.13	
110+00	8.13	
109+00	8.13	
108+00	8.13	
107+00	8.13	
106+00	8.13	
105+00	8.13	
104+00	8.13	
103+00	8.13	
102+00	8.13	
101+00	8.13	
100+00	8.13	
99+00	8.13	
98+00	8.13	
97+00	8.13	
96+00	8.13	
95+00	8.13	
94+00	8.13	
93+00	8.13	
92+00	8.13	
91+00	8.13	
90+00	8.13	
89+00	8.13	
88+00	8.13	
87+00	8.13	
86+00	8.13	
85+00	8.13	
84+00	8.13	
83+00	8.13	
82+00	8.13	
81+00	8.13	
80+00	8.13	
79+00	8.13	
78+00	8.13	
77+00	8.13	
76+00	8.13	
75+00	8.13	
74+00	8.13	
73+00	8.13	
72+00	8.13	
71+00	8.13	
70+00	8.13	
69+00	8.13	
68+00	8.13	

141744  
PLANS

DATE	BY	REVISION
2	CHD	

LUC-24-A-4.04  
 TOLEDO EXPRESSWAY  
 PROJECT 451 PART 10  
 (CENTRAL AVE. SEPARATION)

McLeans Glassboro Addition  
 City of Toledo, Washington Twp  
 Lucas Co., Sec. 19 & 30, T9S R8E



Toledo Terminal R.R. Co.

- 498A Aerial Cont. 0.217 Ac. ±
- 498 A-A Cont. 0.040 Ac. ±
- 498 A-B Cont. 0.037 Ac. ±
- 499 ASL Cont. 0.168 Ac. ±
- Ann Arbor R.R. Co.
- 499A Aerial Cont. 0.201 Ac. ±
- 499 A-A Cont. 0.040 Ac. ±
- 499 ASL Cont. 0.170 Ac. ±

NOTE ~  
 PLAN SHOWING HIGHWAY CONSTRUCTION  
 ON ANN ARBOR RAILROAD & TOLEDO TERMINAL  
 RAILROAD PROPERTY AT BRIDGE NO. 26.

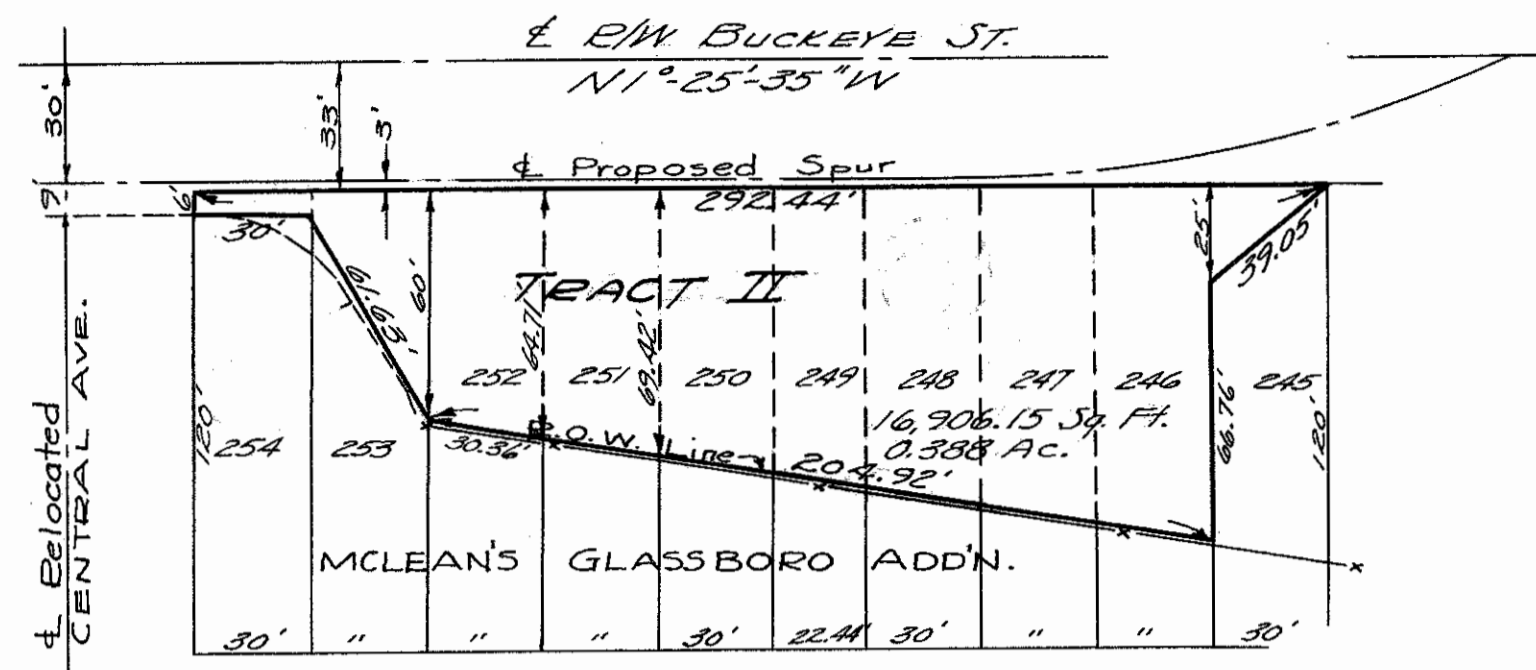
Note:  
 Valuations Survey Stations shown are referred to  
 those shown on:  
 Ann Arbor R.R. E/W Track Map O-1, S-T2  
 Toledo Terminal R.R. E/W Track Map S-1A, S-1B

Revised: 3-25-59

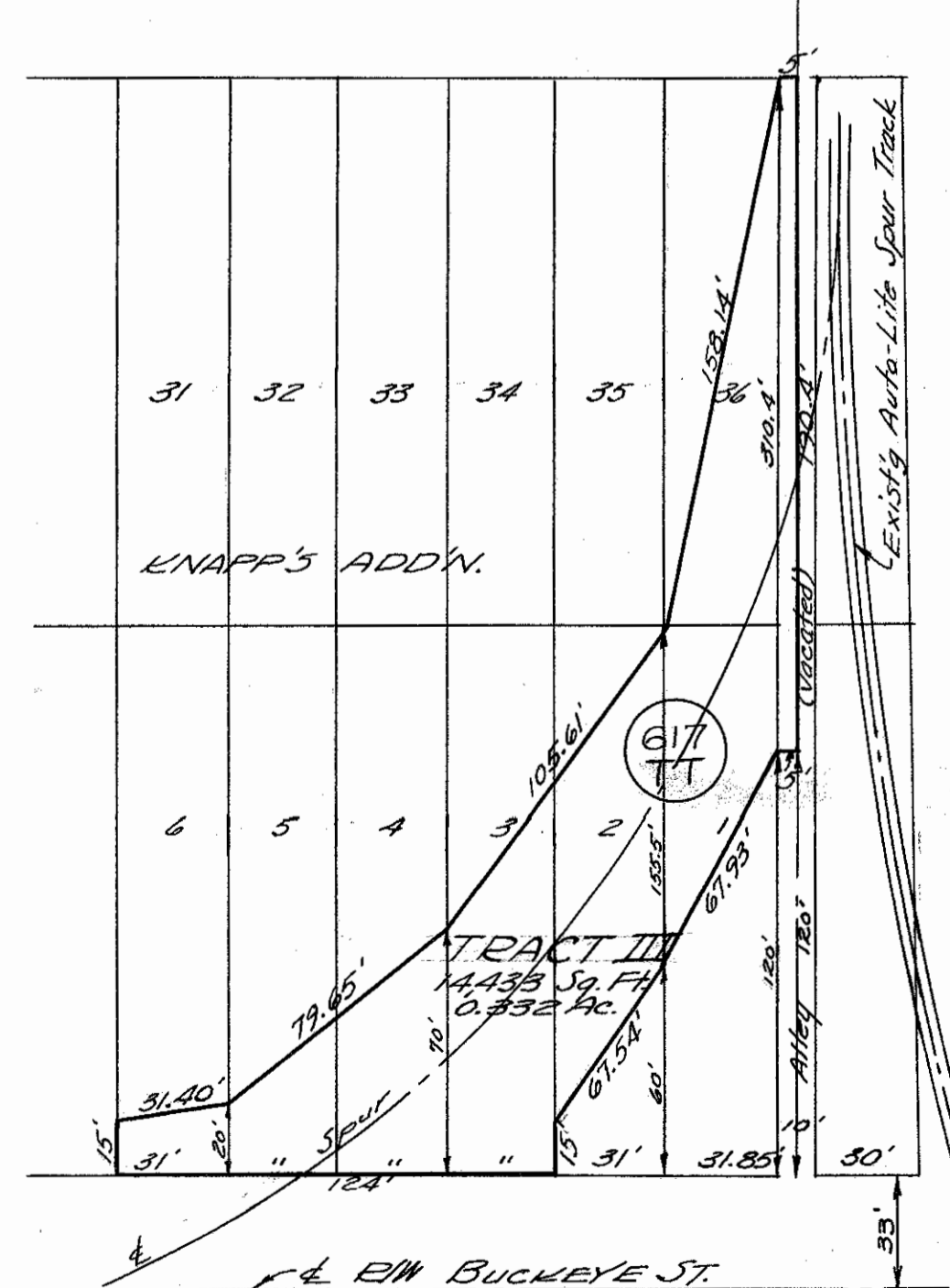
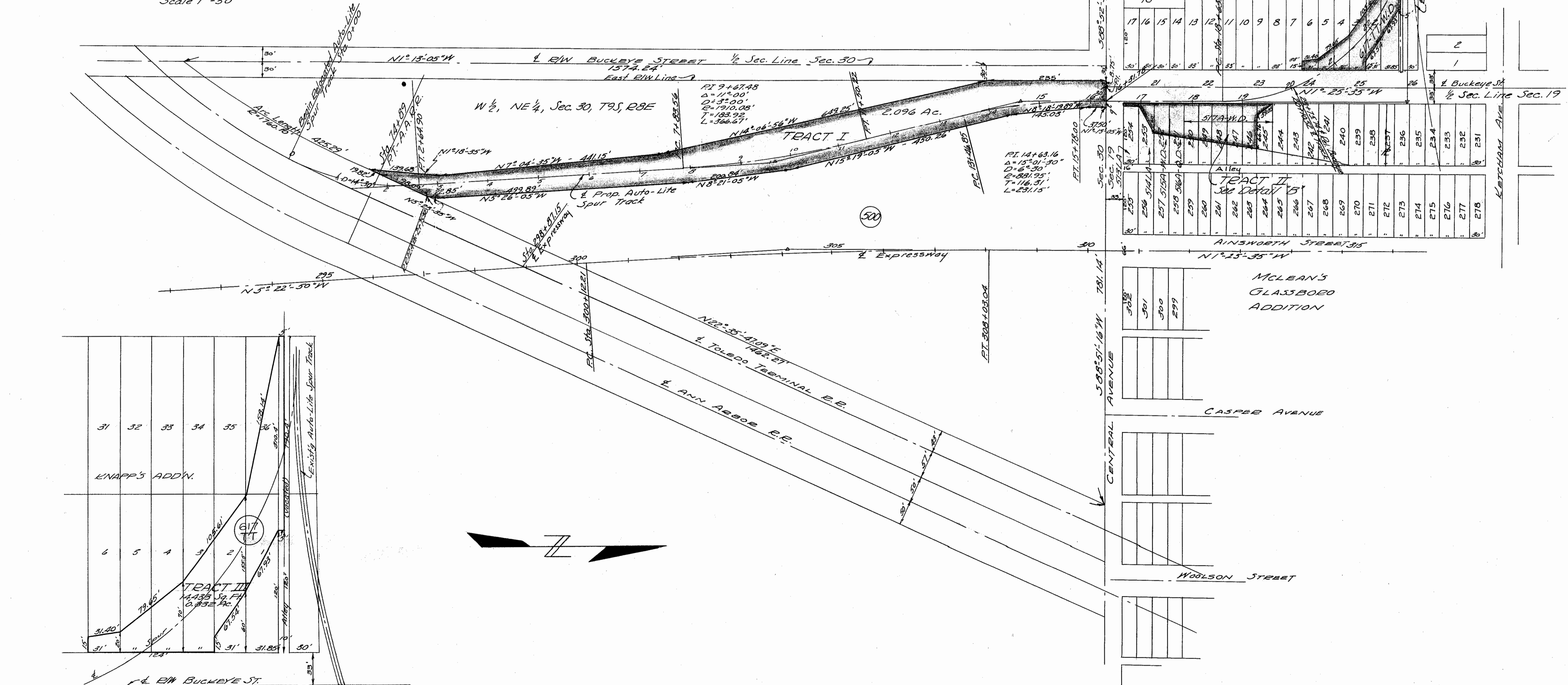
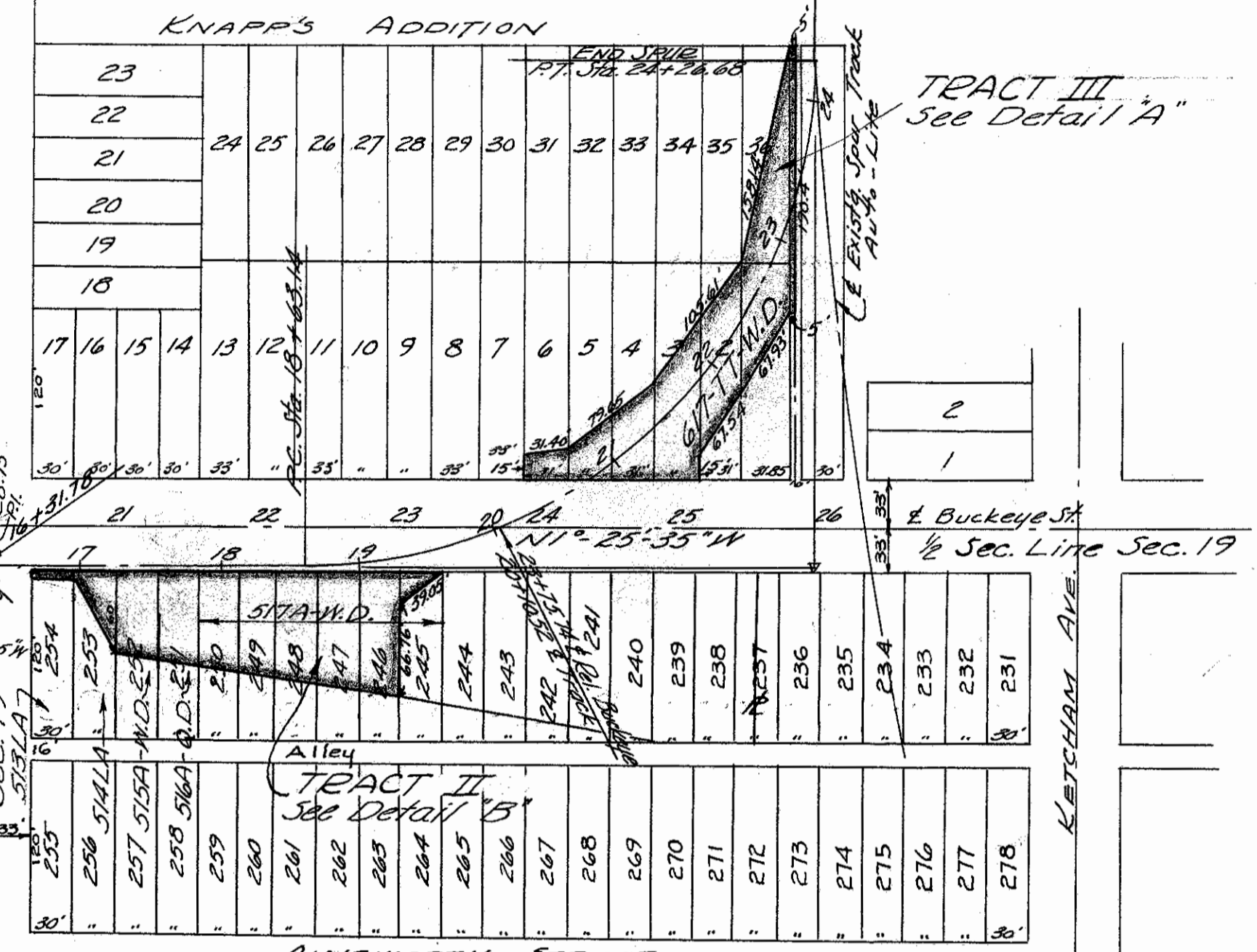


PLAT OF PROPERTY DEEDED TO TOLEDO  
 TERMINAL R.R. FOR THE AUTO-LITE SPUR  
 TRACK IN CONNECTION WITH THE TOLEDO  
 EXPRESSWAY SYSTEM PART 10 ACQUIRED  
 IN CONNECTION WITH LU120R-3.93(LU24A-4.04)  
 Parcels 500W.D., 515A-W.D., 516A-Q.D., 517A-W.D.,  
 and 617TT-W.D.

June 30, 1959  
 Scale: 1"=100'



DETAIL "B"  
 Scale 1"=50'

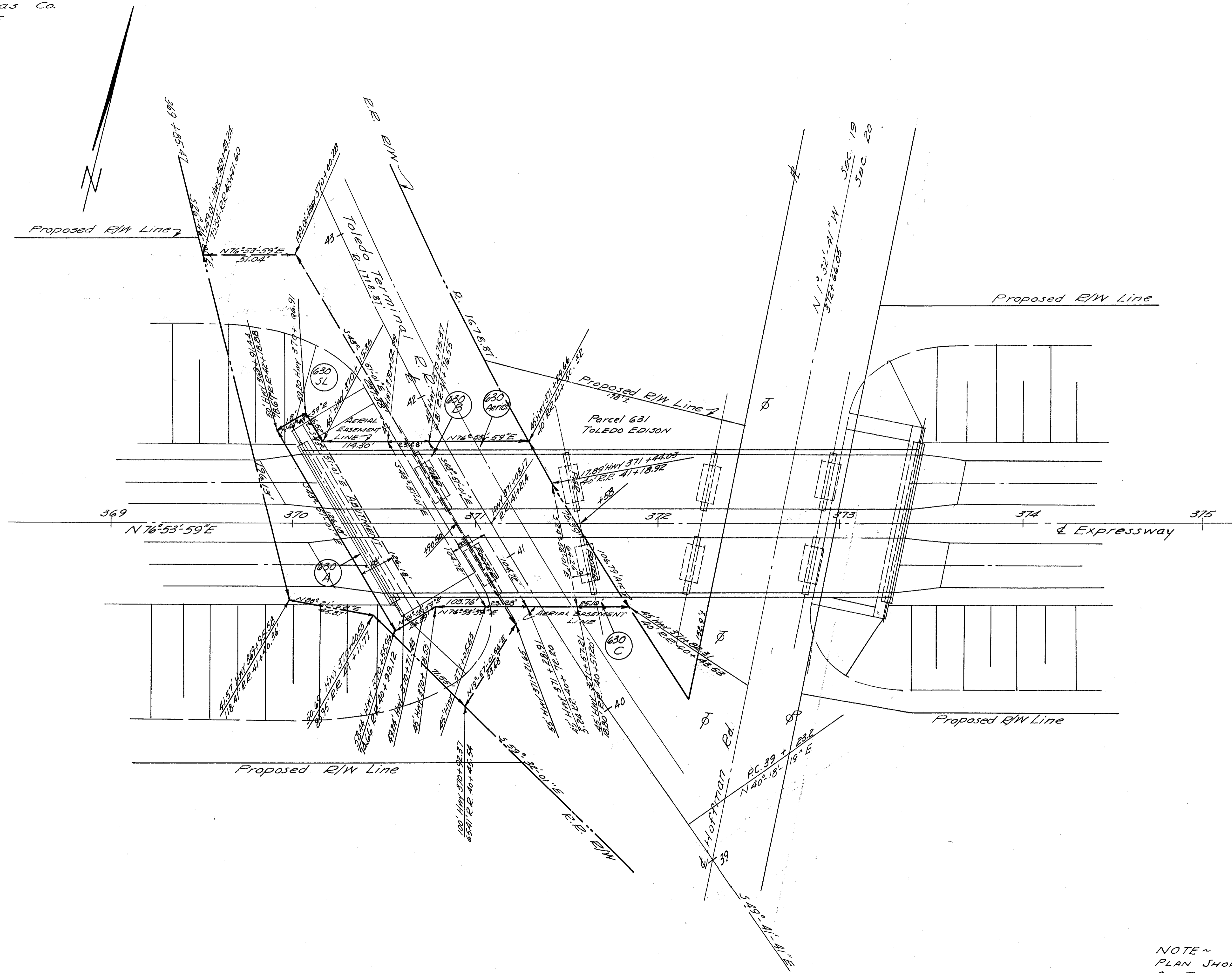


DETAIL "A"  
 Scale 1"=50'

Scanned  
July 1997

DATE	BY	REVISION	TYPE
2	ODOT		FUND

Washington Twp. Lucas Co.  
NE 1/4 Sec. 19 T 9 S R 8 E



TOLEDO TERMINAL R.R.

- 630 A Cont. 0.052 Ac. ±
- 630 B Cont. 0.048 Ac. ±
- 630 C Cont. 0.018 Ac. ±
- 630 D Cont. 0.438 Ac. ±
- 630 E Cont. 0.287 Ac. ±

NOTE ~  
 PLAN SHOWING HIGHWAY CONSTRUCTION  
 ON TOLEDO TERMINAL RAILROAD PROPERTY.  
 AT BRIDGE No. 30 TOLEDO EXPRESSWAY

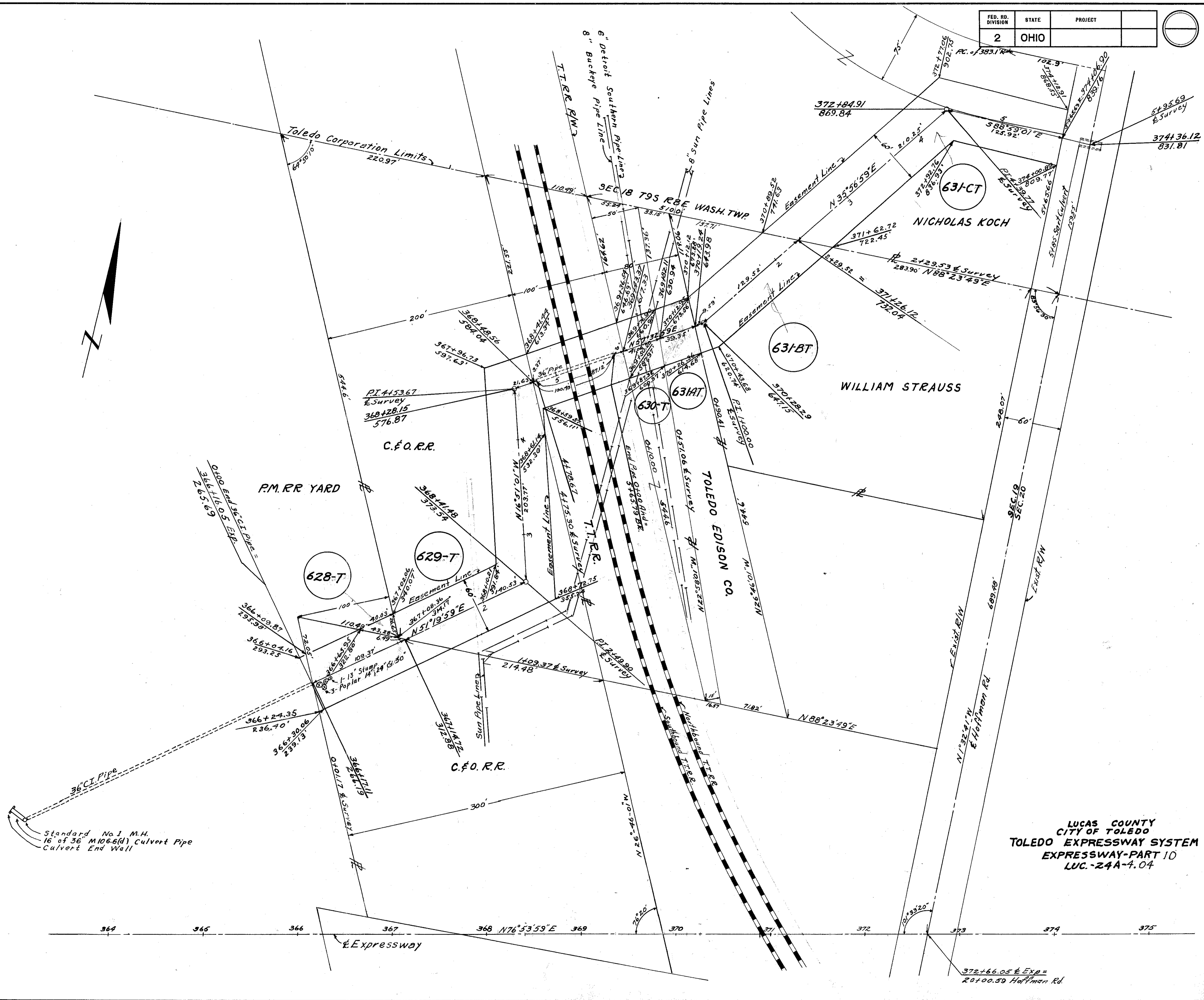
Note:  
 Valuations Survey Stations shown are referred to  
 those shown on Toledo Terminal Railroad  
 E/W Track Map 5-1.

Examined July 1964

FED. RD. DIVISION	STATE	PROJECT
2	OHIO	



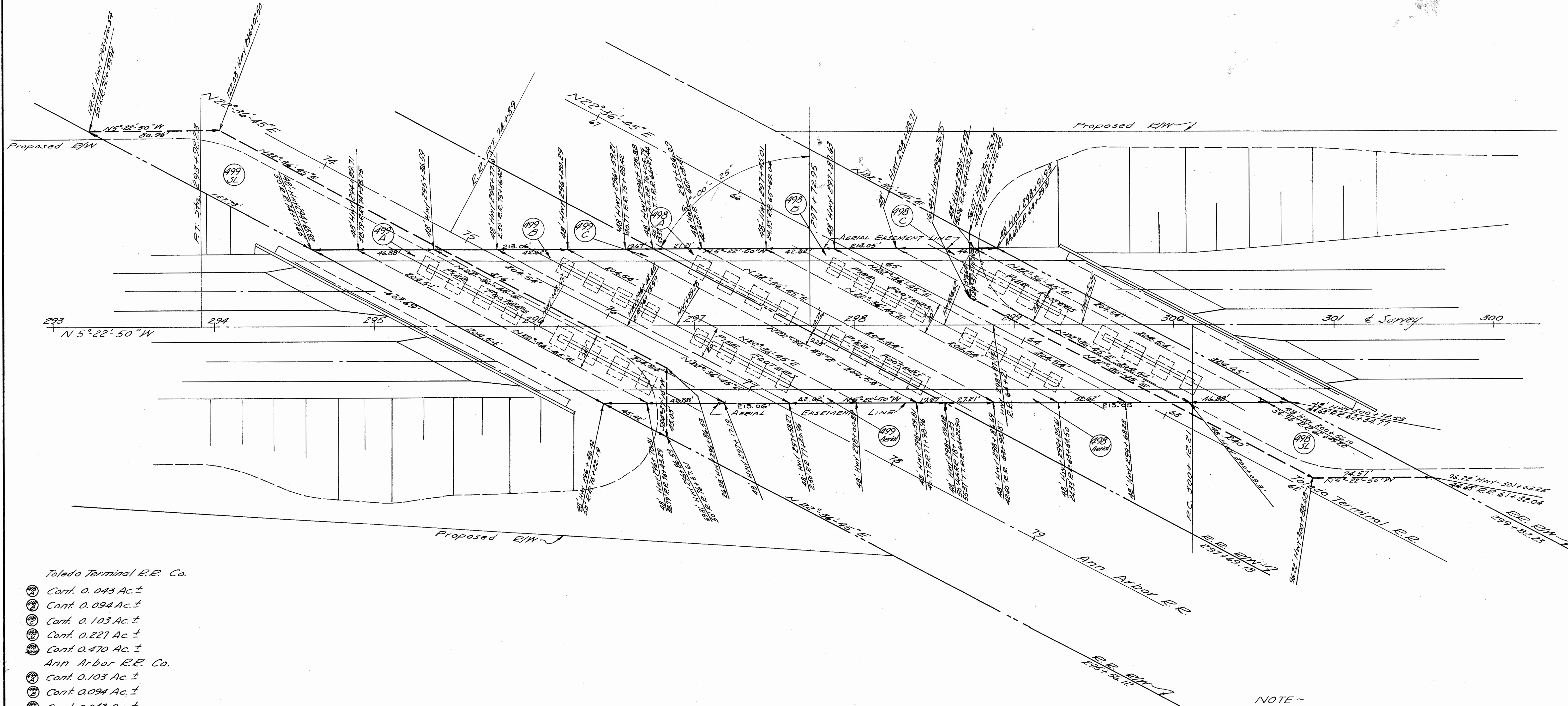
PARCEL	LOT	OWNER OF RECORD
628-T		Pierre Marquette Railroad
629-T		Chesapeake & Ohio Railway Co.
630-T		Toledo Terminal Railroad Co.
631-AT		The Toledo Edison Company
631-BT		Straus, William
631-CT		Koch, Nicholas



LUCAS COUNTY  
CITY OF TOLEDO  
TOLEDO EXPRESSWAY SYSTEM  
EXPRESSWAY-PART 10  
LUC.-24A-4.04

Washington Twp. Lucas Co.  
Sec. 30 T9S R8E

LUC-24-A-4.04  
TOLEDO EXPRESSWAY  
PROJECT 451 PART 10



- Toledo Terminal R.R. Co.
- ⊙ Cont. 0.043 Ac. ±
  - ⊙ Cont. 0.094 Ac. ±
  - ⊙ Cont. 0.103 Ac. ±
  - ⊙ Cont. 0.227 Ac. ±
  - ⊙ Cont. 0.470 Ac. ±
- Ann Arbor R.R. Co.
- ⊙ Cont. 0.103 Ac. ±
  - ⊙ Cont. 0.094 Ac. ±
  - ⊙ Cont. 0.043 Ac. ±
  - ⊙ Cont. 0.316 Ac. ±
  - ⊙ Cont. 0.470 Ac. ±

NOTE -  
PLAN SHOWING HIGHWAY CONSTRUCTION  
ON ANN ARBOR RAILROAD & TOLEDO TERMINAL  
RAILROAD PROPERTY AT BRIDGE No. 23

Note:  
Valuations Survey Stations shown are referred to  
those shown on:  
Ann Arbor R.R. E/W Track Map O-1, S-T2  
Toledo Terminal R.R. E/W Track Map S-1B

01 TRS-101-APG-500

202-0