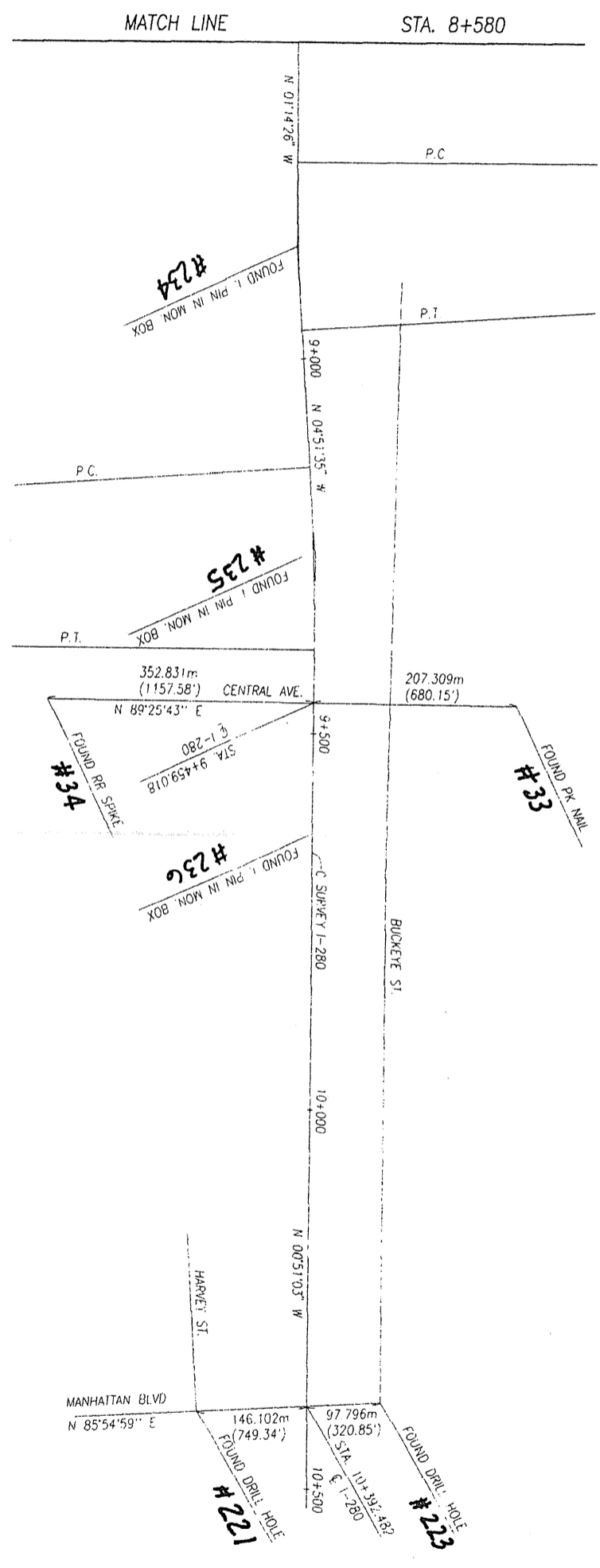


LUC-280-2.591(1.61)  
 CITY OF OREGON  
 SECTION 5 T.10S. R.8E.  
 LUCAS COUNTY, OHIO  
 AND  
 CITY OF TOLEDO  
 SECTION 5 T.10S. R.8E. AND  
 SECTIONS 19,30,31 & 32 T.9S. R.8E.  
 LUCAS COUNTY, OHIO



CURVE DATA:  
 P.I. = STA. 8+851.468  
 Δ = 0° 37' 09" LI  
 R.C. = 3492.752m (11459.16')  
 T = 110.349m (362.04')  
 L.C. = 220.624m (723.83')  
 E = 174.5m (572.7')  
 P.C. = STA. 8+741.119  
 P.I. = STA. 8+961.743

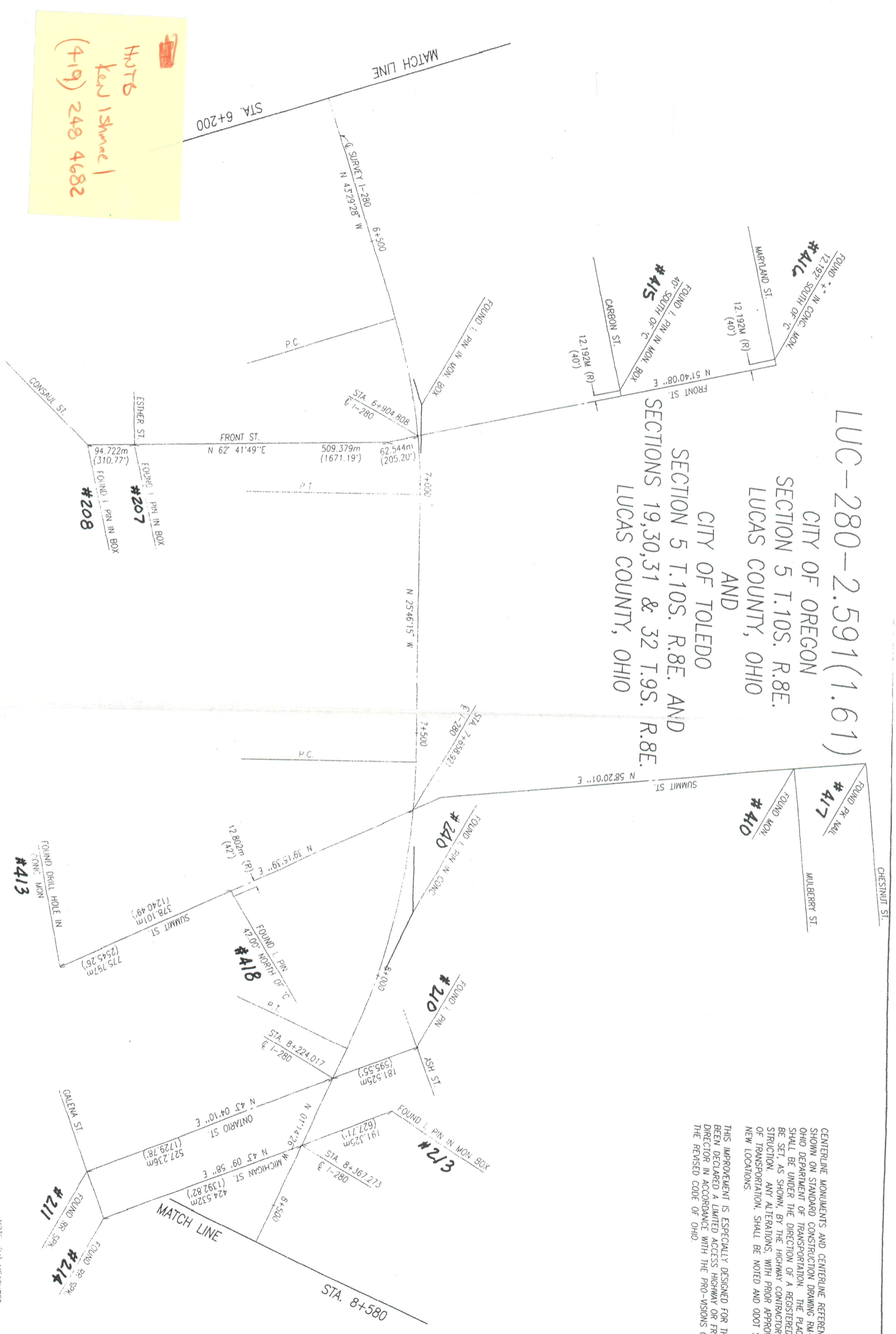
CURVE DATA:  
 P.I. = STA. 9+267.940  
 Δ = 0° 30' 32" RI  
 R.C. = 3482.752m (11459.16')  
 T = 122.244m (401.06')  
 L.C. = 244.387m (801.79')  
 E = 213.9m (702')  
 P.C. = STA. 9+145.692  
 P.I. = STA. 9+390.096

NOTE: ALL MEASUREMENTS CALCULATED AND SHOWN IN METRIC UNITS SHALL TAKE PRECEDENCE OVER VALUES CONVERTED FROM METRIC UNITS TO ENGLISH UNITS.

NOTE: (M) MEASURED  
 (R) RECORDED  
 (C) CALCULATED

THIS IMPROVEMENT IS ESPECIALLY DESIGNED FOR THROUGH TRAFFIC AND IS NOT TO BE USED FOR LIMITED ACCESS HIGHWAY OR FREEWAY BY A DIRECTOR IN ACCORDANCE WITH THE PROVISIONS OF SECTION 5503.02 OF THE REVISED CODE OF OHIO.

LUC-280-2.591(1.61)  
 CITY OF OREGON  
 SECTION 5 T.10S. R.8E.  
 LUCAS COUNTY, OHIO  
 AND  
 CITY OF TOLEDO  
 SECTION 5 T.10S. R.8E. AND  
 SECTIONS 19,30,31 & 32 T.9S. R.8E.  
 LUCAS COUNTY, OHIO



**NOTE**  
 Kern 15 June 1  
 (419) 248 4682

**CURVE DATA:**  
 P.I. = STA. 6+843.802  
 A = 17° 43' 13" RT  
 R.C. = 1164.231m (3819.72)  
 L = 181.487m (595.43)  
 E = 360.076m (1181.35)  
 P.C. = STA. 6+561.815  
 P.T. = STA. 7+021.891

**CURVE DATA:**  
 P.I. = STA. 7+864.596  
 A = 24° 31' 49" RT  
 R.C. = 1397.100m (4583.66)  
 L = 503.727m (996.48)  
 E = 598.146m (1962.42)  
 P.C. = STA. 7+560.869  
 P.T. = STA. 8+159.017

NOTE ALL MEASUREMENTS CALCULATED AND SHOWN IN METRIC UNITS SHALL TAKE PRECEDENCE OVER VALUES CONVERTED FROM METRIC UNITS TO ENGLISH UNITS.

NOTE: (M) MEASURED  
 (R) RECORDED  
 (C) CALCULATED

THIS IMPROVEMENT IS ESPECIALLY DESIGNED FOR THROUGH TRAFFIC AND HAS BEEN DECLARED A LIMITED ACCESS HIGHWAY OR FREEWAY BY ACTION OF THE DIRECTOR IN ACCORDANCE WITH THE PROVISIONS OF SECTION 5511.02 OF THE REVISED CODE OF OHIO.

CENTERLINE MONUMENTS AND CENTERLINE REFERENCE MONUMENTS ARE SHOWN ON STANDARD CONSTRUCTION DRAWING RN-1.JM (REV. 4-8-97) OF OHIO DEPARTMENT OF TRANSPORTATION. THE PLACING OF THE MONUMENTS SHALL BE UNDER THE DIRECTION OF A REGISTERED SURVEYOR AND ARE TO BE SET, AS SHOWN, BY THE HIGHWAY CONTRACTOR AT THE TIME OF CONSTRUCTION. ANY ALTERATIONS, WITH PRIOR APPROVAL OF THE DEPARTMENT OF TRANSPORTATION, SHALL BE NOTED AND ODOT SHALL BE NOTIFIED OF THE NEW LOCATIONS.

