

O.D.O.T. DISTRICT 2 SURVEY OFFICE (USE ONLY)

PERSONNEL

REFERENCE NO. 1

SHEET 1 OF 12

NOTES STONE

DATE 11/29/73

ROUTE IR 280

H.C. MICHALAK

WEATHER COLD

COUNTY LUCAS

R.C. DENNO

TEMP. 37°

TOWNSHIP OREGON

CURTIS

SECTION 9

DWG BY RHOADES PID 02655 (0)

T 10 S R 8 E

TYPE MONUMENT CMON

ON SURFACE - ~~BELOW~~ ON

OFFSET Q PAVEMENT ON LT : RT

- TO - EDGE PAVEMENT

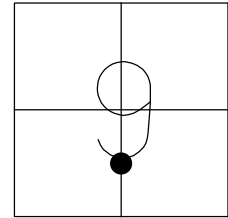
STATION: 77+27.43

HORZ.DATUM: \_\_\_\_\_

GEOID: \_\_\_\_\_

GRID: NORTHING: \_\_\_\_\_

EASTING: \_\_\_\_\_



RECORD: T.S.  
STA. 77+27.43  
11/29/73, IRS

Q S.B. I-280

Q N.B. I-280



O.D.O.T. DISTRICT 2 SURVEY OFFICE (USE ONLY)

PERSONNEL

REFERENCE NO. 2

SHEET 2 OF 12

NOTES STONE

DATE 11/29/73

ROUTE IR 280

H.C. MICHALAK

WEATHER COLD

COUNTY LUCAS

R.C. DENNO  
CURTIS

TEMP. 37°

TOWNSHIP OREGON

DWG BY RHOADES PID 02655 (0)

SECTION 9

T 10 S R 8 E

TYPE MONUMENT CMON

ON SURFACE - ~~BELOW~~ ON

OFFSET  $\odot$  PAVEMENT ON LT : RT

- TO - EDGE PAVEMENT

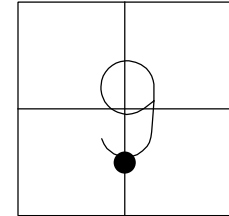
STATION: 79+27.43

HORZ.DATUM: \_\_\_\_\_

GEOID: \_\_\_\_\_

GRID: NORTHING: \_\_\_\_\_

EASTING: \_\_\_\_\_



RECORD: S.C.  
STA. 79+27.43  
11/29/73, IRS

$\odot$  S.B. I-280

$\odot$  N.B. I-280



O.D.O.T. DISTRICT 2 SURVEY OFFICE (USE ONLY)

PERSONNEL

REFERENCE NO. 3

SHEET 3 OF 12

NOTES STONE

DATE 11/29/73

ROUTE IR 280

H.C. MICHALAK

WEATHER COLD

COUNTY LUCAS

R.C. DENNO

TEMP. 37°

TOWNSHIP OREGON

CURTIS

SECTION 9

DWG BY RHOADES PID 02655 (0)

T 10 S R 8 E

TYPE MONUMENT CMON

ON SURFACE - ~~BELOW~~ ON

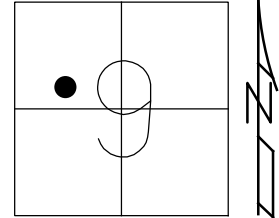
OFFSET Q PAVEMENT ON LT : RT

- TO - EDGE PAVEMENT

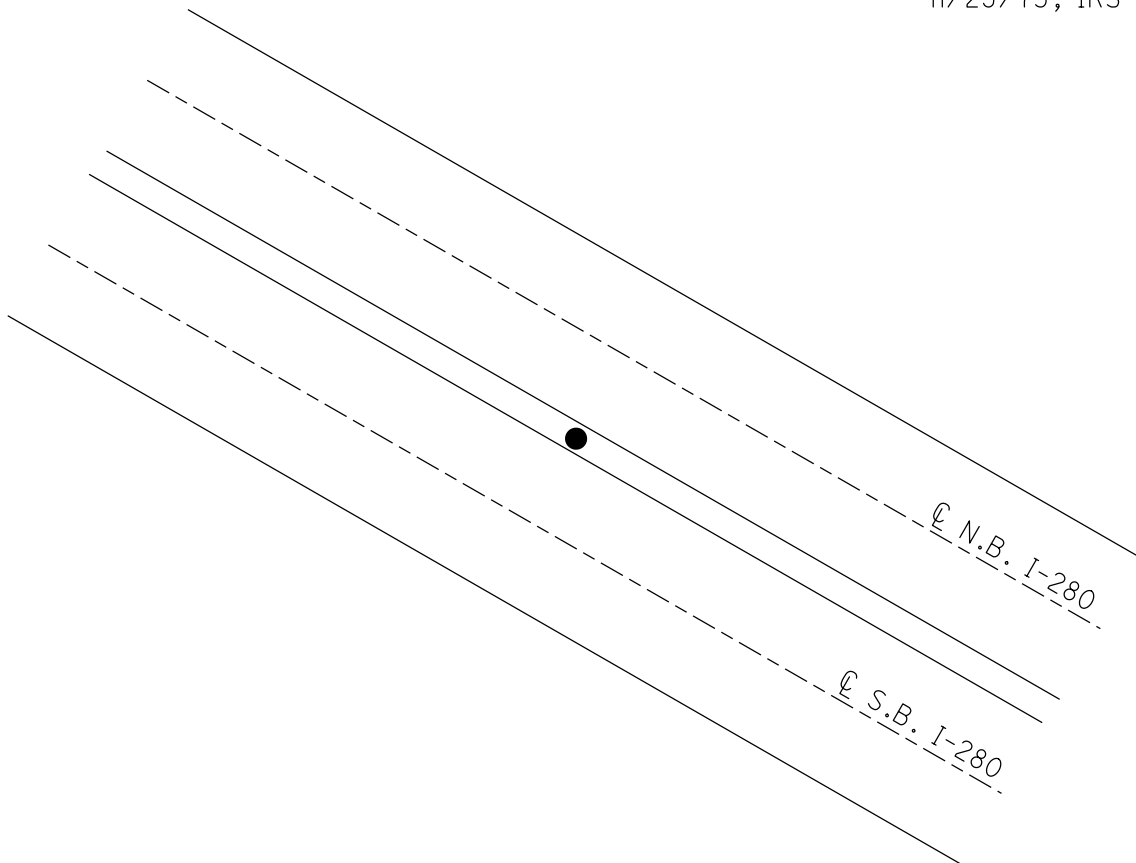
STATION: 99+07.43

HORZ.DATUM: \_\_\_\_\_ GEOID: \_\_\_\_\_

GRID: NORTHING: \_\_\_\_\_ EASTING: \_\_\_\_\_



RECORD: C.S.  
STA. 99+07.43  
11/29/73, IRS



O.D.O.T. DISTRICT 2 SURVEY OFFICE (USE ONLY)

PERSONNEL

REFERENCE NO. 4

SHEET 4 OF 12

NOTES STONE

DATE 11/29/73

ROUTE IR 280

H.C. MICHALAK

WEATHER COLD

COUNTY LUCAS

R.C. DENNO  
CURTIS

TEMP. 37°

TOWNSHIP OREGON

DWG BY RHOADES PID 02655 (0)

SECTION 9

T 10 S R 8 E

TYPE MONUMENT CMON

ON SURFACE - ~~BELOW~~ ON

OFFSET  $\odot$  PAVEMENT ON LT : RT

- TO - EDGE PAVEMENT

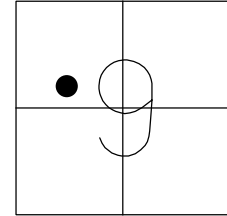
STATION: 101+07.43

HORZ.DATUM: \_\_\_\_\_

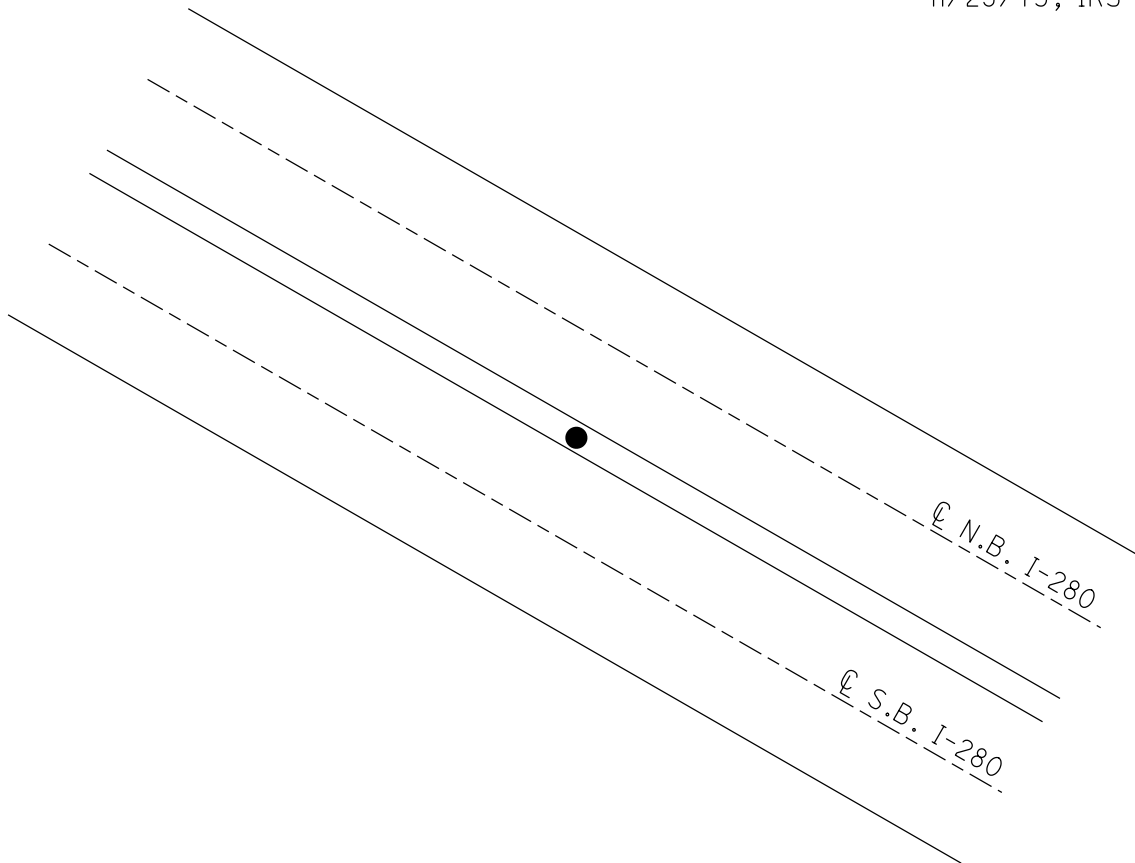
GEOID: \_\_\_\_\_

GRID: NORTHING: \_\_\_\_\_

EASTING: \_\_\_\_\_



RECORD: S.T.  
STA. 101+07.43  
11/29/73, IRS



O.D.O.T. DISTRICT 2 SURVEY OFFICE (USE ONLY)

PERSONNEL

REFERENCE NO. 5

SHEET 5 OF 12

NOTES STONE

DATE 11/29/73

ROUTE IR 280

H.C. MICHALAK

WEATHER COLD

COUNTY LUCAS

R.C. DENNO

TEMP. 37°

TOWNSHIP OREGON

CURTIS

SECTION 9

DWG BY RHOADES

PID 02655 (0)

T 10 S R 8 E

TYPE MONUMENT CMON

ON SURFACE - ~~BELOW~~ ON

OFFSET 0 PAVEMENT ON LT : RT

- TO - EDGE PAVEMENT

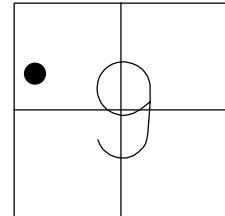
STATION: 113+00.43

HORIZ. DATUM: \_\_\_\_\_

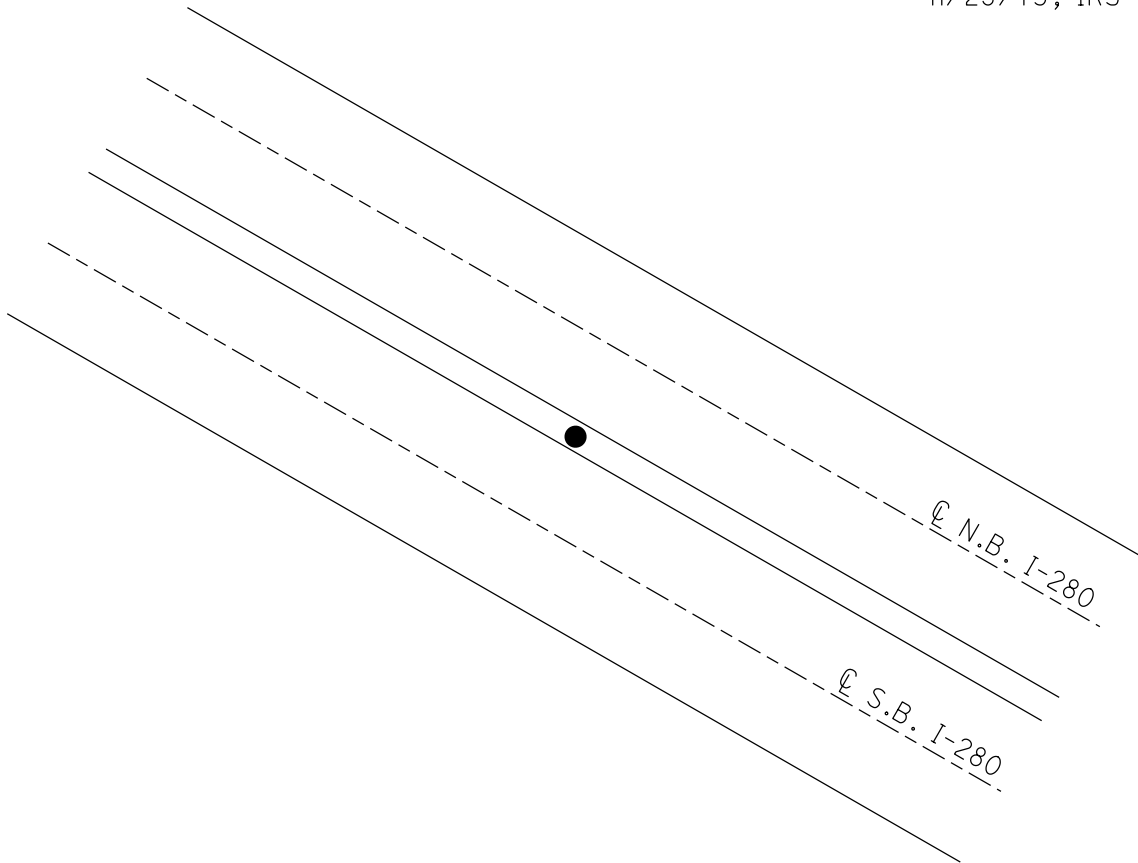
GEOID: \_\_\_\_\_

GRID: NORTHING: \_\_\_\_\_

EASTING: \_\_\_\_\_



RECORD: P.C.  
STA. 113+00.43  
11/29/73, IRS



O.D.O.T. DISTRICT 2 SURVEY OFFICE (USE ONLY)

PERSONNEL

REFERENCE NO. 6

SHEET 6 OF 12

NOTES STONE

DATE 11/29/73

ROUTE IR 280

H.C. MICHALAK

WEATHER COLD

COUNTY LUCAS

R.C. DENNO

TEMP. 37°

TOWNSHIP OREGON

CURTIS

SECTION 8

DWG BY RHOADES PID 02655 (0)

T 10 S R 8 E

TYPE MONUMENT CMON

ON SURFACE - ~~BELOW~~ ON

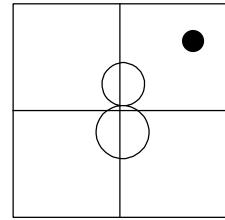
OFFSET  $\phi$  PAVEMENT ON LT : RT

- TO - EDGE PAVEMENT

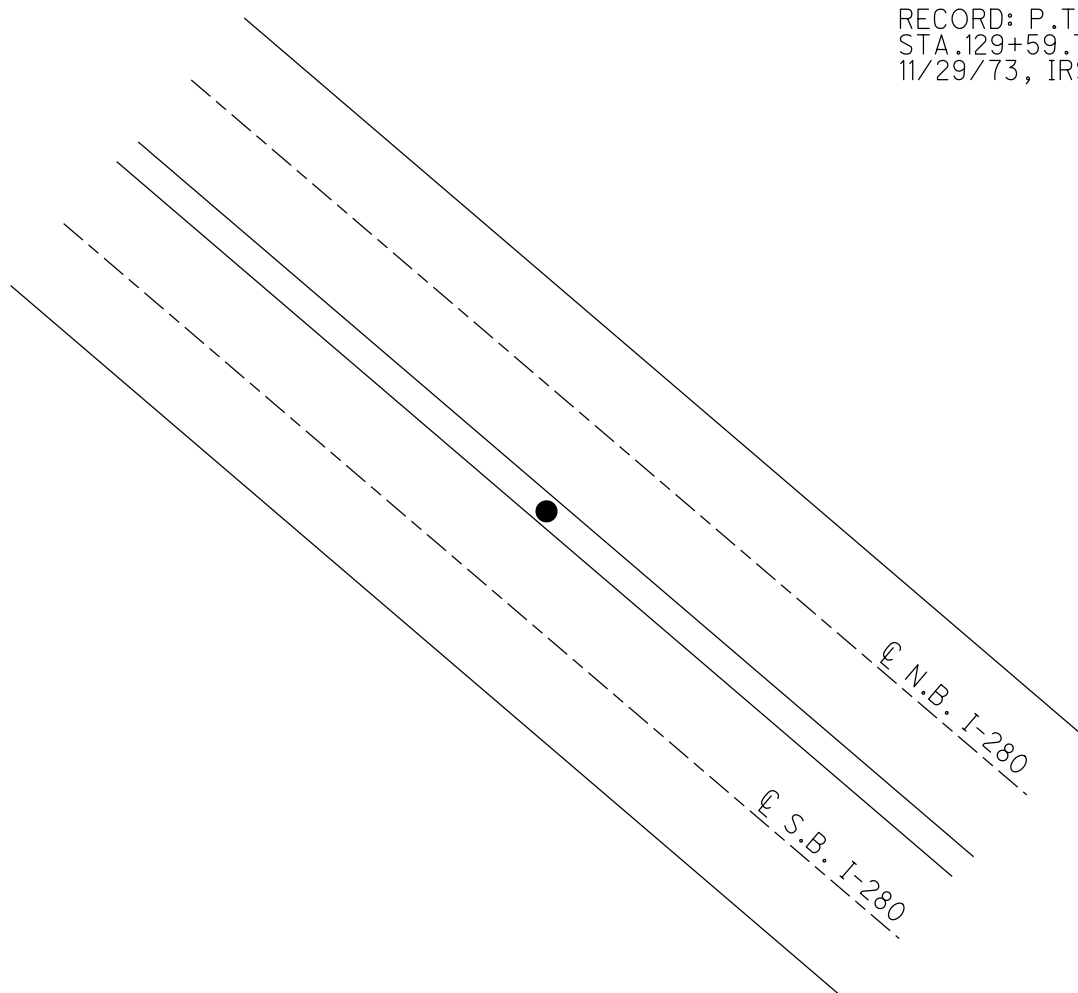
STATION: 129+59.75

HORZ. DATUM: \_\_\_\_\_ GEOID: \_\_\_\_\_

GRID: NORTHING: \_\_\_\_\_ EASTING: \_\_\_\_\_



RECORD: P.T.  
STA. 129+59.75  
11/29/73, IRS



O.D.O.T. DISTRICT 2 SURVEY OFFICE (USE ONLY)

PERSONNEL

REFERENCE NO. 7

SHEET 7 OF 12

NOTES STONE  
H.C. MICHALAK  
R.C. DENNO  
CURTIS

DATE 11/30/73  
WEATHER COLD  
TEMP. 32°

ROUTE IR 280  
COUNTY LUCAS  
TOWNSHIP OREGON  
SECTION 5

DWG BY RHOADES PID 02655 (0)

T 10 S R 8 E

TYPE MONUMENT CMON

ON SURFACE - ~~BELOW~~ ON

OFFSET ☉ PAVEMENT ON          LT : RT

         TO          EDGE PAVEMENT

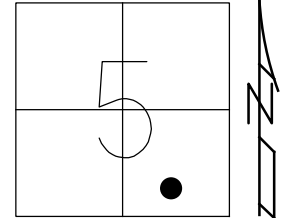
STATION: 148+91.21

HORIZ.DATUM:         

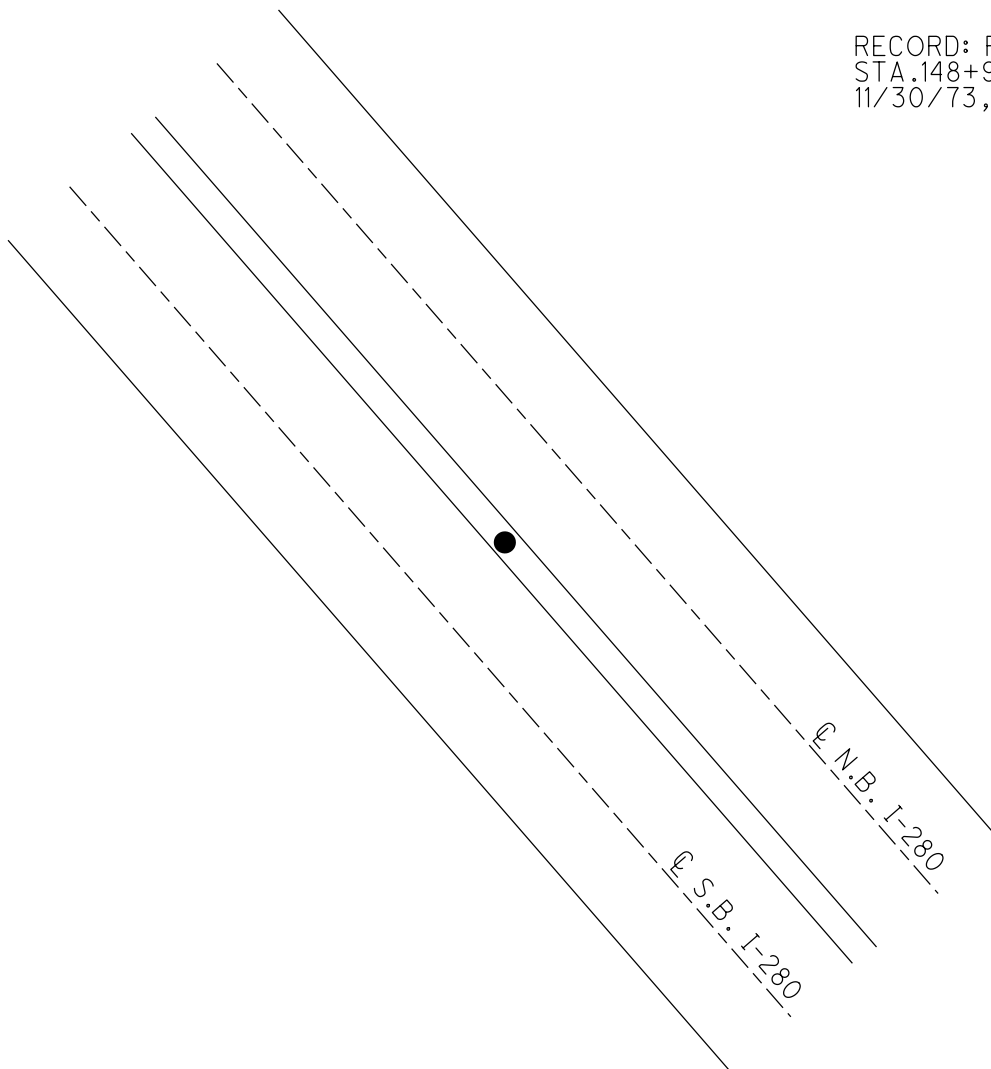
GEOID:         

GRID: NORTHING:         

EASTING:         



RECORD: P.C.  
STA.148+91.31  
11/30/73, IRS



O.D.O.T. DISTRICT 2 SURVEY OFFICE (USE ONLY)

PERSONNEL

REFERENCE NO. 8

SHEET 8 OF 12

NOTES STONE DATE 11/30/73  
H.C. MICHALAK WEATHER COLD  
R.C. DENNO TEMP. 32°  
CURTIS

ROUTE IR 280  
COUNTY LUCAS  
TOWNSHIP OREGON  
SECTION 5

DWG BY RHOADES PID 02655 (0)

T 10 S R 8 E

TYPE MONUMENT CMON

ON SURFACE - ~~BELOW~~ ON

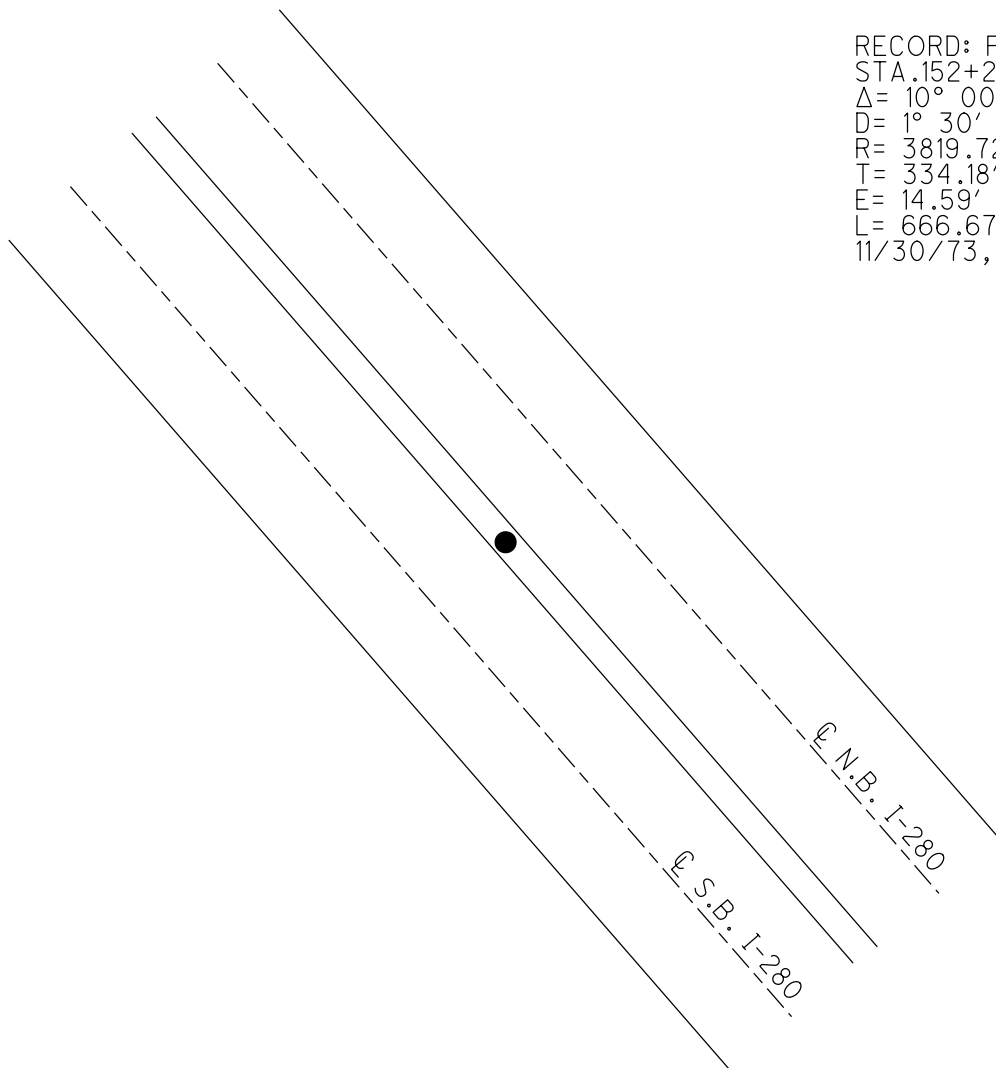
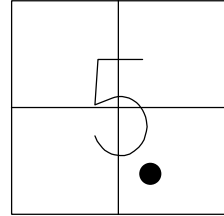
OFFSET ☐ PAVEMENT ON \_\_\_\_\_ LT : RT

- TO - EDGE PAVEMENT

STATION: 152+25.39

HORZ.DATUM: \_\_\_\_\_ GEOID: \_\_\_\_\_

GRID: NORTHING: \_\_\_\_\_ EASTING: \_\_\_\_\_



RECORD: P.I.  
STA. 152+25.39  
 $\Delta = 10^{\circ} 00' 00''$   
 $D = 1^{\circ} 30' 00''$   
R = 3819.72'  
T = 334.18'  
E = 14.59'  
L = 666.67'  
11/30/73, IRS

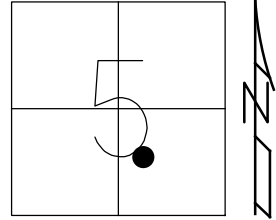


O.D.O.T. DISTRICT 2 SURVEY OFFICE (USE ONLY)

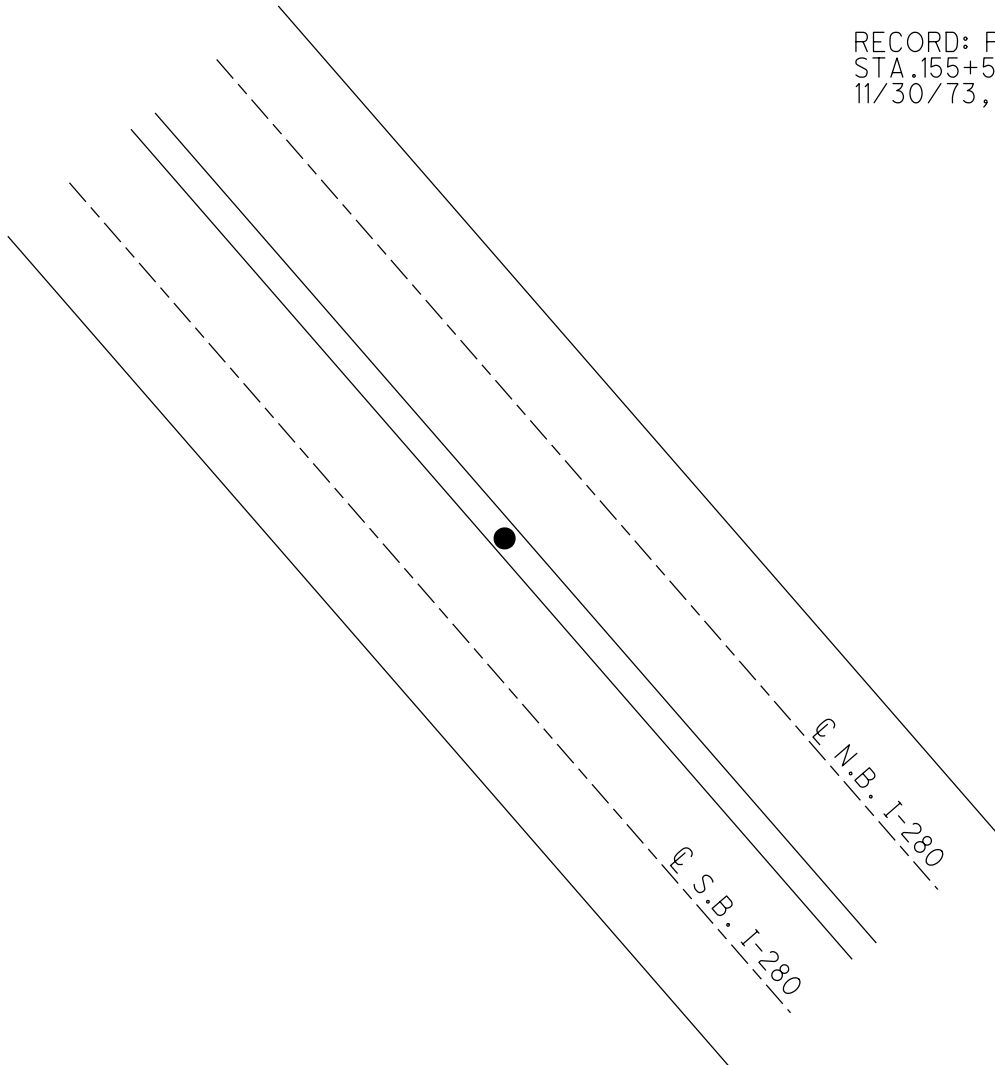
PERSONNEL \_\_\_\_\_ REFERENCE NO. 9 SHEET 9 OF 12  
NOTES STONE DATE 11/30/73 ROUTE IR 280  
H.C. MICHALAK WEATHER COLD COUNTY LUCAS  
R.C. DENNO TEMP. 32° TOWNSHIP OREGON  
CURTIS SECTION 5  
DWG BY RHOADES PID 02655 (0) T 10 S R 8 E

TYPE MONUMENT CMON  
ON SURFACE - ~~BELOW~~ ON  
OFFSET ☉ PAVEMENT ON \_\_\_\_\_ LT : RT  
- TO - EDGE PAVEMENT  
STATION: 155+57.88

HORZ.DATUM: \_\_\_\_\_ GEOID: \_\_\_\_\_  
GRID: NORTHING: \_\_\_\_\_ EASTING: \_\_\_\_\_



RECORD: P.T.  
STA. 155+57.88  
11/30/73, IRS



O.D.O.T. DISTRICT 2 SURVEY OFFICE (USE ONLY)

PERSONNEL

REFERENCE NO. 10

SHEET 10 OF 12

NOTES STONE

DATE 11/30/73

ROUTE IR 280

H.C. MICHALAK

WEATHER COLD

COUNTY LUCAS

R.C. DENNO

TEMP. 37°

TOWNSHIP OREGON

CURTIS

SECTION 5

DWG BY RHOADES

PID 02655 (0)

T 10 S R 8 E

TYPE MONUMENT CMON

ON SURFACE - ~~BELOW~~ ON

OFFSET ☉ PAVEMENT ON LT : RT

- TO - EDGE PAVEMENT

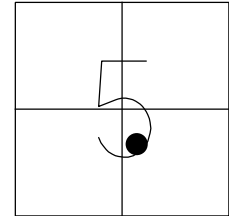
STATION: 158+76.58

HORZ.DATUM: \_\_\_\_\_

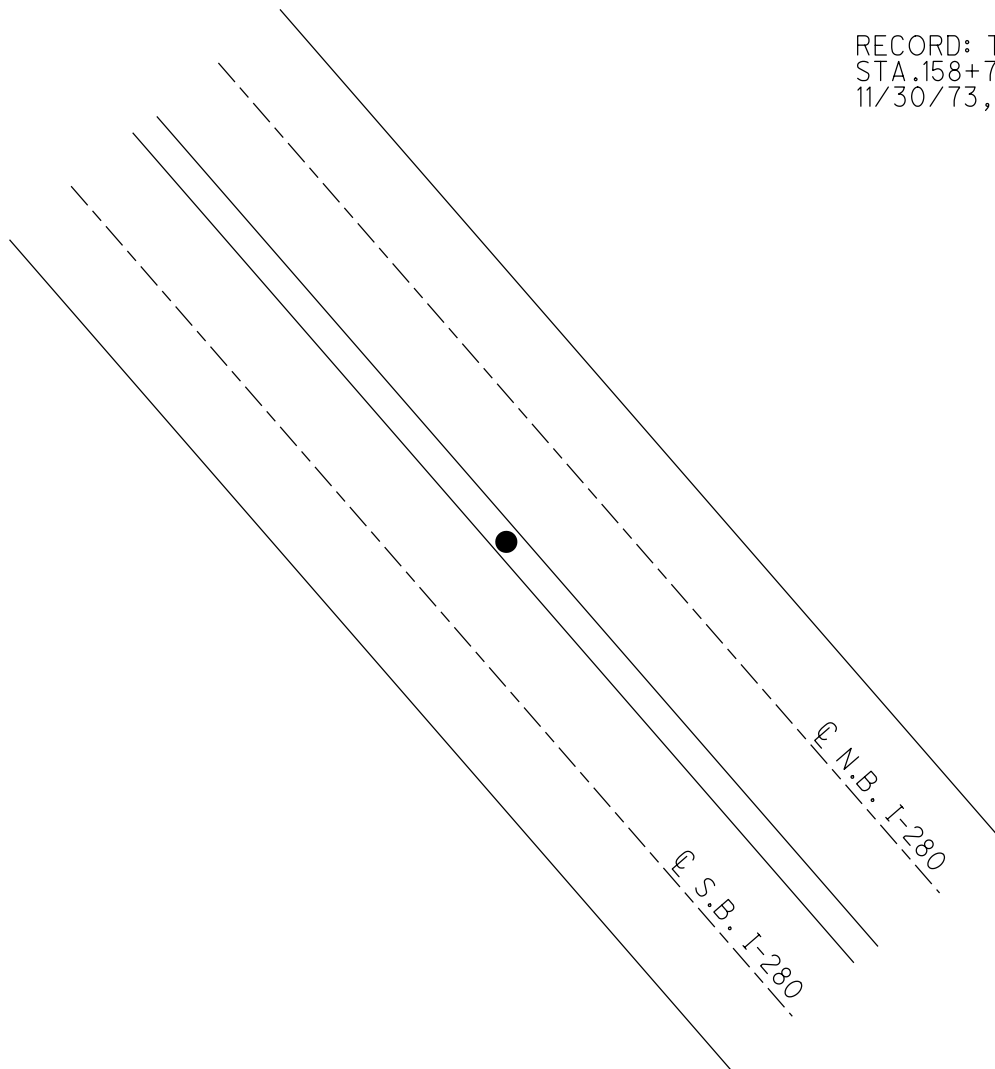
GEOID: \_\_\_\_\_

GRID: NORTHING: \_\_\_\_\_

EASTING: \_\_\_\_\_



RECORD: T.S.  
STA. 158+76.58  
11/30/73, IRS



O.D.O.T. DISTRICT 2 SURVEY OFFICE (USE ONLY)

PERSONNEL

REFERENCE NO. 11

SHEET 11 OF 12

NOTES RADZEMASKI

DATE 8/4/70

ROUTE IR 280

H.C. MICHALAK

WEATHER WARM

COUNTY LUCAS

R.C. SCHROEDER

TEMP. 80°

TOWNSHIP OREGON

FAR

SECTION 5

DWG BY RHOADES

PID \_\_\_\_\_

T 10 S R 8 E

TYPE MONUMENT CMON

ON SURFACE - ~~BELOW~~ ON

OFFSET ☉ PAVEMENT ON \_\_\_\_\_ LT : RT

- TO - EDGE PAVEMENT

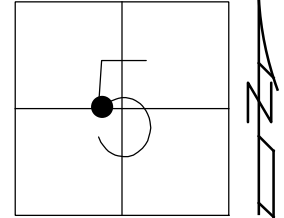
STATION: 168+61.2

HORZ.DATUM: \_\_\_\_\_

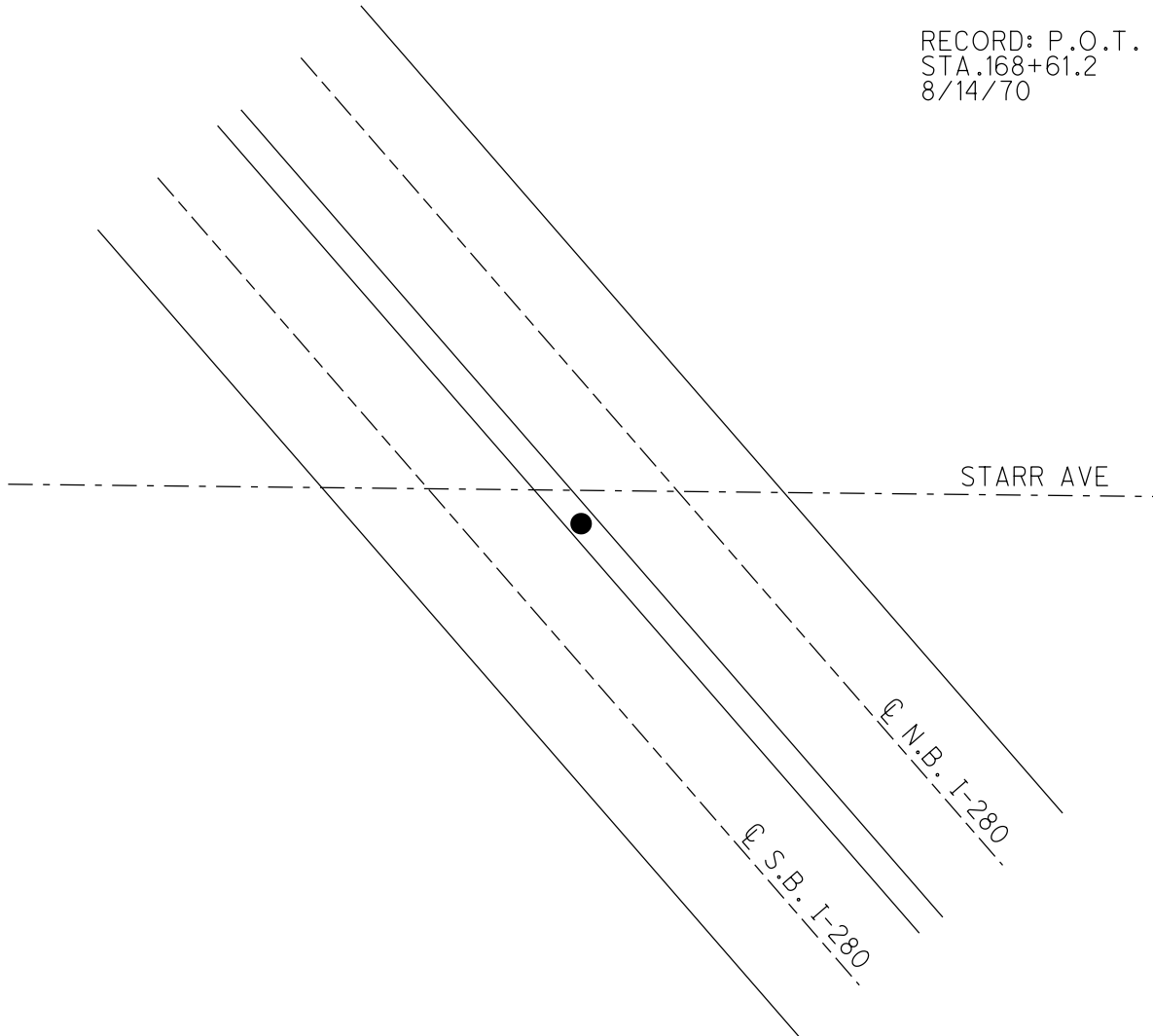
GEOID: \_\_\_\_\_

GRID: NORTHING: \_\_\_\_\_

EASTING: \_\_\_\_\_



RECORD: P.O.T.  
STA.168+61.2  
8/14/70



O.D.O.T. DISTRICT 2 SURVEY OFFICE (USE ONLY)

PERSONNEL

REFERENCE NO. 12

SHEET 12 OF 12

NOTES RADZEMASKI

DATE 8/4/70

ROUTE IR 280

H.C. MICHALAK

WEATHER WARM

COUNTY LUCAS

R.C. SCHROEDER

TEMP. 80°

TOWNSHIP OREGON

FAR

SECTION 5

DWG BY RHOADES

PID \_\_\_\_\_

T 10 S R 8 E

TYPE MONUMENT MONBOX

ON SURFACE - ~~BELOW~~ ON \_\_\_\_\_

OFFSET  $\varnothing$  PAVEMENT ON \_\_\_\_\_ LT : RT

- TO - EDGE PAVEMENT

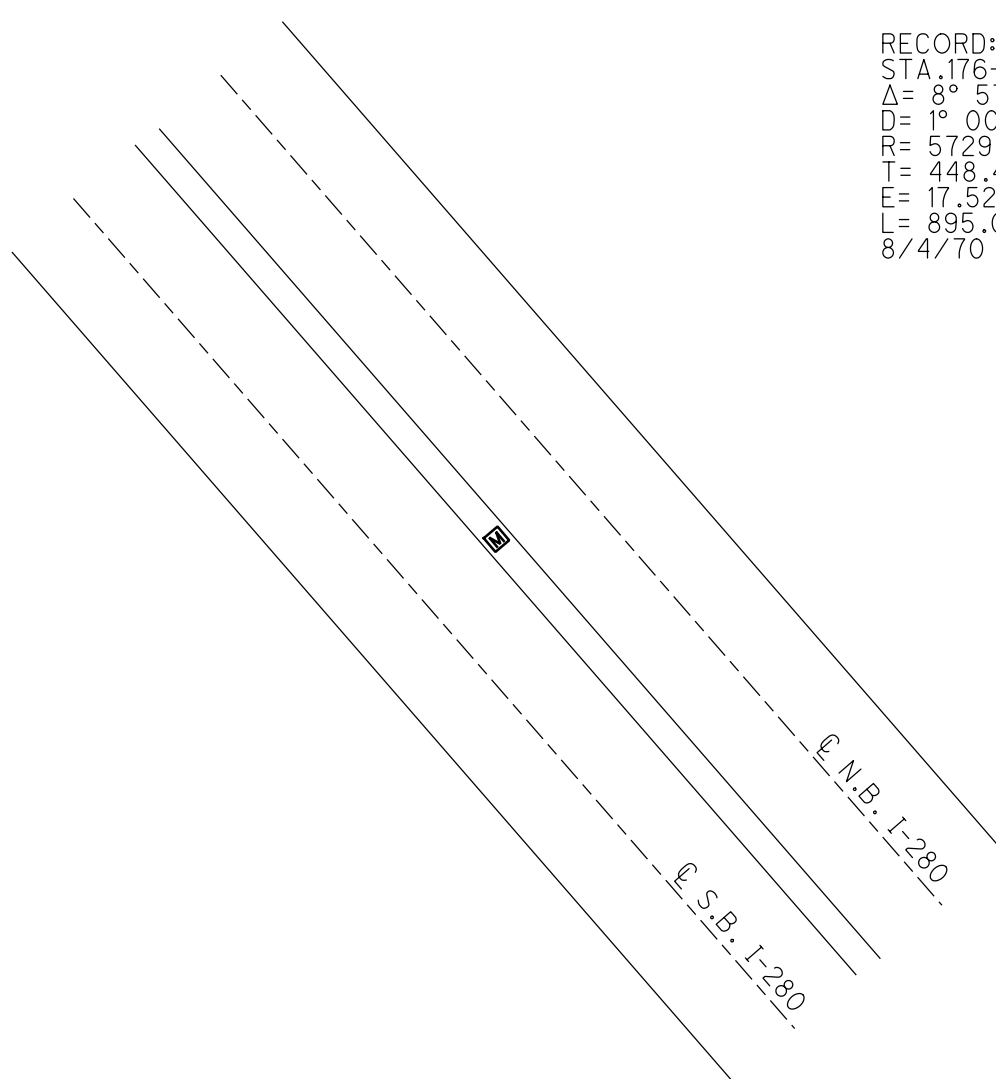
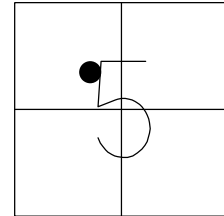
STATION: 176+69.22

HORZ.DATUM: \_\_\_\_\_

GEOID: \_\_\_\_\_

GRID: NORTHING: \_\_\_\_\_

EASTING: \_\_\_\_\_



RECORD: P.I.  
STA. 176+69.22  
 $\Delta = 8^{\circ} 57' 02''$   
 $D = 1^{\circ} 00' 00''$   
 $R = 5729.58'$   
 $T = 448.44'$   
 $E = 17.52'$   
 $L = 895.06'$   
8/4/70