

O.D.O.T. DISTRICT 2 SURVEY OFFICE (USE ONLY)

PERSONNEL

REFERENCE NO. 11

SHEET 11 OF 12

NOTES RADZEMASKI

DATE 8/4/70

ROUTE IR 280

H.C. MICHALAK

WEATHER WARM

COUNTY LUCAS

R.C. SCHROEDER

TEMP. 80°

TOWNSHIP OREGON

FAR

SECTION 5

DWG BY RHOADES

PID \_\_\_\_\_

T 10 S R 8 E

TYPE MONUMENT CMON

ON SURFACE - ~~BELOW~~ ON

OFFSET ☉ PAVEMENT ON \_\_\_\_\_ LT : RT

- TO - EDGE PAVEMENT

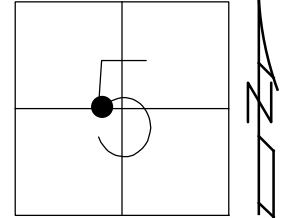
STATION: 168+61.2

HORZ.DATUM: \_\_\_\_\_

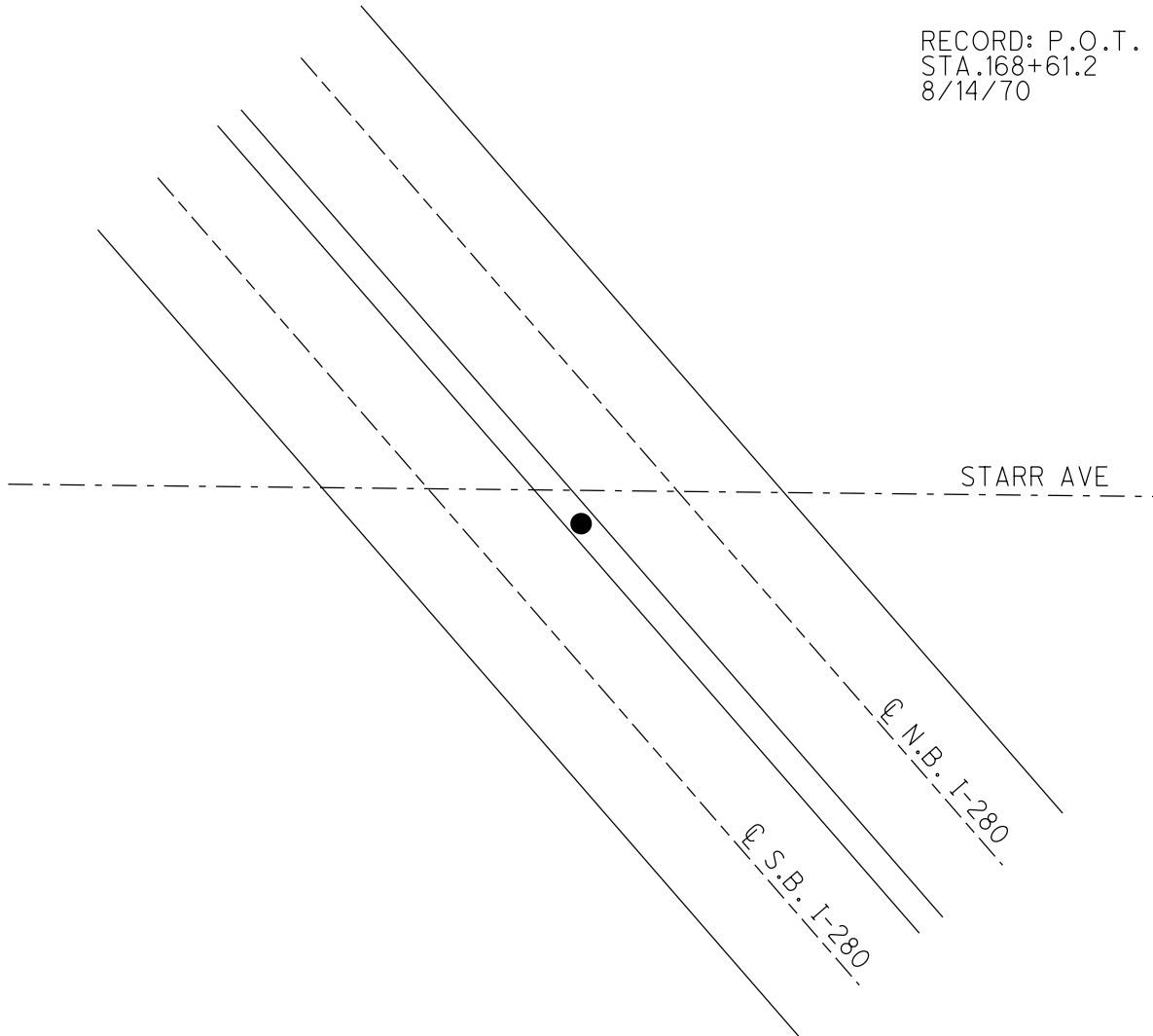
GEOID: \_\_\_\_\_

GRID: NORTHING: \_\_\_\_\_

EASTING: \_\_\_\_\_



RECORD: P.O.T.  
STA.168+61.2  
8/14/70



PERSONNEL	TITLE	PERSONNEL	TITLE	COUNTY	DATE
Radzinski				Lucas	Aug 4, 1970
Michalak				S. R. 280	WEATHER Warm
Schroeder				SEC. 0.00	TEMP. 80°
Far					

DESCRIPTION Ref Ties to P.I. Sta 176+69.22 JOB NO. \_\_\_\_\_

LEFT CENTER LINE RIGHT

