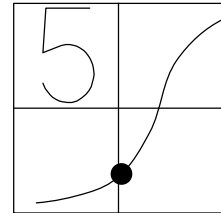


O.D.O.T. DISTRICT 2 SURVEY OFFICE (USE ONLY)

PERSONNEL _____ REFERENCE NO. C SHEET 3 OF 26
 NOTES LEU DATE 8/8/17 ROUTE SR 295
 H.C. _____ WEATHER _____ COUNTY LUCAS
 R.C. _____ TEMP. _____ TOWNSHIP PROVIDENCE
 DWG BY MILLER PID 83894 SECTION 5
 T 5 N R 9 E

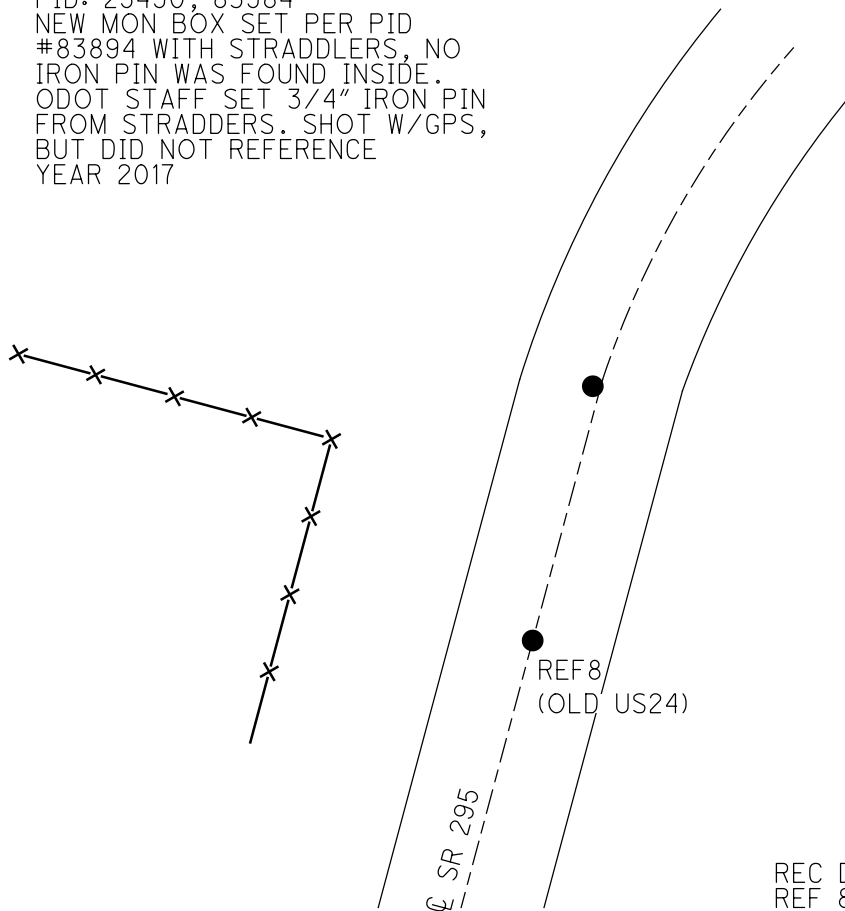
TYPE MONUMENT MONBOX W/ 3/4" IPIN
 ON SURFACE - ~~BELOW~~ ON
 OFFSET Q PAVEMENT 1.2' LT : ~~RT~~
10.4' TO LT EDGE PAVEMENT
 STATION: 37+11.2



HORZ.DATUM: NAD83(2011) GEOID: 2012A
 GRID: NORTHING: 642649.393 EASTING: 1597102.639

NOTE:
 REF: LUC-24-0.00
 PID: 25490, 83984
 NEW MON BOX SET PER PID
 #83894 WITH STRADDLERS, NO
 IRON PIN WAS FOUND INSIDE.
 ODOT STAFF SET 3/4" IRON PIN
 FROM STRADDERS. SHOT W/GPS,
 BUT DID NOT REFERENCE
 YEAR 2017

RECORD: P.C.
 STA.96+96.55
 PRIOR REF 8B-US24
 SET R.R.SPIKE
 1958
 FD R.R.SPIKE
 5" DOWN
 1994
 FD P.K./WASHER
 5/20/97, BVD
 SET PK/WASHER
 10-21-97, SAH



REC DIST. REFC-REF8= 123.80'
 REF 8 ORIGIN UNK. POSSIBLY
 MISTAKEN AS PC FROM 1964 TILL
 1994. POINT NOT RESET.

O.D.O.T. DISTRICT 2 SURVEY OFFICE

PERSONNEL

NOTES LOEHRKE
 H.C. MOSER
 R.C. SLOWAK

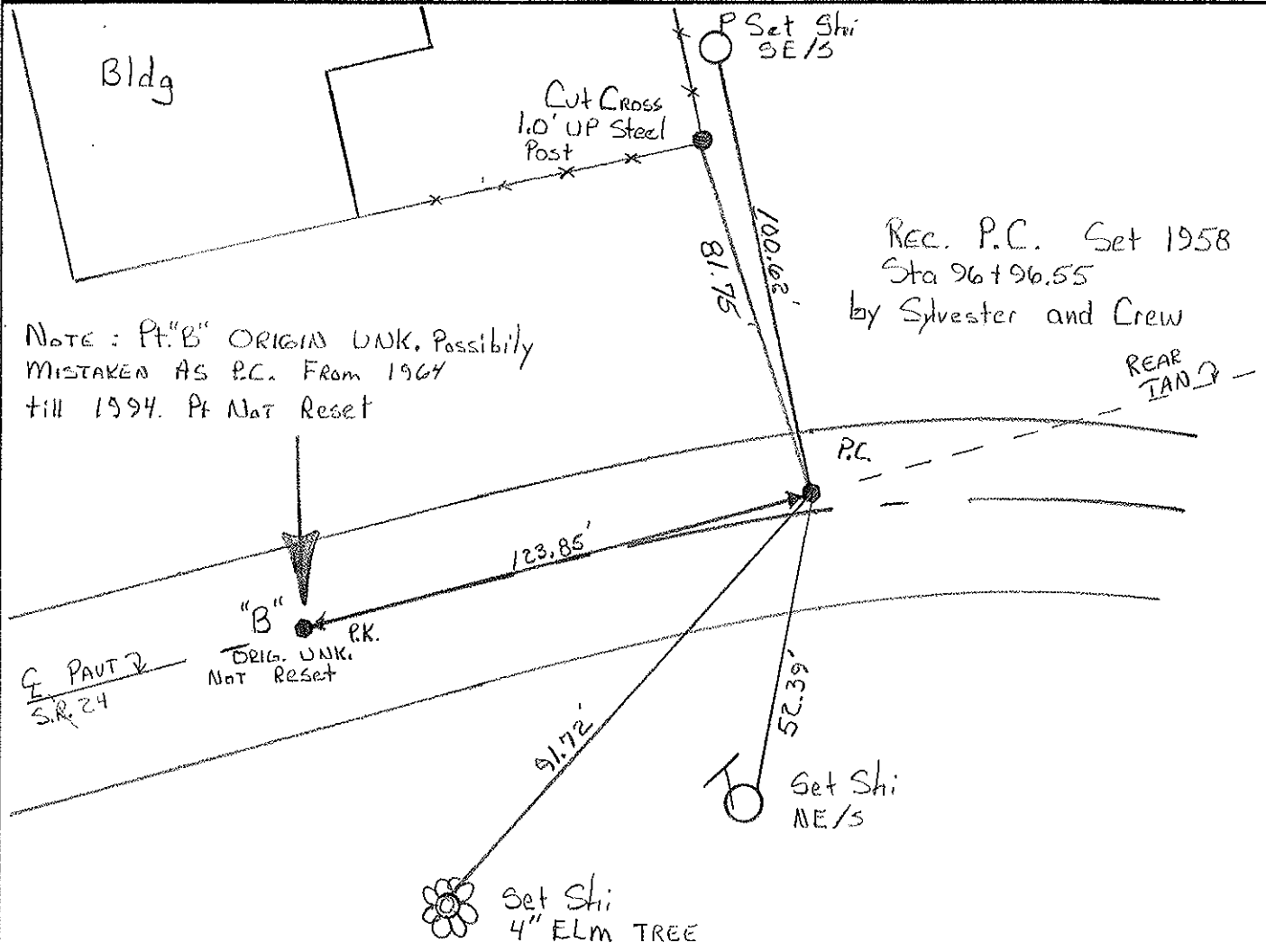
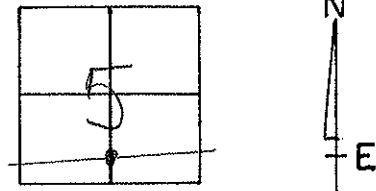
REFERENCE NO. 8
 DATE 10-7-94
 WEATHER Sunny
 TEMP. 66.0

SHEET 10 OF 68

ROUTE U.S. 24
 COUNTY LUCAS
 TOWNSHIP PROVIDENCE
 SECTION 5
 T. S. N. R. 9. E.

Set P.K./WASHER
 5-15-95
 CL

TYPE MONUMENT Lg R.R. Spike
 ON SURFACE - BELOW 4"
 LEFT- & PAV'T. - RIGHT 2.0' Lt
10.4 TO Lt EDGE PAVEMENT
 S.L.M. 96+79



NOTE: Pt. "B" ORIGIN UNK. Possibility
 MISTAKEN AS P.C. FROM 1964
 till 1994. Pt Not Reset

Rec. P.C. Set 1958
 Sta 96+96.55
 by Sylvester and Crew

REAR
 TAD 2

"B" P.K.
 ORIG. UNK.
 Not Reset

E. PAVT 2
 SR 24

Set Shi
 NE 1/5

Set Shi
 4" ELM TREE