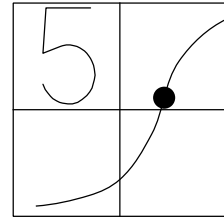


O.D.O.T. DISTRICT 2 SURVEY OFFICE (USE ONLY)

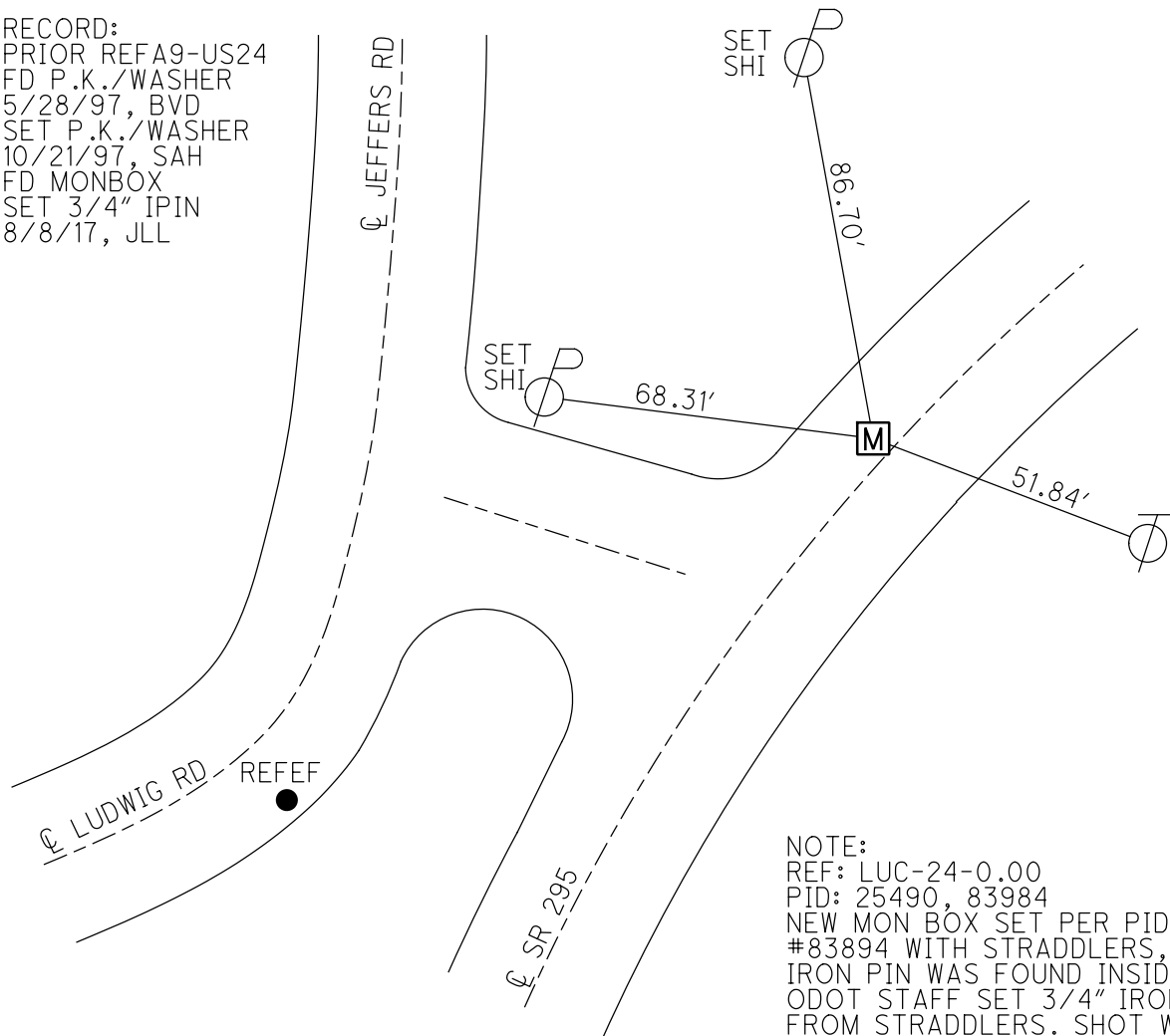
PERSONNEL _____ REFERENCE NO. F SHEET 6 OF 26
 NOTES AUBLE DATE 11/6/20 ROUTE SR 295
 H.C. AUBLE WEATHER SUNNY COUNTY LUCAS
 R.C. O'DONNELL TEMP. 54° TOWNSHIP PROVIDENCE
 DWG BY NIESE PID NO PID SECTION 5
 T 5 N R 9 E

TYPE MONUMENT MONBOX W/ 3/4" IPIN
 ON SURFACE - ~~BELOW~~ ON
 OFFSET Q PAVEMENT 2.3' LT : ~~RT~~
9.6' TO LT EDGE PAVEMENT
 STATION: 43+40.9

HORZ.DATUM: NAD83(2011) GEOID: NAVD88 2012A
 GRID: NORTHING: 643160.151 EASTING: 1597461.960



RECORD:
 PRIOR REFA9-US24
 FD P.K./WASHER
 5/28/97, BVD
 SET P.K./WASHER
 10/21/97, SAH
 FD MONBOX
 SET 3/4" IPIN
 8/8/17, JLL



NOTE:
 REF: LUC-24-0.00
 PID: 25490, 83984
 NEW MON BOX SET PER PID
 #83894 WITH STRADDLERS, NO
 IRON PIN WAS FOUND INSIDE.
 ODOT STAFF SET 3/4" IRON PIN
 FROM STRADDLERS. SHOT W/GPS,
 BUT DID NOT REFERENCE
 YEAR 2017

O.D.O.T. DISTRICT 2 SURVEY OFFICE (USE ONLY)

PERSONNEL _____ REFERENCE NO. F SHEET 6 OF 26
 NOTES LEU DATE 8/8/17 ROUTE SR 295
 H.C. _____ WEATHER _____ COUNTY LUCAS
 R.C. _____ TEMP. _____ TOWNSHIP PROVIDENCE
 DWG BY MILLER PID 83894 SECTION 5
 T 5 N R 9 E

TYPE MONUMENT MONBOX W/ 3/4" IPIN

ON SURFACE - ~~BELOW~~ ON

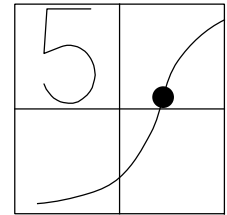
OFFSET \odot PAVEMENT 2.3' LT : ~~RT~~

9.6' TO LT EDGE PAVEMENT

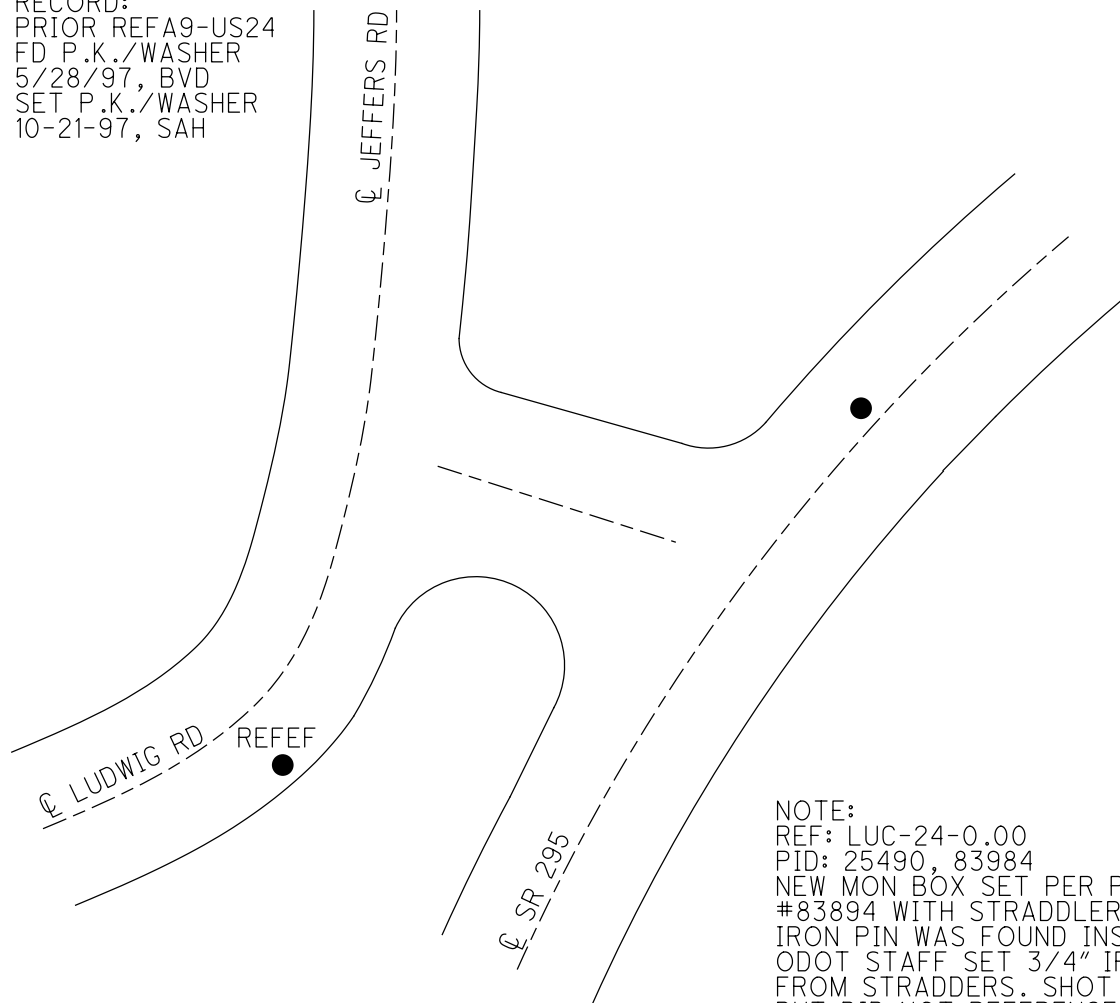
STATION: 43+40.9

HORZ. DATUM: NAD83(2011) GEOID: 2012A

GRID: NORTHING: 643160.183 EASTING: 1597461.980



RECORD:
 PRIOR REFA9-US24
 FD P.K./WASHER
 5/28/97, BVD
 SET P.K./WASHER
 10-21-97, SAH



NOTE:
 REF: LUC-24-0.00
 PID: 25490, 83984
 NEW MON BOX SET PER PID
 #83894 WITH STRADDLERS, NO
 IRON PIN WAS FOUND INSIDE.
 ODOT STAFF SET 3/4" IRON PIN
 FROM STRADDERS. SHOT W/GPS,
 BUT DID NOT REFERENCE
 YEAR 2017

