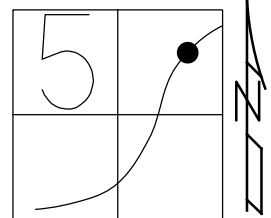


O.D.O.T. DISTRICT 2 SURVEY OFFICE (USE ONLY)

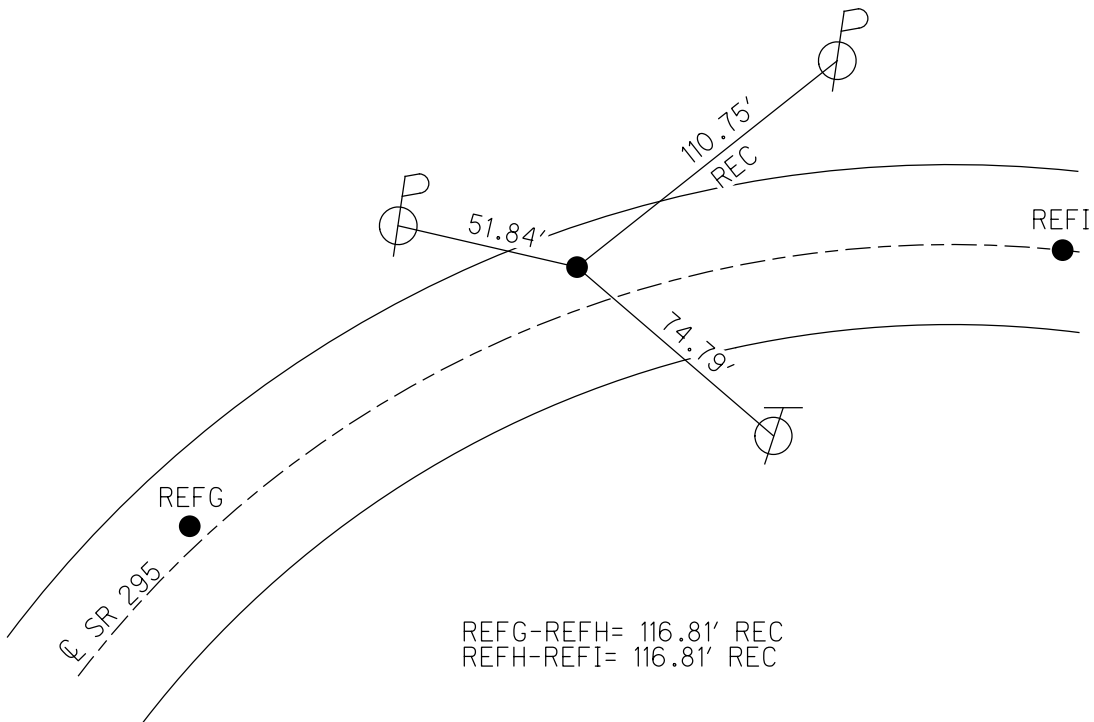
PERSONNEL \_\_\_\_\_ REFERENCE NO. H SHEET 8 OF 26  
 NOTES HUSS DATE 5/28/97 ROUTE SR 295  
 H.C. VAN DUSEN WEATHER CLOUDY/WINDY COUNTY LUCAS  
 R.C. MOSER TEMP. 61° TOWNSHIP PROVIDENCE  
 DWG BY MILLER PID \_\_\_\_\_ SECTION 5  
 T 5 N R 9 E

TYPE MONUMENT PK/WASHER  
 ON SURFACE - ~~BELOW~~ ON \_\_\_\_\_  
 OFFSET  $\text{C}$  PAVEMENT 8.0' LT : ~~RT~~  
4.0' TO LT EDGE PAVEMENT  
 STATION: 55+13

HORIZ.DATUM: NAD83(2011) GEOID: 2012A  
 GRID: NORTHING: \_\_\_\_\_ EASTING: \_\_\_\_\_



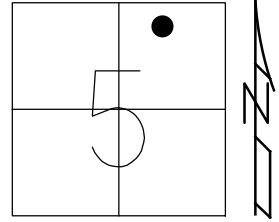
RECORD: P.I.  
 PRIOR REF11-US24  
 FD P.K./WASHER  
 5/28/97, BVD  
 SET P.K./WASHER  
 10-21-97, SAH



O.D.O.T. DISTRICT 2 SURVEY OFFICE (USE ONLY)

PERSONNEL \_\_\_\_\_ REFERENCE NO. 1 SHEET 8 OF 20  
 NOTES HUSS DATE 5/28/97 ROUTE SR 295  
 H.C. VAN DUSEN WEATHER CLOUDY/WINDY COUNTY LUCAS  
 R.C. MOSER TEMP. 61° TOWNSHIP PROVIDENCE  
 SECTION 5  
 DWG BY MILLER PID 83894 T 5 N R 9 E

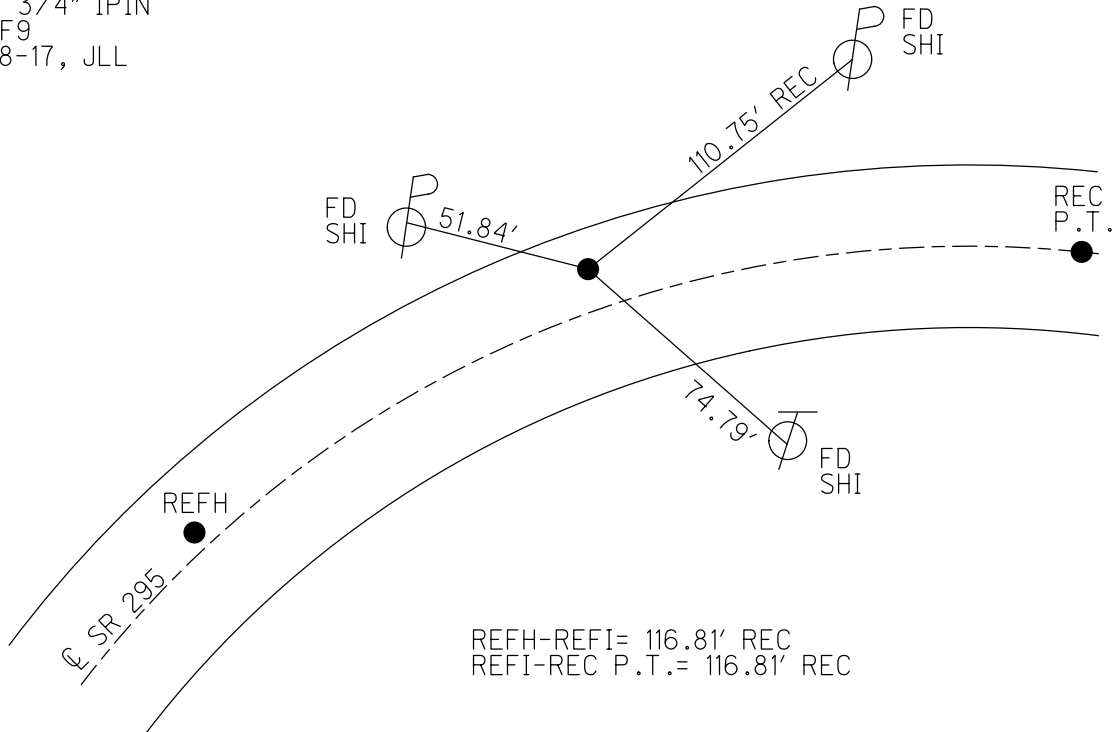
TYPE MONUMENT P.K./WASHER  
 ON SURFACE - ~~BELOW~~ ON  
 OFFSET CL PAVEMENT 8.0' LT : ~~RT~~  
4.0' TO LT EDGE PAVEMENT  
 STATION: 56+28



HORIZ.DATUM: NAD83(2011) GEOID: 12A NAVD88  
 GRID: NORTHING: 644015.987 EASTING: 1598424.279

RECORD: P.I.  
 PRIOR REF11-US24  
 FD P.K./WASHER  
 5/28/97, BVD  
 SET P.K./WASHER  
 10-21-97, SAH  
 FD MONBOX  
 W/ 3/4" IPIN  
 REF9  
 8-8-17, JLL

NOTE:  
 REF: LUC-24-0.00  
 PID: 25490, 83984



# O.D.O.T. DISTRICT 2 SURVEY OFFICE

PERSONNEL \_\_\_\_\_

REFERENCE NO. 11

SHEET 16 OF 68

NOTES S. AUSS

H.C. B. VAN DUSEN

R.C. K. MOSER

DATE 5-28-97

WEATHER PARTLY CLOUDY / WINDY

TEMP. +61°F

ROUTE US-24

COUNTY Lucas

TOWNSHIP Providence

SECTION 5

T 5 N R 9 E

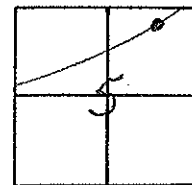
TYPE MONUMENT PK. NAIL & WASHER

ON SURFACE BELOW YES

LEFT-~~C~~ PAV'T. - RIGHT 8.0'

4.0' TO LT. EDGE PAVEMENT

S.L.M. 114 198



*P.I. TO CURVE  
REC!*

*Set PK/WASHER  
10-21-97  
SAH*

