

O.D.O.T. DISTRICT 2 SURVEY OFFICE (USE ONLY)

PERSONNEL

REFERENCE NO. J

SHEET 10 OF 26

NOTES LEU

DATE 8/8/17

ROUTE SR 295

H.C. HOMAN

WEATHER _____

COUNTY LUCAS

R.C. LEU

TEMP. _____

TOWNSHIP PROVIDENCE

DWG BY MILLER PID 83894

SECTION 5

T 5 N R 9 E

TYPE MONUMENT MON BOX W/ 3/4" IPIN

ON SURFACE - ~~BELOW~~ ON _____

OFFSET \varnothing PAVEMENT _____ LT: RT

_____ TO _____ EDGE PAVEMENT

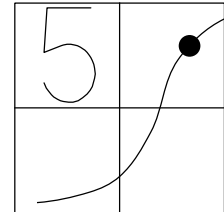
STATION: 66+55

HORZ.DATUM: NAD83(2011)

GEOID: 2012A

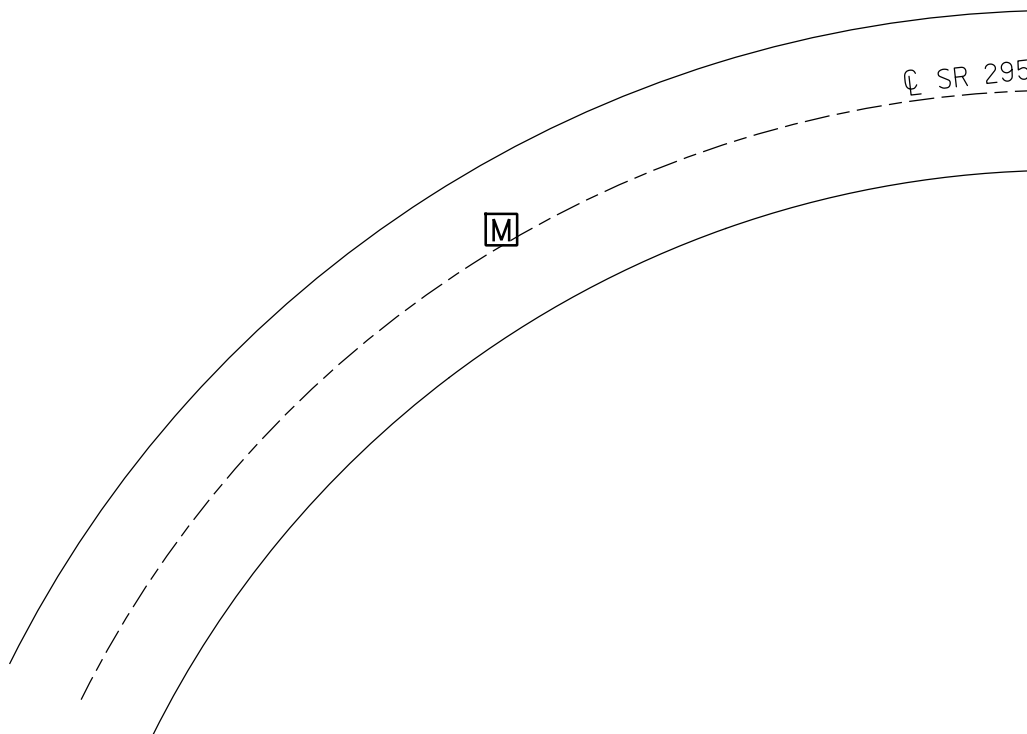
GRID: NORTHING: 644608.390

EASTING: 1599261.606



RECORD:

NOTE: P.C.
REF: LUC-24-0.00
PID: 25490, 83984
NEW MON BOX SET PER PID
#83894 WITH STRADDLERS, NO
IRON PIN WAS FOUND INSIDE.
ODOT STAFF SET 3/4" IRON PIN
FROM STRADDERS. SHOT W/GPS,
BUT DID NOT REFERENCE
YEAR 2017



O.D.O.T. DISTRICT 2 SURVEY OFFICE (USE ONLY)

PERSONNEL _____ REFERENCE NO. J SHEET 9 OF 20
 NOTES HUSS DATE 5/28/97 ROUTE SR 295
 H.C. VAN DUSEN WEATHER CLOUDY/WINDY COUNTY LUCAS
 R.C. MOSER TEMP. 61° TOWNSHIP PROVIDENCE
 _____ SECTION 5
 DWG BY MILLER PID 83894 T 5 N R 9 E

TYPE MONUMENT _____ P.K./WASHER _____

ON SURFACE - ~~BELOW~~ ON _____

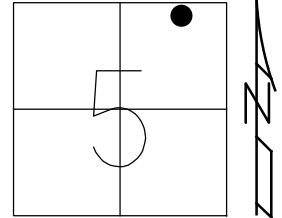
OFFSET \odot PAVEMENT 14.2' LT : ~~RT~~

2.3' TO LT EDGE PAVEMENT

STATION: 66+52

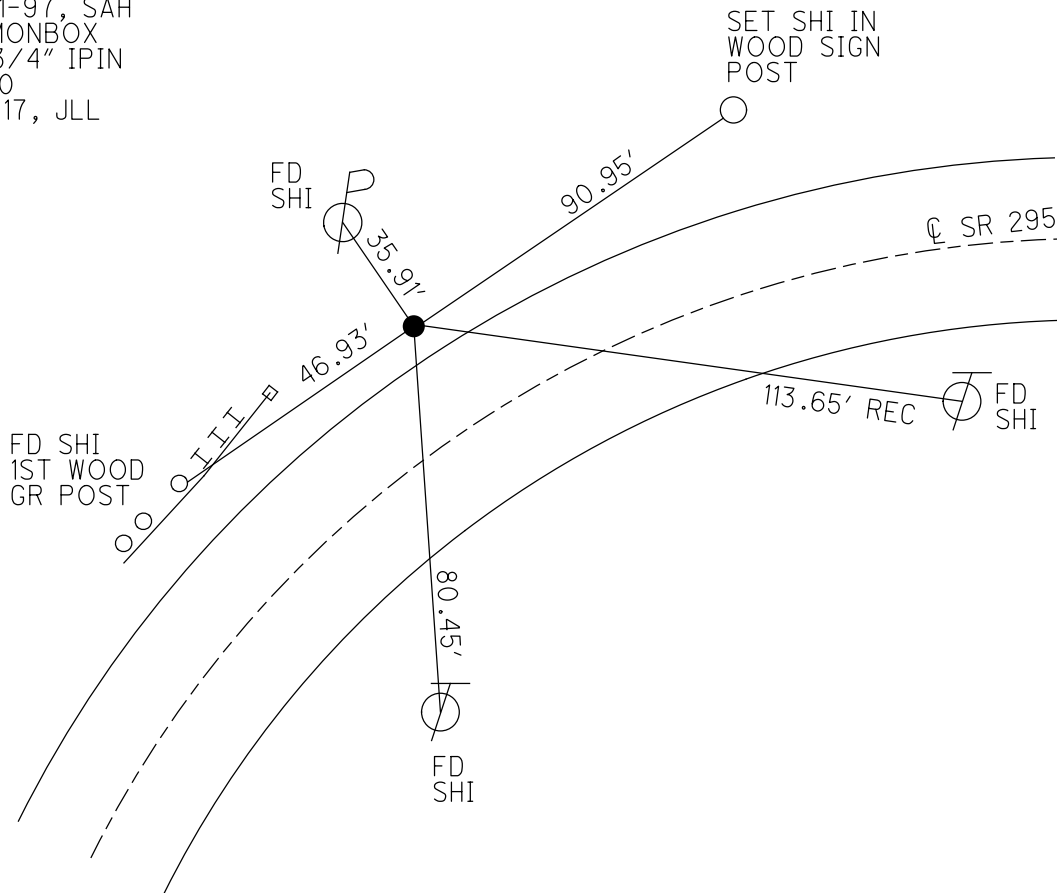
HORZ.DATUM: NAD83(2011) GEOID: 12A NAVD88

GRID: NORTHING: 644608.390 EASTING: 1599261.606



RECORD:
 PRIOR REF13-US24
 FD P.K./WASHER
 5/28/97, BVD
 SET P.K./WASHER
 10-21-97, SAH
 FD MONBOX
 W/ 3/4" IPIN
 REF10
 8-8-17, JLL

NOTE:
 REF: LUC-24-0.00
 PID: 25490, 83984



O.D.O.T. DISTRICT 2 SURVEY OFFICE

PERSONNEL

REFERENCE NO. 13

SHEET 17 OF 68

NOTES S. HUSS

H.C. B. VAN DUSEN

R.C. S. HUSS

DATE 5-28-97

WEATHER PARTLY CLOUDY / WINDY

TEMP. 76.1°F

ROUTE US-24

COUNTY Lucas

TOWNSHIP Providence

SECTION 5

T 5 N R 9 E

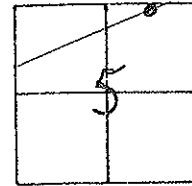
TYPE MONUMENT PK & WASHER

ON SURFACE - BELOW ON SURFACE

LEFT - C PAV'T. - RIGHT 14.2'

2.3' TO LT EDGE PAVEMENT

S.L.M. 127+44



SET PK/WASHER
10-21-97
SAH

