

O.D.O.T. DISTRICT 2 SURVEY OFFICE (USE ONLY)

PERSONNEL

REFERENCE NO. N

SHEET 13 OF 20

NOTES HUSS
 H.C. VAN DUSEN
 R.C. MOSER

DATE 5/28/97
 WEATHER CLOUDY/WINDY
 TEMP. 61°

ROUTE SR 295
 COUNTY LUCAS
 TOWNSHIP PROVIDENCE
 SECTION 33
T 6 N R 9 E

DWG BY MILLER PID 83894

TYPE MONUMENT P.K./WASHER

ON SURFACE - ~~BELOW~~ ON

OFFSET \odot PAVEMENT 0.4' ~~LT~~ : RT

11.4' TO RT EDGE PAVEMENT

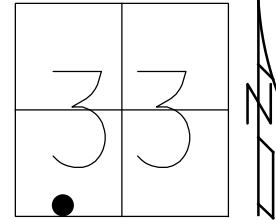
STATION: 87+26

HORZ.DATUM: NAD83(2011)

GEOID: 12A NAVD88

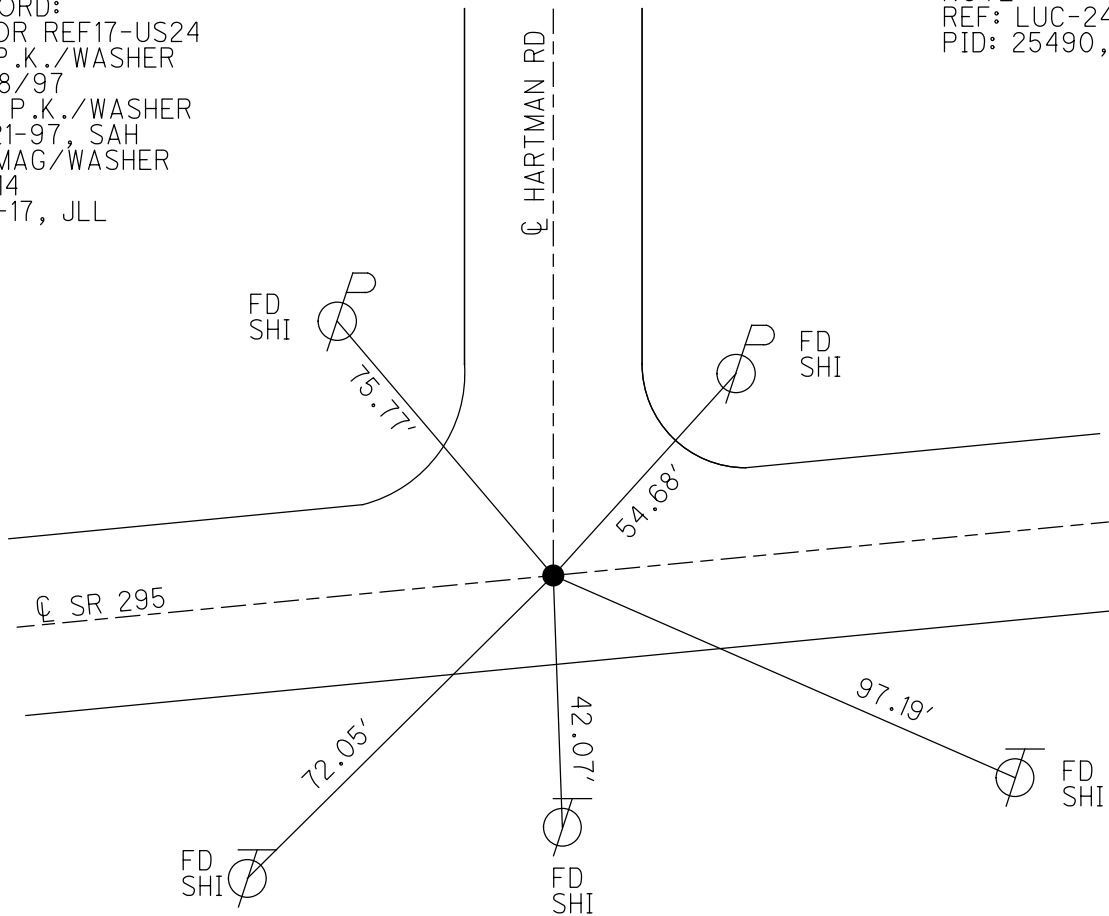
GRID: NORTHING: 645402.299

EASTING: 1601182.002



RECORD:
 PRIOR REF17-US24
 FD P.K./WASHER
 5/28/97
 SET P.K./WASHER
 10-21-97, SAH
 FD MAG/WASHER
 REF14
 8-8-17, JLL

NOTE:
 REF: LUC-24-0.00
 PID: 25490, 83984



O.D.O.T. DISTRICT 2 SURVEY OFFICE

PERSONNEL

REFERENCE NO. 17

SHEET 21 OF 68

NOTES S. HUSS

H.C. B. VAN DUSEN

DATE 5-28-97

ROUTE US-24

R.C. K. MOSER

WEATHER Partly Cloudy / Windy

COUNTY Lucas

TEMP. +61°F

TOWNSHIP Providence

SECTION 33

T 6 N R 9 E

TYPE MONUMENT PK & WASHER

ON SURFACE - ~~BELOW~~ CW SURFACE

LEFT - 0 PAV'T. - RIGHT 6.4 FT

11.4 TO RT EDGE PAVEMENT

S.L.M. 147+27

