

O.D.O.T. DISTRICT 2 SURVEY OFFICE (USE ONLY)

PERSONNEL

REFERENCE NO. R

SHEET 17 OF 20

NOTES HUSS

DATE 6/5/97

ROUTE SR 295

H.C. VAN DUSEN

WEATHER CLOUDY/RAIN

COUNTY LUCAS

R.C. CORDES
 COX

TEMP. 58°

TOWNSHIP PROVIDENCE

DWG BY MILLER

PID 83894

SECTION 33

T 6 N R 9 E

TYPE MONUMENT P.K. NAIL

ON SURFACE - ~~BELOW~~ ON

OFFSET C PAVEMENT 9.4' ~~LT~~ : RT

 2.4' TO RT EDGE PAVEMENT

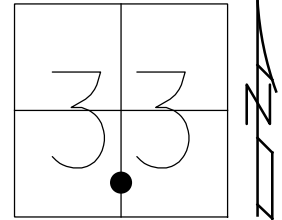
STATION: 128+33

HORIZ.DATUM: NAD83(2011)

GEOID: 12A NAVD88

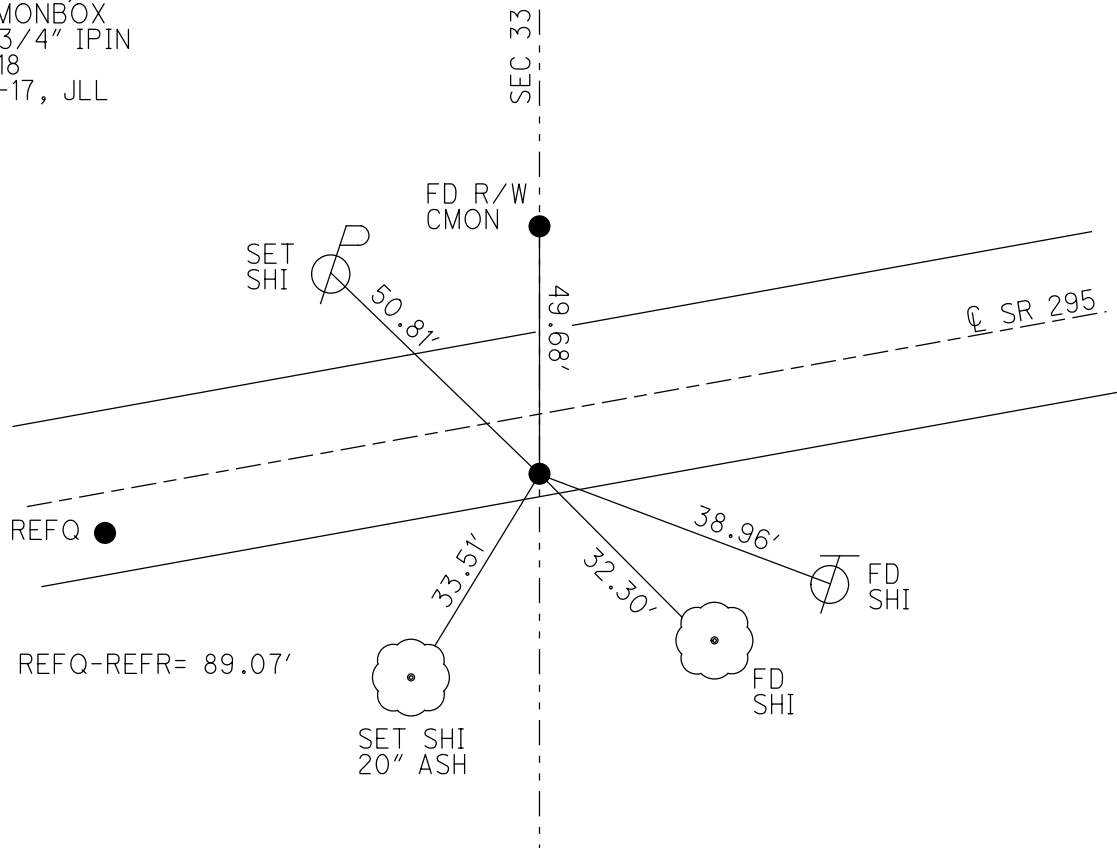
GRID: NORTHING: 646944.052

EASTING: 1604986.577



RECORD:
PRIOR REF 19A-US24
FD P.K.NAIL
6/5/97, BVD
SET P.K./WASHER
10-21-97, SAH
FD MONBOX
W/ 3/4" IPIN
REF18
8-8-17, JLL

NOTE:
REF: LUC-24-0.00
PID: 25490, 83984



O.D.O.T. DISTRICT 2 SURVEY OFFICE

PERSONNEL

REFERENCE NO. 19-A SHEET 25 OF 68

NOTES S. AUSS

H.C. B. VAN DUSEN

R.C. B. CORDES

A C. COV

DATE 6-5-97

WEATHER CLOUDY / RAIN

TEMP. +58°F

ROUTE US-24

COUNTY LUCAS

TOWNSHIP PROVIDENCE

SECTION 33

T. 6 N. R. 9 E

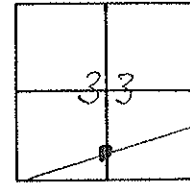
TYPE MONUMENT PK/WAIL

ON SURFACE - BELOW ON SURFACE

LEFT - 0 PAV'T. - RIGHT 9.4' RT

2.4 TO RT EDGE PAVEMENT

S.L.M. 161 + 27



SET PK/WASHER
10-21-97
SAA

