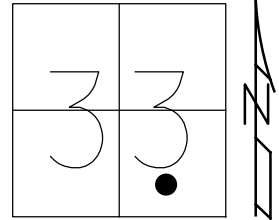


O.D.O.T. DISTRICT 2 SURVEY OFFICE (USE ONLY)

PERSONNEL \_\_\_\_\_ REFERENCE NO. S SHEET 18 OF 20  
 NOTES HUSS DATE 6/2/97 ROUTE SR 295  
 H.C. VAN DUSEN WEATHER CLOUDY/RAIN COUNTY LUCAS  
 R.C. CORDES TEMP. 58° TOWNSHIP PROVIDENCE  
           COX SECTION 33  
 DWG BY MILLER PID 83894 T 6 N R 9 E

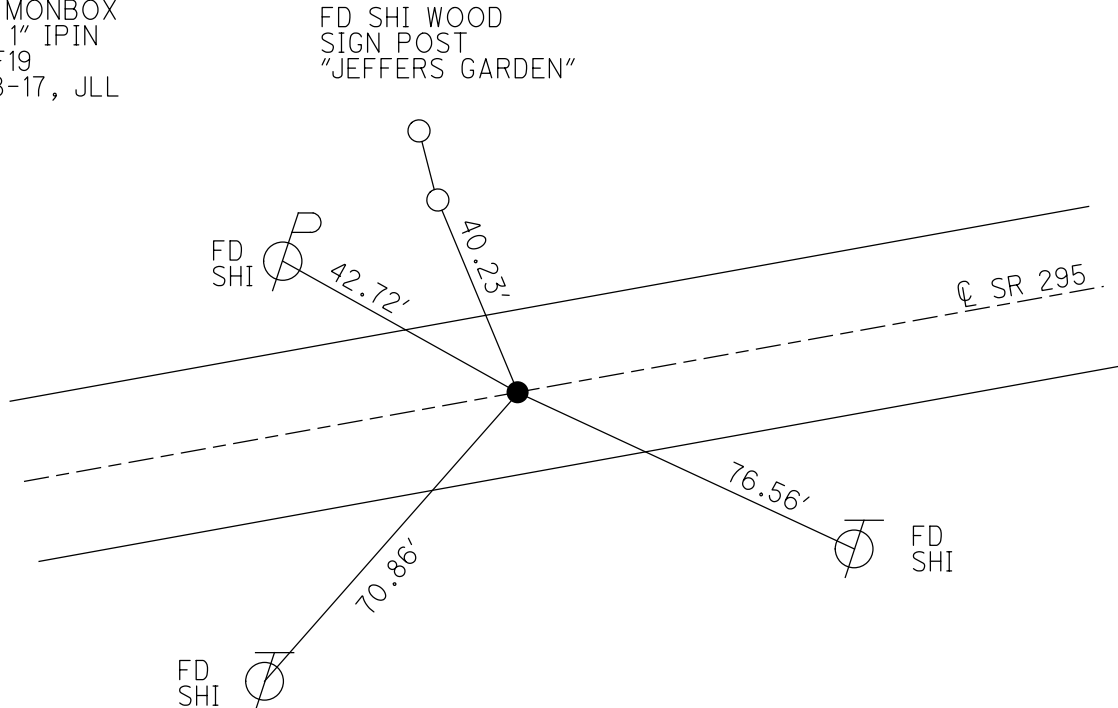
TYPE MONUMENT P.K./WASHER  
 ON SURFACE - ~~BELOW~~ ON  
 OFFSET 0 PAVEMENT ON ~~LT~~ : ~~RT~~  
12.2' TO LT EDGE PAVEMENT  
 STATION: 129+15



HORIZ.DATUM: NAD83(2011) GEOID: 12A NAVD88  
 GRID: NORTHING: 646976.148 EASTING: 1605062.031

RECORD:  
 PRIOR REF20-US24  
 FD P.K./WASHER  
 6/2/97, BVD  
 FD SM R.R. SPIKE  
 SET P.K./WASHER  
 10-21-97, SAH  
 FD MONBOX  
 W/ 1" IPIN  
 REF19  
 8-8-17, JLL

NOTE:  
 REF: LUC-24-0.00  
 PID: 25490, 83984



# O.D.O.T. DISTRICT 2 SURVEY OFFICE

PERSONNEL

REFERENCE NO. 20

SHEET 26 OF 68

NOTES S. AUSS

H.C. B. VAN DUSEN

DATE 6-2-97

ROUTE US-24

R.C. B. COOPER

WEATHER CLOUDY / RAIN

COUNTY Lucas

F C. COX

TEMP. +58.0 F

TOWNSHIP Providence

SECTION 33

T 6 N R 9 E

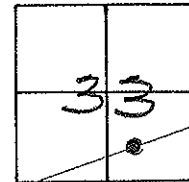
TYPE MONUMENT PK/WASHER

ON SURFACE - ~~BELOW~~ ON SURFACE

~~LEFT - & PAV'T. - RIGHT~~ ON &

12.2' TO LT EDGE PAVEMENT

S.L.M. 180+67



Record

Fd Sm, RR Spk

10-21-97

SET PK/WASHER

10-21-97

SAH

