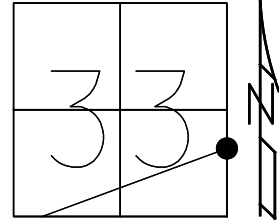


O.D.O.T. DISTRICT 2 SURVEY OFFICE (USE ONLY)

PERSONNEL \_\_\_\_\_ REFERENCE NO. 1 SHEET 1 OF 45  
 NOTES AUBLE DATE 5/3/23 ROUTE SR 295  
 H.C. NIESE WEATHER WINDY COUNTY LUCAS  
 R.C. MILLER TEMP. 53° TOWNSHIP PROVIDENCE  
 DWG BY ASTON PID CHIP SEAL SECTION 33  
 T 6 N R 9 E

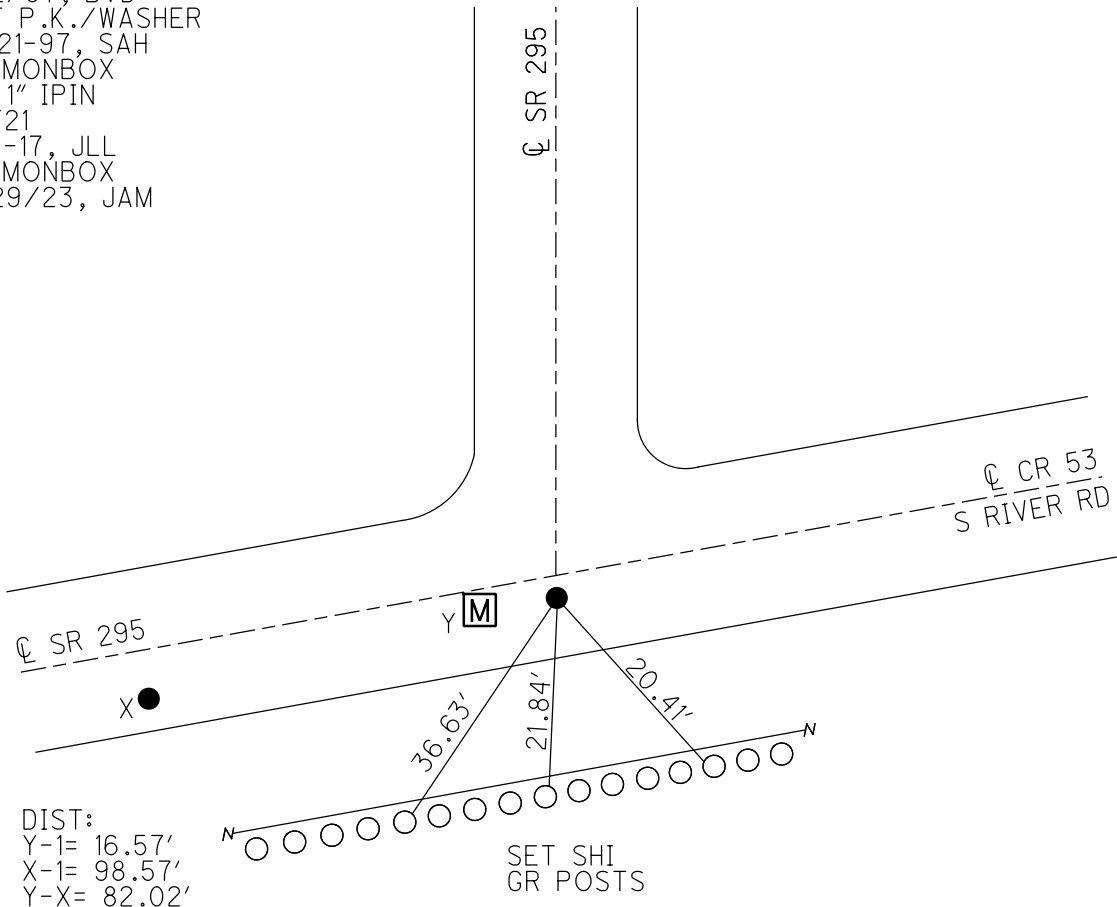
TYPE MONUMENT MONBOX W/ 1" IPIN  
 ON SURFACE - ~~BELOW~~ ON  
 OFFSET  $\odot$  PAVEMENT 2.1 ~~LT~~ : RT  
9.7 TO RT EDGE PAVEMENT  
 STATION: 130+23.4



HORZ.DATUM: NAD83(2011) GEOID: NAVD88 2018  
 GRID: NORTHING: 647022.264 EASTING: 1605149.049

RECORD:  
 PRIOR REF22-US24  
 FD P.K./WASHER  
 6/2/97, BVD  
 SET P.K./WASHER  
 10-21-97, SAH  
 FD MONBOX  
 W/ 1" IPIN  
 REF21  
 8-8-17, JLL  
 FD MONBOX  
 9/29/23, JAM

LUCAS: LDP  
 N: 268016.212  
 E: 116002.928



DIST:  
 Y-1= 16.57'  
 X-1= 98.57'  
 Y-X= 82.02'

SET SHI  
 GR POSTS

O.D.O.T. DISTRICT 2 SURVEY OFFICE (USE ONLY)

PERSONNEL

REFERENCE NO. 1

SHEET 20 OF 20

NOTES HUSS

DATE 6/2/97

ROUTE SR 295

H.C. VAN DUSEN

WEATHER CLOUDY/RAIN

COUNTY LUCAS

R.C. CORDES

TEMP. 57°

TOWNSHIP PROVIDENCE

COX

DWG BY MILLER PID 83894

SECTION 33

T 6 N R 9 E

TYPE MONUMENT P.K./WASHER

ON SURFACE - ~~BELOW~~ ON

OFFSET ☑ PAVEMENT 2.1 ~~±~~ : RT

9.7 TO RT EDGE PAVEMENT

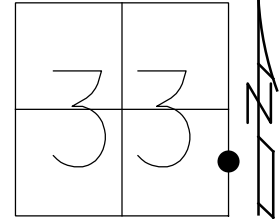
STATION: 130+10

HORZ.DATUM: NAD83(2011)

GEOID: 12A NAVD88

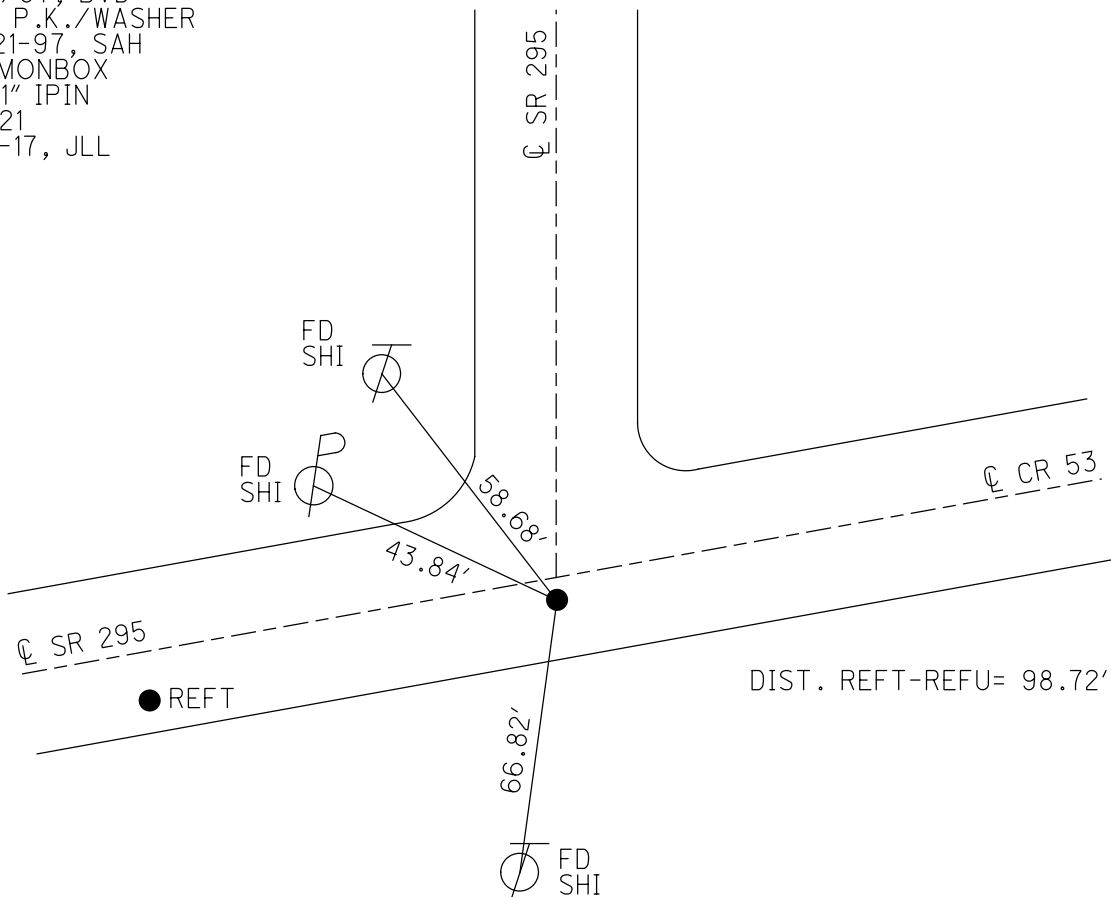
GRID: NORTHING: 647022.264

EASTING: 1605149.049



RECORD:  
 PRIOR REF22-US24  
 FD P.K./WASHER  
 6/2/97, BVD  
 SET P.K./WASHER  
 10-21-97, SAH  
 FD MONBOX  
 W/ 1" IPIN  
 REF21  
 8-8-17, JLL

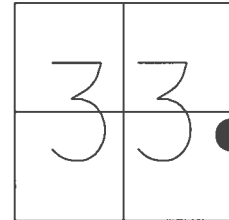
NOTE:  
 REF: LUC-24-0.00  
 PID: 25490, 83984



O.D.O.T. DISTRICT 2 SURVEY OFFICE (USE ONLY)

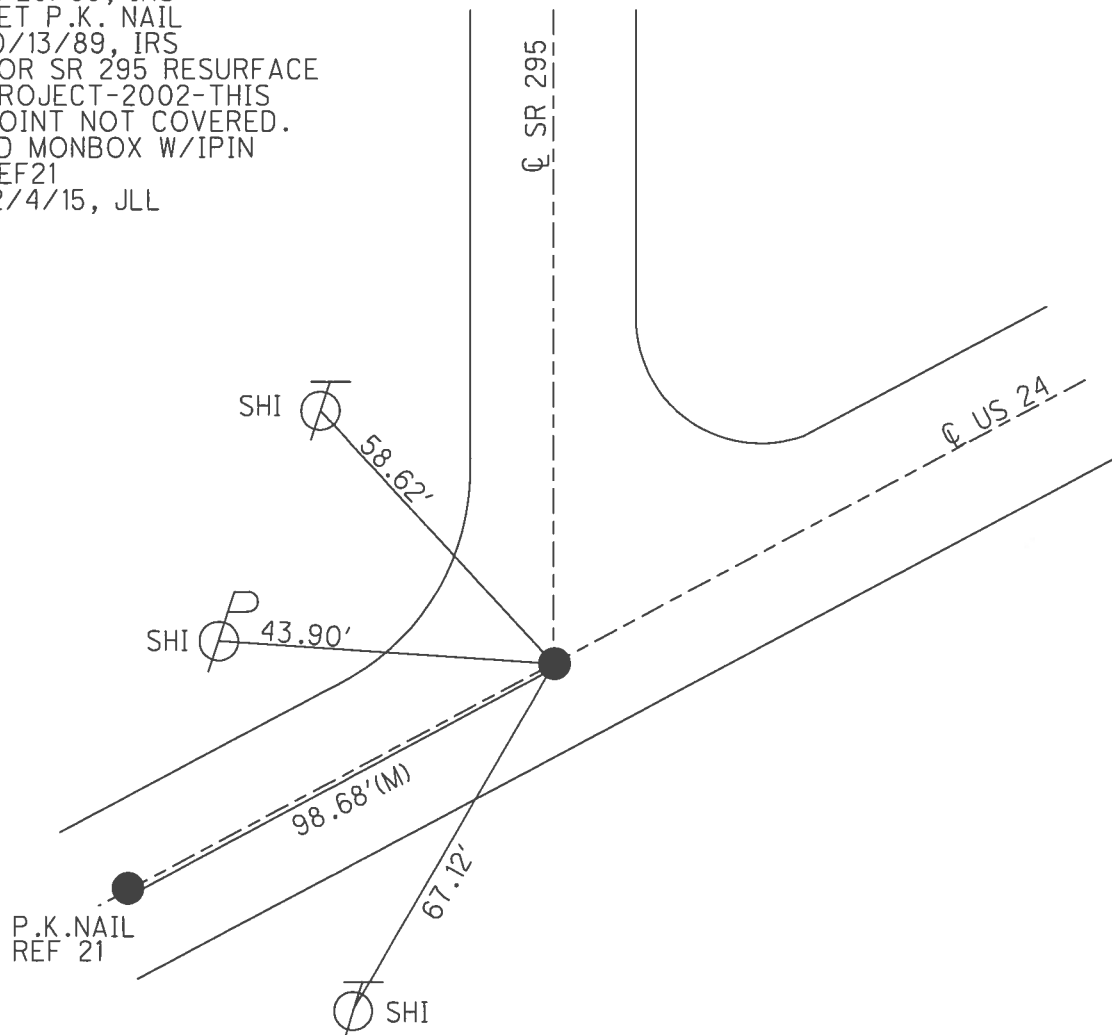
PERSONNEL \_\_\_\_\_ REFERENCE NO. 1 SHEET 1 OF 45  
 NOTES STONE DATE 8/29/89 ROUTE SR 295  
 H.C. CURTIS WEATHER HUMID COUNTY LUCAS  
 R.C. HOUSEHOLDER TEMP. 84° TOWNSHIP PROVIDENCE  
 \_\_\_\_\_ SECTION 33  
 \_\_\_\_\_ T 6 N R 9 E

TYPE MONUMENT P.K. NAIL  
 ON SURFACE - ~~BELOW~~ ON  
 LEFT - ☉ PAV'T - RIGHT \_\_\_\_\_  
\_\_\_\_\_ TO \_\_\_\_\_ EDGE PAVEMENT  
 S.L.M. 130+41.6



GRID: NORTHING: 647022.264 EASTING: 1605149.049

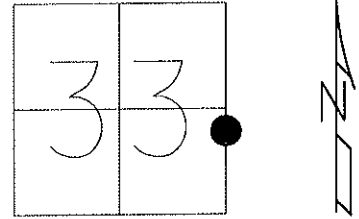
RECORD:  
 FD P.K.NAIL  
 8/29/89, IRS  
 SET P.K. NAIL  
 10/13/89, IRS  
 FOR SR 295 RESURFACE  
 PROJECT-2002-THIS  
 POINT NOT COVERED.  
 FD MONBOX W/IPIN  
 REF21  
 12/4/15, JLL



# O.D.O.T. DISTRICT 2 SURVEY OFFICE

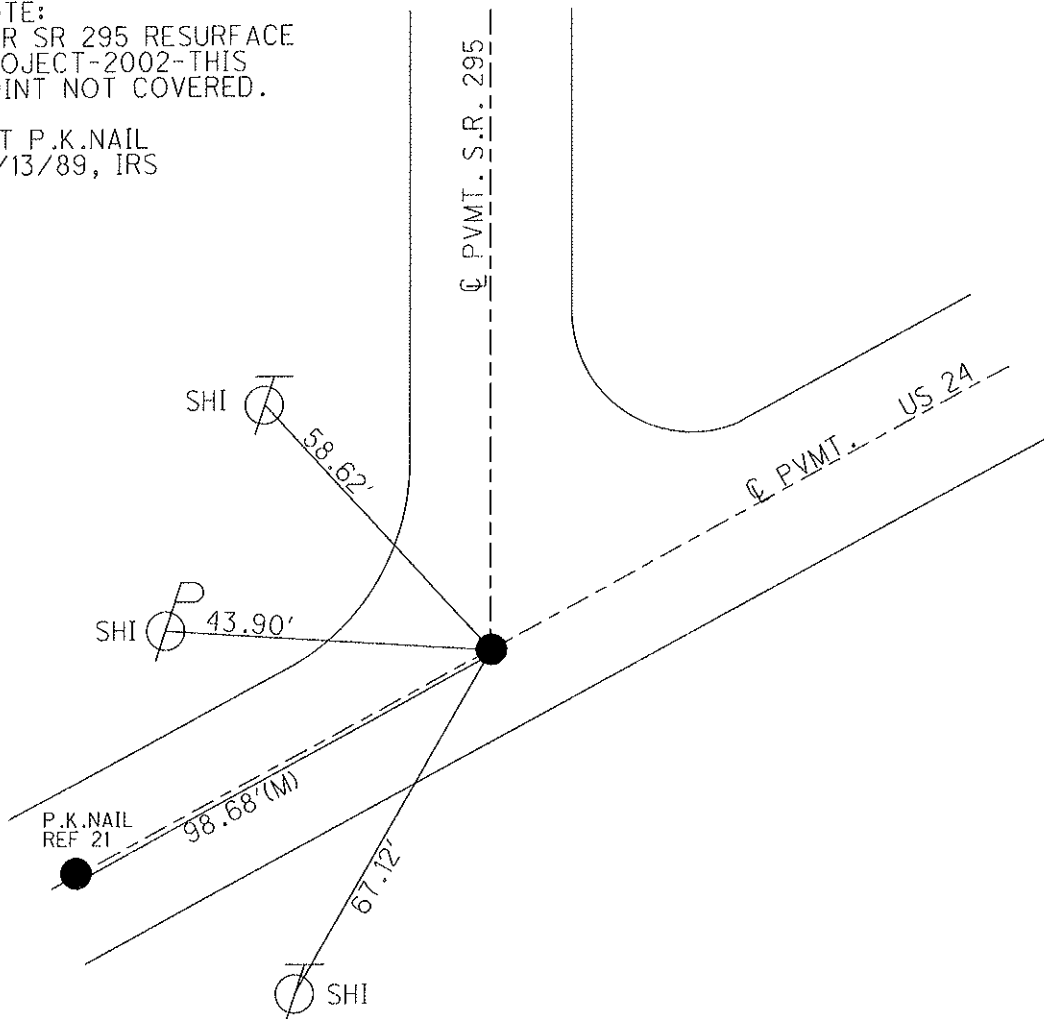
PERSONNEL	REFERENCE NO. <u>1</u>	SHEET <u>1</u> OF <u>45</u>
NOTES <u>I.STONE</u>	DATE <u>8/29/89</u>	ROUTE <u>SR 295</u>
H.C. <u>D.CURTIS</u>	WEATHER <u>HUMID</u>	COUNTY <u>LUCAS</u>
R.C. <u>J.HOUSEHOLDER</u>	TEMP. <u>84°</u>	TOWNSHIP <u>PROVIDENCE</u>
		SECTION <u>33</u>
		<u>T 6 N R 9 E</u>

TYPE MONUMENT P.K. NAIL  
 ON SURFACE - ~~BELOW~~ ON  
 LEFT - ☉ PAV'T - RIGHT \_\_\_\_\_  
 \_\_\_\_\_ TO \_\_\_\_\_ EDGE PAVEMENT  
 S.L.M. 189+73



NOTE:  
 FOR SR 295 RESURFACE  
 PROJECT-2002-THIS  
 POINT NOT COVERED.

SET P.K.NAIL  
 10/13/89, IRS



# Resurveyed 2002 mill-Pill

PERSONNEL	TITLE	PERSONNEL	TITLE
W. DENNO			
D. CURTIS			
D. STEVENS			
R. BRANNAN			

COUNTY LUCAS DATE JULY 12, 1971  
 S. R. # 295 WEATHER CLOUDY  
 SEC. \_\_\_\_\_ TEMP. 70±

DESCRIPTION \_\_\_\_\_ REFERENCES TO CONTROL POINTS \_\_\_\_\_ JOB NO. \_\_\_\_\_  
 LEFT CENTER LINE RIGHT

