

O.D.O.T. DISTRICT 2 SURVEY OFFICE (USE ONLY)

PERSONNEL

REFERENCE NO. 2

SHEET 2 OF 45

NOTES AUBLE

DATE 5/3/23

ROUTE SR 295

H.C. NIESE

WEATHER WINDY

COUNTY LUCAS

R.C. MILLER

TEMP. 48°

TOWNSHIP PROVIDENCE

SECTION 33

DWG BY ASTON

PID CHIP SEAL

T 6 N R 9 E

TYPE MONUMENT MAG/ WASHER

ON SURFACE - ~~BELOW~~ ON

OFFSET Q PAVEMENT 4.8' LT : ~~RT~~

6.5' TO LT EDGE PAVEMENT

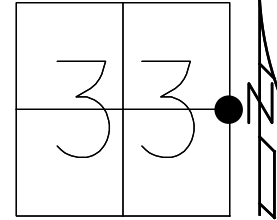
STATION: 138+70

HORZ.DATUM: NAD83(2011)

GEOID: NAVD88 2018

GRID: NORTHING: 647851.287

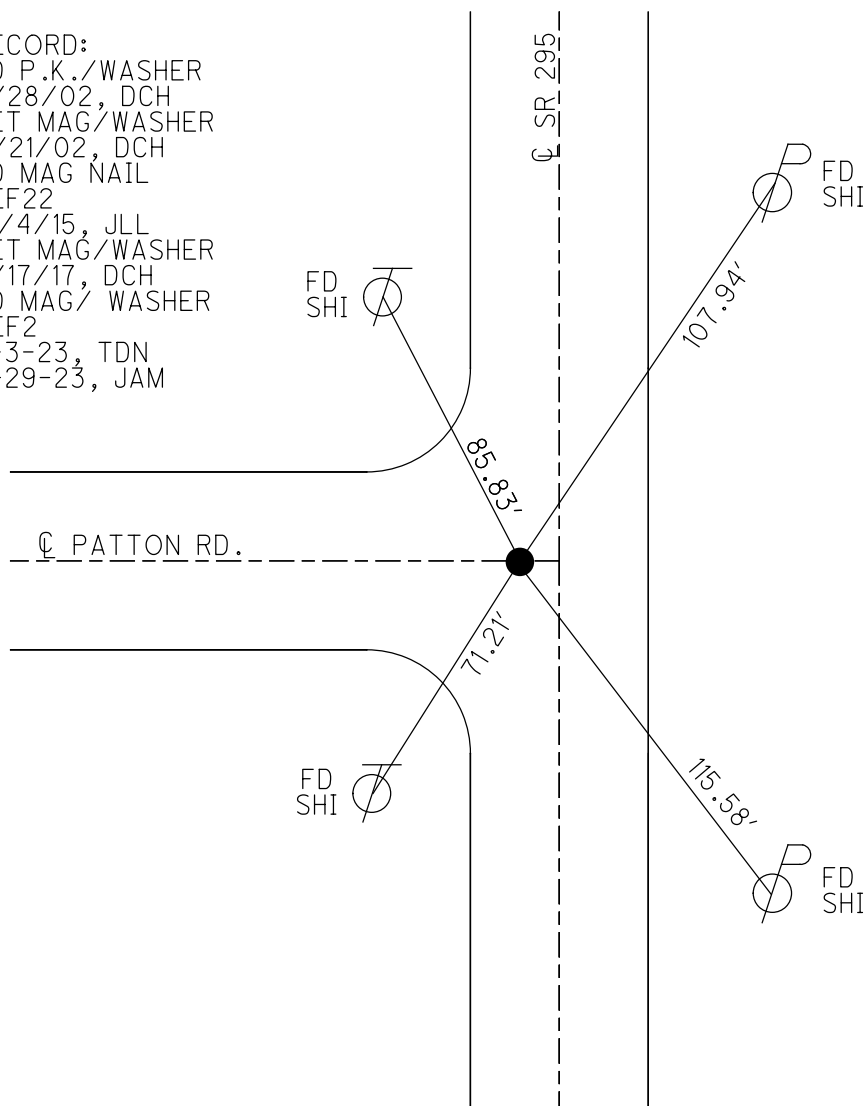
EASTING: 1605144.350



RECORD:

FD P.K./WASHER  
8/28/02, DCH  
SET MAG/WASHER  
11/21/02, DCH  
FD MAG NAIL  
REF22  
12/4/15, JLL  
SET MAG/WASHER  
7/17/17, DCH  
FD MAG/ WASHER  
REF2  
5-3-23, TDN  
9-29-23, JAM

LUCAS: LDP  
N: 268845.143  
E: 115987.334



O.D.O.T. DISTRICT 2 SURVEY OFFICE (USE ONLY)

PERSONNEL \_\_\_\_\_ REFERENCE NO. 2 SHEET 2 OF 45

NOTES HOMAN DATE 3/17/17 ROUTE SR 295

H.C. HOMAN WEATHER CLOUDY COUNTY LUCAS

R.C. HELDMAN TEMP. 30° TOWNSHIP PROVIDENCE

SECTION 33

T 6 N R 9 E

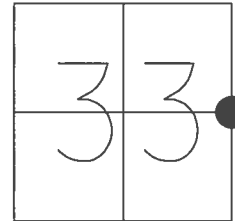
TYPE MONUMENT MAG NAIL

ON SURFACE - ~~BELOW~~ ON

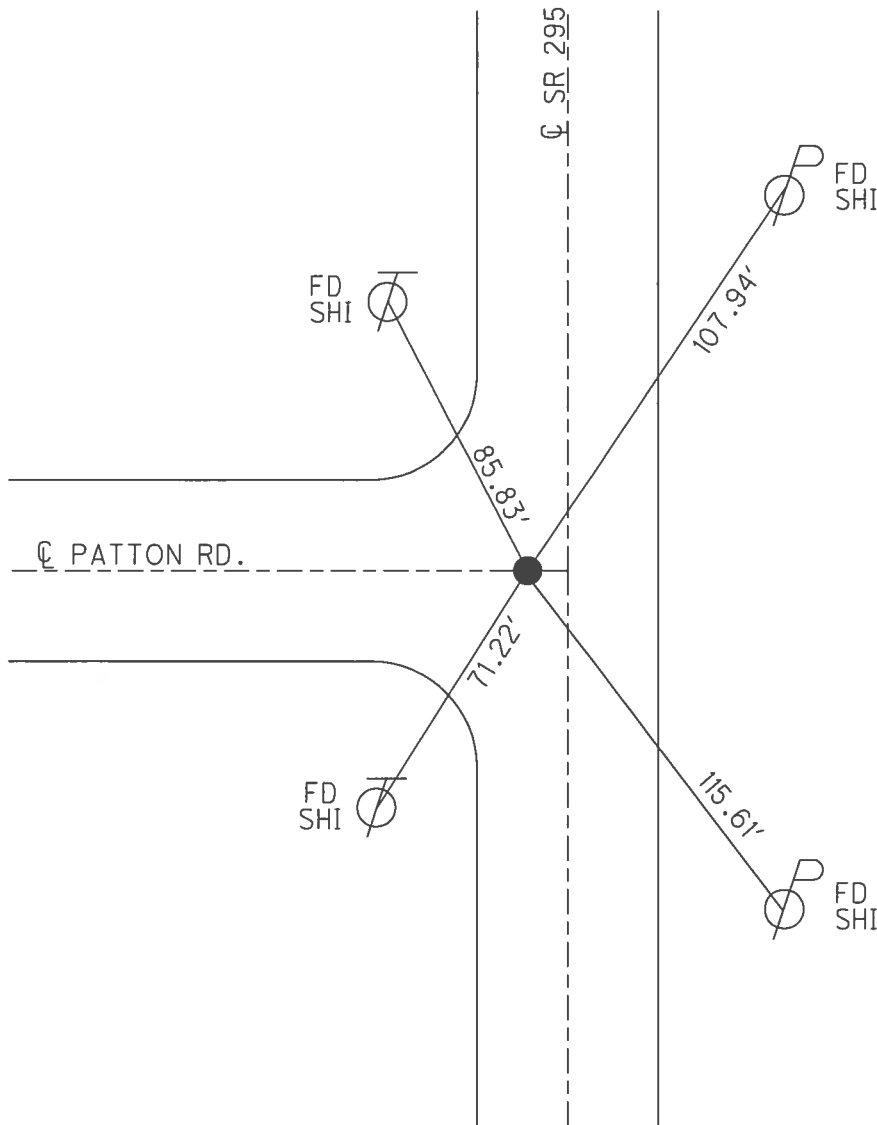
LEFT - ☉ PAV'T - ~~RIGHT~~ 4.5'

6.5' TO LT EDGE PAVEMENT

S.L.M. 138+70



GRID: NORTHING: 647851.287 EASTING: 1605144.350



RECORD:  
 FD P.K./WASHER  
 8/28/02, DCH  
 SET MAG/WASHER  
 11/21/02, DCH  
 FD MAG NAIL  
 REF22  
 12/4/15, JLL  
 SET MAG/WASHER  
 7/17/17, DCH

# O.D.O.T. DISTRICT 2 SURVEY OFFICE

PERSONNEL

REFERENCE NO. 2

SHEET 2 OF 45

NOTES BEAUMONT

DATE 8-29-02

ROUTE S.R. 295

H.C. HOMAN

WEATHER SUNNY

COUNTY LUCAS

R.C. BEAUMONT

TEMP. 75°

TOWNSHIP PROVIDENCE

SECTION 33

T 6 N R 9 E

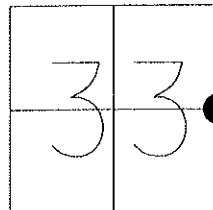
TYPE MONUMENT P.K. NAIL

ON SURFACE - ~~BELOW~~ ON SURFACE

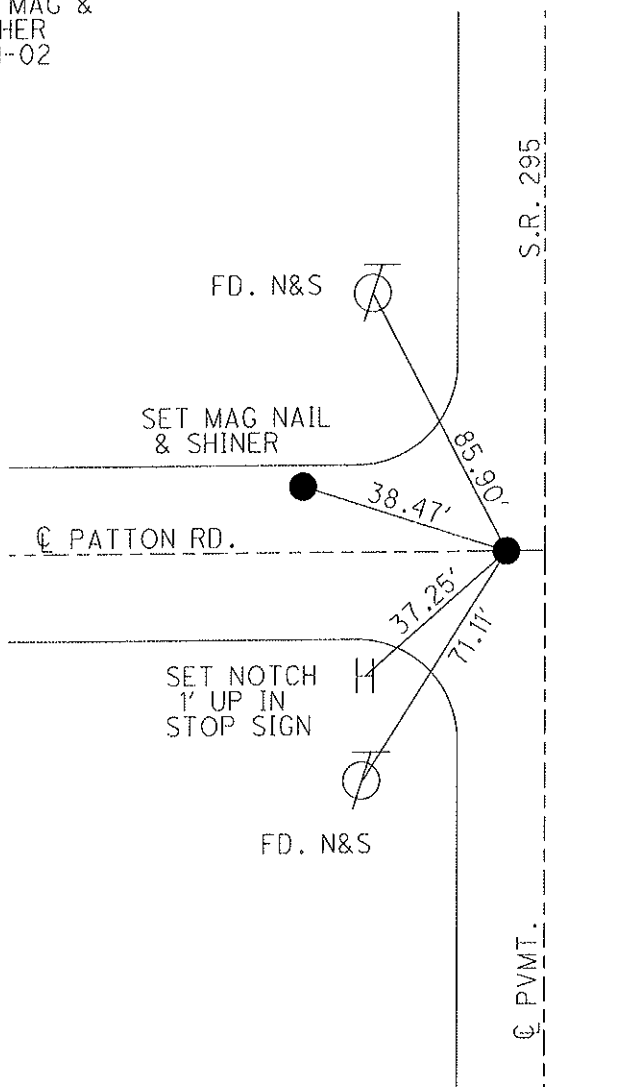
LEFT - Q PAV'T - ~~RIGHT~~ 4.5' LEFT

6.5' TO LT. EDGE PAVEMENT

S.L.M. 8+28



SET MAG &  
WASHER  
11-21-02  
DCH



# O.D.O.T. DISTRICT 2 SURVEY OFFICE

PERSONNEL \_\_\_\_\_

REFERENCE NO. 2

SHEET 1 OF 35

NOTES LOEHARKE

H.C. CURTIS

R.C. LOEHARKE

DATE 8-15-91

WEATHER CLEAR

TEMP. +72

ROUTE S.R. 295

COUNTY LUCAS

TOWNSHIP PROVIDENCE

SECTION 33

T6 N R 9 E

Set P.K./WASHER  
3-24-92

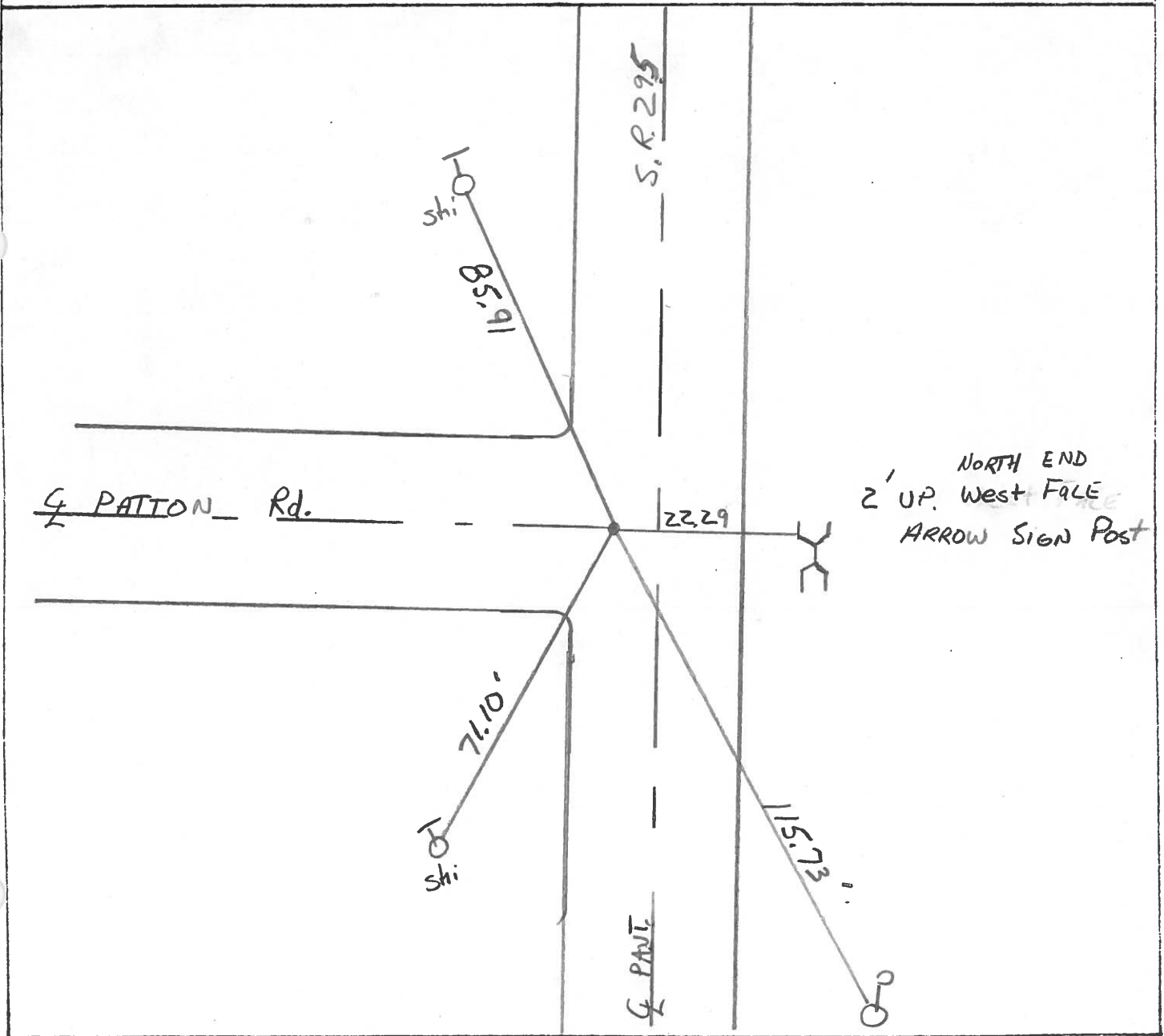
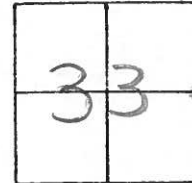
TYPE MONUMENT P.K.

ON SURFACE - BELOW YES

LEFT-☉ PAV'T. - RIGHT 5.5

14' TO RT EDGE PAVEMENT

S.L.M. 8+28



Q.D.O.T. DISTRICT 2 SURVEY OFFICE

SHEET 1 OF

County Lucas S.R. 295

Date 3 April 84

Township Providence

Weather Cloudy

Section 33

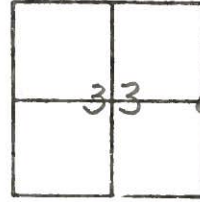
Temp. 45°

T N, R E

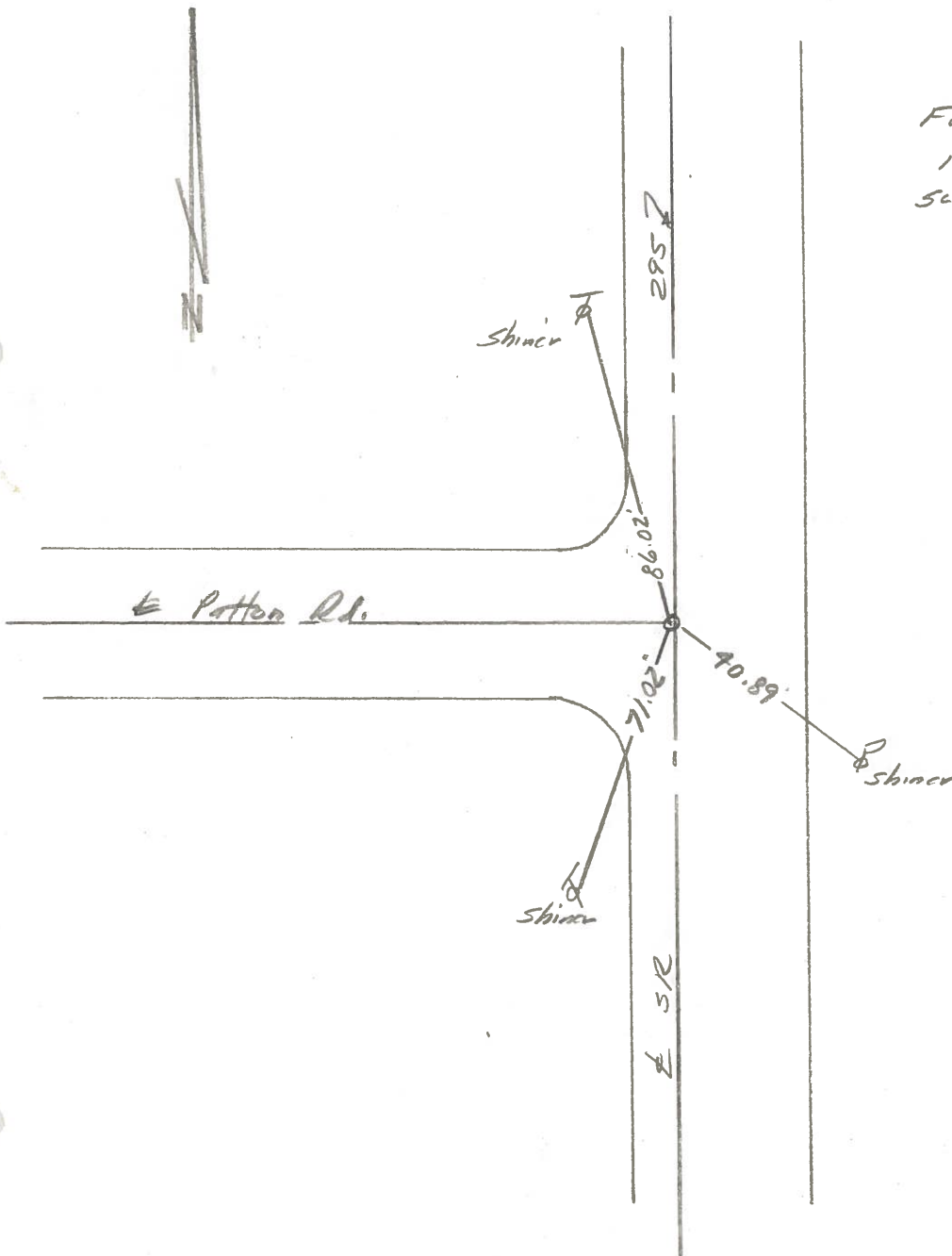
Personnel I. Stone

P. Neuser

D. Curtis



Ref. No. 2

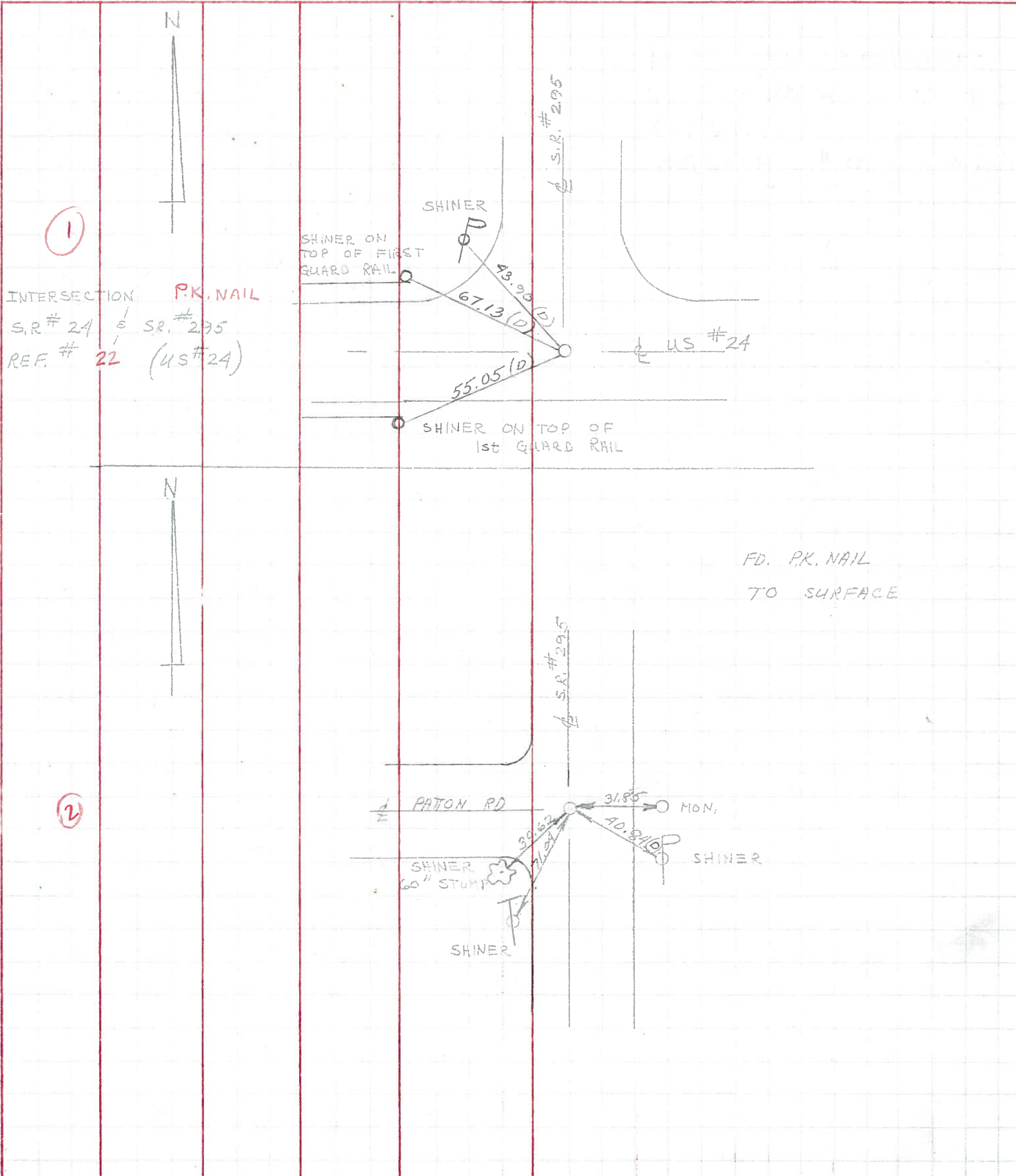


Fd. '12" I. Rod to surface  
 13.9' to E. edge put.  
 set PK Nail 11/02/84

Resurveyed 2002  
mill-Fill

PERSONNEL	TITLE	PERSONNEL	TITLE	COUNTY	DATE	WEATHER	TEMP.
W. DENNO				LUCAS	JULY 12, 1971	CLOUDY	70±
D. CURTIS				S. R. #295			
D. STEVENS							
R. BRANNAN				SEC.			

DESCRIPTION REFERENCES TO CONTROL POINTS JOB NO.



FD. P.K. NAIL  
TO SURFACE

PERSONNEL	TITLE	PERSONNEL	TITLE	COUNTY	DATE
Stone	Notes			Lucas	6 June 68
Beck	Tap			S. R. # 295	WEATHER Hot
Michalale	Tap			SEC.	TEMP. 86°

DESCRIPTION References to Control Points JOB NO. \_\_\_\_\_  
 LEFT CENTER LINE RIGHT

