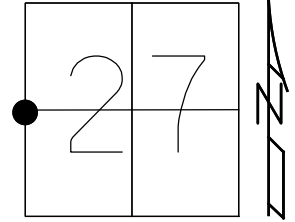


O.D.O.T. DISTRICT 2 SURVEY OFFICE (USE ONLY)

PERSONNEL _____ REFERENCE NO. 4 SHEET 4 OF 45
 NOTES AUBLE DATE 5-3-23 ROUTE SR 295
 H.C. NIESE WEATHER WINDY COUNTY LUCAS
 R.C. MILLER TEMP. 53° TOWNSHIP PROVIDENCE
 DWG BY ASTON PID CHIP SEAL SECTION 27
 T 6 N R 9 E

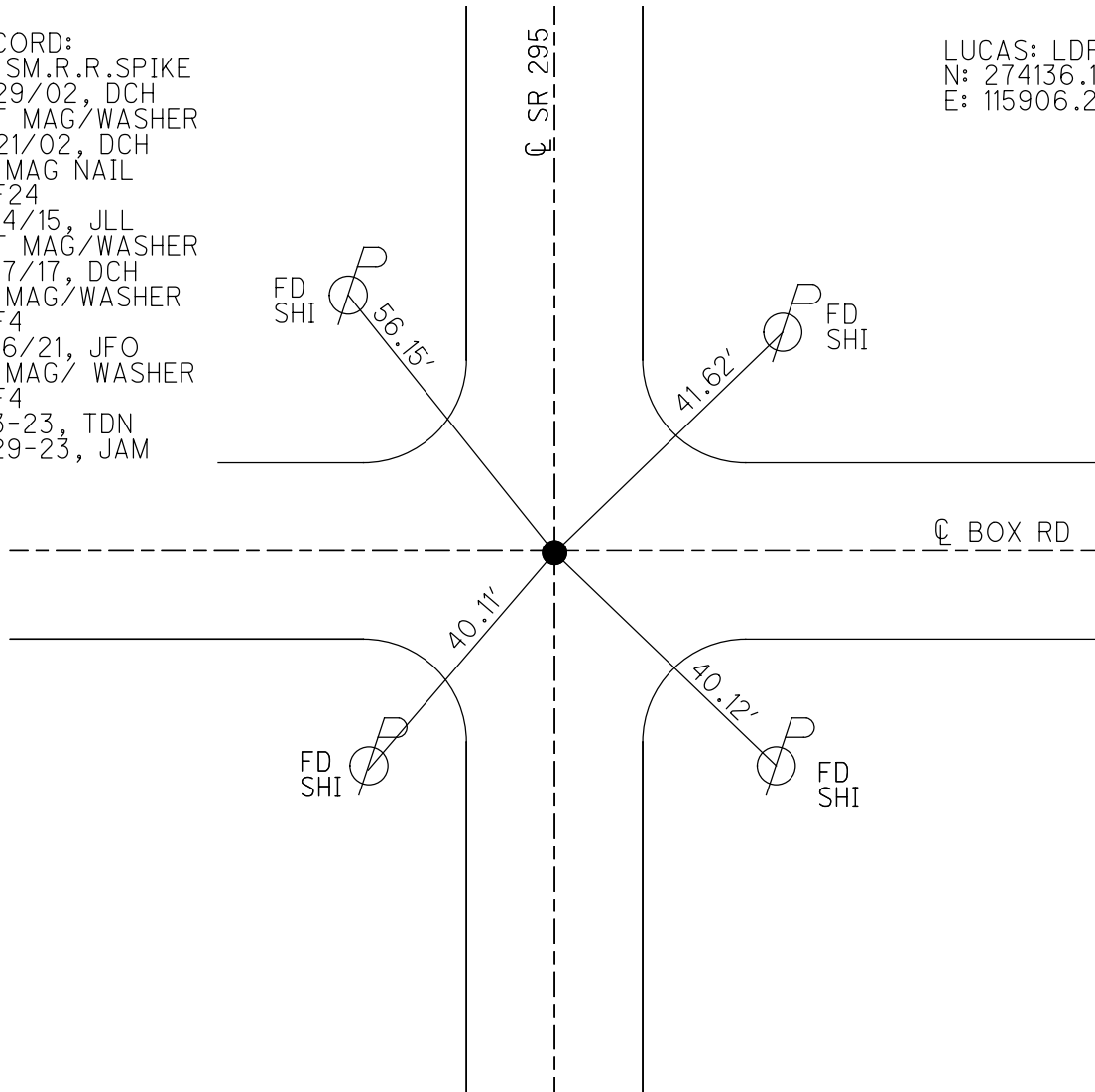
TYPE MONUMENT MAG NAIL
 ON SURFACE - ~~BELOW~~ ON
 OFFSET \varnothing PAVEMENT ON LT : RT
11' TO LT EDGE PAVEMENT
 STATION: 191+61.88



HORIZ.DATUM: NAD83(2011) GEOID: NAVD88 2018
 GRID: NORTHING: 653142.529 EASTING: 1605132.872

RECORD:
 FD SM.R.R.SPIKE
 8/29/02, DCH
 SET MAG/WASHER
 11/21/02, DCH
 FD MAG NAIL
 REF24
 12/4/15, JLL
 SET MAG/WASHER
 7/17/17, DCH
 FD MAG/WASHER
 REF4
 12/6/21, JFO
 FD MAG/ WASHER
 REF4
 5-3-23, TDN
 9-29-23, JAM

LUCAS: LDP
 N: 274136.136
 E: 115906.204



O.D.O.T. DISTRICT 2 SURVEY OFFICE (USE ONLY)

PERSONNEL _____ REFERENCE NO. 4 SHEET 4 OF 45

NOTES HOMAN DATE 3/17/17 ROUTE SR 295
 H.C. HOMAN WEATHER CLOUDY COUNTY LUCAS
 R.C. HELDMAN TEMP. 30° TOWNSHIP PRIVIDENCE
 _____ SECTION 27
 _____ T 6 N R 9 E

TYPE MONUMENT MAG NAIL

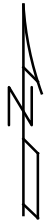
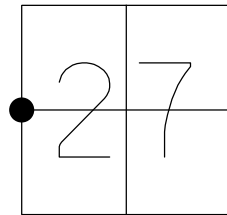
~~ON SURFACE~~ - BELOW ON

LEFT - ☉ PAV'T - ~~RIGHT~~ 0.5'

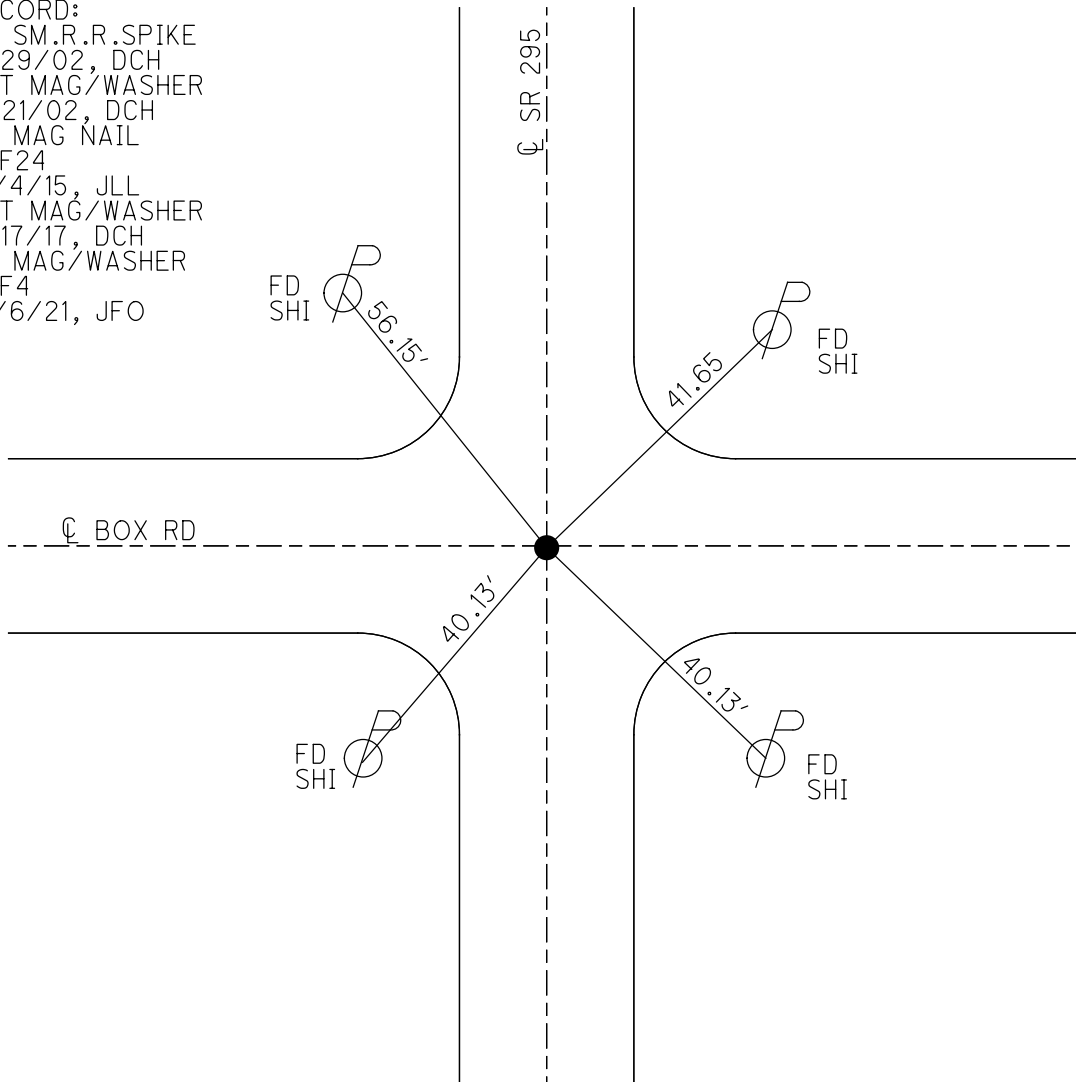
11' TO LT EDGE PAVEMENT

S.L.M. 191+61.88

GRID: NORTHING: 653142.529 EASTING: 1605132.872



RECORD:
 FD SM.R.R.SPIKE
 8/29/02, DCH
 SET MAG/WASHER
 11/21/02, DCH
 FD MAG NAIL
 REF24
 12/4/15, JLL
 SET MAG/WASHER
 7/17/17, DCH
 FD MAG/WASHER
 REF4
 12/6/21, JFO



O.D.O.T. DISTRICT 2 SURVEY OFFICE (USE ONLY)

PERSONNEL _____ REFERENCE NO. 4 SHEET 4 OF 45

NOTES HOMAN DATE 3/17/17 ROUTE SR 295
 H.C. HOMAN WEATHER CLOUDY COUNTY LUCAS
 R.C. HELDMAN TEMP. 30° TOWNSHIP PRIVIDENCE
 _____ SECTION 27
 _____ T 6 N R 9 E

TYPE MONUMENT MAG NAIL

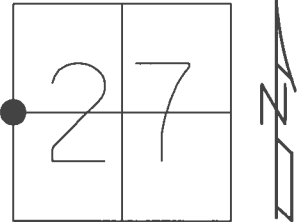
~~ON SURFACE~~ - BELOW ON

LEFT - ☉ PAV'T - ~~RIGHT~~ 0.5'

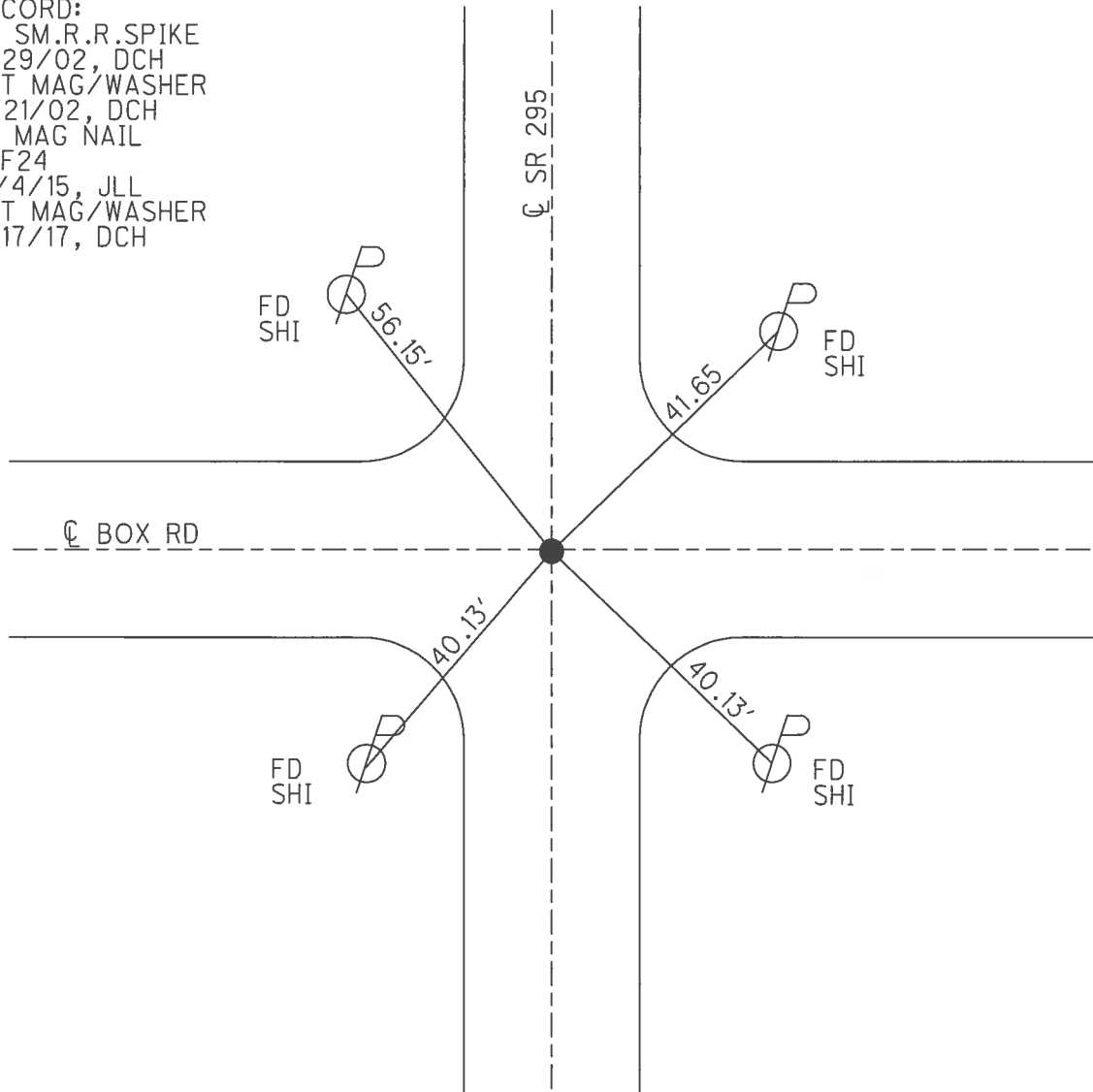
11' TO LT EDGE PAVEMENT

S.L.M. 191+61.88

GRID: NORTHING: 653142.511 EASTING: 1605132.871



RECORD:
 FD SM.R.R.SPIKE
 8/29/02, DCH
 SET MAG/WASHER
 11/21/02, DCH
 FD MAG NAIL
 REF24
 12/4/15, JLL
 SET MAG/WASHER
 7/17/17, DCH



O.D.O.T. DISTRICT 2 SURVEY OFFICE

PERSONNEL

REFERENCE NO. 4

SHEET 4 OF 45

NOTES BEAUMONT

DATE 8-29-02

ROUTE S.R. 295

H.C. HOMAN

WEATHER SUNNY

COUNTY LUCAS

R.C. BEAUMONT

TEMP. 75°

TOWNSHIP PROVIDENCE

SECTION 27

T 6 N R 9 E

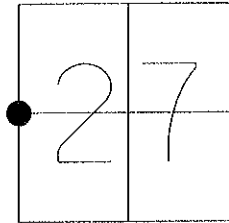
TYPE MONUMENT SMALL RR SPIKE

~~ON SURFACE~~ - BELOW 1.5"

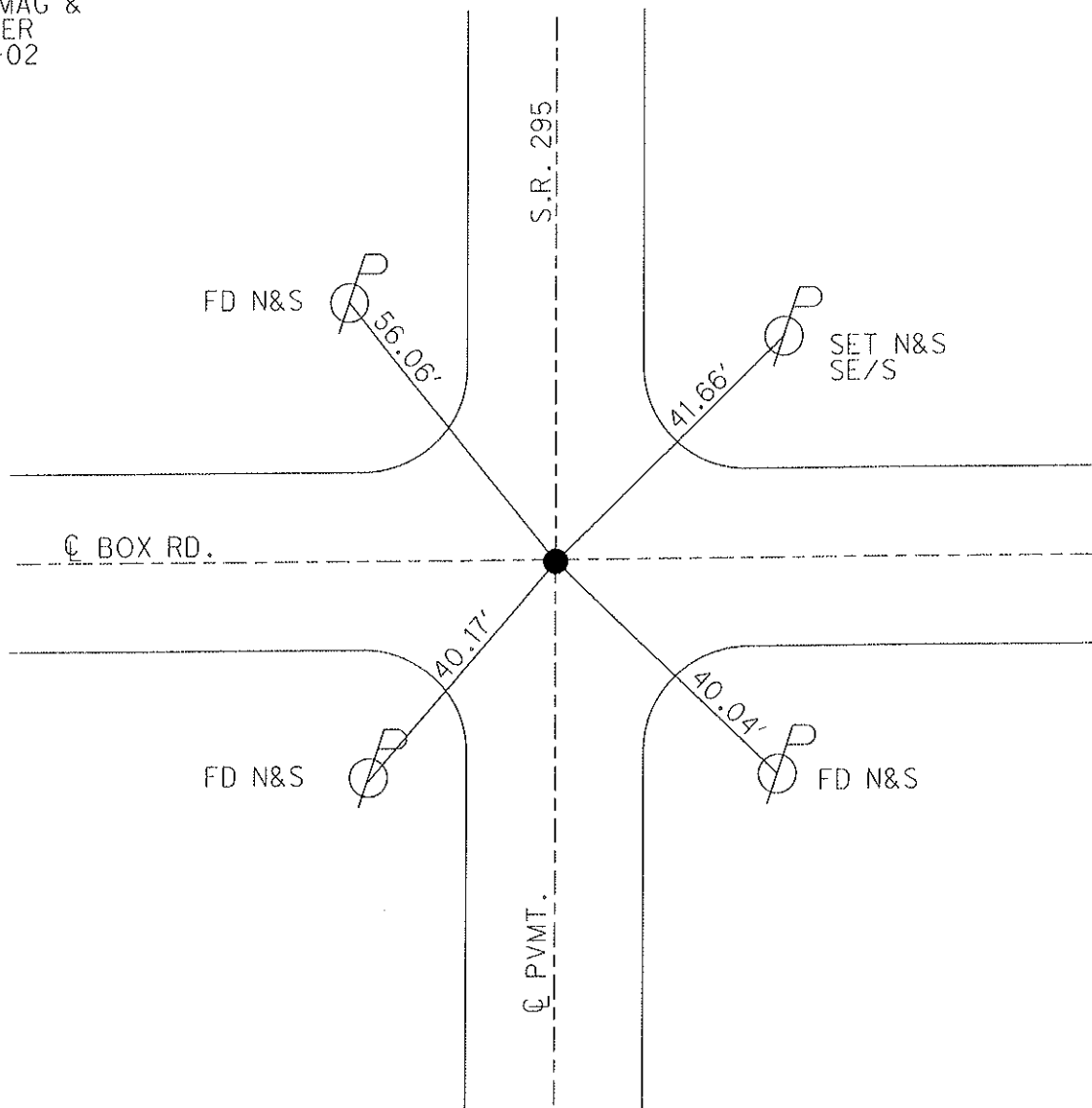
LEFT - Q PAV'T - ~~RIGHT~~ 0.5'

11' TO LT. EDGE PAVEMENT

S.L.M. 61+20



SET MAG &
WASHER
11-21-02
DCH



O.D.O.T. DISTRICT 2 SURVEY OFFICE

PERSONNEL

REFERENCE NO. 4

SHEET 3 OF 35

NOTES LOEHRKE

H.C. CURTIS

R.C. LOEHRKE

DATE 8-15-91

WEATHER CLEAR

TEMP. +72

ROUTE S.R. 295

COUNTY LUCAS

TOWNSHIP PROVIDENCE

SECTION 27

T & N R 9 E

TYPE MONUMENT P.K. Nail

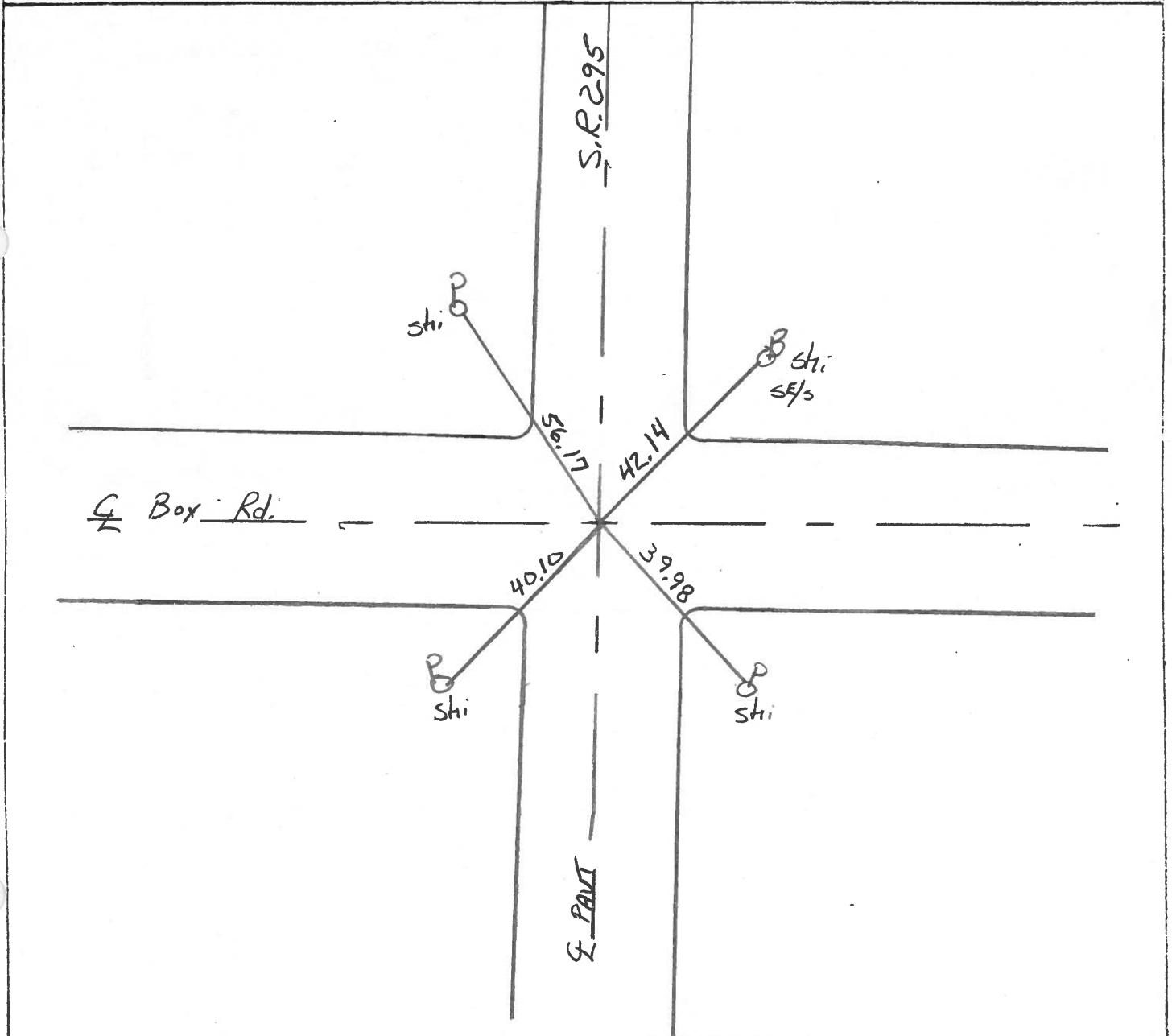
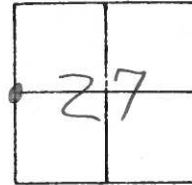
Set P.K./WASHER
3-24-92

ON SURFACE - BELOW YES

LEFT - & PAV'T. - RIGHT YES

TO EDGE PAVEMENT

S.L.M. 61+20



County Lucas S.R. 295

Date 5 April 84

Township Providence

Weather cloudy

Section 27

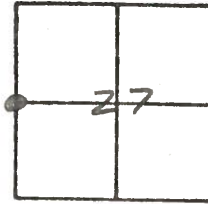
Temp. 45°

T N, R E

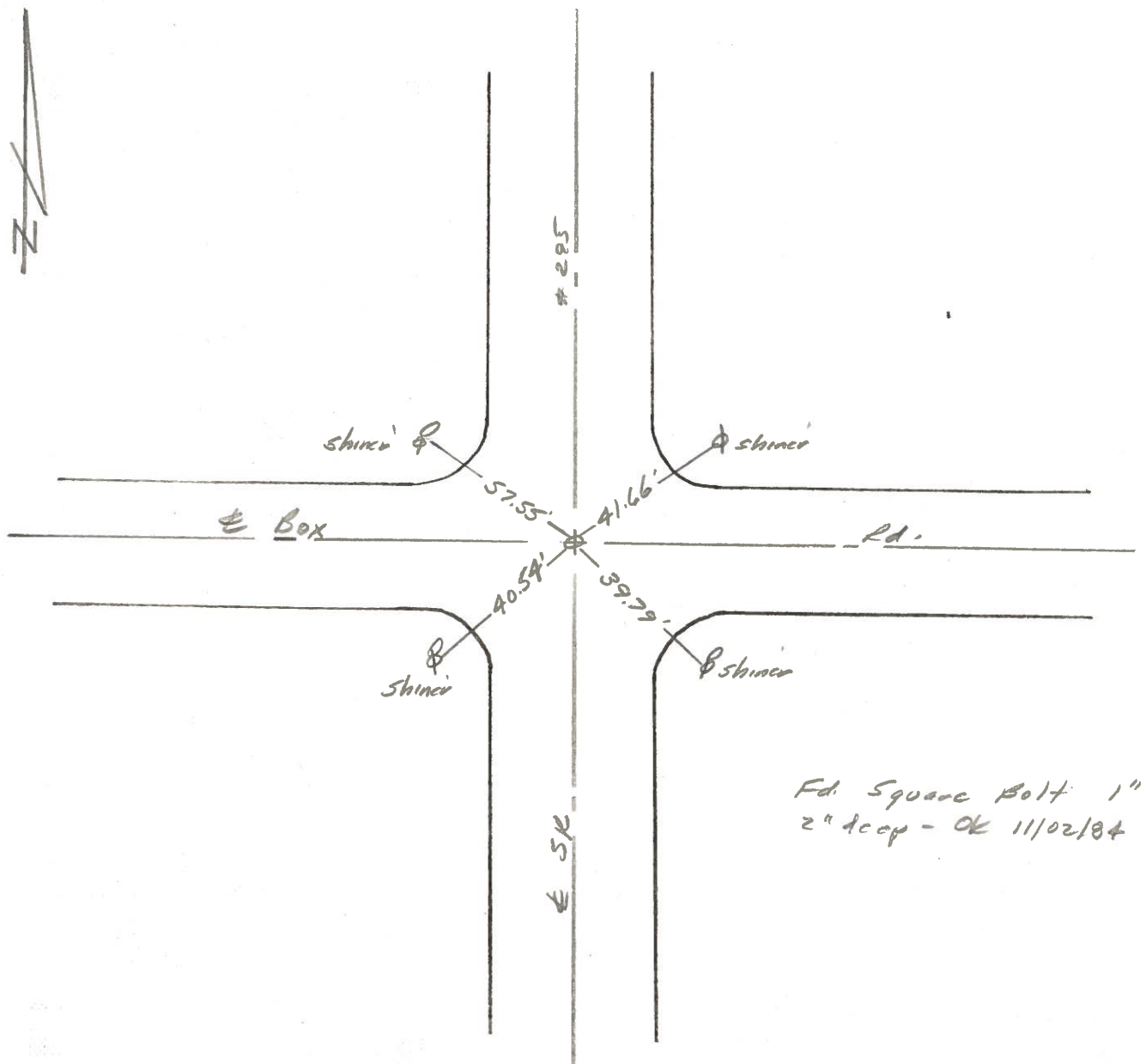
Personnel I. Stone

P. Neuse

D. Curtis



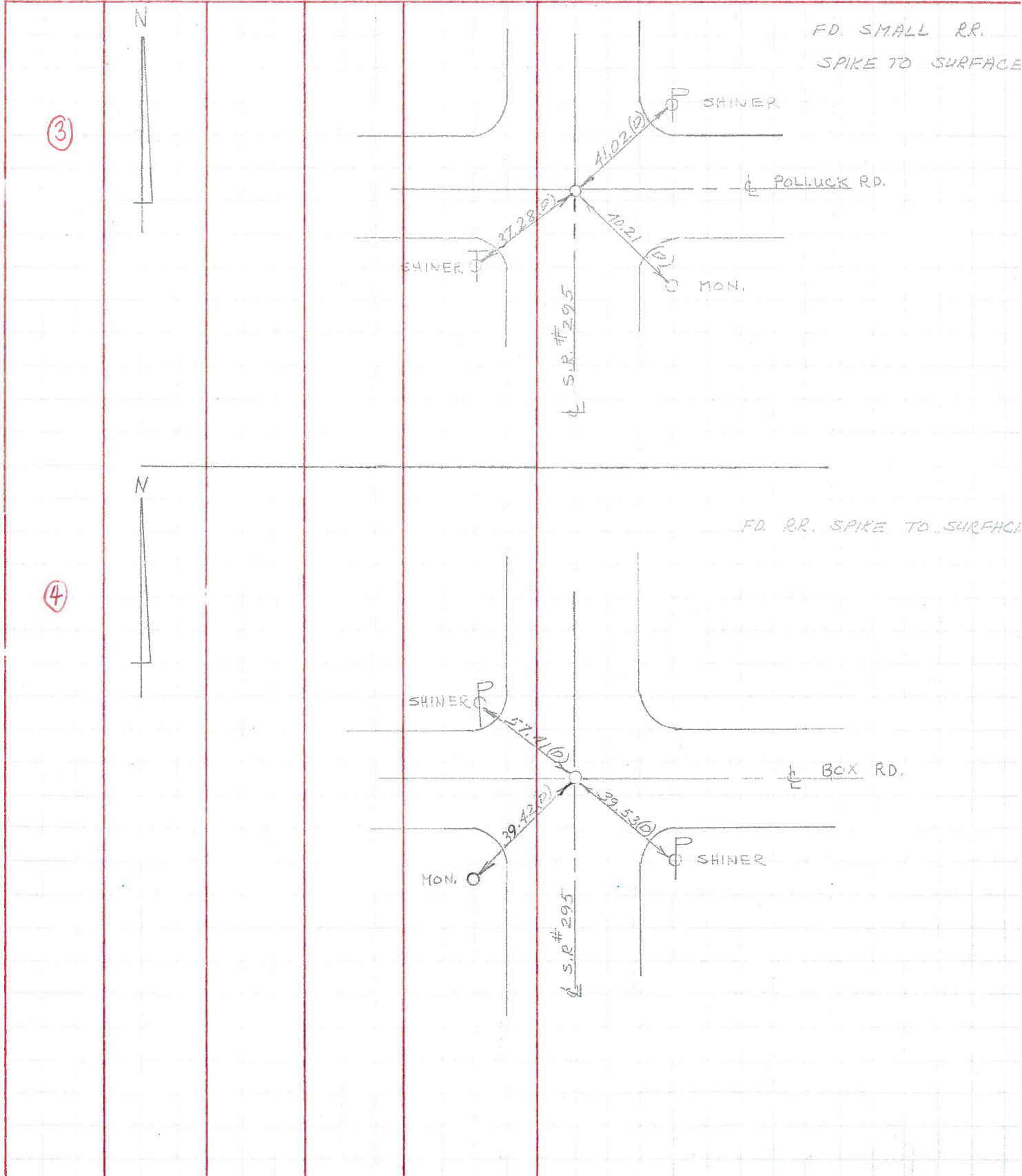
Ref No. 4



PERSONNEL	TITLE	PERSONNEL	TITLE
W. DENNO			
D. CURTIS			
D. STEVENS			
R. BRANNAN			

COUNTY LUCAS DATE JULY 13, 1971
 S. R. #295 WEATHER CLOUDY
 SEC. _____ TEMP. 70±

DESCRIPTION	REFERENCES TO CONTROL POINTS	JOB NO.
	LEFT CENTER LINE RIGHT	



PERSONNEL	TITLE	PERSONNEL	TITLE
<u>Stone</u>	<u>Notes</u>		
<u>Beck</u>	<u>Tape</u>		
<u>Michalak</u>	<u>Tape</u>		

COUNTY Lucas DATE 6 June 68
 S. R. #295 WEATHER Hot
 SEC. _____ TEMP. 87°

DESCRIPTION References to Control Points JOB NO. _____
 LEFT CENTER LINE RIGHT

