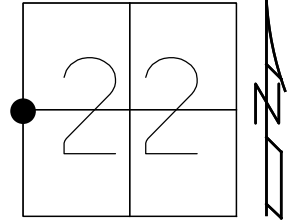


O.D.O.T. DISTRICT 2 SURVEY OFFICE (USE ONLY)

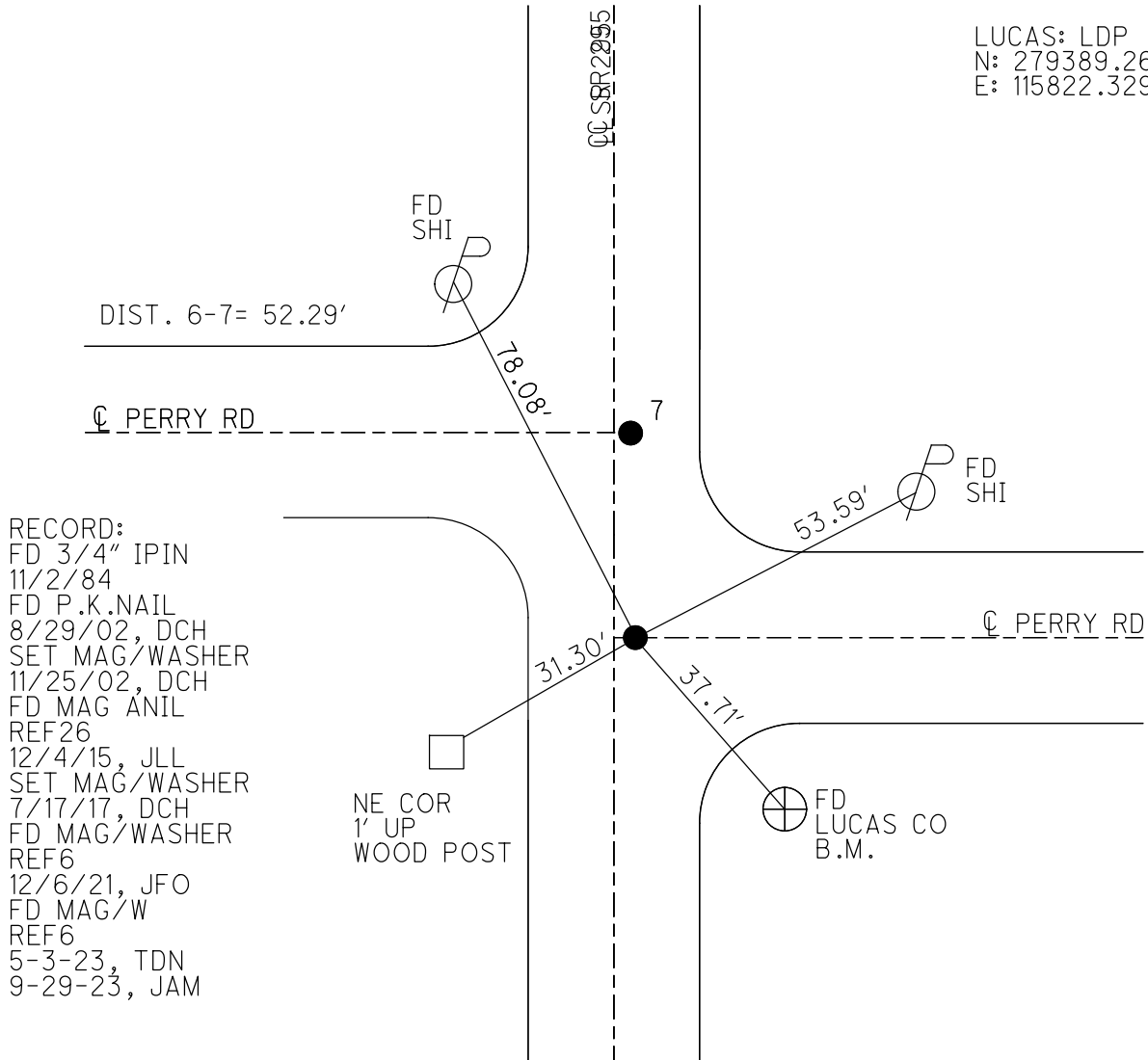
PERSONNEL \_\_\_\_\_ REFERENCE NO. 6 SHEET 6 OF 45  
 NOTES AUBLE DATE 5-3-23 ROUTE SR 295  
 H.C. NIESE WEATHER WINDY COUNTY LUCAS  
 R.C. MILLER TEMP. 53° TOWNSHIP PROVIDENCE  
 DWG BY ASTON PID CHIP SEAL SECTION 22  
 T 6 N R 9 E

TYPE MONUMENT MAG/WASHER  
 ON SURFACE - ~~BELOW~~ ON  
 OFFSET 9.5' TO RT EDGE PAVEMENT  
 STATION: 244+15.38



HORZ. DATUM: NAD83(2011) GEOID: NAVD88 2018  
 GRID: NORTHING: 658395.963 EASTING: 1605118.134

LUCAS: LDP  
 N: 279389.260  
 E: 115822.329

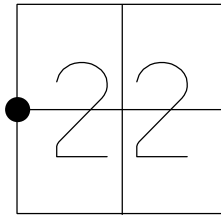


RECORD:  
 FD 3/4" IPIN  
 11/2/84  
 FD P.K.NAIL  
 8/29/02, DCH  
 SET MAG/WASHER  
 11/25/02, DCH  
 FD MAG ANIL  
 REF6  
 12/4/15, JLL  
 SET MAG/WASHER  
 7/17/17, DCH  
 FD MAG/WASHER  
 REF6  
 12/6/21, JFO  
 FD MAG/W  
 REF6  
 5-3-23, TDN  
 9-29-23, JAM

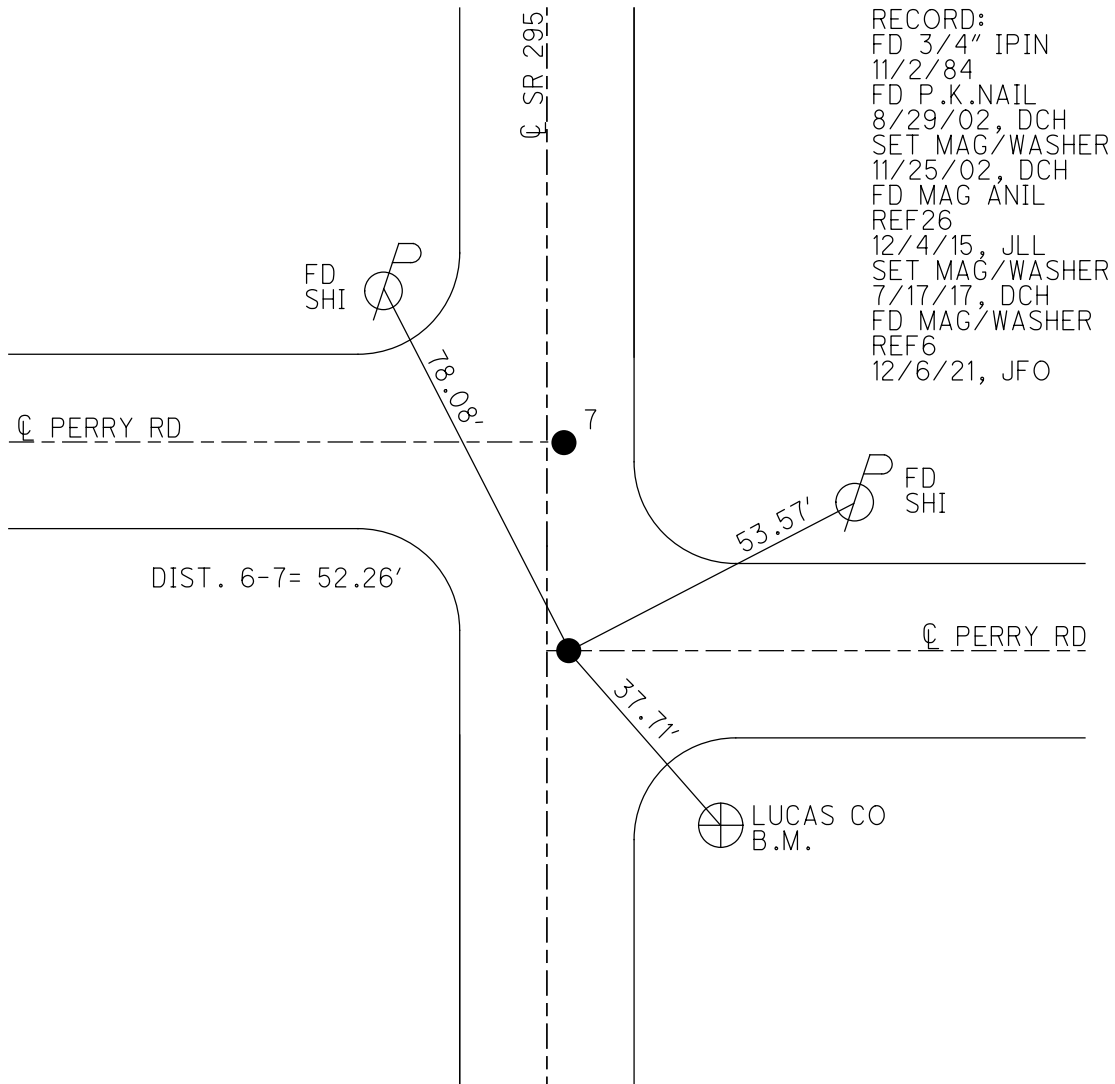
O.D.O.T. DISTRICT 2 SURVEY OFFICE (USE ONLY)

PERSONNEL \_\_\_\_\_ REFERENCE NO. 6 SHEET 6 OF 45  
 NOTES HOMAN DATE 3/17/17 ROUTE SR 295  
 H.C. HOMAN WEATHER CLOUDY COUNTY LUCAS  
 R.C. HELDMAN TEMP. 33° TOWNSHIP PROVIDENCE  
 \_\_\_\_\_ SECTION 22  
 \_\_\_\_\_ T 6 N R 9 E

TYPE MONUMENT \_\_\_\_\_ MAG NAIL \_\_\_\_\_  
 ON SURFACE - ~~BELOW~~ \_\_\_\_\_ ON \_\_\_\_\_  
~~LEFT~~ -  $\odot$  PAV'T RIGHT \_\_\_\_\_ 2" \_\_\_\_\_  
9.5' TO RT EDGE PAVEMENT  
 S.L.M. 244+15.38



GRID: NORTHING: 658395.963 EASTING: 1605118.134

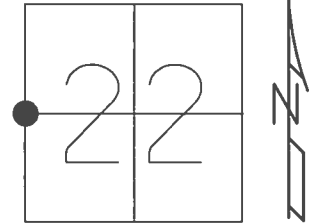


O.D.O.T. DISTRICT 2 SURVEY OFFICE (USE ONLY)

PERSONNEL \_\_\_\_\_ REFERENCE NO. 6 SHEET 6 OF 45

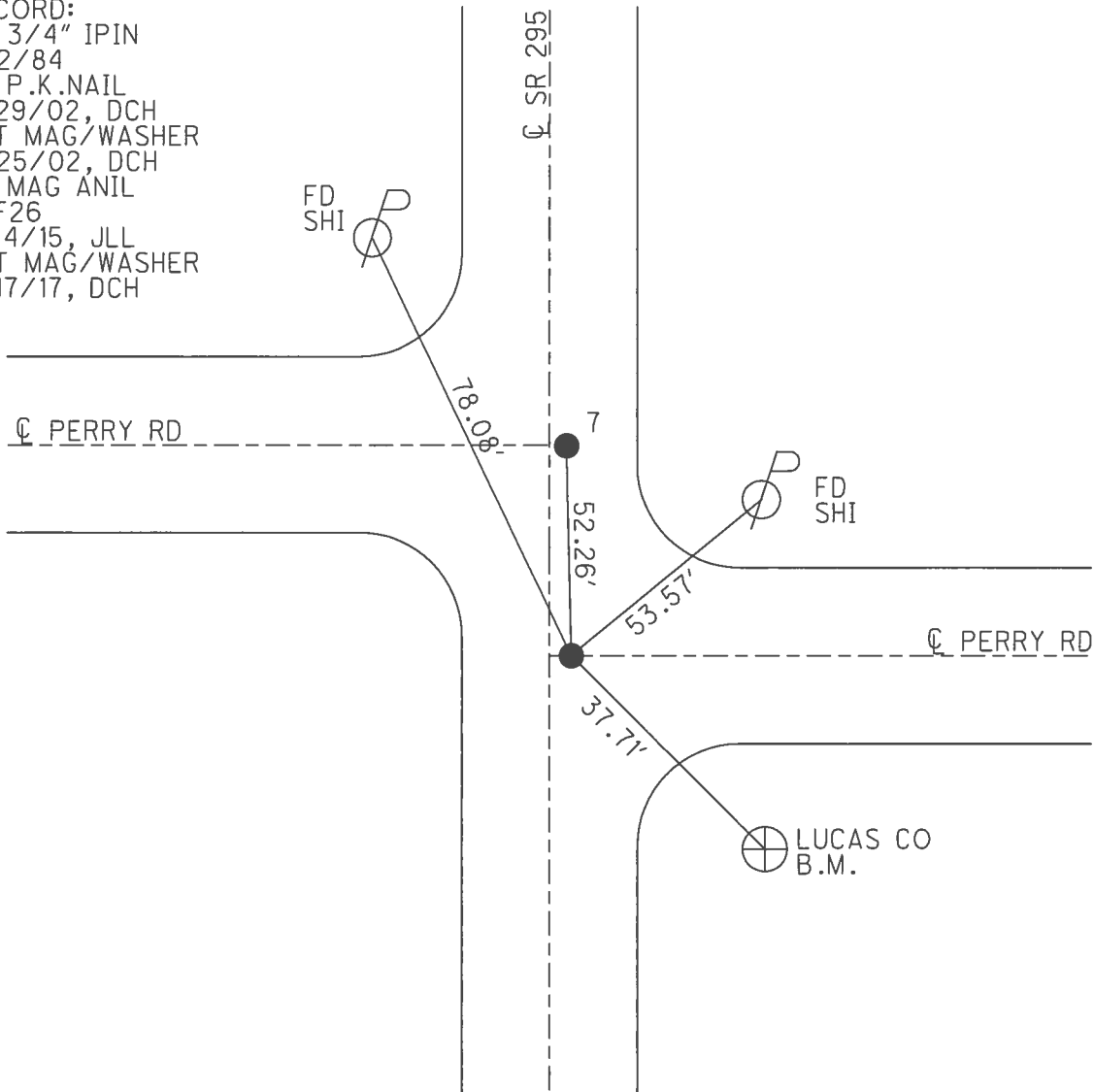
NOTES \_\_\_\_\_ DATE 3/17/17 ROUTE SR 295  
 H.C. HOMAN WEATHER CLOUDY COUNTY LUCAS  
 R.C. HELDMAN TEMP. 33° TOWNSHIP PROVIDENCE  
 \_\_\_\_\_ SECTION 22  
 \_\_\_\_\_ T 6 N R 9 E

TYPE MONUMENT \_\_\_\_\_ MAG NAIL \_\_\_\_\_  
 ON SURFACE - ~~BELOW~~ \_\_\_\_\_ ON \_\_\_\_\_  
~~LEFT~~ - ☉ PAV'T RIGHT 2"  
9.5' TO RT EDGE PAVEMENT  
 S.L.M. 244+15.38



GRID: NORTHING: 658395.980 EASTING: 1605118.141

RECORD:  
 FD 3/4" IPIN  
 11/2/84  
 FD P.K.NAIL  
 8/29/02, DCH  
 SET MAG/WASHER  
 11/25/02, DCH  
 FD MAG ANIL  
 REF26  
 12/4/15, JLL  
 SET MAG/WASHER  
 7/17/17, DCH



# O.D.O.T. DISTRICT 2 SURVEY OFFICE

PERSONNEL

REFERENCE NO. 6

SHEET 6 OF 45

NOTES BEAUMONT

DATE 8-29-02

ROUTE S.R. 295

H.C. HOMAN

WEATHER CLOUDY

COUNTY LUCAS

R.C. BEAUMONT

TEMP. 78°

TOWNSHIP PROVIDENCE

SECTION 22

T 6 N R 9 E

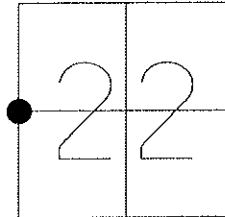
TYPE MONUMENT P.K.NAIL

ON SURFACE - ~~BELOW~~ ON

~~LEFT~~ - Q PAV'T - RIGHT 2"

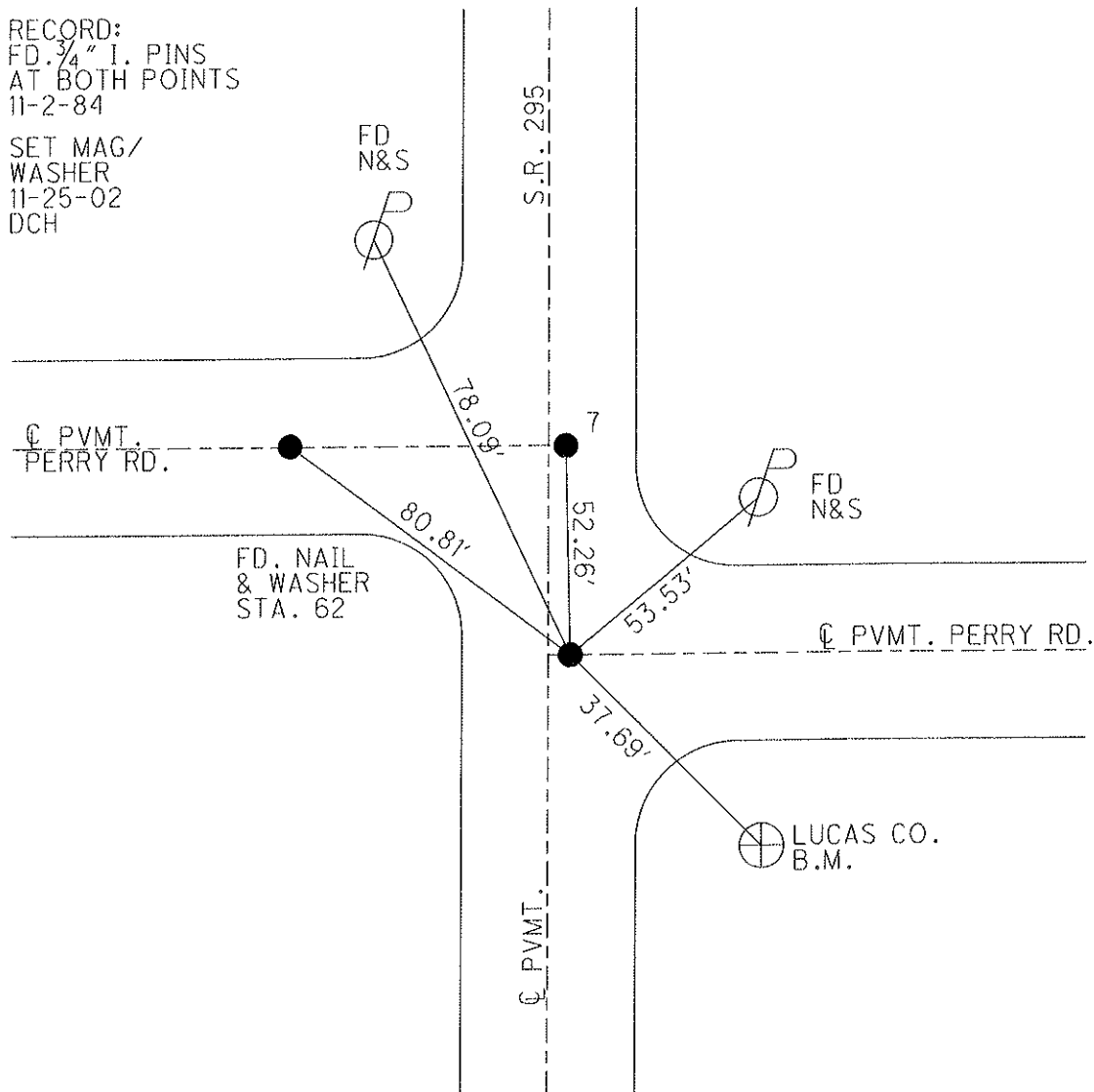
9.5' TO RT. EDGE PAVEMENT

S.L.M. 113+71



RECORD:  
FD.  $\frac{3}{4}$ " I. PINS  
AT BOTH POINTS  
11-2-84

SET MAG/  
WASHER  
11-25-02  
DCH



O.D.O.T. DISTRICT 2 SURVEY OFFICE

PERSONNEL

REFERENCE NO. 6&7

SHEET 6 OF 40

NOTES HOMAN

DATE 8-29-02

ROUTE S.R. 295

H.C. HOMAN

WEATHER CLOUDY

COUNTY LUCAS

R.C. BEAUMONT

TEMP. 78°

TOWNSHIP PROVIDENCE

SECTION 22

T 6 N R 9 E

TYPE MONUMENT 3/4" I. PIN & PK NAIL

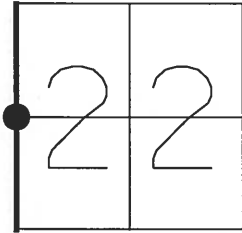
ON SURFACE - BELOW ON SURFACE

LEFT - ☉ PAV'T - RIGHT 2' RIGHT

9.5' TO RT. EDGE PAVEMENT

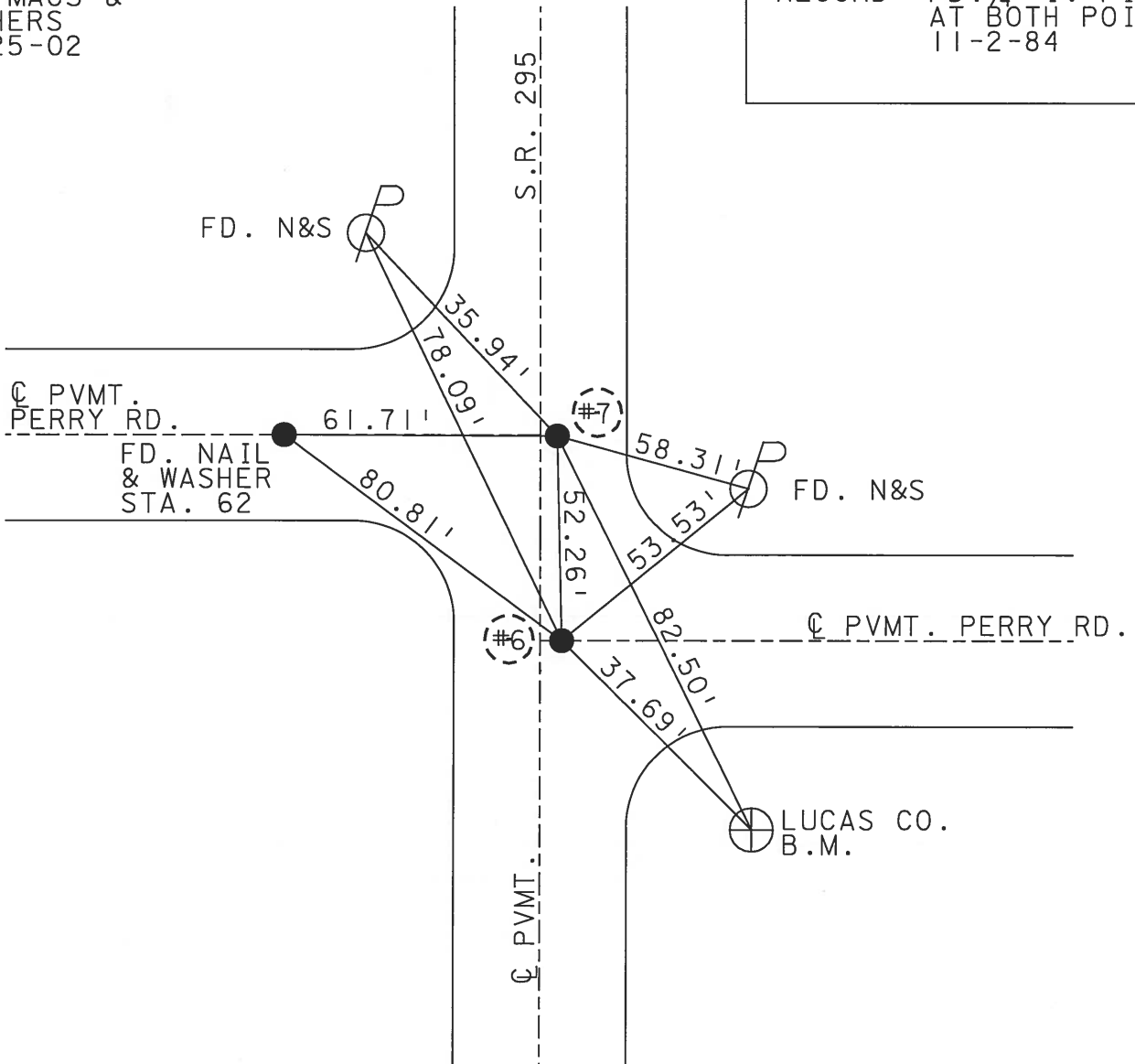
S.L.M. 113+71 & 114+52

6      7



SET MAGS &  
WASHERS  
11-25-02  
DCH

RECORD: FD. 3/4" I. PINS  
AT BOTH POINTS  
11-2-84



# O.D.O.T. DISTRICT 2 SURVEY OFFICE

PERSONNEL \_\_\_\_\_

REFERENCE NO. 6E7

SHEET 5 OF 35

NOTES LOHRKE

H.C. STONE

R.C. CURTIS

DATE 8-15-91

WEATHER CLEAR

TEMP. +78

ROUTE S.R. 295

COUNTY LUCAS

TOWNSHIP PROVIDENCE

SECTION 22

T. 6 N. R. 9 E

Set P.K./WASHERS

TYPE MONUMENT P.K. Nails

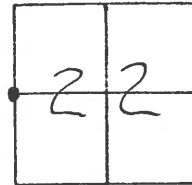
3-24-92

ON SURFACE - BELOW YES

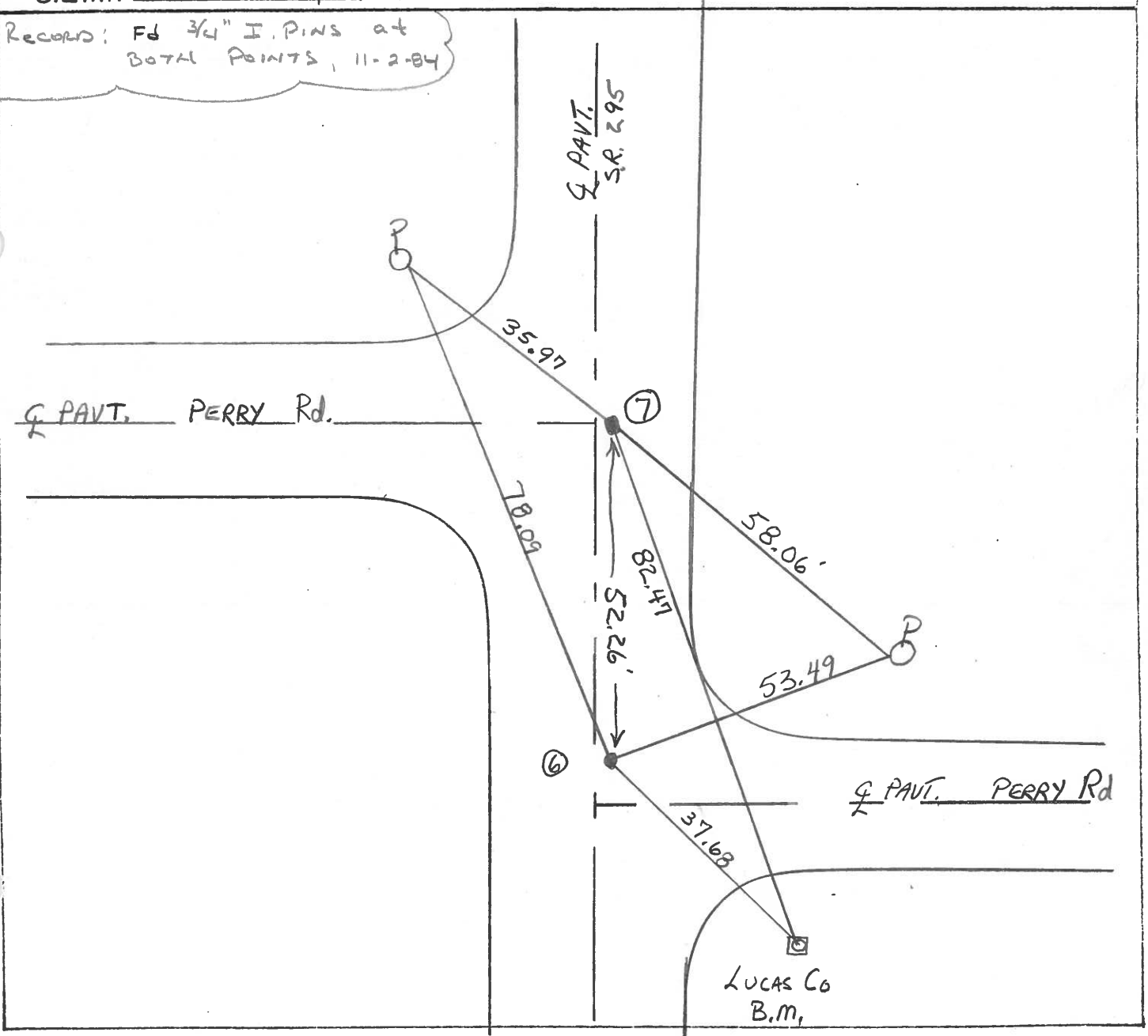
LEFT - Q PAV'T. - RIGHT \_\_\_\_\_

TO \_\_\_\_\_ EDGE PAVEMENT

S.L.M. 114+27    E 114+52



Records: Fd 3/4" I. PINS at  
BOTH POINTS, 11-2-84



LUCAS Co  
B.M.

Q.D.O.T. DISTRICT 2 SURVEY OFFICE

SHEET 5 OF     

County Lucas S.R. 295

Date 3 April 84

Township Providence

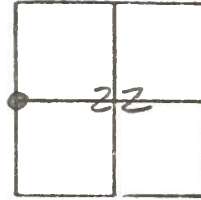
Weather Cloudy

Section 22

Temp. 45°

T    N, R    E

Personnel I. Stone



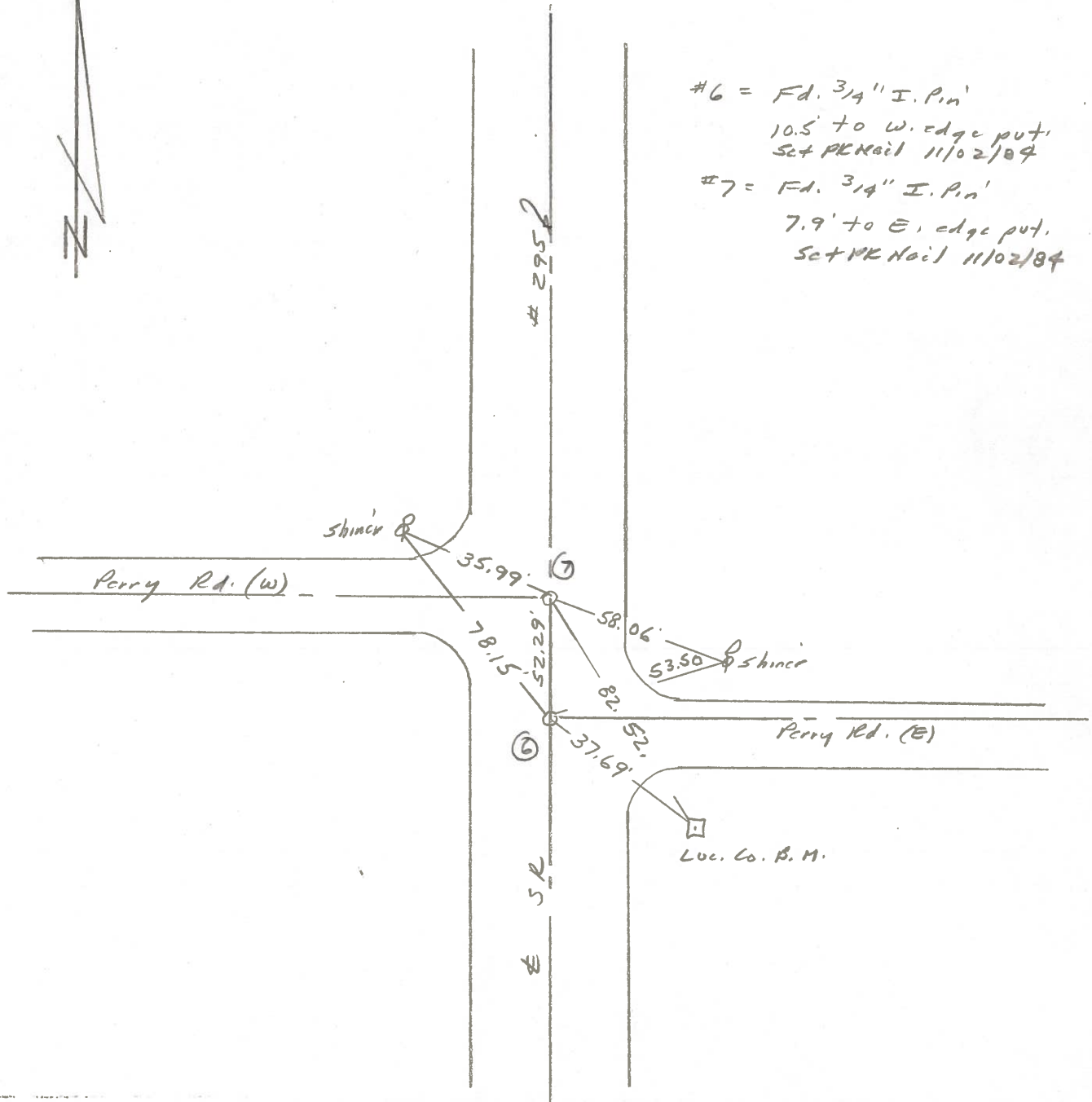
P. Newsc

D. Curtis

Ref. No. 6 & 7



#6 = Fd. 3/4" I. Pin'  
10.5' to W. edge put.  
Set PK Nail 11/02/84  
#7 = Fd. 3/4" I. Pin'  
7.9' to E. edge put.  
Set PK Nail 11/02/84



# 295

6

Luc. Co. B.M.

Luc. Co. B.M.

PERSONNEL TITLE PERSONNEL TITLE

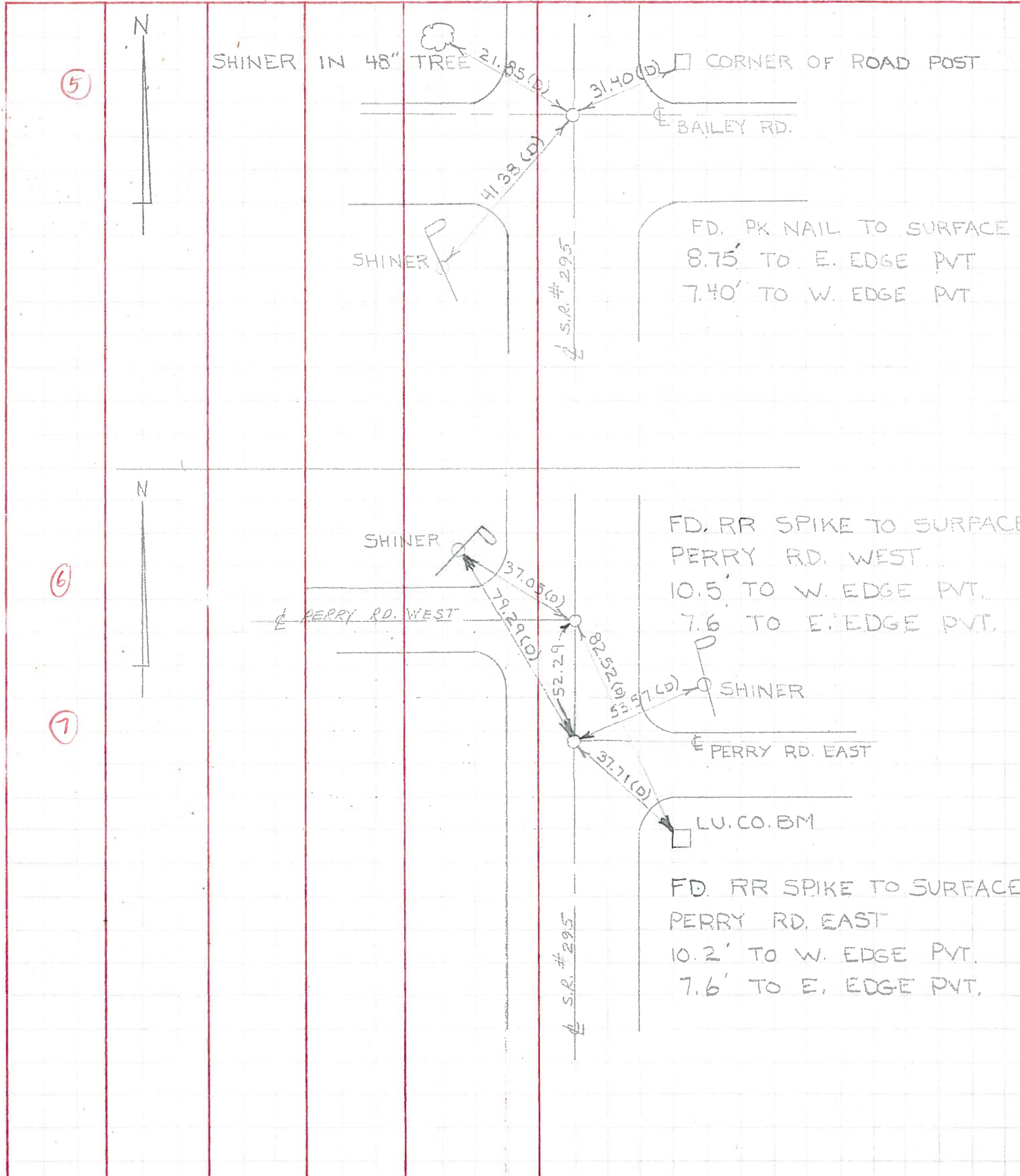
W. DENNO  
D. CURTIS  
D. STEVENS  
R. BRANNEN

COUNTY LUCAS DATE JULY 13, 1971

S. R. # 295 WEATHER CLOUDY

SEC. \_\_\_\_\_ TEMP. 70 ±

DESCRIPTION REFERENCES TO CONTROL POINTS LEFT CENTER LINE RIGHT JOB NO. \_\_\_\_\_





PERSONNEL	TITLE	PERSONNEL	TITLE	COUNTY	DATE
Stone	Notes			Lucas	6 June 68
Beck	Tape			S. R. # 295	WEATHER Hot
Michaelok	Tape			SEC.	TEMP. 87°

DESCRIPTION References to Control Points JOB NO. \_\_\_\_\_

