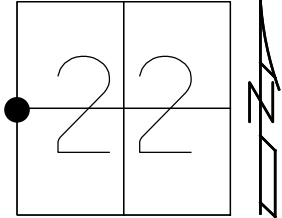


O.D.O.T. DISTRICT 2 SURVEY OFFICE (USE ONLY)

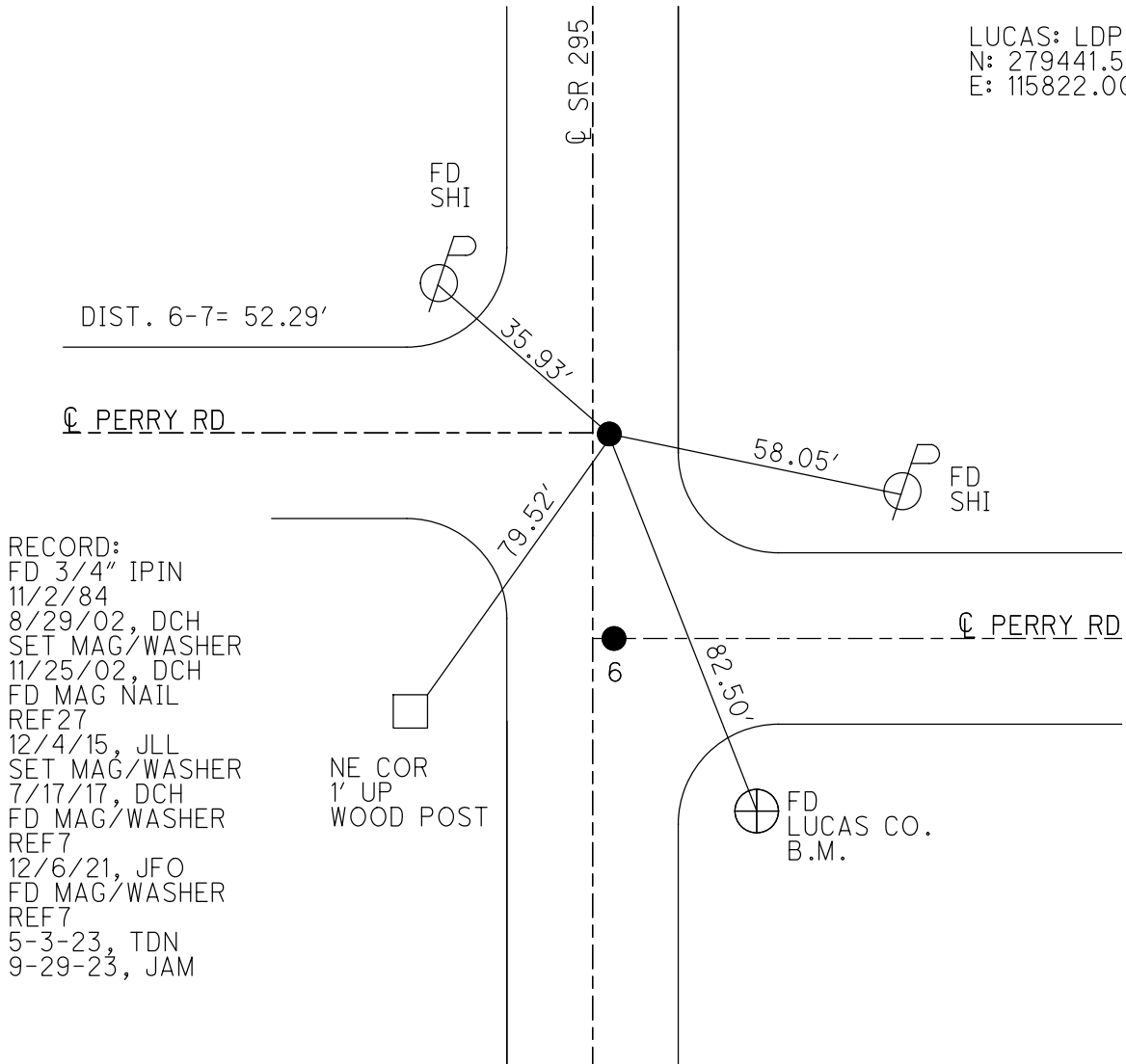
PERSONNEL _____ REFERENCE NO. 7 SHEET 7 OF 45
 NOTES AUBLE DATE 5-3-23 ROUTE SR 295
 H.C. NIESE WEATHER WINDY COUNTY LUCAS
 R.C. MILLER TEMP. 53° TOWNSHIP PROVIDENCE
 DWG BY ASTON PID CHIP SEAL SECTION 22
 T 6 N R 9 E

TYPE MONUMENT MAG/WASHER
 ON SURFACE - ~~BELOW~~ ON
 OFFSET C PAVEMENT 1.5" ~~RT~~ : RT
9.5' TO RT EDGE PAVEMENT
 STATION: 244+67.65



HORZ. DATUM: NAD83(2011) GEOID: NAVD88 2018
 GRID: NORTHING: 658448.237 EASTING: 1605118.492

LUCAS: LDP
 N: 279441.552
 E: 115822.002



RECORD:
 FD 3/4" IPIN
 11/2/84
 8/29/02, DCH
 SET MAG/WASHER
 11/25/02, DCH
 FD MAG NAIL
 REF27
 12/4/15, JLL
 SET MAG/WASHER
 7/17/17, DCH
 FD MAG/WASHER
 REF7
 12/6/21, JFO
 FD MAG/WASHER
 REF7
 5-3-23, TDN
 9-29-23, JAM

O.D.O.T. DISTRICT 2 SURVEY OFFICE (USE ONLY)

PERSONNEL _____ REFERENCE NO. 7 SHEET 7 OF 45

NOTES HOMAN DATE 3/17/17 ROUTE SR 295

H.C. HOMAN WEATHER CLOUDY COUNTY LUCAS

R.C. HELDMAN TEMP. 33° TOWNSHIP PROVIDENCE

SECTION 22

T 6 N R 9 E

TYPE MONUMENT MAG NAIL

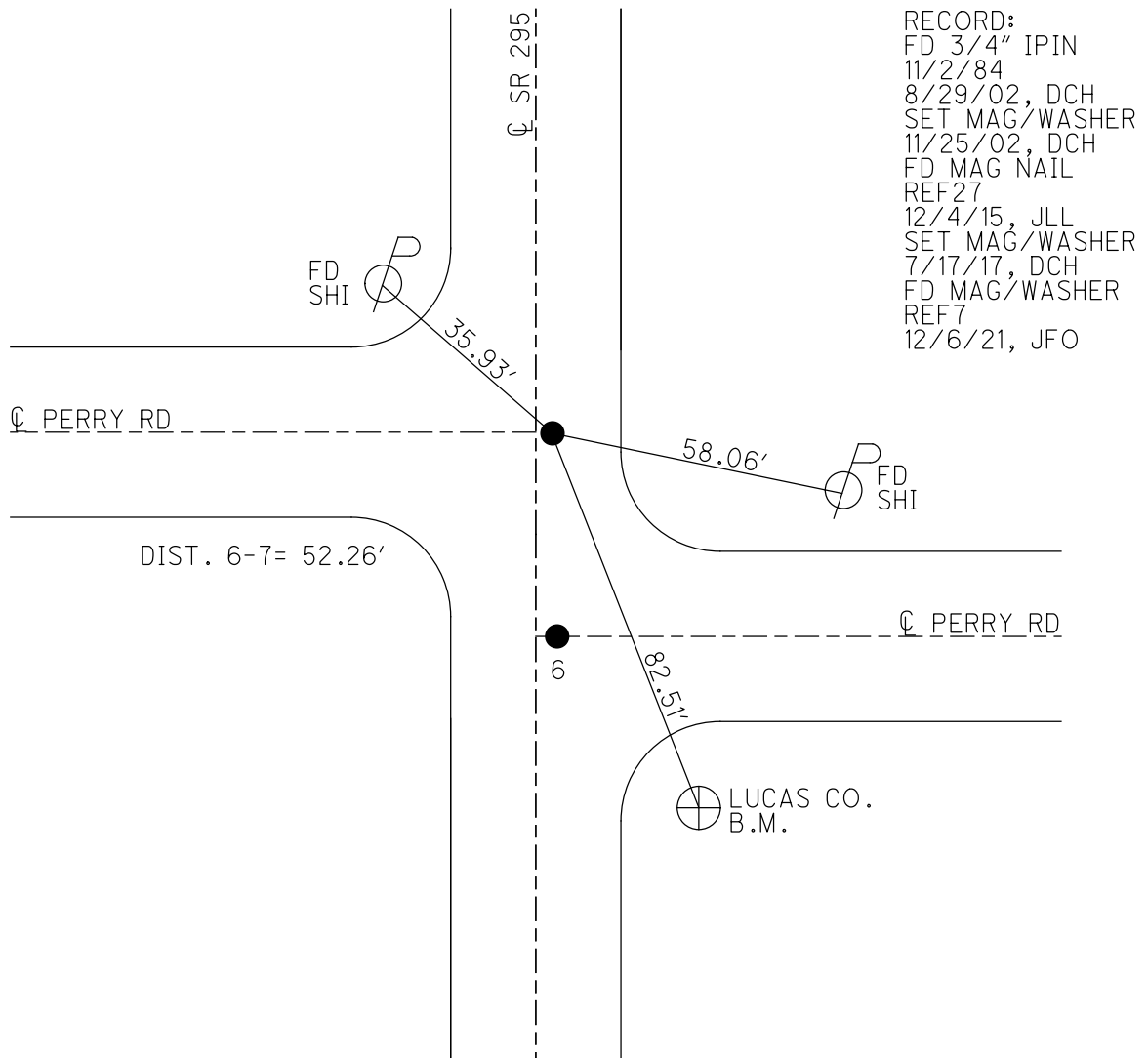
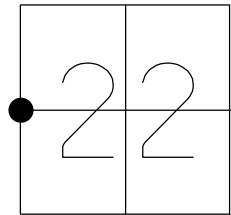
ON SURFACE - ~~BELOW~~ ON

~~LEFT~~ - Q PAV'T - RIGHT 1.5'

9.5' TO RT EDGE PAVEMENT

S.L.M. 244+67.65

GRID: NORTHING: 658448.237 EASTING: 1605118.492



O.D.O.T. DISTRICT 2 SURVEY OFFICE

PERSONNEL

REFERENCE NO. 7

SHEET 7 OF 45

NOTES BEAUMONT

DATE 8-29-02

ROUTE S.R. 295

H.C. HOMAN

WEATHER CLOUDY

COUNTY LUCAS

R.C. BEAUMONT

TEMP. 78°

TOWNSHIP PROVIDENCE

SECTION 22

T 6 N R 9 E

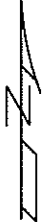
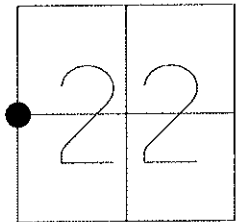
TYPE MONUMENT 3/4" IRON PIN

ON SURFACE - ~~BELOW~~ ON

~~LEFT~~ - Q PAV'T - RIGHT 2"

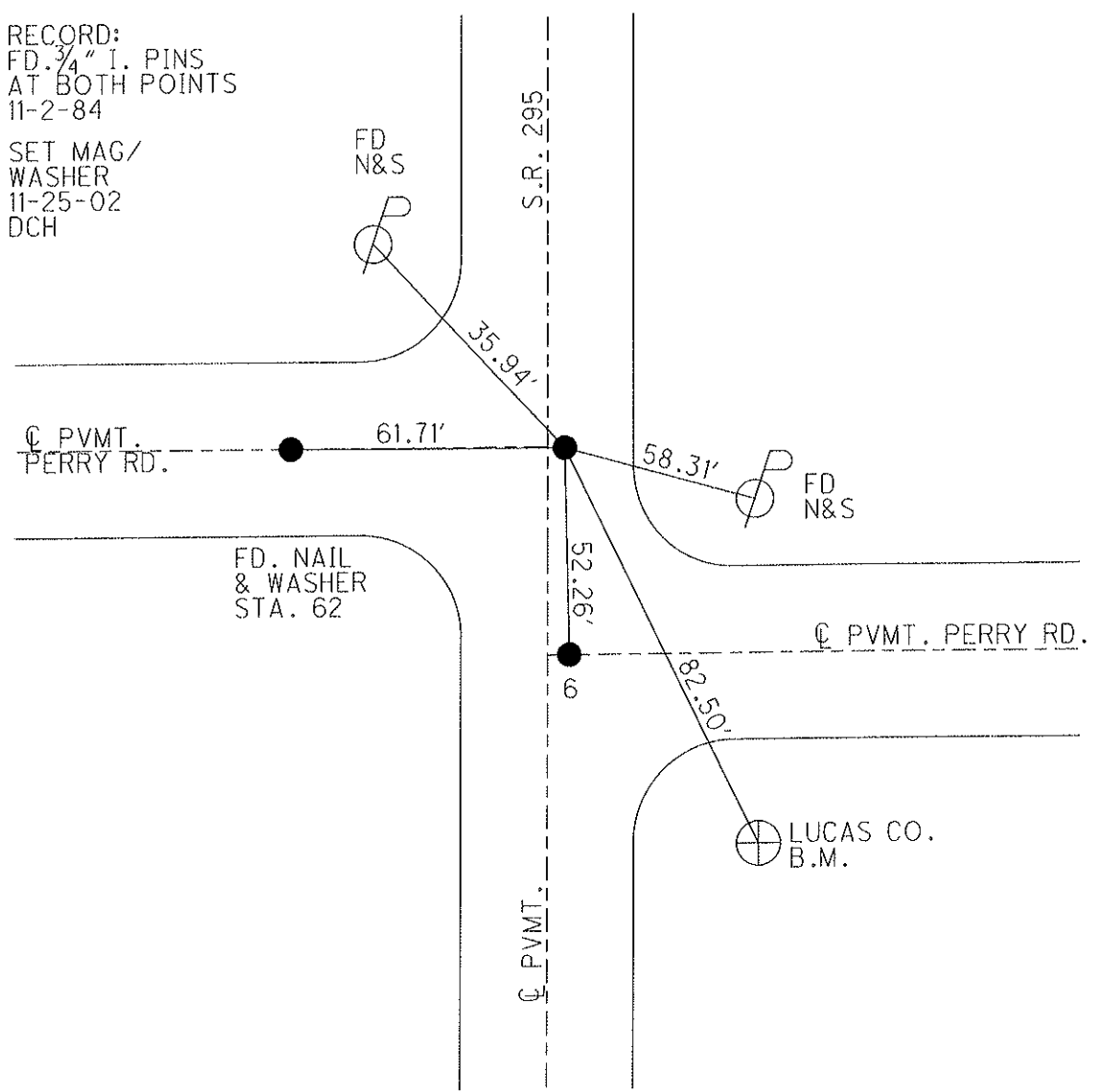
9.5' TO RT. EDGE PAVEMENT

S.L.M. 114+52



RECORD:
FD. 3/4" I. PINS
AT BOTH POINTS
11-2-84

SET MAG/
WASHER
11-25-02
DCH



O.D.O.T. DISTRICT 2 SURVEY OFFICE

PERSONNEL

REFERENCE NO. 6&7

SHEET 6 OF 40

NOTES HOMAN

DATE 8-29-02

ROUTE S.R. 295

H.C. HOMAN

WEATHER CLOUDY

COUNTY LUCAS

R.C. BEAUMONT

TEMP. 78°

TOWNSHIP PROVIDENCE

SECTION 22

T 6 N R 9 E

TYPE MONUMENT 3/4" I. PIN & PK NAIL

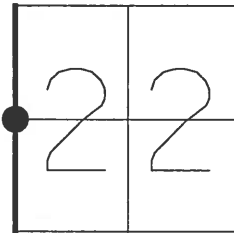
ON SURFACE - BELOW ON SURFACE

LEFT - Q PAV'T - RIGHT 2' RIGHT

9.5' TO RT. EDGE PAVEMENT

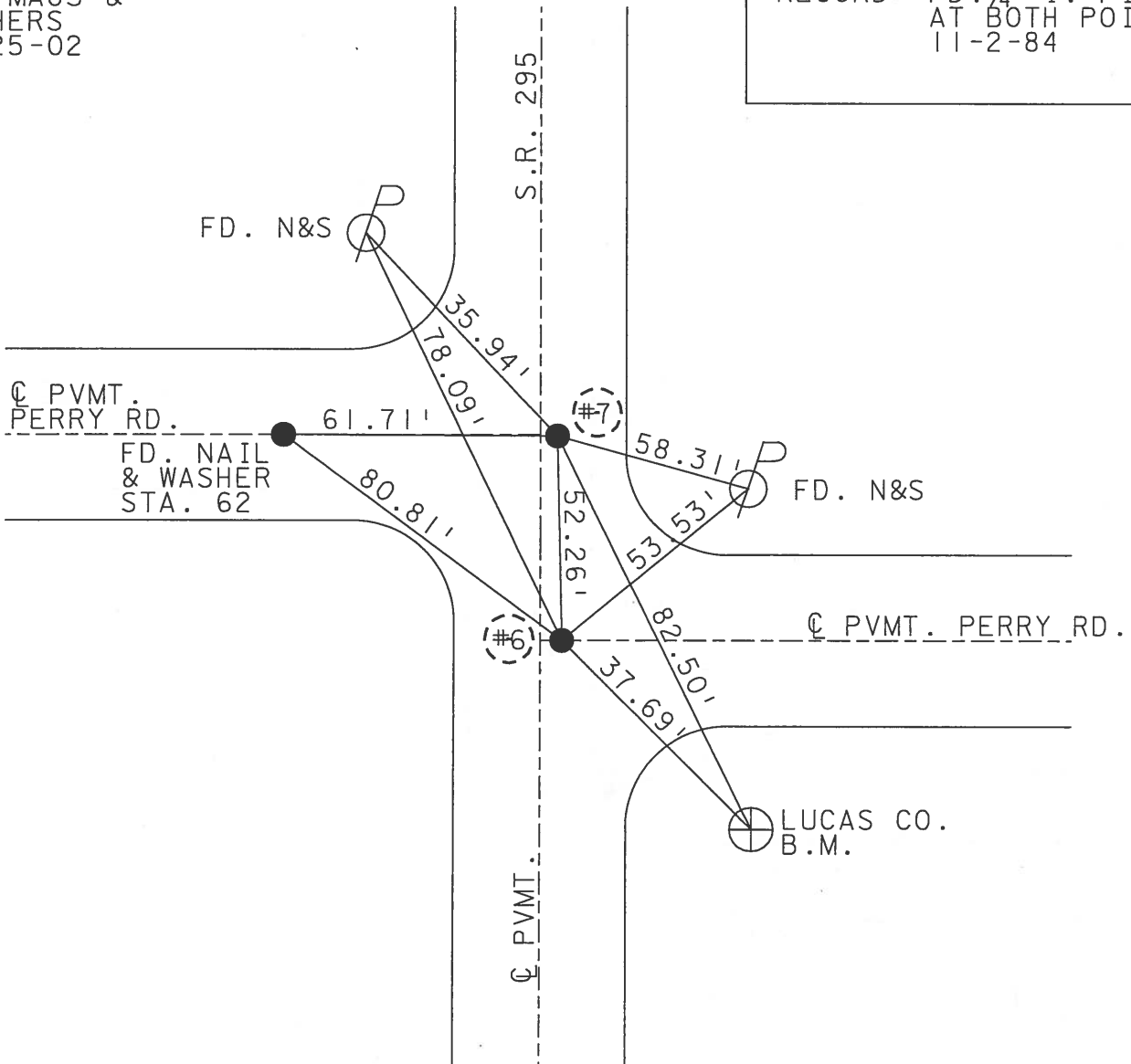
S.L.M. 113+71 & 114+52

6 7



SET MAGS &
WASHERS
11-25-02
DCH

RECORD: FD. 3/4" I. PINS
AT BOTH POINTS
11-2-84



Q.D.O.T. DISTRICT 2 SURVEY OFFICE

SHEET 5 OF

County Lucas S.R. 295

Township Providence

Section 22

T.N, R.E

Personnel I. Stone

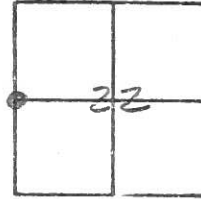
P. Neuse

D. Curtis

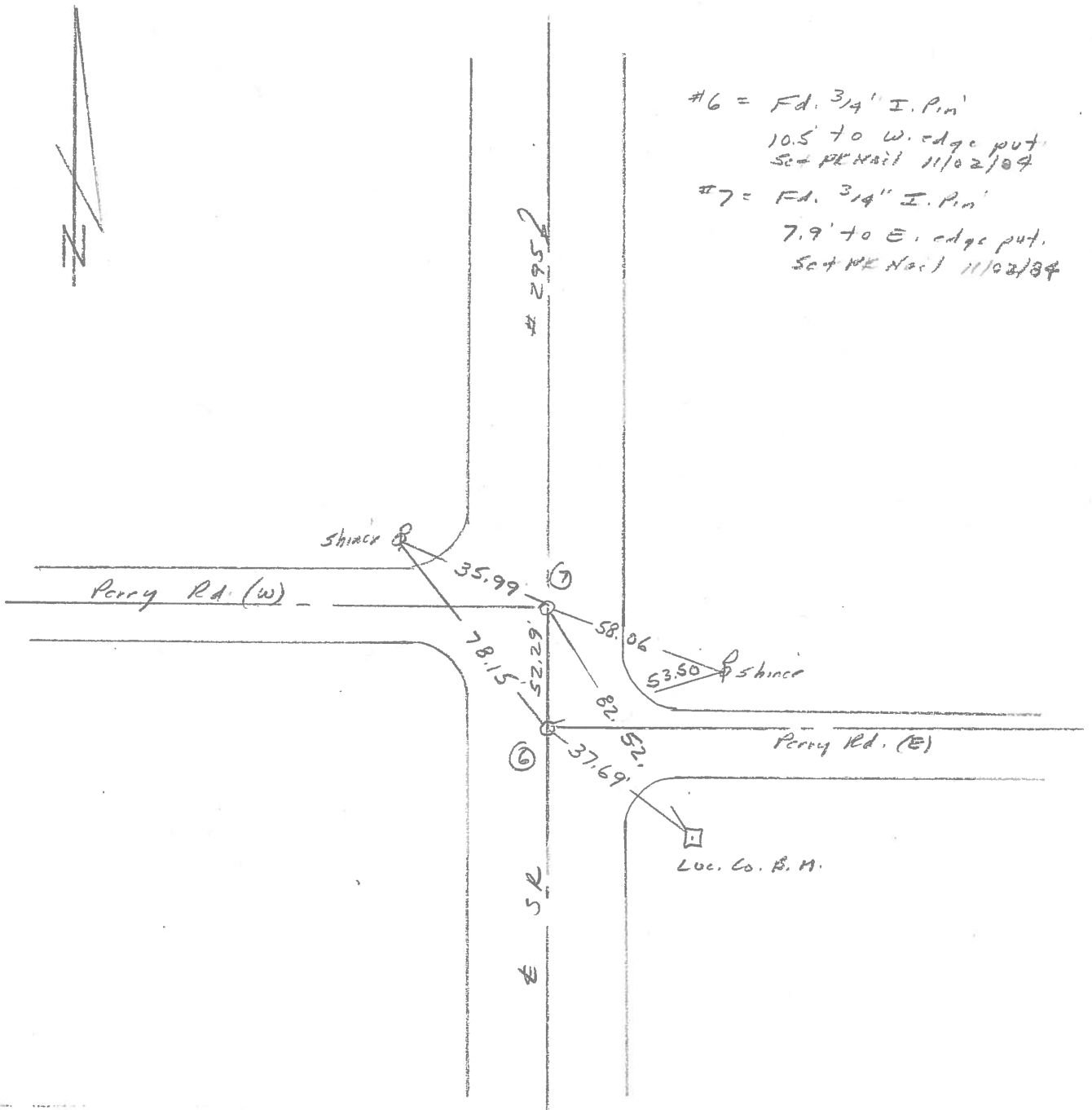
Date 3 April 84

Weather Cloudy

Temp. 45°



Ref. No. 697



#6 = Fd. 3/4" I. Pin
10.5' to W. edge put.
Set PK Nail 11/02/84
#7 = Fd. 3/4" I. Pin
7.9' to E. edge put.
Set PK Nail 11/02/84

PERSONNEL TITLE PERSONNEL TITLE

W. DENNO

COUNTY LUCAS

DATE JULY 13, 1971

D. CURTIS

S. R. # 295

WEATHER CLOUDY

D. STEVENS

SEC.

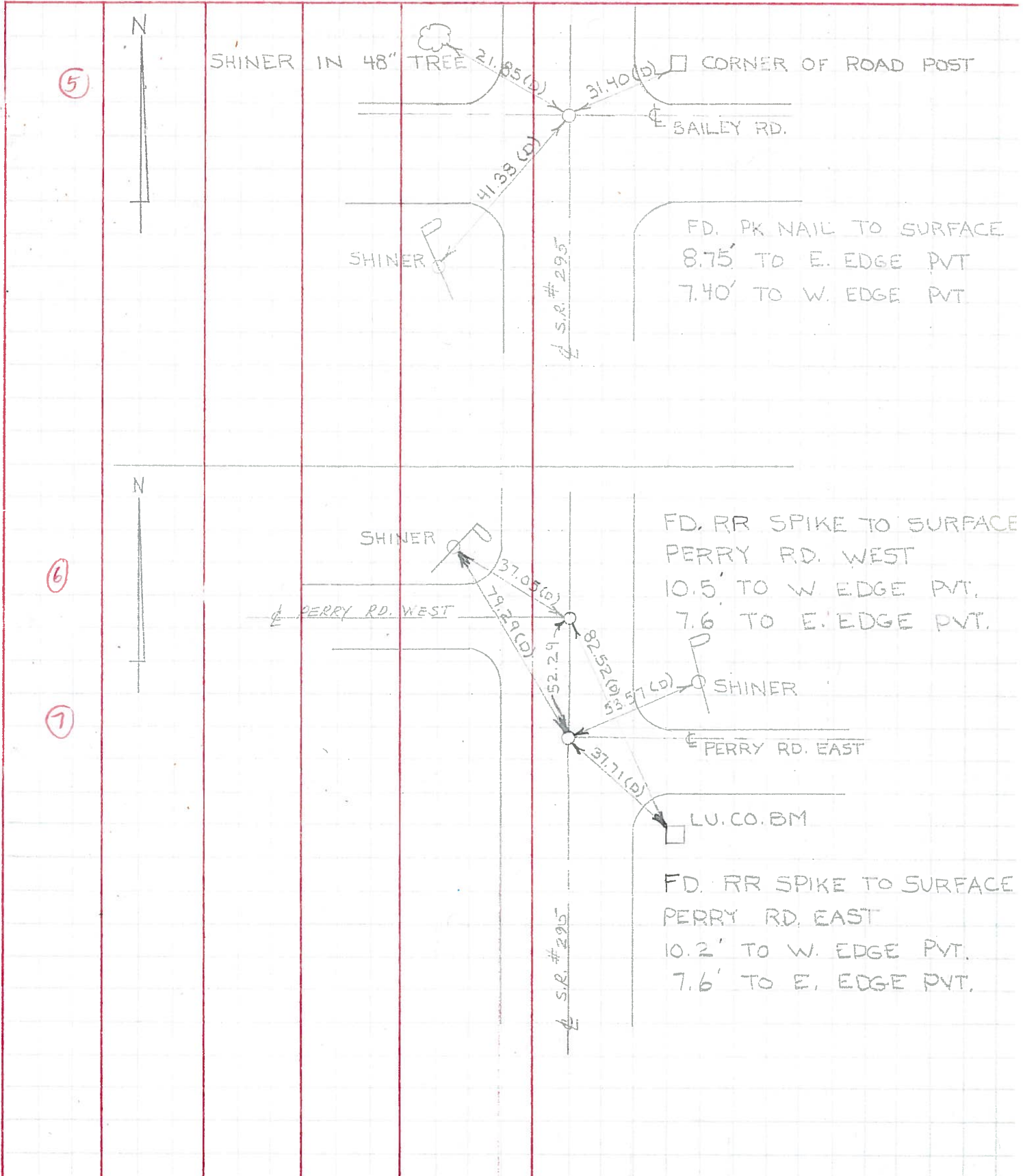
TEMP. 70 ±

R. BRANNAN

DESCRIPTION

REFERENCES TO CONTROL POINTS
LEFT CENTER LINE RIGHT

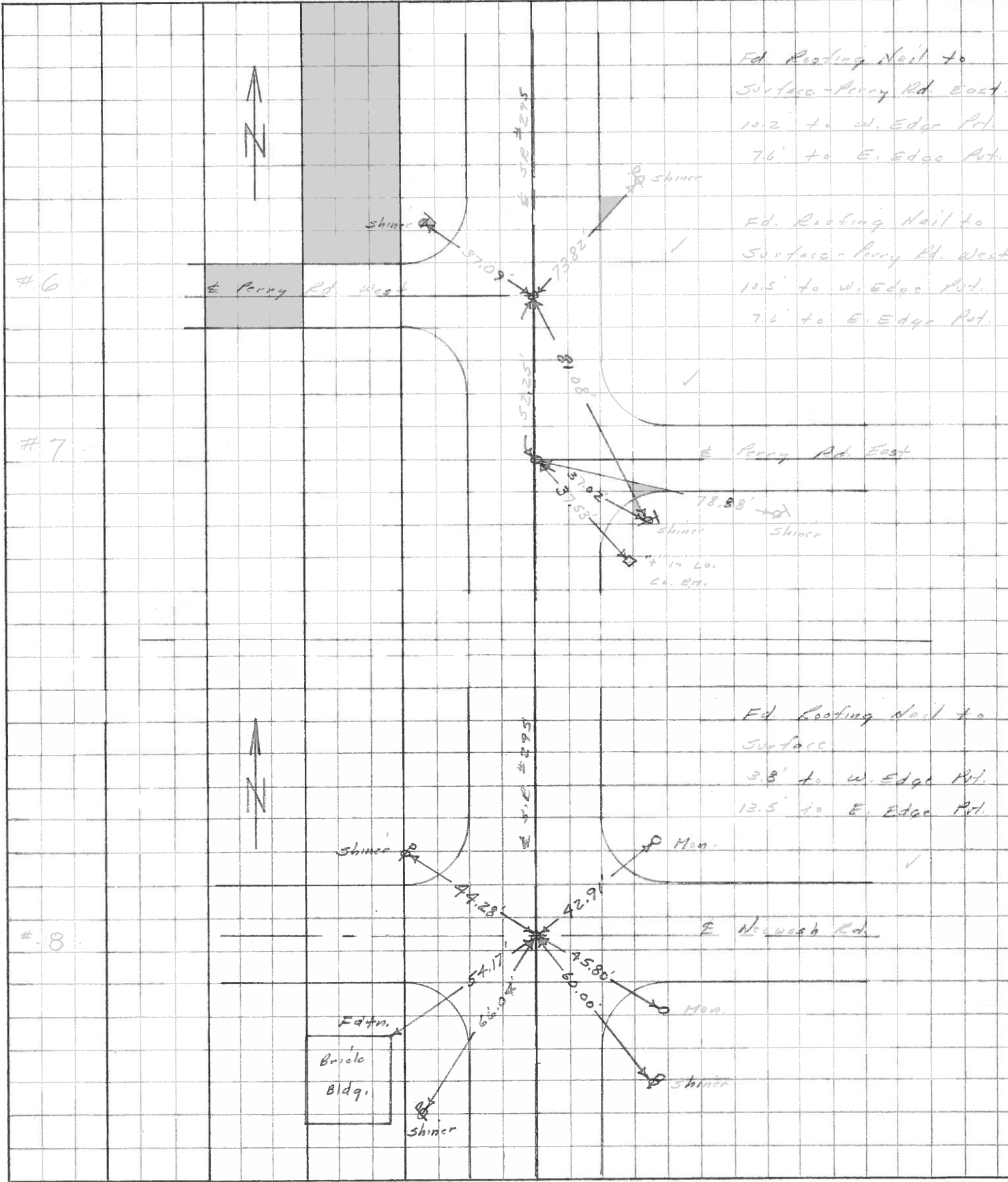
JOB NO.



PERSONNEL	TITLE	PERSONNEL	TITLE
Stone	Notes		
Beck	Tap		
Michaelak	Tap		

COUNTY Lucas DATE 6 June 68
 S. R. # 295 WEATHER Hot
 SEC _____ TEMP. 87°

DESCRIPTION References to Control Points JOB NO. _____
 LEFT CENTER LINE RIGHT



Ed. Roofing Nail to
 Surface - Perry Rd. East.
 10.2' to W. Edge Pt.
 7.6' to E. Edge Pt.

Ed. Roofing Nail to
 Surface - Perry Rd. West
 10.5' to W. Edge Pt.
 7.6' to E. Edge Pt.

Ed. Roofing Nail to
 Surface
 3.8' to W. Edge Pt.
 13.5' to E. Edge Pt.

Edfm.
 Brick
 Bldg.