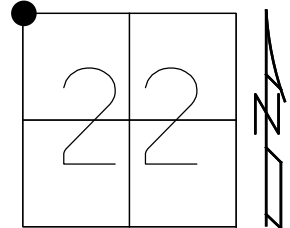


O.D.O.T. DISTRICT 2 SURVEY OFFICE (USE ONLY)

PERSONNEL \_\_\_\_\_ REFERENCE NO. 8 SHEET 8 OF 45  
 NOTES AUBLE DATE 5-3-23 ROUTE SR 295  
 H.C. NIESE WEATHER WINDY COUNTY LUCAS  
 R.C. MILLER TEMP. 49° TOWNSHIP PROVIDENCE  
 DWG BY ASTON PID CHIP SEAL SECTION 22  
 T 6 N R 9 E

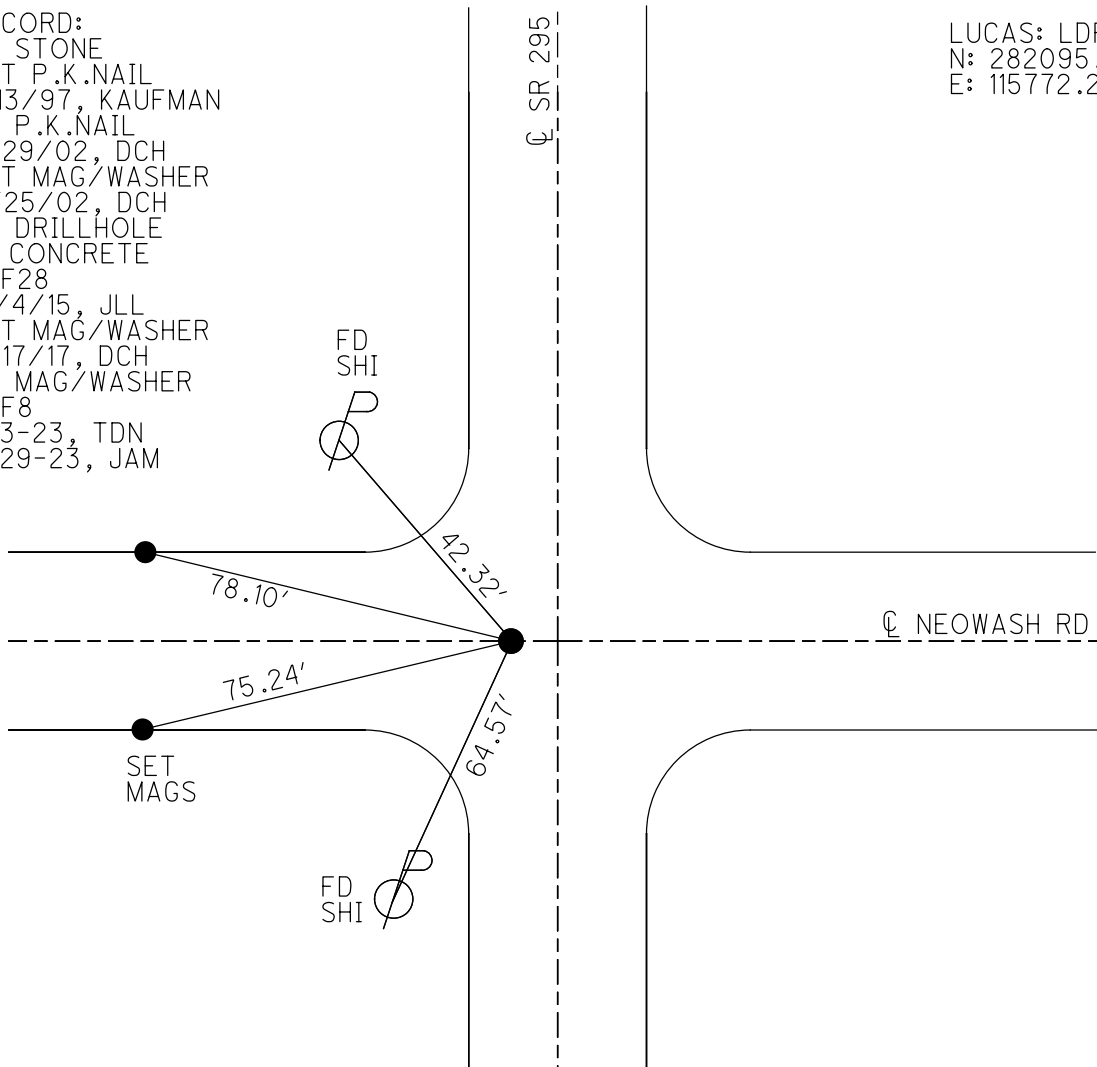
TYPE MONUMENT MAG/WASHER  
 ON SURFACE - ~~BELOW~~ ON  
 OFFSET Q PAVEMENT 5' LT : ~~RT~~  
6' TO LT EDGE PAVEMENT  
 STATION: 271+22.15



HORIZ.DATUM: NAD83(2011) GEOID: NAVD88 2018  
 GRID: NORTHING: 661102.719 EASTING: 1605103.667

RECORD:  
 FD STONE  
 SET P.K.NAIL  
 1/13/97, KAUFMAN  
 FD P.K.NAIL  
 8/29/02, DCH  
 SET MAG/WASHER  
 11/25/02, DCH  
 FD DRILLHOLE  
 IN CONCRETE  
 REF28  
 12/4/15, JLL  
 SET MAG/WASHER  
 7/17/17, DCH  
 FD MAG/WASHER  
 REF8  
 5-3-23, TDN  
 9-29-23, JAM

LUCAS: LDP  
 N: 282095.730  
 E: 115772.207



O.D.O.T. DISTRICT 2 SURVEY OFFICE (USE ONLY)

PERSONNEL \_\_\_\_\_ REFERENCE NO. 8 SHEET 8 OF 45

NOTES HOMAN DATE 3/17/17 ROUTE SR 295

H.C. HOMAN WEATHER CLOUDY COUNTY LUCAS

R.C. HELDMAN TEMP. 33° TOWNSHIP PROVIDENCE

SECTION 22

T 6 N R 9 E

TYPE MONUMENT DRILLH IN CONCRETE

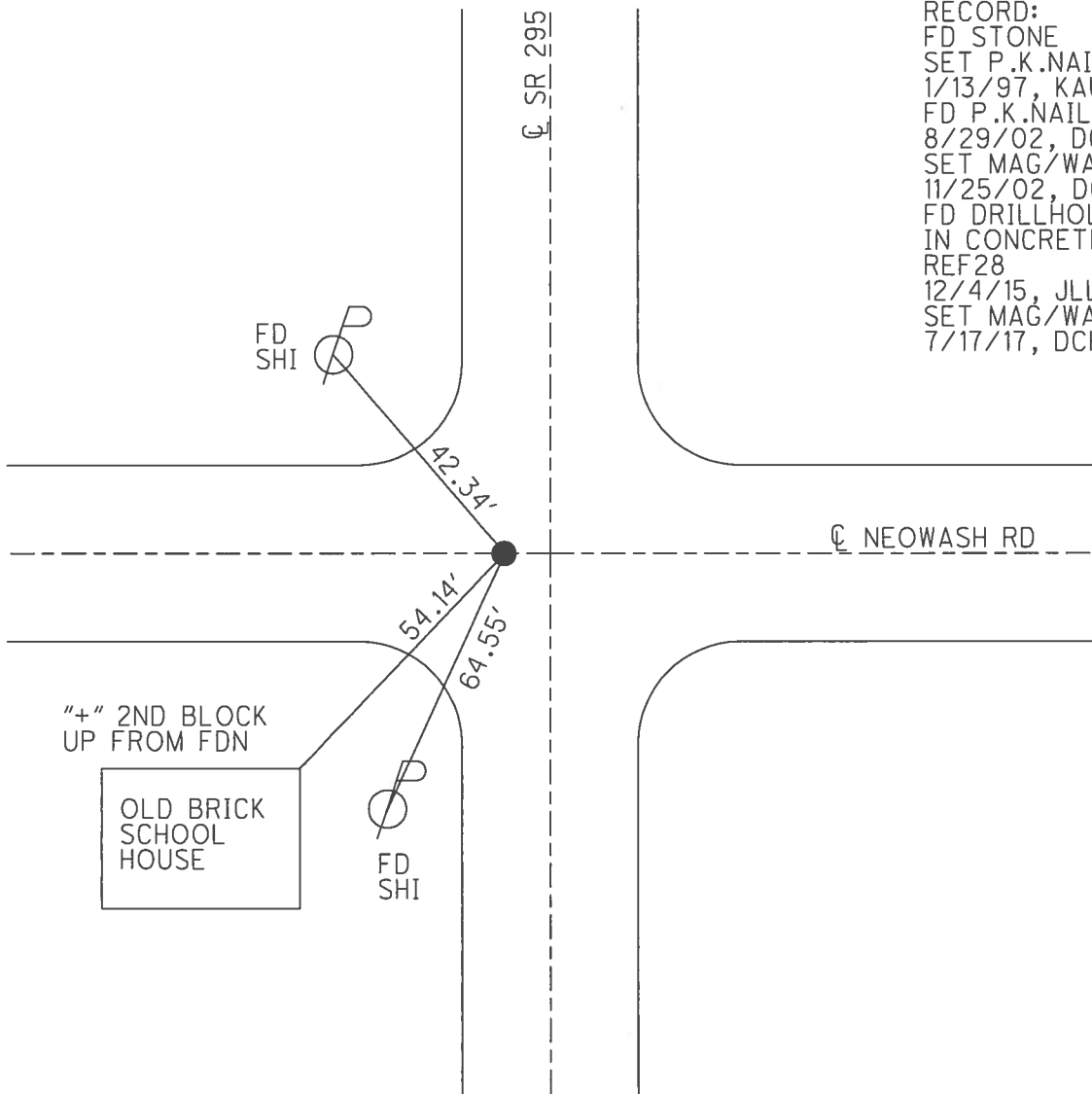
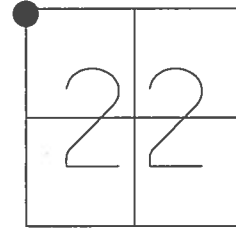
~~ON SURFACE~~ - BELOW 9"

LEFT - ☉ PAV'T - ~~RIGHT~~ 5'

6' TO LT EDGE PAVEMENT

S.L.M. 271+22.15

GRID: NORTHING: 661102.719 EASTING: 1605103.667



RECORD:  
 FD STONE  
 SET P.K.NAIL  
 1/13/97, KAUFMAN  
 FD P.K.NAIL  
 8/29/02, DCH  
 SET MAG/WASHER  
 11/25/02, DCH  
 FD DRILLHOLE  
 IN CONCRETE  
 REF28  
 12/4/15, JLL  
 SET MAG/WASHER  
 7/17/17, DCH

O.D.O.T. DISTRICT 2 SURVEY OFFICE

PERSONNEL

REFERENCE NO. 8

SHEET 8 OF 45

NOTES BEAUMONT

DATE 8-29-02

ROUTE S.R. 295

H.C. HOMAN

WEATHER CLOUDY

COUNTY LUCAS

R.C. BEAUMONT

TEMP. 78°

TOWNSHIP PROVIDENCE

SECTION 22

T 6 N R 9 E

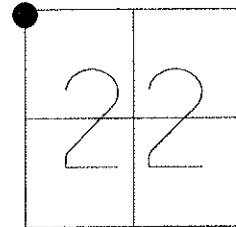
TYPE MONUMENT PK NAIL

ON SURFACE - ~~BELOW~~ ON

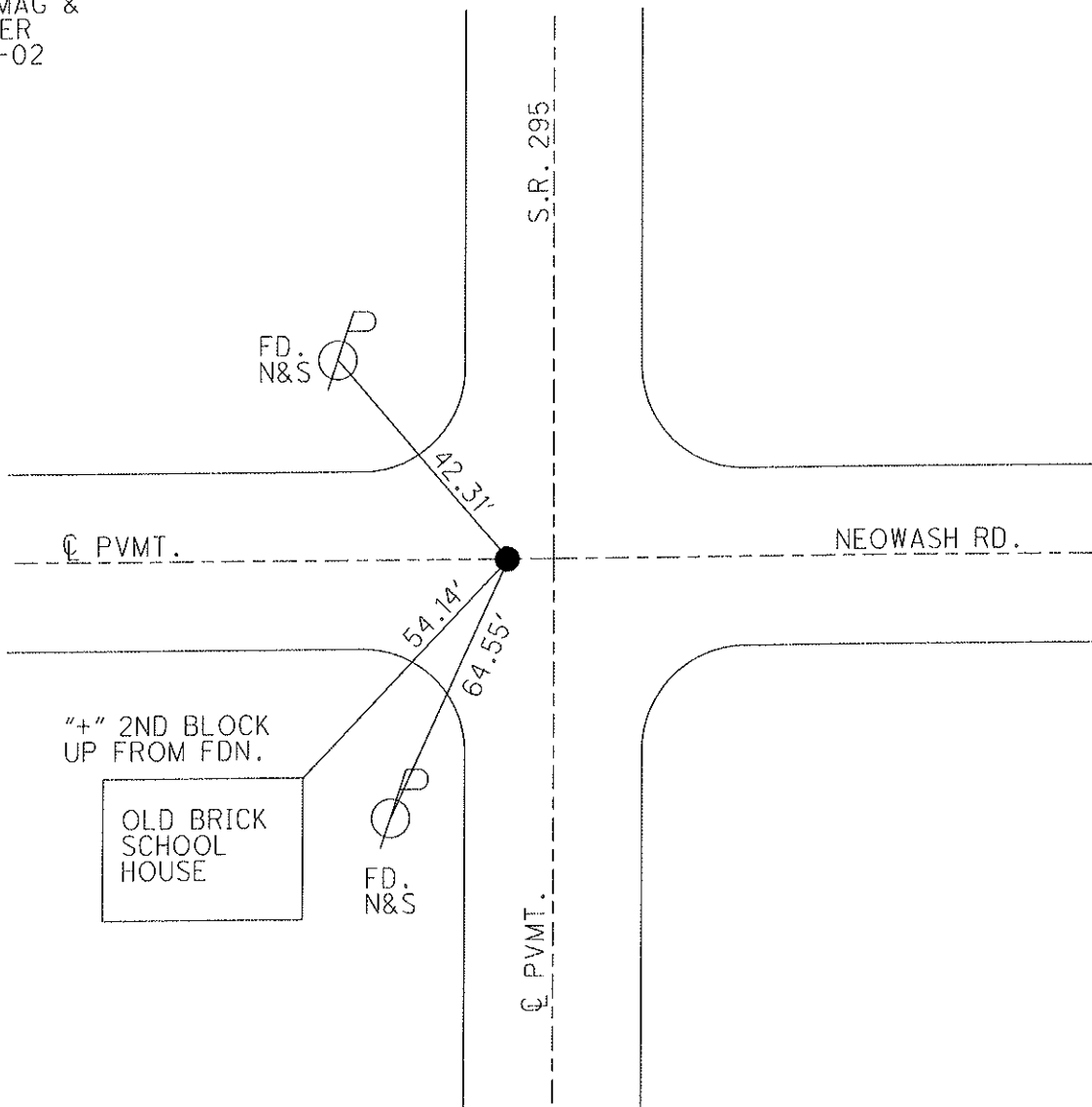
LEFT - Q PAV'T - ~~RIGHT~~ 5'

6' TO LT. EDGE PAVEMENT

S.L.M. 140+82



SET MAG &  
WASHER  
11-25-02  
DCH



# O.D.O.T. DISTRICT 2 SURVEY OFFICE

PERSONNEL \_\_\_\_\_

REFERENCE NO. 8

SHEET 6 OF 35

NOTES LOENRKE

H.C. STONE

R.C. CURTIS

DATE 8-16-91

WEATHER CLEAR

TEMP. +78

ROUTE S.R. 295

COUNTY LUCAS

TOWNSHIP PROVIDENCE

SECTION 22

T6 N R 9 E

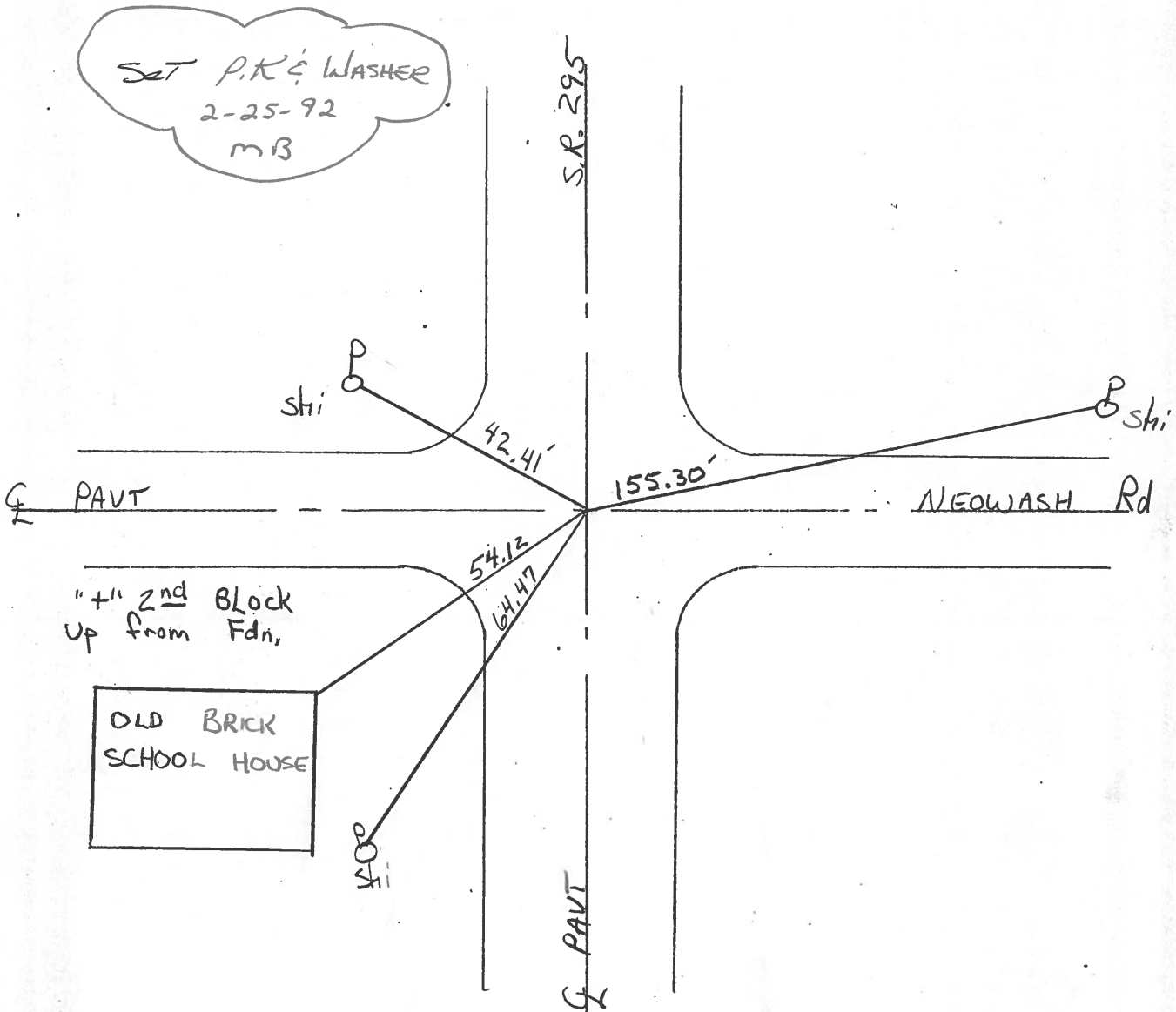
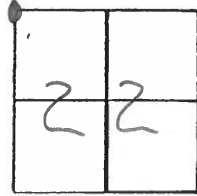
TYPE MONUMENT P.K. Nail.

ON SURFACE - ~~BEL~~ YES

LEFT-~~C~~ PAV'T. - RIGHT 5.0 Lt

TO EDGE PAVEMENT

S.L.M. 140+82



# O.D.O.T. DISTRICT 2 SURVEY OFFICE

PERSONNEL \_\_\_\_\_

REFERENCE NO. 8

SHEET 1 OF \_\_\_\_\_

NOTES 1. Stone

H.C. D. Curtis

R.C. J. Haushalter

DATE 31 May 89

WEATHER Cloudy

TEMP. 80°

ROUTE SR # 295

COUNTY Lucas

TOWNSHIP Providence

SECTION 15-16-21-22

T \_\_\_\_\_ R \_\_\_\_\_

TYPE MONUMENT PK Nail

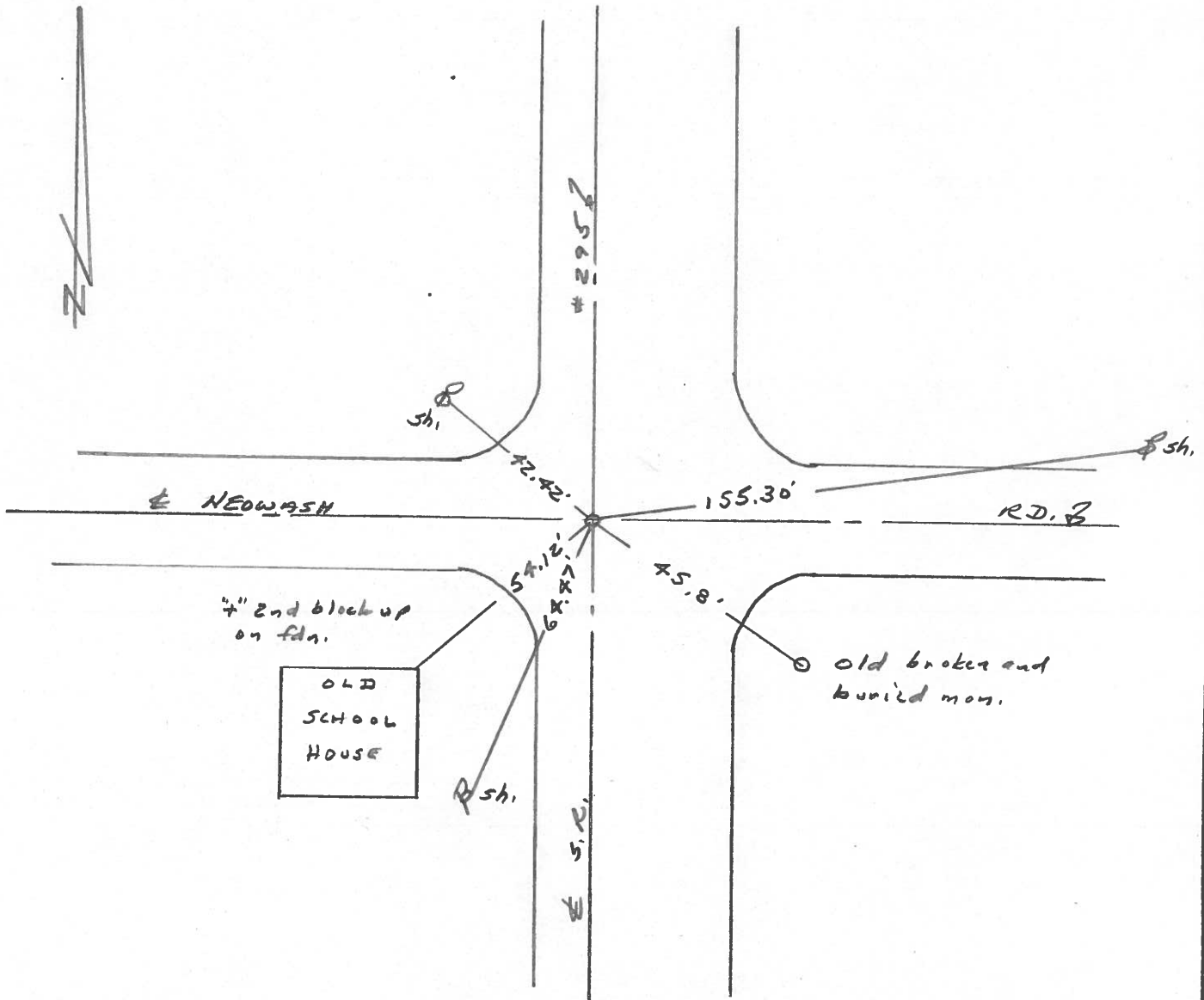
ON SURFACE - BELOW Surface

LEFT -  $\oplus$  PAV'T. - RIGHT \_\_\_\_\_

\_\_\_\_\_ TO \_\_\_\_\_ EDGE PAVEMENT

S.L.M. \_\_\_\_\_

16	15
21	22



O.D.O.T. DISTRICT 2 SURVEY OFFICE

SHEET 1 OF 2

County Lucas S.R. 295

Date 14 April 82

Township Providence

Weather Sunny

Section 15-16-21-22

Temp. 53°

T N, R E

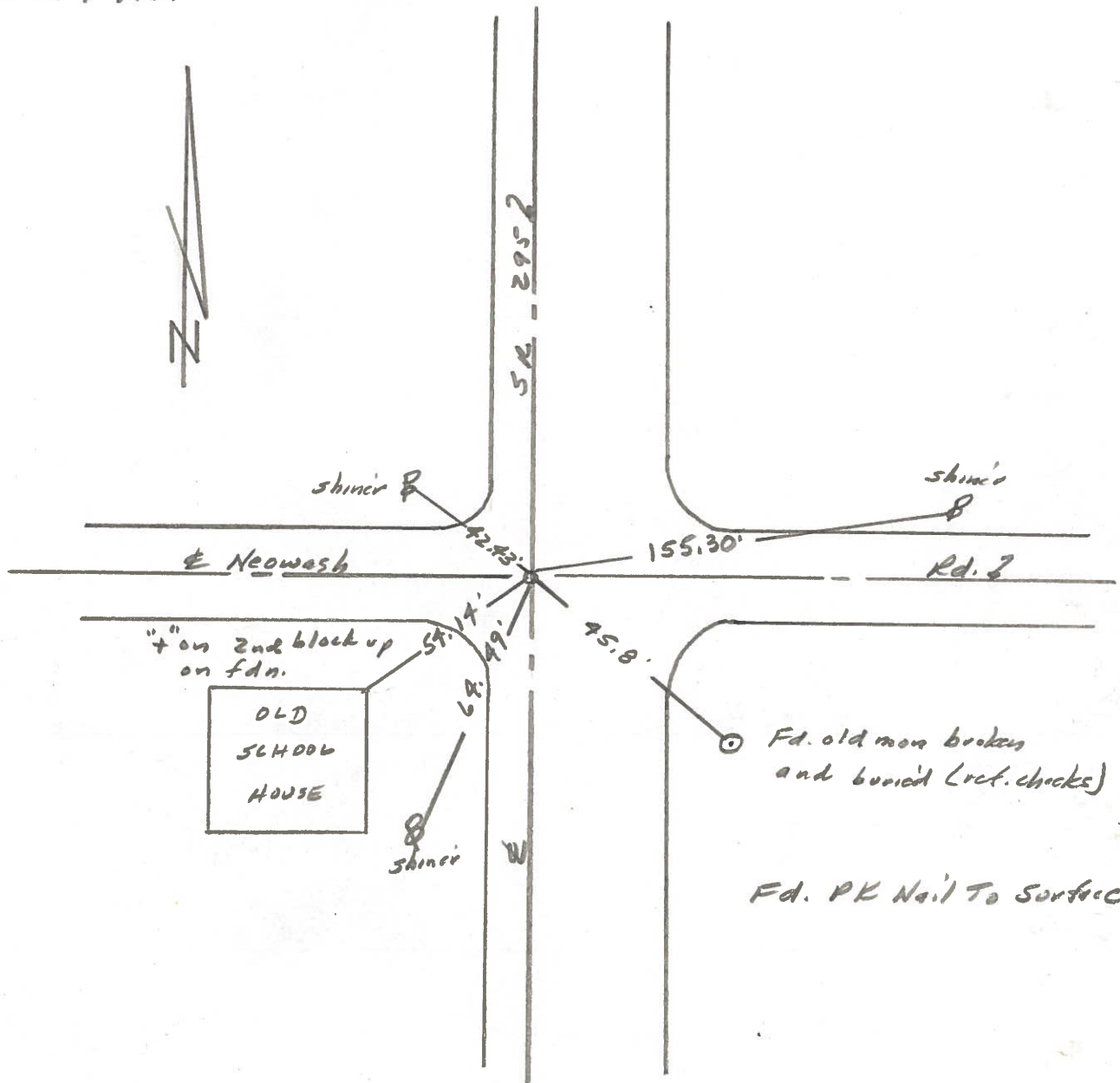
Personnel I. Stone

16	15
21	22

P. Neuser  
D. Curtis



REF. NO. 8



PERSONNEL	TITLE	PERSONNEL	TITLE
Stone	Notes		
Beck	Tape		
Hiehalok	Tape		

COUNTY	Lucas	DATE	6 June 68
S. R.	# 295	WEATHER	Hot
SEC.		TEMP.	87°

DESCRIPTION References to Control Points JOB NO. \_\_\_\_\_

