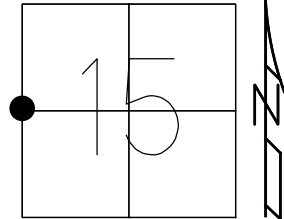


O.D.O.T. DISTRICT 2 SURVEY OFFICE (USE ONLY)

PERSONNEL _____ REFERENCE NO. 9 SHEET 9 OF 45
 NOTES AUBLE DATE 5-3-23 ROUTE SR 295
 H.C. NIESE WEATHER WINDY COUNTY LUCAS
 R.C. MILLER TEMP. 49° TOWNSHIP PROVIDENCE
 DWG BY ASTON PID CHIP SEAL SECTION 15
 T 6 N R 9 E

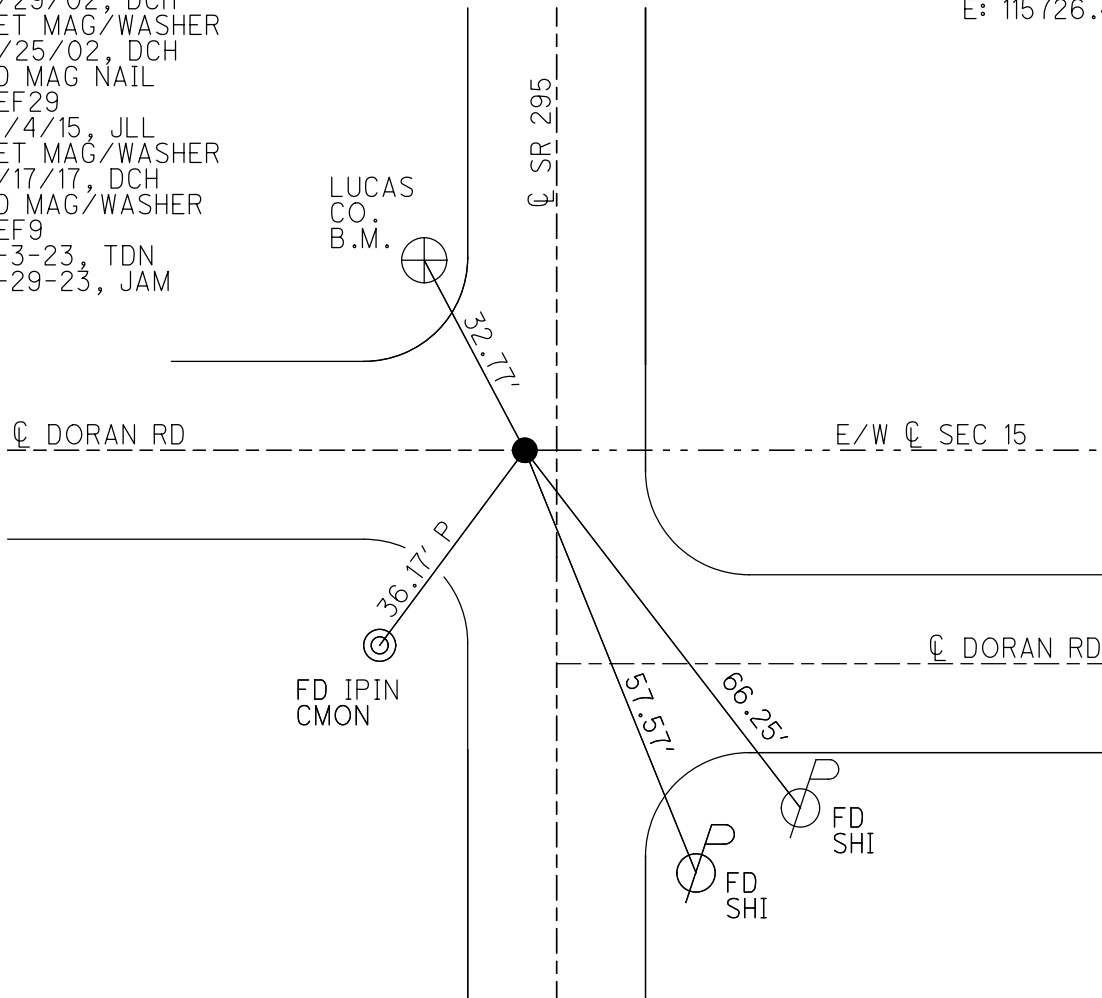
TYPE MONUMENT MAG/WASHER
 ON SURFACE - ~~BELOW~~ ON
 OFFSET ¢ PAVEMENT 4.5' LT : ~~RT~~
TO EDGE PAVEMENT
 STATION: 297+75.45



HORIZ.DATUM: NAD83(2011) GEOID: NAVD88 2018
 GRID: NORTHING: 663755.994 EASTING: 1605092.744

RECORD:
 FD P.K.NAIL
 8/29/02, DCH
 SET MAG/WASHER
 11/25/02, DCH
 FD MAG NAIL
 REF29
 12/4/15, JLL
 SET MAG/WASHER
 7/17/17, DCH
 FD MAG/WASHER
 REF9
 5-3-23, TDN
 9-29-23, JAM

LUCAS: LDP
 N: 284748.936
 E: 115726.419

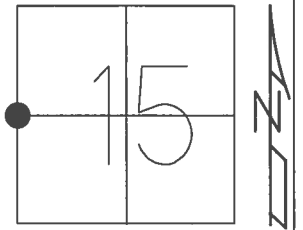


O.D.O.T. DISTRICT 2 SURVEY OFFICE (USE ONLY)

PERSONNEL _____ REFERENCE NO. 9 SHEET 9 OF 45

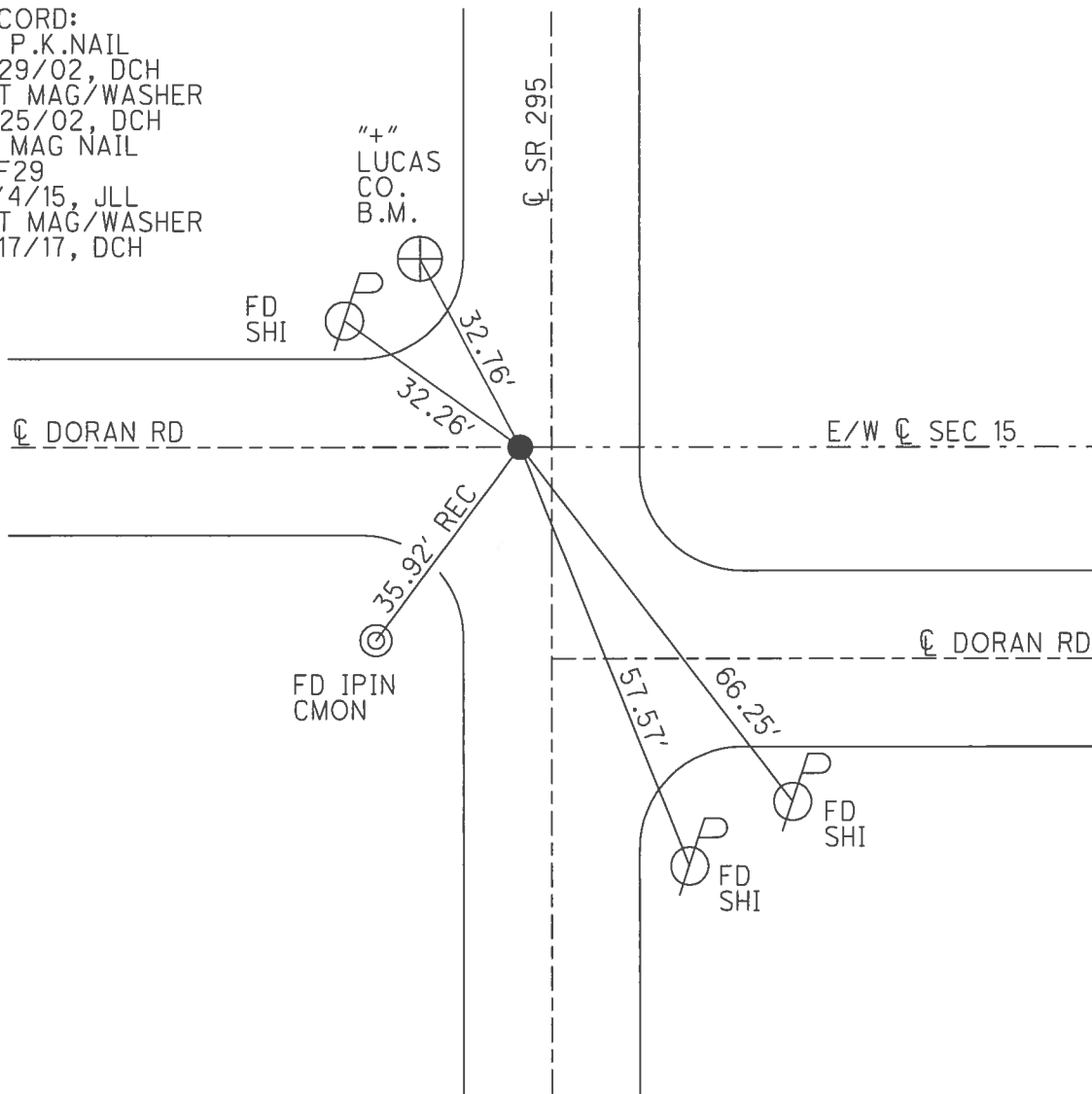
NOTES HOMAN DATE 3/17/17 ROUTE SR 295
 H.C. HOMAN WEATHER CLOUDY COUNTY LUCAS
 R.C. HELDMAN TEMP. 33° TOWNSHIP PROVIDENCE
 SECTION 15
T 6 N R 9 E

TYPE MONUMENT MAG NAIL
 ON SURFACE - ~~BELOW~~ ON
 LEFT - ☉ PAV'T - ~~RIGHT~~ 4.5'
TO EDGE PAVEMENT
 S.L.M. 297+75.45



GRID: NORTHING: 663755.994 EASTING: 1605092.744

RECORD:
 FD P.K.NAIL
 8/29/02, DCH
 SET MAG/WASHER
 11/25/02, DCH
 FD MAG NAIL
 REF29
 12/4/15, JLL
 SET MAG/WASHER
 7/17/17, DCH



O.D.O.T. DISTRICT 2 SURVEY OFFICE

PERSONNEL _____

REFERENCE NO. 9

SHEET 9 OF 45

NOTES BEAUMONT

DATE 8-29-02

ROUTE S.R. 295

H.C. HOMAN

WEATHER CLOUDY

COUNTY LUCAS

R.C. BEAUMONT

TEMP. 79°

TOWNSHIP PROVIDENCE

SECTION 15

T 6 N R 9 E

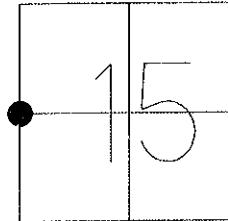
TYPE MONUMENT P.K NAIL

ON SURFACE - ~~BELOW~~ ON

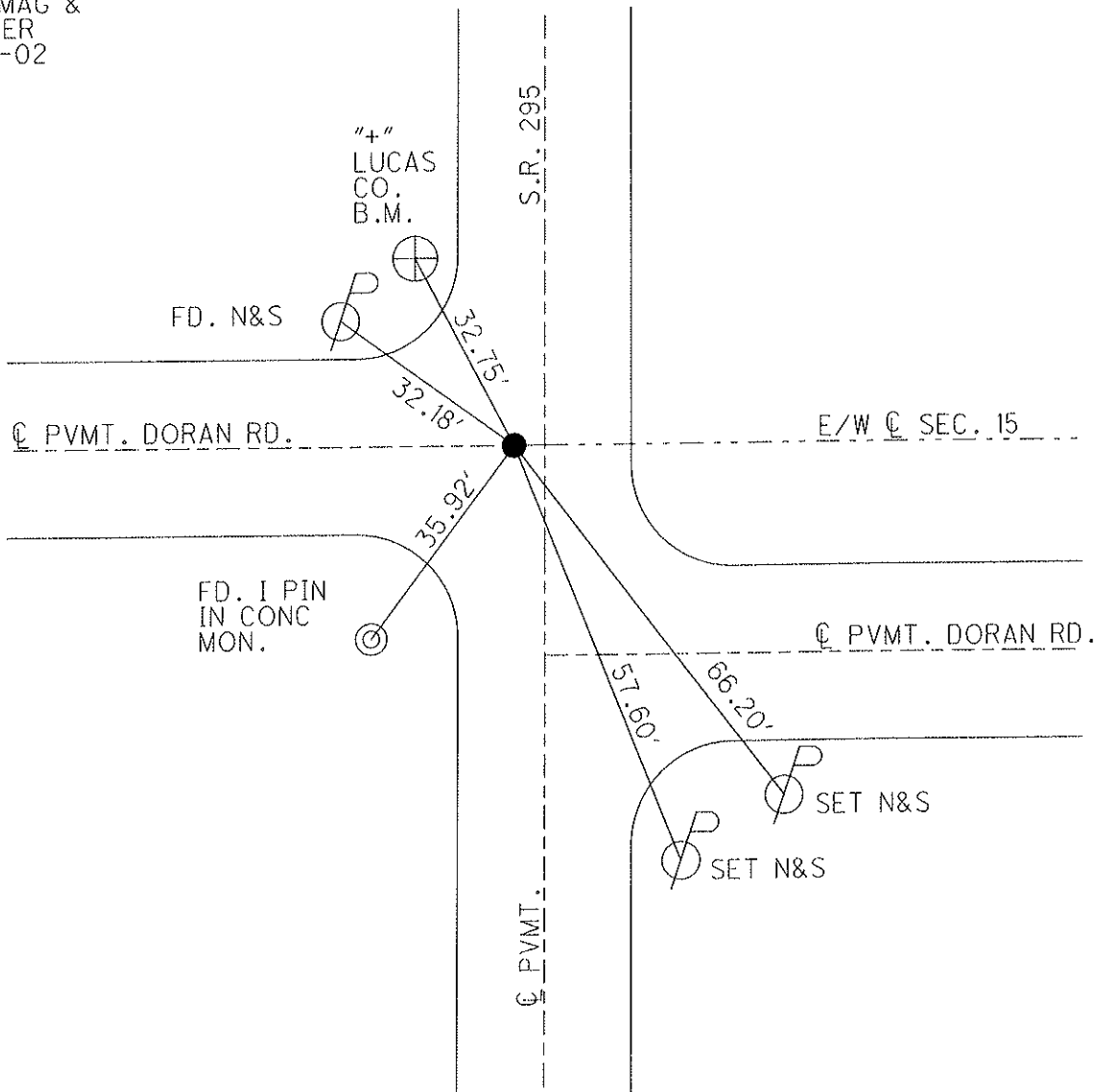
LEFT - Q PAV'T - ~~RIGHT~~ 4.5'

TO EDGE PAVEMENT

S.L.M. 167+38



SET MAG &
WASHER
11-25-02
DCH



O.D.O.T. DISTRICT 2 SURVEY OFFICE

PERSONNEL

REFERENCE NO. 9

SHEET 7 OF 35

NOTES LOHRKE

H.C. STONE

R.C. CURTIS

DATE 8-16-91

WEATHER CLEAR

TEMP. +80

ROUTE S.R. 295

COUNTY LUCAS

TOWNSHIP PROVIDENCE

SECTION 15

T6 N R 9 E

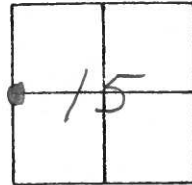
TYPE MONUMENT P.K. Nail

ON SURFACE - BELOW YES

LEFT - C PAV'T. - RIGHT

TO EDGE PAVEMENT

S.L.M. 167+38



SET P.K. & WASHER
2-25-92
m3

E/W PAVT. S.R. 295

"4" Lucas Co.
B.M.
Shi

E/W PAVT. DORAN Rd

E/W E/W Sec. 15

32.73'
32.07'
35.89'

I, PIN in
CONC. MON.

E/W PAVT. DORAN Rd

47.28'

Shi

"4" CONC. MON. (3' from guy wire)

O.D.O.T. DISTRICT 2 SURVEY OFFICE

PERSONNEL _____

REFERENCE NO. 9

SHEET 2 OF _____

NOTES 1. Stone

H.C. D. Curtis

R.G. J. Hirschfelder

DATE 31 May 89

WEATHER Cloudy

TEMP. 800

ROUTE SR # 295

COUNTY Lucas

TOWNSHIP Providence

SECTION 15

T. ___ R. ___

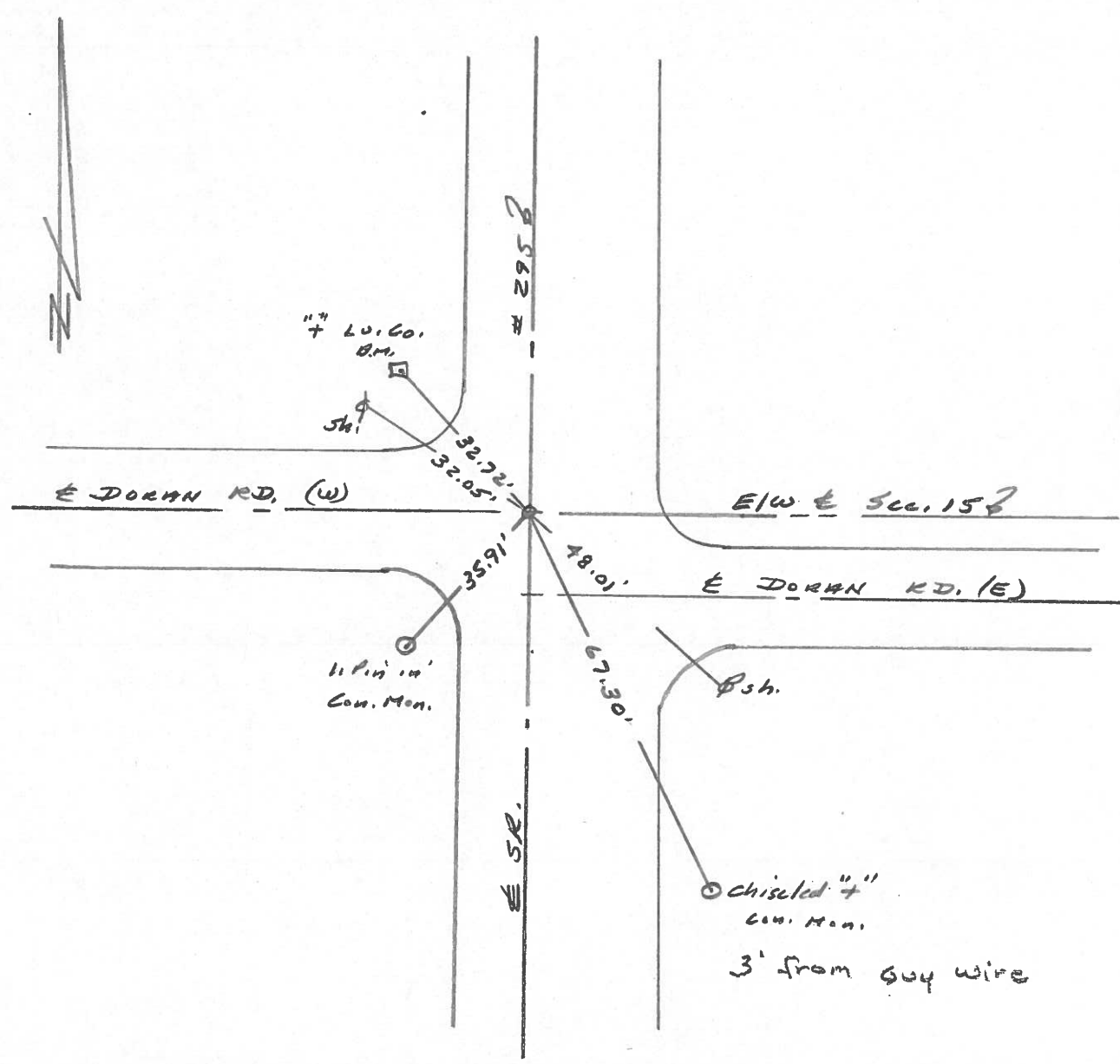
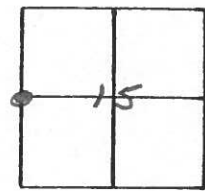
TYPE MONUMENT PK Nail

ON SURFACE - BELOW Surface

LEFT- & PAV'T. - RIGHT _____

TO _____ EDGE PAVEMENT

S.L.M. _____



County Lucas S.R. 295

Date 14 April 82

Township Providence

Weather Sunny

Section 15

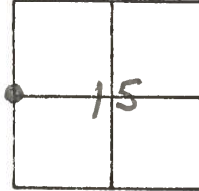
Temp. 53°

T.N, R.E

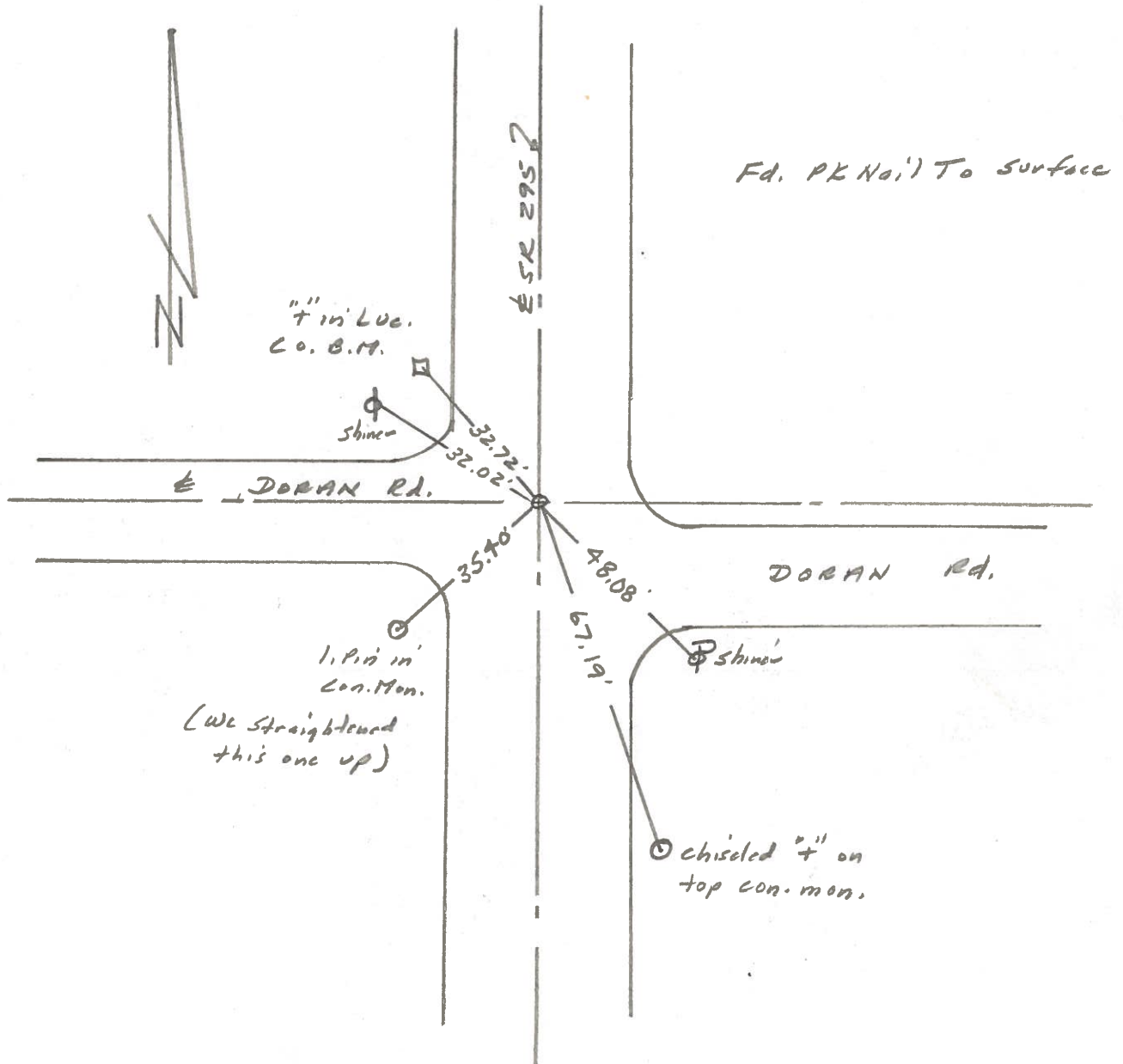
Personnel I. Stone

P. Neuse

D. Curtis



REF. NO. 9



PERSONNEL	TITLE	PERSONNEL	TITLE	COUNTY	DATE
Stone	Notes			Lucas	6 June 68
Beck	Tape			S. R. # 295	WEATHER Hot
Michalak	Tape			SEC.	TEMP. 88°

DESCRIPTION References to Control Points JOB NO. _____
 LEFT CENTER LINE RIGHT

