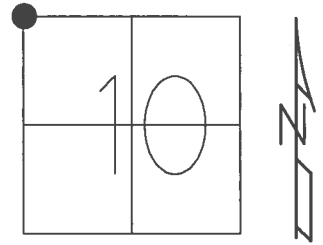


O.D.O.T. DISTRICT 2 SURVEY OFFICE (USE ONLY)

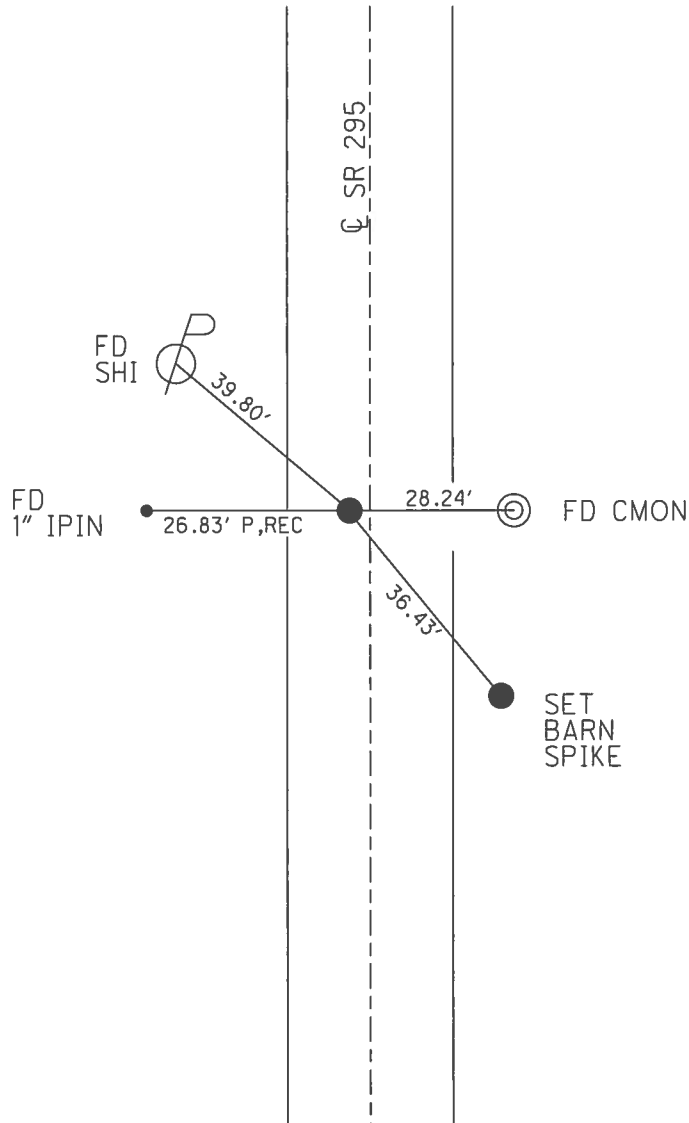
PERSONNEL	REFERENCE NO.	12	SHEET	12	OF	45
NOTES	HOMAN	DATE	3/22/17	ROUTE	SR 295	
H.C.	HOMAN	WEATHER	SUNNY	COUNTY	LUCAS	
R.C.	HELDMAN	TEMP.	22°	TOWNSHIP	WATERVILLE	
				SECTION	10	
				T	6	N
				R	9	E

TYPE MONUMENT MAG NAIL  
~~ON SURFACE~~ - BELOW ON  
 LEFT - ☉ PAV'T - ~~RIGHT~~ 3'  
8.5' TO LT EDGE PAVEMENT  
 S.L.M. 377+37.93



GRID: NORTHING: 671.718.339 EASTING: 1605049.399

RECORD:  
 FD P.K.NAIL  
 8/29/02, DCH  
 SET MAG/WASHER  
 11/21/02, DCH  
 FD MAG NAIL  
 REF32  
 12/4/15, JLL  
 SET MAG/WASHER  
 7/17/17, DCH



O.D.O.T. DISTRICT 2 SURVEY OFFICE

PERSONNEL

NOTES BEAUMONT  
H.C. HOMAN  
R.C. BEAUMONT

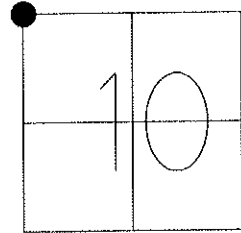
REFERENCE NO. 12

DATE 8-29-02  
WEATHER SUNNY  
TEMP. 80°

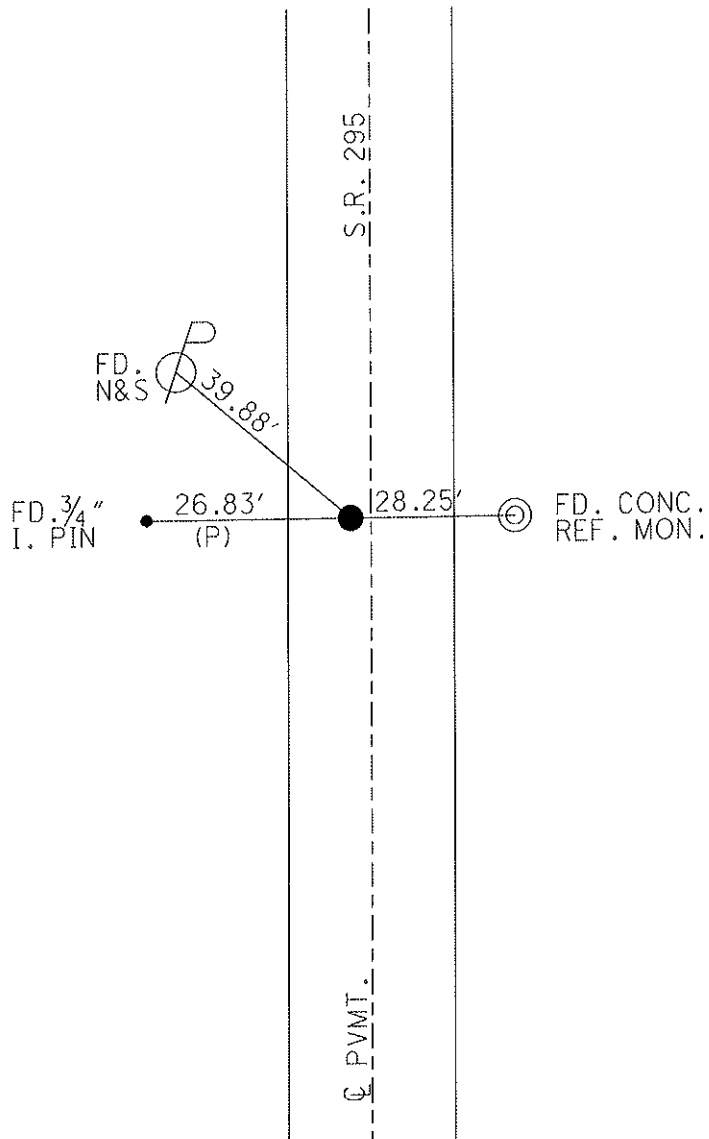
SHEET 12 OF 45

ROUTE S.R. 295  
COUNTY LUCAS  
TOWNSHIP WATERVILLE  
SECTION 10  
T 6 N R 9 E

TYPE MONUMENT P.K. NAIL  
~~ON SURFACE - BELOW~~ 4"  
~~LEFT - C PAV'T - RIGHT~~ 3'  
8.5' TO LT EDGE PAVEMENT  
S.L.M. 247+02



SET MAG &  
WASHER  
11-21-02  
DCH



O.D.O.T. DISTRICT 2 SURVEY OFFICE

PERSONNEL

REFERENCE NO. 12

SHEET 10 OF 35

NOTES LOEHRKE

H.C. STONE

R.C. CURTIS

DATE 8-17-91

WEATHER CLEAR

TEMP. 480

ROUTE S.R. 295

COUNTY LUCAS

TOWNSHIP WATERVILLE

SECTION 10

T6 N R 9 E

TYPE MONUMENT P.K. Nail

Set P.K. WASHER

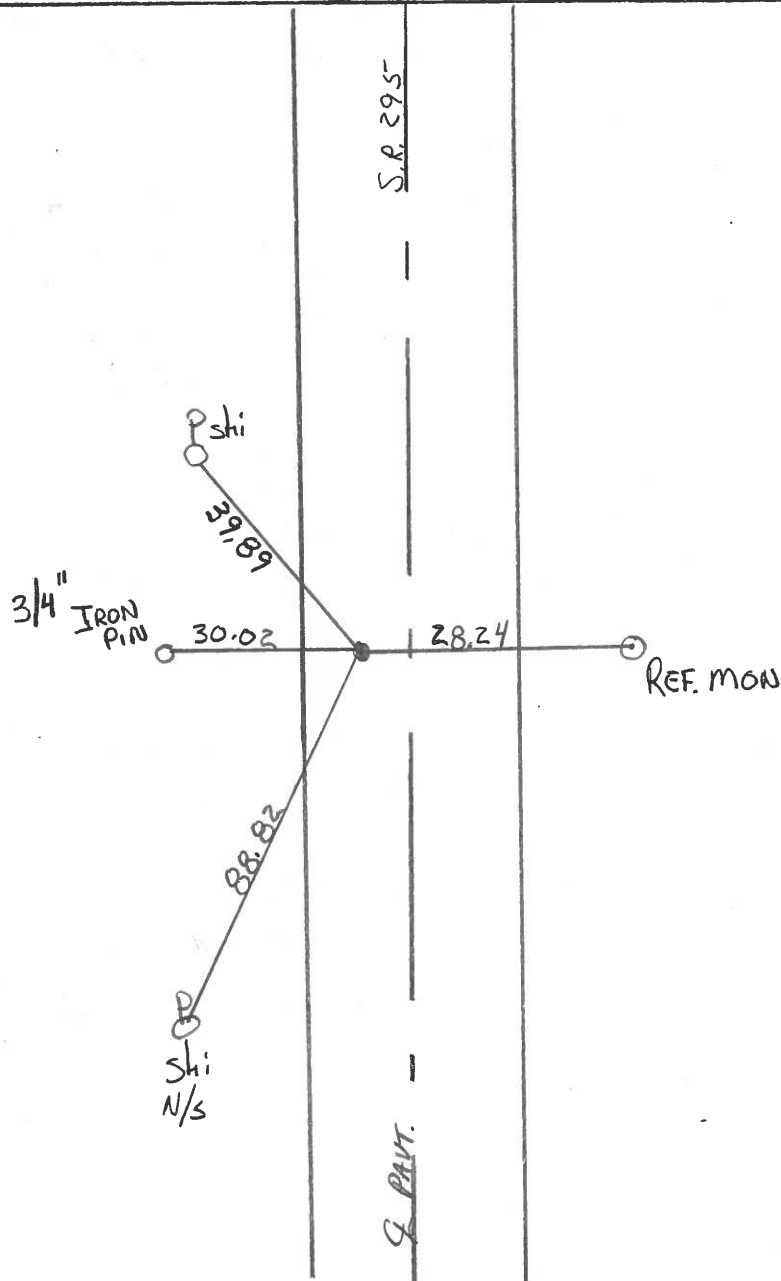
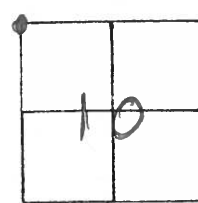
ON SURFACE - BELOW YES

3-24-92

LEFT- & PAV'T. - RIGHT

TO EDGE PAVEMENT

S.L.M. 247 to 2



O.D.O.T. DISTRICT 2 SURVEY OFFICE

SHEET \_\_\_\_\_ OF \_\_\_\_\_

County Lucas S.R. 295

Date 23 April 82

Township Wauville

Weather Sunny

Section 3-4-9-10

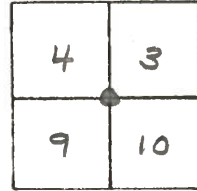
Temp. 58°

T N, R E

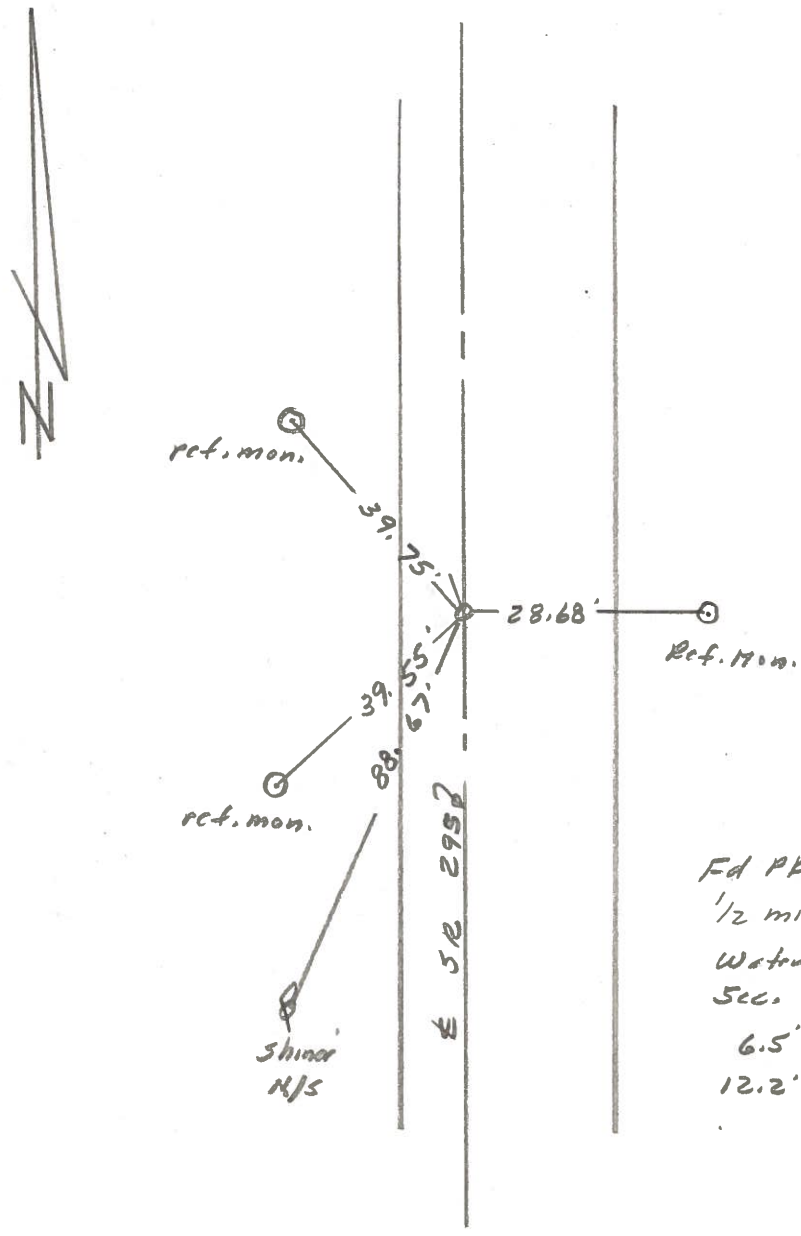
Personnel 1. Stone

R. Michalak

D. Curtis



REF NO, 12



Fd PK Nail To Surface  
 1/2 mile North of Neapolis-  
 Wauville Rd.  
 Sec. Cor. 3-4-9-10  
 6.5' to W. edge put,  
 12.2' to E. edge put.

PERSONNEL	TITLE	PERSONNEL	TITLE	COUNTY	DATE
Stane	Notes			Locas	7 June 68
Beck	Tape			S. R. # 295	WEATHER Warm
Michalak	Tape			SEC.	TEMP. 81°

DESCRIPTION References to Control Points JOB NO.

