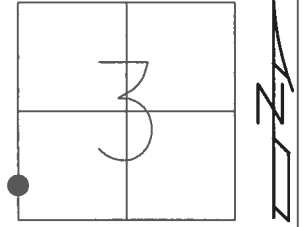


O.D.O.T. DISTRICT 2 SURVEY OFFICE (USE ONLY)

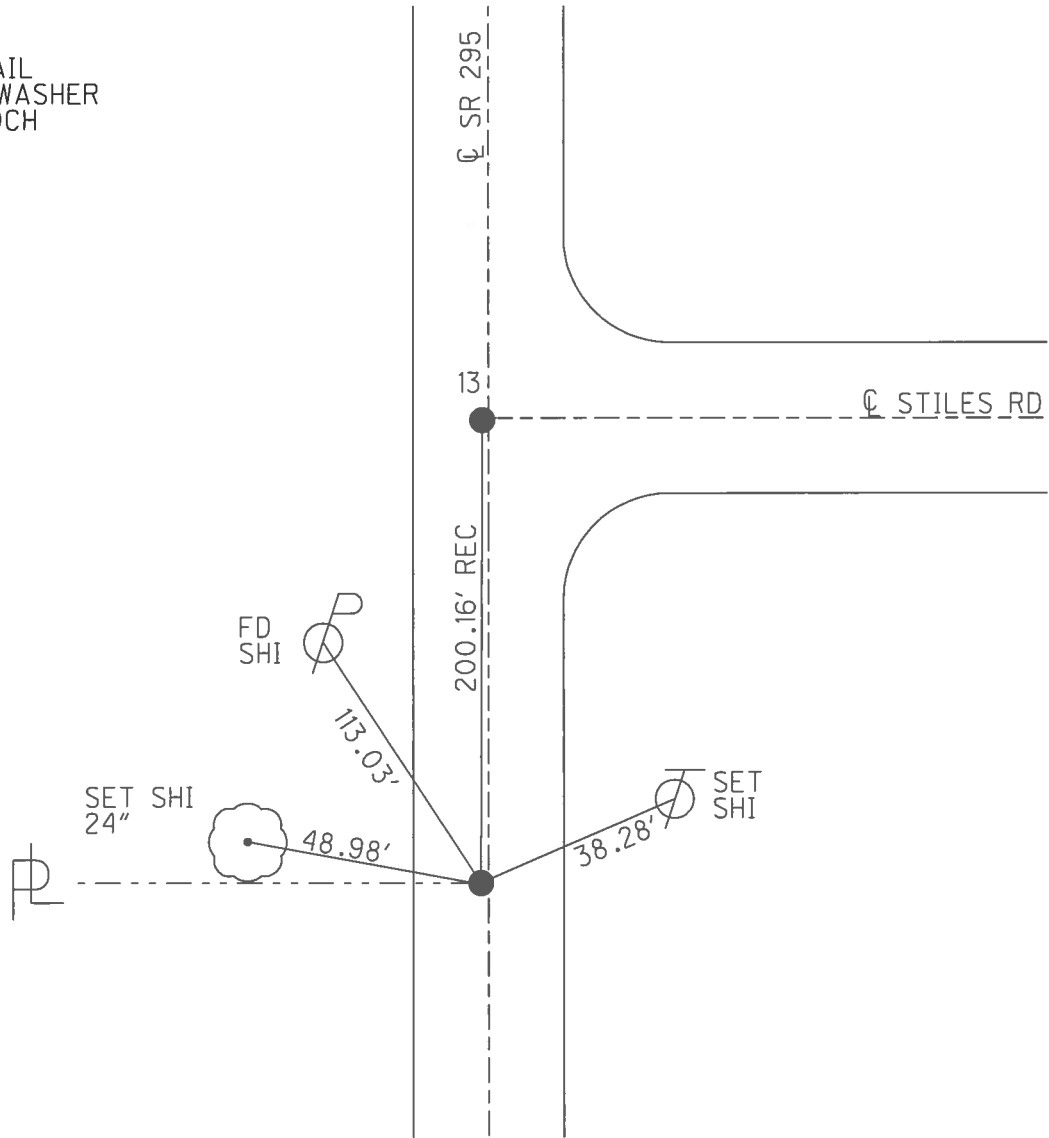
PERSONNEL \_\_\_\_\_ REFERENCE NO. 12 A SHEET 13 OF 45  
 NOTES HOMAN DATE 3/22/17 ROUTE SR 295  
 H.C. HOMAN WEATHER SUNNY COUNTY LUCAS  
 R.C. HELDMAN TEMP. 23° TOWNSHIP WATERVILLE  
 \_\_\_\_\_ SECTION 3  
 \_\_\_\_\_ T 6 N R 9 E

TYPE MONUMENT MAG NAIL  
 ON SURFACE - ~~BELOW~~ \_\_\_\_\_ ON \_\_\_\_\_  
 LEFT - ☉ PAV'T - ~~RIGHT~~ \_\_\_\_\_ 1'  
10.5' TO LT \_\_\_\_\_ EDGE PAVEMENT  
 S.L.M. 388+63.54



GRID: NORTHING: \_\_\_\_\_ EASTING: \_\_\_\_\_

RECORD:  
 FD MAG NAIL  
 SET MAG/WASHER  
 7/17/17, DCH



O.D.O.T. DISTRICT 2 SURVEY OFFICE

PERSONNEL

REFERENCE NO. 12 A

SHEET 13 OF 45

NOTES BEAUMONT

DATE 9-3-02

ROUTE S.R. 295

H.C. HOMAN

WEATHER P. CLOUDY

COUNTY LUCAS

R.C. BEAUMONT

TEMP. 80°

TOWNSHIP WATERVILLE

SECTION 3

T 6 N R 9 E

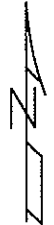
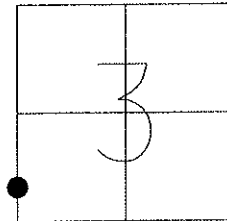
TYPE MONUMENT P.K. NAIL

ON SURFACE - ~~BELOW~~ ON

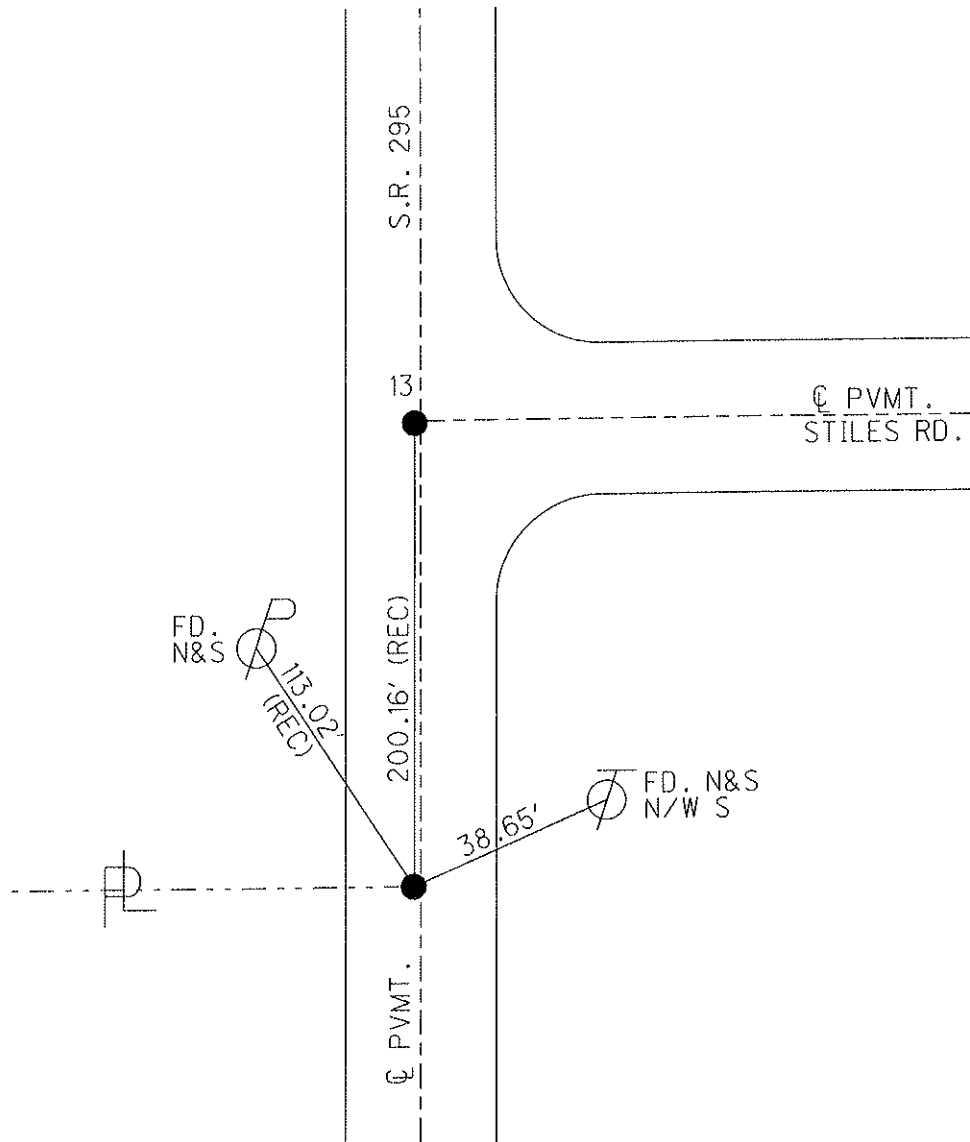
LEFT - Q PAV'T - ~~RIGHT~~ 1'

10.5 TO LT. EDGE PAVEMENT

S.L.M. 258+27



SET MAGS &  
WASHERS  
11-21-02  
DCH



O.D.O.T. DISTRICT 2 SURVEY OFFICE

13/14

PERSONNEL

REFERENCE NO. 12A&13

SHEET 12 OF 40

NOTES BEAUMONT

DATE 9-3-02

ROUTE S.R. 295

H.C. HOMAN

WEATHER P. CLOUDY

COUNTY LUCAS

R.C. BEAUMONT

TEMP. 80°

TOWNSHIP WATERVILLE

SECTION 3

T 6 N R 9 E

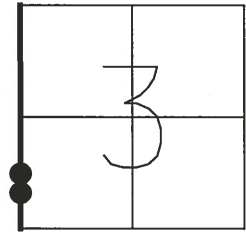
TYPE MONUMENT P.K. NAILS

ON SURFACE - ~~BELGIAN~~ BOTH

LEFT - CL PAV'T - RIGHT 1.0' LT

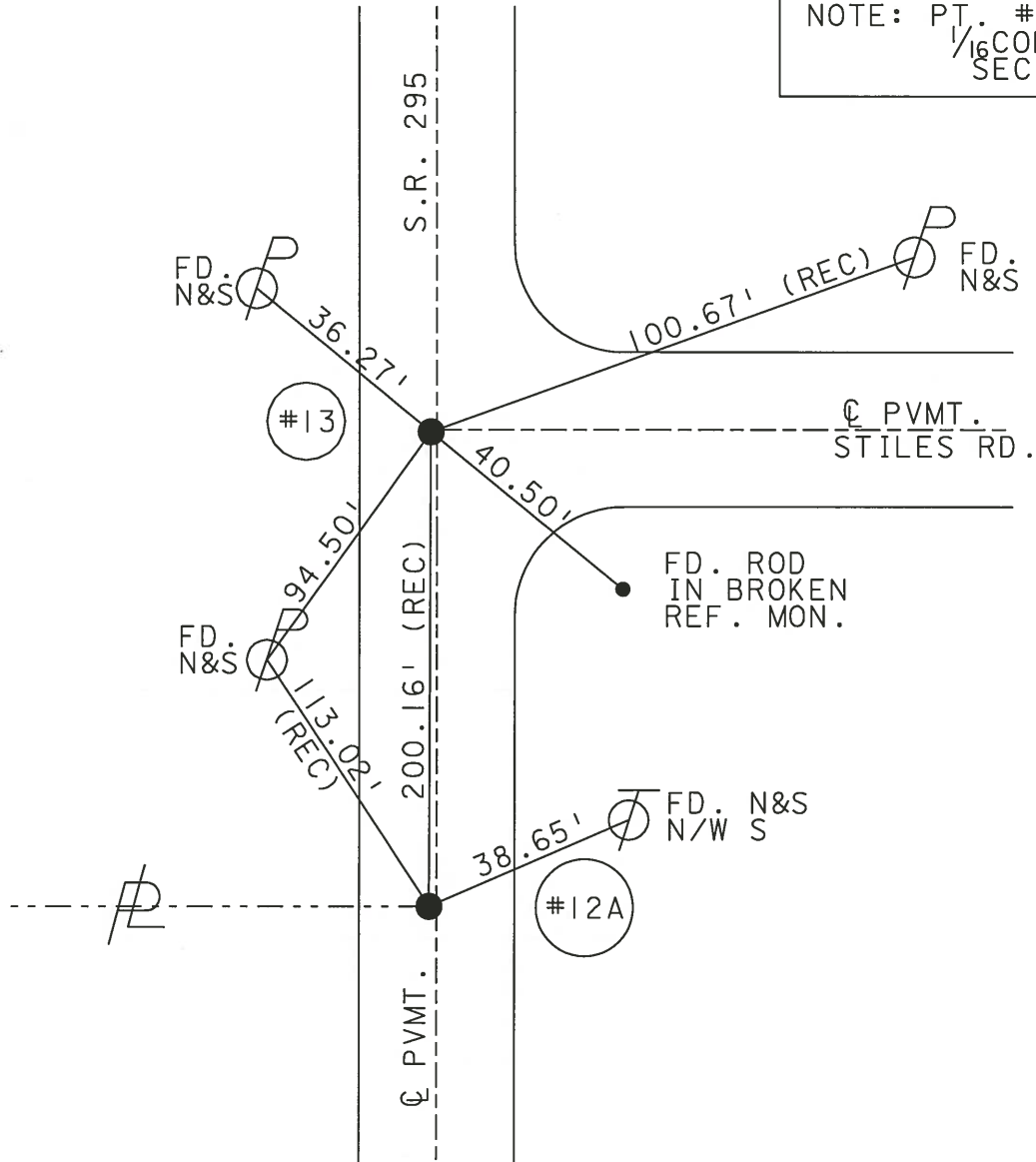
10.5 TO LT. EDGE PAVEMENT

S.L.M. 258+27 260+27



NOTE: PT. # 13 =  
1/16 CORNER  
SEC 3-4

SET MAGS &  
WASHERS  
11-21-02  
DCH



# O.D.O.T. DISTRICT 2 SURVEY OFFICE

PERSONNEL

REFERENCE NO. 12A & 13

SHEET 11 OF 35

NOTES LOEHRKE

H.C. STONE

R.C. CURTIS

DATE 8-17-91

WEATHER CLEAR

TEMP. +80

ROUTE S.R. 295

COUNTY LUCAS

TOWNSHIP WATERVILLE

SECTION 3

T 6 N R 9 E

TYPE MONUMENT P.K. Nails

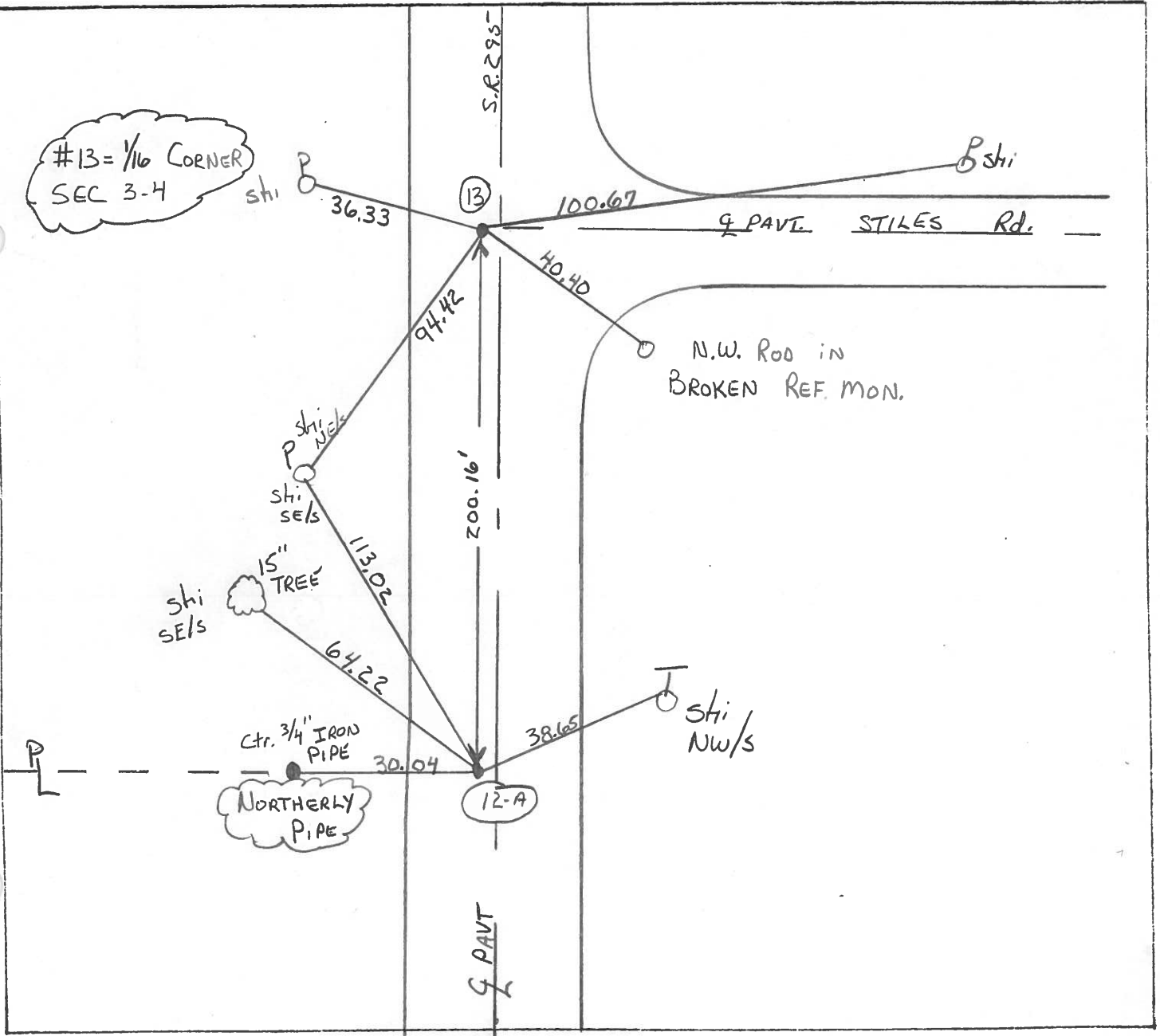
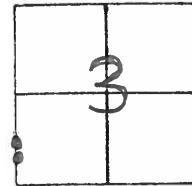
Set P.K. / WASHER  
3-24-92

ON SURFACE - BELOW YES

LEFT- & PAV'T. - RIGHT 1.0' - 1.2'

TO EDGE PAVEMENT

S.L.M. 250+27 260+27



O.D.O.T. DISTRICT 2 SURVEY OFFICE

SHEET \_\_\_\_\_ OF \_\_\_\_\_

County Lucas S.R. 295

Date 23 April 82

Township Watcaville

Weather Sunny

Section 3

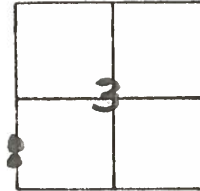
Temp. 57°

T N, R E

Personnel I. Stone

R. Michalak

D. Curtis



REF. NOS. 12A & 13

Ed. PK Nail to Surface  
8.5' to W. edge put.  
Ref. No. 13  
1/16 cor sec. 3-4  
shiner SW/5



Shiner in SE/5  
36.44'

100.52' E Stiles Rd. 2

99.98'  
40.36'

NW iron rod in  
broken ref. mon.

Shiner NE/5

176.30'

Shiner SE/5  
15" Tree

200.22'  
E SR 295

Shiner NW/5

P/L  
ctr. 3/4" I. Pipe  
30.05'

64.22'  
38.65'

Ed. RR Spk. To Surface  
10.2' to E. edge put.  
8.2' to W. edge put.  
Ref. No. 12A