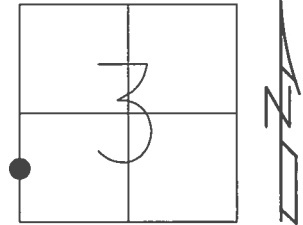


O.D.O.T. DISTRICT 2 SURVEY OFFICE (USE ONLY)

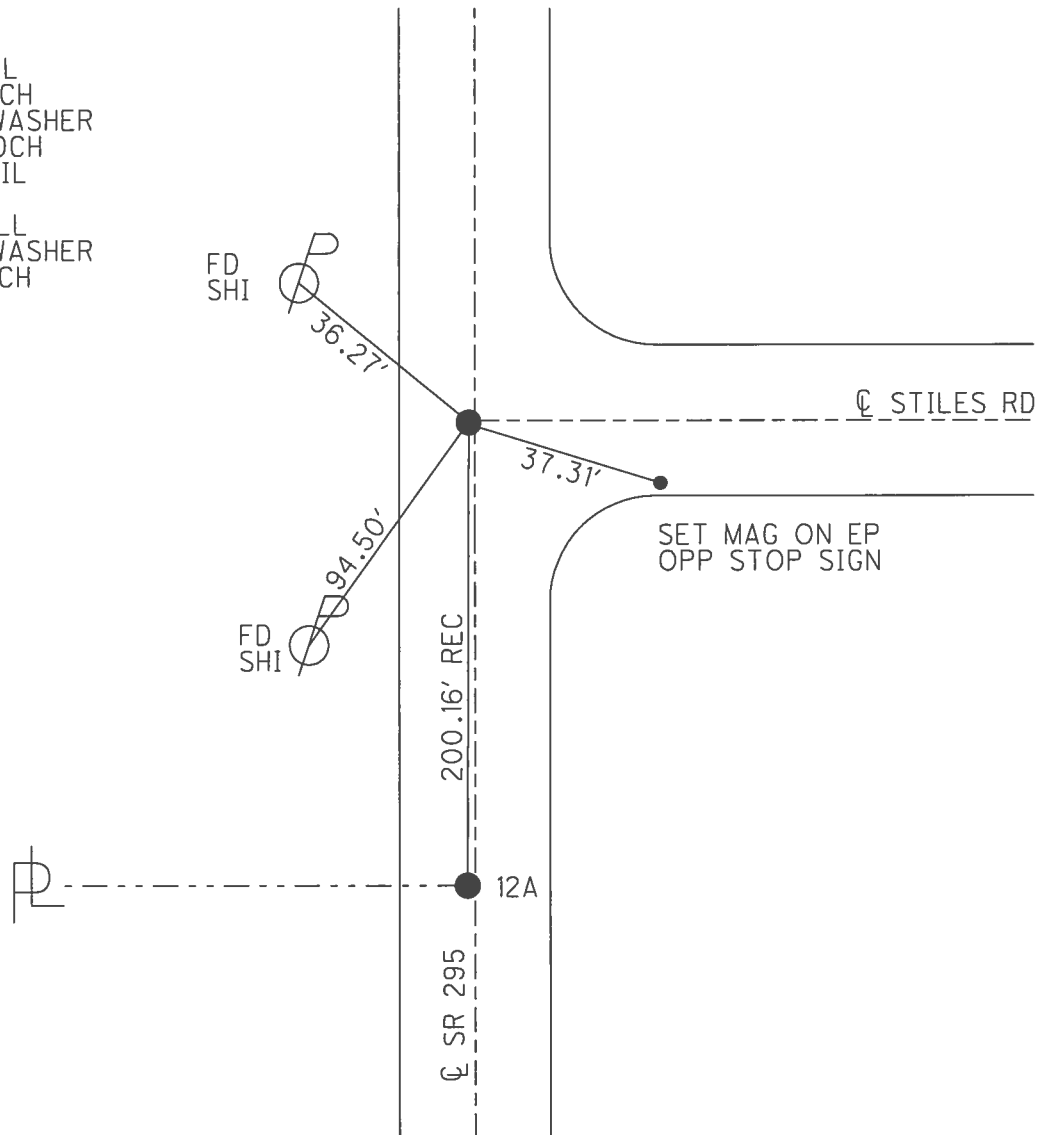
PERSONNEL \_\_\_\_\_ REFERENCE NO. 13 SHEET 14 OF 45  
 NOTES HOMAN DATE 3/22/17 ROUTE SR 295  
 H.C. HOMAN WEATHER SUNNY COUNTY LUCAS  
 R.C. HELDMAN TEMP. 23° TOWNSHIP WATERVILLE  
 \_\_\_\_\_ SECTION 3  
 \_\_\_\_\_ T 6 N R 9 E

TYPE MONUMENT MAG NAIL  
 ON SURFACE - ~~BELOW~~ \_\_\_\_\_ ON \_\_\_\_\_  
 LEFT - ☉ PAV'T - ~~RIGHT~~ \_\_\_\_\_ 1'  
10.5' TO LT \_\_\_\_\_ EDGE PAVEMENT  
 S.L.M. 390+63.7



GRID: NORTHING: 673044.081 EASTING: 1605040.143

RECORD:  
 FD P.K.NAIL  
 9/3/02, DCH  
 SET MAG/WASHER  
 11/21/02, DCH  
 FD MAG NAIL  
 REF33  
 12/4/15, JLL  
 SET MAG/WASHER  
 7/17/17, DCH



O.D.O.T. DISTRICT 2 SURVEY OFFICE

PERSONNEL \_\_\_\_\_

REFERENCE NO. 13

SHEET 14 OF 45

NOTES BEAUMONT

DATE 9-3-02

ROUTE S.R. 295

H.C. HOMAN

WEATHER P. CLOUDY

COUNTY LUCAS

R.C. BEAUMONT

TEMP. 80°

TOWNSHIP WATERVILLE

SECTION 3

T 6 N R 9 E

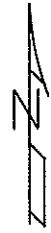
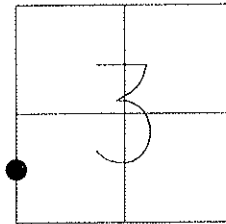
TYPE MONUMENT P.K. NAILS

ON SURFACE - ~~BELOW~~ ON \_\_\_\_\_

LEFT - Q PAV'T - ~~RIGHT~~ 1'

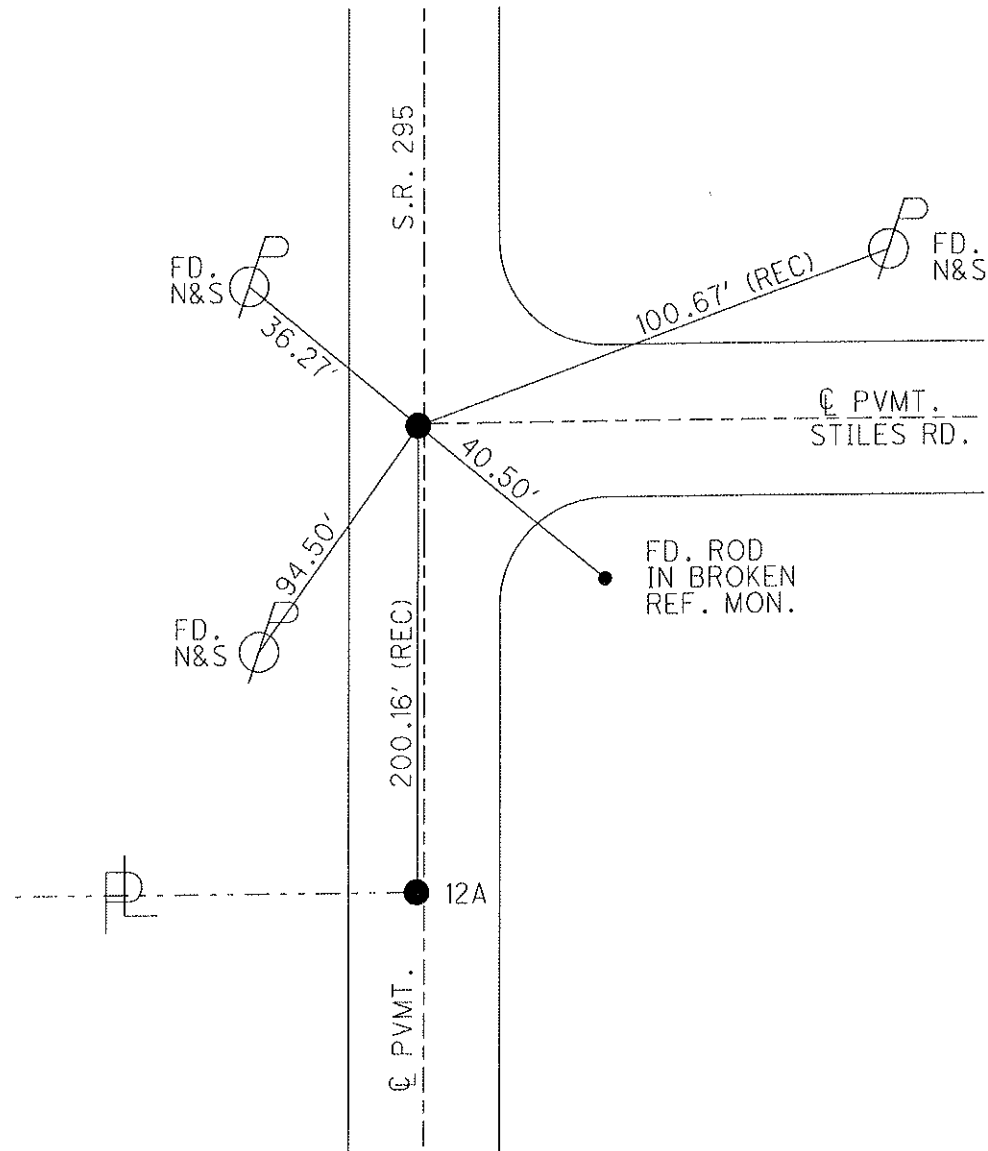
10.5 TO LT. EDGE PAVEMENT

S.L.M. 260+27



NOTE:  
1/8" CORNER  
OF SEC 3,4

SET MAGS &  
WASHERS  
11-21-02  
DCH



O.D.O.T. DISTRICT 2 SURVEY OFFICE

13/14

PERSONNEL

REFERENCE NO. <sup>12A&</sup> 13

SHEET 12 OF 40

NOTES BEAUMONT

DATE 9-3-02

ROUTE S.R. 295

H.C. HOMAN

WEATHER P. CLOUDY

COUNTY LUCAS

R.C. BEAUMONT

TEMP. 80°

TOWNSHIP WATERVILLE

SECTION 3

T 6 N R 9 E

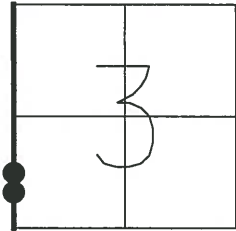
TYPE MONUMENT P.K. NAILS

ON SURFACE - ~~BELG~~ BOTH

LEFT -  $\frac{1}{2}$  PAV'T - RIGHT 1.0' LT

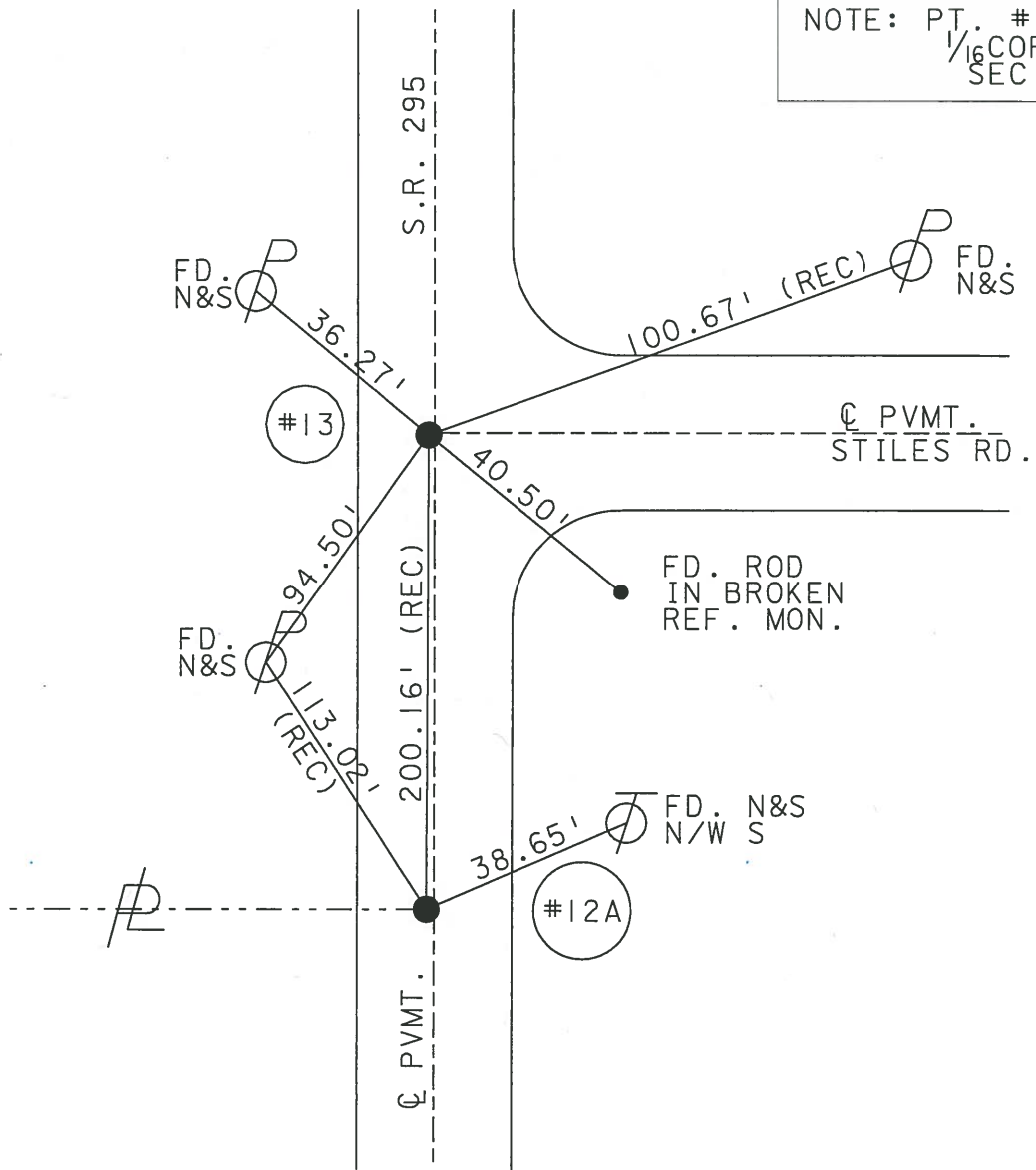
10.5 TO LT. EDGE PAVEMENT

S.L.M. 258+27 260+27



SET MAGS &  
WASHERS  
11-21-02  
DCH

NOTE: PT. # 13 =  
 $\frac{1}{16}$  CORNER  
SEC 3-4



# O.D.O.T. DISTRICT 2 SURVEY OFFICE

PERSONNEL

REFERENCE NO. 12A & 13

SHEET 11 OF 35

NOTES LOHRKE

H.C. STONE

R.C. CURTIS

DATE 8-17-91

WEATHER CLEAR

TEMP. +80

ROUTE S.R. 295

COUNTY LUCAS

TOWNSHIP WATERVILLE

SECTION 3

T6 N R 9 E

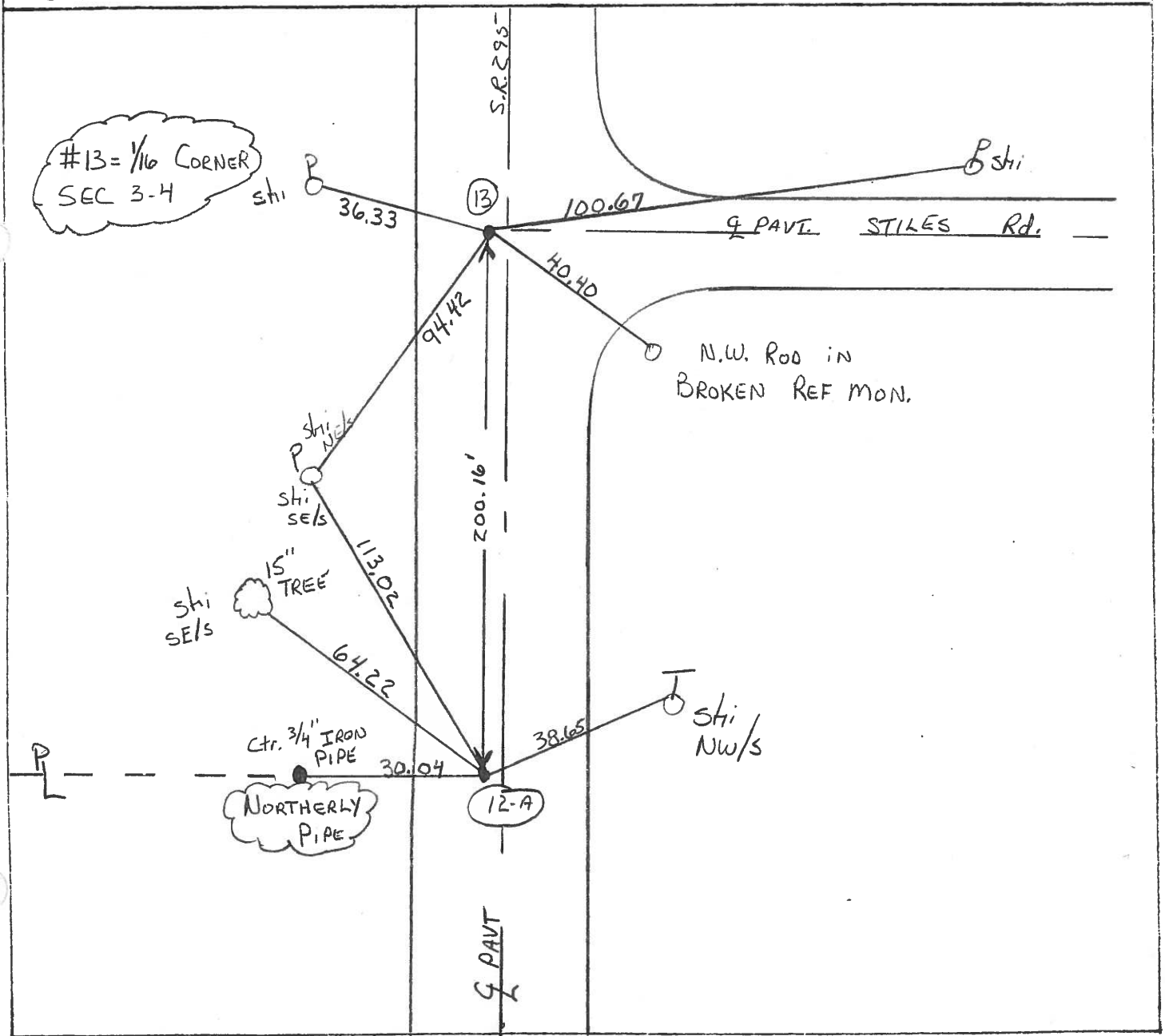
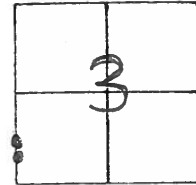
TYPE MONUMENT P.K. Nails Set P.K. / WASHER

ON SURFACE - BELOW YES 3-24-92

LEFT - ☉ PAV'T. - RIGHT 1.0' - 1.2'

TO EDGE PAVEMENT

S.L.M. 250+27 260+27





PERSONNEL	TITLE	PERSONNEL	TITLE
Stone	Notes		
Beck	Tape		
Mihalak	Tape		

COUNTY Lucas DATE 7 June 68

S. R. # 295 WEATHER Hot

SEC. \_\_\_\_\_ TEMP. 85°

DESCRIPTION References to Control Points JOB NO. \_\_\_\_\_

LEFT CENTER LINE RIGHT

