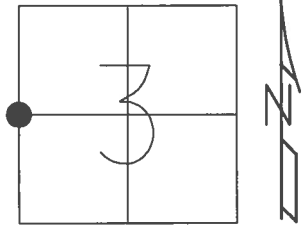


O.D.O.T. DISTRICT 2 SURVEY OFFICE (USE ONLY)

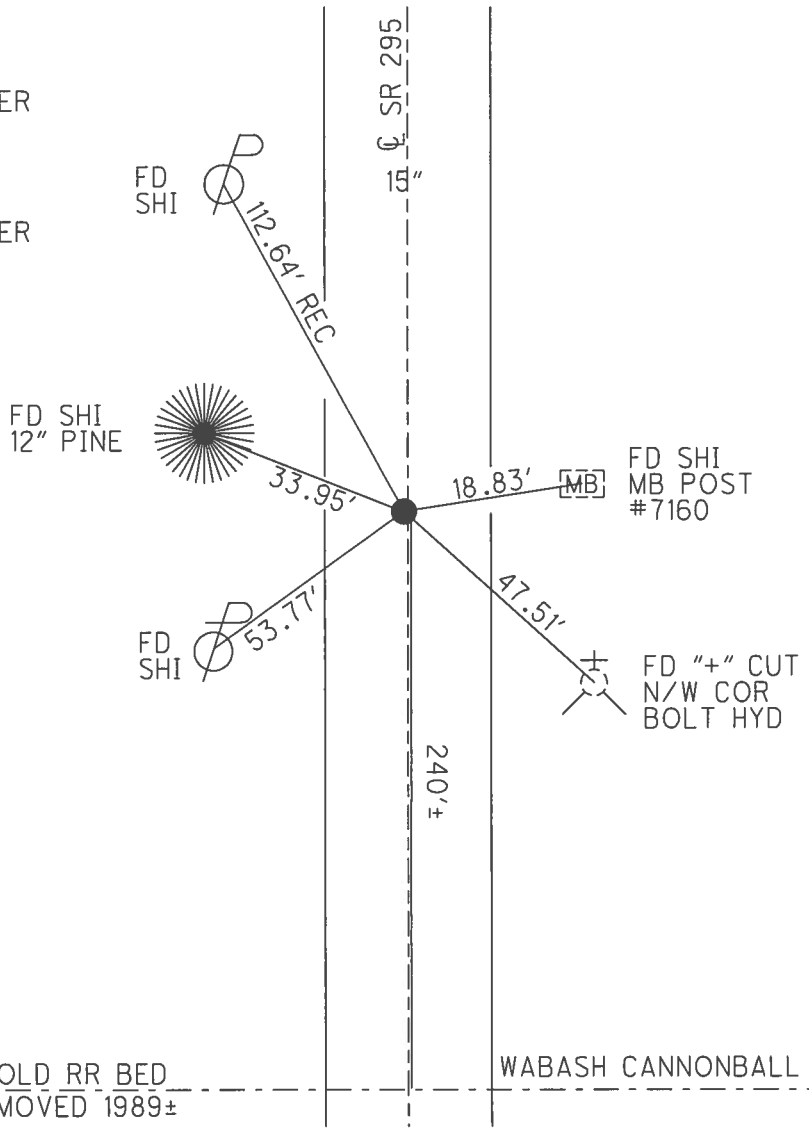
PERSONNEL _____ REFERENCE NO. 14 SHEET 15 OF 45
 NOTES HOMAN DATE 3/22/17 ROUTE SR 295
 H.C. HOMAN WEATHER SUNNY COUNTY LUCAS
 R.C. HELDMAN TEMP. 23° TOWNSHIP WATERVILLE
 _____ SECTION 3
 _____ T 6 N R 9 E

TYPE MONUMENT MAG NAIL
 ON SURFACE - ~~BELOW~~ ON _____
 LEFT - ☉ PAV'T - ~~RIGHT~~ _____ 1'
10' TO LT EDGE PAVEMENT
 S.L.M. 403+90.23



GRID: NORTHING: 674370.582 EASTING: 1605031.224

RECORD:
 FD P.K.NAIL
 9/3/02, DCH
 SET MAG/WASHER
 11/21/02, DCH
 FD MAG NAIL
 REF34
 12/4/15, JLL
 SET MAG/WASHER
 7/17/17, DCH



----- ☉ OLD RR BED REMOVED 1989± ----- WABASH CANNONBALL TRAIL -----

O.D.O.T. DISTRICT 2 SURVEY OFFICE

PERSONNEL _____

REFERENCE NO. 14

SHEET 15 OF 45

NOTES BEAUMONT

DATE 9-3-02

ROUTE S.R. 295

H.C. HOMAN

WEATHER P. CLOUDY

COUNTY LUCAS

R.C. BEAUMONT

TEMP. 80°

TOWNSHIP WATERVILLE

SECTION 3

T 6 N R 9 E

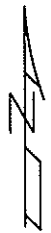
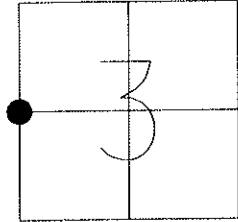
TYPE MONUMENT P.K. NAIL

ON SURFACE - ~~BELOW~~ ON

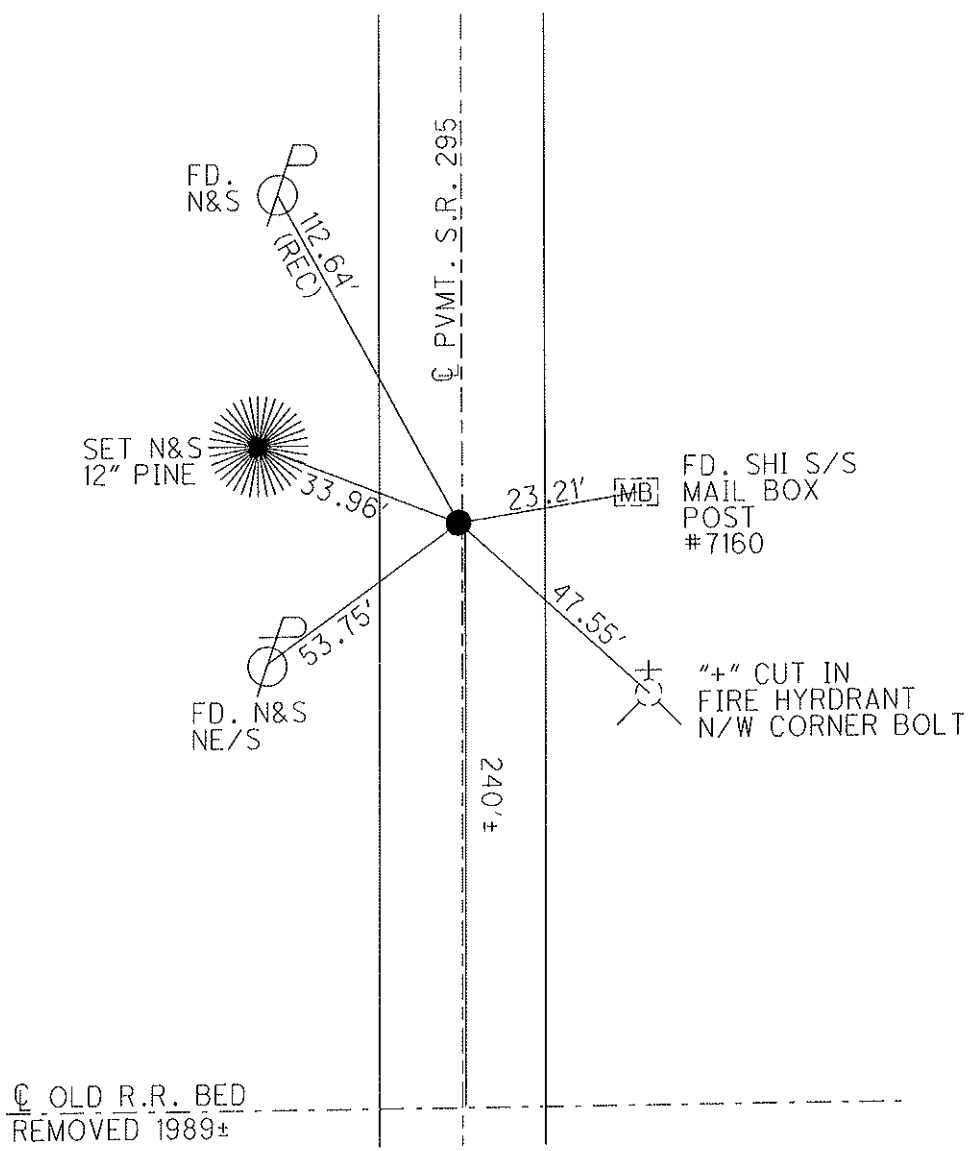
LEFT - ℄ PAV'T - ~~RIGHT~~ 1'

10' TO LT. EDGE PAVEMENT

S.L.M. 273+54



SET MAG &
WASHER
11-25-02
DCH



O.D.O.T. DISTRICT 2 SURVEY OFFICE 15

PERSONNEL

REFERENCE NO. 14

SHEET 13 OF 40

NOTES BEAUMONT

DATE 9-3-02

ROUTE S.R. 295

H.C. HOMAN

WEATHER P. CLOUDY

COUNTY LUCAS

R.C. BEAUMONT

TEMP. 80°

TOWNSHIP WATERVILLE

SECTION 3

T 6 N R 9 E

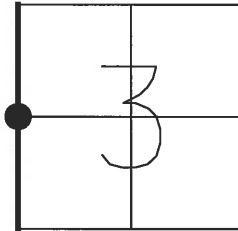
TYPE MONUMENT P.K. NAIL

ON SURFACE - BELOW ON SURFACE

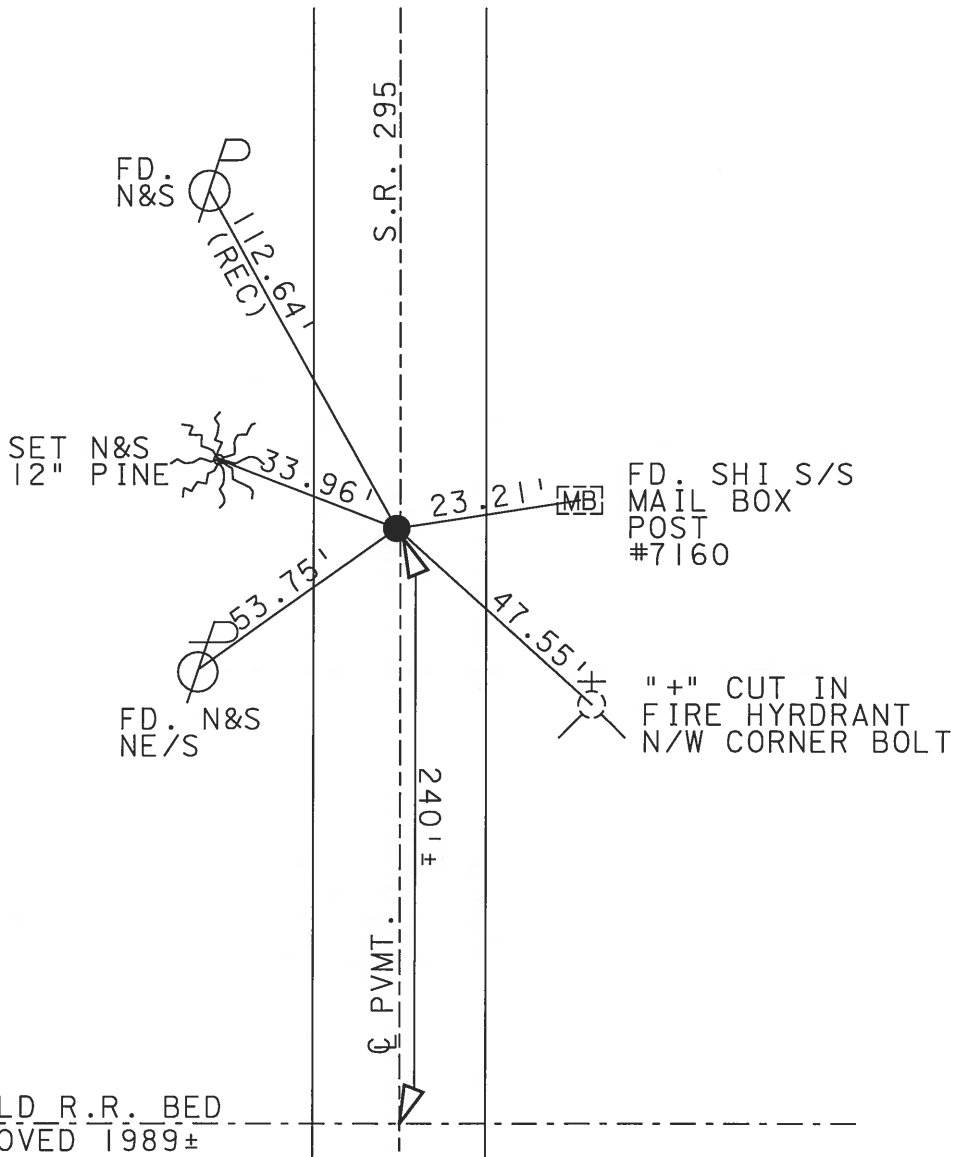
LEFT - ☉ PAV'T - RIGHT 1.0' LT

10' TO LT EDGE PAVEMENT

S.L.M. 273+54



SET MAG &
WASHER
11-25-02
DCH



☉ OLD R.R. BED
REMOVED 1989±

O.D.O.T. DISTRICT 2 SURVEY OFFICE

PERSONNEL

REFERENCE NO. 14

SHEET 12 OF 35

NOTES LOEHRKE

H.C. STONE

R.C. CURTIS

DATE 8-17-91

WEATHER CLEAR

TEMP. +80

ROUTE S.R. 295

COUNTY LUCAS

TOWNSHIP WATERVILLE

SECTION 3

Set. P.K./WASHER
3-24-92

T 6 N R 9 E

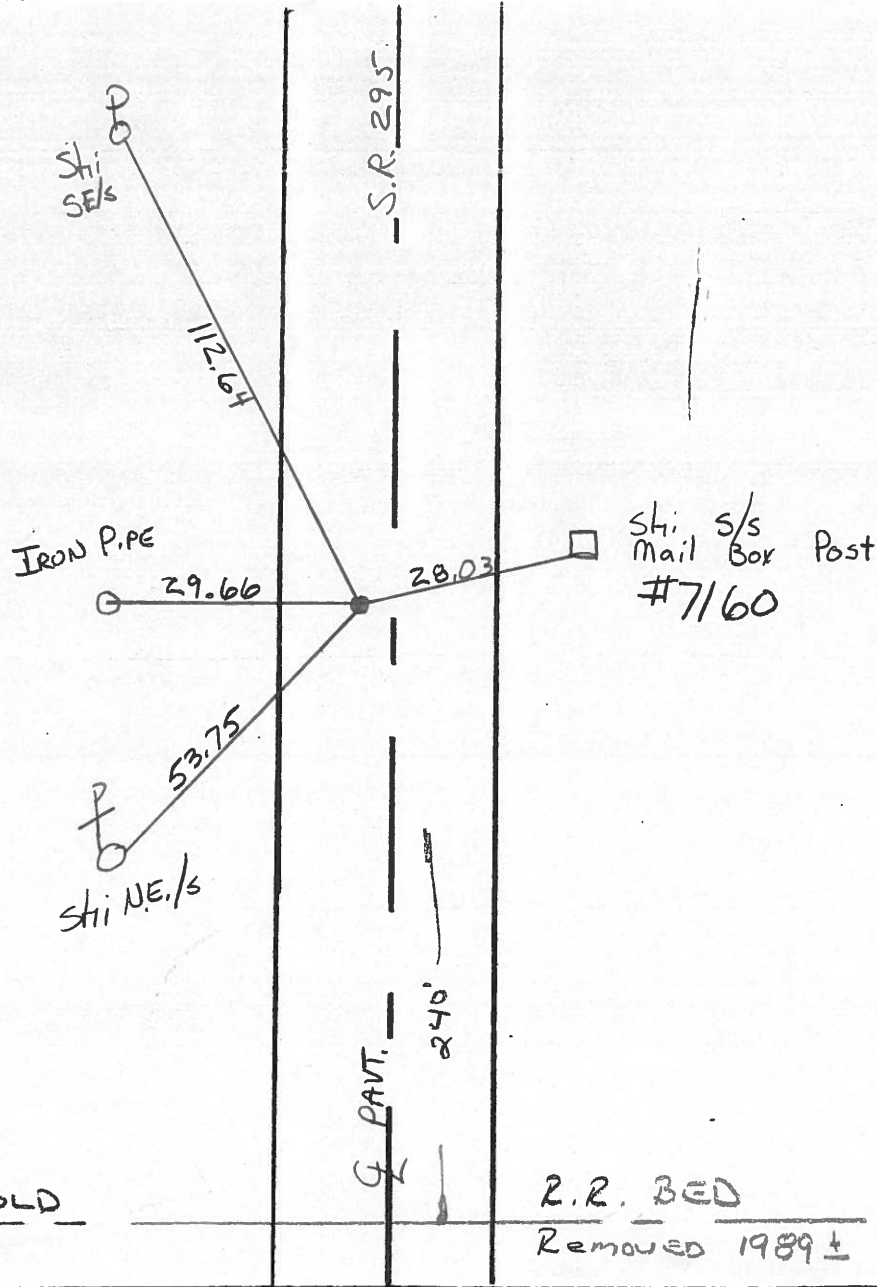
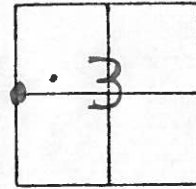
TYPE MONUMENT P.K. Nail

ON SURFACE - BELOW YES

LEFT- & PAVT. - RIGHT 1.7'

1.7 TO Lt. EDGE PAVEMENT

S.L.M. 273 + 54



County Lucas S.R. 295

Date 23 April 82

Township Waterville

Weather Sunny

Section 3-4

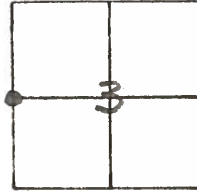
Temp. 57°

T N, R E

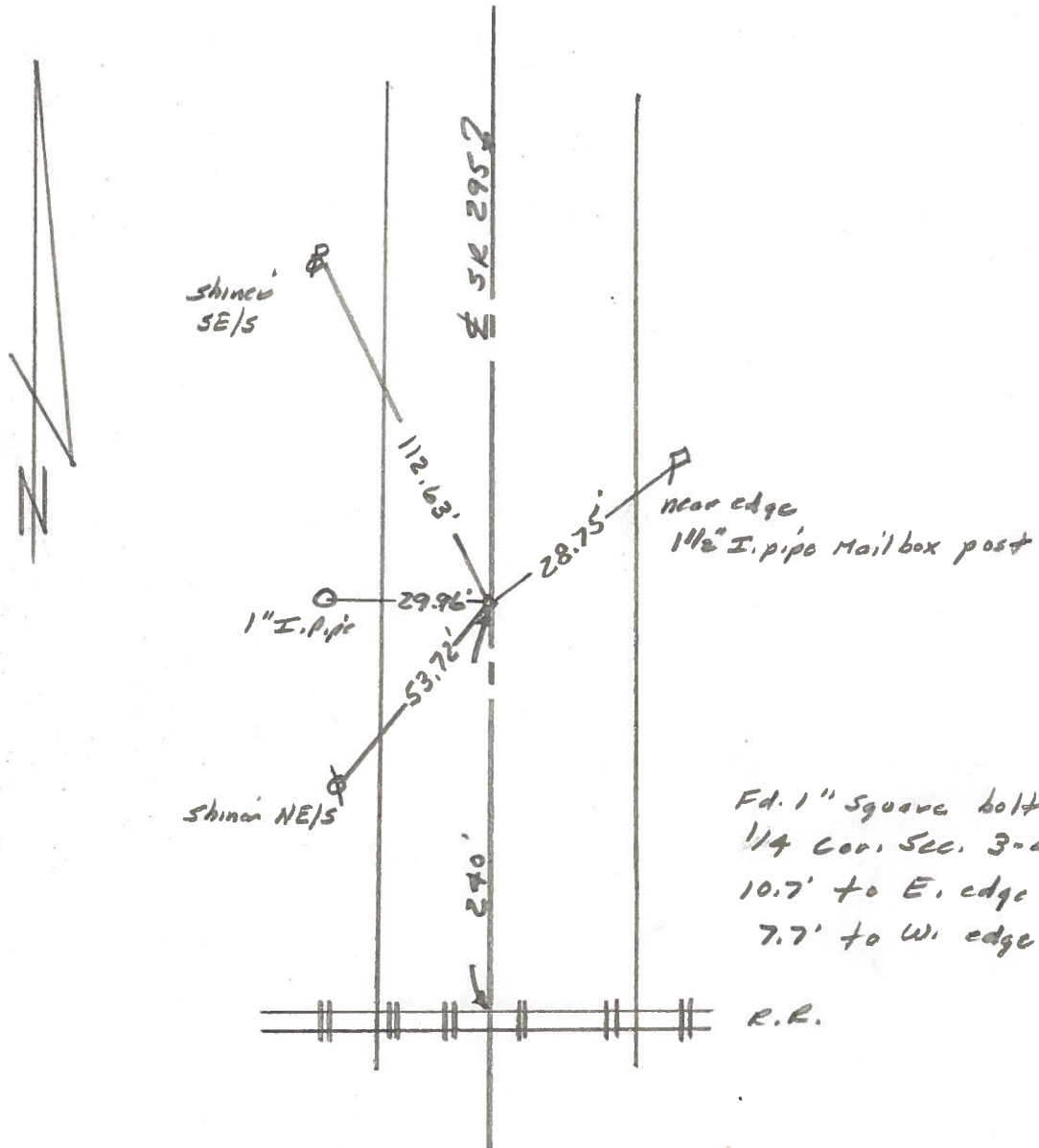
Personnel I. Stone

R. Michalak

D. Curtis



REF. No. 14



Fd. 1" Square bolt To Surface
1/4 Cor. Sec. 3-4
10.7' to E. edge put.
7.7' to W. edge put.
R.R.

PERSONNEL	TITLE	PERSONNEL	TITLE	COUNTY	DATE	WEATHER	TEMP.
Stone	Notes			Lucas	7 June 68	Hot	85°
Beck	Tapc			S. R. # 295			
Michalak	Tapc			SEC.			

DESCRIPTION References to Control Points JOB NO. _____

