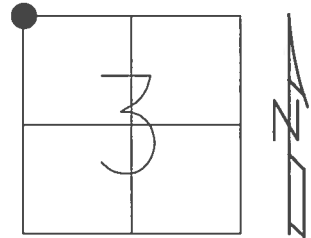


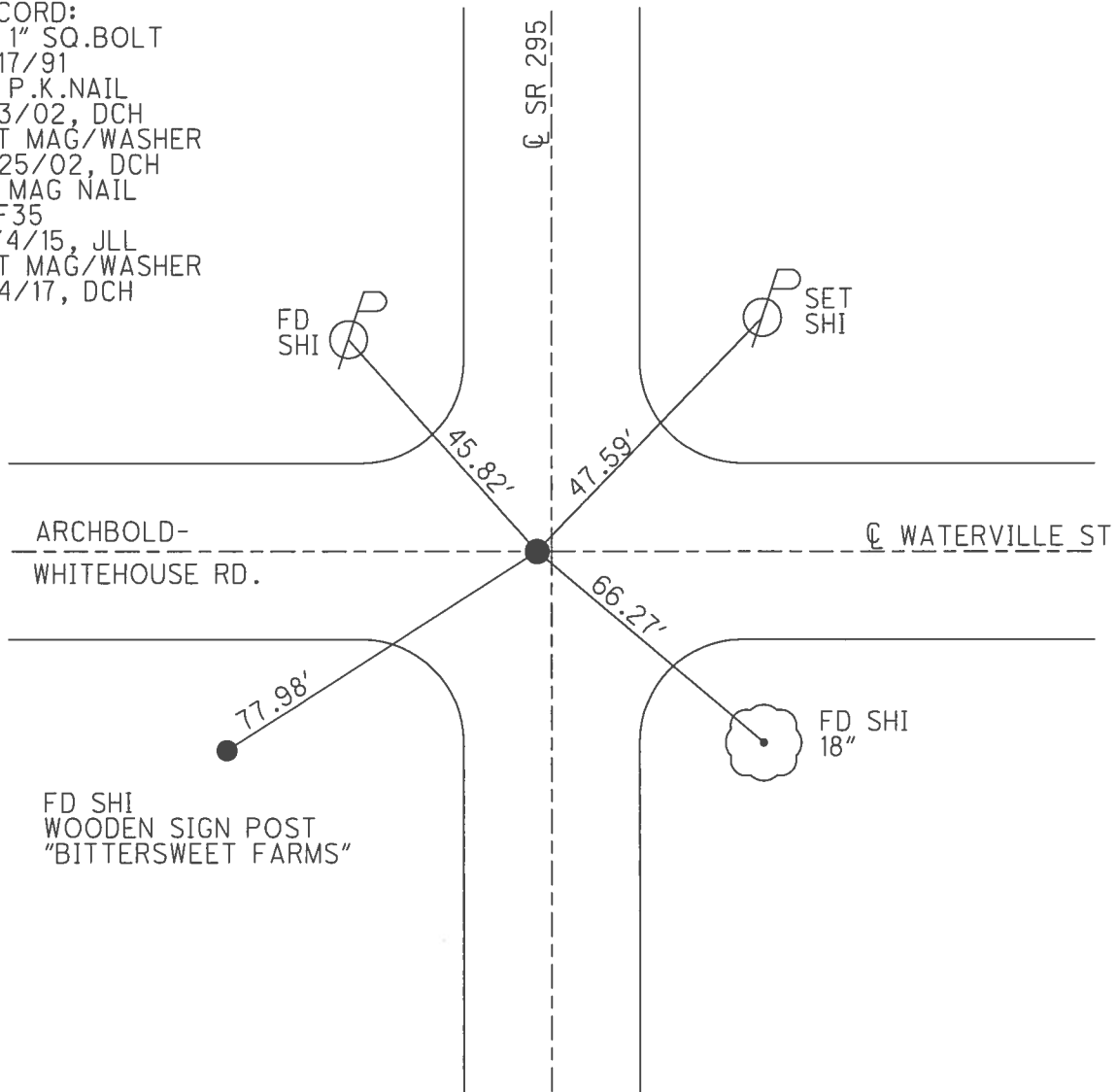
O.D.O.T. DISTRICT 2 SURVEY OFFICE (USE ONLY)

PERSONNEL	REFERENCE NO.	15	SHEET	16	OF	45
NOTES	HOMAN	DATE	3/22/17	ROUTE	SR 295	
H.C.	HOMAN	WEATHER	SUNNY	COUNTY	LUCAS	
R.C.	HELDMAN	TEMP.	23°	TOWNSHIP	WATERVILLE	
				SECTION	3	
				T	6	N
				R	9	E

TYPE MONUMENT MAG NAIL
 ON SURFACE - ~~BELOW~~ ON
 LEFT - Q PAV'T - ~~RIGHT~~ 2'
- TO - EDGE PAVEMENT
 S.L.M. 426+81.91
 GRID: NORTHING: 676662.204 EASTING: 1605015.237



RECORD:
 FD 1" SQ.BOLT
 8/17/91
 FD P.K.NAIL
 9/3/02, DCH
 SET MAG/WASHER
 11/25/02, DCH
 FD MAG NAIL
 REF35
 12/4/15, JLL
 SET MAG/WASHER
 8/4/17, DCH



O.D.O.T. DISTRICT 2 SURVEY OFFICE

PERSONNEL

REFERENCE NO. 15

SHEET 16 OF 45

NOTES BEAUMONT

DATE 9-3-02

ROUTE S.R. 295

H.C. HOMAN

WEATHER P. CLOUDY

COUNTY LUCAS

R.C. BEAUMONT

TEMP. 80°

TOWNSHIP WATERVILLE

SECTION 3

T 6 N R 9 E

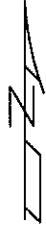
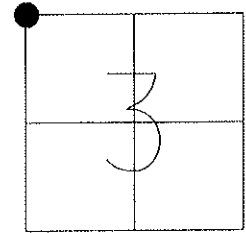
TYPE MONUMENT P.K. NAIL

ON SURFACE - ~~BELOW~~ ON

LEFT - Q PAV'T - ~~RIGHT~~ 2'

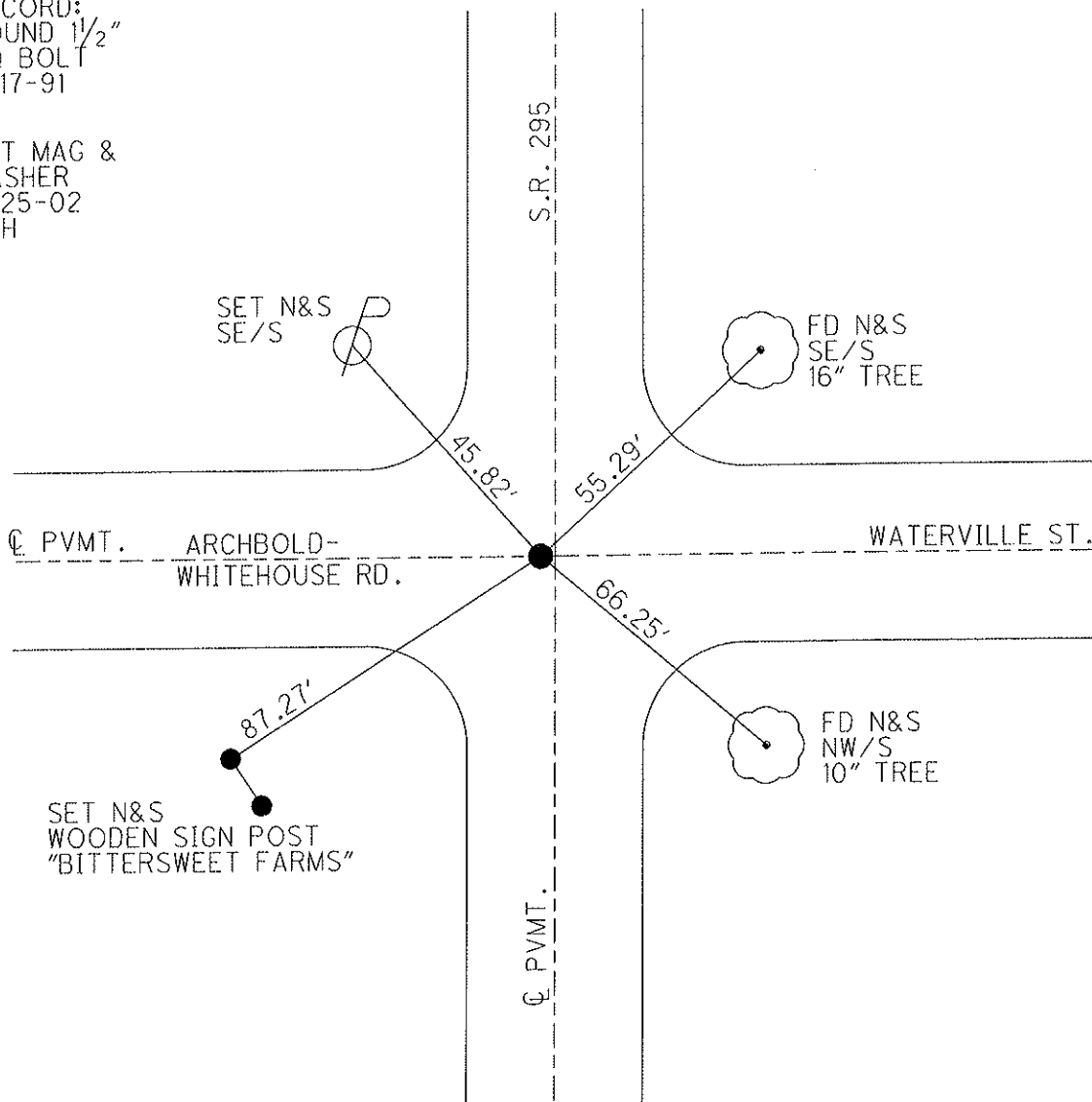
TO EDGE PAVEMENT

S.L.M. 296+46



RECORD:
FOUND 1 1/2"
SQ BOLT
8-17-91

SET MAG &
WASHER
11-25-02
DCH



O.D.O.T. DISTRICT 2 SURVEY OFFICE

PERSONNEL

REFERENCE NO. 15

SHEET 13 OF 35

NOTES LOEHRKE

H.C. STONE

DATE 8-17-91

ROUTE S.R. 295

R.C. CURTIS

WEATHER CLEAR

COUNTY LUCAS

TEMP. +80'

TOWNSHIP WATERVILLE

SECTION 3

T6 NR 9 E

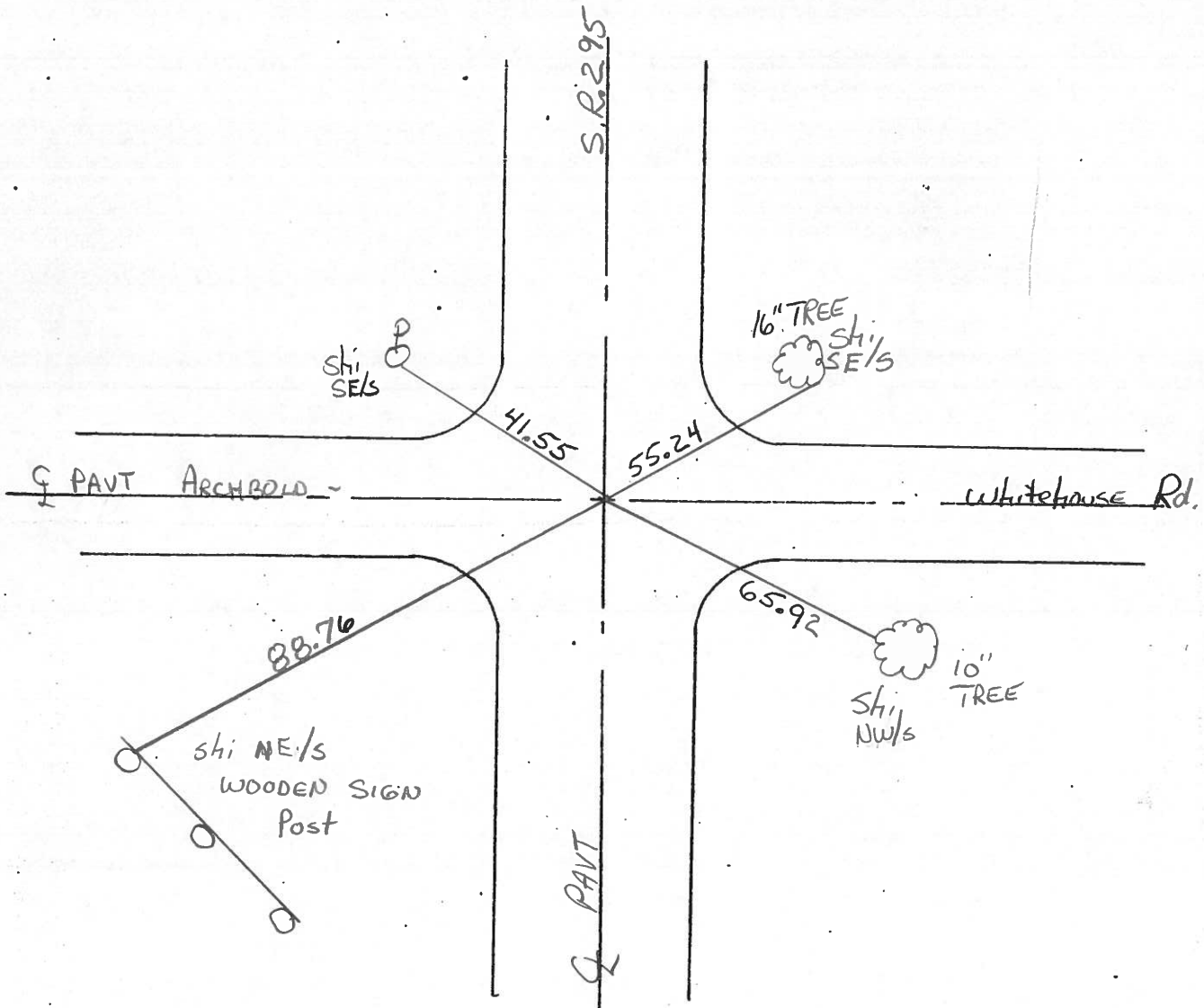
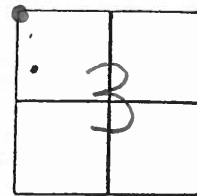
TYPE MONUMENT 1 1/2" Sq. Bolt

ON SURFACE - BELOW YES

LEFT- & PAV'T. - RIGHT 3.3'

TO _____ EDGE PAVEMENT

S.L.M. 296 +46



O.D.O.T. DISTRICT 2 SURVEY OFFICE

SHEET OF

County Lucas S.R. 295

Date 23 April 82

Township Waterville

Weather Sunny

Section 3-4

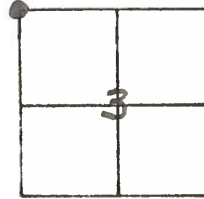
Temp. 57°

T N, R E

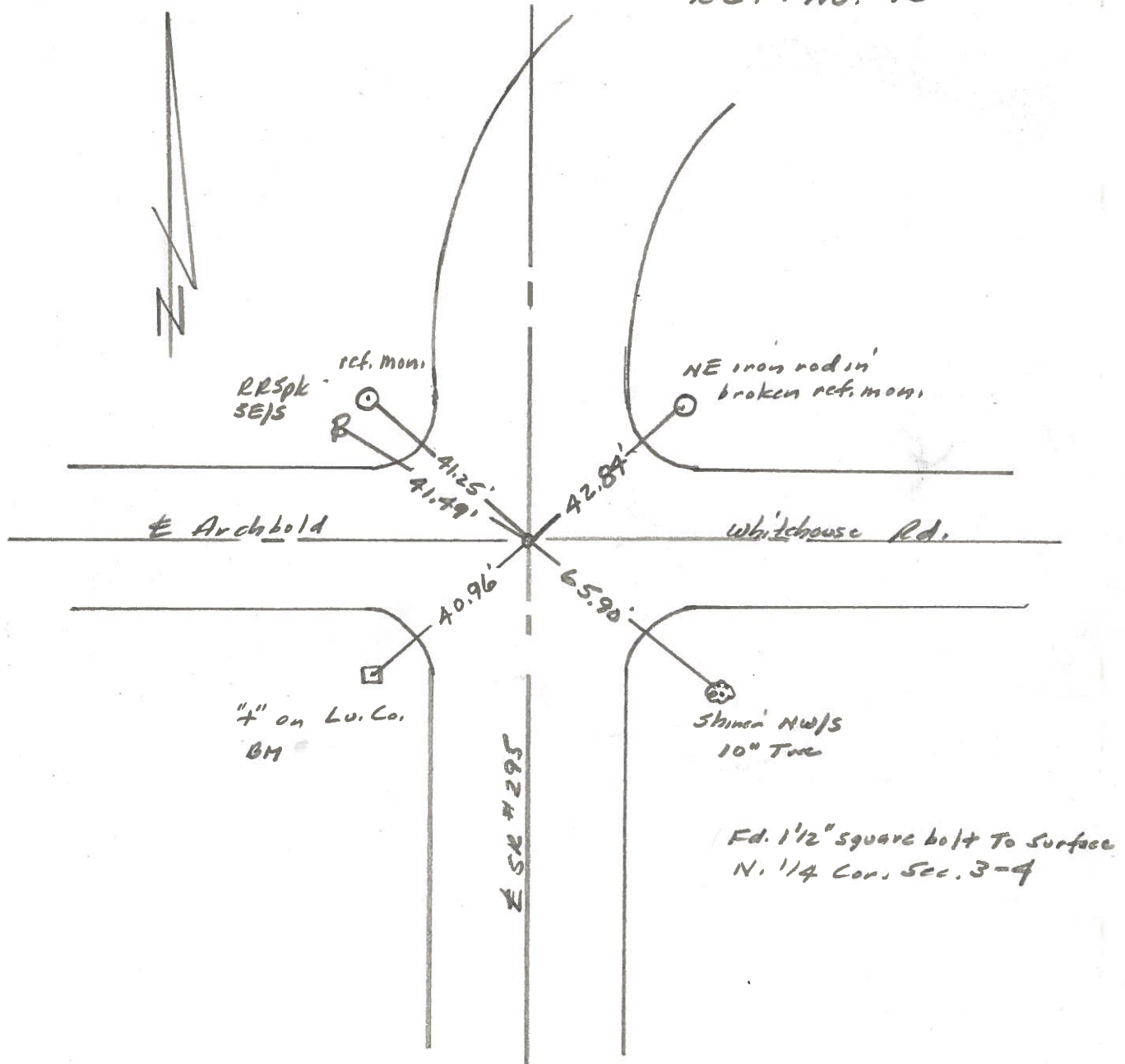
Personnel 1. Stone

R. Michalak

D. Curtis



REF. NO. 15



PERSONNEL	TITLE	PERSONNEL	TITLE
Stone			
Curtis			
Neuser			
Granata			

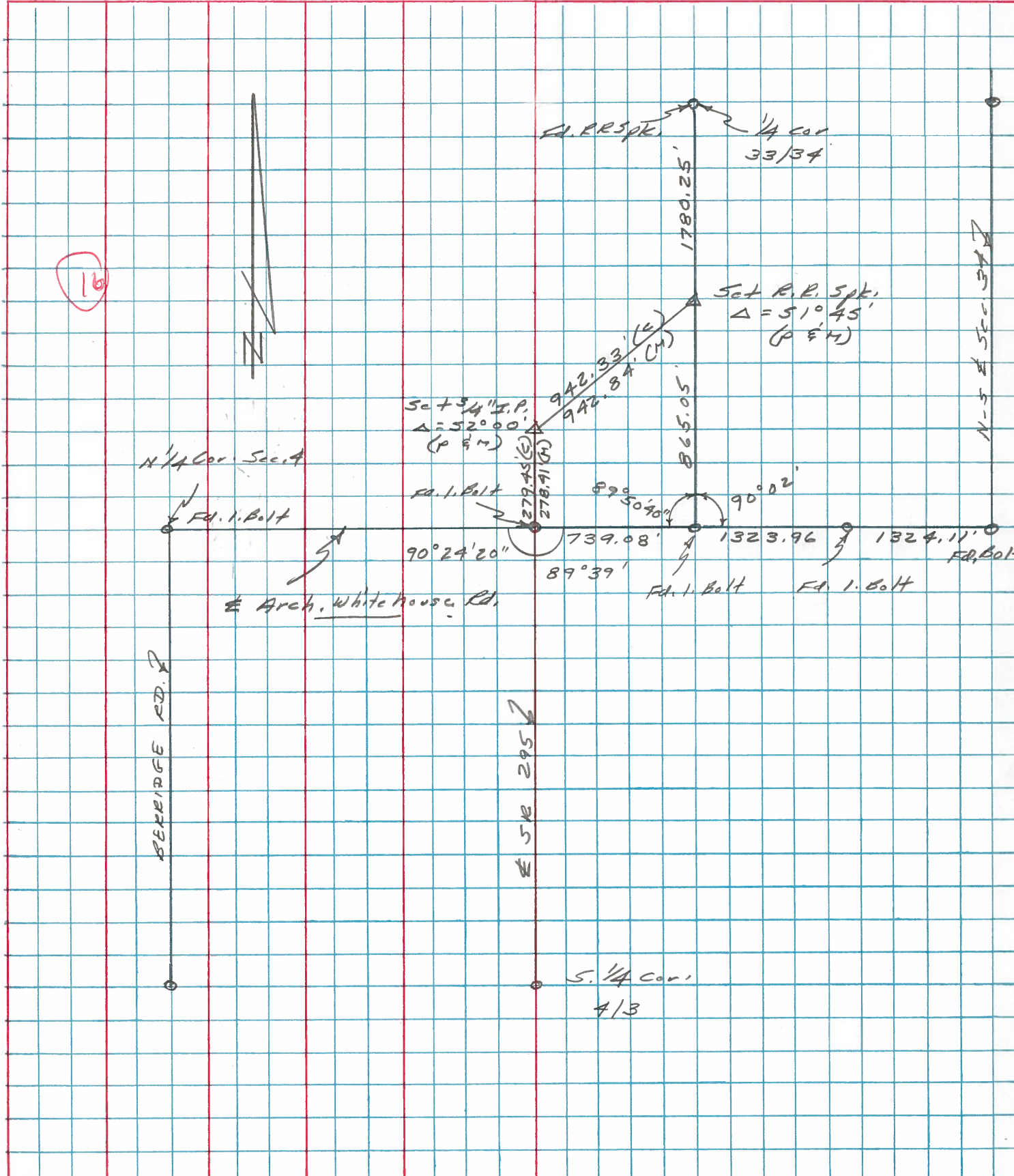
COUNTY Lucas DATE 14 April 76

S. R. 295 WEATHER Warm

SEC. 5.80 ± TEMP. 72°

DESCRIPTION Alignment JOB NO. _____

LEFT CENTER LINE RIGHT



PERSONNEL	TITLE	PERSONNEL	TITLE	COUNTY	DATE
Stenc	Notes			Lucas	7 June 68
Beck	Tape			S. R. #295	WEATHER Hot
Michalak	Tape			SEC.	TEMP. 89°

DESCRIPTION References to Control Points JOB NO. _____

